

## Apply Today! Produce Results

**CARE's** two types of Cooperative Agreements (a kind of grant):

- **Level I (about \$90,000)** - With a Level I Agreement, communities organize and create a collaborative partnership dedicated to reducing toxics in their local environment. These partnerships work on steps 1 and 2 in the CARE process. Where possible, they also begin step 3.
- **Level II (about \$275,000)** - With a Level II Agreement, the community already has established a broad based collaborative partnership and focuses on steps 3 and 4 of the CARE process.

### *For more information:*

Call toll free at 1-877-CARE 909  
or visit our Web site at  
[www.epa.gov/CARE](http://www.epa.gov/CARE).

### *Write to us at:*

CARE Program  
Mailcode 8001A  
US EPA  
1200 Pennsylvania Ave, NW  
Washington DC, 20460

United States Environmental Protection Agency  
CARE Program (8001A)  
EPA-400-F-08-001  
September 2008  
[www.epa.gov/CARE](http://www.epa.gov/CARE)



EPA CARE Program (8001A)  
Washington, DC 20460  
Official Business Only  
Penalty for Private Use \$300

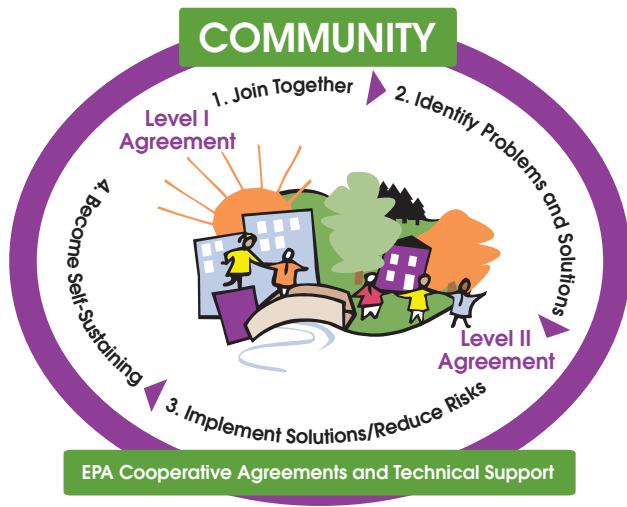


**CARE**  
LOCAL PARTNERSHIPS. HEALTHY COMMUNITIES.

## Do You Need Help Reducing Harmful Pollution in Your Community?



FIRST CLASS MAIL  
POSTAGE & FEES PAID  
EPA PERMIT NO. G-35



The **Community Action for a Renewed Environment (CARE)** program, sponsored by the U.S. Environmental Protection Agency (EPA), is a competitive grant program that offers an innovative way for communities to take action to reduce toxic pollution. Through **CARE**, communities create local partnerships that implement local solutions to reduce releases of and minimize exposure to toxic pollutants.

As of fall 2008, over 60 communities across the United States are part of the **CARE** network (see project descriptions at [www.epa.gov/CARE](http://www.epa.gov/CARE)). Many more are expected to join in future years.

**CARE** educates and supports communities as they assess the pollution risks they face. **CARE** also provides access to EPA's and others' partnership programs that reduce exposure to toxics and create safer communities. Among EPA's partnership programs are those that: reduce emissions from diesel engines, reduce waste from toxic chemical use, reduce emissions from small business operations, improve the indoor environment in schools, and protect drinking water supplies through pollution prevention. EPA also offers support for communities to develop their own approaches to reducing toxics.

# The CARE Process

## 1. Join Together

A broad-based partnership is formed. Partners could be non-profit groups, community organizations, businesses, schools and state, Tribal and local government agencies, EPA and other Federal Agencies.

## 2. Identify Problems and Solutions

Working together, this stakeholder group assesses toxics problems in their community and considers options for reducing risks. Many of the emission and exposure reductions will result from the application of EPA partnership programs.

## 3. Implement Solutions/Reduce Risks

The partnership identifies the combination of programs that best meet the community's needs. EPA funding helps to implement these projects. The community begins improving its environment.

## 4. Become Self Sustaining

The community develops new ways to attract funding and partners into their broad-based collaborative to build on its success. New problem assessments are completed and new solutions identified. The result: the partnership becomes self-sustaining and continues working to improve their environment where community members live, work and play.

### CARE will help your community:

- Create local partnerships to reduce exposure to toxic pollutants through voluntary, local action based upon community consensus.
- Build community capacity and decision-making skills to respond to pollution problems.
- Focus on indoor and outdoor sources of toxics.