



EPA Region 6 GISST: Brownsville Airport Extension Example

Osowski, S. L. and J. E. Danielson**



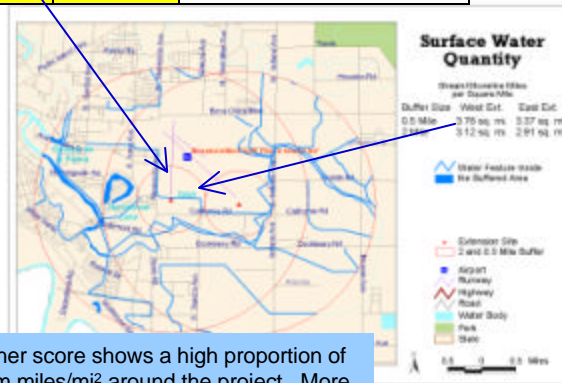
US EPA Region 6 Compliance Assurance and Enforcement Division, Office of Planning & Coordination 214-665-7506, **ACS, Dallas, TX

STEP 1

- Get Federal Agency
- Get Scope (line, point, polygon)
- Get Location (lat/long)

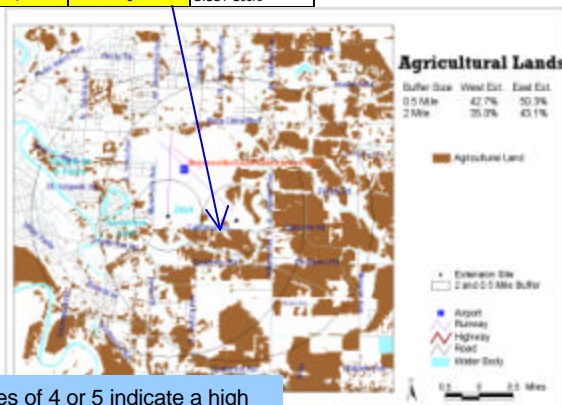
CAMERON	CAMERON	County Name
Brownsville Airport West Extension	Brownsville Airport SE Extension	Site Name
-37	-37	Longitude - Degrees
25	25	Longitude - Minutes
46	46	Longitude - Seconds
25	25	Latitude - Degrees
53	53	Latitude - Minutes
48	52	Latitude - Seconds
HUC/County Level Criteria		
0.0	0.0	Surface Water Use (% of streams meeting designated use)
3	3	GISST Score
0	0	Water Quality (STORET Exceedances per square mile)
2	2	GISST Score
28.3	28.3	Annual Average Rainfall (inches per year)
3	3	GISST Score
5	5	Unified Watershed Assessment (State Priorities)
0.0	0.0	Average surface water flow (cubic feet per second)
5	5	GISST Score
4	4	GISST Score for average aquifer geology
4	3	GISST Score for the Distance to surface water
1	1	GISST Score for Ground nonattainment
1	1	GISST Score for Sole Source Aquifer
2 Mile Vulnerability Criteria		
3.12	2.01	Surface water quantity (stream/shoreline miles per sq mile)
5	5	GISST Score
1.1	0.5	% area that is surface water
2.4	2.2	GISST Score
2.4	2.2	GISST Score for Average Soil Permeability
1.5	1.4	GISST Score for Average Ground water probability
39.6	43.5	% wildlife habitat
4	4	GISST score
3.6	3.7	Average Land Use/Land Cover
4	4	GISST Score
35.0	43.1	% Agricultural Land
3	4	GISST Score
0.3	0.3	% Wetland
1	2	GISST Score
19.6	22.5	% within 100 year flood plain
1	2	GISST Score
20.5	23.8	% within 500 year flood plain
2	2	GISST Score
7.1	4.5	Road density (road miles per sq mile)
5	5	GISST Score
0	0	Number of other sites around the facility
1	1	GISST Score
2 Mile Socio-Economic Criteria		
64.8%	64.7%	% Population w/o a High School Diploma
5	5	GISST Score
3.8	3.8	GISST Score for Educational Achievement
49.7%	47.6%	% households that are economically stressed
4	4	GISST Score
95.4%	94.0%	% population that is considered a minority
5	5	GISST Score
14.1%	13.1%	% population that is under 7 years of age
2	2	GISST Score
9.8%	10.3%	% population that is over 55 years of age
1	1	GISST Score
2.0%	1.5%	% population that is under 1 year of age (natality)
3	3	GISST Score

2 Mile Vulnerability Criteria		
West Ext	Southwest Ext	Surface water quantity (stream/shoreline miles per sq mile)
5	5	GISST Score
Half Mile Vulnerability Criteria		
5	5	GISST Score



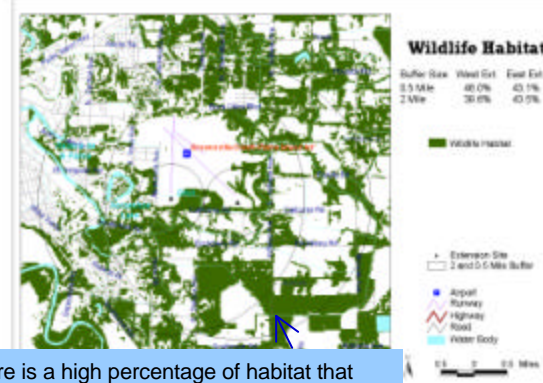
A higher score shows a high proportion of stream miles/mi² around the project. More shoreline provides more habitat areas for fish, photosynthesis, etc. and a high potential for impact.

2 Mile Vulnerability Criteria		
35.0	43.1	% Agricultural Land
3	4	GISST Score
Half Mile Vulnerability Criteria		
42.7	50.3	% Agricultural Land
4	5	GISST Score



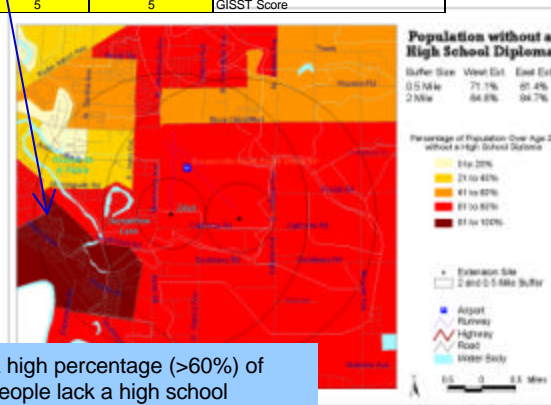
Scores of 4 or 5 indicate a high percentage of agricultural lands. This can aid in determining "prime farmland" for NEPA purposes.

2 Mile Vulnerability Criteria		
39.6	43.5	% wildlife habitat
3	4	GISST score
Half Mile Vulnerability Criteria		
46.0	43.1	% wildlife habitat
4	4	GISST score



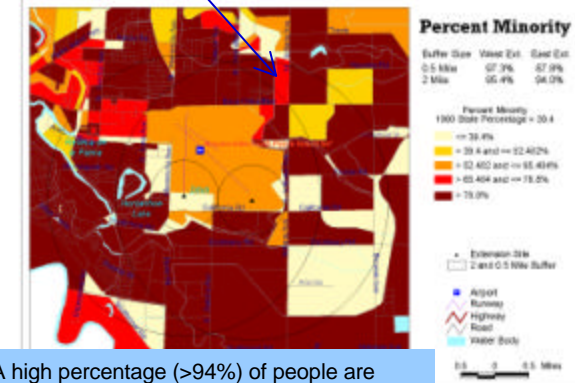
There is a high percentage of habitat that could potentially be used by wildlife and may be impacted by the proposed project. These areas may also present mitigation opportunities.

2 Mile Socio-Economic Criteria		
64.8%	64.7%	% Population w/o a High School Diploma
5	5	GISST Score
Half Mile Socio-Economic Criteria		
71.1%	61.4%	% Population w/o a High School Diploma
5	5	GISST Score



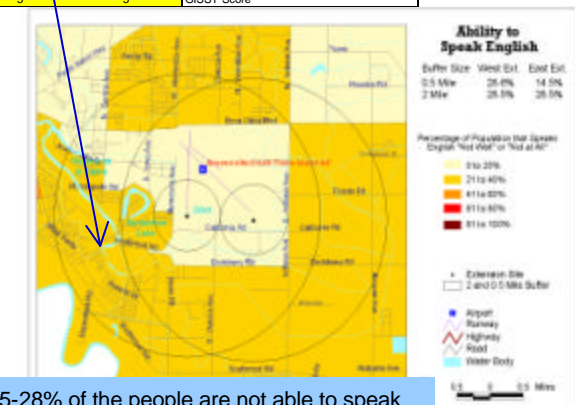
A high percentage (>60%) of people lack a high school education. These individuals may be subject to increased environmental, economic and health risks.

2 Mile Socio-Economic Criteria		
95.4%	94.0%	% population that is considered a minority
5	5	GISST Score
Half Mile Socio-Economic Criteria		
97.3%	87.8%	% population that is considered a minority
5	5	GISST Score



A high percentage (>94%) of people are considered minority in the areas near the project. This may factor into communication strategies and EJ assessments.

2 Mile Socio-Economic Criteria		
28.5%	28.5%	% population that does not speak English well
5	5	GISST Score
Half Mile Socio-Economic Criteria		
28.6%	14.5%	% population that does not speak English well
5	5	GISST Score



>15-28% of the people are not able to speak English well. This puts these individuals at a disadvantage in the public participation process and may increase their environmental, economic or health risks

STEP 2

GISST generates an XL table "High" scores of 4 or 5 are highlighted.

STEP 3

Print maps & Interpret scores
0.5 mi buffer=direct effects, 2 mi buffer=indirect effects