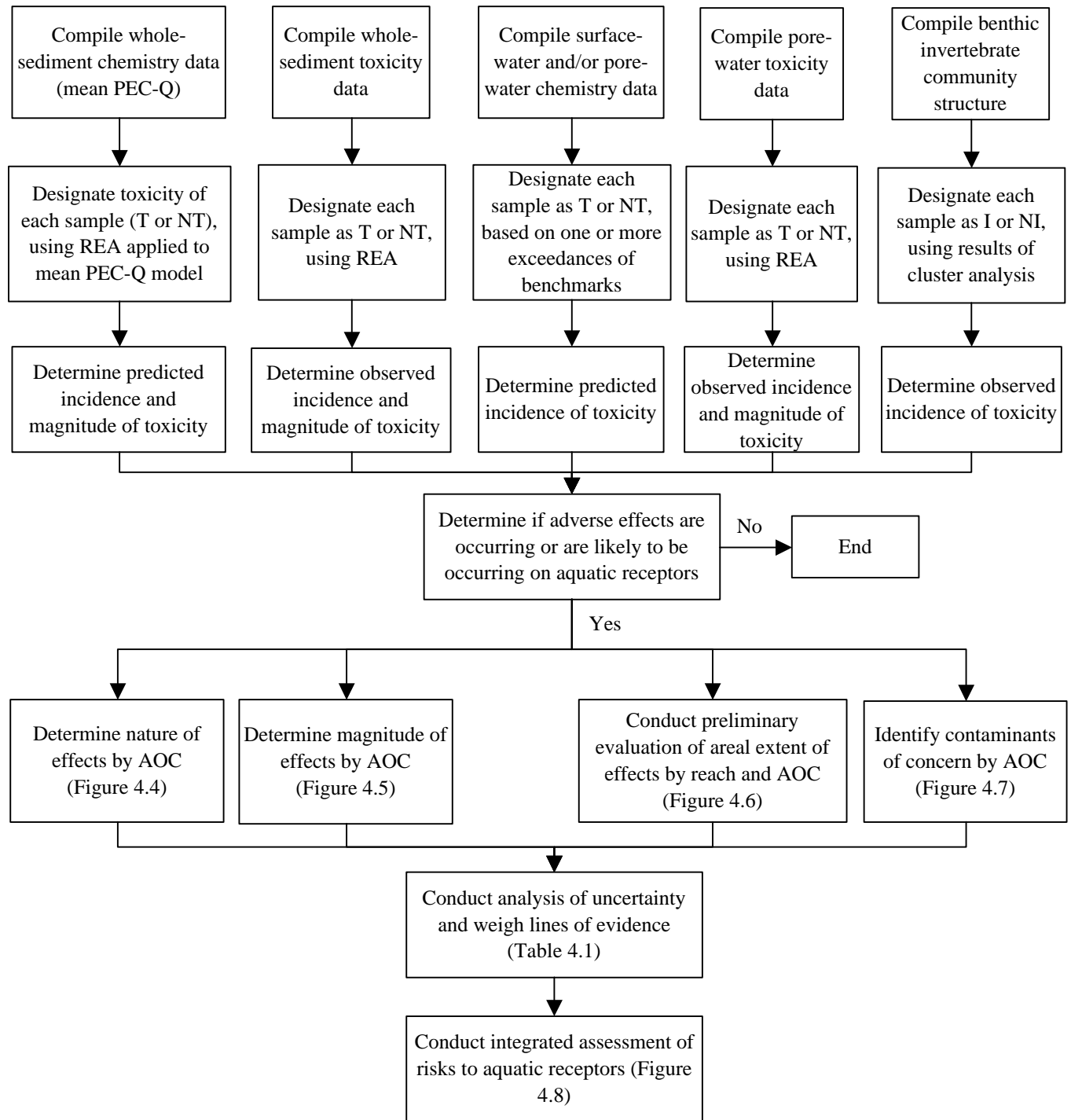


Figure 4-3. Overview of the approach that was used to characterize risks to aquatic receptors associated with exposure to chemicals of potential concern in the Calcasieu Estuary.



AOC = area of concern; PEC-Q = probable effect concentration-quotient; T = toxic; NT = not toxic; REA = reference envelope approach; I = impacted; NI = not impacted.