



Discussion Overview

I. What is Wind Development?

II. What is Community Wind?

III. Who is OwnEnergy?

Wind Development

Wind Development

Site Selection

Early/Mid Stage
Development

Late Stage
Development

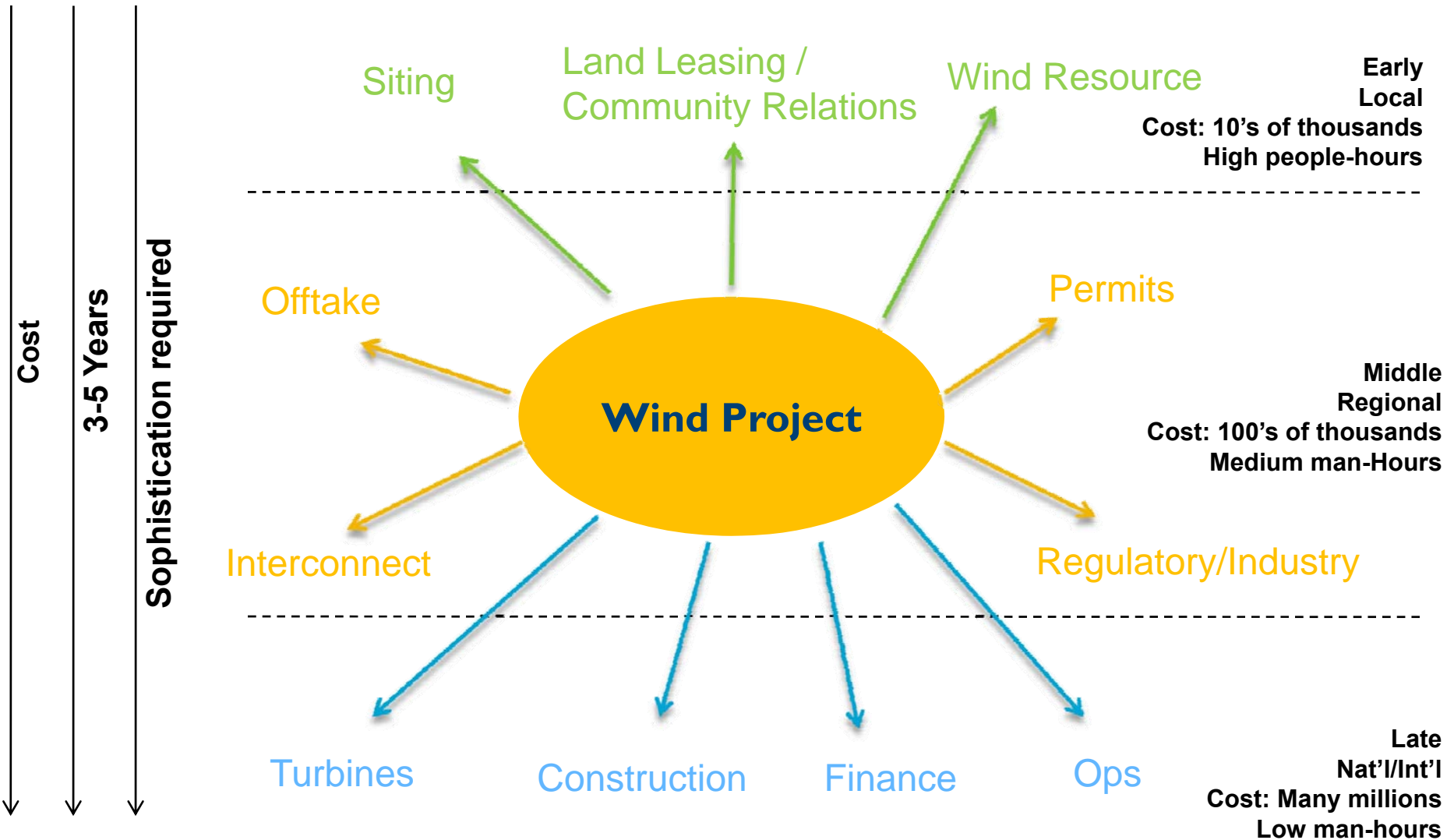
Financing

Construction

Operations &
Maintenance



Development Timeline and Cost



Options & Risk

	Option/Lease	Joint Dev	Independent Dev
Financial Upside	Low	Moderate	High
Control	Low	Moderate	High
Effort	Low	Moderate	High
Capital Risk	Low	Moderate	High
Development Risk	Moderate	High	High

Land Use and Impact



Hull 1, Courtesy NREL

- ▶ 1 - 2 acres impacted per turbine
- ▶ Appropriate setbacks from homes & roads (1,200 ft.)
- ▶ Minimal impact on operations

How Big are These Things?

Turbine size relative to an office building

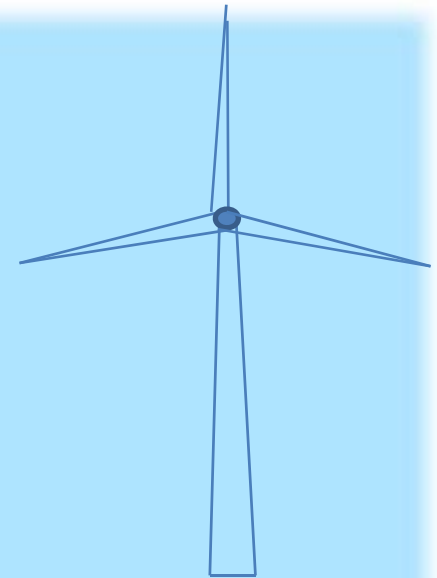
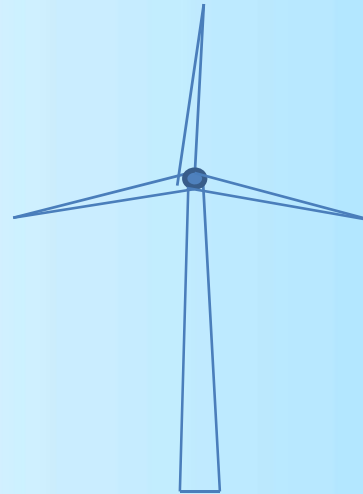
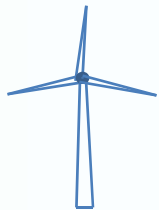
225 kw

Epic Center

Tallest Building in Kansas

1.5 MW

2.3 MW



27 m

89 ft

80 m

252 ft

118 m

388 ft

130 m

428 ft

Site Suitability

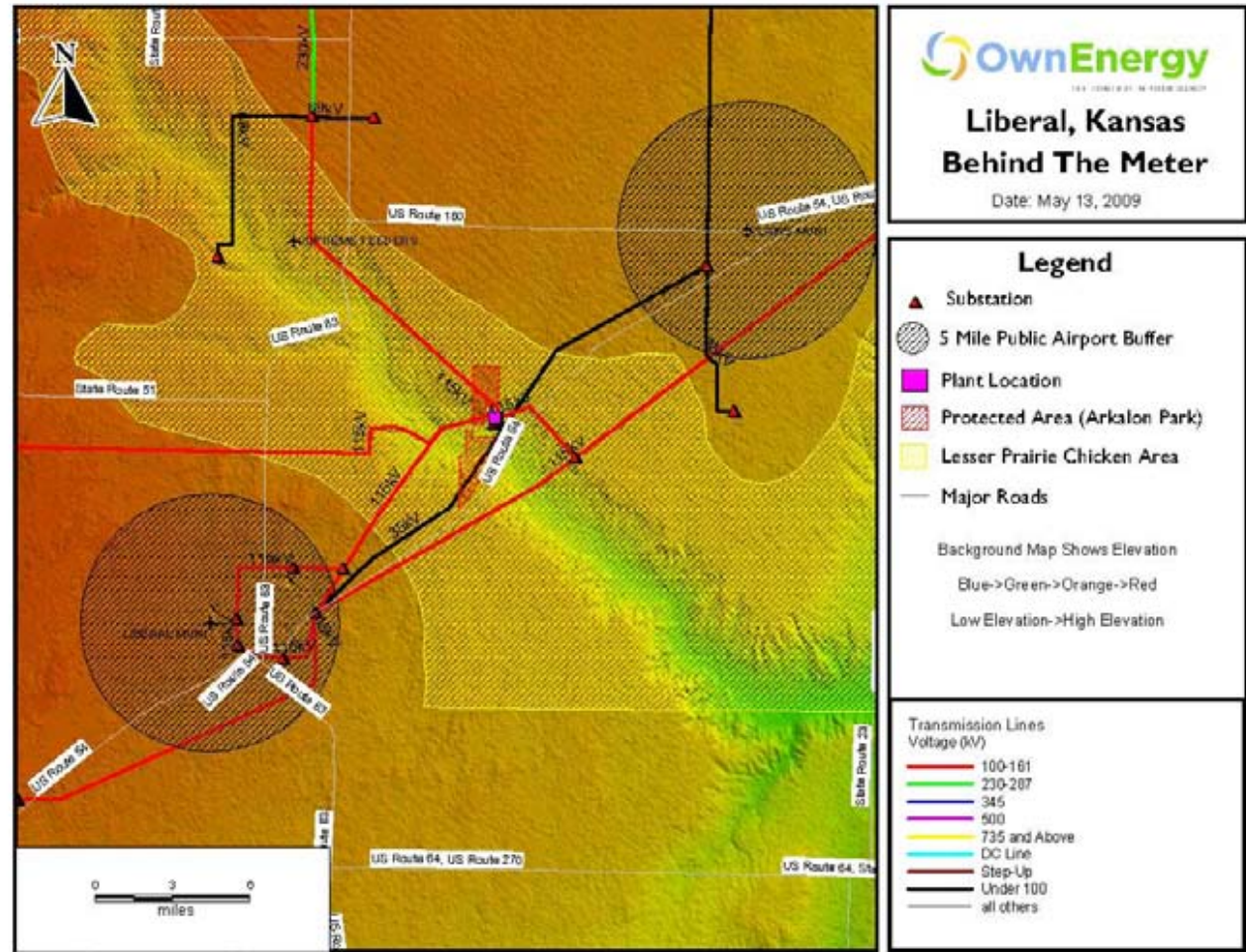
Issues:

Topographic features

Interconnection

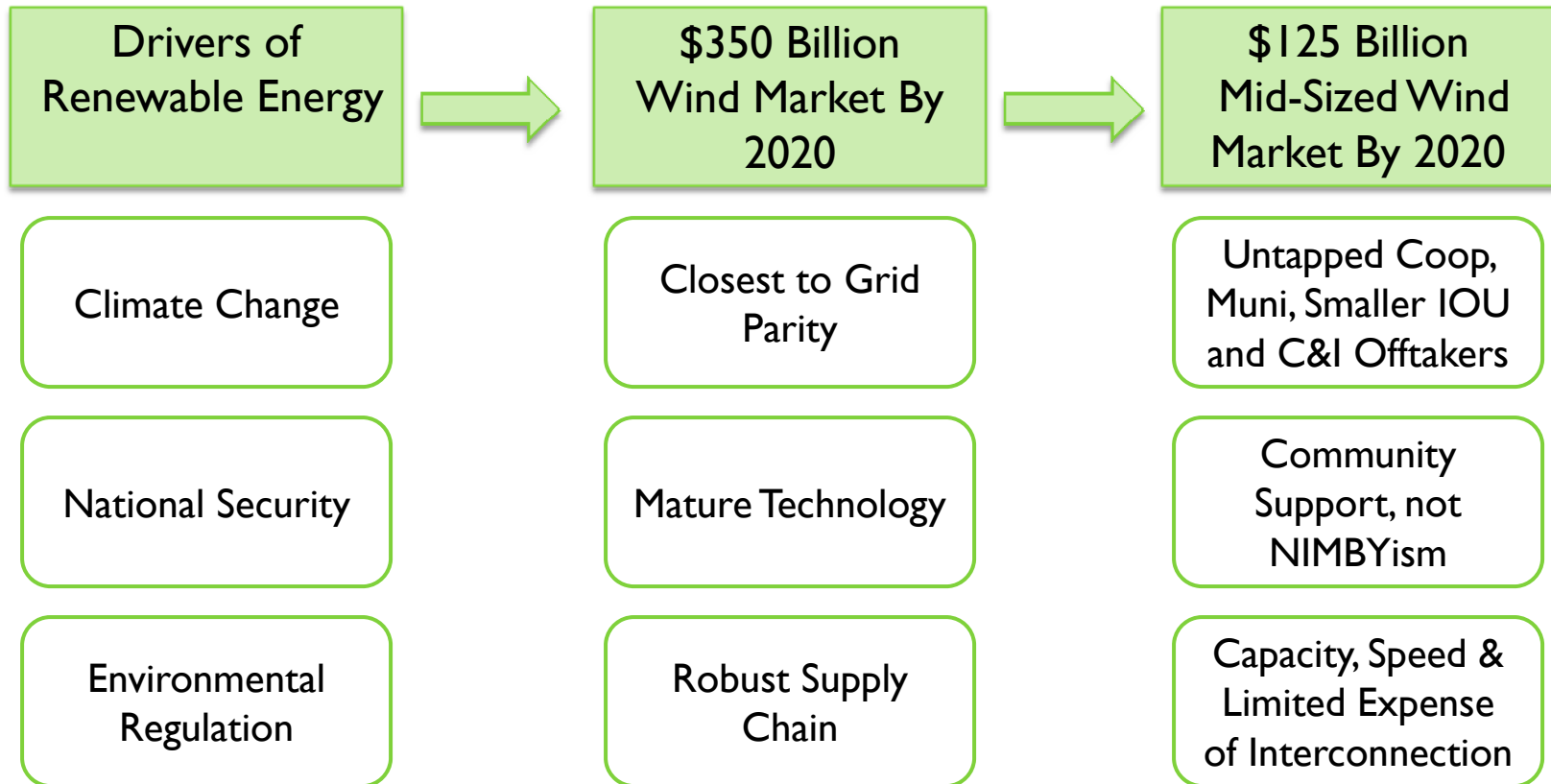
Setbacks

Environmental

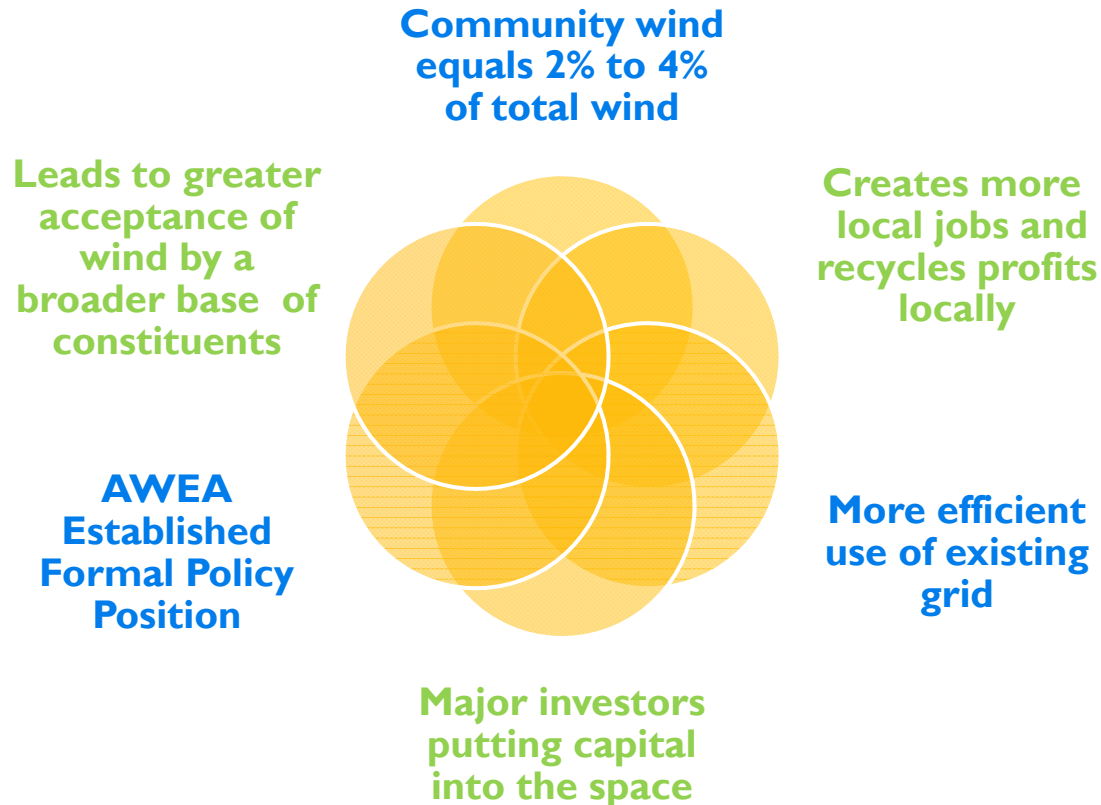


Community Wind

Drivers of Mid-Sized Market Growth



Community Wind Taking Off in the U.S.A.



Community Wind Characteristics

Greater economic benefits for community than land lease payments

Community members have direct financial stake

Community has significant decision-making rights

Project sizes typically sub-100MW

Genuine sense of community involvement



CW for Corporates, Institutions and Governments

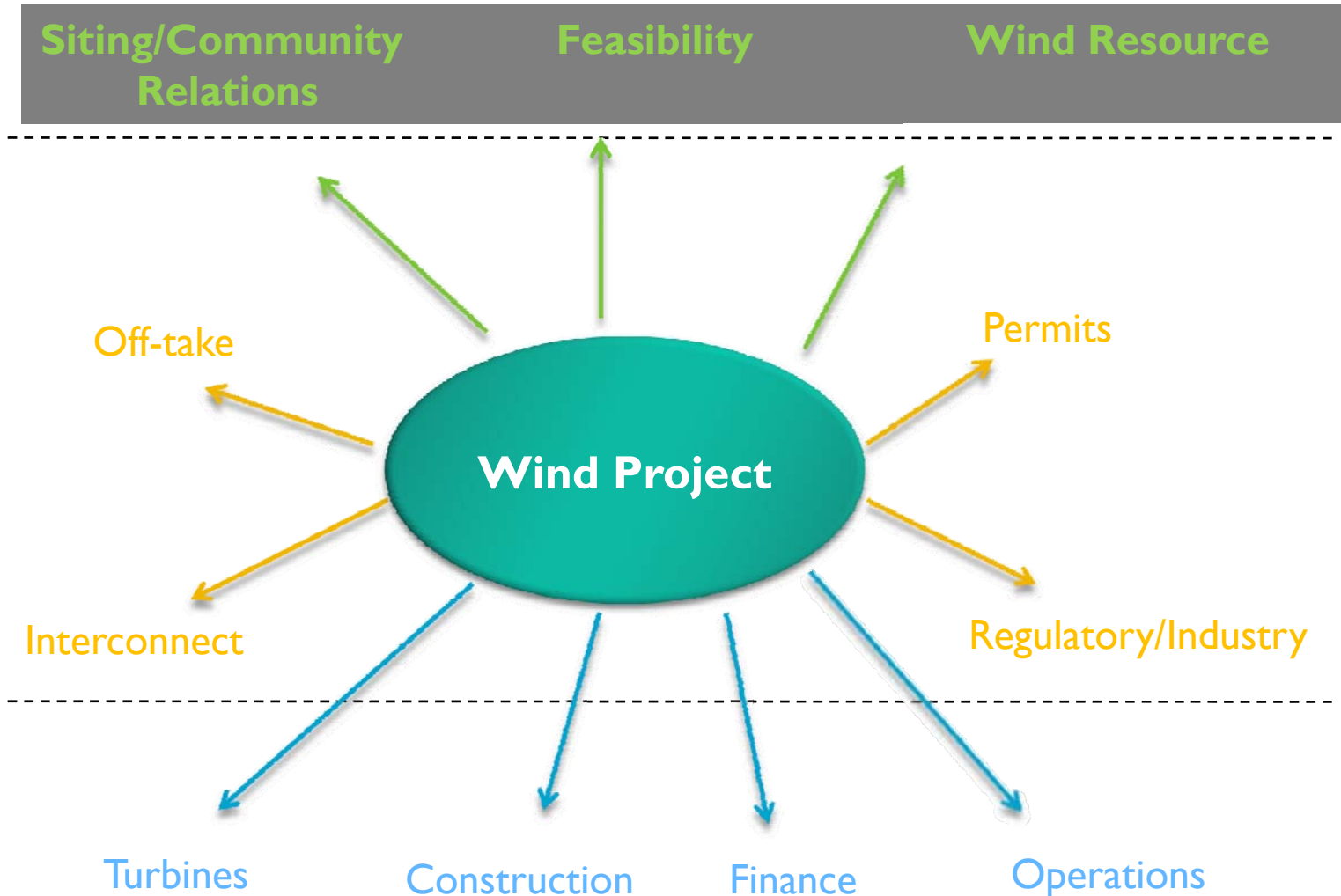
C&I's and Community Wind

Community Wind offers obvious benefits to the

Commercial/Industrial/Government partner including:

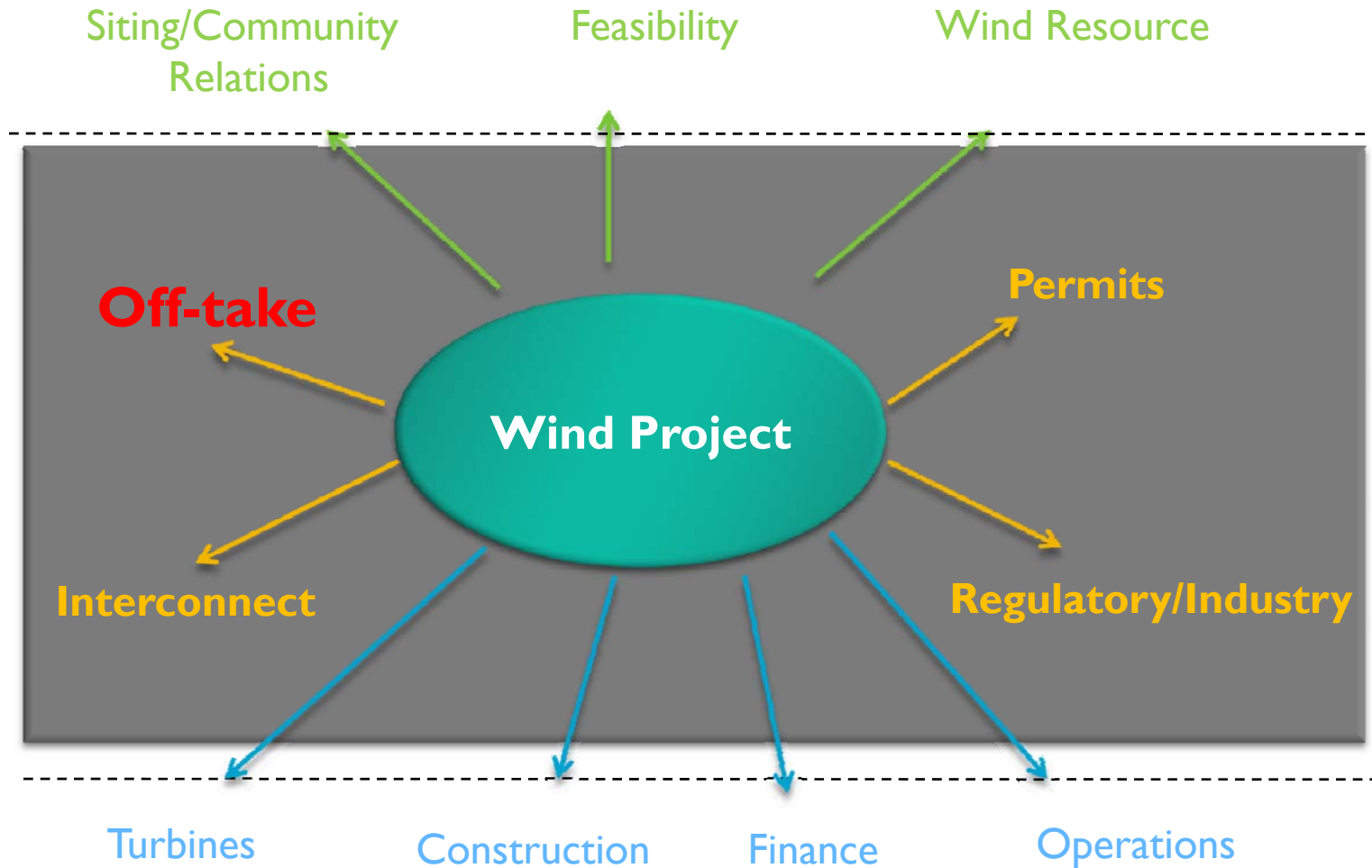
- ▶ Displacement of avoided cost floating rate power with a fixed rate wind resource
- ▶ Ownership of green credits and other renewable attributes
- ▶ Tax shield through government incentives for renewables
- ▶ Attractive ROI
- ▶ Compliance with internal corporate renewable goals \ public relations opportunity

C&I Partners – Instrumental in Early Stage



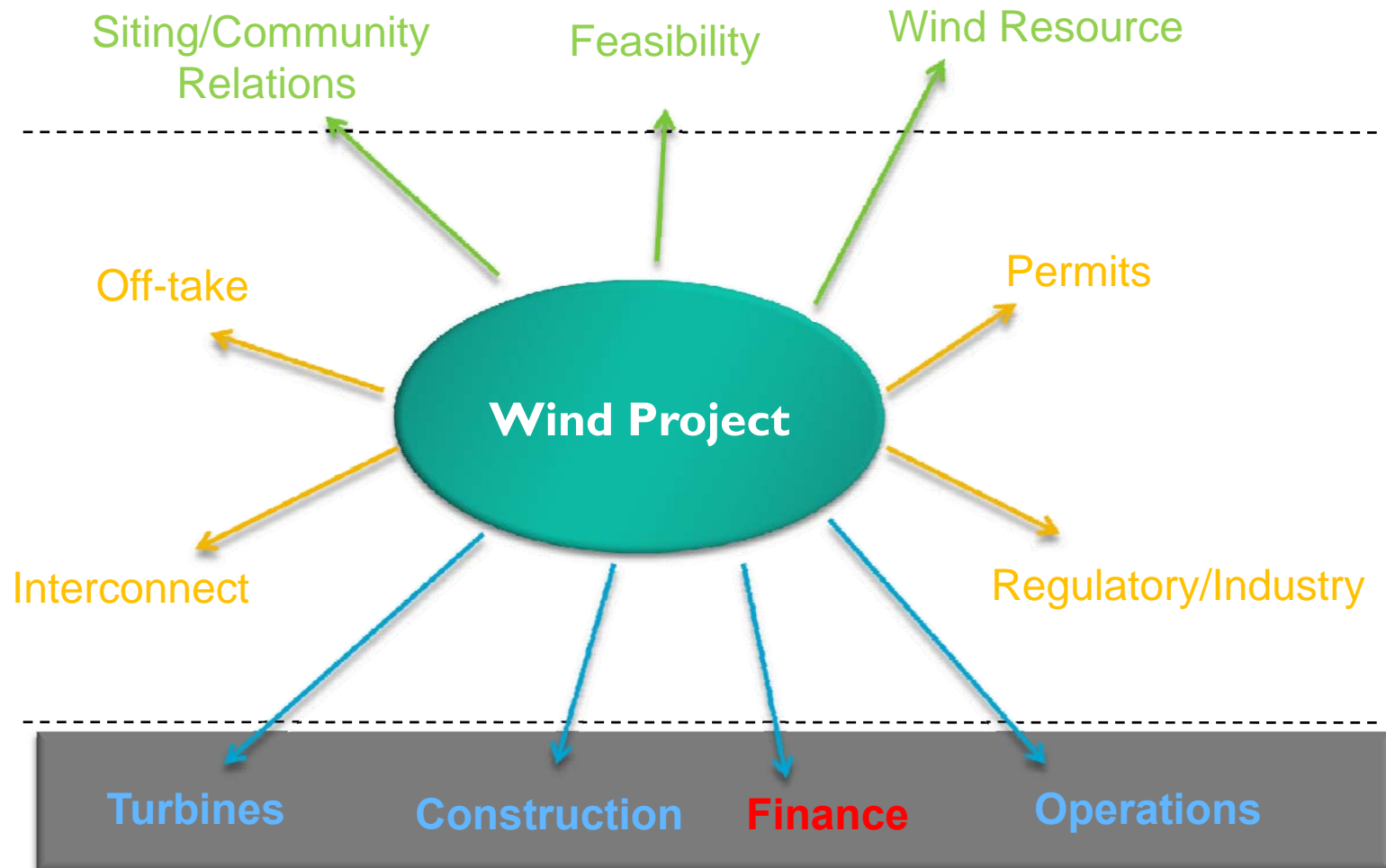
Developer Bridges Capital & Skill

...and C&I offtaker can make or break the project



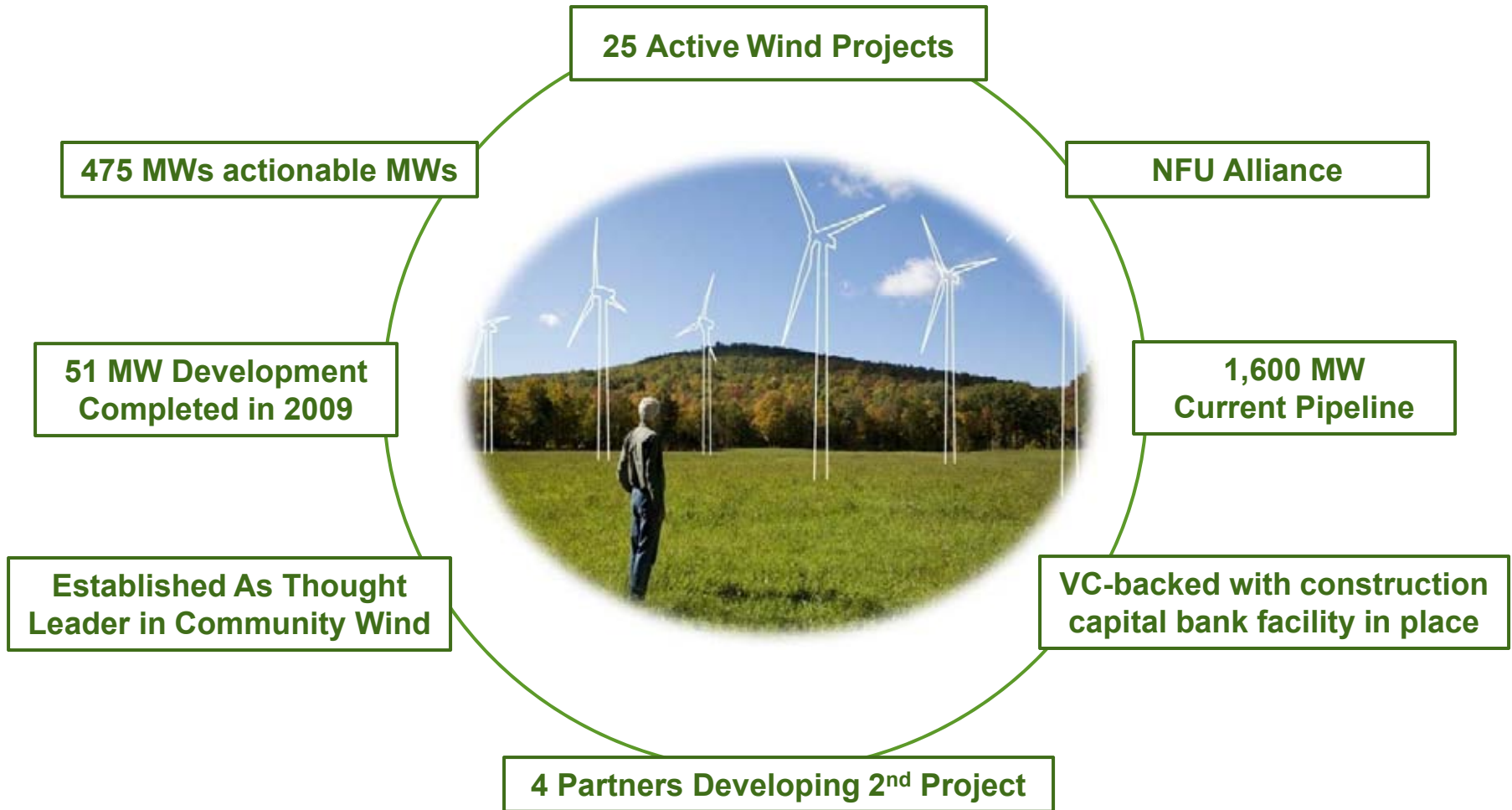
Developer – Drives to Completion

...and C&I investor can make an attractive ROI



OwnEnergy Highlights

Leader in “Community Wind” and Mid-Sized Project Development



How OE Works With Local Partners

**Local Landowners/
Developers/C&I's**



**Aggregator of Mid-Size,
Locally-Owned Projects**



Management Team

Jacob Susman, Founder and CEO



- Founder and CEO of OwnEnergy
- Founding member of Goldman Sachs' Alternative Energy Investing Group
- Co-led a portfolio financing for Horizon named Renewable Energy Deal of the Year
- Project Manager for the AES Corporation on a team that developed one of the largest power plants in Spain, named European IPP of the Year.
- Led AES's efforts to develop a Spanish renewable energy business
- Co-Chair of AWEA's Community Wind Working Group
- 2009 Chair of AWEA's Small/Community Wind Conference
- Nominated in 2010 to Crain's Top 40 Under 40
- MBA Wharton

Cynthia Crooks, VP of Development



- Former Manager in the FPL's wind construction group - 22 years at FPL/FPL Energy
- Led turbine procurement and efforts to resolve turbine warranty claims with various turbine suppliers

Ray Henger, Chief Financial Officer



- Former Managing Director in Credit Suisse's Power & Renewables Investment Banking Group
- 14 years investment banking experience (CS and DLJ) raising capital for companies and projects in the energy industry

Plus ten additional development professionals from Horizon, GE, Goldman, etc., many with advanced degrees, all who are passionate about renewable energy and our local partners

Contact Information

Jacob Susman
CEO & Founder
OwnEnergy, Inc.

jacob.susman@ownenergy.net
(646) 898-3694