



Port Angeles Landfill  
City of Port Angeles,  
Washington

## LMOP PROJECT EXPO

# 2009

### Port Angeles Landfill Overview

#### Open Year

1972

#### Closure Year

2006

#### Waste in Place

1,026,000 tons

#### Design Capacity

1,026,000 tons

#### Annual Acceptance

56,500 tons (2007)

#### Landfill Area

15 acres

#### Average Waste Depth

32 feet

#### Wells in Place

Yes

#### Flare in Place

Flaring approximately 475 scfm

#### Methane Content of Gas

Estimated at 40%

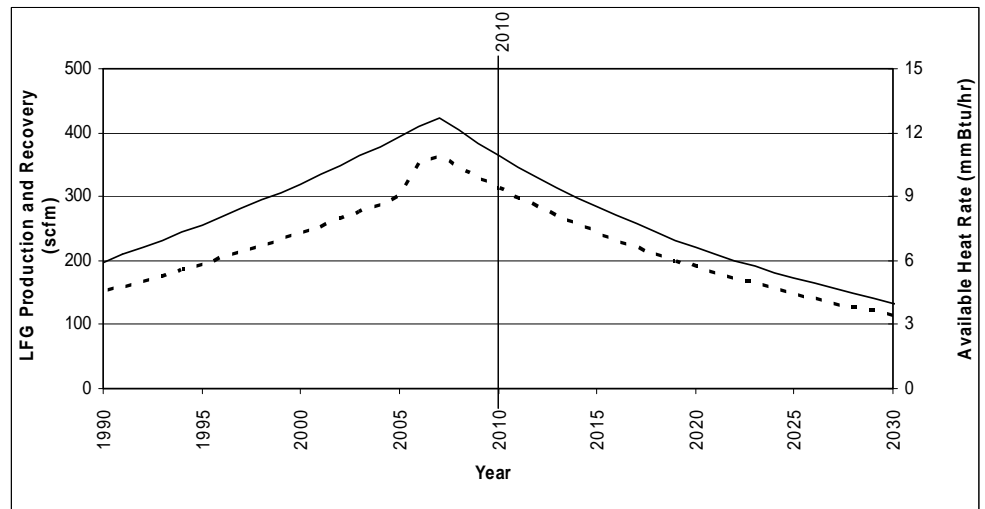
Port Angeles Sanitary Landfill reports that it is not currently required to collect and combust landfill gas under the Landfill NSPS/EG.

Collection of the landfill gas at an estimated extraction rate of 326 scfm in 2009 will result in direct destruction of methane gas and utilizing the gas to generate electricity offsets emissions from conventional electricity sources, equivalent to preventing emissions of **37,000 metric tons of CO<sub>2</sub>e per year**.

These emission reductions are equivalent to any one of the following annual environmental benefits for 2009:

- ◆ Annual greenhouse gas emissions from **6,800 passenger vehicles**
- ◆ Carbon sequestered annually by **8,400 acres** of pine or fir forests
- ◆ CO<sub>2</sub> emissions from **4,199,000 gallons of gasoline consumed**
- ◆ CO<sub>2</sub> emissions from **86,400 barrels of oil consumed**

### Landfill Gas and Energy Potential



— Gas Generation    - - - Gas and Heat Recovery  
LandGEM Peak Recovery Estimation: 360 scfm (in 2007)

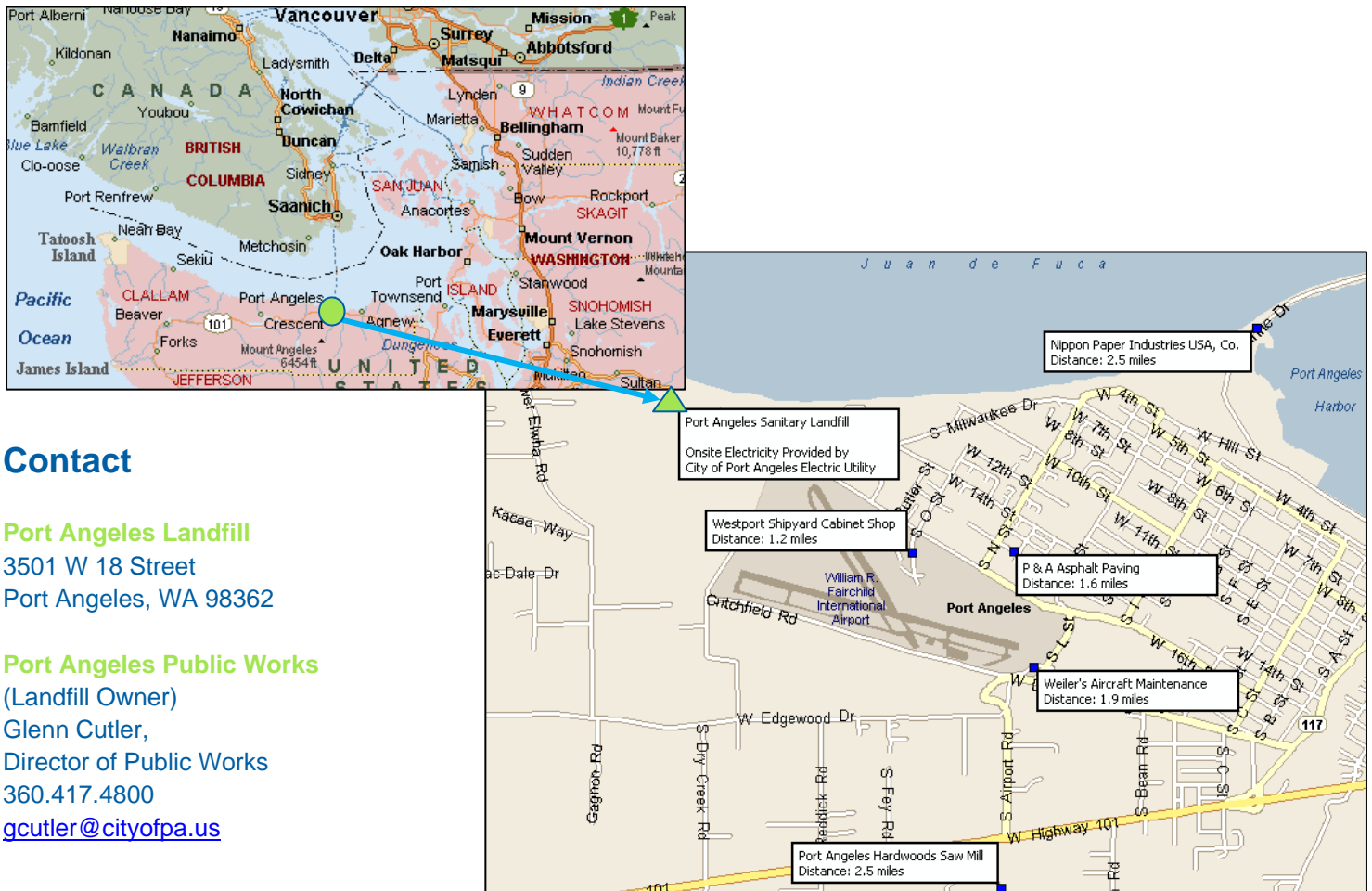
# Incentives for LFG Energy

The state of Washington currently offers the following incentives for LFG energy:

- ◆ Interconnection Standards – Washington Utilities and Transportation Commission adopted interconnection standards for distributed generation systems up to 20 MW in capacity.
- ◆ Mandatory Utility Green Power Option – All electric utilities serving more than 25,000 customers are required to offer them the option of purchasing renewable energy.
- ◆ Renewable Energy Standard – All electric utilities serving more than 25,000 customers must obtain 15% of their electricity from new renewable resources by 2020.
- ◆ Sales and Use Tax Exemption – Tax does not apply to the sale of equipment used to generate electricity from renewable energy sources and to the labor and services related to the installation of such equipment.

More information can be found at [www.wutc.wa.gov](http://www.wutc.wa.gov) and at [www.cted.wa.gov](http://www.cted.wa.gov).

## Landfill Location and Potential End Users



### Contact

**Port Angeles Landfill**  
3501 W 18 Street  
Port Angeles, WA 98362

**Port Angeles Public Works**  
(Landfill Owner)  
Glenn Cutler,  
Director of Public Works  
360.417.4800  
[gcutler@cityofpa.us](mailto:gcutler@cityofpa.us)