



2007 LMOP Project Expo



GASTON COUNTY LANDFILL
3155 Philadelphia Church Road
Dallas, North Carolina 28034

Owned by Gaston County

Owner Contact Information:

John Murray

704.922.0267

jmurray@co.gaston.nc.us



LANDFILL OVERVIEW



- Open Year: 1987 – unlined portion
1997 – lined portion
- Closure Year: 1997 – unlined portion
2018 – lined portion
- Waste in Place: 2.2 million tons
- Design Capacity: 2.4 million tons*
- Annual Acceptance: 99,800 tons/year
- Landfill Area: 29 acres (lined portion)
- Landfill Depth: 50 feet
- Flare in Place: No
- Methane Content of Gas: Estimated 50%

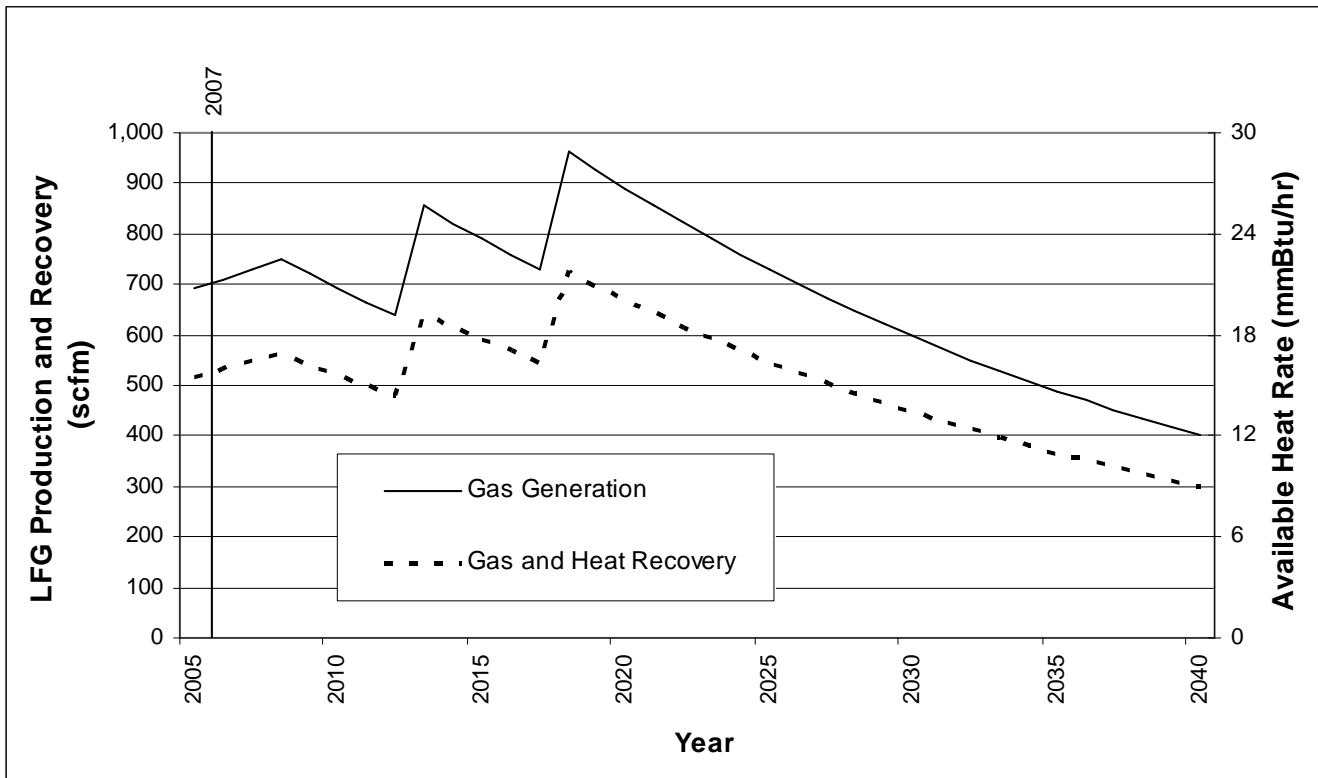
*Additional capacity is currently being designed to extend landfill lifetime to 2018.



LANDFILL GAS ESTIMATES*



Gaston County Landfill Dallas, North Carolina



- Gas Recovery Estimation – 724 scfm (peak at 75% collection efficiency)

*Gaston County provided landfill gas generation and recovery estimates by individual cells. LMOP summed these three individual LandGEM model runs to produce this graph.



LANDFILL LOCATION and POTENTIAL END USERS

