

# Updating to CAMEO 2.1

## From a Previous Version of CAMEO

Installing a new version of CAMEO will overwrite your data. To ensure that your data is successfully transferred to the new version, follow these instructions carefully.

### Phase 1: Before Installing CAMEO 2.1 - Exporting Your Data

1. **Make a folder called “CAMEOv21 Data Transfer”.** Place this folder anywhere on your computer that is convenient for you. This folder will be used to store all of the data files that you’ll need to complete the transfer of your existing data to CAMEO 2.1
2. **Start your current version of CAMEO.**
3. **Export the data from all CAMEO modules.**
  - From the File menu, select Import\Export, and then click Export.
  - Click Export ALL CAMEO data.
  - When prompted, browse to your CAMEOv21 Data Transfer folder, enter a name for the export file, and then click Save.
  - Click OK on the completion message, and click Done on the Import/Export Log.

CAMEO has created a zipped file that you will use later to transfer all of your existing data to your new version of CAMEO. The information in the zipped file includes all of the data on your CAMEO records, including any links to site plans or MARPLOT map objects. However, the site plans and map objects are not included in the zipped file.

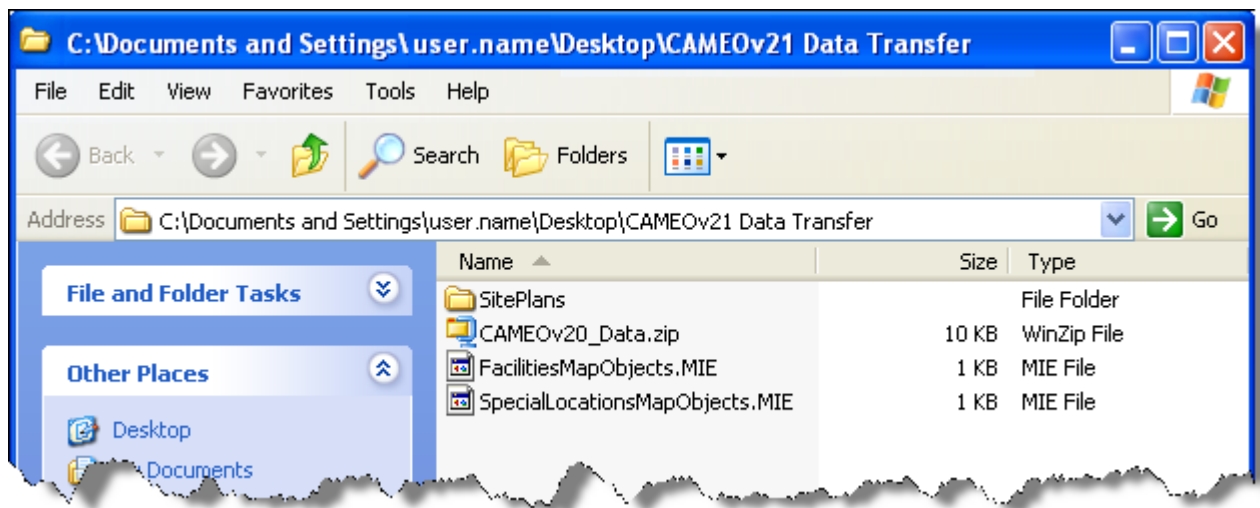
**Note:** You can skip the rest of the steps in Phase 1 if (1) you didn’t have any site plans or map objects in your previous version of CAMEO, or (2) you are a Windows CAMEO 2.0 user and you are planning on installing the new version in the same location as your previous version.

4. **Copy the SitePlans folder.** Make a copy of the SitePlans folder and place it in the CAMEOv21 Data Transfer folder.
  - Windows CAMEO 2.0 users: Your SitePlans folder is in the CAMEO Data folder, which is typically in one of these locations:
    - C:\Documents and Settings\All Users\Documents\CAMEO Data (Windows XP)
    - C:\Users\Public\Documents\CAMEO Data (Windows Vista)
  - Windows CAMEO pre-2.0 users: Your SitePlans folder is in the CAMEO folder, which is typically in the Program Files folder or on the main level of the C drive.
  - Macintosh users: Your SitePlans folder is in the CAMEO folder, which is typically in the Applications folder.

5. **Export your map objects to MIE files.** (MIE files are specially formatted text files that MARPLOT uses for importing and exporting data.)

- Open a module that has records linked to map objects. Make sure all records in that module are showing, by selecting Show All Records from the Records menu.
- From the Sharing menu, select MARPLOT, then Show All on Map. The map objects linked to records will be selected and displayed in MARPLOT.
- While the objects remain selected, from MARPLOT's File menu, select Export Overlay Objects.
- Set up the export by selecting the "selected objects" and "MARPLOT Import/Export (MIE)" options, and then click Export.
- When prompted, browse to your CAMEOv21 Data Transfer folder, enter a name for the export file, and then click Save.
- Repeat this process for each module that has records linked to map objects.

Your CAMEOv21 Data Transfer folder should now contain all of the files you'll need to transfer your data to the new version of CAMEO. Your folder will look something like the one below.



## **Phase 2: Before Installing CAMEO 2.1 - Backing Up Your Data**

It is always a good idea to make a backup copy of your existing data that you can use as an archive, because installing the new version of CAMEO will overwrite your data.

1. **Quit your current version of CAMEO.**
2. **Make a zipped copy of your CAMEO data.**
  - Windows CAMEO 2.0 users: Zip your CAMEO Data folder, which stores all of your data (CAMEO records, site plans files, and MARPLOT map objects).
  - Macintosh users and Windows CAMEO pre-2.0 users: Zip your CAMEO folder. (Macintosh users use Compress or Archive.)

## **Phase 3: Downloading and Installing CAMEO 2.1**

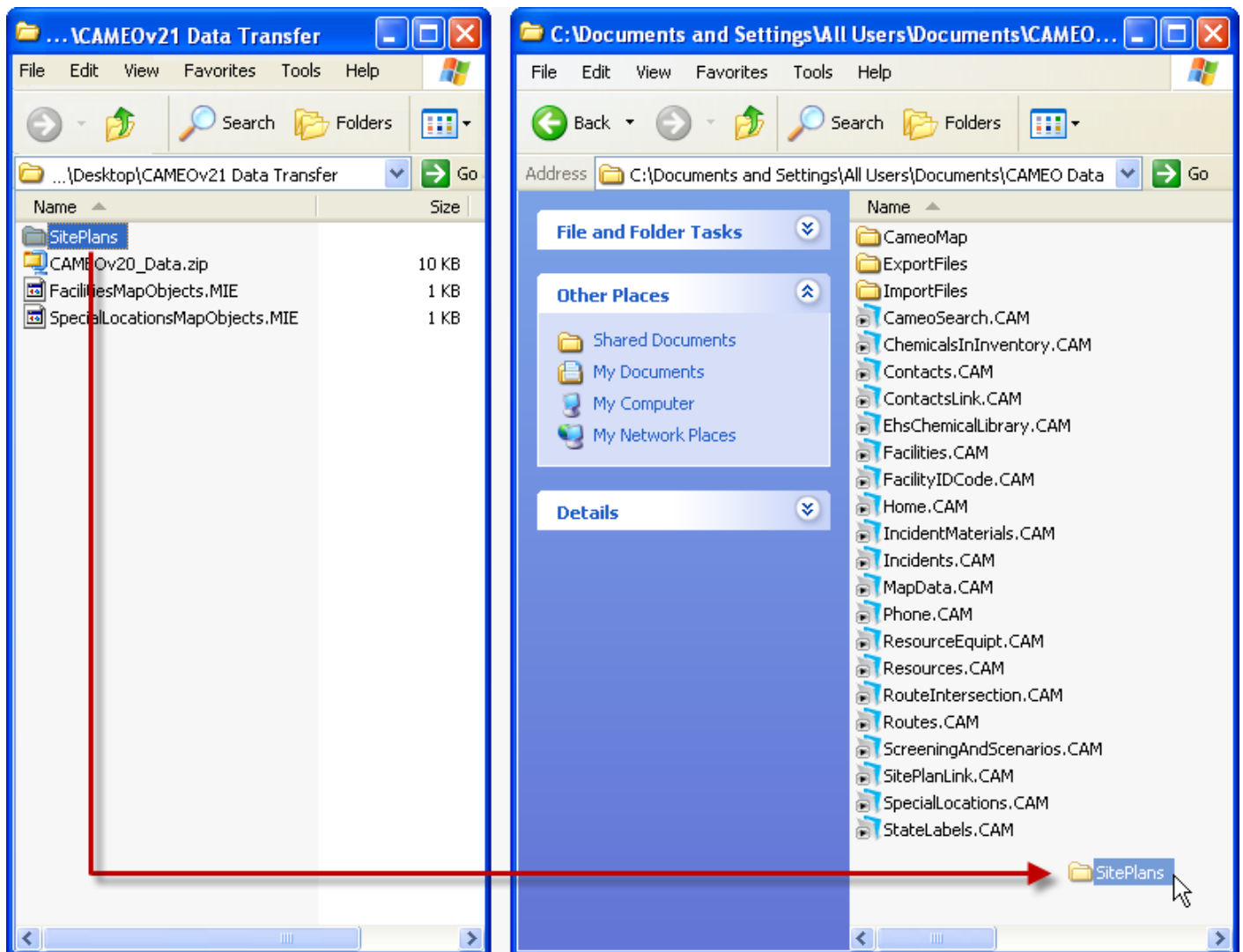
**Windows users:** Download and run the installer. By default, the installer will place the program files in the CAMEO folder and the data into the CAMEO Data folder in a different location (to make the program compatible with write permission restrictions). You can choose the locations for these folders during the installation process.

- CAMEO 2.0 users: We recommend installing your new version of CAMEO in the same location that you used for CAMEO 2.0, because it will simplify the transfer process.
- CAMEO pre-2.0 users: Delete your current CAMEO folder (you already made an archived copy in Phase 2). Allow the CAMEO 2.1 installer to create separate folders for the CAMEO program and the CAMEO data.

**Macintosh users:** Download and open the installer .dmg file. Drag the CAMEO folder into your Applications folder. It will overwrite any existing folder, but you already made an archived copy in Phase 2.

## Phase 4: Transferring Your Data and Synchronizing the Programs

1. **Transfer the site plan files.** Skip this step if you didn't have any site plans in your previous version of CAMEO, or if you are a Windows CAMEO 2.0 user and you installed the new version in the same location as your previous version.
  - Open your CAMEOv21 Data Transfer folder.
  - Macintosh users:
    - In another window, open your new CAMEO folder.
    - Copy the SitePlans folder from your CAMEOv21 Data Transfer folder into your CAMEO folder.
  - Windows users:
    - In another window, open your new CAMEO Data folder.
    - Copy the SitePlans folder from your CAMEOv21 Data Transfer folder into your CAMEO Data folder.



2. **Synchronize CAMEO 2.1 and MARPLOT so that they will work together.**
  - Start CAMEO 2.1.
  - Start MARPLOT.
  - Quit both programs.
  
3. **Import your old CAMEO data.**
  - Start CAMEO 2.1
  - From CAMEO's File menu, select Import\Export, and then Import.
  - Browse to the export file that you stored in your CAMEOv21 Data Transfer folder, then click Open. CAMEO will import all of your old records that you saved into the export file.
  - Click OK on the completion message and click Close on the Import/Export Log.
  
4. **Import your MARPLOT map objects.** Skip this step if you didn't have any map objects in your previous version of CAMEO, or if you are a Windows CAMEO 2.0 user and you installed the new version in the same location as your previous version.
  - Start MARPLOT.
  - In MARPLOT, from the File menu, select Import.
  - Browse to the first MIE file in your CAMEOv21 Data Transfer folder, and then click Open. The map objects are then added to the CAMEO Map (if there isn't already a map overlay for the objects, a new overlay will be created).
  - Repeat for each MIE file in your CAMEOv21 Data Transfer folder.

Now that you've transferred all of your existing data to CAMEO 2.1, you can begin to work with the new program. You created an archive copy in Phase 2, so you can delete your CAMEOv21 Data Transfer folder.

**CAMEO pre-2.0 users:** Beginning with CAMEO 2.0, the chemical library module and reactivity prediction tool are provided in a separate program (CAMEO Chemicals); those features are no longer installed with CAMEO. To use those features, you need to download and install the desktop version of CAMEO Chemicals, which is available at <http://response.restoration.noaa.gov/cameochemicals>.