



ENDANGERED SPECIES PROTECTION

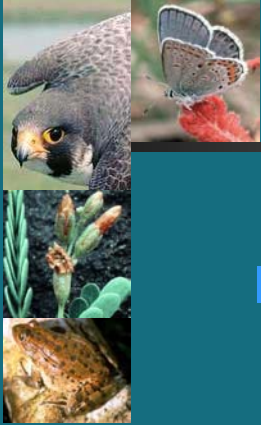
Presentation for Discussion with the Pesticide Program
Dialogue Committee (PPDC)

May 25, 2004



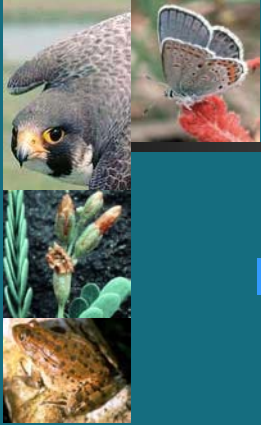
Update on Activities

- Counterpart Regulations
 - Proposed January 2004
 - Services and EPA organizing comments for review
 - Final regulations this summer



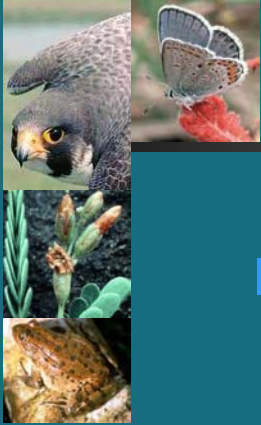
Update on Activities

- Field Implementation
 - Proposed December 2002
 - Drafting final approach based on comments
 - Final publication this fall



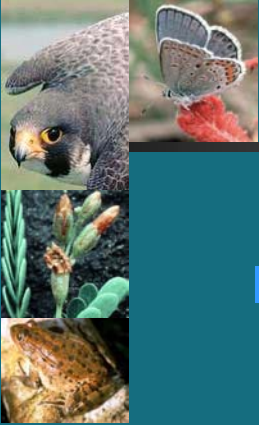
Update on Activities

- Internal Process Activities
 - Undertaking workflow analysis and process planning
 - Staffing shifts to ensure adequate resources for ES reviews
 - Exploring tracking and planning tools of value
 - Identifying IT enhancements



Sense of the Universe

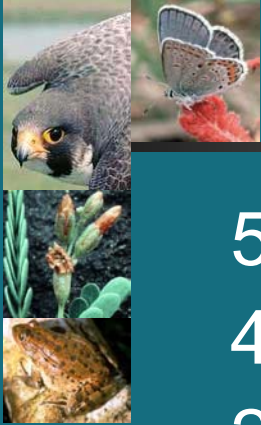
- >600 Pesticide Active Ingredients
 - Used to formulate over 1900 pesticide products
 - Each product having 1 to potentially 100+ uses
- >1200 listed threatened and endangered species
 - In one or more of approximately 2000 of the 3000 counties in the U.S.



Sense of the Universe

■ Assume

- Typical AI has 5 products
- Each with 4 different use sites
- Levels of concern exceeded for 2 groups (mammals and fish)
- 3 mammals are in areas of potential use
- 10 fish are in areas of potential use



Sense of the Universe

5 products x

4 use sites = 20 scenarios

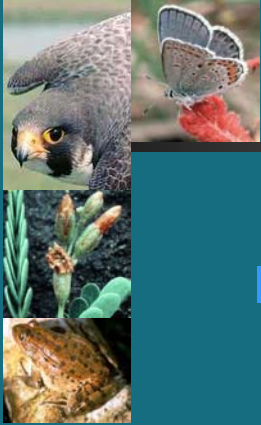
20 scenarios x

3 mammals = 60 determinations

20 scenarios x

10 fish = 200 determinations

THUS – could be 260 geographically discrete determinations for this one AI.



Overall Objectives

- Full compliance with ESA
- Efficient use of resources
- Effective, quality decisions



Challenges

- Develop a sustained approach to full ESA compliance
- Achieve compliance expeditiously and effectively
- Balance complexity with efficiency while ensuring quality assessments
- Ensure appropriate public participation in ES assessments and in field implementation



Reregistration

- Review of pesticides registered prior to 1984
 - 612 cases overall
 - Approximately 155 decisions remaining
 - Food-use decisions by August 2006
 - Non-food use decisions by October 2008



Registration

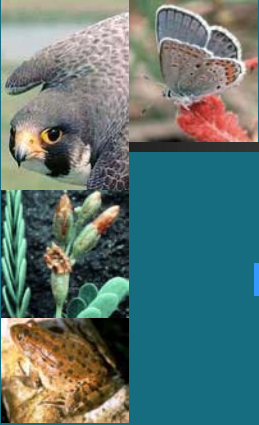
- Under Pesticide Regulatory Improvement Act (PRIA) EPA to establish fee-for-service system
 - Establishes set time frames for decisions
 - 25 to 30 new active ingredients and 200 to 300 new use decisions/year
 - Fee-for-service authorized to September 2010



Registration Review

- Food Quality Protection Act (FQPA) requires review on a 15 year cycle
 - ANPR published April 2000
 - Proposal for comment anticipated February 2005
 - Final program in place August 2006
 - Anticipate reviewing approximately 80 chemicals/year

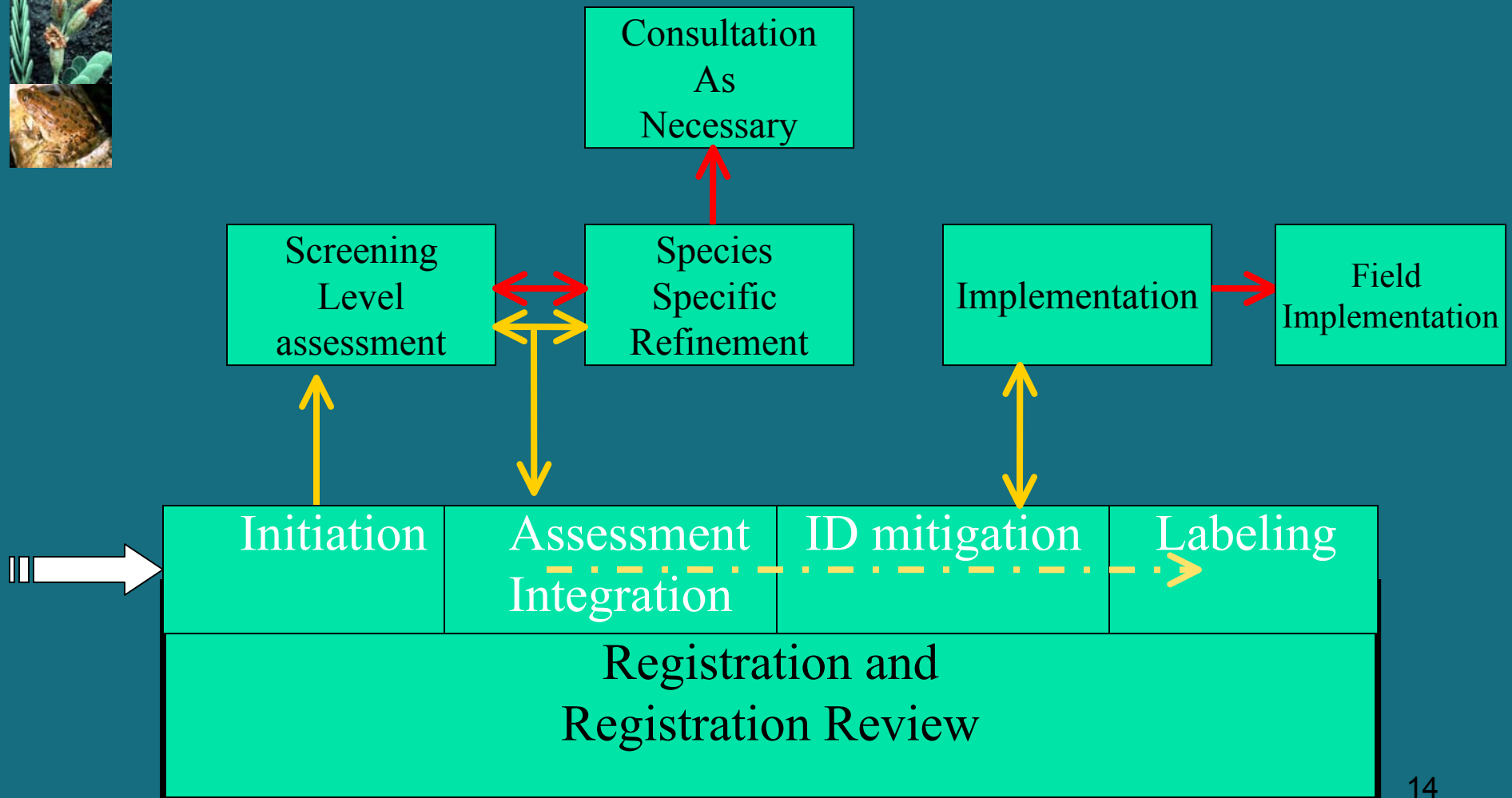
Endangered Species Assessments



- Assessments conducted outside registration and reregistration processes
- Currently based on court orders related to specific species or pesticides
 - Pacific salmonids
 - Atrazine
 - Barton Springs salamander
 - CA red-legged frog



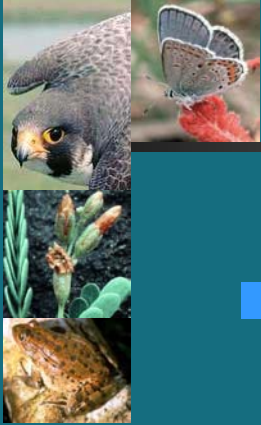
General Process





Chronological by Action





Longer Term

- Assessments and limitations based on review of entire pesticide
- Assessments conducted within the registration, reregistration and registration review processes



What this Achieves

- Registration and reregistration decisions address potential risk to all listed species
- Provides pesticide users with certainty
- Stops any increase in backlog of ES determinations
- Takes advantage of existing public participation processes



Questions for the PPDC

- What are the Committee members' general thoughts on this approach?
- Will this approach achieve adequate public participation in ES assessments?
- What other specific topics relative to ESA compliance would the committee have interest in discussing with the Agency in the future?