

Manufacturer: O-I  
Model: PursePak  
ASTM Type: IIA

Description:

This is a two piece plastic lug-bayonet closure (Figure 1).



Figure 1

The closure is opened by pushing down on the closure and simultaneously turning it counterclockwise. The interior of the closure has 4 square lugs (as shown with arrows in Figure 2A) that fit into the “L” shaped bayonets on the container neck (shown with arrow Figure 2B) to keep the package closed.

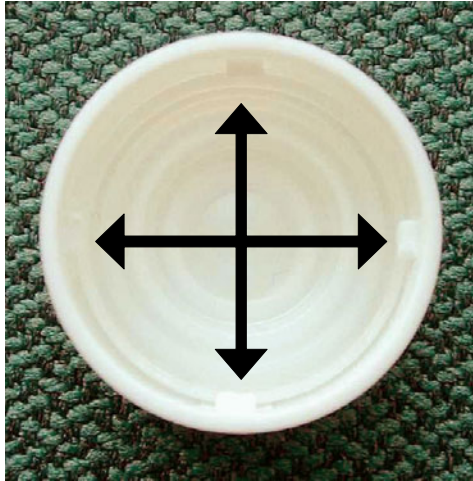


Figure 2A

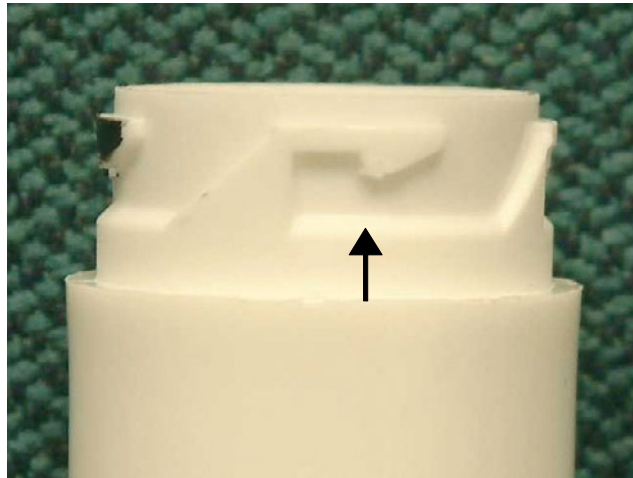


Figure 2B

The manufacturer's instructions on the closure are (Figure 3):



Figure 3

(arrow counterclockwise) TO OPEN  
PUSH

DOWN  
THEN TURN (arrow counterclockwise)