

# Martinsburg, West Virginia Chesapeake Bay TMDL Public Meeting Summary

November 4, 2009

Robert C. Byrd Health and Science Center  
2500 Foundation Way  
Martinsburg, WV 25401

Agenda .....	page 2
Attendee Details.....	page 3
Power Point Presentation.....	page 4
Questions Answered.....	page 26
Questions Submitted.....	page 29
Comments.....	page 31

## **Agenda for Martinsburg, West Virginia Chesapeake Bay TMDL Meetings**

- Welcome, introductions, and meeting logistics – **Moderator, Joe Hankins**
- EPA presentation of the Chesapeake Bay TMDL and EPA expectations – **Rich Batiuk and Bob Koroncai, EPA**
- West Virginia's next steps and development of the Watershed Implementation Plan - **Alana Hartman, WV DEP**
- Public comments, questions and answers – **Moderator, Joe Hankins**
- Adjourn

## Attendee Detail

Webinar Register: 33

Webinar Attended: 21

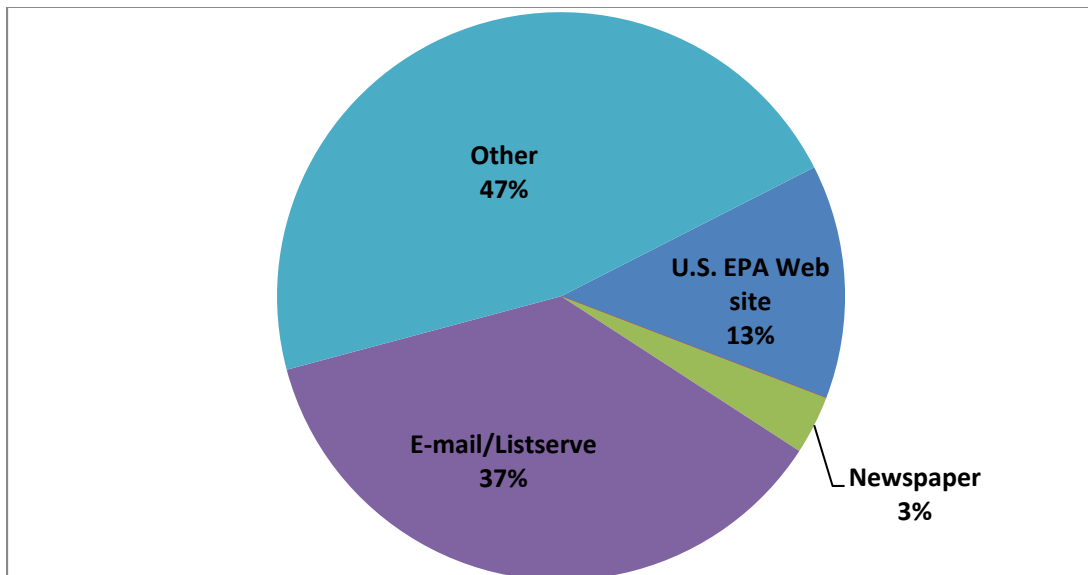
On-Site: 80

**Total Attendees: 101**

### **Registration Question:**

How did you hear about this Meeting?

- Other (14)
  - Chesapeake Bay Implementation Committee (2)
  - Work (2)
  - Word of Mouth (2)
  - Radio
  - WVDEP
  - Local PSD
  - Extension Service
- E-mail/Listserve (11)
- U. S. EPA Web Site (4)
- Newspaper (1)
- Other Web Site \_\_\_\_\_ (0)



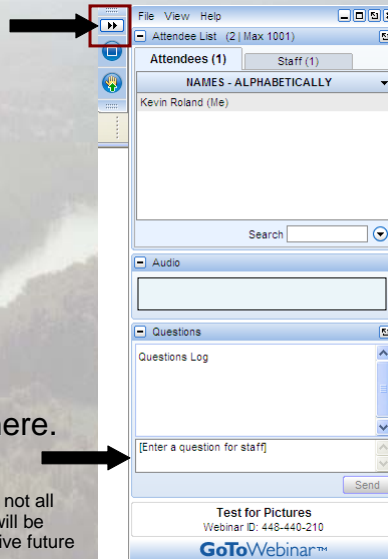
# THE CHESAPEAKE BAY TMDL: Restoring Waters of West Virginia and the Chesapeake Bay

Bay TMDL Public Meeting  
November 4, 2009  
Martinsburg, WV

Rich Batiuk and Bob Koroncai  
U.S. EPA Region III



- Click the double arrow to show or hide your control panel



- Type your questions here.  
(Indicate organization)

Note: Because of the large audience, not all questions will be answered, but they will be saved, and your questions will help drive future events and could contribute to a FAQ.





## Technical Issues?

Contact:

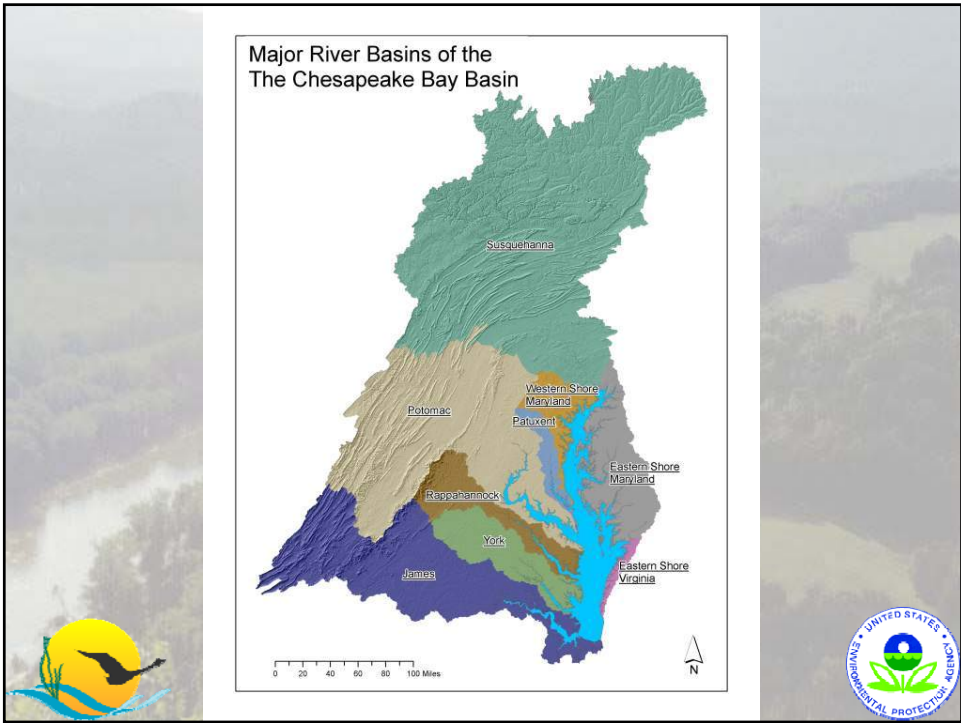
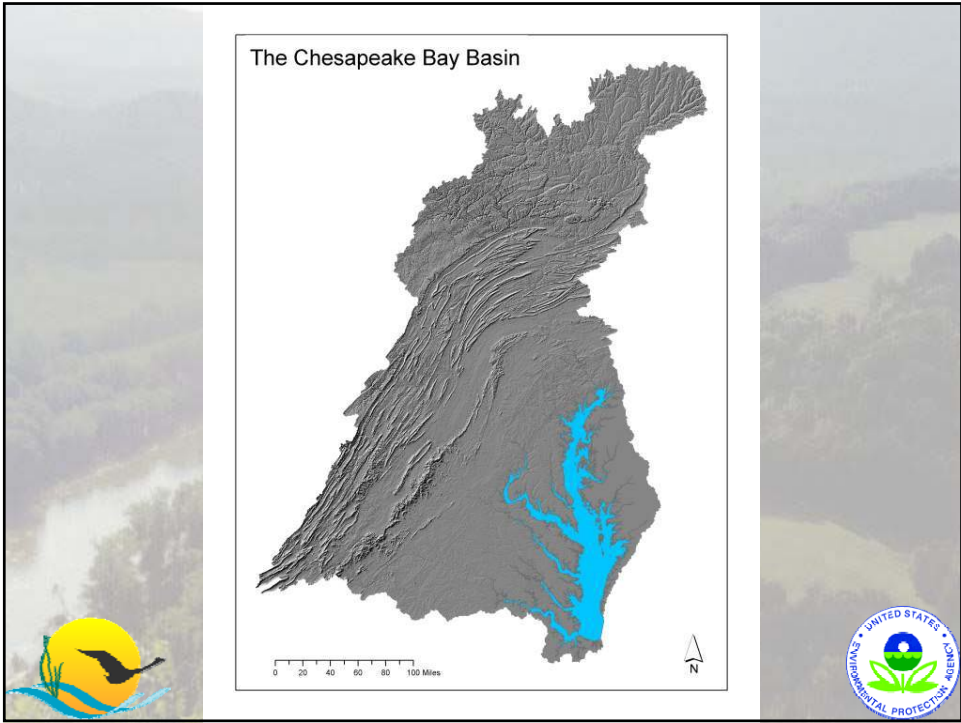
- Citrix Global Customer Support  
1-800-263-6317

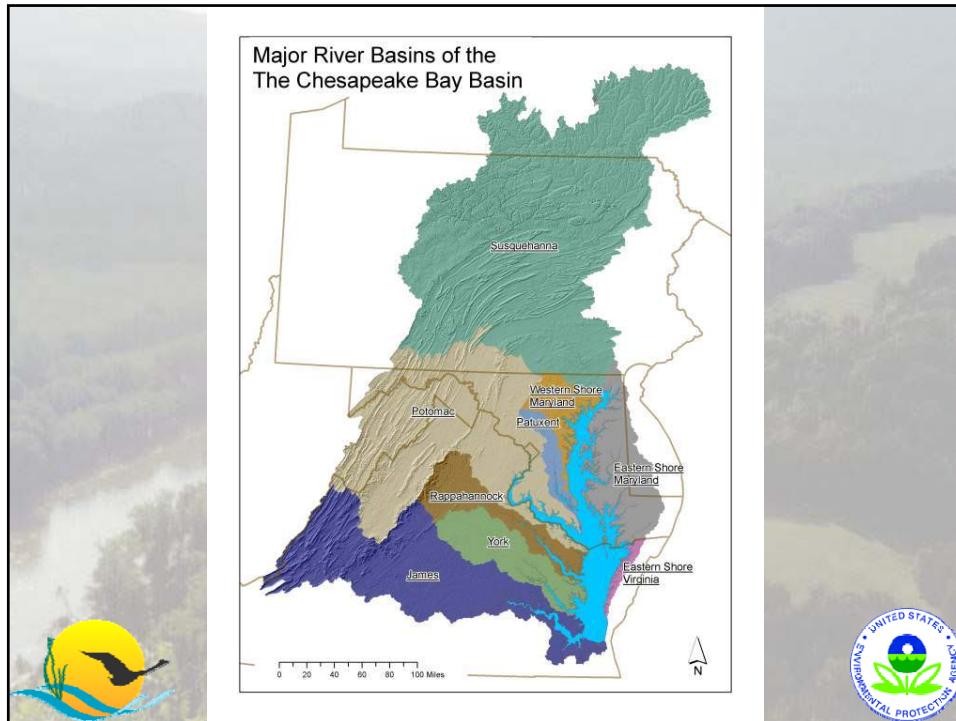


## AGENDA

- Welcome, introductions, and meeting logistics –  
Joe Hankins, Conservation Fund (5 minutes)
- EPA presentation of the Chesapeake Bay TMDL  
and EPA expectations – Rich Batiuk and Bob Koroncai,  
EPA (45 minutes)
- West Virginia's next steps and development of  
the Watershed Implementation Plan - Alana Hartman,  
WV DEP (10 minutes)
- Public comments, questions and answers - Joe  
Hankins 60 minutes)
- Adjourn







## West Virginia's Potomac River and Chesapeake Bay Basin

- Over 14% of West Virginia drains into the Potomac River and on to the Chesapeake Bay --that's 2,294,349 acres
- The Chesapeake Bay watershed in West Virginia includes Berkeley, Grant, Hampshire, Hardy, Jefferson, Mineral, Morgan, and Pendleton, and small portions of Preston and Tucker counties
- A small area of Monroe County also forms the headwaters of the James River



## Local Water Quality Issues



## Local Water Quality Issues



“If this water was like it should be, there’d be bass in here (Opequan Creek).”

Walter Hess

*Martinsburg Journal*  
3/29/09



# Local Water Quality Issues



Stream off South Branch of Potomac



Mill Creek, Baker Heights



# Local Water Quality Issues



- “Out here in the Eastern Panhandle, we do tend to have the worst scores (for variety of life forms found in waterways), especially in the Opequon.”
- “We’re all part of the problem, so we can all be part of the solution. The Opequon is a beautiful thing to protect and treasure...”

Alana Hartman, WV DEP  
Martinsburg Journal, 2009



## Local Water Quality Issues

- One of the major findings ... was the presence of intersexual characteristics in smallmouth and largemouth bass in the Potomac River and its tributaries.



USGS, FWS Study  
*Frederick News Post*, 10/25/09



## Chesapeake Bay Water Quality Issues



## Chesapeake Bay Watershed- By the Numbers

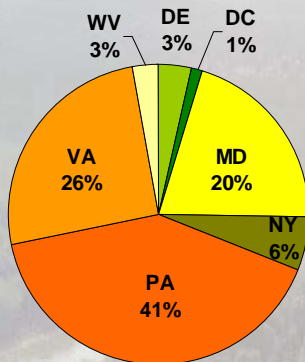
- Largest U.S. estuary
- Six-state, 64,000 square mile watershed
- 10,000 miles of shoreline (longer than entire U.S. west coast)
- Over 3,600 species of plants, fish and other animals
- Average depth: 21 feet
- \$750 million contribution annually to local economies
- Home to 17 million people (and counting)
- 77,000 principally family farms
- Declared "national treasure" by President Obama



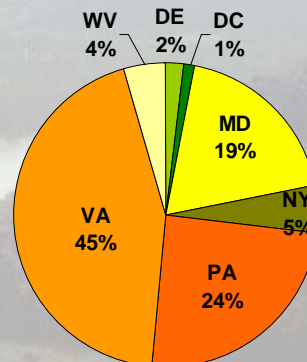
Source: [www.chesapeakebay.net](http://www.chesapeakebay.net)



## Nutrient Loads by State



Nitrogen\*



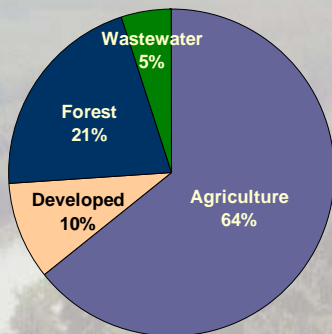
Phosphorus

\*EPA estimates a nitrogen load of 284 million lbs nitrogen in 2008. EPA assumes a reduction of 7 million lbs due to the Clean Air Act. This leaves 77 millions lbs to be addressed through the TMDL process.

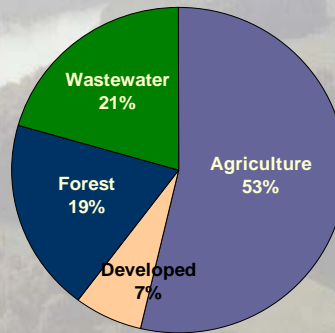


# Nutrient Sources of WV

Sources of Nitrogen from West Virginia



Sources of Phosphorus from West Virginia



N and P values from 2008 Scenario of Phase 5.2 Watershed Model



# Chesapeake Bay Health- Past and Future

