

Allendale Dam

November 2001

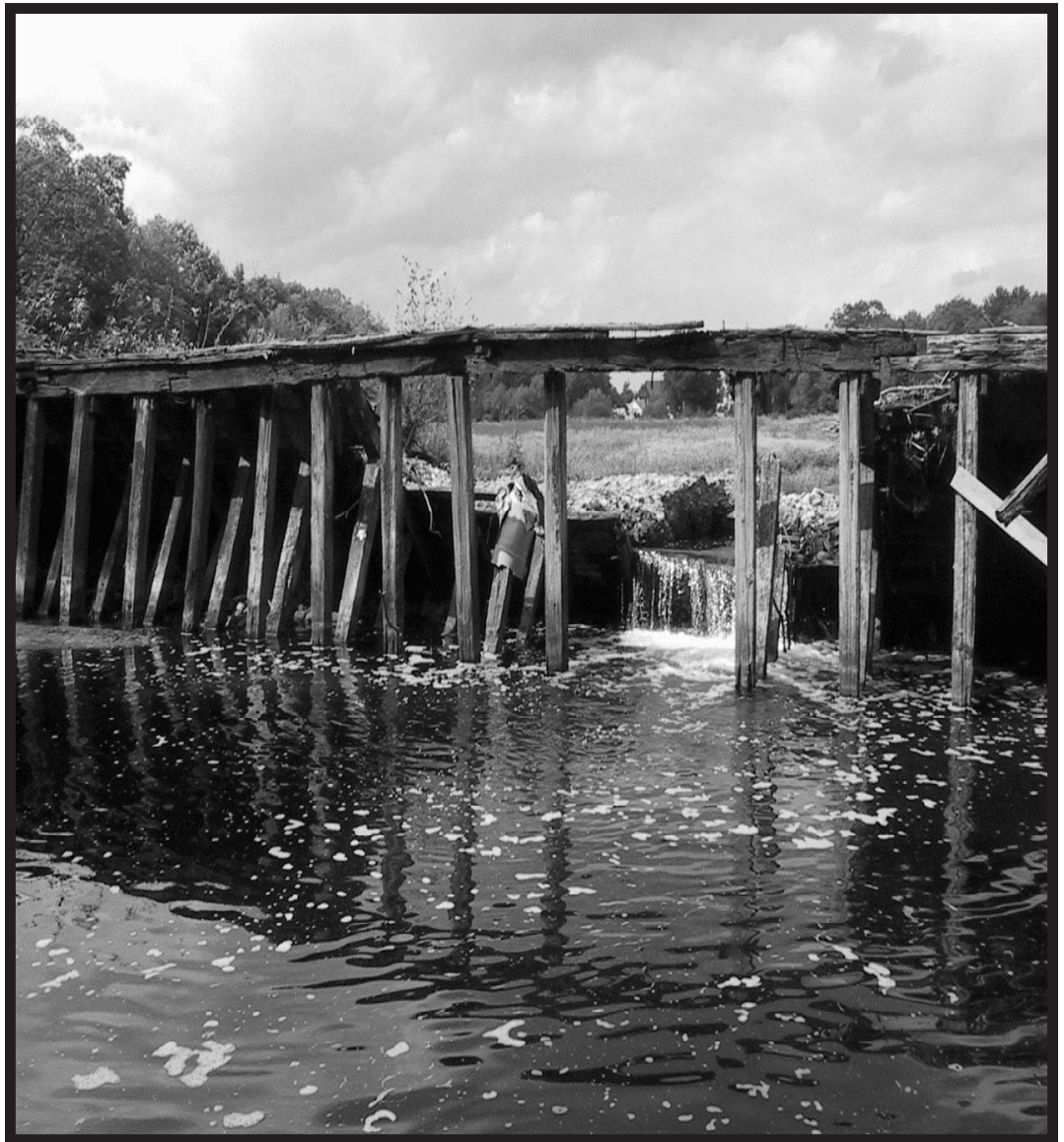


Centredale Manor Restoration Project: Site Activity Update

The Non-Time Critical Removal Action is well underway at the Centredale Manor Restoration Project. This phase of the cleanup includes the removal of the remnants of Allendale Dam and the construction of a new dam in its place.

Restoring the dam will bring the water level in Allendale pond back to pre-1991 levels, the year the dam was breached. Raising the water level in the pond will restore Allendale Pond; reduce exposure to contaminated sediments on the bottom of the pond; and prevent contaminated sediments from moving further downstream.

Loureiro Engineering, Associates is conducting the cleanup and restoration phase of the project on behalf of several private parties funding the project, with oversight from EPA, RI DEM and the U.S. Army Corps of Engineers. Following are photos of the construction work.



The existing dam structure at Allendale Pond

Restoring the Allendale Dam:



The photo on the left shows the original Allendale Dam with the river flowing through the breach in the dam. Two coffer dams (second and third photos) have been installed. One is upstream and the other is downstream of the original structure. The coffer dams keep water from flowing through the original dam and into the work area, allowing the construction work to take place in dry conditions. The coffer dams will remain until the new dam is fully constructed.



Soil, sediment and debris from the footprint of the new dam were removed, and the debris, contaminated soil and sediment are being sent to an off-site facility for treatment and disposal. In addition to diverting the river around the construction site, the work area was continuously dewatered and the water treated before it was returned to the river.



Water is being diverted around the work area and through the sluiceway. The wing wall of the dam, shown in the first photo, has been rebuilt and lengthened (second and third photos) so that the river water flows through the sluiceway until it is below the downstream coffer dam.

Mayor Mollis toured the construction site in early November to see first hand how the project is coming along. The Mayor is shown here standing to the side of the upstream coffer dam. Allendale Pond is in the background. With him is Scott Miller, the construction manager for Loureiro Engineering, Associates.



"I'm pleased to see this phase of the cleanup underway. North Providence residents have been waiting a long time to see the Allendale Dam restored." - **A. Ralph Mollis**



Dick Boynton, EPA Team Leader; Scott Miller, Construction Manager for Loureiro Engineering, Assoc; and North Providence Mayor, A. Ralph Molis tour the construction site at Allendale Dam.

For More Information Contact:

Anna Krasko
U.S. EPA, Project Manager
617-918-1232

Angela Bonarrigo
U.S. EPA, Community Involvement
617-918-1034

Sarah Martino
RI DEM, Engineer
401-222-4700 x 7149

Bob Vanderslice
RI Department of Health
401-222-3434 x 2103

Remember to Use the Woonasquatucket River Responsibly:

Walking, running or bike riding along the river are acceptable activities, as are paddling a canoe or kayak on the river.

Do not eat fish, turtles, eels or plants from the Woonasquatucket River.

Do not wade in the shallow water or swim in the river.

Do not walk on the exposed mud in Allendale Pond.

Obey the warning signs posted along the river.

Remember to wash thoroughly after any contact with the river water or sediment.