



September 4, 2008

Ms. Carolyn Casey
US EPA Region 1
1 Congress Street
Suite 1100-HBT
Boston, MA 02114-2023

Re: 2008 Annual Groundwater Monitoring
Risdon Corporation, Danbury, CT
CTD001168558

Dear Ms. Casey:

This letter has been prepared to summarize the results of the 2008 annual groundwater monitoring performed at the former Risdon facility located at 15 Old Newtown Road in Danbury, Connecticut. Specifically, at your request, the data is presented in this letter to evaluate this most recent sampling round as it pertains to the Environmental Indicator (EI) CA 750 Migration of Contaminated Groundwater Under Control. On September 21, 2006, a revised EI CA 750 was submitted to the Agency; however, a "No" code is currently listed for the facility with respect to this EI.

A review of the current groundwater analytical data indicates that concentrations of both VOCs and inorganics have decreased significantly since monitoring began in the late 1980's/ early 1990's. In addition, notable decreases in concentrations have been observed in select areas within the past few years with the operation of the hydraulic containment groundwater treatment system. The overall decrease in VOC and inorganic levels over time and the decrease and/or stability of contaminants over the past few years demonstrates the effectiveness of the hydraulic containment groundwater treatment system and that migration of contaminated groundwater has stabilized and is under control. Therefore, it is our opinion that the continued operation of the hydraulic containment groundwater treatment system (as part of the on-property remedy) and the most recent round of groundwater data support the finding that the migration of contaminated groundwater has stabilized, such that the contaminated groundwater is expected to remain within the "existing area of contaminated groundwater".

During the 2008 annual groundwater monitoring activities, groundwater samples were collected between August 12 and 14, 2008 from 20 monitoring wells. The groundwater monitoring was performed in accordance with the September 2005 Operation, Maintenance and Monitoring (OM&M) Plan for the hydraulic containment groundwater treatment system operating at the site. In addition to the sixteen wells sampled as part of the annual monitoring event, three additional wells from the former metal finishing area [(MFA) RW-108A, RVW-104 and MW-503A] were sampled to evaluate current conditions within the source areas and upgradient well MW-507 was also sampled, per the request of USEPA during the comment period of the preparation of the on-property Remedial Action Plan (RAP). Groundwater samples were analyzed for volatile organic compounds (VOCs) via EPA Method 8260B with CT Reasonable Confidence Protocols (CT RCP), cyanide and/or the 13 priority pollutant metals. The following table indicates the analysis performed for the specific monitoring wells sampled. The locations of the wells are shown on Figure 1.



Groundwater Quality Monitoring Analytical Testing Summary

Monitoring Well	ANALYSIS		
	VOCs CT RCP 8260B	Total Cyanide	13 Priority Pollutant Metals
CA 750 Monitoring Wells			
MW-1	X	X	X
MW-2	X	X	X
MW-3	X	X	X
MW-8	X	X	X
MW-9	X		
MW-10	X	X	X
MW-11	X	X	X
MW-14	X		
MW-15M	X	X	X
MW-111	X	X	X
MW-112	X		
MW-113	X	X	X
MW-508	X		
MW-508C	X		
MW-601B	X	X	X
2ONR-MW-1A	X	X	X
MFA Wells			
RW-108A	X	X	X
RVW-104	X	X	X
MW-503A	X	X	X
Other			
MW-507	X		
TOTALS	20	14	14

All monitoring wells were purged and sampled consistent with USEPA Region 1 low stress (low flow) purging and sampling techniques. After collection, the groundwater samples were placed on ice, logged on a chain-of-custody form and transported to Alpha Woods Hole Laboratories (Alpha) in Westborough, Massachusetts. The laboratory analytical results collected as part of the 2008 annual groundwater monitoring event are discussed below and summarized in the attached Table 1 (Inorganics) and Table 2 (VOCs). Further details, including field chemistry data, data validation, and laboratory data sheets, will be included in the next Remedy Operations semi-annual status report.

Inorganics

A summary of the laboratory analytical results for metals and cyanide collected since 2001 is provided in Table 1. For the most part, concentrations of inorganics on-site continue to be consistent with previous data, with concentrations stable and/or decreasing over time.

Cyanide, arsenic, beryllium, cadmium, chromium, copper, lead, mercury, nickel, silver and zinc were detected in at least one groundwater sample during this monitoring event. Antimony, selenium, and thallium were not detected at or above the laboratory's minimum reporting limits. Within the 14 wells



sampled for inorganics, copper continues to be the most common inorganic detected in site groundwater (10 wells), followed by cyanide (5 wells), chromium, nickel and zinc (3 wells), lead (2 wells), and arsenic, beryllium, cadmium, mercury, and silver, which were only detected in one well (within the MFA source area). Similar to previous results, the highest concentrations of metals were detected in the samples collected from MW-113, MW-601B, and RW-108A. All of these wells are located within or hydraulically downgradient of the MFA. Of note, downgradient wells MW-113 and MW-601B show a general decline in copper and zinc concentrations since 2001, as shown in the attached plots.

For general comparison purposes and given there are no uses of groundwater on the site (drinking or other uses), the recent data from wells along the property boundary were screened against the Connecticut Department of Environmental Protection (CTDEP) Remediation Standard Regulations (RSRs) surface water protection criteria (SWPCs). An exceedence of the SWPC was detected in four of the eight boundary wells and in one of the off-property wells. This is consistent with the 2007 monitoring event, with the exception of the presence of lead at MW-10 just above the laboratory detection limit and SWPC. The only other location where lead was measured above the laboratory detection limit was at MFA source area well RW-108A.

The wells with current levels above the SWPC include: MW-3 (copper), MW-10 (lead), MW-113 (copper, nickel, zinc), MW-601B (copper and zinc), and off-property well MW-15M (cyanide). No exceedences were detected in MW-2, MW-11, and MW-111 and no inorganics were detected above the reporting limits in downgradient off-property well 2ONR-MW-1A. The concentrations of copper in MW-11 and copper and zinc in MW-111 have decreased steadily over the years and remain below the CTDEP RSRs SWPCs for at least the past couple of years.

Volatile Organic Compounds

The VOC results from the groundwater samples collected in August 2008, as well as those collected since September 2001, are summarized in Table 2. The following six VOCs continued to be the most frequently detected compounds above the laboratory's minimum reporting limits: 1,1-Dichloroethane (1,1-DCA), 1,1-Dichloroethene (1,1-DCE), cis-1,2-dichloroethene (cis-1,2-DCE), Tetrachloroethene (PCE), 1,1,1-Trichloroethane (1,1,1-TCA), and Trichloroethene (TCE).

The 2008 VOC groundwater results have remained fairly consistent with previous results (within and downgradient of the former MFA) or have decreased (within and downgradient of the former Lagoon area). The highest concentrations of VOCs continue to be detected within and immediately downgradient of the MFA and adjacent to the former Lagoon area with the highest total VOC concentrations detected in source area and immediately downgradient monitoring wells MW-111 (72,600 ug/l), RW-108A (71,100 ug/l), RVW-104 (57,290 ug/l), and MW-9 (53,000 ug/l). These results are consistent with previous sampling events, with an overall decrease since monitoring began in the late 1980's.

Within and immediately downgradient of the former Lagoon Area, concentrations of VOCs in groundwater have shown a notable decline (especially MW-2, MW-3, MW-9, and MW-11) over the past few years since the upgrade of the hydraulic containment groundwater treatment system in 2005. VOC levels within and immediately downgradient of the former MFA have remained consistent with historical results and/or declined over time. Concentrations continue to fluctuate at select wells downgradient of the former MFA (MW-111, MW-112, and MW-508C); however, they are consistent within the range of previously detected historical results and are within the immediate capture zones of nearby extraction wells.

For general comparison purposes and given there are no uses of groundwater in the area (drinking or other uses), the recent data was screened against the CTDEP RSR Industrial/ Commercial (I/C)



Volatilization Criteria and SWPC. An exceedence of the CTDEP RSR I/C Volatilization Criteria was detected in 12 of the 20 wells sampled for VOCs, with exceedences of TCE (12 wells), PCE (5 wells), 1,1,1-TCA (2 wells), and 1,1-DCE (2 wells). It should be noted that concentrations of TCE declined below the I/C volatilization criteria in Lagoon area wells MW-8 and MW-10. As you are aware, construction of the sub-slab vapor control system (SSDS) is currently underway for the facility building and SSDS' have been operational at the two adjacent residences (2 Broad Street and 2 Old Newtown Road) to eliminate the vapor intrusion to indoor air pathway to potential current receptors and an environmental land use restriction will be recorded, as part of the on-property remedial action to restrict new buildings in other areas of the property with Volatilization Criteria exceedences.

An exceedence of the SWPC was detected in six of the thirteen boundary and off-property wells analyzed, a decrease in number from the previous year. The six wells with current levels above the SWPC include: MW-15M (TCE), MW-111 (TCE, PCE), MW-112 (TCE, PCE), MW-113 (PCE), MW-508C (PCE, TCE, 1,1-DCE) and MW-601B (PCE, 1,1-DCE). No exceedences were detected in MW-2, MW-3, MW-10, MW-11, MW-14, MW-508, and 2ONR-MW-1A. It should be noted that concentrations of 1,1-DCE have declined in monitoring wells MW-10 and MW-11 below the SWPC. In addition, no VOCs were detected in excess of the SWPC in the two monitoring wells installed closest to the Still River (e.g., points of compliance wells – MW-14 and 2ONR-MW-1A).

As discussed in previous submittals, the overall VOC concentrations in downgradient, off-property well MW-15M have decreased significantly since the early 1990's; however, a slight increase in total VOC levels was observed in 2005 – 2006. Concentrations stabilized in 2007 throughout early-2008 and recent data (from August 2008) demonstrates that the concentrations have declined. This is illustrated in the attached plot of total VOCs over time at this well. The increase in VOC levels at this well in 2005 - 2006 is attributable to operational issues with the treatment systems prior to the start-up of the enhanced hydraulic containment system in 2005, as well as issues in 2005 – 2006 with precipitate build-up within the treatment system (causing system shutdown) and corrosion of the well pump at RW-6 during this timeframe [causing reduced flow and shutdown of the pump for a month (in March/April 2006)]. Since the upgrade of the treatment system to prevent the precipitate build-up (August 2006) and the replacement of well pump RW-6 with one compatible with the groundwater chemistry in that area (April 2006), these issues have been addressed and the system has operated continuously and effectively. Current VOC levels in groundwater at this location have declined from the past few sampling events.

In general, VOC concentrations in groundwater have decreased significantly since monitoring began in the late 1980's/ early 1990's. In addition, notable decreases in VOC concentrations within the past few years have been observed in the vicinity and immediately downgradient of the former Lagoon Area. This is further illustrated by the reduction in the number of boundary and/or off-property monitoring wells where there have been exceedences of applicable RSR criteria. Although levels of VOCs in groundwater fluctuate within wells downgradient of the former MFA, the concentrations are consistent with those measured in the past, thereby demonstrating that conditions have not changed and remain stable. In addition, the concentrations in off-property well MW-15M have begun to decline.

Groundwater Extraction and Treatment System

On August 31, 2005, the enhanced property line hydraulic containment groundwater system initiated operations at the site. The system continuously extracts VOC impacted groundwater from six hydraulic containment recovery wells (RW-1 through RW-6), treats the groundwater, and discharges the treated groundwater to the sanitary sewer. In 2008, this system was incorporated into the selected remedial action for on-property conditions.

From August 31, 2005 to August 28, 2008, the enhanced system has been operational for a total of 2.85 years, extracted approximately 15.5 millions of gallons of groundwater, and has removed



approximately 1,325 pounds of VOCs from the subsurface. The total flow rate of the system has ranged from 6 to 18 gallons per minute (gpm) with an average flow rate (with the recovery wells cycling) of 10 gpm since August 2005.

Monitoring of the hydraulic containment system has indicated that the system continues to be operating effectively, meeting its operational goals by capturing the VOC plume and effectively treating the extracted groundwater.

Summary

Similar to years past, the results of the 2008 annual groundwater monitoring have demonstrated an overall decreasing trend of contaminant levels in groundwater across the site since monitoring began in the late 1980's/ early 1990's. In addition, notable decreases in VOC concentrations within the past few years have been observed in the vicinity and immediately downgradient of the former Lagoon Area. Although current levels of inorganics and VOCs along the downgradient property boundary remain above the CTDEP RSRs SWPC in select wells, concentrations have declined over time and the number of locations with an exceedence has decreased as well.

The overall decrease in VOC levels over time and the decrease and/or stability of contaminants over the past couple years demonstrates the effectiveness of the hydraulic containment groundwater treatment system and that migration of contaminated groundwater has stabilized and is under control.

It is also noted that, as we have discussed, additional groundwater characterization data will be collected in the area northeast of the property pending off-property access to further determine the nature and extent of any facility-related groundwater contamination in these areas. However, regardless of these results, the impacted groundwater can be considered stabilized or under control in this area, as well, given the proximity of the large wetlands area or groundwater discharge point located approximately 650 feet from the property.

Continued groundwater monitoring will be conducted to monitor and confirm the results in accordance with the OM&M Plan.

If you have any questions regarding the information provided, please contact me at 978-557-8150.

Sincerely,

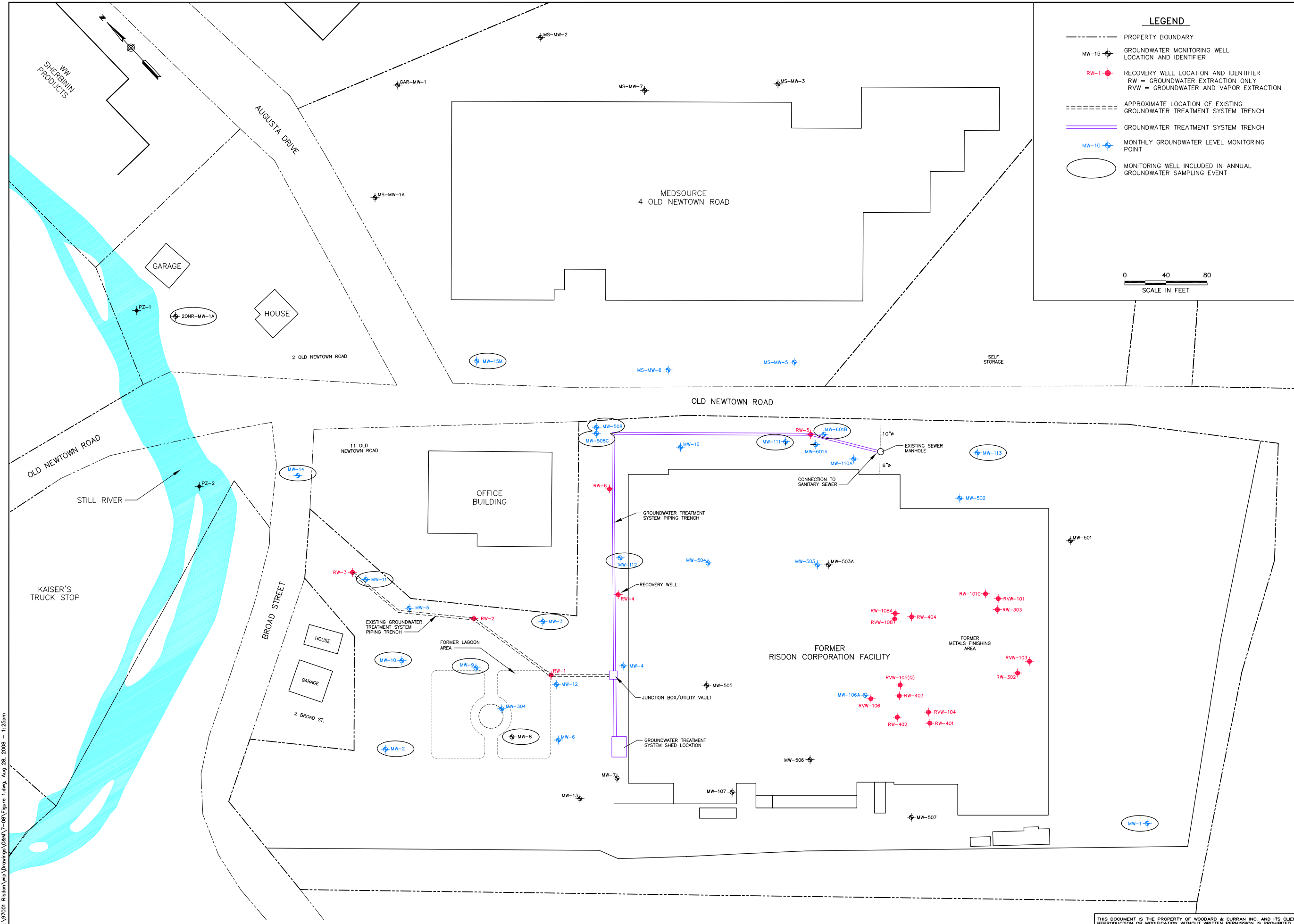
WOODARD & CURRAN INC

A handwritten signature in black ink that reads "Jeffrey A. Hamel".

Jeffrey A. Hamel, LSP, LEP
Senior Project Manager

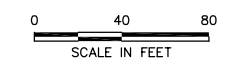
CMR
97001.25

Enclosures: Tables 1 and 2
Figure 1
Trend Plots for copper, zinc and total VOCs



LEGEND

- PROPERTY BOUNDARY
- MW-15 + GROUNDWATER MONITORING WELL LOCATION AND IDENTIFIER
- RW-1 + RECOVERY WELL LOCATION AND IDENTIFIER
RW = GROUNDWATER EXTRACTION ONLY
RWV = GROUNDWATER AND VAPOR EXTRACTION
- APPROXIMATE LOCATION OF EXISTING GROUNDWATER TREATMENT SYSTEM TRENCH
- GROUNDWATER TREATMENT SYSTEM TRENCH
- MW-10 + MONTHLY GROUNDWATER LEVEL MONITORING POINT
- MONITORING WELL INCLUDED IN ANNUAL GROUNDWATER SAMPLING EVENT



35 NEW ENGLAND BUSINESS CENTER
ANDOVER, MASSACHUSETTS 01810
866.702.6371 | www.woodardcurran.com

WOODARD & CURRAN

COMMITMENT & INTEGRITY DRIVE RESULTS

REV	DESCRIPTION	CHECKED BY:	DATE

DESIGNED BY: EVR
DRAWN BY: Figure 1.dwg

GROUNDWATER MONITORING LOCATIONS

RISDON CORPORATION
DANBURY, CONNECTICUT

OM&M PLAN

JOB NO.: 97001
DATE: AUGUST 2008
SCALE: AS NOTED
SHEET: OF

FIGURE 1

S:\07001 Risdon\wp\Drawings\OM&M\7-08\Figure 1.dwg, Aug 28, 2008 - 1:25pm

THIS DOCUMENT IS THE PROPERTY OF WOODARD & CURRAN INC. AND ITS CLIENT. REPRODUCTION OR MODIFICATION WITHOUT WRITTEN PERMISSION IS PROHIBITED.

TABLE 1
SUMMARY OF INORGANICS DETECTED IN GROUNDWATER

September 2001 - August 2008
Risdon ICM Treatment System, Danbury, Connecticut

Monitoring Wells	Sample Date	Inorganics Detected (mg/l)									
		Total Cyanide	Total Arsenic	Total Beryllium	Total Cadmium	Total Chromium	Total Copper	Total Lead	Total Nickel	Total Silver	Total Zinc
SWPC		0.052	0.004	0.004	0.006	NE	0.05	0.01	0.88	0.012	0.123
MW-1	Sep-01	<0.005	<0.004	<0.004	<0.005	<0.01	<0.01	<0.01	<0.025	<0.007	<0.05
	Jan-02	<0.005	<0.004	<0.004	<0.005	<0.01	<0.01	<0.01	<0.025	<0.007	<0.05
	Apr-02	<0.005	<0.004	<0.004	<0.005	<0.01	<0.01	<0.01	<0.025	<0.007	<0.05
	Jul-02	<0.005	<0.004	<0.004	<0.005	<0.01	<0.01	<0.01	<0.025	<0.007	<0.05
	Oct-02	<0.005	<0.004	<0.004	<0.005	<0.01	<0.01	<0.01	<0.025	<0.010	<0.05
	Sep-03	<0.005	<0.004	<0.004	<0.005	<0.01	<0.01	<0.01	<0.025	<0.007	<0.05
	Sep-04	<0.005	<0.004	<0.004	<0.005	<0.01	<0.01	<0.01	<0.025	<0.007	<0.05
	Sep-05	<0.005 UJ	<0.004	<0.004	<0.005	<0.01	0.01	<0.01	<0.025	<0.007	<0.05
	Aug-06	<0.01	<0.005	<0.004	<0.005	<0.01	<0.01	<0.01	<0.025	<0.007	<0.05
	Aug-07	<0.01	<0.005	<0.005	<0.005	<0.01	<0.01 UJ	<0.01	<0.025	<0.007	<0.05
Aug-08	<0.01	<0.005	<0.005	<0.005	<0.01	<0.01	<0.01	<0.025	<0.007	<0.05	
MW-2*	Sep-01	<0.005	<0.004	<0.004	<0.005	<0.01	0.01	<0.01	<0.025	<0.007	<0.05
	Jan-02	<0.005	<0.004	<0.004	<0.005	<0.01	0.01	<0.01	<0.025	<0.007	<0.05
	Apr-02	0.005 UJ	<0.004	<0.004	<0.005	<0.01	0.01	<0.01	<0.025	<0.007	<0.05
	Jul-02	<0.005	<0.004	<0.004	<0.005	<0.01	0.01	<0.01	<0.025	<0.010	<0.05
	Oct-02	<0.005	<0.004	<0.004	<0.005	<0.01	0.01 U	<0.01	<0.025	<0.007	<0.05
	Sep-03	<0.005	<0.004	<0.004	<0.005	<0.01	0.01	<0.01	<0.025	<0.007	<0.05
	Sep-04	<0.005	<0.004	<0.004	<0.005	<0.01	0.03	<0.01	<0.025	<0.007	<0.05
	Sep-05	<0.005 UJ	<0.004	<0.004	<0.005	<0.01	0.03	<0.01	<0.025	<0.007	<0.05
	Aug-06	<0.01	<0.005	<0.004	<0.005	<0.01	0.01	<0.01	<0.025	<0.007	<0.05
	Aug-07	<0.01	<0.005	<0.005	<0.005	<0.01	0.011	<0.01	<0.025	<0.007	<0.05
Aug-08	<0.01	<0.005	<0.005	<0.005	0.01	0.039	<0.01	<0.025	<0.007	<0.05	

TABLE 1
SUMMARY OF INORGANICS DETECTED IN GROUNDWATER

September 2001 - August 2008
Risdon ICM Treatment System, Danbury, Connecticut

Monitoring Wells	Sample Date	Inorganics Detected (mg/l)									
		Total Cyanide	Total Arsenic	Total Beryllium	Total Cadmium	Total Chromium	Total Copper	Total Lead	Total Nickel	Total Silver	Total Zinc
SWPC		0.052	0.004	0.004	0.006	NE	0.05	0.01	0.88	0.012	0.123
MW-3*	Sep-01	<0.005	<0.004	<0.004	<0.005	<0.01	0.11	<0.01	<0.025	<0.007	<0.05
	Jan-02	<0.005	<0.004	<0.004	<0.005	<0.01	0.08	<0.01	<0.025	<0.007	<0.05
	Apr-02	0.005 UJ	<0.004	<0.004	<0.005	<0.01	0.11	<0.01	<0.025	<0.010	<0.05
	Jul-02	<0.005	<0.004	<0.004	<0.005	<0.01	0.11	<0.01	<0.025	<0.007	<0.05
	Oct-02	<0.005	<0.004	<0.004	<0.005	<0.01	0.1 U	<0.01	<0.025	<0.007	<0.05
	Sep-03	<0.005	<0.004	<0.004	<0.005	<0.01	0.13	<0.01	<0.025	<0.007	<0.05
	Sep-04	<0.005	<0.004	<0.004	<0.005	<0.01	0.10	<0.01	<0.025	<0.007	<0.05
	Sep-05	<0.005 UJ	<0.004	<0.004	<0.005	<0.01	0.07	<0.01	<0.025	<0.007	<0.05
	Aug-06	<0.01	<0.005	<0.004	<0.005	<0.01	0.09	<0.01	<0.025	<0.007	<0.05
	Aug-07	<0.01	<0.005	<0.005	<0.005	<0.01	0.079	<0.01	<0.025	<0.007	<0.05
Aug-08	<0.01	<0.005	<0.005	<0.005	<0.01	0.079	<0.01	<0.025	<0.007	<0.05	
MW-8	Sep-01	<0.005	<0.004	<0.004	<0.005	<0.01	0.06	<0.01	<0.025	<0.007	<0.05
	Jan-02	NA	<0.004	NA	NA	NA	NA	<0.01	NA	<0.010	NA
	Apr-02	0.005 UJ	<0.004	<0.004	<0.005	<0.01	0.20	<0.01	<0.025	<0.007	<0.05
	Jul-02	0.007 U	<0.004	<0.004	<0.005	<0.01	0.16	<0.01	<0.025	<0.007	<0.05
	Oct-02	<0.005	<0.004	<0.004	<0.005	<0.01	0.14 U	<0.01	<0.025	<0.007	<0.05
	Sep-03	0.005 J	0.004	<0.004	<0.005	<0.01	0.22	<0.01	<0.025	<0.007	<0.05
	Sep-04	<0.005	<0.004	<0.004	<0.005	<0.01	0.14	<0.01	<0.025	<0.007	<0.05
	Sep-05	0.007 J	<0.004	<0.004	<0.005	<0.01	0.18	<0.01	<0.025	<0.007	<0.05
	Aug-06	<0.01	<0.005	<0.004	<0.005	<0.01	0.14	<0.01	<0.025	<0.007	<0.05
	Aug-07	<0.01	<0.005	<0.005	<0.005	<0.01	0.065	<0.01	<0.025	<0.007	<0.05
Aug-08	<0.01	<0.005	<0.005	<0.005	<0.01	0.141	<0.01	<0.025	<0.007	<0.05	

TABLE 1
SUMMARY OF INORGANICS DETECTED IN GROUNDWATER

September 2001 - August 2008
Risdon ICM Treatment System, Danbury, Connecticut

Monitoring Wells	Sample Date	Inorganics Detected (mg/l)									
		Total Cyanide	Total Arsenic	Total Beryllium	Total Cadmium	Total Chromium	Total Copper	Total Lead	Total Nickel	Total Silver	Total Zinc
SWPC		0.052	0.004	0.004	0.006	NE	0.05	0.01	0.88	0.012	0.123
MW-10*	Sep-01	0.038	<0.004	<0.004	<0.005	<0.01	<0.01	<0.01	<0.025	<0.010	<0.05
	Jan-02	0.01	<0.004	<0.004	<0.005	0.01	0.01	<0.01	<0.025	<0.007	<0.05
	Apr-02	0.005 UJ	<0.004	<0.004	<0.005	0.02	0.02	<0.01	<0.025	<0.007	<0.05
	Jul-02	0.01 U	<0.004	<0.004	<0.005	<0.01	<0.01	<0.01	<0.025	<0.007	<0.05
	Oct-02	<0.005	<0.004	<0.004	<0.005	<0.01	<0.01	<0.01	<0.025	<0.007	<0.05
	Sep-03	0.009(J)	<0.004	<0.004	<0.005	<0.01	<0.01	<0.01	<0.025	<0.007	<0.05
	Sep-04	0.012	<0.004	<0.004	<0.005	<0.01	0.02	<0.01	<0.025	<0.010	<0.05
	Sep-05	0.01 J	<0.004	<0.004	<0.005	0.02	0.05	<0.01	<0.025	<0.007	<0.05
	Aug-06	<0.01	<0.005	<0.004	<0.005	<0.01	0.01	<0.01	<0.025	<0.007	<0.05
	Aug-07	<0.01	<0.005	<0.005	<0.005	<0.01	<0.01	<0.01	<0.025	<0.007	<0.05
Aug-08	<0.01	<0.005	<0.005	<0.005	<0.005	0.02	0.046	0.012	<0.025	<0.007	<0.05
MW-11*	Sep-01	0.01	<0.004	<0.004	<0.005	<0.01	0.12	<0.01	<0.025	<0.007	<0.05
	Jan-02	<0.005	<0.004	<0.004	<0.005	<0.01	0.16	<0.01	<0.025	<0.007	<0.05
	Apr-02	0.005 UJ	<0.004	<0.004	<0.005	<0.01	0.02	<0.01	<0.025	<0.007	<0.05
	Jul-02	<0.005	<0.004	<0.004	<0.005	<0.01	0.12	<0.01	<0.025	<0.007	<0.05
	Oct-02	0.007	<0.004	<0.004	<0.005	<0.01	0.14 U	<0.01	<0.025	<0.010	<0.05
	Sep-03	<0.005	<0.004	<0.004	<0.005	<0.01	0.11	<0.01	<0.025	0.008	<0.05
	Sep-04	<0.005	<0.004	<0.004	<0.005	<0.01	0.08	<0.01	<0.025	<0.007	<0.05
	Sep-05	0.005 J	<0.004	<0.004	<0.005	<0.01	0.06	<0.01	<0.025	<0.007	<0.05
	Aug-06	<0.01	<0.005	<0.004	<0.005	<0.01	0.09	<0.01	<0.025	<0.007	<0.05
	Aug-07	<0.01	<0.005	<0.005	<0.005	<0.01	0.03	<0.01	<0.025	<0.007	<0.05
Aug-08	<0.01	<0.005	<0.005	<0.005	<0.01	0.039	<0.01	<0.025	<0.007	<0.05	

TABLE 1
SUMMARY OF INORGANICS DETECTED IN GROUNDWATER

September 2001 - August 2008
Risdon ICM Treatment System, Danbury, Connecticut

Monitoring Wells	Sample Date	Inorganics Detected (mg/l)									
		Total Cyanide	Total Arsenic	Total Beryllium	Total Cadmium	Total Chromium	Total Copper	Total Lead	Total Nickel	Total Silver	Total Zinc
SWPC		0.052	0.004	0.004	0.006	NE	0.05	0.01	0.88	0.012	0.123
MW-15M*	Sep-01	0.191	<0.004	<0.004	<0.005	<0.01	<0.01	<0.01	<0.025	<0.007	<0.05
	Jan-02	0.184	<0.004	<0.004	<0.005	<0.01	<0.01	<0.01	<0.025	<0.007	<0.05
	Apr-02	0.186	<0.004	<0.004	<0.005	<0.01	<0.01	<0.01	<0.025	<0.007	<0.05
	Jul-02	0.186	<0.004	<0.004	<0.005	<0.01	<0.01	<0.01	<0.025	<0.007	<0.05
	Oct-02	0.132	<0.004	<0.004	<0.005	<0.01	<0.01	<0.01	<0.025	<0.010	<0.05
	Sep-03	0.139 J	<0.004	<0.004	<0.005	<0.01	<0.01	<0.01	<0.025	<0.007	<0.05
	Sep-04	0.161	<0.004	<0.004	<0.005	<0.01	<0.01	<0.01	<0.025	<0.007	<0.05
	Sep-05	0.222 J	<0.004	<0.004	<0.005	<0.01	<0.01	<0.01	<0.025	<0.007	<0.05
	Aug-06	0.163	<0.005	<0.005	<0.005	<0.01	0.01	<0.01	<0.025	<0.007	<0.05
	Aug-07	0.159	<0.005	<0.005	<0.005	<0.01	<0.01 UJ	<0.01	<0.025	<0.007	<0.05
Aug-08	0.159	<0.005	<0.005	<0.005	<0.01	<0.01	<0.01	<0.025	<0.007	<0.05	
MW-111*	Sep-01	0.009	<0.004	<0.004	<0.005	<0.01	1.30	<0.01	0.109	<0.007	0.7
	Jan-02	<0.005	<0.004	<0.004	<0.005	<0.01	1.30	<0.01	0.106	<0.007	0.66
	Apr-02	<0.005	<0.004	<0.004	<0.005	<0.01	1.30	<0.01	0.128	<0.007	0.72
	Jul-02	0.008 U	<0.004	<0.004	<0.005	<0.01	0.87	<0.01	0.102	<0.007	0.56
	Oct-02	0.006	<0.004	<0.004	<0.005	<0.01	1.40	<0.01	0.114	<0.010	0.72
	Sep-03	0.008 J	<0.004	<0.004	<0.005	<0.01	0.16	<0.01	0.035	<0.007	0.19
	Sep-04	0.023	<0.004	<0.004	<0.005	<0.01	0.05	<0.01	<0.025	<0.007	0.06
	Sep-05	0.011J	<0.004	<0.004	<0.005	<0.01	0.02	<0.01	<0.025	<0.007	<0.05
	Aug-06	0.012	<0.005	<0.004	<0.005	<0.01	0.02	<0.01	<0.025	<0.007	<0.05
	Aug-07	<0.01	<0.005	<0.005	<0.005	<0.01	<0.01 UJ	<0.01	<0.025	<0.007	<0.05
Aug-08	0.012	<0.005	<0.005	<0.005	<0.01	<0.01	<0.01	<0.025	<0.007	<0.05	

TABLE 1
SUMMARY OF INORGANICS DETECTED IN GROUNDWATER

September 2001 - August 2008
Risdon ICM Treatment System, Danbury, Connecticut

Monitoring Wells	Sample Date	Inorganics Detected (mg/l)									
		Total Cyanide	Total Arsenic	Total Beryllium	Total Cadmium	Total Chromium	Total Copper	Total Lead	Total Nickel	Total Silver	Total Zinc
SWPC		0.052	0.004	0.004	0.006	NE	0.05	0.01	0.88	0.012	0.123
MW-113*	Sep-01	0.021	<0.004	0.005	<0.005	<0.01	6.50	<0.01	2.02	<0.007	1.7
	Jan-02	<0.005	<0.004	0.006	<0.005	<0.01	7.20	<0.01	2.06	<0.007	2.0
	Apr-02	0.017 J	<0.004	0.005	<0.005	<0.01	8.20	<0.01	2.52	0.012	2.3
	Jul-02	0.013 U	<0.004	0.008	<0.005	<0.01	10.00	<0.01	2.67	0.022	2.7
	Oct-02	0.011	<0.004	0.008	<0.005	<0.01	8.20	<0.01	2.14	0.018	2.3
	Sep-03	0.039 J	<0.004	0.005	<0.005	<0.01	5.50	<0.01	1.84	<0.007	1.4
	Sep-04	0.096	<0.004	0.005	<0.005	<0.01	6.00	<0.01	1.96	<0.007	1.4
	Sep-05	0.115 J	<0.004	<0.005	<0.005	<0.01	5.60	<0.01	1.98	<0.007	1.3
	Aug-06	0.08	0.007	<0.004	<0.005	0.03	7.40	0.06	2.18	<0.007	1.4
	Aug-07	0.025	<0.005	<0.005	<0.005	<0.01	3.12 J	<0.01	1.84	<0.007	0.979
Aug-08	<0.01	<0.005	<0.005	<0.005	<0.01	1.81	<0.01	1.59	<0.007	0.766	
MW-503A	Aug-07	<0.01	<0.005	<0.005	<0.005	<0.01	0.036	<0.01	<0.025	<0.007	<0.05
	Aug-08	<0.01	<0.005	<0.005	<0.005	<0.01	0.025	<0.01	<0.025	<0.007	<0.05
MW-504	Aug-06	<0.01	<0.005	<0.004	<0.005	<0.01	<0.01	<0.01	<0.025	<0.007	<0.05
MW-601B*	Sep-01	0.015	<0.004	0.007	0.005	<0.01	8.00	<0.01	0.434	<0.007	4.0
	Jan-02	<0.005	<0.004	0.006	0.005	<0.01	6.70	<0.01	0.355	<0.007	3.4
	Apr-02	0.015 J	0.004	0.005	<0.005	<0.01	6.40	<0.01	0.347	<0.007	3.1
	Jul-02	0.016 U	<0.004	0.006	<0.005	<0.01	5.80	<0.01	0.334	<0.007	2.9
	Oct-02	0.014	<0.004	0.006	<0.005	<0.01	5.80	<0.01	0.342	<0.010	3.1
	Sep-03	0.018 J	<0.004	0.006	0.005	<0.01	5.50	<0.01	0.385	<0.010	3.3
	Sep-04	0.038	<0.004	0.007	<0.005	<0.01	6.10	<0.01	0.460	<0.010	3.4
	Sep-05	0.021 J	0.011	0.011	0.005	<0.01	9.80	<0.01	1.130	<0.007	4.2
	Aug-06	<0.01	<0.005	0.007	<0.005	<0.01	6.10	<0.01	0.796	<0.007	2.8
	Aug-07	0.031	<0.005	<0.005	<0.005	<0.01	4.10 J	<0.01	0.633	<0.007	2.05
Aug-08	0.025	<0.005	<0.005	<0.005	<0.01	3.82	<0.01	0.568	<0.007	1.84	

TABLE 1
SUMMARY OF INORGANICS DETECTED IN GROUNDWATER

September 2001 - August 2008
Risdon ICM Treatment System, Danbury, Connecticut

Monitoring Wells	Sample Date	Inorganics Detected (mg/l)									
		Total Cyanide	Total Arsenic	Total Beryllium	Total Cadmium	Total Chromium	Total Copper	Total Lead	Total Nickel	Total Silver	Total Zinc
SWPC		0.052	0.004	0.004	0.006	NE	0.05	0.01	0.88	0.012	0.123
RVW-104 **	Aug-06	0.023	<0.005	<0.004	<0.005	0.01	0.04	<0.01	<0.025	<0.007	<0.05
	Aug-07	0.18	<0.005	<0.005	<0.005	0.02	0.494	<0.01	<0.025	0.013	0.054
	Aug-08	0.065	<0.005	<0.005	<0.005	0.01	0.063	<0.01	<0.025	<0.007	<0.05
RW-108A	Aug-06	0.062	0.013	0.026	0.005	0.02	27.0	0.09	0.09	0.049	12
	Aug-07	0.039	0.011	0.027	0.005	0.01	23.9	0.05	1.44	<0.007	13.9
	Aug-08	0.1 J	0.011	0.025	0.006	<0.01	18.9	0.044	1.61	0.014	6.25
20NR-MW1A*	Feb-06	--	<0.005	<0.005	<0.005	<0.01	<0.01	<0.01	<0.025	<0.007	<0.05
	Aug-07	<0.01	<0.005	<0.005	<0.005	<0.01	<0.01 UJ	<0.01	<0.025	<0.007	<0.05
	Aug-08	<0.01	<0.005	<0.005	<0.005	<0.01	<0.01	<0.01	<0.025	<0.007	<0.05

Notes/Abbreviations:

Bold value indicates a detection at or above the laboratory's reported detection limit.

Shaded cells indicate reported concentration within a downgradient property boundary well or off-property well is above the SWPC.

* indicates well is located along downgradient property boundary or off-property

** Mercury was detected in this well on three occasions, January 2002 at 0.0018 mg/l, August 2007 at 0.0025 mg/l and August 2008 at 0.0002 mg/l.

mg/l = milligrams per liter

SWPC = CTDEP Remediation Standard Regulations (RSRs) Surface Water Protection Criteria

NE = None established by CTDEP; SWPC for trivalent chromium is 1.2 mg/l ; SWPC for hexavalent chromium is 0.110 mg/l.

NA = Not Analyzed; monitoring well MW-08 was not accessible for sampling during the January 2002 event.

J = Results qualified as estimated values

UJ = Results qualified as estimated values due to failed recoveries in MSD sample.

U = Result qualified as undetected because of equipment blank contamination.

TABLE 2: SUMMARY OF VOLATILE ORGANIC COMPOUNDS DETECTED IN GROUNDWATER

September 2001 - August 2008
 Hydraulic Containment Groundwater Treatment System
 Risdon - Danbury, Connecticut

Monitoring Wells	Sample Date	VOCs Detected (ug/l)						
		1,1-Dichloroethane	1,1-Dichloroethene	cis-1,2-Dichloroethene	Tetrachloroethene	1,1,1-Trichloroethane	Trichloroethene	Total VOCs
SWPC	-	NE	96	NE	88	62,000	2,340	NE
Vol-I/C	-	41,000	920	11,000	810	16,000	67	NE
MW-1	9/21/01	<0.5	<0.5	<0.5	<0.5	1.1	1.4	3.34
	10/15/02	<0.5	<0.5	<0.5	<0.5	1.9	3.2	5.10
	9/10/03	<0.50	<0.5	<0.5	<0.5	0.5	1.7	7.33
	9/15/04	<0.75	<0.5	<0.5	<0.5	0.5	1.1	1.60
	9/28/05	<0.75	<0.5	<0.5	<0.5	0.85	1.0	2.71
	8/1/06	<3	<2	<2	310	<2	52	365.3
	11/13/06	<0.75	<0.5	<0.5	<0.5	<0.5	0.97	9.6
	8/8/07	<0.75	<0.5	<0.5	<0.5	<0.5	0.82	1.8
	8/12/08	<0.75	<0.5	<0.5	<0.5	<0.5	<0.5	ND
MW-2*	9/19/01	1.1	<0.5	<0.5	<0.5	26.0	<0.5	27.1
	10/15/02	<0.5	<0.5	<0.5	<0.5	1.2	1.1	2.3
	9/9/03	3.1	5.6	<0.5	<0.5	710	3.4	722.1
	9/15/04	17	14	<10	<10	880	<10	911
	9/28/05	20	32	<10	<10	4,100	15	4,167
	8/2/06	7.6	0.78	<0.5	1.2	56	28	130
	8/7/07	2.5	<0.5	<0.5	0.64	9.7	<0.5	13
	8/12/08	<0.75	<0.5	<0.5	<0.5	4.8	<0.5	4.8
MW-3*	9/19/01	<100	320	170	<100	1,200	13,000	14,690
	10/15/02	<50	170	140	<50	900	15,000	16,210
	9/9/03	<200	<200	<200	<200	5,200	860	6,060
	9/15/04	<75	110	220	<50	470	2,900	3,700
	9/28/05	<75	200	160	<50	3,000	8,200	11,560
	8/3/06	<38	49	440	<25	710	3,000	4,199
	8/7/07	6.1	33	180	2.6	290	930	1,442
	8/14/08	<19	56	80	<12	76	1,300	1,512

TABLE 2: SUMMARY OF VOLATILE ORGANIC COMPOUNDS DETECTED IN GROUNDWATER

September 2001 - August 2008
 Hydraulic Containment Groundwater Treatment System
 Risdon - Danbury, Connecticut

Monitoring Wells	Sample Date	VOCs Detected (ug/l)						
		1,1-Dichloroethane	1,1-Dichloroethene	cis-1,2-Dichloroethene	Tetrachloroethene	1,1,1-Trichloroethane	Trichloroethene	Total VOCs
SWPC	-	NE	96	NE	88	62,000	2,340	NE
Vol-I/C	-	41,000	920	11,000	810	16,000	67	NE
MW-6	9/19/01	<200	<200	<200	<200	21,000	750	21,750
	8/7/07	<300	<200	<200	<200	13,000	490	13,490
MW-7	8/7/07	<0.75	<0.5	<0.5	<0.5	<0.5	1	1
MW-8	9/19/01	<100	<100	<100	<100	9,800	170	9,970
	8/7/07	<75	90	<50	<50	6,500	89	6,679
	8/12/08	<38	120	<25	<25	5,000	53	5,173
MW-9	9/19/01	<1000	17,000	<1,000	<1,000	58,000	4,500	79,500
	9/9/03	<1000	12,000	<1,000	<1,000	32,000	11,000	55,000
	9/15/04	120 J	1,900	50 J	7.4 J	21,000	2,200	25,277
	9/28/05	530	28,000	<250	<250	65,000	7,900	101,430
	8/3/06	<1,500	25,000	<1,000	<1,000	55,000	7,900	87,900
	8/7/07	<750	23,000	<500	<500	50,000	7,400	80,400
	8/12/08	<750	14,000	<500	<500	37,000	2,000	53,000
MW-10* ¹	9/19/01	12	300	<10	<10	960	180	1,452
	10/15/02	0.84	10	<0.5	<0.5	17	6.6	34
	9/9/03	14	120	2	<0.5	290	56	482
	9/15/04	14	100	<5	<5	450	46	610
	9/27/05	3.6	62	<1.2	<1.2	120	33	219
	8/2/06	19	160	2.7	<1.2	440	76	698
	8/7/07	12	320	<5	<5	440	170	942
	8/12/08	<0.75	0.77	<0.5	<0.5	1.8	<0.5	10.1

TABLE 2: SUMMARY OF VOLATILE ORGANIC COMPOUNDS DETECTED IN GROUNDWATER

September 2001 - August 2008
 Hydraulic Containment Groundwater Treatment System
 Risdon - Danbury, Connecticut

Monitoring Wells	Sample Date	VOCs Detected (ug/l)						
		1,1-Dichloroethane	1,1-Dichloroethene	cis-1,2-Dichloroethene	Tetrachloroethene	1,1,1-Trichloroethane	Trichloroethene	Total VOCs
SWPC	-	NE	96	NE	88	62,000	2,340	NE
Vol-I/C	-	41,000	920	11,000	810	16,000	67	NE
MW-11*	9/19/01	84	370	340	<20	1,100	1,900	3,794
	10/15/02	40	340	250	<25	910	1,800	3,340
	9/9/03	<25	37	150	<25	280	2,400	2,867
	9/15/04	<30	25	25	<20	980	300	1,330
	9/27/05	25	210	40	<12	6,100	560	6,935
	8/2/06	100	1,100	220	<50	3,700	2,400	7,609
	8/7/07	22	190	78	<10	790	610	1,690
	8/12/08	3.8	26	15	<1	120	94	259
MW-12	9/19/01	<200	460	<200	<200	26,000	1,400	27,860
	8/7/07	<150	140	<100	<100	9,200	550	9,890
MW-13	9/19/01	<0.5	<0.5	<0.5	<0.5	<0.5	<0.5	ND
MW-14*	9/21/01	3.5	<0.50	4.9	<0.5	10.0	11.0	30.29
	10/16/02	2.1	<0.5	2.5	<0.5	9.7	7.9	24
	9/11/03	3.7	<0.5	2.5	<0.5	11.0	7.2	35.1
	9/15/04	11	3.9	31	<1.0	70.0	73	188.9
	9/28/05	27	21	36	<1	550	140 J	774
	8/2/06	18	14	17	<2.5	340 J	80 J	469
	8/7/07	13	8.5	16	3	130	56	227
	8/13/08	11	6.4	12	<1	91	43	163

TABLE 2: SUMMARY OF VOLATILE ORGANIC COMPOUNDS DETECTED IN GROUNDWATER

September 2001 - August 2008
 Hydraulic Containment Groundwater Treatment System
 Risdon - Danbury, Connecticut

Monitoring Wells	Sample Date	VOCs Detected (ug/l)						
		1,1-Dichloroethane	1,1-Dichloroethene	cis-1,2-Dichloroethene	Tetrachloroethene	1,1,1-Trichloroethane	Trichloroethene	Total VOCs
SWPC	-	NE	96	NE	88	62,000	2,340	NE
Vol-I/C	-	41,000	920	11,000	810	16,000	67	NE
MW-15M*	9/19/01	<20	20	74	<20	60	1,300	1,454
	10/17/02	<12	<12	47	<12	32	1,200	1,279
	9/11/03	<12	<12	37	<12	24	850	911
	9/15/04	<15	<10	31	<10	20	670	721
	9/28/05	<75	<50	110	<50	81	3,300	3,491
	8/2/06	18	49	160	35	110	4,600	4,972
	8/8/07	<75	<50	190	<50	97	4,800	5,087
	5/16/08	<75	52	190	<50	100	5,200	5,542
	8/13/08	<38	48	150	31	77	4,000	4,306
MW-110A	9/20/01	<2	76	12	320	220	120	748
MW-111*	9/20/01	<1,000	<1,000	<1,000	1,900 J	2,800	60,000	64,700
	10/17/02	<200	<200	<200	920	870	25,000	26,790
	9/10/03	<500	<500	<500	1,100	2,200	67,000	70,300
	9/15/04	<1,500	<1,000	<1,000	1,200	2,500	77,000	80,700
	9/28/05	<750	<500	<500	1,000	1,000	33,000	35,000
	8/2/06	<750	<500	<500	1,100	1,900	58,000	61,000
	8/8/07	<750	<500	<500	1,000	1,000	36,000	38,000
	8/13/08	<750	<750	<500	1,600	2,000	69,000	72,600

TABLE 2: SUMMARY OF VOLATILE ORGANIC COMPOUNDS DETECTED IN GROUNDWATER

September 2001 - August 2008
 Hydraulic Containment Groundwater Treatment System
 Risdon - Danbury, Connecticut

Monitoring Wells	Sample Date	VOCs Detected (ug/l)						
		1,1-Dichloroethane	1,1-Dichloroethene	cis-1,2-Dichloroethene	Tetrachloroethene	1,1,1-Trichloroethane	Trichloroethene	Total VOCs
SWPC	-	NE	96	NE	88	62,000	2,340	NE
Vol-I/C	-	41,000	920	11,000	810	16,000	67	NE
MW-112*	9/20/01	<500	<500	740	<500	<500	26,000	26,740
	10/17/02	<250	<250	280	<250	<250	14,000	14,280
	9/10/03	<200	<200	280	<200	550 J	23,000	23,830
	9/15/04	<300	<200	610	<200	500	20,000	21,110
	9/28/05	<3	<2	8.8	<2	3.4	130	142
	8/2/06	55 J	110 J	1,600	180 J	530	23,000	25,532
	8/8/07	<150	<100	700	<100	<100	6,100 J	6,800
	8/13/08	<380	<250	2,300	350	810	39,000	42,460
MW-113*	9/20/01	<10	<10	<10	620	<10	36	656
	8/14/08	<1.9	<1.2	4.6	160	5.5	11	181
MW-304	9/19/01	<1,000	2,400	<1,000	<1,000	56,000	<1,000	58,400
MW-501	9/21/01	<0.5	<0.5	<0.5	<0.5	<0.5	3.5	3.5
MW-503A ¹	9/20/01	<5	23	10	140	140	190	503
	8/6/07	<3	14	10	650	26	240	958
	8/14/08	<19	19	15	730	43	300	1,107
MW-504	8/1/06	<300	<200	2,800	<200	<200	13,000	15,800
MW-505	9/21/01	8	72	16	<5	250	390	736
MW-506	9/20/01	<10	120	<10	<10	230	790	1,140
MW-507	9/21/01	1.6	<0.5	<0.5	<0.5	4.8	0.91	7.31
	8/14/08	<0.75	<0.5	<0.5	<0.5	<0.5	<0.5	ND

TABLE 2: SUMMARY OF VOLATILE ORGANIC COMPOUNDS DETECTED IN GROUNDWATER

September 2001 - August 2008
 Hydraulic Containment Groundwater Treatment System
 Risdon - Danbury, Connecticut

Monitoring Wells	Sample Date	VOCs Detected (ug/l)						
		1,1-Dichloroethane	1,1-Dichloroethene	cis-1,2-Dichloroethene	Tetrachloroethene	1,1,1-Trichloroethane	Trichloroethene	Total VOCs
SWPC	-	NE	96	NE	88	62,000	2,340	NE
Vol-I/C	-	41,000	920	11,000	810	16,000	67	NE
MW-508*	9/20/01	<50	<50	52	<50	<50	2,000	2,052
	10/17/02	<10	<10	21	<10	19	970	1,010
	9/10/03	<100	<100	480	<100	170	8,800	9,450
	9/15/04	<150	<100	210	<100	300	10,000	10,510
	8/2/06	<15	<10	44	11	21	960	1,036
	8/8/07	<3.8	<2.5	21	4.3	11	280	316
	8/13/08	5.2	<2	26	2.6	5.5	160	199
MW-508C*	9/20/01	<500	820	620	<500	660	23,000	25,100
	10/17/02	<1,000	<1,000	<1,000	<1,000	<1,000	34,000	34,000
	9/10/03	<500	890	540	510	590	37,000	39,530
	9/15/04	<750	580	560	<500	700	32,000	33,840
	9/28/05	<750	600	<500	<500	520	26,000	27,120
	8/2/06	<380	480	420	440	<250	18,000	19,340
	8/8/07	<380	350	430	470	<250	17,000	18,250
8/13/08	<300	630	980	910	450	36,000	38,970	
MW-601B*	9/20/01	<25	380	60	1,000	1,100	3,100	5,640
	10/17/02	<50	330	<50	850	1,200	3,000	5,380
	9/10/03	<50	410	<50	780	1,100	2,800	5,090
	9/15/04	<38	540	39	890	1,600	2,300	5,369
	9/28/05	<38	920	29	1,600	4,600	3,400	10,549
	8/2/06	<38	680	42	860	2,800	2,600	6,982
	8/8/07	<38	280	43	1,100	850	1,100	3,373
8/13/08	<38	480	64	1,200	1,400	2,200	5,344	

TABLE 2: SUMMARY OF VOLATILE ORGANIC COMPOUNDS DETECTED IN GROUNDWATER

September 2001 - August 2008
 Hydraulic Containment Groundwater Treatment System
 Risdon - Danbury, Connecticut

Monitoring Wells	Sample Date	VOCs Detected (ug/l)						
		1,1-Dichloroethane	1,1-Dichloroethene	cis-1,2-Dichloroethene	Tetrachloroethene	1,1,1-Trichloroethane	Trichloroethene	Total VOCs
SWPC	-	NE	96	NE	88	62,000	2,340	NE
Vol-I/C	-	41,000	920	11,000	810	16,000	67	NE
RVW-104 ¹	1/3/02	<500	<500	<500	27,000	1,800	8,500	37,300
	8/1/06	<380	<250	<250	34,000	<250	7,300	41,300
	8/6/07	<750	<500	<500	45,000	<500	6,800	51,800
	8/14/08	<150	590	840	45,000	340	10,000 J	57,290
RW-108A	1/3/02	<1,000	8,600	<1,000	8,100	61,000	46,000	123,700
	8/1/06	<750	3,700	<500	850	33,000	21,000	58,550
	8/6/07	<750	8,300	<500	2,500	42,000	33,000	85,800
	8/14/08	<750	8,700	<500	6,400	30,000	26,000	71,100
20NR-MW1A*	2/10/06	<0.75	<0.5	<0.5	<0.5	<0.5	<0.5	ND
	8/8/07	<0.75	<0.5	<0.5	<0.5	<0.5	<0.5	ND
	8/13/08	<0.75	<0.5	0.55	<0.5	<0.5	1.8	2.4

Notes/Abbreviations:

* indicates well is located along downgradient property boundary or off-property

¹ 1,1,2-Trichloro, 1,2,2-Trifluoroethane was detected on two occasions, in August 2008 at MW-503A at 18 ug/l and at RVW-104 at 520 ug/l. Acetone was detected in MW-10 at a concentration of 7.5 ug/l in August 2008.

ug/l = micrograms per liter (parts per billion)

J = estimated

SWPC = CTDEP Remediation Standard Regulations (RSRs) Surface Water Protection Criteria

Vol-I/C = CTDEP Remediation Standard Regulations (RSRs) Volatilization Criteria Industrial/Commercial (I/C) - Proposed Revisions March 2003

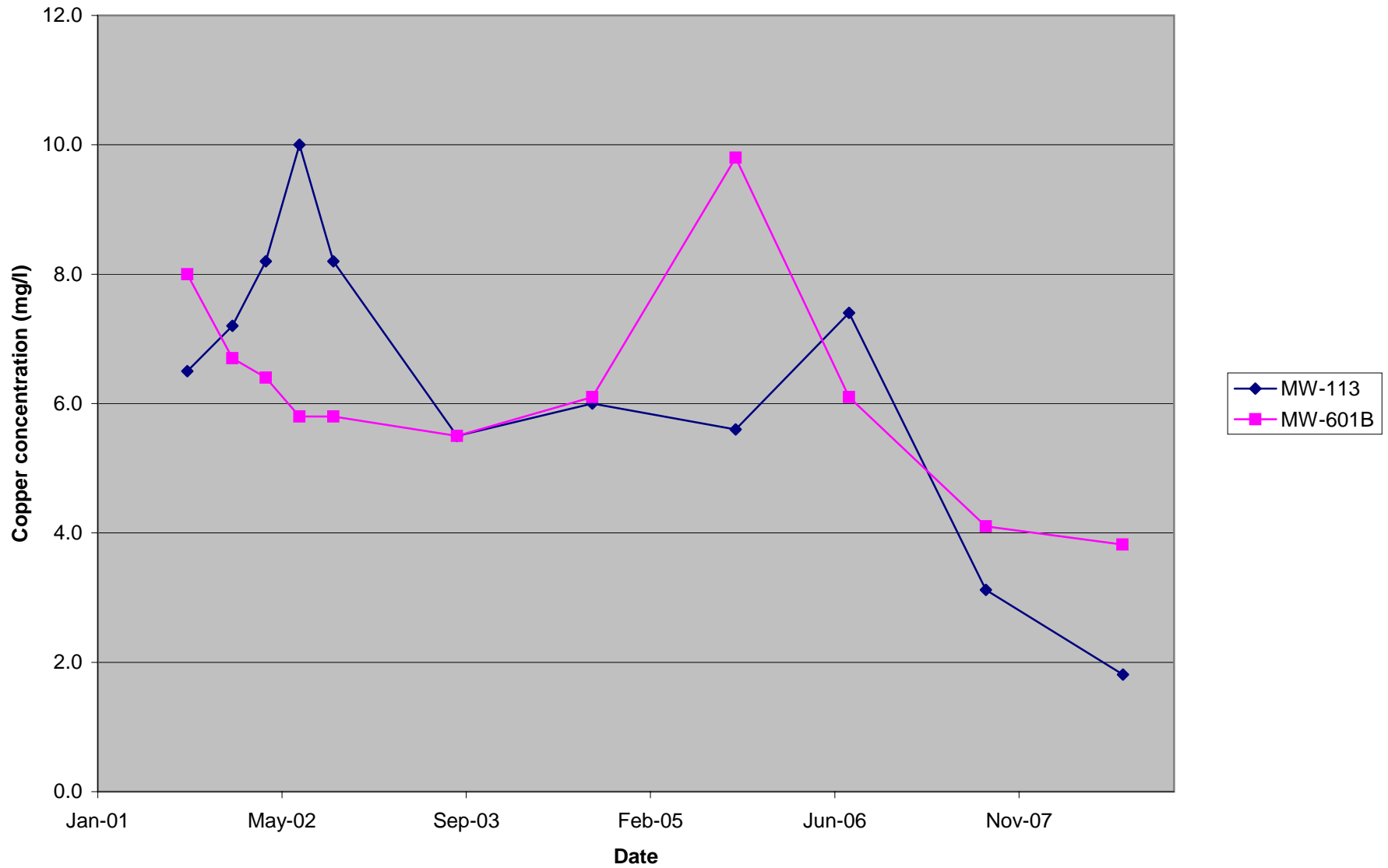
Shaded cells indicate reported concentrations area greater than an RSR criteria (SWPC for downgradient property boundary wells and off-property wells only).

NE = No standard has been established for this particular compound in the CTDEP RSRs

NS = Not sampled; MW-9 was inaccessible during the October 2002 monitoring period.

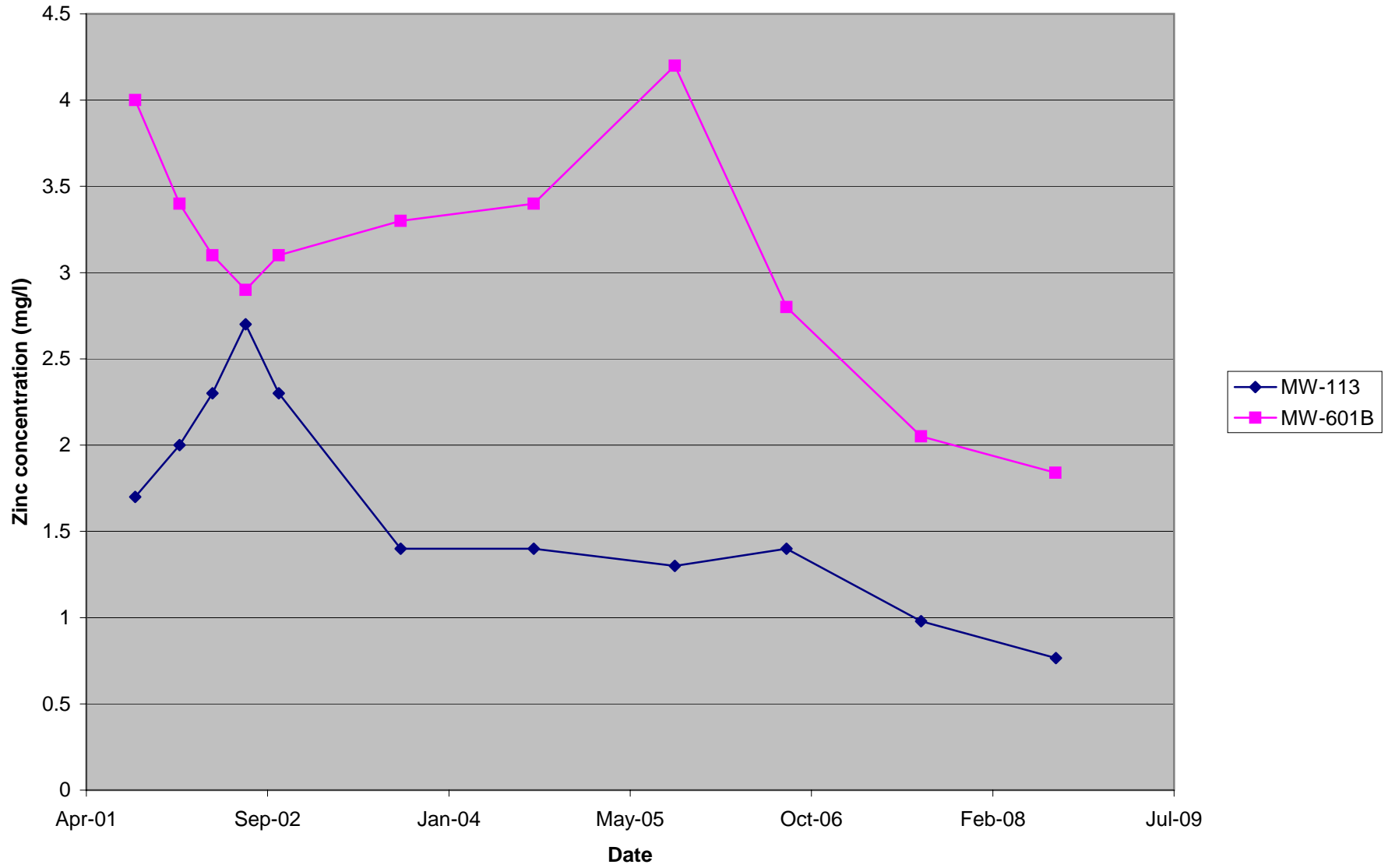
CONCENTRATIONS OF COPPER IN GROUNDWATER

Former Risdon Facility, 15 Old Newtown Road, Danbury, CT



CONCENTRATION OF ZINC IN GROUNDWATER

Former Risdon Facility, 15 Old Newtown Road, Danbury, CT



CONCENTRATIONS OF TOTAL VOCs IN MW-15M

Former Risdon Facility, 15 Old Newtown Road, Danbury, CT

