



CITY OF KEENE & Biodiesel

It all started five years ago with a small grant for the State of NH to offset the cost of B-20 biodiesel.

Since then the City has used over 200,000 gallons of B-20.

BIODIESEL B-20 - THE REASONS:

- ⇒ RUNS IN EXISTING, UNMODIFIED DIESEL ENGINES
- ⇒ INTEGRATES WITH EXISTING FUELING INFRASTRUCTURE
- ⇒ INCREASES LUBRICITY
- ⇒ CUTS EXHAUST EMISSIONS, ELIMINATES BLACK SMOKE AND ODOR – Just ask my mechanics!
- ⇒ HIGHER FLASHPOINT THAN PETROLEUM DIESEL
- ⇒ BIODEGRADABLE
- ⇒ RENEWABLE SOURCE OF ENERGY
- ⇒ LOW-RISK SIMPLE TO PHASE IN AND OUT OF USE

BIODIESEL IN KEENE- the facts

- ⇒ Total diesel fleet using B-20.
 - ⇒ 68 vehicles and equipment.
 - ⇒ No problems have been reported.
 - ⇒ 200,000 gallons for the City have been burned since July 1,2002.
 - ⇒ This Equipment includes the Highway Department, Parks and Recreation and Emergency services.
- ⇒ One of the many pieces of equipment burning Biodiesel



Biodiesel- Keene NH

- ⇒ As well as :
- ⇒ The City of Keene's ladder truck
- ⇒ It is busy keeping Keene safe.
- ⇒ It uses B-20 and is very dependable! (except when being serviced as seen here)



Biodiesel -Keene NH

And:

- ⇒ John Deere 644H Wheel loader.
- ⇒ It moves a lot of salt and loads trucks and when it is not in the yard it is plowing parking lots!



Biodiesel – Keene NH

AND:

35,000 GVW chassis with a hook lift – It plows , it salts and it hauls dirt and pushes snow ! And even our new 2006 Freightliners are using it!



B-20 and its fuel characteristics

- ⇒ No loss of power
- ⇒ Increase in fuel mileage reports of 1 to 2 additional miles per gallon running B- 20
- ⇒ With proper fuel additive no problems with gelling reported.
- ⇒ Warranties are not voided despite all the rumors
- ⇒ Manufacturers warranty their parts and workmanship - not FUEL!

Who else uses B-20 ?

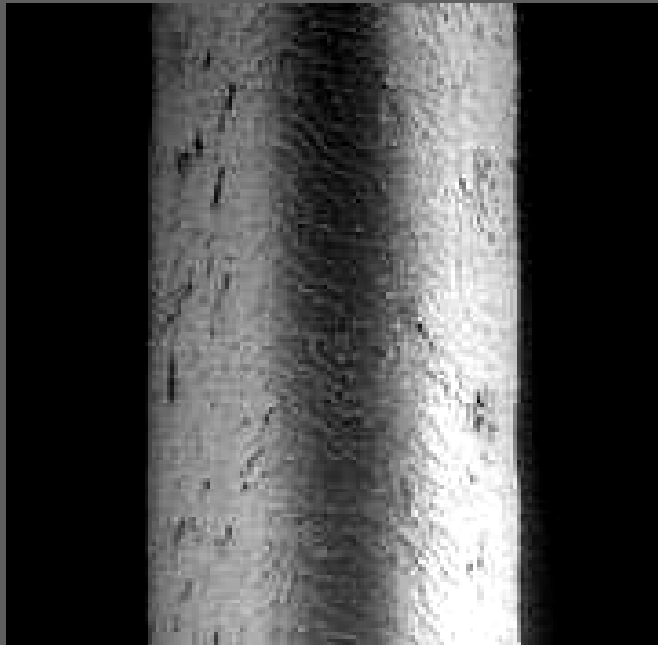
- ⇒ PORT AUTHORITY OF NY/NJ Uses Biodiesel at LaGuardia airport , Newark Airport and JFK for all diesel operations.
- ⇒ Keene State College, Harvard University, Bangor, Maine and the City Express bus system in Keene, NH

Health benefits

- ➔ Operators have stated that the headaches they would get from operating equipment with 100% diesel have gone away while operating equipment with B-20. In an air quality study done at the Keene transfer station the PM2.5 particulate matter was reduced by over 60% !
- ➔ Let's hear more.

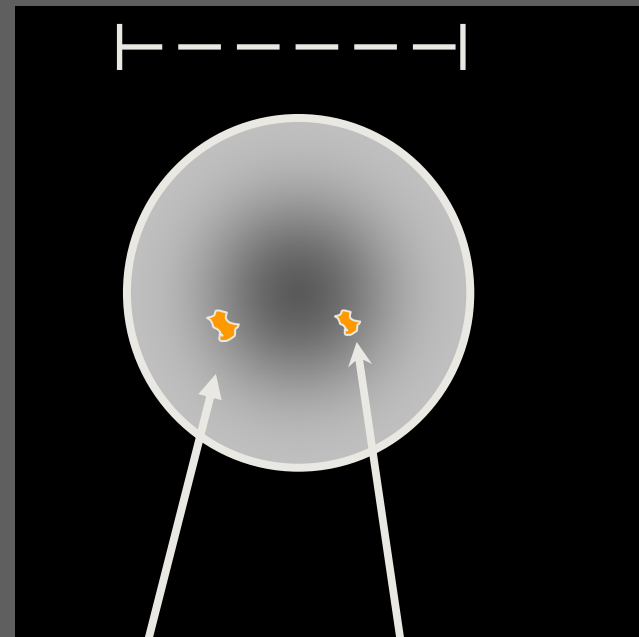
What are Fine Particles?

A complex mixture of extremely small solid particles and drops of liquid in the air



Human Hair (45 - 130 μm diameter)

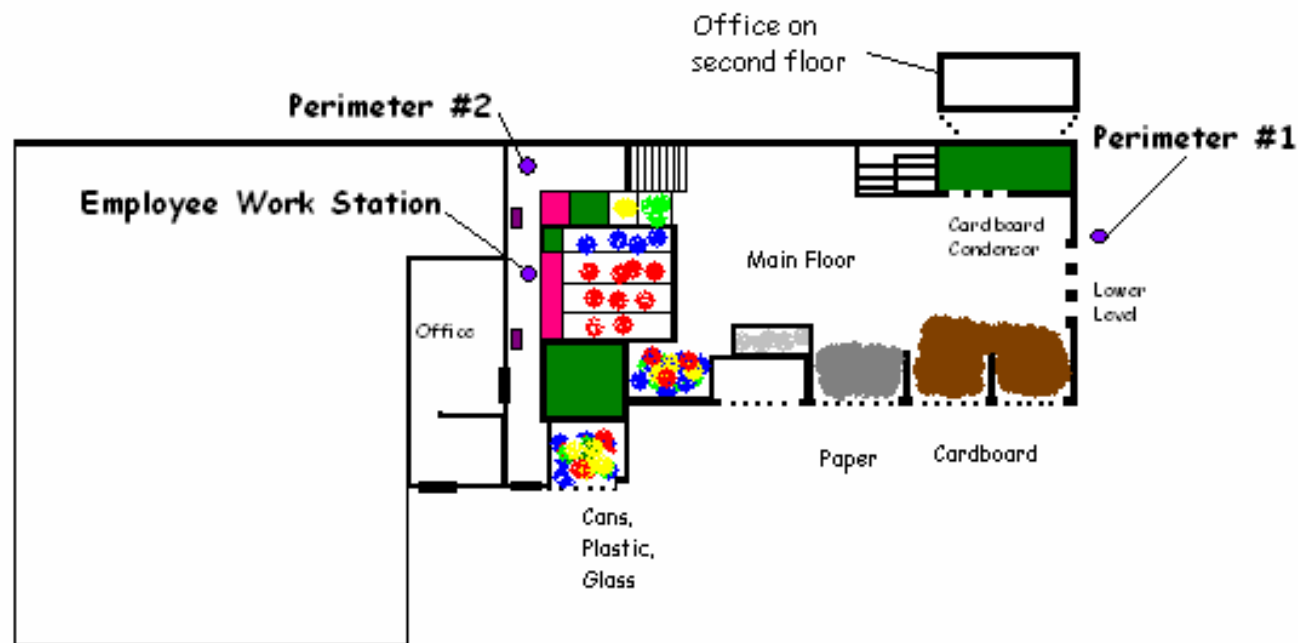
Hair cross section ($\sim 70 \mu\text{m}$)



PM_{10}
($10 \mu\text{m}$)

$\text{PM}_{2.5}$
($2.5 \mu\text{m}$)

City of Keene Recycling Center

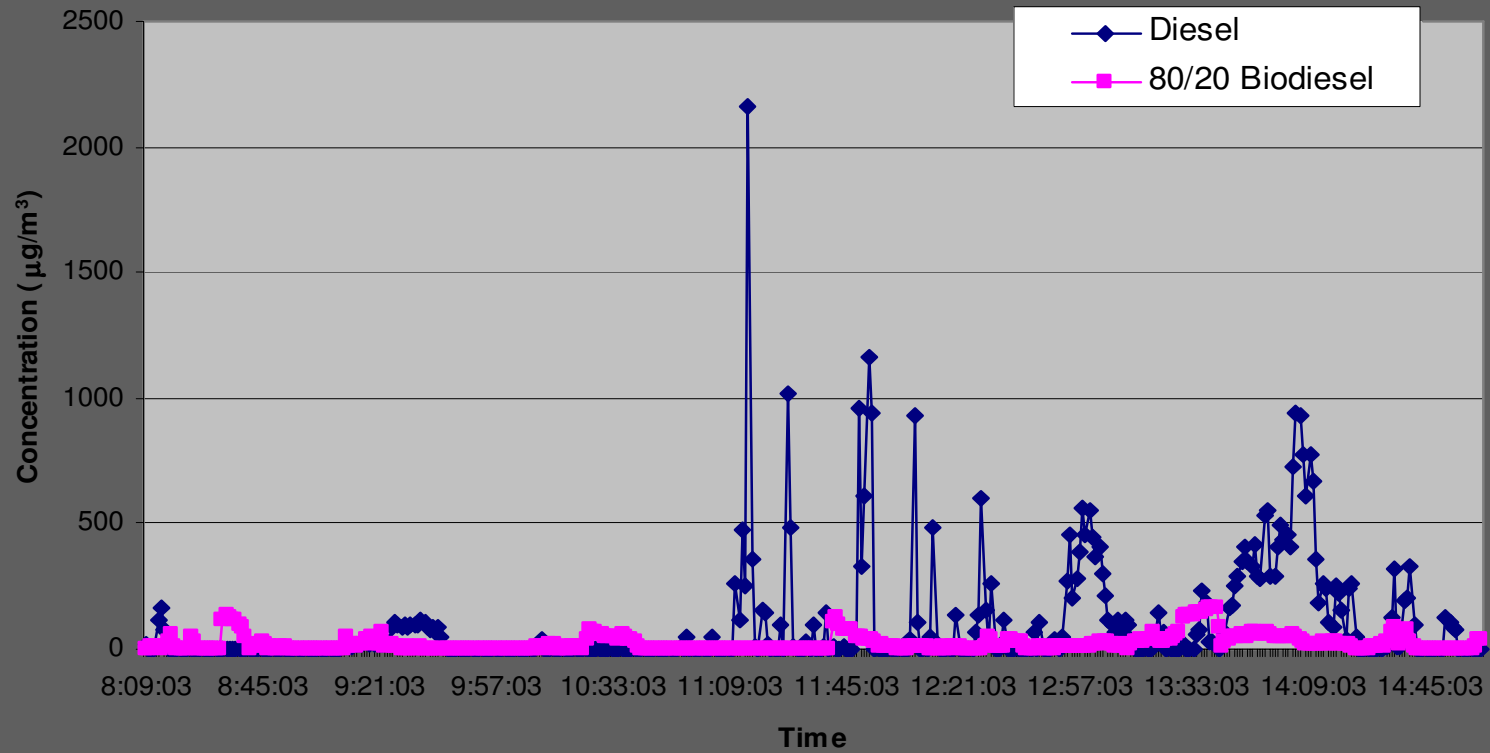


Citizen Drop-off Area

MUNICIPAL FACILITY

Health effects-Study at Keene RC

Perimeter #1, PM_{2.5} Concentrations, Keene Recycling Center



Biodiesel and Warranties!

- ➔ Most major engine companies have stated formally that the use of blends up to B20 will not void their parts and workmanship warranties. This includes blends below 20% biodiesel, such as the 2% biodiesel blends that are becoming more common. Several statements from the engine companies are available on the NBB website.
- ➔ Some engine companies have already specified that the biodiesel must meet ASTM D-6751 as a condition, while others are still in the process of adopting D-6751 within their company or have their own set of guidelines for biodiesel use that were developed prior to the approval of D-6751. It is anticipated that the entire industry will incorporate the ASTM biodiesel standard into their owner's manuals over time.



How is Biodiesel in cold weather ?

Keene had many weeks of below zero temperatures and performance was not compromised. The key to good cold weather performance is to make sure that the Bio portion of the biodiesel is winter blended.

Biodiesel and cold weather

- ⇒ *Biodiesel Antigels “Power Service” statement on biodiesel:*
- ⇒ Biodiesel fuel is a type of diesel fuel made from soy or reprocessed vegetable and/or animal cooking oils. Biodiesel is typically blended with No. 2 diesel fuel in percentages ranging from 2 percent to a maximum of 20 percent. Biodiesel immediately and seamlessly transforms a diesel fleet into a cleaner-burning, alternatively fueled fleet without added investment in infrastructure. However, cold-weather operational problems have limited its use during winter months. Power Service Arctic Express Biodiesel Antigel eliminates the cold-weather operational problems associated with the use of diesel fuels containing up to 20 percent biodiesel (B20).

Keene & Biodiesel

» The Day B-20 was put in the tank in the City we reduced our dependency on Foreign oil by 20 Percent !!!!!!!



AND Biodiesel B-20

⇒ IS THE RIGHT THING TO DO!

BIODIESEL IN KEENE

- ➔ It is working and Keene has cleaner air because of it.
- ➔ Contact Info:
srussell@
ci.keene.nh.us





Biodiesel and the environment.

- ⇒ Are we really helping the environment?
- ⇒ Use of Biodiesel in the Cities 68 trucks and equipment means 417 tons of CO₂ is eliminated each year it is used.

BIODIESEL RESEARCH

(who else uses it)

- ⇒ STATE OF MICHIGAN After a year of testing the product use Biodiesel statewide.

And the question is: Can you burn B-100 ?

Just ask Keene State College and their answer is a resounding YES!. In warm weather they use B-100 in all their equipment on campus. Best thing they ever have done for CLEAN AIR!



What is biodiesel?

Biodiesel is a diesel fuel substitute.

Produced from Domestic Renewable Resources:
any fat or oil, like vegetable oil, used greases, animal fat.

Meets health effect testing (CAA)

Lower emissions

High flash point (>300F), Safe

Biodegradable, Essentially non-toxic.

It is blended with petroleum Diesel at various levels
up to a 20% level.



4-WD FOEXLH



8 HOUR



July 2, 2002
KSC-Plot

EC/OC
Resp. Cyclone

PM_{2.5}

Biodiesel – Keene NH-It's use!

So what uses B-20 in Keene?

- ⇒ 2004 Holder is running on B-20 and the operators like it!



Diesel Engines and Air Quality

Diesel engines - MAJOR environmental and public health concern

- ⇒ Oxides of Nitrogen or NO_x;
- ⇒ Fine particulate matter
- ⇒ A complex mixture of **volatile chemicals**
(carcinogens or respiratory damaging agents)



Downtown LA, 4/29/2004

Source: MSNBCmedia.msn.com