

FIGURE 7B DRAGGING AREAS IN NEW LONDON BAY, EASTERN LIS AND FISHERS ISLAND SOUND

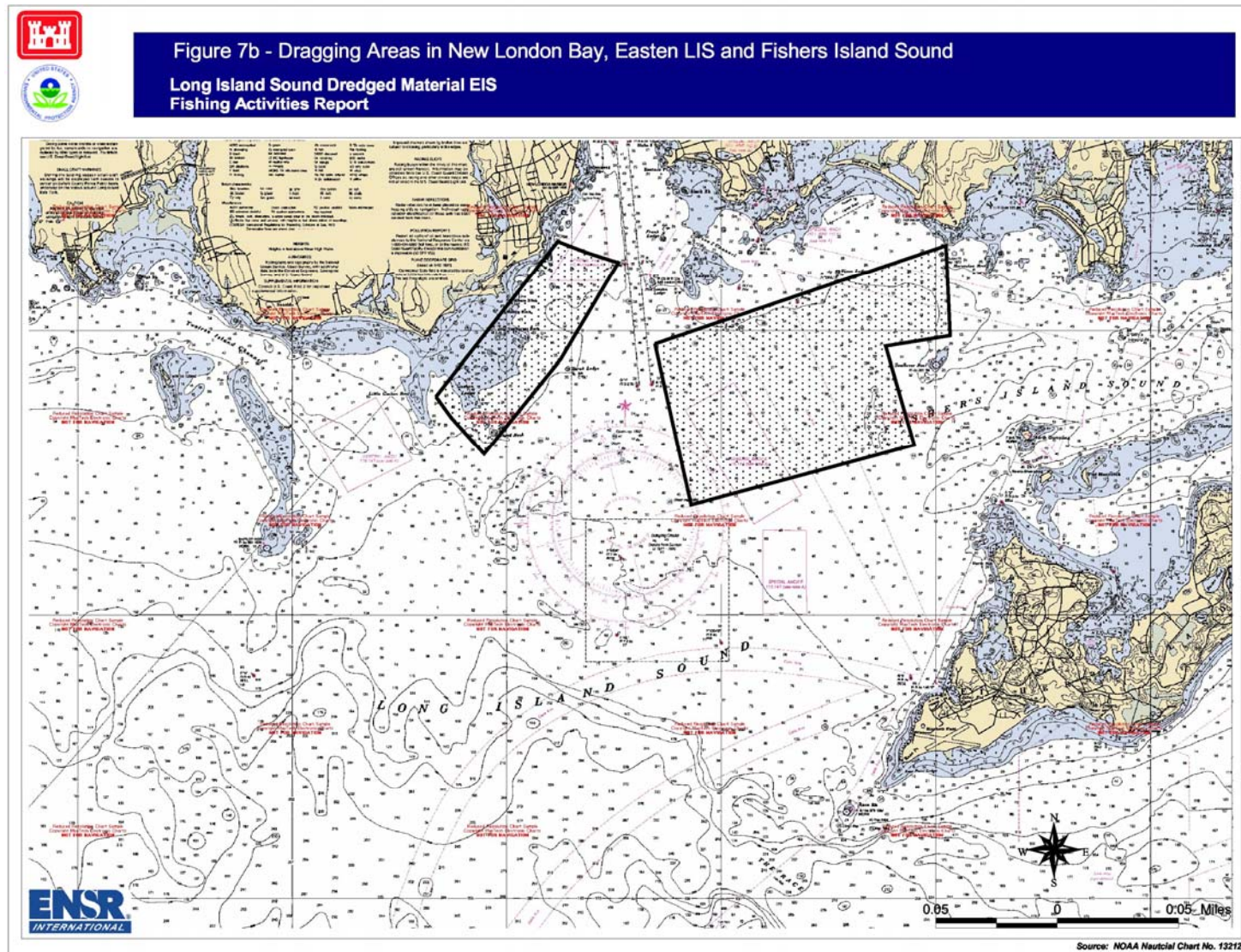
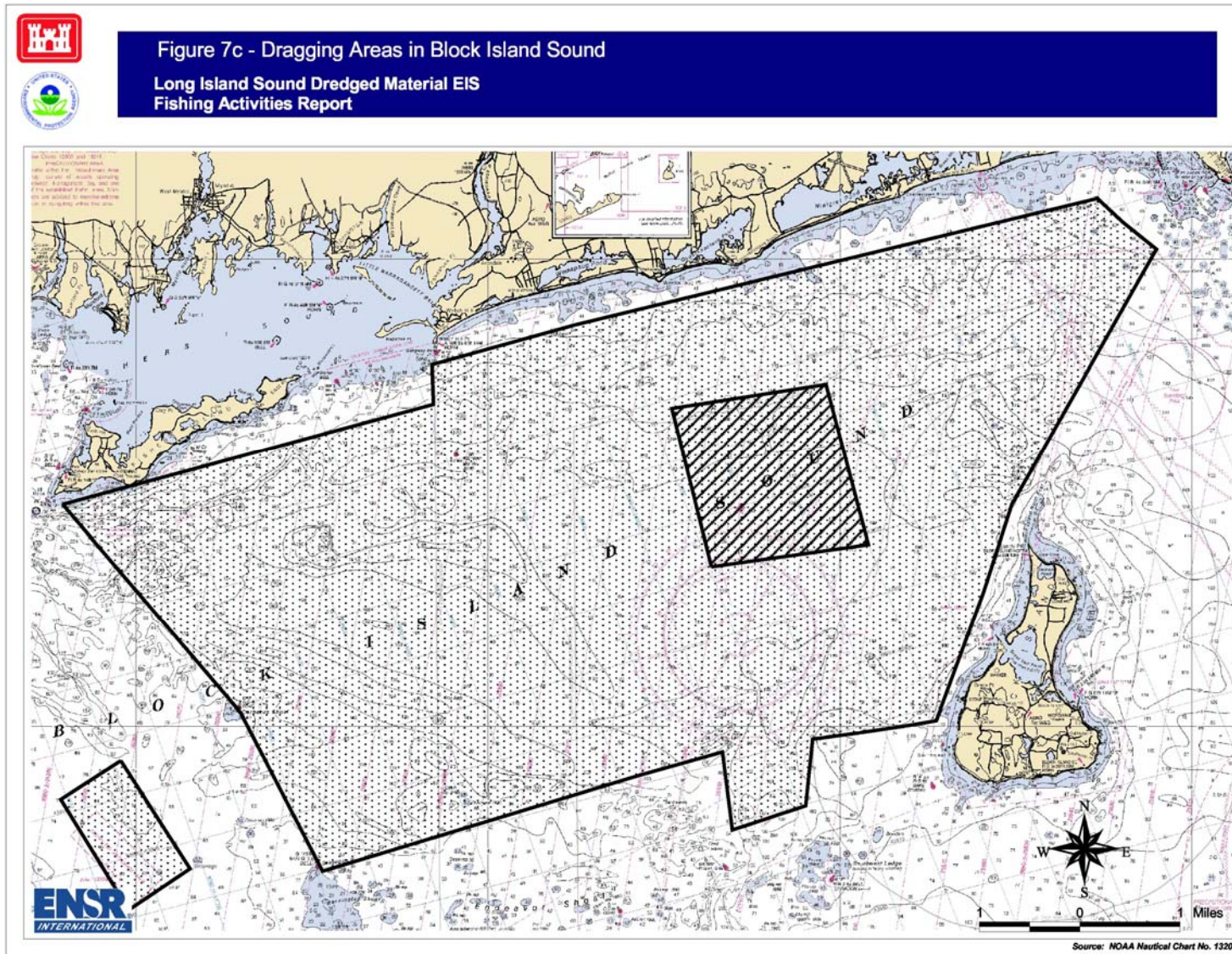


FIGURE 7C DRAGGING AREAS IN BLOCK ISLAND SOUND



3.2.1 Charter Boats

Charter boats are used as a means of income and recreation for those who live in and visit LIS communities. Charter boats can be used for a variety of purposes, including sightseeing, ecotourism, and deep-water bottom fishing or trolling. Several names of charter boat operations in BIS and LIS were acquired through asking some of the initial federal and state contacts mentioned in section 2.1. Only one charter boat captain/owner was available and willing to answer the phone questionnaire. This charter boat captain reported that he fished LIS for 50 years, and according to him, the sites that he values most for his charter fishing business are the areas near or in the Cornfield Shoals Disposal Site (CSDS) south of the Connecticut River. He claimed that dredged material disposal was an asset to charter boat businesses, and that since the cessation of dredged material disposal at the New London Disposal Site (NLDS), finfish have declined. [Note: dredged material disposal has not stopped at NLDS, but smaller volumes have been placed there compared to the Seawolf project in 1997] In addition, the President of the Connecticut Charter Boat Association was interviewed by phone and reflected the same opinions as that of the charter boat captain and claimed that his constituents have not been affected by dredged material disposal activities in LIS in their navigation or fishing activities. He affirmed that fishing near disposal sites was “usually great”. Furthermore, he thought that the locations of the current designated dredged material disposal sites were fine.

3.2.2 Private Anglers

At the time this report was printed, several recreational fishing organizations within LIS responded to calls or e-mails in reference to the issues of dredged material disposal. One president of a recreational association in Rhode Island commented that most of the recreational organizations in LIS are angler associations with a majority of members fishing from shore. The reason for no response from some of these groups may be due to the fact that shore anglers perceive that they are not directly affected by dredged material disposal activities. However, from the responses of those interviewed, the opinion and knowledge of dredged material disposal in LIS varied. For instance, one president of an angler association and a private angler, who both had in-depth knowledge of the dredged material disposal activities and research in LIS, said they were firmly against dredged material disposal in LIS and were concerned about the effects of anoxic conditions on fish populations in LIS during the summer. Both of these recreational fishermen said that the best place for dredged material disposal would be off the continental shelf. On the other hand, another angler association president indicated that he did not think dredged material disposal sites affected marine life negatively, but said that the dredged material disposal sites should not be permanent, but be moved every now and then. All interviewees indicated that they have seen a decline in several important recreational fish species throughout LIS and that they are concerned about the “disappearance” of several species of fish they once saw in the past. Future

efforts to involve the leaders of recreational organizations in disseminating questionnaires to their constituents may provide further information regarding the concerns of dredged material disposal in LIS.

4.0 SUMMARY

Commercial fishing in Long Island Sound is dominated by the fixed gear fisheries for lobster. These activities are nearly ubiquitous throughout the Sound representing the efforts of over 800 individuals and many more part-time participants. Lobster fishing activities have been severely affected by a widespread mortality of lobsters in the fall of 1999. The most severely affected areas are in the Narrows and Western Basin, but loss of revenue and poor production in the 2000 season were reported in the Central Basin and Eastern Basin. It is unknown what long-term effect this mortality event will have on the stocks and sustainable fishery but the short-term impact has been devastating on the fishing industry, families, and communities (HEA 2000). Any report on fishing activity in LIS must be cautious about assumptions of future activities, particularly in the Western Sound. What is clear is that a highly productive fishery has been developed throughout the Sound, our report reflects the development of that fishery prior to the mortality event.

The majority of respondents reported minimal direct impacts from disposal activities but were not comfortable with discharge of contaminated sediments in LIS based largely on concerns for the health of the fisheries and ecosystem. Some respondents reported improved fishing at disposal sites, no respondents reported direct loss of catch on sites except for incidents of short dumps near sites. Only one respondent supported relocating any of the existing disposal sites but support for their continuing use was mixed. Although some small areas have been identified as less productive fishing grounds, none were identified in depositional areas. In essence respondents were not in favor of continued disposal of contaminated dredged materials in LIS, but if sites had to be selected they would prefer to keep the existing sites because they are a known impact and location.

Efforts to collect information on the activities of other commercial fishing and recreational fishing groups have been unsuccessful thus far. We recommend continued effort with individual lobstermen and draggers and use of volunteer angler surveys to supplement this report. It is important that this characterization of fishing activities be as broadly representative as possible. We welcome comments and corrections from anyone involved in any aspect of the fishing industry in Long Island. Any information on fishing activities in Block Island and Rhode Island Sounds (up to Point Judith) that could be added to this study would be welcome. Potential respondents or commentators may contact either author:

Drew A. Carey (401) 849-9236

coastal.vision@worldnet.att.net

Erick Cooke (978) 589-3000

ecooke@ensr.com

5.0 REFERENCES

- Bernard, H.R. 1994. *Research Methods in Anthropology: Qualitative and Quantitative Approaches*, 2nd edition. Sage Publications, Newbury Park, CA, 584 pp.
- Connecticut Department of Environmental Protection 2000. Information regarding the impact of 1999 Lobster mortalities in Long Island Sound. Bureau of Natural Resources, Marine Fisheries Office. February 4, 2000.
- Gilchrist, V. 1992. Key Informant Interviews. In: Crabtree and Miller, eds., *Doing Qualitative Research*, Sage Publications, Newbury Park, CA, 276 pp.
- Human Ecology Associates 2000. Social impact of Lobster Die-off (in CTDEP 2000).
- Knebel, H.J., Signell, R.P., Rendigs, R.R., Poppe, L.J., List, J.H. 1999. Maps showing acoustic and textural characteristics and distribution of bottom sedimentary environments in Long Island Sound, Connecticut and New York. Geologic Investigations Series Map I-2659, U.S. Geological Survey, Reston, VA.
- Kuzel, A. 1992. Sampling in Qualitative Inquiry. In: Crabtree and Miller, eds., *Doing Qualitative Research*, Sage Publications, Newbury Park, CA, 276 pp.
- Lobue, C., Simpson, D., Gotschall, K. 2000. LIS Loster Fishery: A brief history, and current events. Presentation to Long Island Sound Lobster Health Symposium, April 2000. New York Department of Environmental Conservation and Connecticut Department of Environmental Protection.
- New York Seafood Council, 1999. *New York's Lobster Industry*. New York Seafood Council, 252 East Montauk Highway, Hampton Bays, NY 11946.

APPENDIX A
QUESTIONNAIRE

QUESTIONNAIRE ON FISHING ACTIVITIES IN LONG ISLAND SOUND

PRELIMINARY DRAFT

COMMERCIAL/RECREATIONAL FISHING

With this questionnaire we hope to improve our understanding about the locations of commercial and recreational fishing throughout Long Island, Block Island and Rhode Island Sounds. Your answers, along with other fisheries data, will be used to evaluate fish and fishery use in these Sounds. The Army Corps of Engineers (ACE) and the Environmental Protection Agency (EPA) will prepare an environmental impact statement (EIS) that will consider designation of one or more dredged material disposal sites in these waters. This EIS will assess if there are places where approved dredged material can be placed with minimal interference with fish or fishing activities.

Your participation in this evaluation is extremely valuable to us, and will be very helpful to the fishing communities of the Sounds listed above. With more accurate information about fishing patterns, we will be able to characterize more accurately potential impacts on fishing and fishery resources from dredged material disposal. The fish stocks will be evaluated with trawl data supplied by the Connecticut Department of Environmental Management (CTDEP) but these data will not tell us how and where the fish are harvested. We are asking those of you most familiar with harvesting fish and shellfish to help us put together a good picture of harvesting activities.

Any information we receive will be confidential and will only appear in a general description of patterns of usage.

We will use the information gathered from this survey to develop maps showing approximate locations of fishing activities. The intent is to depict areas (not specific sites) where specific gear is used, species that are taken and the relative intensity of activities during different seasons. These maps will be distributed to all fishermen who participate as soon as the survey is complete (about six months from now). We will ask you for corrections to the maps and feedback on the descriptions of usage.

NOTE: We recognize that the die-off of lobsters in the Western Sound has had a terrible impact on fishermen in this area and that many fishermen have had to stop fishing. Information on fishing activities before the die-off is still helpful to this survey. We would appreciate hearing about your experiences whether you are currently fishing or not.

Thank you for your help.

Please return the questionnaire in the attached, stamped envelope to:

Drew A. Carey
CoastalVision
215 Eustis Avenue
Newport, RI 02840

PHONE: (401) 849 9236
FAX: (401) 849-9236

USAGE & PATTERNS: We would like to ask some specific questions about your fishing patterns and usage of the Sounds. This information will be used with other answers to produce maps of general patterns of usage (areas with intensive lobstering, areas with mixed trawling). Your specific answers will not be provided to agencies, other fisherman or the public.

Areas of Sounds listed in attached map	1	2	3	4	5	6	7	8	9	10	11	12	13	14	15	16
% of time spent fishing in each area																
Month(s) spent fishing in each area																
Seasons you fish in each area: Winter-W, Summer-S, Fall-F, Spring-SP																
Species of fish/shellfish you fish in each area: Lobster-L, Flounder-F, Scup-S, Tautog-T, please write in other species																
Type of gear used in each area																

FISHING PRACTICES

What kind of gear do you use in each fishing region?

Typically, how long is gear set in the water? (circle best answer)

- One month Between 2-6 months Between 6-12 months All year

How many times each month do you set gear in each area you fish? (circle best answer)

- Every day Weekly Once a month

Do you remove gear during slow months? If so, what months?

How often do you clean gear?

Have you seen a change in the need to clean gear?

Towed gear

What size of towed gear do you use?

How long do you trawl before emptying your net?

Has this time changed over your fishing career?

How has your fishing changed?

FISHING EXPERIENCE

We would like to ask additional questions about your experience fishing. These answers will help the ACE and EPA to evaluate potential impacts of disposal activity on fishing and fish resources. Because these answers are more general they may be provided to agencies, other fishermen or the public to provide an idea of the experiences of individual fishermen.

What fish or shellfish do you see in your bycatch?

Have you seen any changes in the species or their number in the bycatch?

Have you ever experienced difficulty fishing an area after a disposal activity? (circle which one you have experienced)

Access to fishing areas Mud in gear Lost gear Need to move gear to allow surveys or disposal Other

Do you fish near existing disposal areas? If so, list the names of the disposal areas.

What have you noticed about fishing activity near disposal sites? (circle or write your answer)

Better fishing Worse fishing No change

Any species associated with the site?

Are there other areas of the Sound that you think would be more suitable for dredged material disposal sites?

Please indicate on a map specific areas

Would you rather see the sites remain where they are?

SEE PAGE ONE FOR INFORMATION ON RETURNING QUESTIONNAIRE

APPENDIX B
TELEPHONE INTERVIEW FORM

Fishing Activities Telephone Call Summary Sheet

By: Drew A. Carey

Date:

Talked With:

Project Number:

Of:

Project Name: LIS DM Disposal EIS

Telephone Number:

Subject: Fishing Activities LIS

I am a marine scientist from Rhode Island calling to find out if you are interested in discussing your experiences with fishing and dredged material disposal in LIS. I am working on behalf of the EPA and COE who are preparing an EIS on disposal sites in the Sound. I am interested in how fishermen use the Sound and how that might be affected by disposal activity.

If you want to have an influence on the decision to designate disposal sites this is an opportunity to get involved early. I hope to get wide input from the fishing community to help with the decision on siting.

How long have you been fishing in LIS? years

In what areas of the Sound do you fish?

How many others fish in this area?

When do you fish? **YR** W S F SP

haul out gear? (wire?)

Active

Slow

What do you fish for? Lobster X Shellfish Finfish

How long is gear set? 2 days to 2 weeks

Have you seen changes in the type and number of animals caught in your career?

Bycatch:

Fouling:

Areas with little fishing effort?

Have you ever experienced difficulty fishing an area after disposal activity?

Do you fish near existing disposal areas?

What have you noticed about fishing near disposal sites?

Are there areas of the Sound that you think would be more suitable for dredged material disposal sites?

Would you rather see the sites remain where they are?

Any other thoughts?

APPENDIX C
RESPONDENTS

Respondent	Occupation	Questionnaire	Interview	Comments
Augie Carbone	Lobsterman		Telephone	No catch this year
Bill D'Amicis	Lobsterman		Telephone	
Nick Degenero	Lobsterman		Telephone	Reduced effort in Fall
George Doll	Lobsterman	Reviewed		
Ron Domeurat	Exec. Dir, Coastal Conservation Association		Telephone	Would like to see dredged material disposal in LIS halted
Joe Finke	Lobsterman		Telephone	
Joe Garofano	President, CT Charter Boat Association		Telephone	No problems with current dredged material disposal sites.
Joe Gilbert	Shellfish		Telephone	
Bob Guzzo	Dragger		Interview	Has worked LIS and BIS
Bob Harrington	Lobsterman Shellfishing		Telephone	Reduced effort in 2000, very little catch
Mike Horvath	Lobsterman	Reviewed	Telephone	
Charles Johnson	RI Mobile Sport Fishermen Association		Telephone	Does not think dredged material disposal would hurt marine life
D.J. King	Lobsterman		Telephone	
Jim King	Lobsterman		Telephone	
John Makowsky	Lobsterman		Telephone	Out of industry
Art Medeiros	Dragger		Interview	Semi-retired
Tim Medeiros	Dragger		Interview	Works LIS and BIS
Steven Medeiros	RI Saltwater Anglers Assoc.	Reviewed	Telephone and e-mail	Recreational clubs are mostly anglers
Dan Pelloth	Lobsterman		Telephone	
Ed Rodman	Lobsterman		Telephone	
Bob Smith	Dragger		Interview	Works LIS and BIS
Mike Theiler	Lobsterman		Telephone	
Ken Tober	Lobsterman		Telephone	
John Wadsworth	Charter boat company		Telephone	Dredge disposal helps his business; attracts fish
Ron Whitely	Pres., CT/RI Coastal Fly-fishers		Telephone	Firmly against disposal in LIS
John Wadsworth	Charter boat company		Telephone	Dredge disposal helps his business; attracts fish