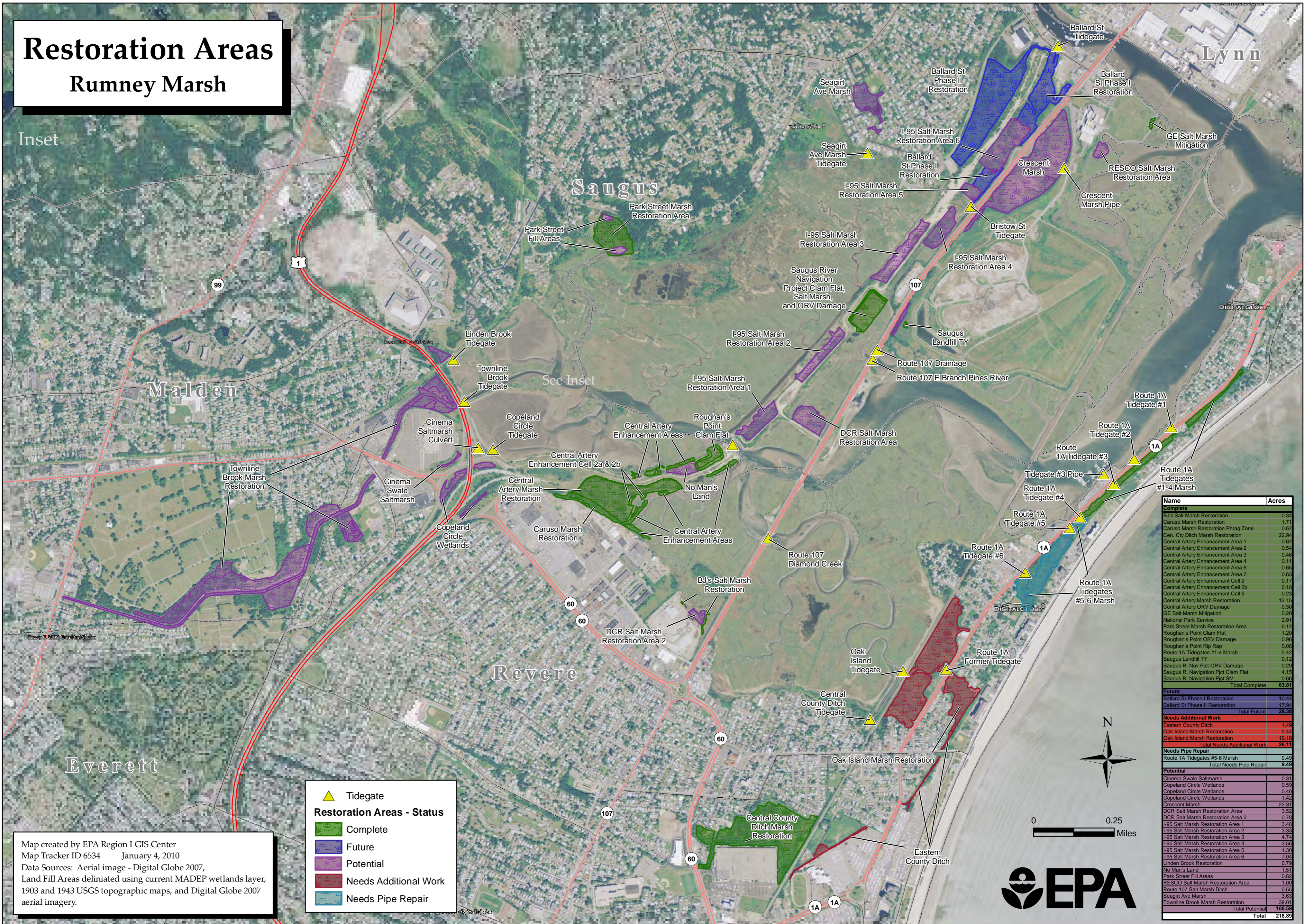


# Restoration Areas Rumney Marsh

Inset



▲ Tidegate

**Restoration Areas - Status**

- Complete
- Future
- Potential
- Needs Additional Work
- Needs Pipe Repair

Map created by EPA Region I GIS Center  
 Map Tracker ID 6534 January 4, 2010  
 Data Sources: Aerial image - Digital Globe 2007,  
 Land Fill Areas delineated using current MADEP wetlands layer,  
 1903 and 1943 USGS topographic maps, and Digital Globe 2007  
 aerial imagery.

Name	Acres
<b>Complete</b>	
BJ's Salt Marsh Restoration	0.34
Caruso Marsh Restoration	1.71
Caruso Marsh Restoration Phrag Zone	0.67
Central Artery Marsh Restoration	22.94
Central Artery Enhancement Area 1	0.62
Central Artery Enhancement Area 2	0.54
Central Artery Enhancement Area 3	0.46
Central Artery Enhancement Area 4	0.11
Central Artery Enhancement Area 6	0.65
Central Artery Enhancement Area 7	0.63
Central Artery Enhancement Cell 2	0.17
Central Artery Enhancement Cell 2b	0.18
Central Artery Enhancement Cell 5	0.23
Central Artery Marsh Restoration	12.15
Central Artery ORV Damage	0.30
GE Salt Marsh Mitigation	0.20
National Park Service	2.91
Park Street Marsh Restoration Area	6.12
Roughan's Point Clam Flat	1.20
Roughan's Point ORV Damage	0.06
Roughan's Point Rip Rap	0.08
Route 1A Tidegates #1-4 Marsh	5.42
Saugus Landfill TY	0.12
Saugus R. Nav Pict ORV Damage	0.29
Saugus R. Navigation Pict Clam Flat	4.15
Saugus R. Navigation Pict SM	0.65
<b>Total Complete</b>	<b>63.81</b>
<b>Future</b>	
Ballard St Phase I Restoration	10.44
Ballard St Phase II Restoration	17.94
<b>Total Future</b>	<b>28.38</b>
<b>Needs Additional Work</b>	
Eastern County Ditch	1.49
Oak Island Marsh Restoration	5.44
Oak Island Marsh Restoration	19.18
<b>Total Needs Additional Work</b>	<b>26.11</b>
<b>Needs Pipe Repair</b>	
Route 1A Tidegates #5-6 Marsh	9.49
<b>Total Needs Pipe Repair</b>	<b>9.49</b>
<b>Potential</b>	
Cinema Swale Saltmarsh	0.31
Copeland Circle Wetlands	0.59
Copeland Circle Wetlands	0.40
Copeland Circle Wetlands	1.42
Crescent Marsh	22.81
DCR Salt Marsh Restoration Area	3.52
DCR Salt Marsh Restoration Area 2	0.78
I-95 Salt Marsh Restoration Area 1	3.49
I-95 Salt Marsh Restoration Area 2	3.33
I-95 Salt Marsh Restoration Area 3	4.74
I-95 Salt Marsh Restoration Area 4	3.56
I-95 Salt Marsh Restoration Area 5	1.30
I-95 Salt Marsh Restoration Area 6	7.04
Linden Brook Restoration	0.79
No Man's Land	1.51
Park Street Fill Areas	0.82
RESCO Salt Marsh Restoration Area	1.00
Route 107 Salt Marsh Ditch	0.55
Seagirt Ave Marsh	3.63
Townline Brook Marsh Restoration	39.01
<b>Total Potential</b>	<b>100.59</b>
<b>Total</b>	<b>218.89</b>



0 0.25 Miles

