

NPDES Phase II Small MS4 Permit Program

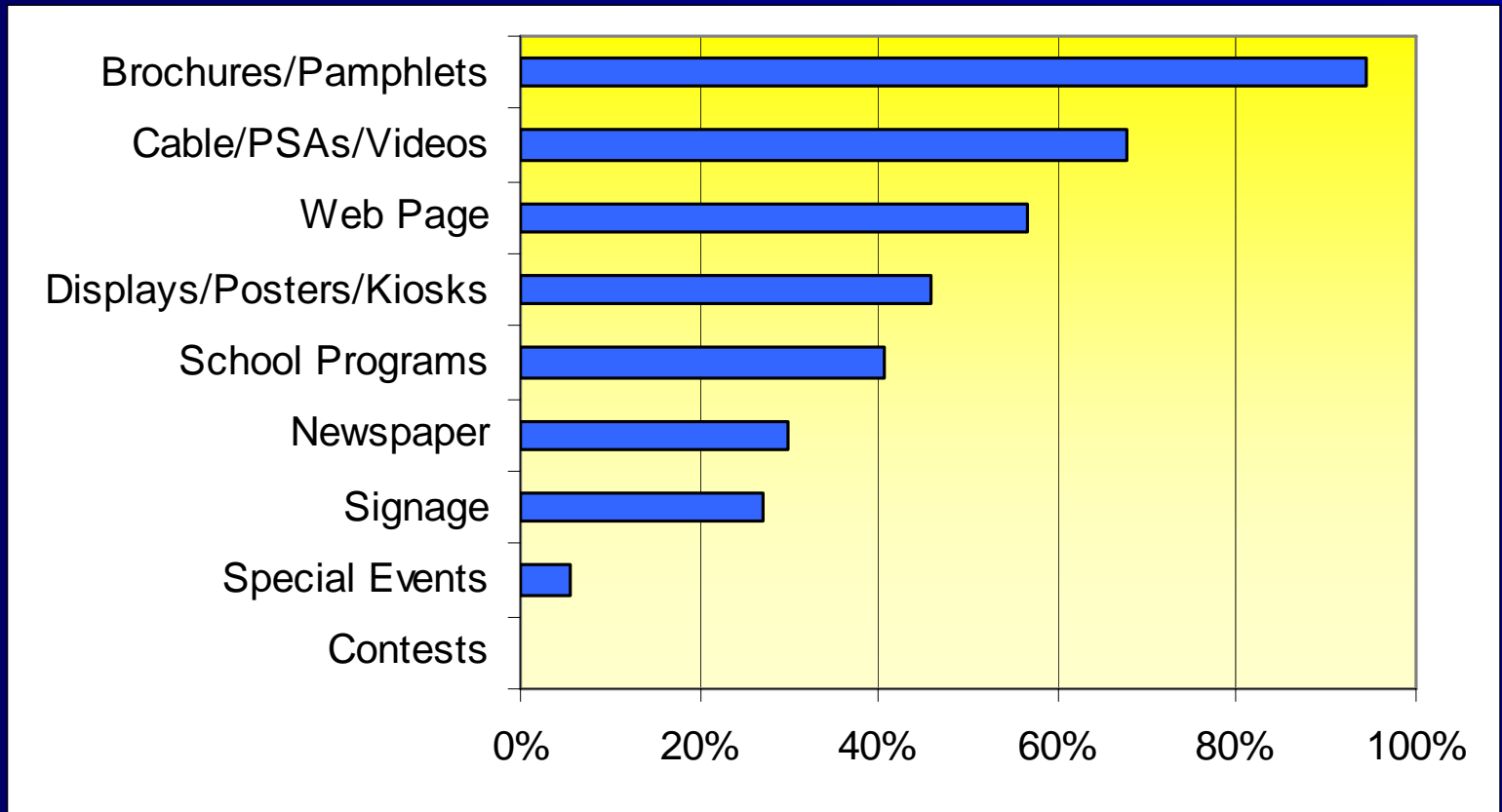
Permit Year 3



SWMP Summaries &
Select Metrics
NH Traditional MS4s

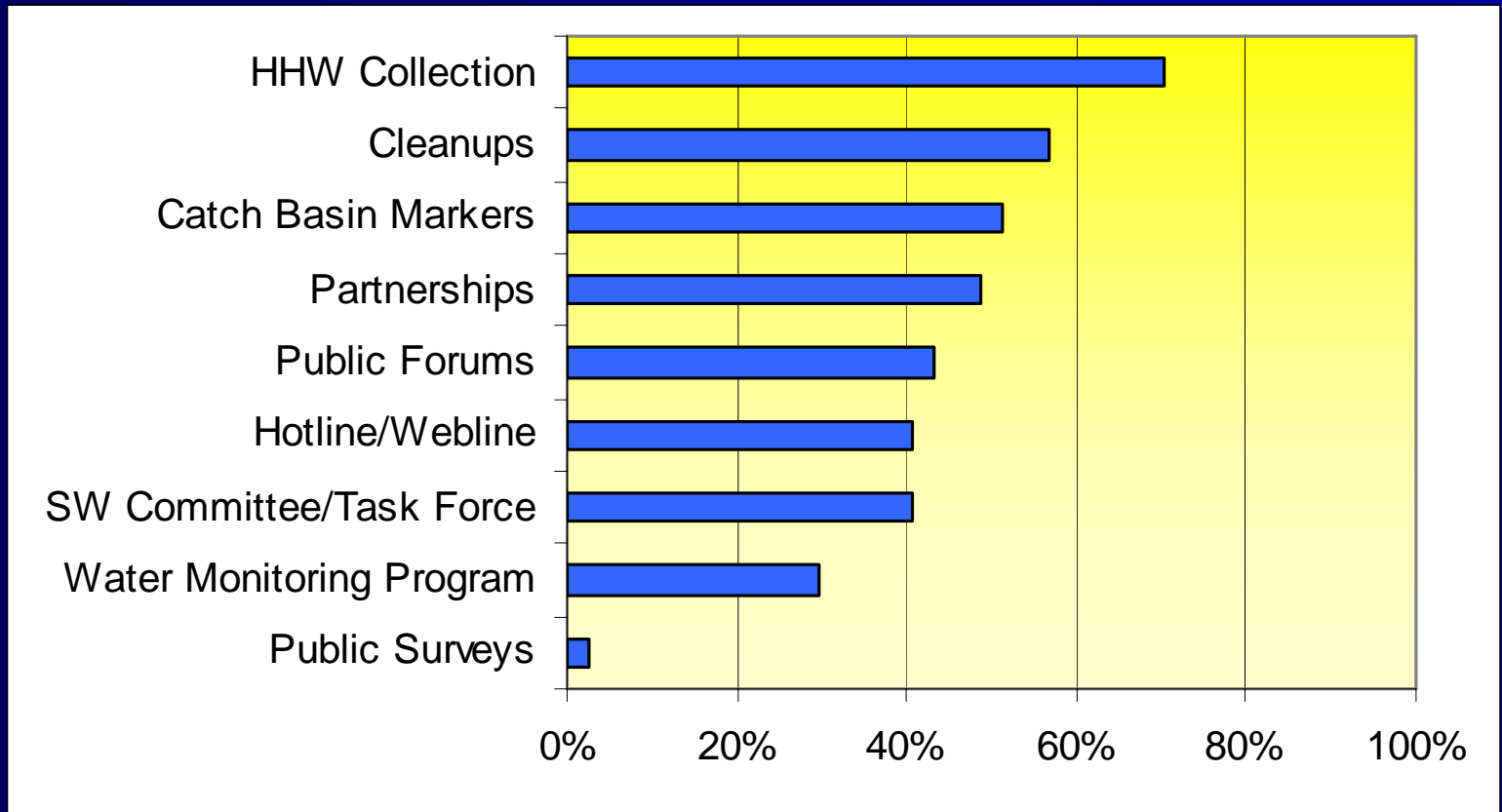
MCM #1

Education & Outreach Practices

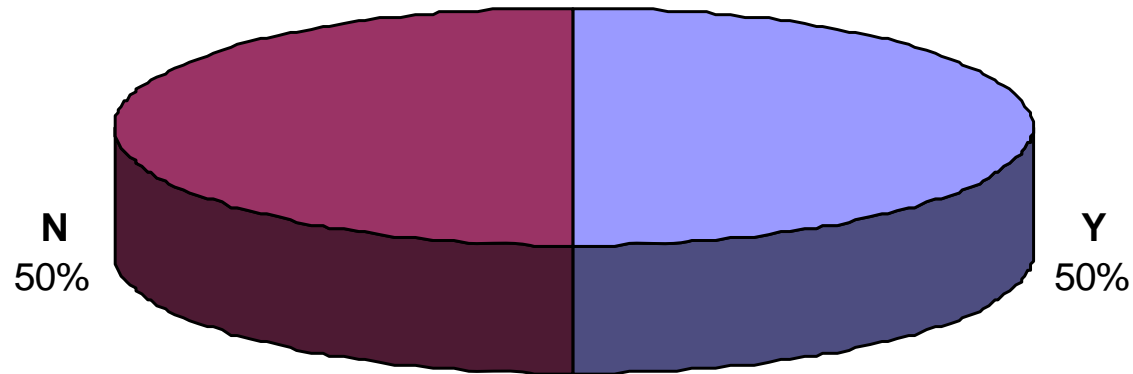


MCM #2

Public Participation & Involvement



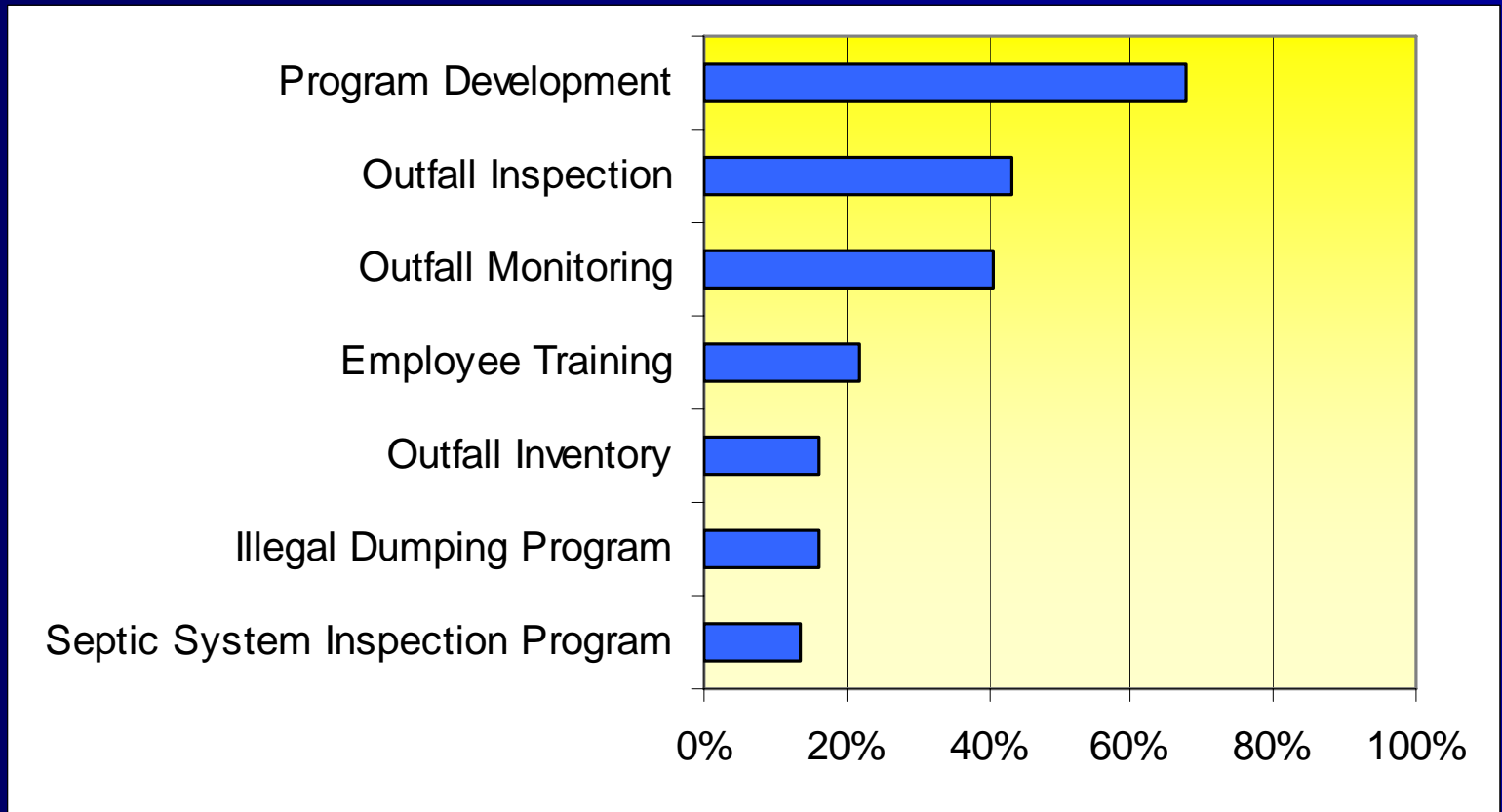
Stormwater Management Committee Established



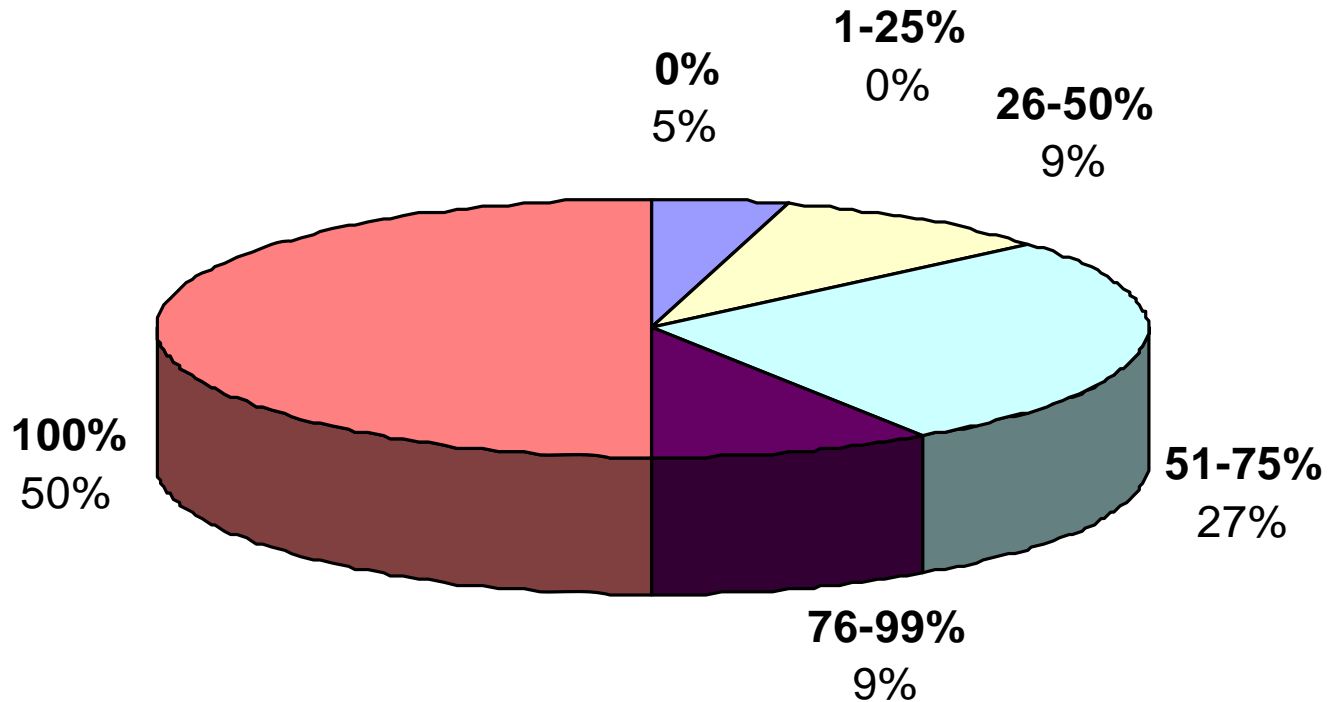
*59% reporting (22 of 37 year 3 annual reports received)

MCM #3

Illicit Discharge Detection & Elimination

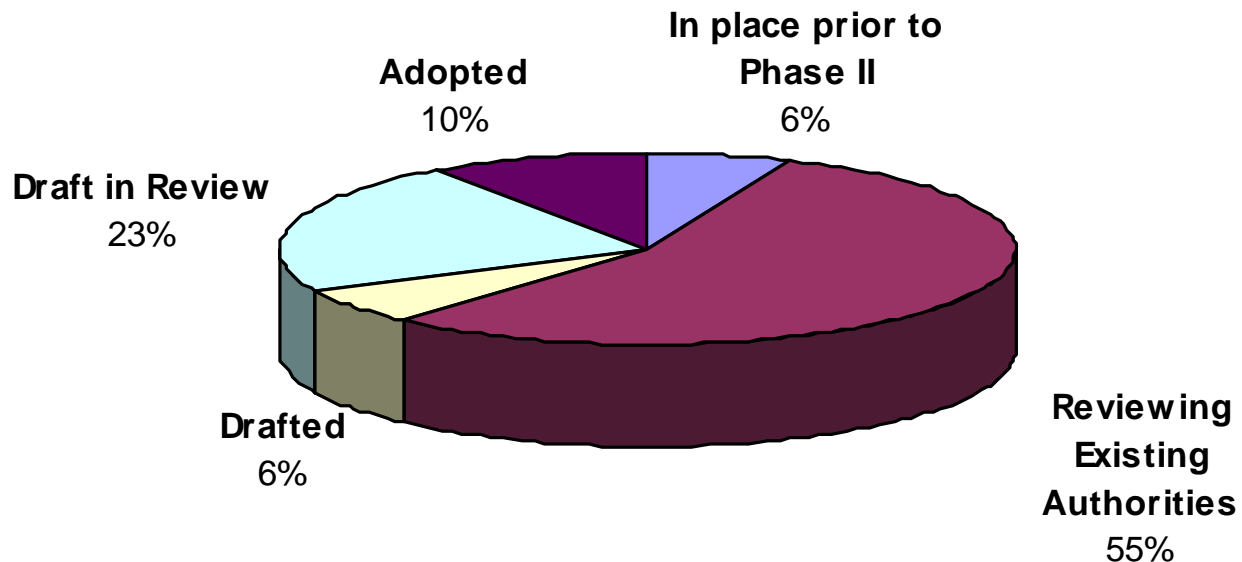


Status of Outfall Mapping (% Complete)*



* 59% reporting (22 of the 37 year 3 annual reports received)

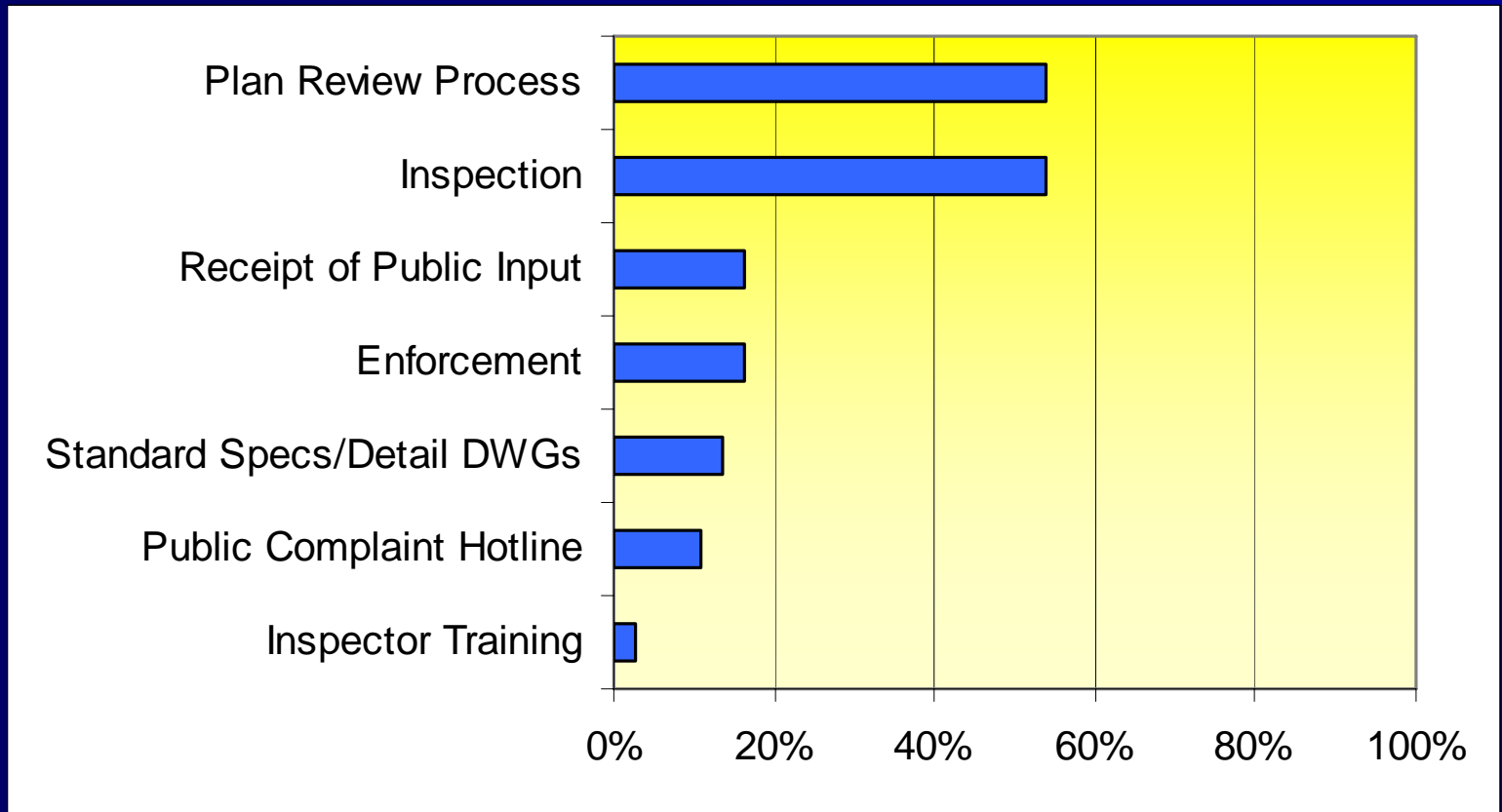
Regulatory Mechanism Status IDDE*



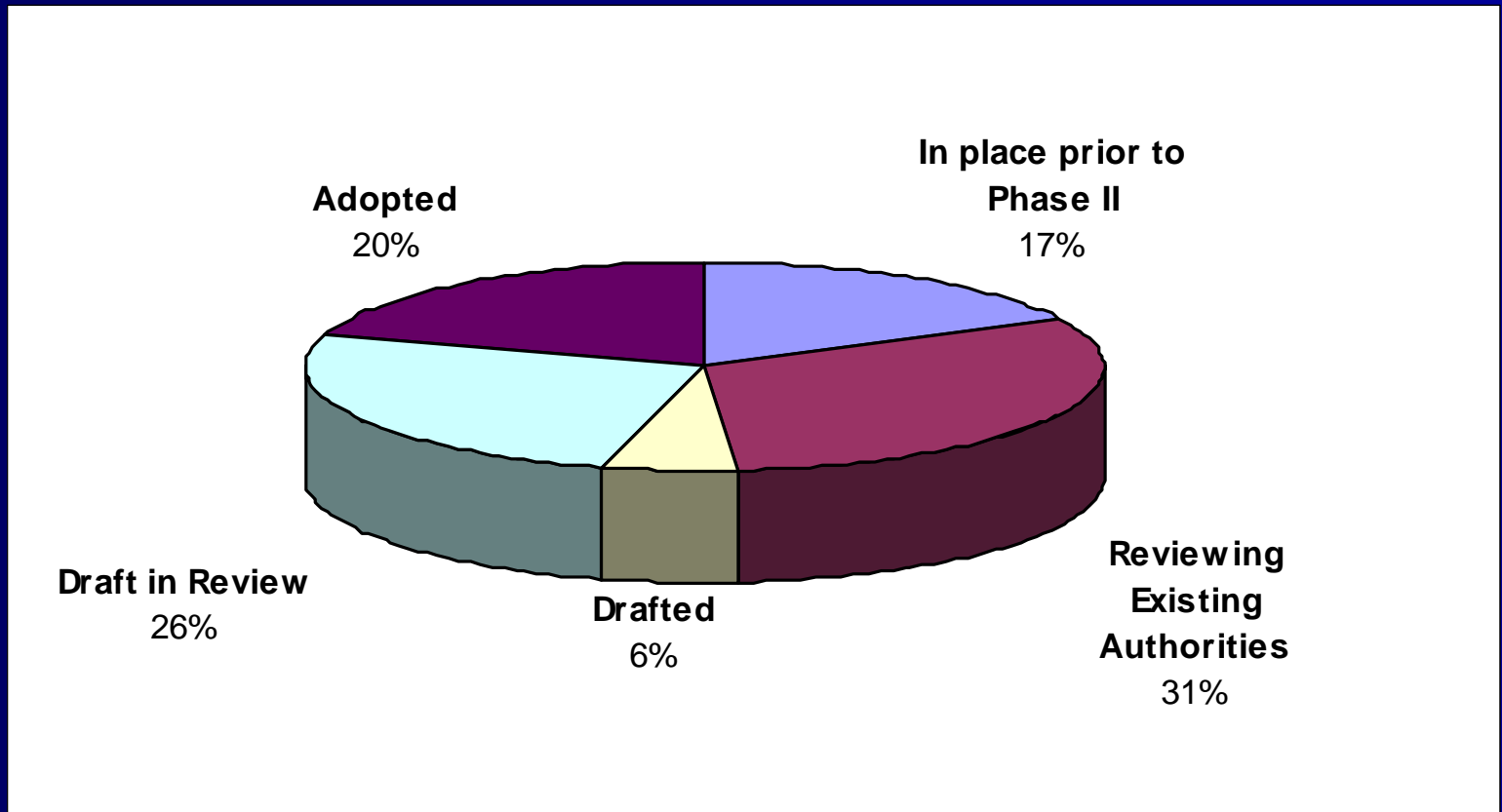
* 84% reporting (31 of 37 year 3 annual reports received)

MCM #4

Construction Site Runoff Control



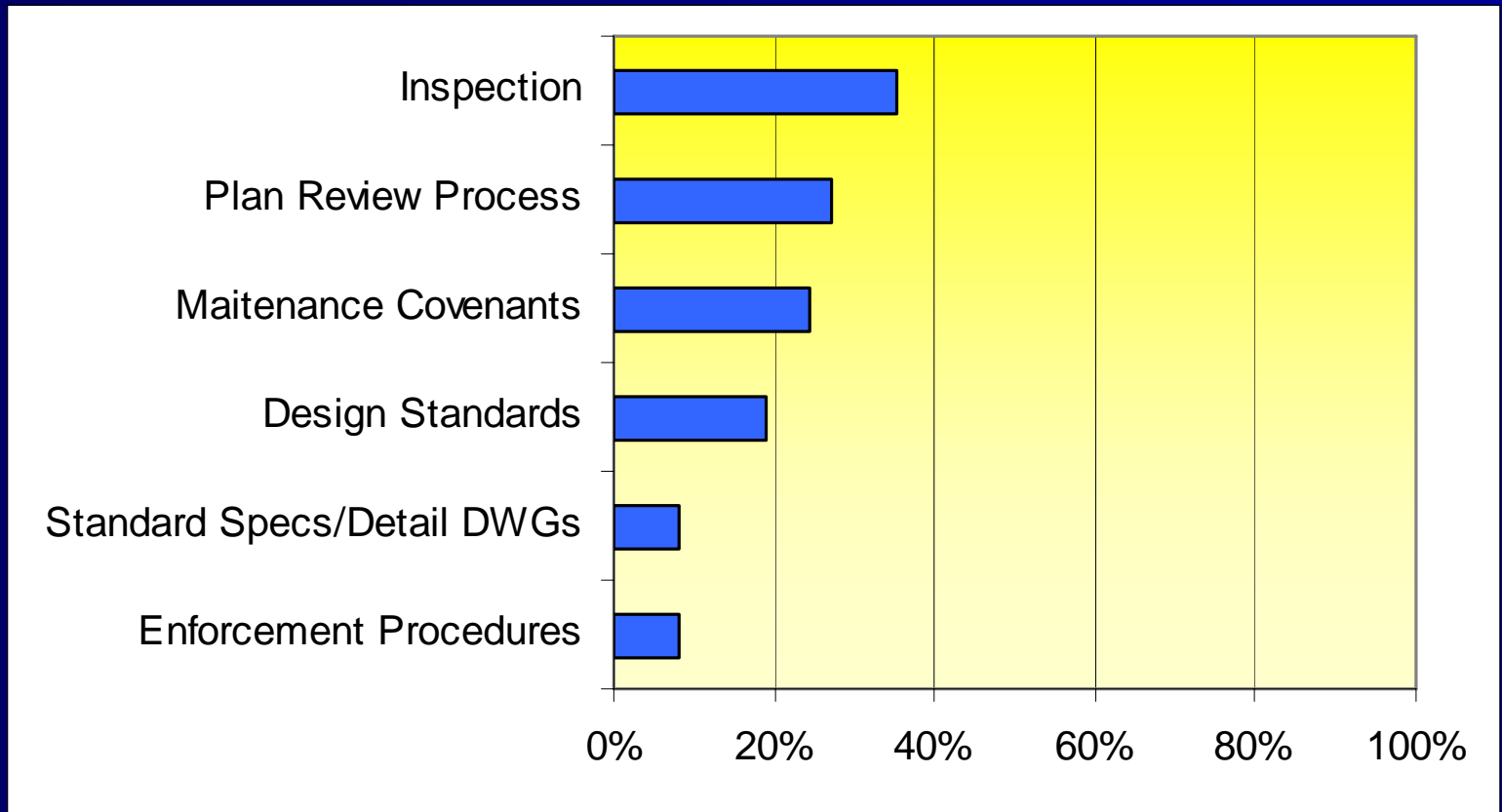
Regulatory Mechanism Status Construction Site Runoff*



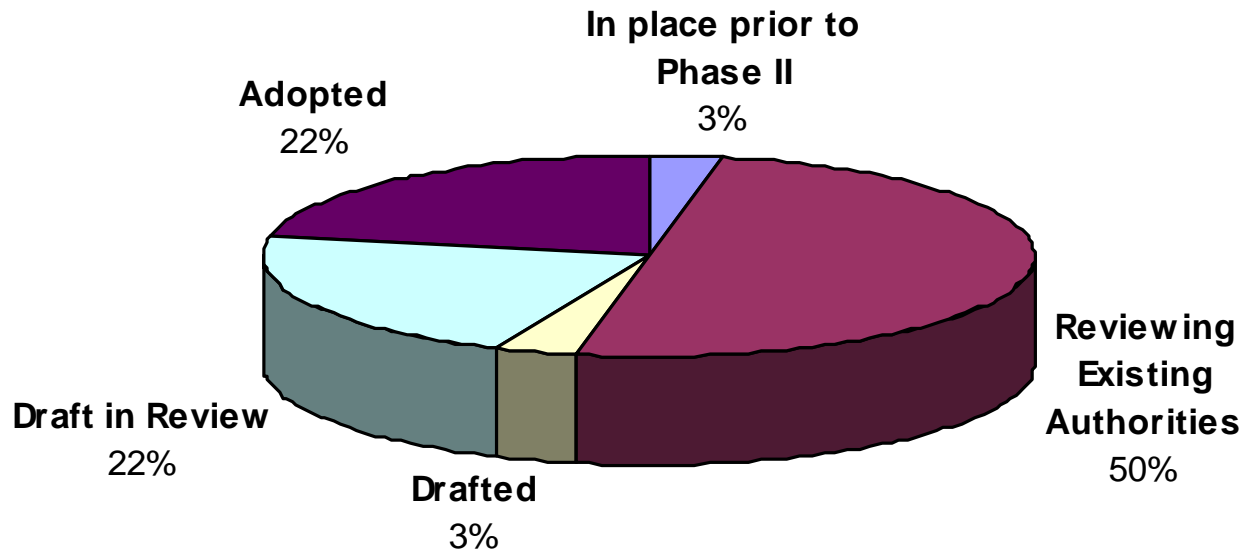
*95% reporting (35 of 37 year 3 annual reports received)

MCM #5

Post-Development Runoff Control



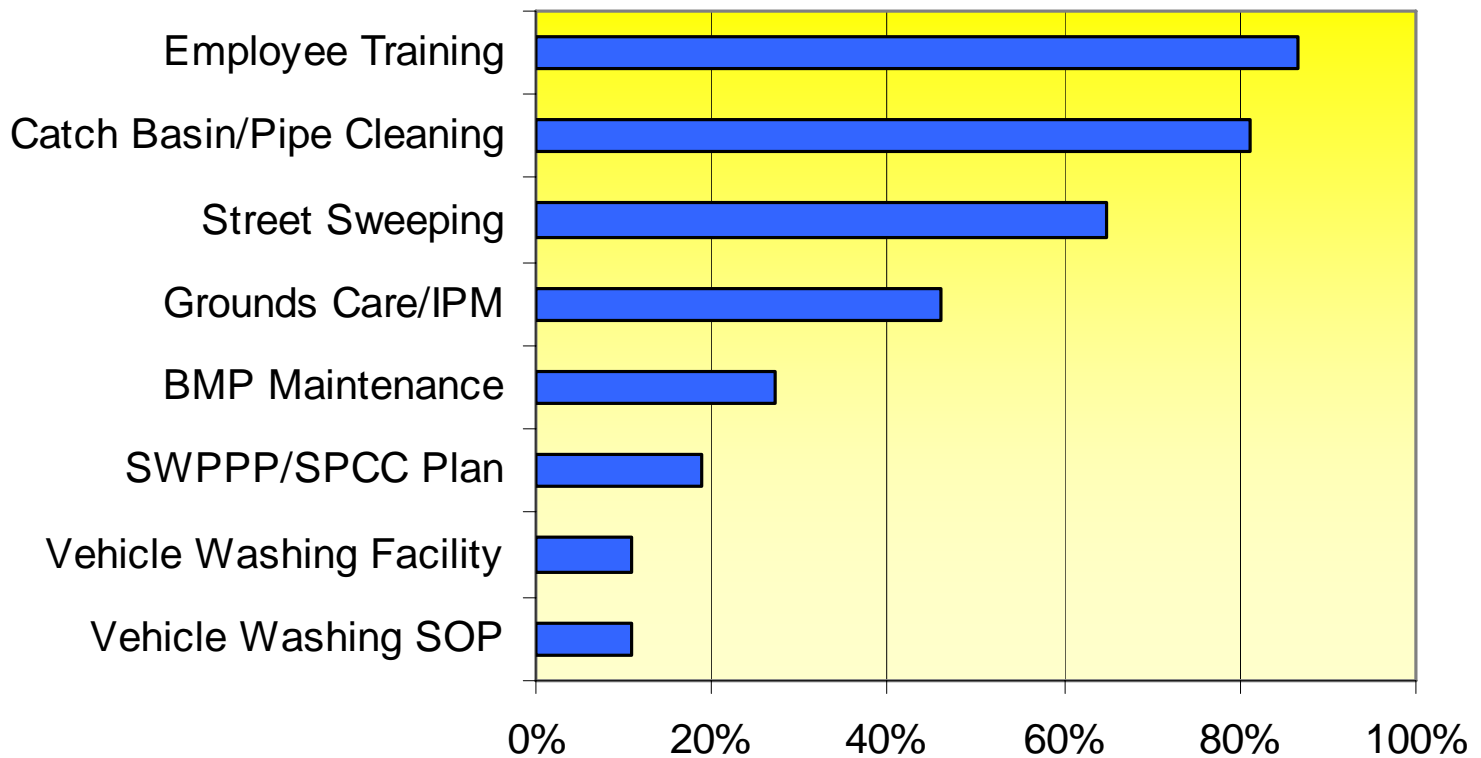
Regulatory Mechanism Status Post Development Runoff*



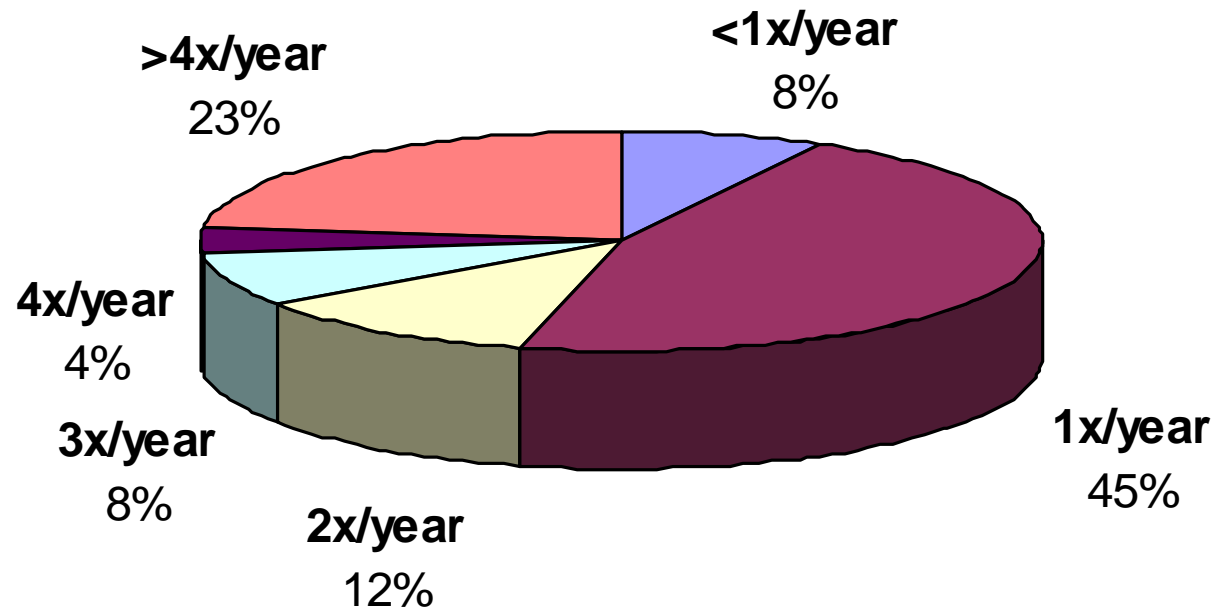
* 86% reporting (32 of 37 year 3 annual reports received)

MCM #6

Good Housekeeping

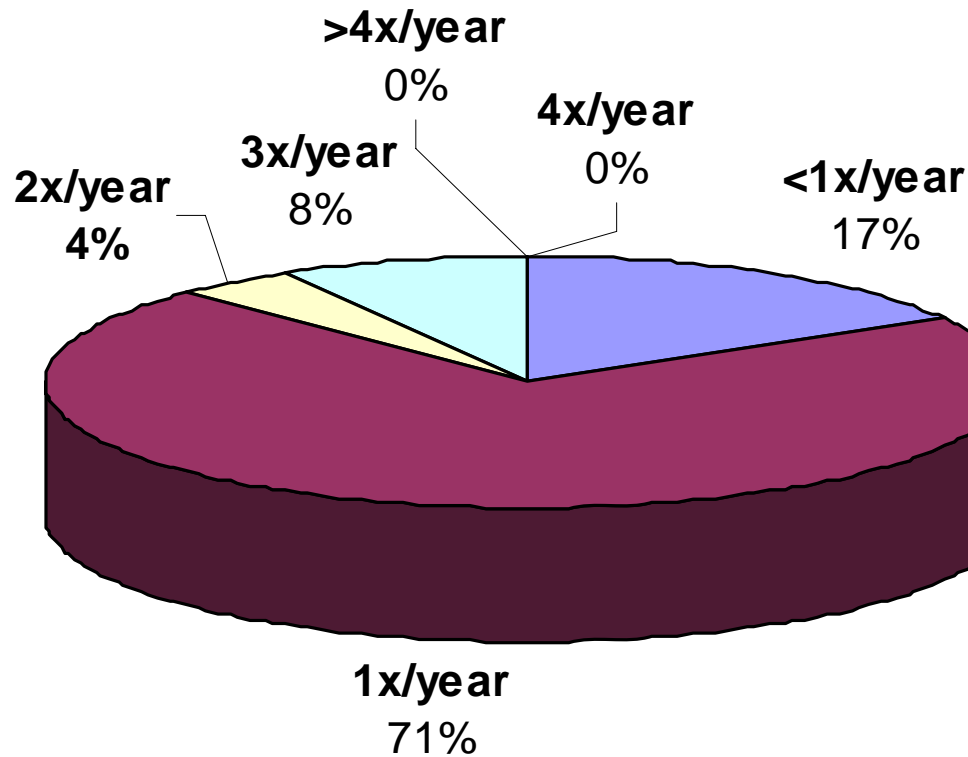


Frequency of Street Sweeping (Commercial/Arterial)*



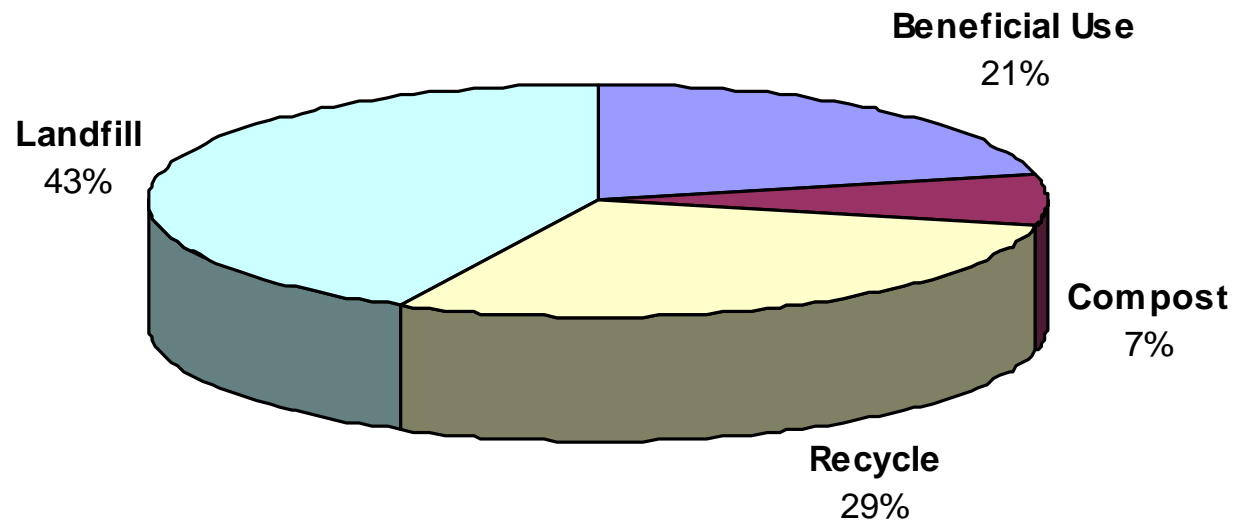
* 70% reporting (26 of 37 year 3 annual reports received)

Frequency of Street Sweeping (Residential)*



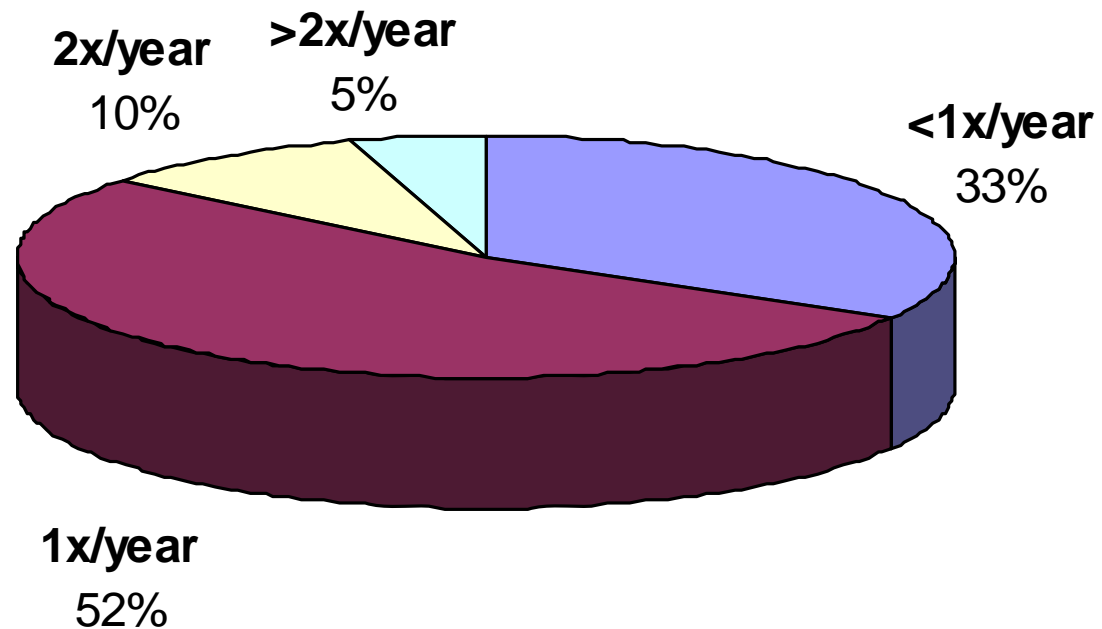
* 65% reporting (24 of 37 year 3 annual reports received)

Street Sweepings Use & Disposal*



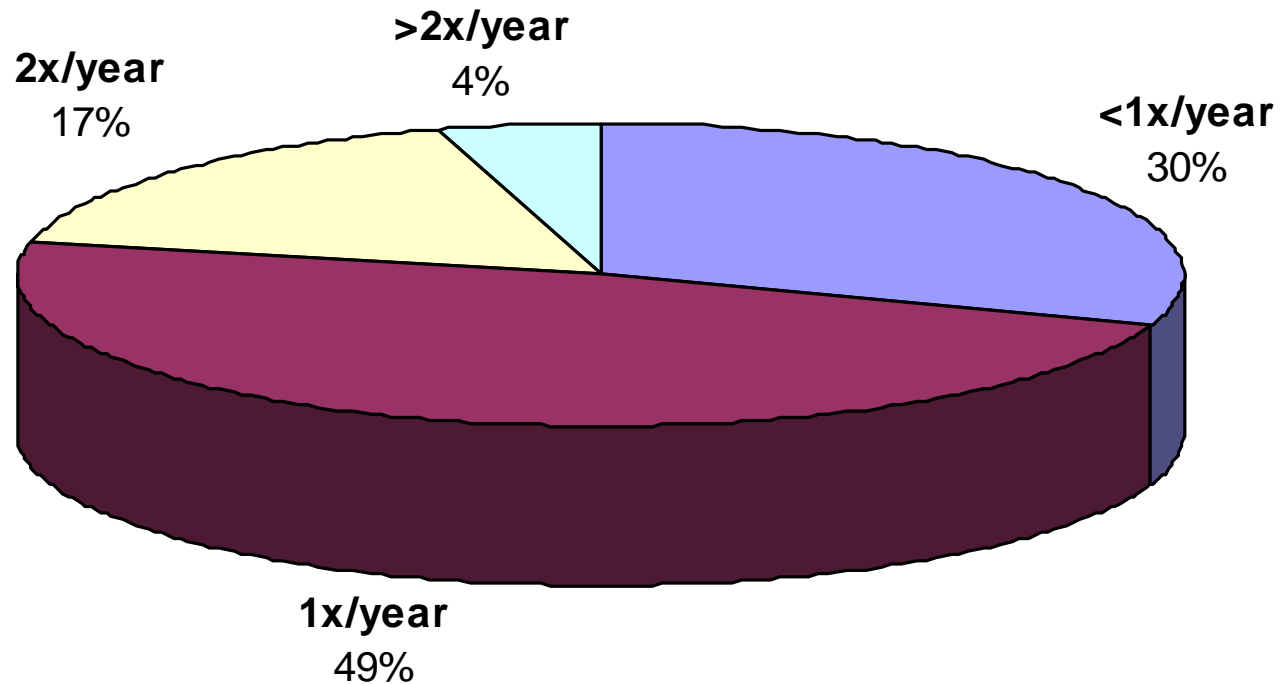
* 38% reporting (14 of 37 year 3 annual reports received)

Frequency of Catch Basin Cleaning (Commercial/Arterial)*



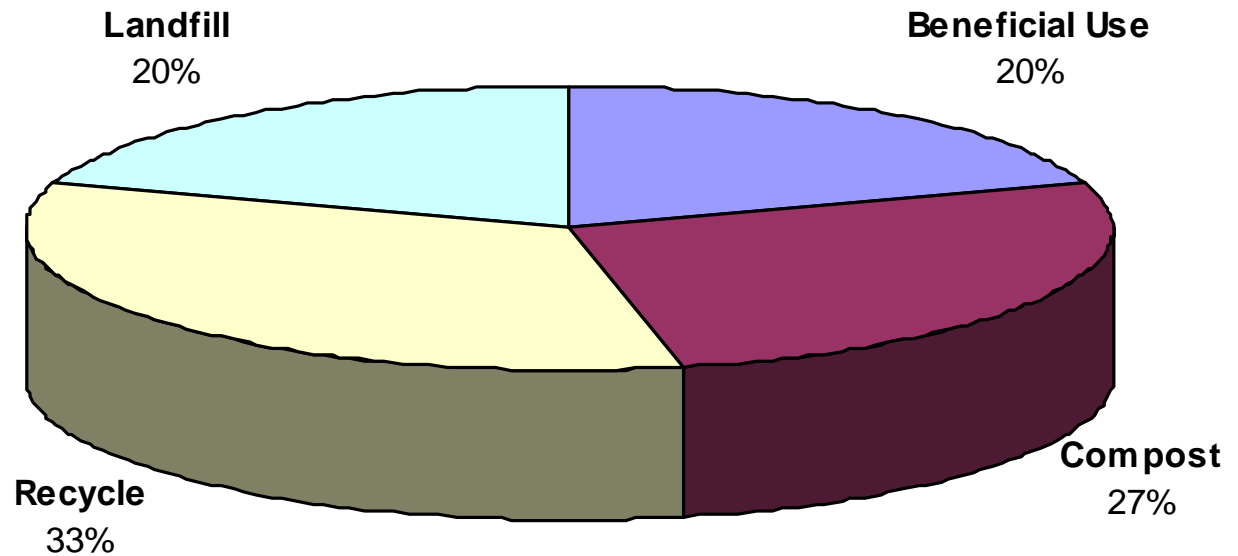
* 57% reporting (21 of 37 year 3 annual reports received)

Frequency of Catch Basin Cleaning (Residential)*



* 62% reporting (23 of 37 year 3 annual reports received)

Catch Basin Screenings Use & Disposal*

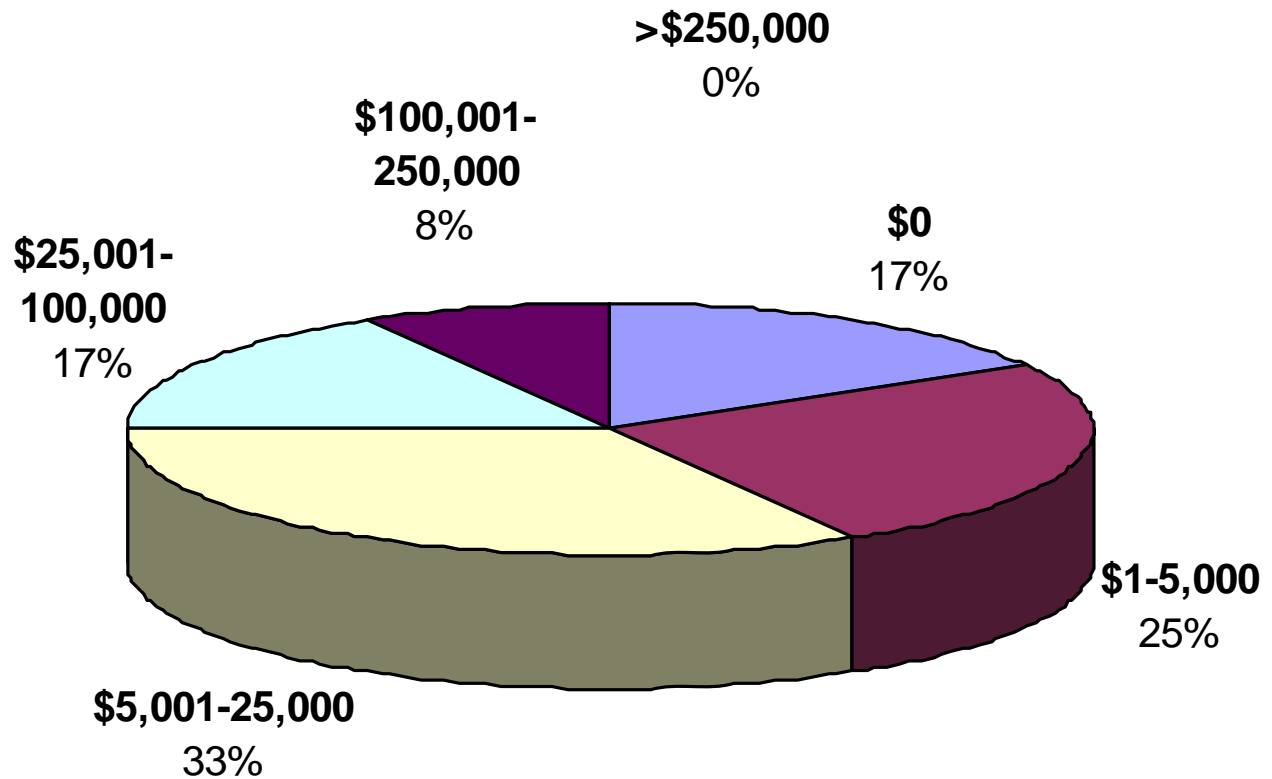


* 41% reporting (15 of 37 year 3 annual reports received)

Deicing Metrics

Method	% utilizing method	% reporting (#/37)
Automatic or Zero-velocity spreaders	41%	46%
Manual control spreaders used	72%	49%
Pre-wetting techniques	25%	43%
Salt pile(s) covered in storage shed(s)	91%	62%
	Year 3	Year 2
Salt:Sand Ratio	1:1	0.7:1

Annual Expenditures*



* 32% reporting (12 of 37 year 3 annual reports received)