



UNITED STATES ENVIRONMENTAL PROTECTION AGENCY

REGION 10

1200 Sixth Avenue, Suite 900
Seattle, Washington 98101-3140

Bryan Herczeg (907) 271-5097

Herczeg.Bryan@epa.gov

- **North Slope***, Northwest Arctic Borough, Fairbanks North Star Borough (joint coverage with Tracy)

Matt LaCroix (907) 271-1480

LaCroix.Matthew@epa.gov

- **Mat-Su Borough***, Kuskokwim River Basin, Denali Borough, SE Alaska permit review (joint coverage with Mark)

Phil North (907) 260-4882 x226

North.Phil@epa.gov

- **Kenai Peninsula Borough***, Bristol Bay, Kodiak, Aleutians, Alaska Peninsula

Tracy DeGering (907) 271-3419

DeGering.Tracy@epa.gov

- **Fairbanks North Star Borough*** (joint coverage with Bryan), Yukon River Basin

Heather Dean (907) 271-3490

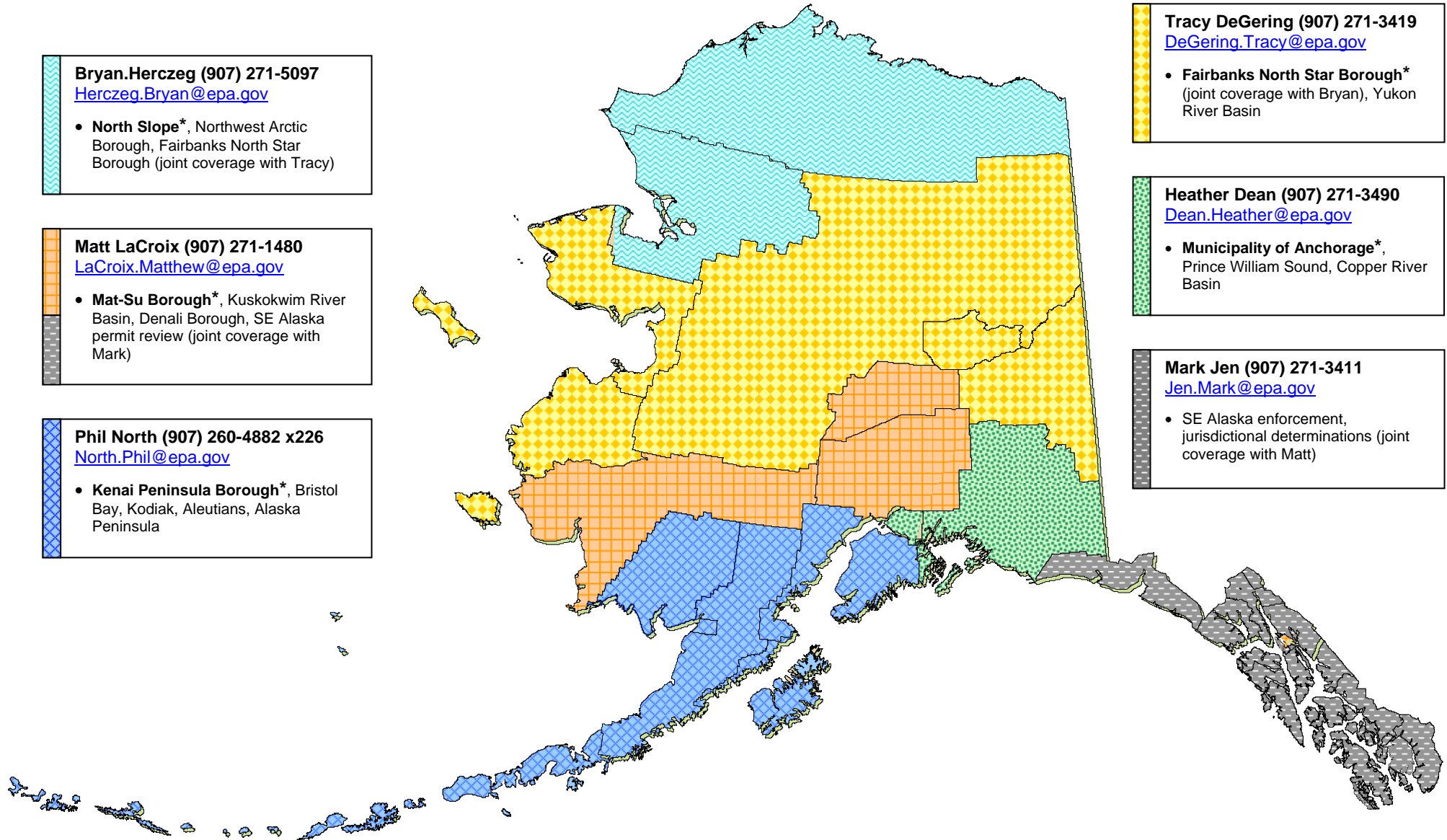
Dean.Heather@epa.gov

- **Municipality of Anchorage***, Prince William Sound, Copper River Basin

Mark Jen (907) 271-3411

Jen.Mark@epa.gov

- SE Alaska enforcement, jurisdictional determinations (joint coverage with Matt)



* = PRIMARY FOCUS AREA

-ASSIGNED COMMUNITIES-

HEATHER DEAN

Anchorage
Birchwood
Bird Creek
Capa Yakataga
Chenega
Chistochina
Chitina
Chugiak
Copper Center
Cordova
Eagle River
Eklutna
Eyak
Gakona
Girdwood
Glenallen
Gulkana
Indian
Kennicott
Kenny Lake
Lower Tonsina
McCarthy
Mendeltna
Mentasta Lake
Nabesna
Paxson
Peters Creek
Portage
Slana
Tatitlek
Tazlina
Tonsina
Valdez
Whittier

TRACY DEGERING

Alakanuk
Alatna

(continued)

Alcan
Allakaket
Anvik
Arctic Village
Beaver
Bettles
Big Delta
Birch Creek
Boundary
Brevig Mission
Central
Chalkyitsik
Chefornak
Chena Hot Springs
Chevak
Chicken
Circle
Circle Hot Springs
Coldfoot
Delta Junction
Diomedea
Dot Lake
Dry Creek
Eagle
Eagle Village
Elim
Emmonak
Ester
Evansville
Fairbanks
Fort Yukon
Fox
Galena
Gambell
Golovin
Grayling
Healy Lake
Holy Cross
Hooper Bay
Hughes
Huslia

(continued)

Iditarod
Kaltag
Kotlik
Koyuk
Koyukuk
Livengood
Manley Hot Springs
Marshall
Mekoryuk
Minto
Mountain Village
Nenana
Newtok
Nightmute
Nome
North Pole
Northway
Northway Junction
Nulato
Nunam Iqua
Ohogamiut
Ophir
Pilot Station
Pitka's Point
Rampart
Ruby
Russian Mission
Savoonga
Scammon Bay
Shageluk
Shaktoolik
Shishmaref
Solomon
St. Mary's
St. Michael
Stebbins
Stevens Village
Tanacross
Tanana
Teller
Tetlin

(continued)

Tetlin Junction
Tok
Tununak
Unalakleet
Venetie
Wales
White Mountain
Wiseman

BRYAN HERCZEG

Ambler
Anaktuvuk Pass
Atkasuk
Barrow
Buckland
Candle
Deadhorse
Deering
Kaktovik
Kiana
Kivalina
Kobuk
Kotzebue
Noatak
Noorvik
Nuiqsut
Point Hope
Point Lay
Prudhoe Bay
Selawik
Shungnak
Wainwright

MATTHEW LACROIX

Akiachak
Akiak
Anderson
Aniak
Atmautluak

Matthew LaCroix
(continued)

Bethel
Big Lake
Chickaloon
Chuathbaluk
Crooked Creek
Flat
Georgetown
Goodnews Bay
Healy
Houston
Kasigluk
Kipnuk
Knik
Kongiganak
Kwethluk
Kwigillingok
Lime Village
Lower Kalskag
McGrath
McKinley Park
Medfra
Napaimiut
Napakiak
Napaskiak
Nikolai
Nunapitchuk
Oscarville
Palmer
Petersville
Platinum
Quinhagak
Red Devil
Skwetna
Sleetmute
Stony River
Sutton
Takotna
Talkeetna
Telida
Toksook Bay

(continued)

Tuluksak
Tuntutuliak
Upper Kalskag
Wasilla
Willow

MATTHEW LACROIX / MARK JEN

*JOINT COVERAGE OF SE AK

- MATT: PERMIT REVIEW
- MARK: ENFORCEMENT, JD'S

Angoon
Coffman Cove
Craig
Cube Cove
Douglas
Edna Bay
Elfin Cove
Excursion Inlet
Gustavus
Haines
Hobart Bay
Hollis
Hoonah
Hydaburg
Hyder
Juneau
Kake
Kasaan
Ketchikan
Klawock
Klukwan
Kupreanof
Lutak
Metlakatla
Meyers Chuck
Mosquito Lake
Mud Bay
Naukati Bay
Pelican

(continued)

Petersburg
Point Baker
Port Alexander
Port Protection
Saxman
Sitka
Skagway
Tenakee Springs
Thom's Place
Thorne Bay
Whale Pass
Whitestone Logging
Camp
Wrangell
Yakutat

PHIL NORTH

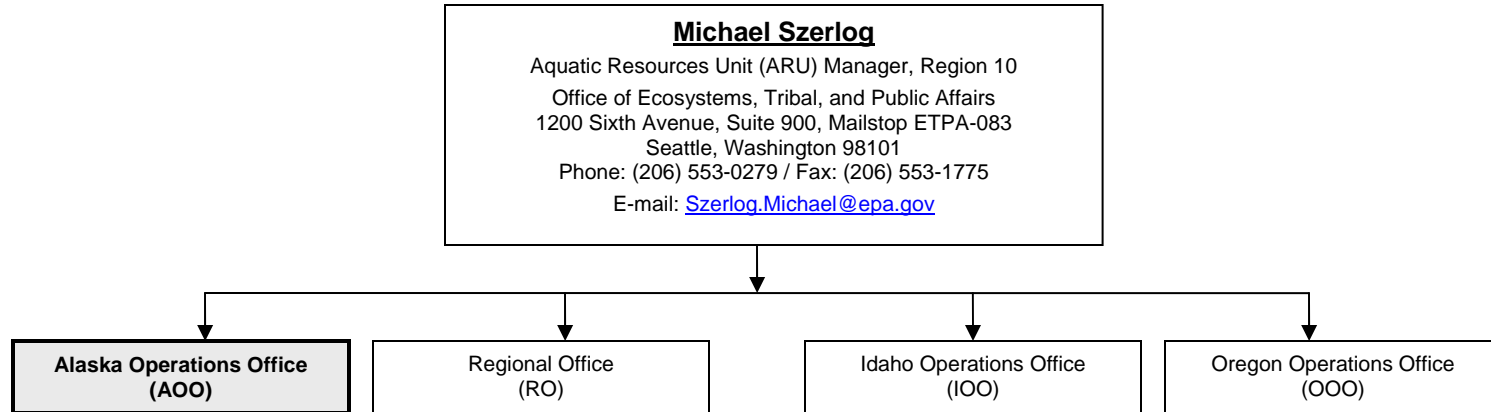
Akutan
Aleknagik
Anchor Point
Chignik
Chignik Lagoon
Chignik Lake
Clam Gulch
Clarks Point
Cold Bay
Cooper Landing
Dillingham
Egegik
Ekuk
Ekwok
False Pass
Homer
Hope
Igiugig
Iliamna
Ivanof Bay
Kachemak
Kasilof
Kenai

(continued)

King Cove
King Salmon
Kokhanok
Koliganek
Levelock
Manokotak
Moose Pass
Naknek
Nanwalek
Nelson Lagoon
New Stuyahok
Newhalen
Nikiski
Nikolaevsk
Nikolski
Ninilchik
Nondalton
Pedro Bay
Perryville
Pilot Point
Port Aslworth
Port Graham
Port Heiden
Port Moller
Portage Creek
Saint George
Saint Paul
Salamatof
Sand Point
Seldovia
Seward
Soldotna
South Naknek
Togiak
Twin Hills
Tyonek
Ugashik
Unalaska



**UNITED STATES ENVIRONMENTAL PROTECTION AGENCY
REGION 10**
1200 Sixth Avenue, Suite 900
Seattle, Washington 98101-3140



Alaska Operations Office Staff

<p>Heather Dean Environmental Scientist (907) 271-3490 Dean.Heather@epa.gov 222 W. 7th Ave, Rm 537 Box #19, (AOO/A) Anchorage, AK 99513-7588 Fax: (907) 271-3424</p> <ul style="list-style-type: none"> • Wetlands & watershed issues SC Alaska (policy, regulatory, mitigation and monitoring issues) • Wetlands Enforcement • 2009 Priority Watershed – Anchorage Bowl • State & Region 10 Lead for Jurisdictional Determinations 	<p>Tracy DeGering Environmental Protection Specialist (907) 271-3419 DeGering.Tracy@epa.gov 222 W. 7th Ave, Rm 537 Box #19, (AOO/A) Anchorage, AK 99513-7588 Fax: (907) 271-3424</p> <ul style="list-style-type: none"> • Wetlands & watershed issues in Interior Alaska (policy, regulatory, mitigation and monitoring issues) • Wetlands Enforcement • 2009 Priority Watershed – Chena & Tanana Subwatersheds of Fairbanks 	<p>Bryan Herczeg Biologist (907) 271-5097 Herczeg.Bryan@epa.gov 222 W. 7th Ave, Rm 537 Box #19, (AOO/A) Anchorage, AK 99513-7588 Fax: (907) 271-3424</p> <ul style="list-style-type: none"> • Wetlands & watershed issues in Northern Interior Alaska (policy, regulatory, mitigation and monitoring issues) • Wetlands Enforcement • 2009 Priority Watershed – Chena & Tanana Subwatersheds of Fairbanks 	<p>Mark Jen Environmental Scientist (907) 271-3411 Jen.Mark@epa.gov 222 W. 7th Ave, Rm 537 Box #19, (AOO/A) Anchorage, AK 99513-7588 Fax: (907) 271-3424</p> <ul style="list-style-type: none"> • Wetlands Enforcement in SE Alaska • Jurisdictional Determinations • 2009 Priority Watershed – SE Alaska 	<p>Matt LaCroix Biologist (907) 271-1480 LaCroix.Matthew@epa.gov 222 W. 7th Ave, Rm 537 Box #19, (AOO/A) Anchorage, AK 99513-7588 Fax: (907) 271-3424</p> <ul style="list-style-type: none"> • Wetlands & watershed issues in Mat-Su Borough & SE Alaska (policy, regulatory, mitigation and monitoring issues) • Wetlands Enforcement in Mat-Su Borough • 2009 Priority Watershed – Lower Susitna River 	<p>Phil North Aquatic Ecologist (907) 260-4882 x226 North.Phil@epa.gov Kenai River Center 514 Funny River Rd (AOO/K) Soldotna, AK 99669 Fax: (907) 260-5992</p> <ul style="list-style-type: none"> • Wetlands & watershed issues in SW Alaska (policy, regulatory, mitigation and monitoring issues) • Wetlands Enforcement • 2009 Priority Watershed – Lower Kenai Peninsula • CWA Section 404 State Mining Coordinator
---	---	---	--	--	---