



UNITED STATES ENVIRONMENTAL PROTECTION AGENCY
REGION 10

1200 Sixth Avenue, Suite 900
Seattle, Washington 98101-3140

Linda Storm (206) 553-6384
Storm.Linda@epa.gov

- **WA:** Clallum, Grays Harbor, Jefferson, Kitsap, Kittitas, Lewis, Mason, Pacific, Pierce, Thurston, and Yakima Counties

Krista Rave-Perkins (206) 553-6686
Rave-Perkins.Krista@epa.gov

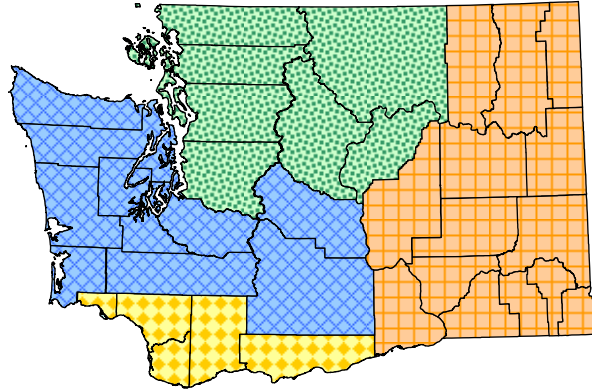
- **WA:** Chelan, Douglas, Island, King, Okanogan, San Juan, Skagit, Snohomish, and Whatcom Counties

Yvonne Vallette (503) 326-2716
Vallette.Yvonne@epa.gov

- **WA:** Clark, Cowitz, Klickitat, Skamania, and Wahkiakum Counties
- **OR:** Baker, Benton, Clatsop, Columbia, Crook, Grant, Jefferson, Klamath, Lincoln, Linn, Malheur, Marion, Tillamook, Union, Willowa, and Wheeler Counties

Tracie Nadeau (503) 326-3685
Nadeau.Tracie@epa.gov

- **OR:** Clackamas, Coos, Curry, Deschutes, Douglas, Gilliam, Harney, Hood, Jackson, Josephine, Lake, Lane, Morrow, Multnomah, Polk, Sherman, Umatilla, Wasco, Washington, and Yamhill Counties

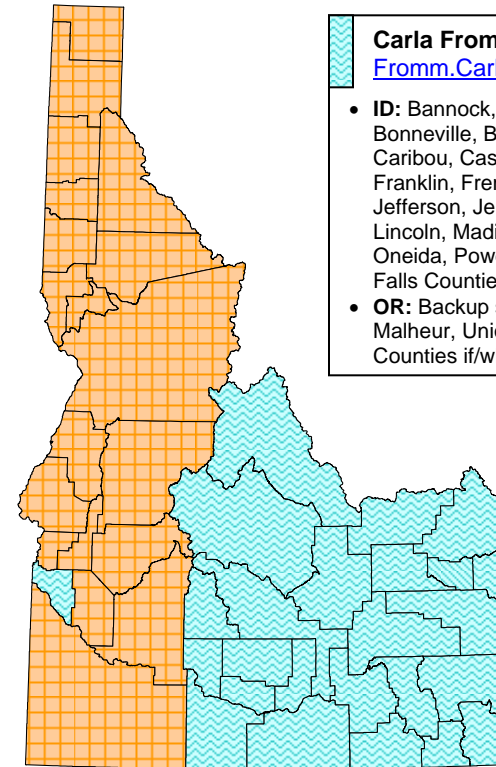
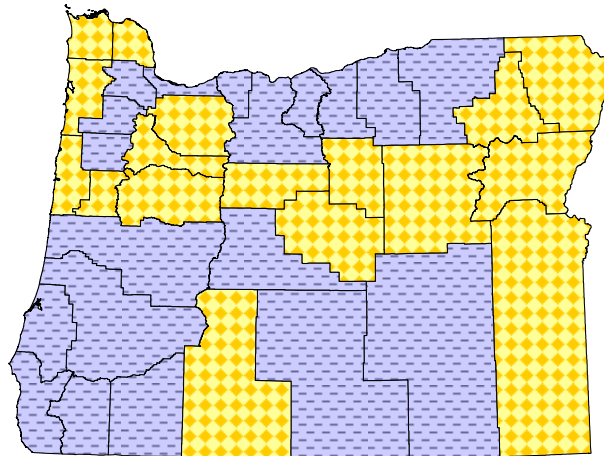


John Olson (208) 378-5756
Olson.John@epa.gov

- **WA:** Adams, Asotin, Benton, Columbia, Ferry, Franklin, Garfield, Grant, Lincoln, Pend Oreille, Spokane, Stevens, Walla Walla, and Whitman Counties
- **ID:** Ada, Adams, Benewah, Boise, Bonner, Boundary, Clearwater, Elmore, Gem, Idaho, Kootenai, Latah, Lewis, Nez Perce, Owyhee, Payette, Shoshone, Valley, and Washington Counties

Carla Fromm (208) 378-5755
Fromm.Carla@epa.gov

- **ID:** Bannock, Bear, Bingham, Blaine, Bonneville, Butte, Camas, Canyon, Caribou, Cassia, Clark, Custer, Franklin, Fremont, Gooding, Jefferson, Jerome, Lake, Lemhi, Lincoln, Madison, Minidoka, Oneida, Power, Teton, and Twin Falls Counties
- **OR:** Backup support for Baker, Malheur, Union, and Willowa Counties if/when appropriate

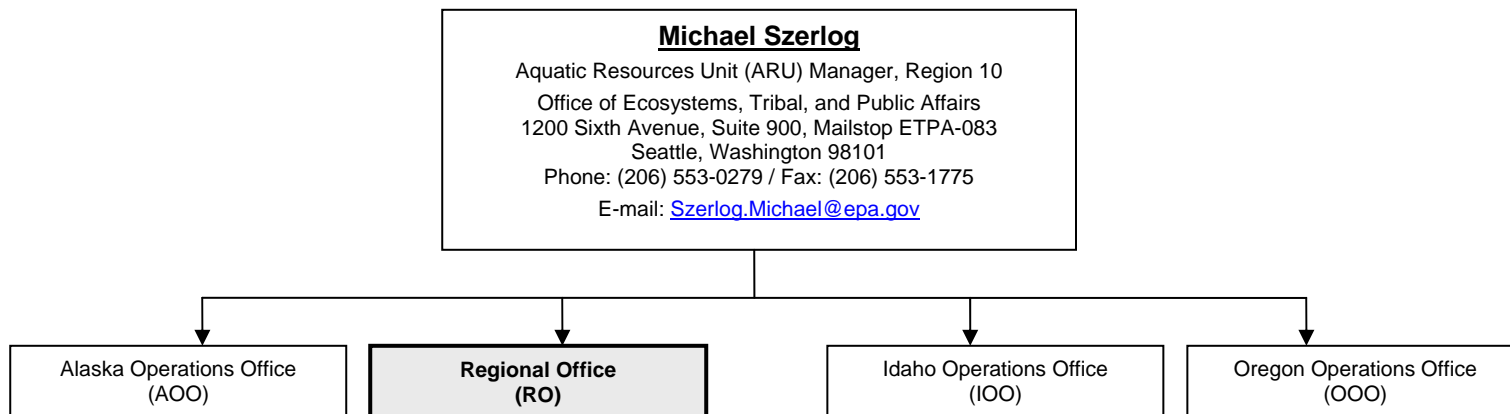


AQUATIC RESOURCES UNIT, REGIONAL (WA), OREGON, AND IDAHO OPERATIONS OFFICES
GEOGRAPHIC & PROGRAM RESPONSIBILITIES

(UPDATED: 1/20/2009)



UNITED STATES ENVIRONMENTAL PROTECTION AGENCY
REGION 10
1200 Sixth Avenue, Suite 900
Seattle, Washington 98101-3140



Regional Office Staff

Rebecca Chu
Biologist
(206) 553-1774
Chu.Rebecca@epa.gov
1200 Sixth Ave, ETPA-083
Seattle, Washington 98101
Fax: (206) 553-1775

- Clean Water Act Section 404 (Wetlands) Enforcement Coordination for Alaska, Idaho, Oregon, and Washington

Amy Le'Feat
Office Manager
(206) 553-1918
LeFeat.Amy@epa.gov
1200 Sixth Ave, ETPA-083
Seattle, Washington 98101
Fax: (206) 553-1775

- Administrative Support
- Records Management
- Enforcement Support

Krista Rave-Perkins
Environmental Protection Specialist
(206) 553-6686
Rave-Perkins.Krista@epa.gov
1200 Sixth Ave, ETPA-083
Seattle, Washington 98101
Fax: (206) 553-1775

- Wetlands & watershed issues in Washington (policy, regulatory, mitigation and monitoring issues)
- Wetlands Enforcement
- 2009 Priority Watershed - Georgia Basin

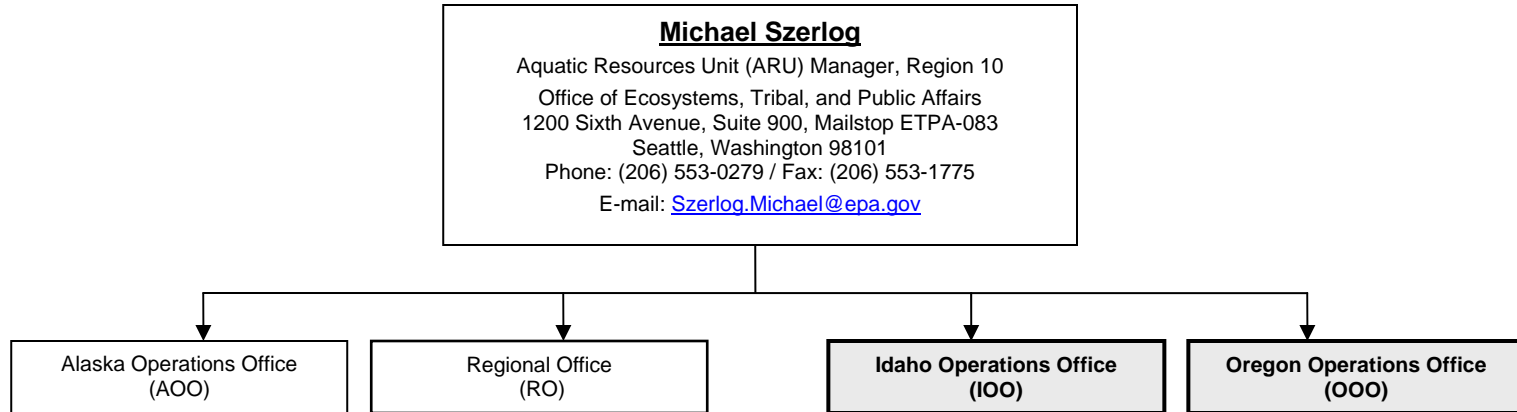
Linda Storm
Ecologist
(206) 553-6384
Storm.Linda@epa.gov
1200 Sixth Ave, ETPA-083
Seattle, Washington 98101
Fax: (206) 553-1775

- Wetlands & watershed issues in Washington (policy, regulatory, mitigation and monitoring issues)
- Wetlands Enforcement
- Regional Jurisdictional Lead for Washington State
- 2009 Priority Watershed – Lower Chehalis and Grays Harbor
- Wetland Delineation & Lead for National Wetland Plant Indicator Status Updates

VACANT
Regional Wetland Ecologist
(206) 553-####
[Last.First@epa.gov](mailto>Last.First@epa.gov)
1200 Sixth Ave, ETPA-083
Seattle, Washington 98101
Fax: (206) 553-1775



UNITED STATES ENVIRONMENTAL PROTECTION AGENCY
REGION 10
1200 Sixth Avenue, Suite 900
Seattle, Washington 98101-3140



Idaho Operations Office Staff

Carla Fromm
Biologist
(208) 378-5755
Fromm.Carla@epa.gov
1435 North Orchard
Boise, ID 83706
Fax: (208) 378-5744

- Wetlands & watershed issues in Idaho (policy, regulatory, mitigation and monitoring issues)
- Wetlands Enforcement
- NPDES for Aquaculture in Idaho
- 2009 Priority Watershed – Upper Salmon

John Olson
Ecologist
(208) 378-5756
Olson.John@epa.gov
1435 North Orchard
Boise, ID 83706
Fax: (208) 378-5744

- Wetlands & watershed issues in Idaho & Washington (policy, regulatory, mitigation and monitoring issues)
- Wetlands Enforcement
- Backup Regional Wetland Coordinator
- Regional Jurisdictional Lead for Idaho
- 2009 Priority Watershed – Pend Oreille Lake

Oregon Operations Office Staff

Tracie Nadeau
Ecologist
(503) 326-3685
Nadeau.Tracie@epa.gov
805 SW Broadway, Suite 500
Portland, OR 97205
Fax: (503) 326-3399

- Wetlands & watershed issues in Oregon (policy, regulatory, mitigation and monitoring issues)
- Wetlands Enforcement
- Lead, Oregon Streamflow Duration Assessment Method
- 2009 Priority Watershed - Middle Columbia-Hood

Yvonne Vallette
Biologist
(503) 326-2716
Vallette.Yvonne@epa.gov
805 SW Broadway, Suite 500
Portland, OR 97205
Fax: (503) 326-3399

- Wetlands & watershed issues in Oregon & Washington (policy, regulatory, mitigation and monitoring issues)
- Wetlands Enforcement
- Regional Jurisdictional Lead for Oregon
- NEPA lead for transportation, ports & energy projects in Oregon
- Program manager for Lower Columbia River National Estuary Program
- 2009 Priority Watershed – Tualatin Valley