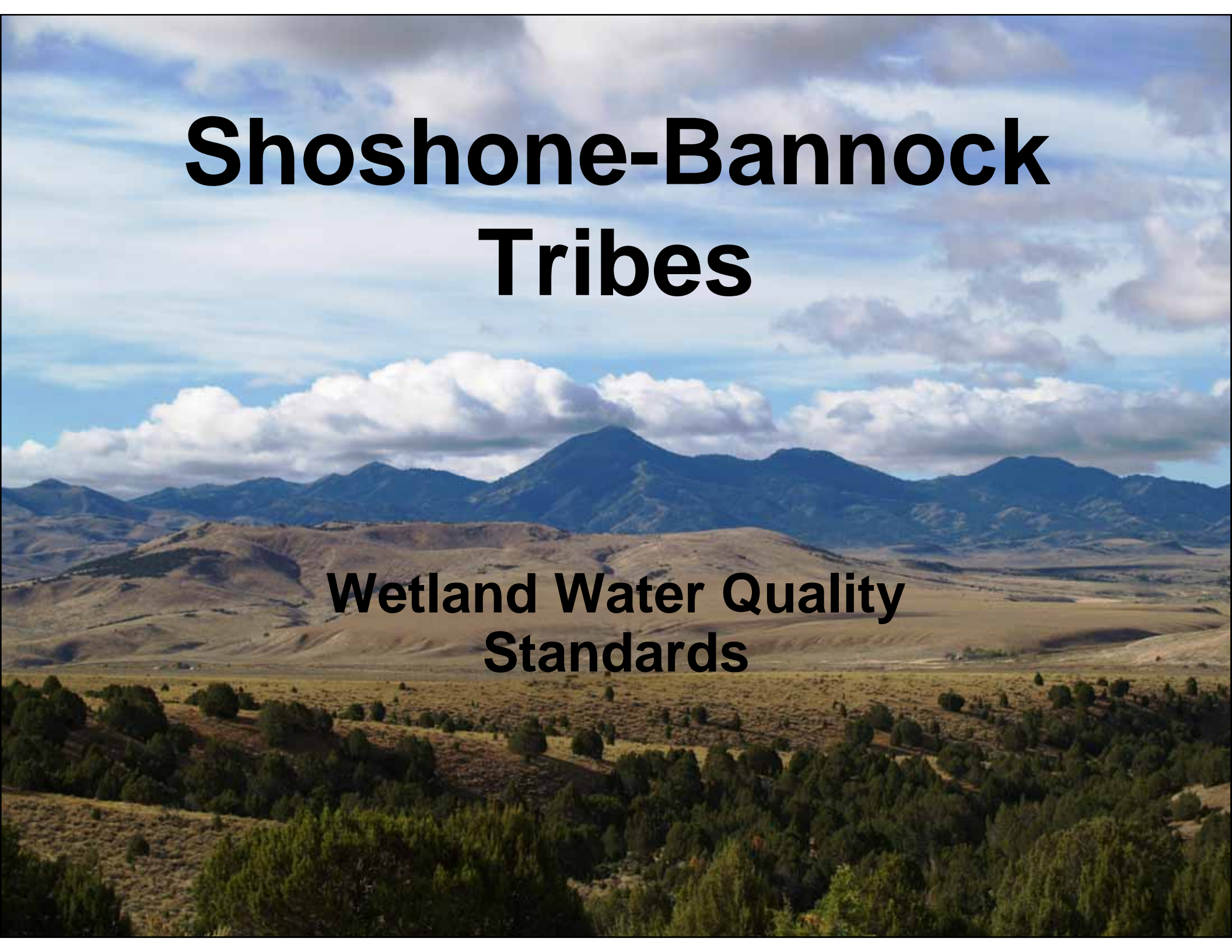


Shoshone-Bannock Tribes

**Wetland Water Quality
Standards**





Spokane

Washington

Montana

Butte

Oregon

Idaho

Boise

Wyoming

California

Nevada

Utah

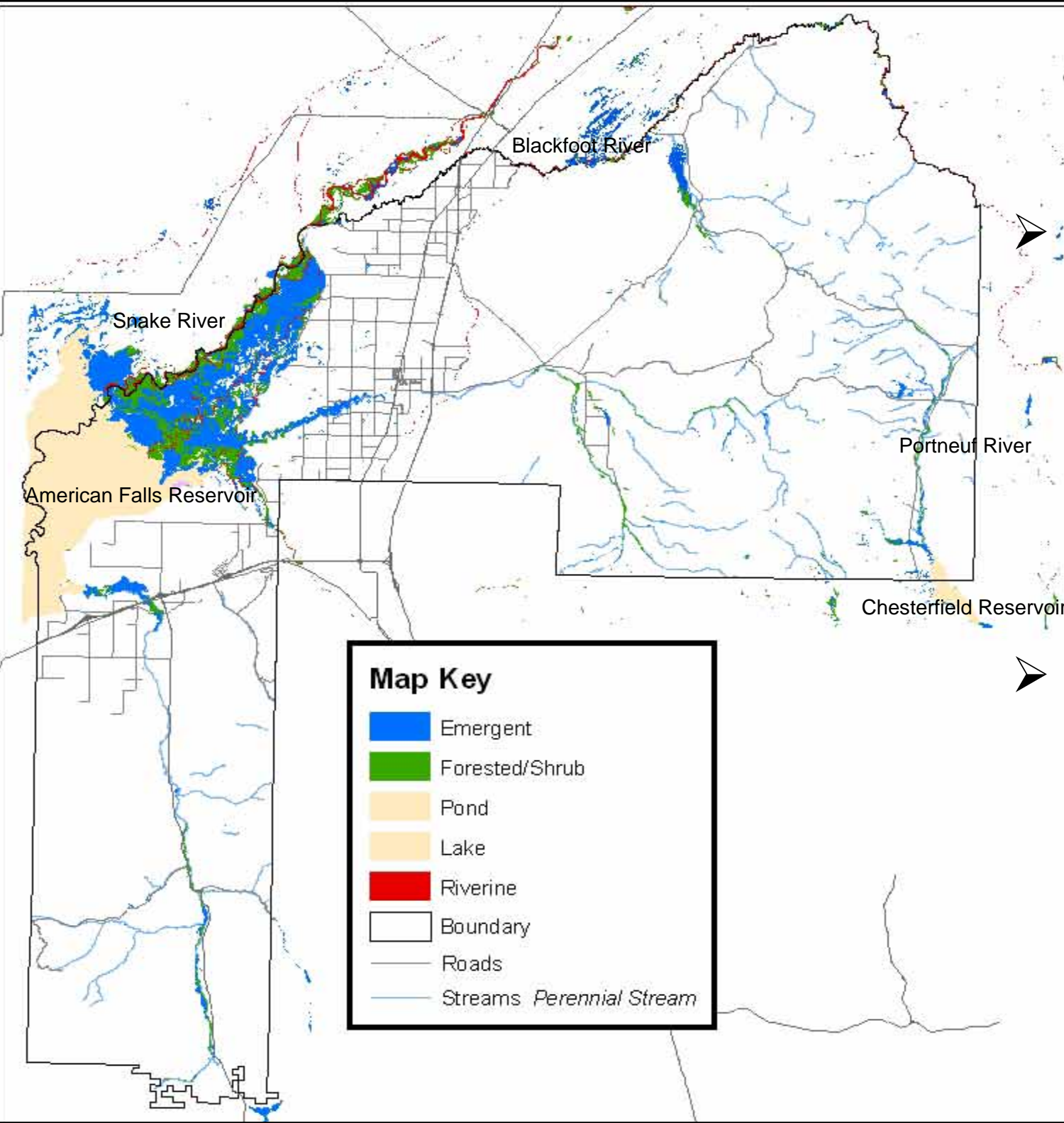
I15

I86

Pocatello

Albers Projection
Longitude: 111.061111111111
Latitude: 43.833333333333
Datum: NAD83





➤ The Blackfoot and Snake River, form the Northern boundary of the Reservation.

➤ Wetlands are located primarily along Riparian corridors.



McTucker Island

The "Bottoms"

2.57 mi

© 2009 Google
© 2009 Europa Technologies
Image USDA Farm Service Agency

© 2009 Google

Imagery Date: Jun 16, 2004

43°01'21.76" N 112°34'07.60" W elev 4372 ft

Eye alt 51186 ft

Cultural Importance of the Bottoms

- Historical wintering site
 - Archeological site dating 2,000 – 3,000 BC
- Important cultural resource today
 - Medicinal and cultural use of native vegetation





Why Wetland Water Quality Standards (WWQS)?

- To Protect and enhance wetlands, specifically “The Bottoms”

WWQS Provide Protection of Resources

- WWQS provide benchmark standards
- Create appropriate foundation for enhancing Tribal wetland resources
- Strengthen 401 certification process

The Creation of SBT-WWQS

- We did not re-invent the wheel
- Used existing State and Tribal WQS as templates



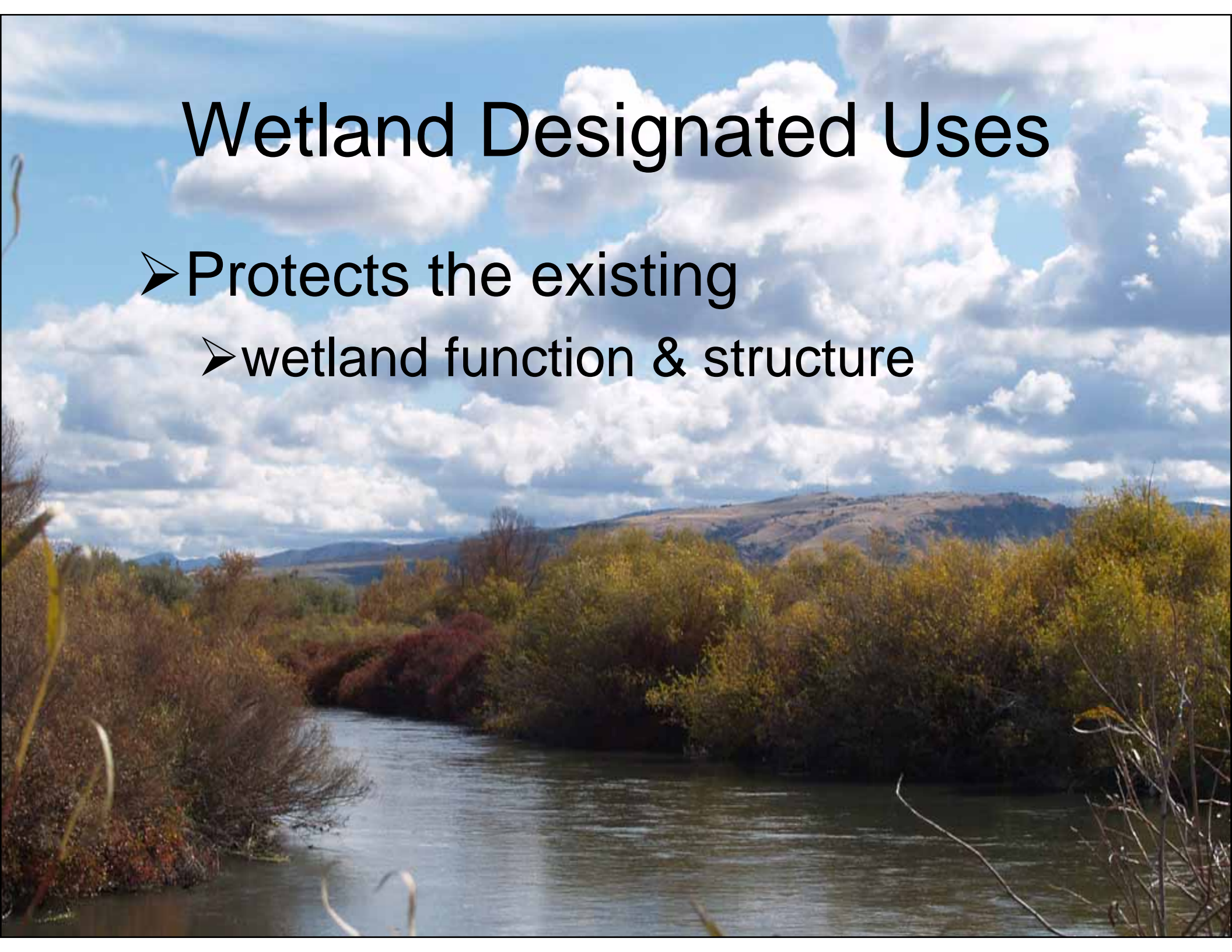
Elements of Wetland - WQS

A photograph of a river flowing through a lush, green wetland area. The river is in the foreground, with water that is slightly turbid. The banks are covered in dense, tall grasses and other vegetation. In the background, there is a hillside with more vegetation and some trees. The overall scene is a natural, undisturbed wetland environment.

- Wetland designated use
- Wetland Criteria
- Anti-degradation policy

Wetland Designated Uses

- Protects the existing
 - wetland function & structure



Wetland Criteria

- All wetlands, (not constructed) are subject to WQS criteria.
- General criteria
- Narrative criteria

Three-tiered Anti-degradation Policy

- Maintain existing use of all waters
- Designated high quality waters
- Designated outstanding resource waters

Funding

- **EPA Wetlands Program
Development Grant**

Future Actions

A photograph of a wetland area. In the foreground, there is a small stream flowing through a field of tall green grasses and yellow wildflowers. The background is filled with dense green trees and shrubs under a bright sky.

- **Ambient wetland assessment criteria included in the WQS.**
- **Approval of WQS**

Questions?

Kerrie Mathews

SBT Water Quality Program

(208)239-4588

kmathews@sbttribes.com