

US EPA Region 4 Superfund Working With Region 4 Superfund Sites Files in Google Earth

This tutorial is designed for users new to Google Earth files. EPA Region 4 will continue to update and add more Superfund Sites files in Google Earth format. These files provide an intuitive and interactive way for users to view and explore Region 4 Superfund Sites in a virtual earth environment.

Disclaimer: EPA Region 4 does not promote or support the sole use of Google Earth. Site locations are provided for informational purposes. EPA does not guarantee the accuracy or completeness of the data. EPA is not responsible for errors or omissions related to the use of the Google Earth mapping program.

Getting Started

First, you will need to [download Google Earth software](#), which is free to the public, and is compatible with most of the computer operating systems, including Windows XP, Windows VISTA, Mac, and Linux computers.

Second, you will [select and download the Region 4 Superfund Sites files](#), which are free to the public, and will be updated periodically as new data become available.

Once you have Google Earth installed and downloaded the Region 4 Superfund Sites files to your computer, simply double-click on one of the KML files to launch Google Earth and view the Region 4 Superfund Sites through the "eyes" of Google Earth.

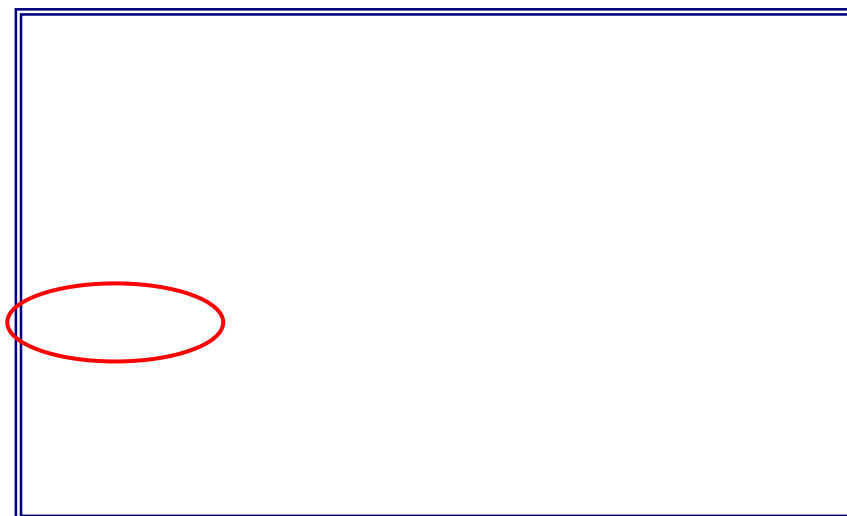
Navigating Region 4 Superfund Sites in Google Earth Environment

Seen in the sample image below for Region 4, Google Earth is composed of a Map Viewer, a top menu bar with various tools, and a left sidebar with three panels for searching a location, adding places and other common layers ("Search" panel, "Places" panel and "Layers" panel).

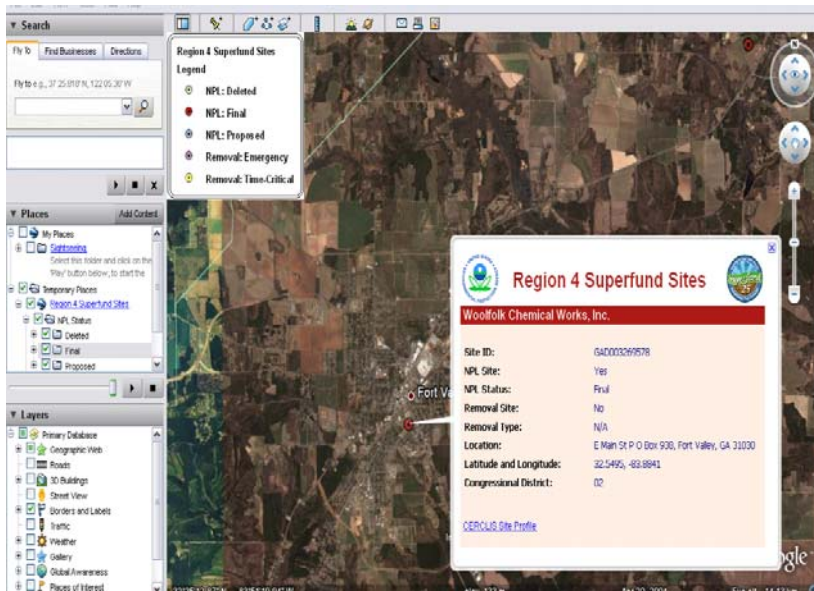
When you open the Region 4 Superfund Sites file in Google Earth, you will automatically see these sites in the "Places" panel in the left sidebar.

Superfund Sites in Region 4 are identified on the map by name and by color. The 3 different colors indicate NPL status – proposed, final, and deleted. In addition to the symbols and labels for the Superfund sites, there are several other information layers available in the "Layers" panel that you can

choose to turn on and off and use as reference layers. If you ever find your map view becomes too crowded with symbols and labels, turning off some of the layers may help clean up the screen view.



Under the Region 4 Superfund Sites, you can expand the menu to see individual site names. Each site name corresponds to an approximate point on the map for each site and is linked to a site



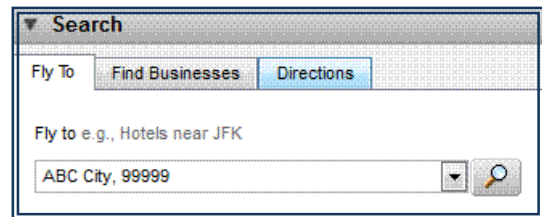
information box. When you click on the site name, the information box will pop up, displaying site-specific information such as a site's NPL status, latitude and longitude coordinates, street address, congressional district, and a link to EPA's site profile, where more detailed site information can be found.

In addition, the [Google Earth User Guide](#) provides many more tutorials and hints for new and advanced users. This includes measuring distances, drawing polygons, using additional layers, such as parcel information, and alternative virtual views.

Three Things You Can Do with Region 4 Superfund Sites Files

(1) Search for sites in an area of interest. You can copy/paste a site's latitude and longitude, address or zip code into the "Search" panel and click on the "Magnifying Glass" button to zoom to the site. Or, you can enter an address or zip code of your choice (e.g., your home or a business) in the "Search" panel, zoom to the location, and find NPL sites in the surroundings. Make sure the "Fly To" tab is selected.

If you want to save a location for future use, you can right-click on a site in the "Places" panel, and select "Add to My Places" (think of it as bookmarks or favorites in Web browsers).



(2) Customize your map. You can take advantage of the drawing tools on the top menu bar, such as "Place Mark," "Polygon," and "Path" to customize a map. Figure 3 illustrates how a yellow property polygon can be added and displayed to illustrate their spatial relations to a site. These added points, lines or polygon features can be saved as places and can also be turned on and off to create various customized map views or prints.

(3) View a site's location in Google Maps. You can switch to Google Maps by clicking on the "Google Map" icon on the top menu bar, or turn on and off different layers available as part of the Google Earth service in the "Layers" panel on the lower-left to see NPL sites' spatial relations with different geographic features, such as streets, schools or businesses.