

Coffeyville, KS

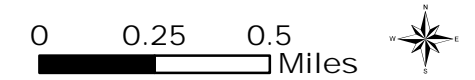
Water Sampling Locations

Fecal Coliform Only
 Sampling Dates: 7/1 - 7/9/2007

Sampling Locations

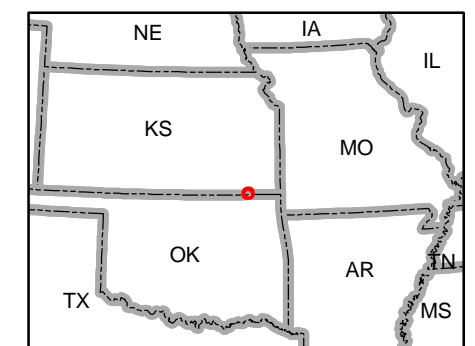
- Water Sample for Fecal Coliform
- Exceeds Public Health Standards for Fecal Coliform (see data results 7/13/07)

- ◆ RMP (Risk Mgmt Plan)
- Streams
- Major Road
- Interstate
- U.S. Highway
- State Highway
- Streets
- Est. Flood Extent 7/3/07

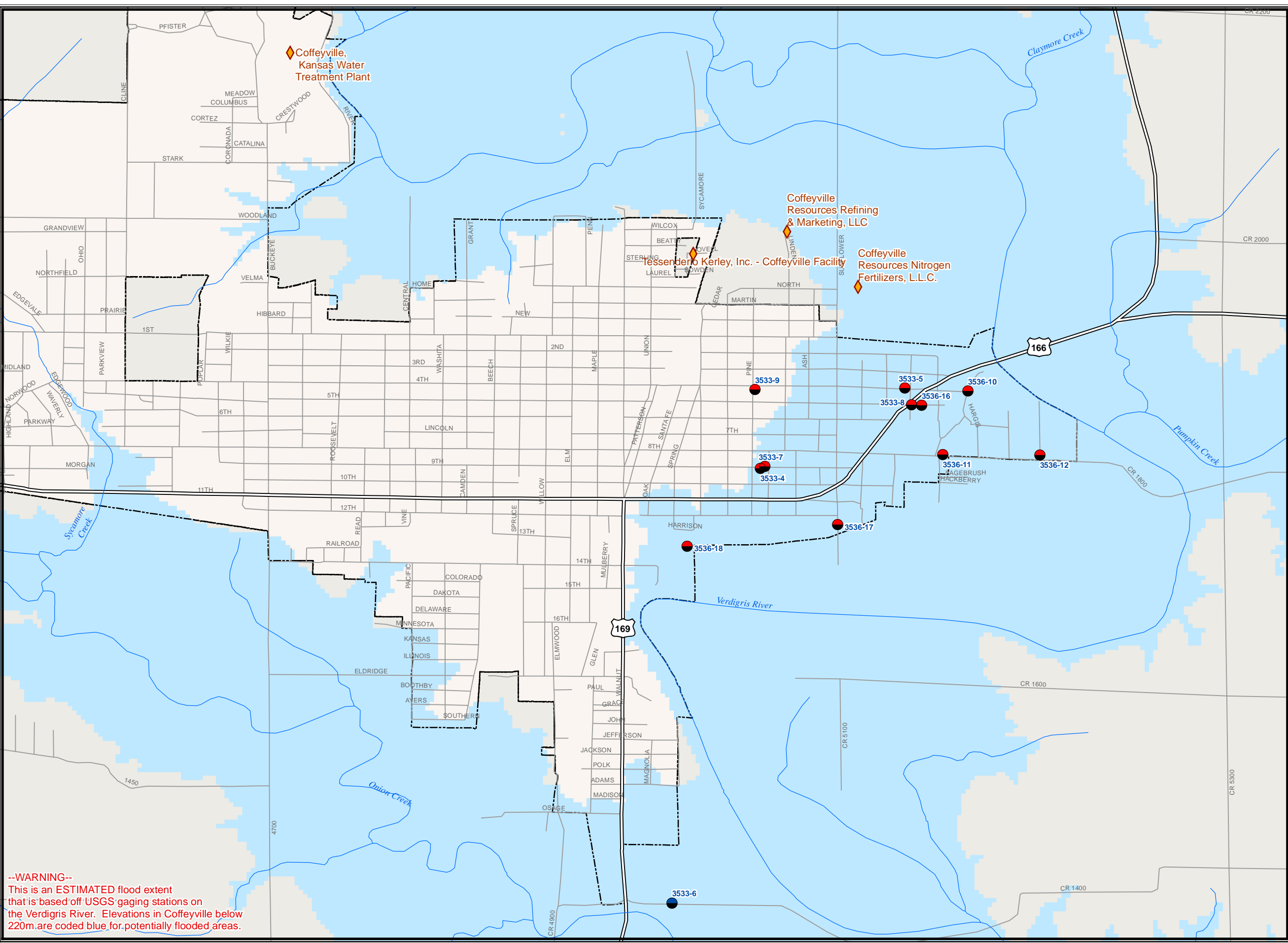


EPA does not warrant the accuracy, completeness, or timeliness of the information shown. The information herein is subject to revision and is not in final form. EPA shall not be liable for any detrimental reliance upon the information shown.

This map has not been submitted to the EPA peer review process



July 13, 2007 12:00



--WARNING--
 This is an ESTIMATED flood extent that is based off USGS gaging stations on the Verdigris River. Elevations in Coffeyville below 220m are coded blue for potentially flooded areas.