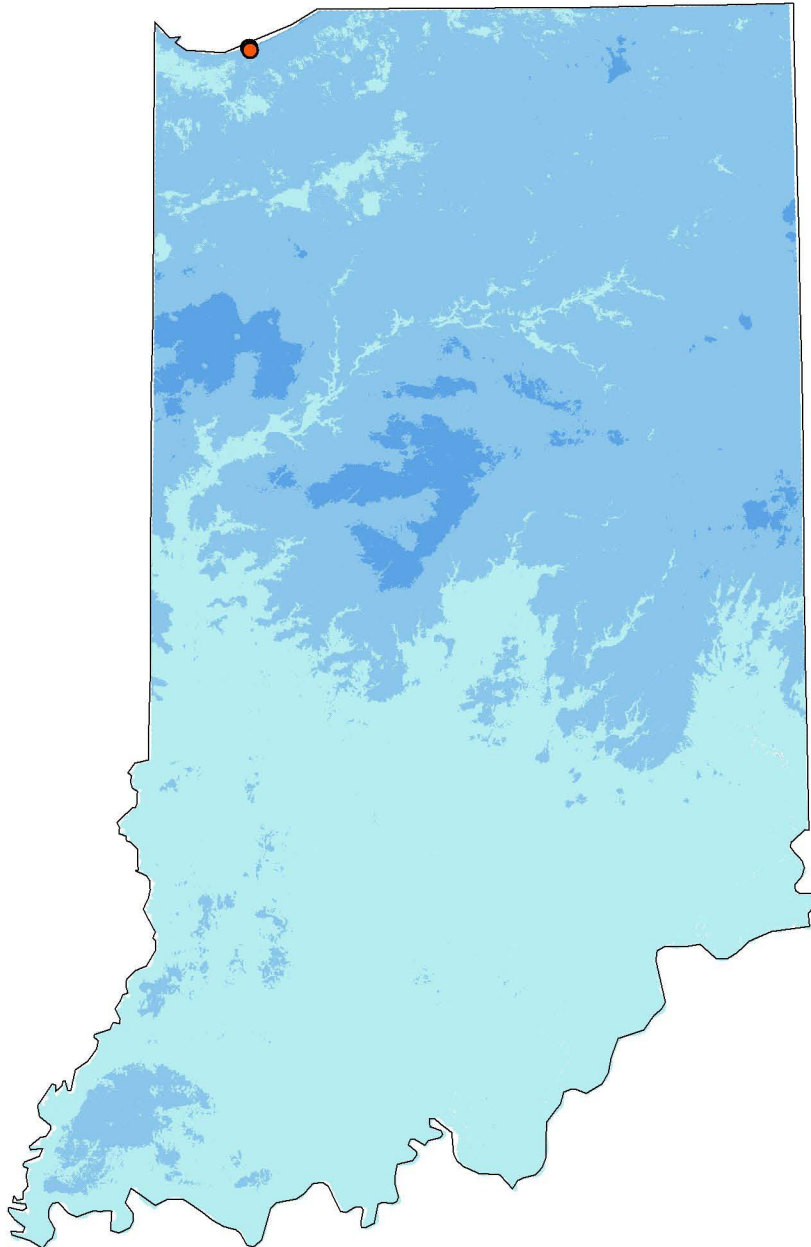


EPA Tracked Sites in Indiana with Community Wind Energy Generation Potential



Wind Resource

Power Class	W/m ²	Resource Potential
1	0-200	Poor
2	200-300	Marginal
3	300-400	Fair
4	400-500	Good
5	500-600	Excellent
6	600-800	Outstanding
7	>800	Superb

EPA Tracked Sites

- Abandoned Mine Land
- Brownfield
- RCRA
- Federal Superfund
- Non-Federal Superfund

Screening Criteria

- Wind power class of 3 or greater, measured at 50m above ground
- Property size between 100 and 1,999 acres
- Distance to graded roads of 25 miles or less
- Distance to transmission lines is not a screening criterion because energy is generally distributed locally

This map was developed by SRA International for the U.S. Environmental Protection Agency (EPA) OSWER Center for Program Analysis. Results are based on site screening criteria adapted from National Renewable Energy Laboratory (NREL) criteria and GIS data provided by NREL and EPA. This map and its associated data are intended to provide a general understanding of the renewable energy potential of EPA tracked sites; additional site specific analysis is required to determine the actual energy generation potential of EPA tracked sites. For further information, please see the accompanying Data Guidelines document, or contact cleanenergy@epa.gov.



U.S. EPA OSWER
CENTER FOR PROGRAM ANALYSIS