

## EDEN NORTH CAROLINA COAL ASH SPILL SURFACE WATER RESULTS

NOTE: The data below represents surface water samples that were collected on March 27, 2014 by EPA START (Team 1). Water sample measurements are in milligrams per liter (mg/L) and/or micrograms per liter (µg/L) for these samples. The data is being compared to EPA ecological risk screening levels (ERSLs) to protect aquatic life in the surface water of the Dan River. Specific qualifiers and footnotes are listed below the summary table. These samples were collected at various locations along the river (refer to map for generalized locations). The detected concentrations in surface water are all below the EPA ERSLs.

Analyte	Ecological Screening Standard for Surface Water Samples <sup>1</sup>		Leaksville Boat Access		DRSS Boat Ramp		Hwy 700	
<b>Sample Information</b>								
Sample ID	-		EDEN-LBA-R-SW-20140403		EDEN-DUKE-L-SW-20140403		EDEN-HW700-C-SW-20140403	
Date	-		04/03/2014		04/03/2014		04/03/2014	
Time	-		1417		1305		1216	
Status	-		Validation Complete		Validation Complete		Validation Complete	
Type	-		Surface Water		Surface Water		Surface Water	
<b>Dissolved metals</b>								
Aluminum	87	µg/L	48.5U	µg/L	10U	µg/L	10U	µg/L
Antimony	5.6	µg/L	5U	µg/L	5U	µg/L	5U	µg/L
Arsenic	10	µg/L	4.5U	µg/L	4.5U	µg/L	0.132J	µg/L
Barium	220	µg/L	17.4	µg/L	17.4	µg/L	17.6	µg/L
Beryllium	0.66	µg/L	0.65U	µg/L	0.65U	µg/L	0.65U	µg/L
Boron	0.36	mg/L	0.141U	mg/L	0.114U	mg/L	0.0989U	mg/L
Cadmium	0.1	µg/L	0.1U	µg/L	0.1U	µg/L	0.1U	µg/L
Calcium	-	-	6,550	µg/L	6,280	µg/L	6,280	µg/L
Chromium	25	µg/L	0.107J	µg/L	0.0959J	µg/L	0.0974J	µg/L
Cobalt	3	µg/L	5U	µg/L	5U	µg/L	5U	µg/L
Copper	3	µg/L	2U	µg/L	2U	µg/L	2U	µg/L
Iron	1,000	µg/L	116	µg/L	134	µg/L	110	µg/L
Lead	0.59	µg/L	0.5U	µg/L	0.5U	µg/L	0.5U	µg/L
Magnesium	-	-	2,430J	µg/L	2,620J	µg/L	2,510J	µg/L
Manganese	200	µg/L	5U	µg/L	18.7	µg/L	12.4	µg/L
Mercury	0.000012	mg/L	0.0002U	mg/L	0.0002U	mg/L	0.0002U	mg/L
Molybdenum	800	µg/L	5U	µg/L	5U	µg/L	5U	µg/L
Nickel	17	µg/L	5U	µg/L	5U	µg/L	5U	µg/L
Potassium	53,000	µg/L	5,000U	µg/L	5,000U	µg/L	5,000U	µg/L
Selenium	5	µg/L	4.5U	µg/L	4.5U	µg/L	4.5U	µg/L
Silver	0.06	µg/L	0.055U	µg/L	0.055U	µg/L	0.055U	µg/L
Sodium	680,000	µg/L	5,000U	µg/L	5,000U	µg/L	5,000U	µg/L
Thallium	0.24	µg/L	0.2U	µg/L	0.2U	µg/L	0.2U	µg/L
Vanadium	27	µg/L	0.241J	µg/L	0.35J	µg/L	0.344J	µg/L
Zinc	39	µg/L	10UJ	µg/L	10UJ	µg/L	10UJ	µg/L

**EDEN NORTH CAROLINA COAL ASH SPILL  
SURFACE WATER RESULTS**

Analyte	Ecological Screening Standard for Surface Water Samples <sup>1</sup>		Leaksville Boat Access		DRSS Boat Ramp		Hwy 700	
<b>Sample Information</b>								
Sample ID	-		EDEN-LBA-R-SW-20140403		EDEN-DUKE-L-SW-20140403		EDEN-HW700-C-SW-20140403	
Date	-		04/03/2014		04/03/2014		04/03/2014	
Time	-		1417		1305		1216	
Status	-		Validation Complete		Validation Complete		Validation Complete	
Type	-		Surface Water		Surface Water		Surface Water	
<b>Total Dissolved Solids</b>								
Total Dissolved Solids	-	-	131	mg/L	1,020	mg/L	67	mg/L
<b>Total Suspended Solids</b>								
Total Suspended Solids	-	-	9	mg/L	10.5	mg/L	12	mg/L
<b>Total Metals</b>								
Aluminum	2,000	µg/L	162	µg/L	136J+	µg/L	168	µg/L
Antimony	5.6	µg/L	5U	µg/L	5U	µg/L	5U	µg/L
Arsenic	10	µg/L	4.5U	µg/L	4.5U	µg/L	4.5U	µg/L
Barium	220	µg/L	20.3	µg/L	18.6	µg/L	19.4	µg/L
Beryllium	0.66	µg/L	0.65U	µg/L	0.65U	µg/L	0.65U	µg/L
Boron	0.36	mg/L	0.148U	mg/L	0.102U	mg/L	0.104U	mg/L
Cadmium	2	µg/L	0.1U	µg/L	0.1U	µg/L	0.1U	µg/L
Calcium	-	-	6,640	µg/L	6,300	µg/L	6,190	µg/L
Chromium	29	µg/L	2.5U	µg/L	2.5U	µg/L	2.5U	µg/L
Cobalt	24	µg/L	5U	µg/L	5U	µg/L	5U	µg/L
Copper	3	µg/L	2U	µg/L	2.5U	µg/L	2U	µg/L
Iron	2,300	µg/L	470	µg/L	509	µg/L	575	µg/L
Lead	0.6	µg/L	0.5U	µg/L	0.5U	µg/L	0.5U	µg/L
Magnesium	-	-	5,000U	µg/L	5,000U	µg/L	5,000U	µg/L
Manganese	200	µg/L	18	µg/L	28.9	µg/L	23.5	µg/L
Mercury	0.000012	mg/L	0.0002U	mg/L	0.0002U	mg/L	0.0002U	mg/L
Molybdenum	-	-	5U	µg/L	5U	µg/L	5U	µg/L
Nickel	17	µg/L	0.312J	µg/L	0.444J	µg/L	0.362J	µg/L
Potassium	53,000	µg/L	5,000U	µg/L	5,000U	µg/L	5,000U	µg/L
Selenium	5	µg/L	4.5U	µg/L	4.5U	µg/L	4.5U	µg/L
Silver	0.06	µg/L	0.05U	µg/L	0.05U	µg/L	0.05U	µg/L
Sodium	680,000	µg/L	5,000U	µg/L	5,000U	µg/L	5,000U	µg/L
Thallium	0.24	µg/L	0.2UJ	µg/L	0.2UJ	µg/L	0.2UJ	µg/L
Vanadium	27	µg/L	0.982J	µg/L	1.07J	µg/L	1.07J	µg/L
Zinc	39	µg/L	10U	µg/L	10U	µg/L	10U	µg/L
<b>Anions</b>								
Bromide	-	-	1U	mg/L	1U	mg/L	1U	mg/L
Chloride	230	mg/L	8.34	mg/L	7.24	mg/L	6.85	mg/L
Sulfate	-	-	4.74	mg/L	5.08	mg/L	4.7	mg/L

## EDEN NORTH CAROLINA COAL ASH SPILL SURFACE WATER RESULTS

Analyte	Ecological Screening Standard for Surface Water Samples <sup>1</sup>		Leaksville Boat Access		DRSS Boat Ramp		Hwy 700	
<b>Sample Information</b>								
Sample ID	-		EDEN-LBA-R-SW-20140403		EDEN-DUKE-L-SW-20140403		EDEN-HW700-C-SW-20140403	
Date	-		04/03/2014		04/03/2014		04/03/2014	
Time	-		1417		1305		1216	
Status	-		Validation Complete		Validation Complete		Validation Complete	
Type	-		Surface Water		Surface Water		Surface Water	
<b>Wet Chemistry</b>								
Alkalinity, Total (As CaCO <sub>3</sub> )	-	-	18.2	mg/L	20.9	mg/L	19.8	mg/L
Hardness, Calcium/Magnesium (As CaCO <sub>3</sub> )	-	-	26.6	mg/L	26.3	mg/L	25.6	mg/L
Organic Carbon, Dissolved	-	-	2.72	mg/L	1.95	mg/L	2.07	mg/L
pH	6.5 - 9.0		std	6.99J	std	6.98J	std	7.07J

Notes

<sup>1</sup> Value obtained from the GL Tier 2 Values; National Recommended Water Quality Criteria; Suter and Tsao (1996); Reference condition for EcoRegion XI (25 percentile); NCDENR State Standards for surface water

°C degrees Celsius

EPA U.S. Environmental Protection Agency

J Value is estimated

J+ Value is estimated with a possible high bias

J- Value is estimated with a possible low bias

µg/L micrograms per liter

mg/L milligrams per liter

std standard

U Analyte was not detected at the listed reporting limit.

**EDEN NORTH CAROLINA COAL ASH SPILL  
SURFACE WATER RESULTS**

Analyte	Ecological Screening Standard for Surface Water Samples <sup>1</sup>		Hwy 700		Hwy 880		Abreu-Grogan Park Boat Dock	
<b>Sample Information</b>								
Sample ID	-		EDEN-HW700-C-SW-20140403-DUP		EDEN-BHB-C-SW-20140403		EDEN-DANIN-R-SW-20140403	
Date	-		04/03/2014		04/03/2014		04/03/2014	
Time	-		1220		1144		1108	
Status	-		Validation Complete		Validation Complete		Validation Complete	
Type	-		Surface Water		Surface Water		Surface Water	
<b>Dissolved metals</b>								
Aluminum	87	µg/L	10U	µg/L	11.8U	µg/L	12U	µg/L
Antimony	5.6	µg/L	5U	µg/L	5U	µg/L	5U	µg/L
Arsenic	10	µg/L	0.145J	µg/L	0.135J	µg/L	0.151J	µg/L
Barium	220	µg/L	18.1	µg/L	16.9	µg/L	19	µg/L
Beryllium	0.66	µg/L	0.65U	µg/L	0.65U	µg/L	0.65U	µg/L
Boron	0.36	mg/L	0.096U	mg/L	0.0981J+	mg/L	0.0964U	mg/L
Cadmium	0.1	µg/L	0.1U	µg/L	0.1U	µg/L	0.1U	µg/L
Calcium	-	-	6,280	µg/L	6,160	µg/L	6,520	µg/L
Chromium	25	µg/L	0.134J	µg/L	0.107J	µg/L	0.133J	µg/L
Cobalt	3	µg/L	5U	µg/L	5U	µg/L	5U	µg/L
Copper	3	µg/L	2U	µg/L	2U	µg/L	2U	µg/L
Iron	1,000	µg/L	141	µg/L	139	µg/L	174	µg/L
Lead	0.59	µg/L	0.5U	µg/L	0.5U	µg/L	0.5U	µg/L
Magnesium	-	-	2,510J	µg/L	2,500J	µg/L	2,570J	µg/L
Manganese	200	µg/L	13.2	µg/L	8.12	µg/L	16.8	µg/L
Mercury	0.000012	mg/L	0.0002U	mg/L	0.0002U	mg/L	0.0002U	mg/L
Molybdenum	800	µg/L	5U	µg/L	5U	µg/L	5U	µg/L
Nickel	17	µg/L	5U	µg/L	5U	µg/L	5U	µg/L
Potassium	53,000	µg/L	5,000U	µg/L	5,000U	µg/L	5,000U	µg/L
Selenium	5	µg/L	4.5U	µg/L	4.5U	µg/L	4.5U	µg/L
Silver	0.06	µg/L	0.055U	µg/L	0.055U	µg/L	0.055U	µg/L
Sodium	680,000	µg/L	5,000U	µg/L	5,000U	µg/L	5,000U	µg/L
Thallium	0.24	µg/L	0.2U	µg/L	0.2U	µg/L	0.2U	µg/L
Vanadium	27	µg/L	0.407J	µg/L	0.403J	µg/L	0.447J	µg/L
Zinc	39	µg/L	10UJ	µg/L	10UJ	µg/L	10UJ	µg/L

**EDEN NORTH CAROLINA COAL ASH SPILL  
SURFACE WATER RESULTS**

Analyte	Ecological Screening Standard for Surface Water Samples <sup>1</sup>		Hwy 700		Hwy 880		Abreu-Grogan Park Boat Dock	
<b>Sample Information</b>								
Sample ID	-		EDEN-HW700-C-SW-20140403-DUP		EDEN-BHB-C-SW-20140403		EDEN-DANIN-R-SW-20140403	
Date	-		04/03/2014		04/03/2014		04/03/2014	
Time	-		1220		1144		1108	
Status	-		Validation Complete		Validation Complete		Validation Complete	
Type	-		Surface Water		Surface Water		Surface Water	
<b>Total Dissolved Solids</b>								
Total Dissolved Solids	-	-	79	mg/L	74	mg/L	76	mg/L
<b>Total Suspended Solids</b>								
Total Suspended Solids	-	-	7	mg/L	7.5	mg/L	7	mg/L
<b>Total Metals</b>								
Aluminum	2,000	µg/L	177	µg/L	201	µg/L	180	µg/L
Antimony	5.6	µg/L	5U	µg/L	5U	µg/L	5U	µg/L
Arsenic	10	µg/L	4.5U	µg/L	4.5U	µg/L	4.5U	µg/L
Barium	220	µg/L	19.6	µg/L	19.9	µg/L	21.1	µg/L
Beryllium	0.66	µg/L	0.65U	µg/L	0.65U	µg/L	0.65U	µg/L
Boron	0.36	mg/L	0.0982U	mg/L	0.108U	mg/L	0.0984U	mg/L
Cadmium	2	µg/L	0.1U	µg/L	0.1U	µg/L	0.1U	µg/L
Calcium	-	-	6,250	µg/L	6,120	µg/L	6,480	µg/L
Chromium	29	µg/L	2.5U	µg/L	2.5U	µg/L	2.5U	µg/L
Cobalt	24	µg/L	5U	µg/L	5U	µg/L	5U	µg/L
Copper	3	µg/L	2U	µg/L	2U	µg/L	2U	µg/L
Iron	2,300	µg/L	590	µg/L	596	µg/L	613	µg/L
Lead	0.6	µg/L	0.5U	µg/L	0.5U	µg/L	0.5U	µg/L
Magnesium	-	-	5,000U	µg/L	5,000U	µg/L	5,000U	µg/L
Manganese	200	µg/L	25.3	µg/L	23.7	µg/L	23.6	µg/L
Mercury	0.000012	mg/L	0.0002U	mg/L	0.0002U	mg/L	0.0002U	mg/L
Molybdenum	-	-	5U	µg/L	5U	µg/L	5U	µg/L
Nickel	17	µg/L	0.348J	µg/L	0.381J	µg/L	0.329J	µg/L
Potassium	53,000	µg/L	5,000U	µg/L	5,000U	µg/L	5,000U	µg/L
Selenium	5	µg/L	4.5U	µg/L	4.5U	µg/L	4.5U	µg/L
Silver	0.06	µg/L	0.05U	µg/L	0.05U	µg/L	0.05U	µg/L
Sodium	680,000	µg/L	5,000U	µg/L	5,000U	µg/L	5,000U	µg/L
Thallium	0.24	µg/L	0.2UJ	µg/L	0.2UJ	µg/L	0.2UJ	µg/L
Vanadium	27	µg/L	1.15J	µg/L	1.31J	µg/L	1.18J	µg/L
Zinc	39	µg/L	10U	µg/L	10U	µg/L	10U	µg/L
<b>Anions</b>								
Bromide	-	-	1U	mg/L	1U	mg/L	1U	mg/L
Chloride	230	mg/L	6.92	mg/L	6.39	mg/L	7.14	mg/L
Sulfate	-	-	4.67	mg/L	4.63	mg/L	4.99	mg/L

## EDEN NORTH CAROLINA COAL ASH SPILL SURFACE WATER RESULTS

Analyte	Ecological Screening Standard for Surface Water Samples <sup>1</sup>		Hwy 700		Hwy 880		Abreu-Grogan Park Boat Dock	
<b>Sample Information</b>								
Sample ID	-		EDEN-HW700-C-SW-20140403-DUP		EDEN-BHB-C-SW-20140403		EDEN-DANIN-R-SW-20140403	
Date	-		04/03/2014		04/03/2014		04/03/2014	
Time	-		1220		1144		1108	
Status	-		Validation Complete		Validation Complete		Validation Complete	
Type	-		Surface Water		Surface Water		Surface Water	
<b>Wet Chemistry</b>								
Alkalinity, Total (As CaCO <sub>3</sub> )	-	-	19.6	mg/L	18.9	mg/L	21.3	mg/L
Hardness, Calcium/Magnesium (As CaCO <sub>3</sub> )	-	-	25.9	mg/L	25.4	mg/L	26.7	mg/L
Organic Carbon, Dissolved	-	-	2.31	mg/L	2.63	mg/L	2.36	mg/L
pH	6.5 - 9.0		7.06J	std	7.21J	std	7.05J	std

Notes

<sup>1</sup> Value obtained from the GL Tier 2 Values; National Recommended Water Quality Criteria; Suter and Tsao (1996); Reference condition for EcoRegion XI (25 percentile); NCDENR State Standards for surface water

°C degrees Celsius

EPA U.S. Environmental Protection Agency

J Value is estimated

J+ Value is estimated with a possible high bias

J- Value is estimated with a possible low bias

µg/L micrograms per liter

mg/L milligrams per liter

std standard

U Analyte was not detected at the listed reporting limit.

**EDEN NORTH CAROLINA COAL ASH SPILL  
SURFACE WATER RESULTS**

Analyte	Ecological Screening Standard for Surface Water Samples <sup>1</sup>		Hwy 58 Bridge		Hwy 360	
<b>Sample Information</b>						
Sample ID	-		EDEN-HW58-C-SW-20140403		EDEN-HW360-C-SW-20140403	
Date	-		04/03/2014		04/03/2014	
Time	-		0905		0955	
Status	-		Validation Complete		Validation Complete	
Type	-		Surface Water		Surface Water	
<b>Dissolved metals</b>						
Aluminum	87	µg/L	14.2U	µg/L	18.7U	µg/L
Antimony	5.6	µg/L	5U	µg/L	5U	µg/L
Arsenic	10	µg/L	0.152J	µg/L	0.163J	µg/L
Barium	220	µg/L	19.7	µg/L	20.6	µg/L
Beryllium	0.66	µg/L	0.65U	µg/L	0.65U	µg/L
Boron	0.36	mg/L	0.0747U	mg/L	0.0676U	mg/L
Cadmium	0.1	µg/L	0.1U	µg/L	0.1U	µg/L
Calcium	-	-	6,770	µg/L	6,660	µg/L
Chromium	25	µg/L	0.128J	µg/L	0.138J	µg/L
Cobalt	3	µg/L	5U	µg/L	5U	µg/L
Copper	3	µg/L	2U	µg/L	2U	µg/L
Iron	1,000	µg/L	238	µg/L	206	µg/L
Lead	0.59	µg/L	0.5U	µg/L	0.5U	µg/L
Magnesium	-	-	2,670J	µg/L	2,640J	µg/L
Manganese	200	µg/L	7.86	µg/L	8.76	µg/L
Mercury	0.000012	mg/L	0.0002U	mg/L	0.0002U	mg/L
Molybdenum	800	µg/L	5U	µg/L	5U	µg/L
Nickel	17	µg/L	5U	µg/L	5U	µg/L
Potassium	53,000	µg/L	5,000U	µg/L	5,000U	µg/L
Selenium	5	µg/L	4.5U	µg/L	4.5U	µg/L
Silver	0.06	µg/L	0.055U	µg/L	0.055U	µg/L
Sodium	680,000	µg/L	8,370	µg/L	8,180	µg/L
Thallium	0.24	µg/L	0.2U	µg/L	0.2U	µg/L
Vanadium	27	µg/L	0.516J	µg/L	0.53J	µg/L
Zinc	39	µg/L	10UJ	µg/L	2.97J	µg/L

**EDEN NORTH CAROLINA COAL ASH SPILL  
SURFACE WATER RESULTS**

Analyte	Ecological Screening Standard for Surface Water Samples <sup>1</sup>		Hwy 58 Bridge		Hwy 360	
<b>Sample Information</b>						
Sample ID	-		EDEN-HW58-C-SW-20140403		EDEN-HW360-C-SW-20140403	
Date	-		04/03/2014		04/03/2014	
Time	-		0905		0955	
Status	-		Validation Complete		Validation Complete	
Type	-		Surface Water		Surface Water	
<b>Total Dissolved Solids</b>						
Total Dissolved Solids	-	-	93	mg/L	82	mg/L
<b>Total Suspended Solids</b>						
Total Suspended Solids	-	-	8.5	mg/L	3J	mg/L
<b>Total Metals</b>						
Aluminum	2,000	µg/L	290	µg/L	229	µg/L
Antimony	5.6	µg/L	5U	µg/L	5U	µg/L
Arsenic	10	µg/L	4.5U	µg/L	4.5U	µg/L
Barium	220	µg/L	21.9	µg/L	22.4	µg/L
Beryllium	0.66	µg/L	0.65U	µg/L	0.65U	µg/L
Boron	0.36	mg/L	0.0775U	mg/L	0.0706U	mg/L
Cadmium	2	µg/L	0.1U	µg/L	0.1U	µg/L
Calcium	-	-	6,790	µg/L	6,600	µg/L
Chromium	29	µg/L	2.5U	µg/L	2.5U	µg/L
Cobalt	24	µg/L	5U	µg/L	5U	µg/L
Copper	3	µg/L	2U	µg/L	2U	µg/L
Iron	2,300	µg/L	906	µg/L	808	µg/L
Lead	0.6	µg/L	0.5U	µg/L	0.5U	µg/L
Magnesium	-	-	5,000U	µg/L	5,000U	µg/L
Manganese	200	µg/L	22.9	µg/L	24.3	µg/L
Mercury	0.000012	mg/L	0.0002U	mg/L	0.0002U	mg/L
Molybdenum	-	-	5U	µg/L	5U	µg/L
Nickel	17	µg/L	0.544J	µg/L	0.467J	µg/L
Potassium	53,000	µg/L	5,000U	µg/L	5,000U	µg/L
Selenium	5	µg/L	4.5U	µg/L	4.5U	µg/L
Silver	0.06	µg/L	0.05U	µg/L	0.05U	µg/L
Sodium	680,000	µg/L	8,320	µg/L	8,040	µg/L
Thallium	0.24	µg/L	0.2UJ	µg/L	0.2UJ	µg/L
Vanadium	27	µg/L	1.56J	µg/L	1.55J	µg/L
Zinc	39	µg/L	10U	µg/L	10U	µg/L
<b>Anions</b>						
Bromide	-	-	1U	mg/L	1U	mg/L
Chloride	230	mg/L	12.4	mg/L	11.7	mg/L
Sulfate	-	-	5.48	mg/L	5.69	mg/L

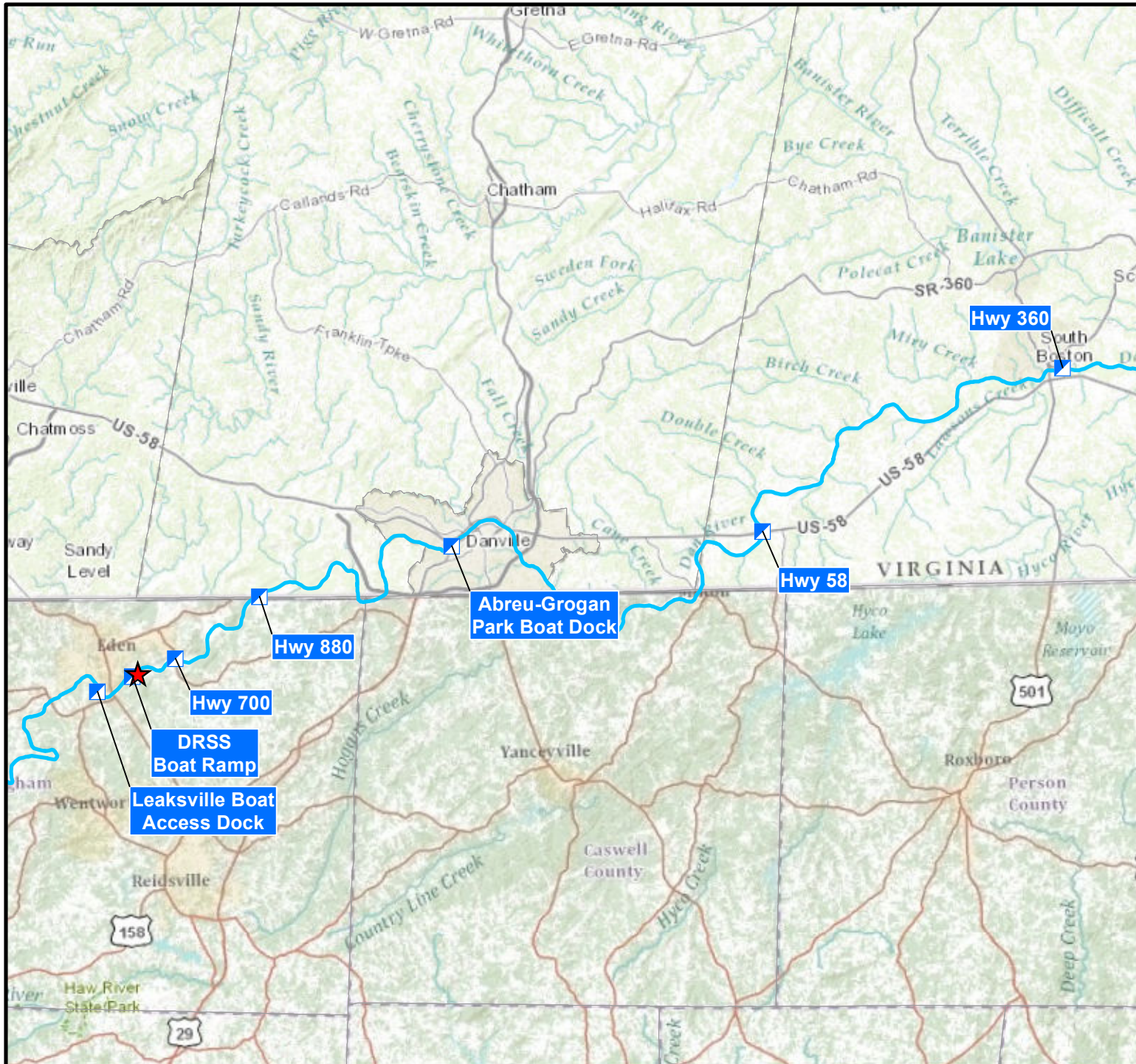


## EDEN NORTH CAROLINA COAL ASH SPILL SURFACE WATER RESULTS

Analyte	Ecological Screening Standard for Surface Water Samples <sup>1</sup>		Hwy 58 Bridge		Hwy 360	
<b>Sample Information</b>						
Sample ID	-		EDEN-HW58-C-SW-20140403		EDEN-HW360-C-SW-20140403	
Date	-		04/03/2014		04/03/2014	
Time	-		0905		0955	
Status	-		Validation Complete		Validation Complete	
Type	-		Surface Water		Surface Water	
<b>Wet Chemistry</b>						
Alkalinity, Total (As CaCO <sub>3</sub> )	-	-	21.3	mg/L	21.6	mg/L
Hardness, Calcium/Magnesium (As CaCO <sub>3</sub> )	-	-	28	mg/L	27.3	mg/L
Organic Carbon, Dissolved	-	-	3.3	mg/L	2.35	mg/L
pH	6.5 - 9.0	std	7.18J	std	7.1J	std

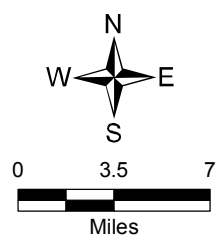
Notes

- <sup>1</sup> Value obtained from the GL Tier 2 Values; National Recommended Water Quality Criteria; Suter and Tsao (1996); Reference condition for EcoRegion XI (25 percentile); NCDENR State Standards for surface water
- °C degrees Celsius
- EPA U.S. Environmental Protection Agency
- J Value is estimated
- J+ Value is estimated with a possible high bias
- J- Value is estimated with a possible low bias
- µg/L micrograms per liter
- mg/L milligrams per liter
- std standard
- U Analyte was not detected at the listed reporting limit.



**Legend**

- ★ Approximate Spill Location
- ▣ Surface Water Sample Location
- Dan River



Map Source: ArcGIS Online World Map Topo, 2014

**Surface Water Sample Locations**  
**April 3, 2014**

