

Ambient Air Monitoring Results - Total Detectable PCB Homologues  
Lower Harbor CAD Cell Construction Phase 1

Sampling Date <sup>(1)</sup>	PCB Concentration by Location (ng/m <sup>3</sup> ) <sup>(3)</sup>				Activity Period
	Station 44 Taber	Station 50 Area D <sup>(2)</sup>	Station 64 Pilgrim	Station 65 Dredge	
3/26/2013	1.1	0.49	1.8/1.8d	Not Sampled	Pre-Dredge Samples.
11/20/2013	1.64	3.55	1.68/2.0d	6.21	
12/4/2013	3.31/3.06d	0.643	2.16	3.57	Lower Harbor CAD Cell Construction Phase 1 (Top of CAD Cell dredging)
12/19/2013	2.32	3.5/3.02d	3.13	0.89	Lower Harbor CAD Cell Construction Phase 1 (Top of CAD Cell dredging)
3/18/2014	0.41	2.8	0.22	Not Sampled	Post-Dredge Samples.

ng/m<sup>3</sup> = nanograms per cubic meter of air

d = duplicate sample result

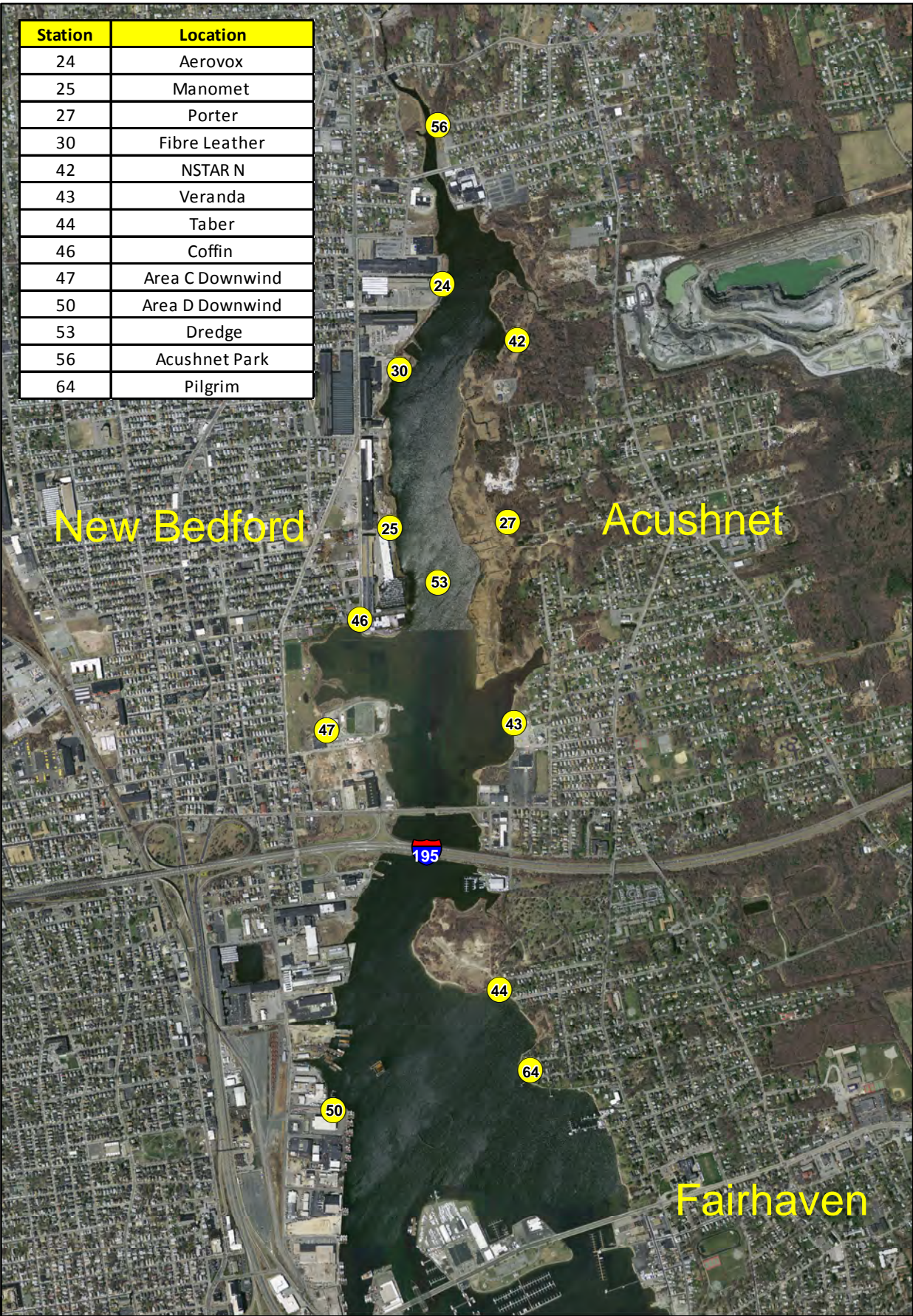
Notes:

(1) Sampled using EPA method TO-10A, analyzed using EPA method 1668A.

(2) Area D has three potential sampling stations #50, #51 and #52 that represent the downwind sample location for the dewatering facility. Regardless of where the sample is collected that is, #50, #51 or #52, it is reported as Station #50.

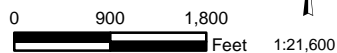
(3) All results reported for 24 hour time-weighted average in nanograms per cubic meter of air (ng/m<sup>3</sup>) with the exception of Station 65 (Dredge) which is an 8 hour sample.

Station	Location
24	Aerovox
25	Manomet
27	Porter
30	Fibre Leather
42	NSTAR N
43	Veranda
44	Taber
46	Coffin
47	Area C Downwind
50	Area D Downwind
53	Dredge
56	Acushnet Park
64	Pilgrim



**Legend**

● 2014 Ambient Air Sampling Station Location



**JACOBS**

2014 Ambient Air  
Sampling Station  
Locations

New Bedford Harbor Superfund Site

NAME: jacobus

Date: 1/20/2014

Figure 1

Path: Y:\NBH\Projects\35862076\20140120\Acushnet\_Sampling\_Station\stations2014.mxd