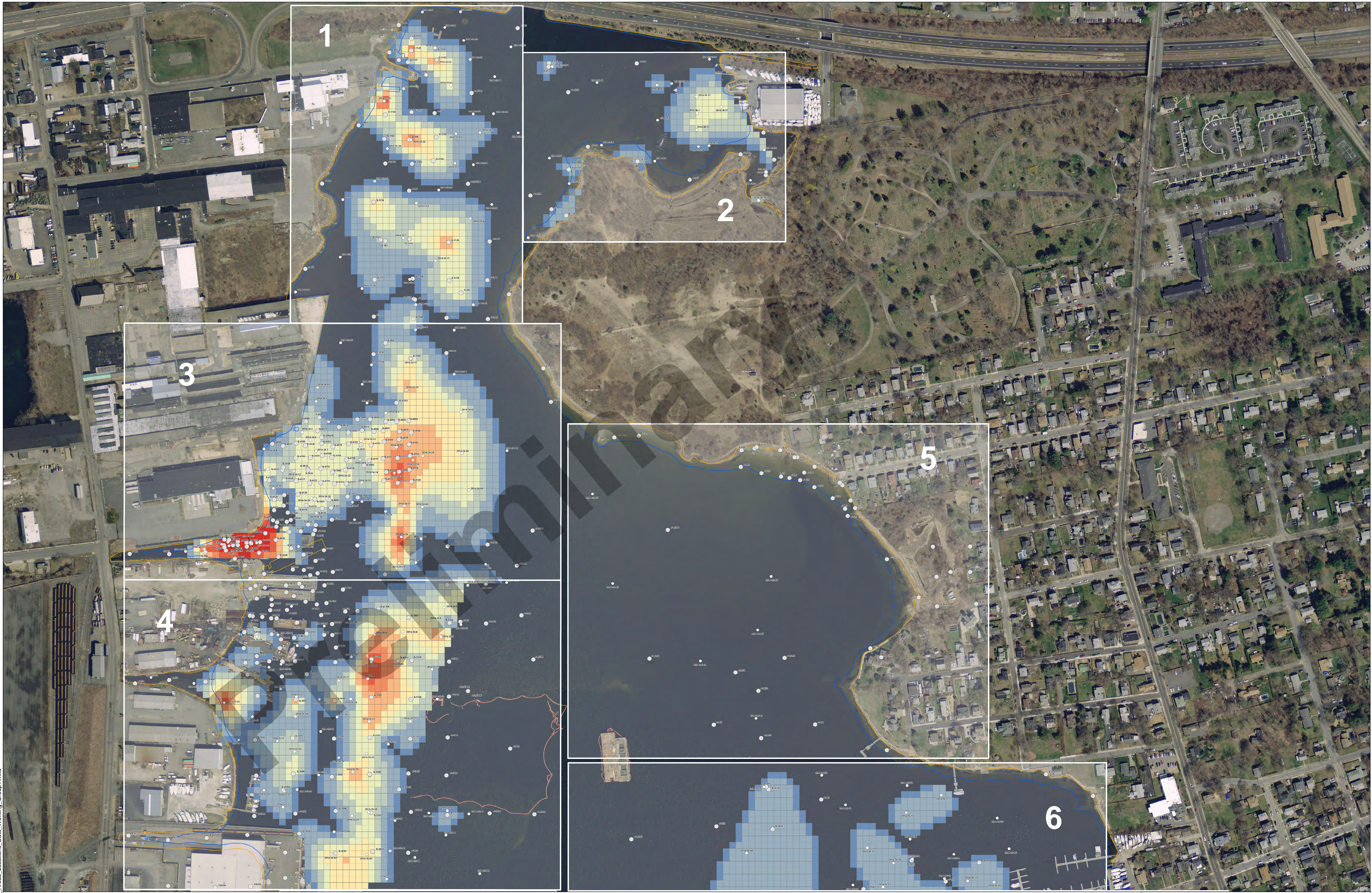


Path: Y:\NH\Projects\5550708\20150626ArcGIS\1\_H\_Dredge\_Areas\_Locations\_Data\_Working\_Group1.mxd



- Legend**
- IA Core Sample Location
  - Historical Core Sample Location
  - MLLW
  - MLW
  - MHW
  - MHHW

**Thickness of Sediment to Remove, ft**

> 6	2
4	1.5
3.5	1
3	0.5
2.5	

Aerial Photography MASSGIS 2014

0 125 250  
 Feet 1:1,500



**Lower Harbor Dredge Areas Showing Thickness of Sediment to Remove and IA/ Historical Core Locations**