



NATIONAL WATER PROGRAM MID-YEAR REPORT

FISCAL YEAR 2009



Office of Water
Environmental Protection Agency
July 2009

TABLE OF CONTENTS

I)	Introduction	1
II)	Mid-Year Performance Overview	3
III)	FY 2009 Mid-Year Performance for EPAStat and Office of Water Senior Management Measures	8

APPENDICES

- A) FY 2009 Mid-Year Performance for Measures Discussed at June 23, 2009 National Water Program Oversight Group Meeting
- B) FY 2009 National Water Program Measures Mid-Year Performance

I) INTRODUCTION

In April 2008, the National Water Program published the *National Water Program Guidance* describing how EPA, States, Tribes, and others would work together in FY 2009 to implement the water elements of the 2006 *Strategic Plan*. This *FY 2009 Mid-Year Performance Report* describes the progress being made in 2009 towards the goals and objectives described in the *Guidance* and the EPA *Strategic Plan*. The *Strategic Plan* and the FY 2009 *Guidance* are available on the Internet at www.epa.gov/water/waterplan, as is this *Report*.

This *FY 2009 Mid-Year Performance Report* is based on materials and analysis developed by teams of Headquarters and EPA Regional staff addressing each of fifteen subobjectives within the 2006 EPA *Strategic Plan* related to the National Water Program (see Table I, below). The materials developed by these Subobjective Teams provide data concerning progress toward environmental and public health goals. Much of the work of the National Water Program is accomplished through grants and this *Report* serves as the Office of Water's primary summary of progress under the Environmental Results Grants Order.

This *Report* includes three key elements:

- An overview of FY 2009 mid-year performance; and
- Mid-year status and results for senior management measures
- An appendix of the status and results for environmental and

TABLE I
NATIONAL WATER PROGRAM – KEY SUBOBJECTIVES

- 1) **Water Safe to Drink**
- 2) **Fish and Shellfish Safe to Eat**
- 3) **Water Safe for Swimming**
- 4) **Restore and Improve Water Quality on a Watershed Basis**
- 5) **Protect Coastal and Ocean Waters/Estuaries**
- 6) **Protect Wetlands**
- 7) **Protect Mexico Border Water Quality**
- 8) **Protect the Pacific Island Waters**
- 9) **Protect and Restore the Chesapeake Bay**
- 10) **Protect the Great Lakes**
- 11) **Protect the Gulf of Mexico**
- 12) **Protect the Long Island Sound**
- 13) **Protect the South Florida Ecosystem**
- 14) **Protect the Puget Sound Basin**
- 15) **Protect the Columbia River Basin**

program related measures, including national, and in many cases EPA Region, data.

PROGRAM CONTACTS

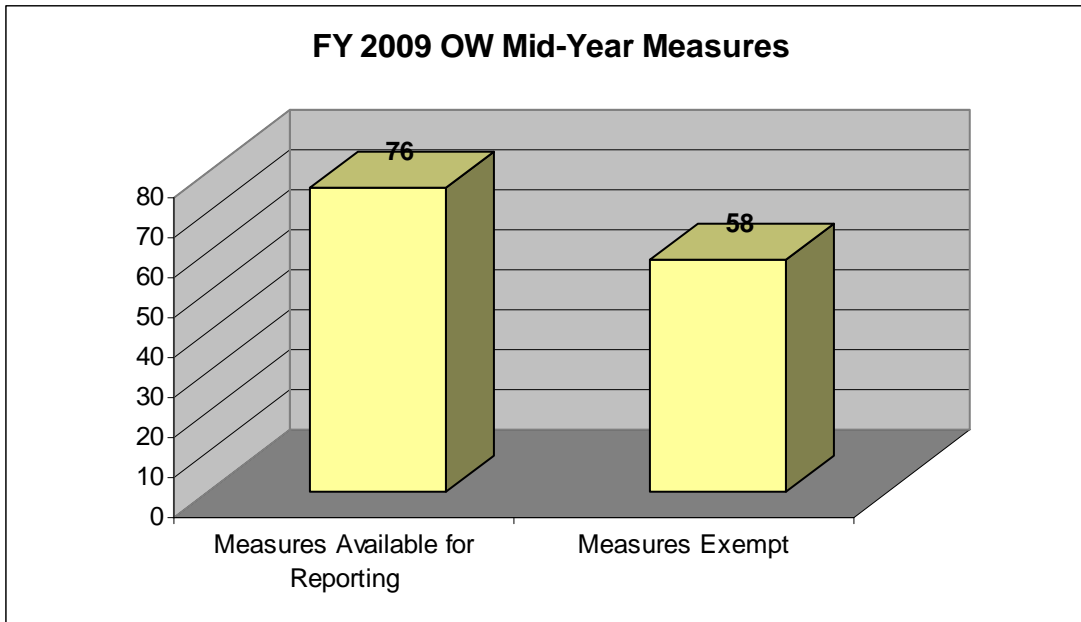
For additional information concerning this Report and supporting measures contact:

- Michael Shapiro; Deputy Assistant Administrator for Water
- Tim Fontaine; Senior Budget Officer, Office of Water
- Michael Mason; Senior Program Analyst, Office of Water

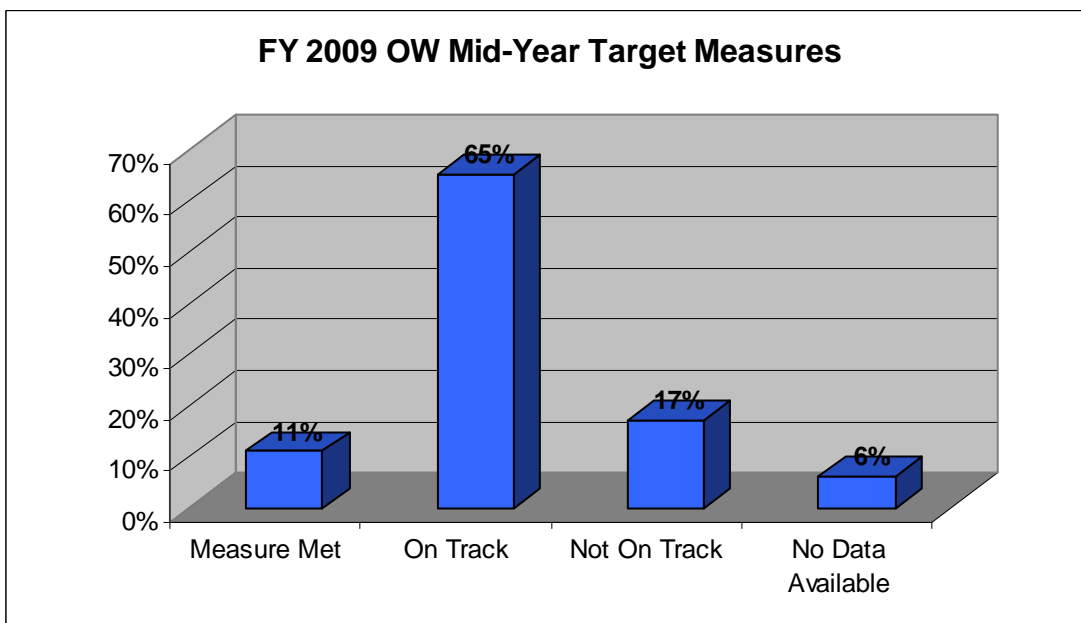
INTERNET ACCESS: This *FY 2009 Mid-Year Performance Report* and supporting documents are available at (<http://www.epa.gov/water/waterplan>).

II. FY 2009 Mid-Year Performance Overview

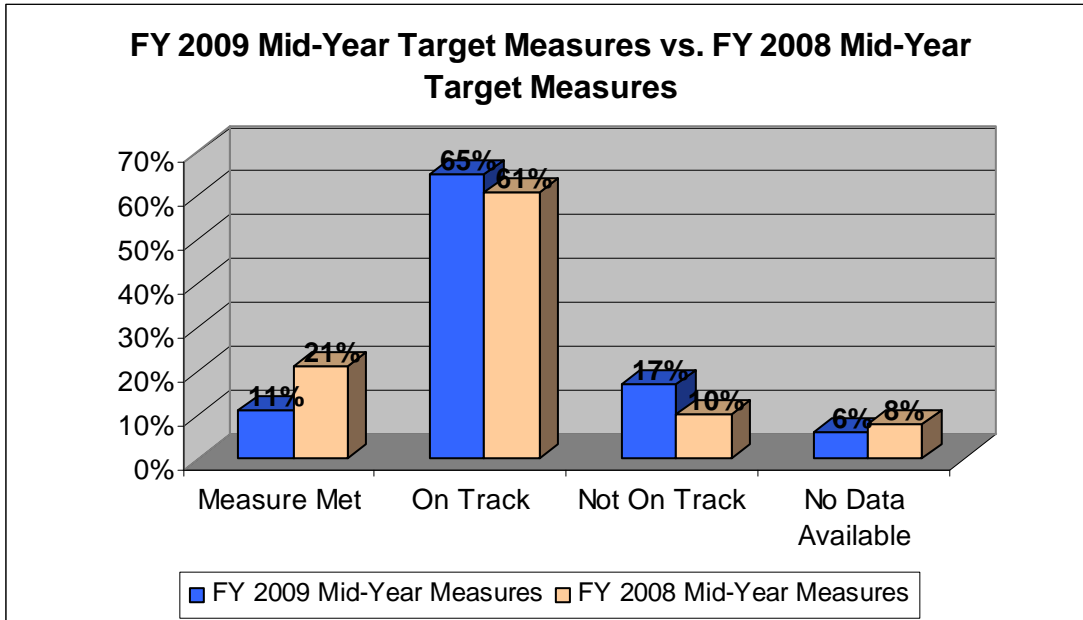
Of the 134 performance measures in the FY 2009 National Water Program Guidance, 76 measures were available for reporting at mid-year (including indicators). Fifty-eight measures were exempt from reporting mid-year results.



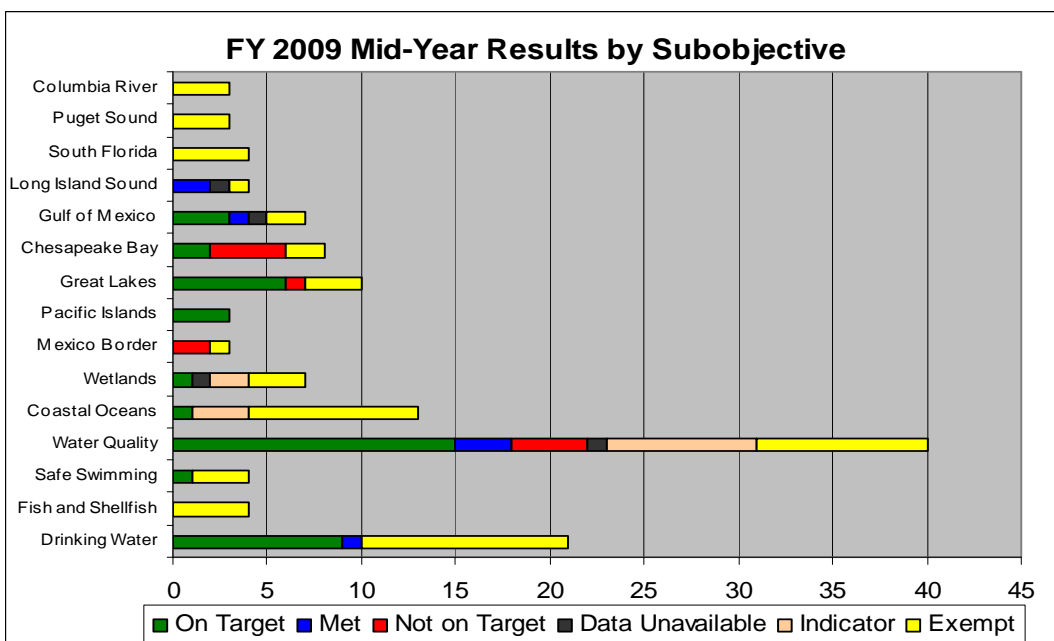
Of the 76 measures reported, 63 have commitments in 2009 and 13 are indicators. Sixty-five percent (65%) of the reported commitment measures were on track at mid-year. Eleven percent (11%) had already met their annual commitments and 17% were not on track. Six percent (6%) had no data available to report.



In comparison to FY 2008, the Office of Water appears to be performing slightly better in 2009 with 65% of measures on track to meet their commitments in 2009 against 61% of measures on track in 2008. However, 17% of measures are not on track in 2009 compared to 10% of measures not on track in 2008. More measures had already met their commitments at this point in 2008 (21%) compared to this year's mid-year results (11%).



The range of mid-year performance among subobjectives varies. Drinking Water, Water Quality, Pacific Islands, Great Lakes and Gulf of Mexico had a large portion of measures on target. Chesapeake Bay is at the highest risk of not meeting most of their measures by FY 2009 end-of-year, and almost every subobjective had a list of exempt measures from FY 2009 mid-year reporting.



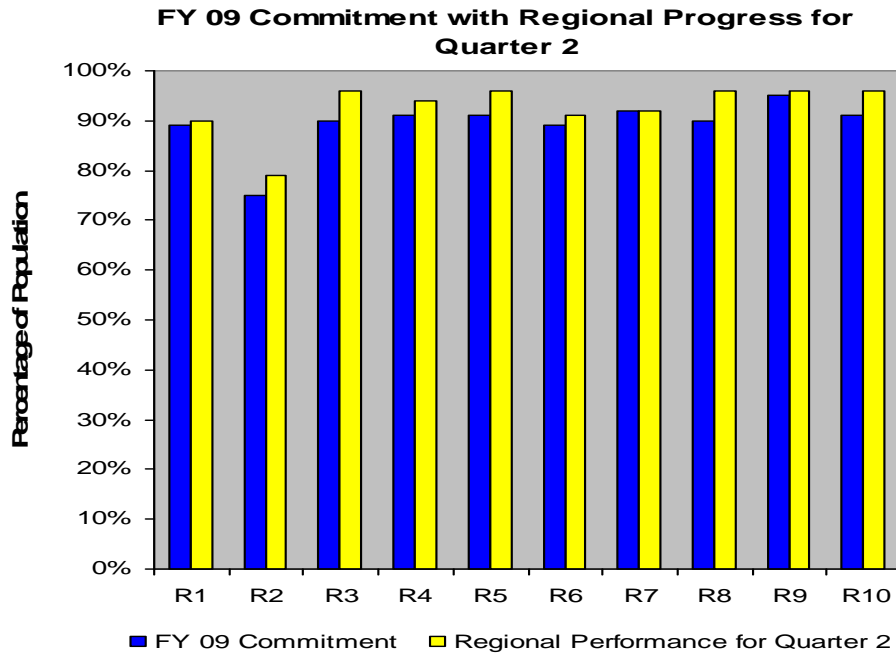
III. FY 2009 Mid-Year Performance for Senior Management and EPAStat Measures

The AA and DAA meet with the Deputy Administrator every six weeks to discuss current issues and selected EPAStat and Senior Management performance measures (reported quarterly).

2.1.1 – EPAStat Measure

Percent of the population served by community water systems that receive drinking water that meets all applicable health-based drinking water standards through approaches including effective treatment and source water protection.

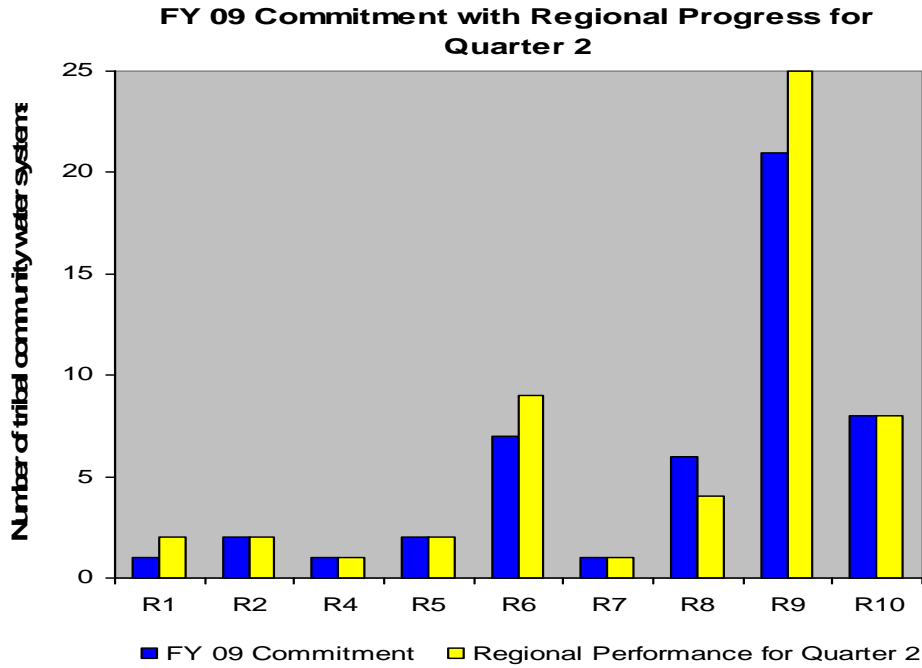
Findings: Results for Quarter 2 currently exceed the FY 09 commitment. This measure is annual and results fluctuate based on violations that may occur throughout the year.



SDW-1b – EPAStat Measure

Number of tribal community water systems (CWSs) that have undergone a sanitary survey within the past three years (five years for outstanding performers) as required under the Interim Enhanced and Long-Term Surface Water Treatment Rules.

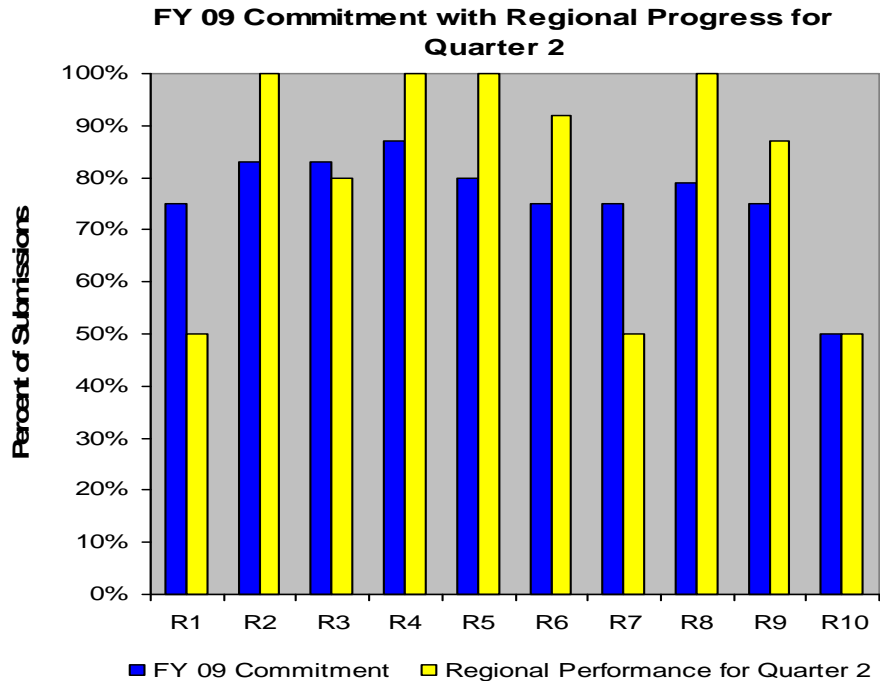
Findings: The amount of tribal sanitary surveys completed has exceeded the commitment for FY 2009.



WQ-4a – EPA Stat Measure, Senior Management Measure

Percentage of submissions of new or revised water quality standards from States and Territories that are approved by EPA.

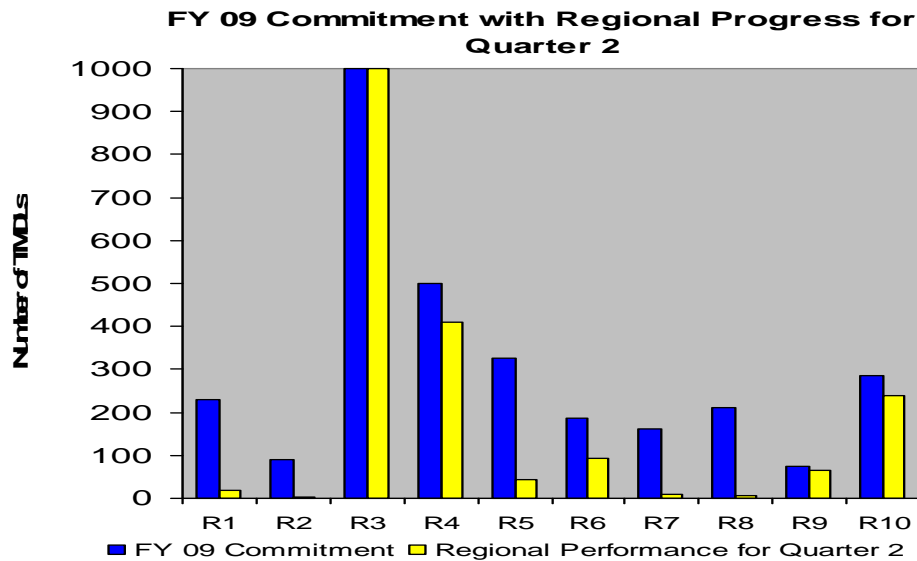
Findings: Quarter 2 results are on track for meeting the commitment at the end of the year.



WQ-8a – EPAStat Measure, Senior Management Measure

Number, and national percent, of TMDLs that are established or approved by EPA [Total TMDLs] on a schedule consistent with national policy (Note: A TMDL is a technical plan for reducing pollutants in order to attain water quality standards. The terms ‘approved’ and ‘established’ refer to the completion and approval of the TMDL itself.

Findings: Quarter 2 results show this measure is on track to meet the FY 2009 commitment.

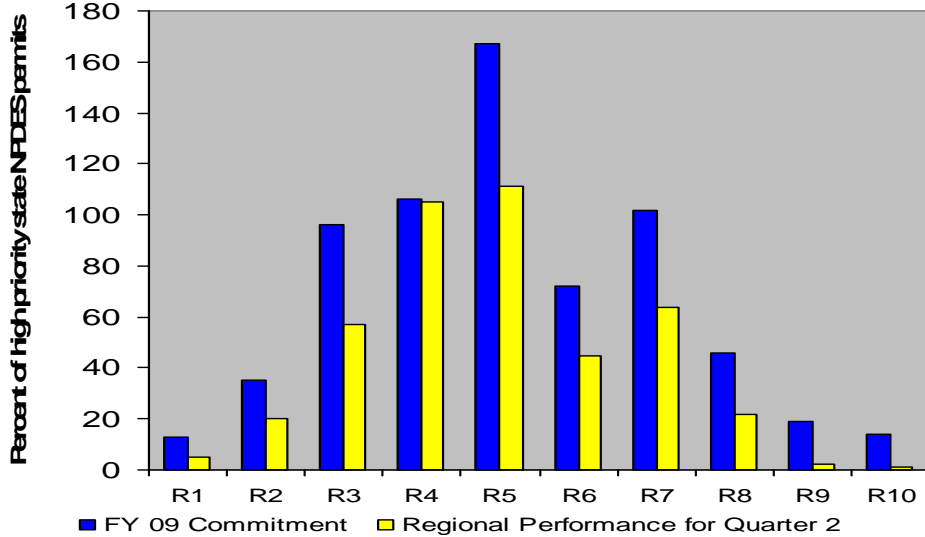


WQ-19a - EPAStat Measure, Senior Management Measure

Number, and national percent, of high priority state NPDES permits that are issued as scheduled.

Findings: Quarter 2 results show this measure is on track to meet the 2009 commitment. (Universe was not finalized until January 2009.)

FY 09 Commitment with Regional Progress for Quarter 2

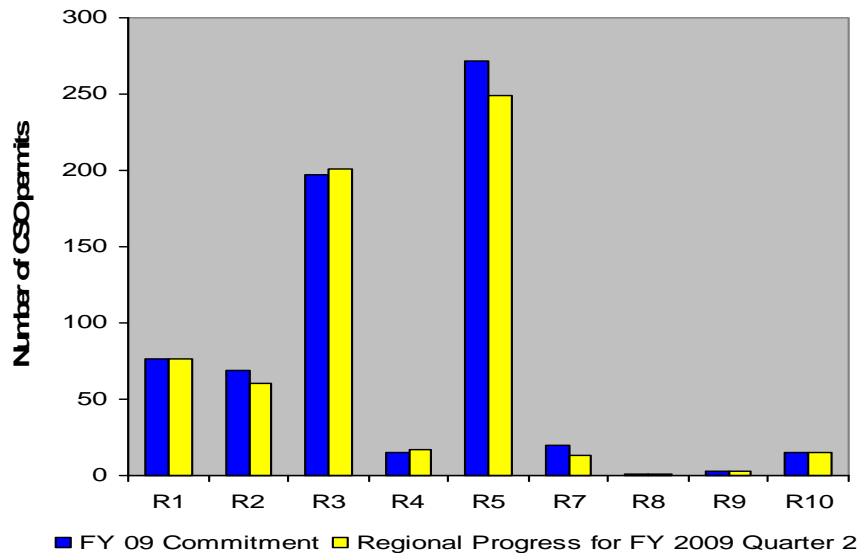


SS-1 - EPA Stat Measure

Number and national percent, using a constant denominator, of Combined Sewer Overflow (CSO) permits with a schedule incorporated into an appropriate enforceable mechanism, including a permit or enforcement order, with specific dates and milestones, including a completion date consistent with Agency guidance. (cumulative)

Findings: Quarter 2 results show this measure is on track to meet the FY 2009 commitment.

FY 09 Commitment with Regional Progress for Quarter 2 FY 2009

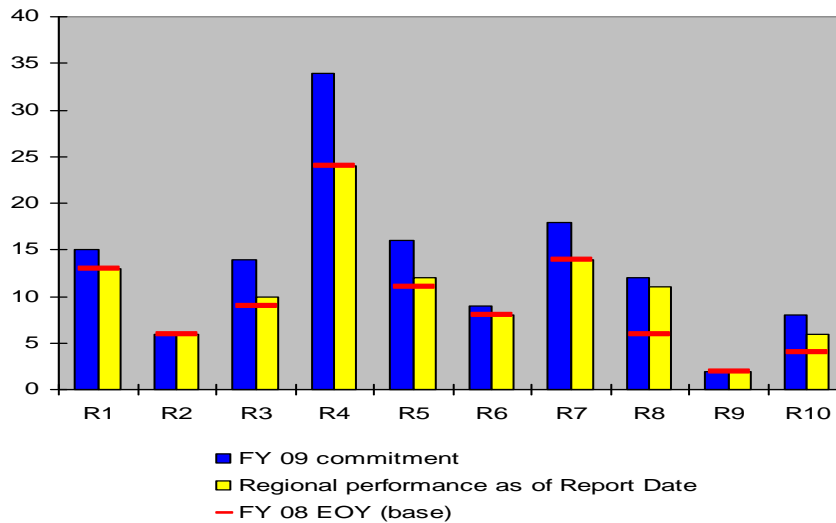


WQ-10 - EPAStat Measure

Number of waterbodies identified by States (in 1998/2000 or subsequent years) as being primarily nonpoint source (NPS)-impaired that are partially or fully restored (cumulative).

Findings: Quarter 2 results indicate that the measure is not on track to meet the FY 2009 commitment.

FY 09 Commitment with Regional Progress for Quarter 2 FY 2009

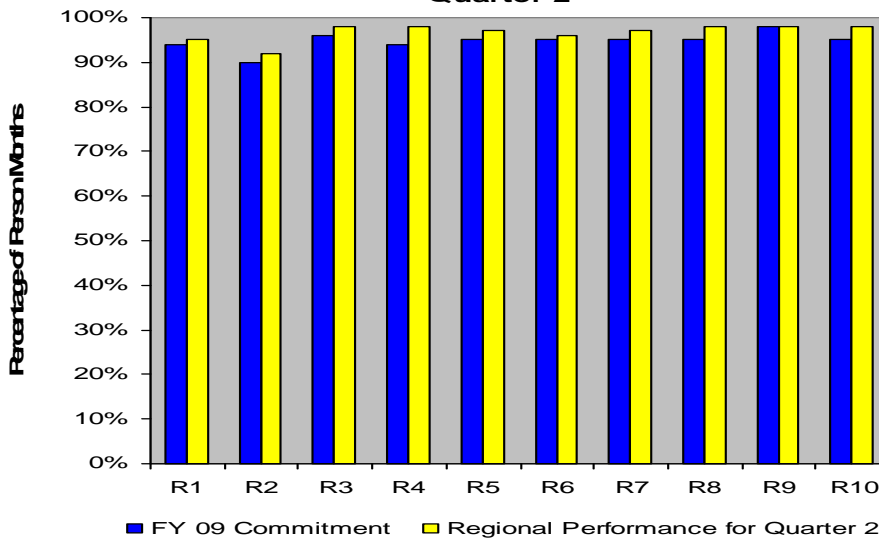


SP-2 - Senior Management Measure

Percent of “person months” (i.e., all persons served by community water systems times 12 months) during which community water systems provide drinking water that meets all applicable health-based drinking water standards.

Findings: Quarter 2 results indicate that the measure is on track to meet the FY 2009 commitment.

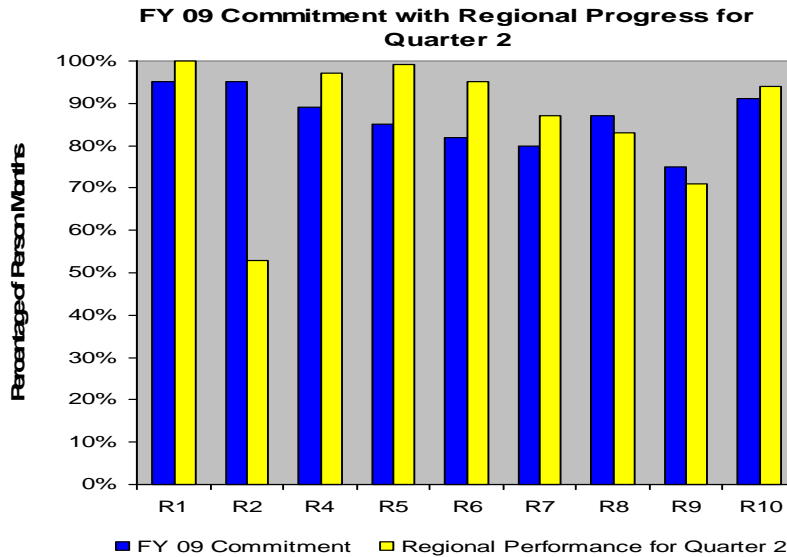
FY 09 Commitment with Regional Progress for Quarter 2



SP-3 - Senior Management Measure

Percent of population in Indian country served by community water systems that receive drinking water that meets all applicable health-based drinking water standards.

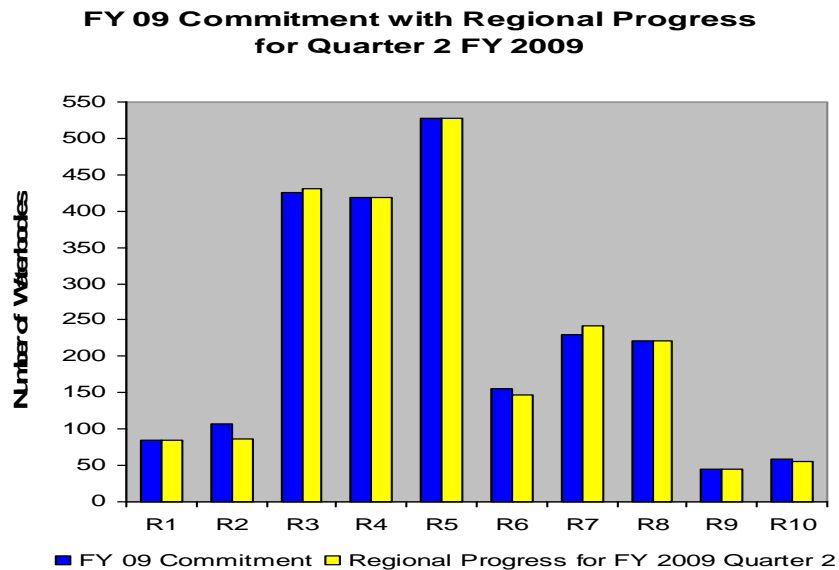
Findings: Quarter 2 results indicate that the measure is on track to meet the FY 2009 commitment.



SP-10 - Senior Management Measure

Number of waterbodies identified in 2002 as not attaining water quality standards where standards are now fully attained (cumulative).

Findings: Quarter 2 results indicate that the measure is on track to meet the FY 2009 commitment.



4.3.2 - Senior Management Measure

Working with partners, protect or restore additional acres of habitat within the study areas for the 28 estuaries that are part of the National Estuary Program (NEP).

Findings: This measure was exempt from FY 2009 Quarter 2 reporting.

APPENDIX A: FY 2009 Oversight Council Measures

FY 10 ACS Code	FY 2010 National Water Program Guidance Measure Text	*Measure Groups	**FY 2010 Budget Target	FY 2010 National Target	Region 1	Region 2	Region 3	Region 4	Region 5	Region 6	Region 7	Region 8	Region 9	Region 10	HQ	***SP Proposed Target (FY 2014)
* Measure categories include: OMB PA (OMB Program Assessment); BUD (Budget Measure); SG (State Grant Measure); SMM (Senior Management Measure); EQR (EPAStat Quarterly Report Measure); and NPMStat (OW EPAStat measure). ** FY 09 and FY 10 Budget Target is from 4-year performance measure table in the FY 2010 Presidents Budget. *** Strategic Plan (SP) proposed targets are from the new 2009-2014 EPA Strategic Plan, to be submitted to Congress in September 2009.																
Subobjective 2.1.1 Water Safe to Drink																
SDW-1a	Percent of community water systems (CWSs) that have undergone a sanitary survey within the past three years (five years for outstanding performers) as required under the Interim Enhanced and Long-Term I Surface Water Treatment Rules.	OMB PA BUD SG	95%	95%	90%	95%	91%	84%	89%	93%	90%	95%	75%	95%		
	FY 2009 MID YEAR			Exempt												
	FY 2009 COMMITMENT			91.8%	90%	95%	91%	85%	89%	93%	95%	90%	100%	95%		
	FY 2008 END OF YEAR RESULT			87%	96%	96%	95.4%	84.3%	87.6%	94.4%	93%	91%	60.7%	66%		
	FY 2008 COMMITMENT			94%	90%	95%	95%	95%	84%	93%	95%	94%	100%	95%		
	FY 2007 END OF YEAR RESULT			92%	88%	95%	91%	95%	81%	91%	95%	92%	100%	95%		
	FY 2007 COMMITMENT			94%	90%	95%	98%	95%	80%	95%	100%	95%	100%	95%		
	FY 2005 BASELINE			n/a												
	UNIVERSE (FY07)			11,471	489	1,387	1,235	1,802	1,376	2,100	792	780	917	593		
	National Program Manager Comments	*Prior to FY 07, this measure tracked states, rather than CWSs, in compliance with this regulation. **Region 2 will not have FY 07 end-of-year data until April 2008. The national FY 07 end-of-year result provided is an estimate.														
SDW-8	Percent of high priority Class V wells identified in sensitive ground water protection areas that are closed or permitted. (cumulative) [Measure will still set targets and commitments and report results in both % and #. Numerical commitments from UIC database.]	OMB PA BUD	n/a	76% (25,312)	90% (12,790)	86%	85%	95%	75%	86%	95% (636)	80%	43%	50%		
	FY 2009 MIDYEAR			81%	99%	n/a	91%	73%	87%	100%	n/a	88%	39%	71%		
	FY 2009 COMMITMENT (Measure revised for FY 09)			74% (24,832)	90% (12,690)	86% (884)	88% (3,178)	95% (1,143)	60% (2,501)	86% (234)	95% (638)	70% (1,295)	40% (2,029)	20% (240)		
	FY 2008 END OF YEAR RESULT (ACS results numerical)			84% (5932/7048)	100% 7/7	95% 313/330	90% 3072/3402	96% 133/138	82% 140/170	100% 2	100% 378	89% 1764/1993	0	20% 125/630		
	FY 2008 COMMITMENT (ACS commitments numerical)			86% (3,883)	56	225 (96%)	2,554 (90%)	92 (86%)	44 (50%)	2 (20%)	354 (95%)	8 (85%)	4 (50%)	44 (20%)		
	FY 2007 END OF YEAR RESULT			75% (4,900)	data n/a	(100) 98%	(2,734) 91%	(30) 97%	(69) 66%	(0) n/a	(0) n/a	1,346) 82%	(0) n/a	(621) 19%		
	FY 2007 COMMITMENT			Indicator												
	UNIVERSE			24,466	12,100	336	3,295		3,662				5,073			
	National Program Manager Comments	Measure revised for FY 09. Universe for FY 09 will be updated for the revised measure. Note: Measure will still set target and commitment and report results in both percent and number. "Sensitive ground water protection areas" are defined by the UIC primacy program director, but at a minimum must include ground water based community water system source water areas. This measure does not report all of the high priority wells that are being closed or permitted because some states do not distinguish between high priority wells in ground water based community water system source water areas and other areas. Indicator measure in FY 06 and FY 07. Regional results for FY 06 and FY07 are a mixture of annual and cumulative data.														
Subobjective 2.1.2 Fish and Shellfish Safe to Eat																
SP-6	Percent of women of childbearing age having mercury levels in blood above the level of concern.	BUD	5.1%	5.1%											5.1%	4.6%
	FY 2009 MIDYEAR			Exempt												
	FY 2009 COMMITMENT			5.2%											5.2%	

APPENDIX A: FY 2009 Oversight Council Measures

FY 10 ACS Code	FY 2010 National Water Program Guidance Measure Text	*Measure Groups	**FY 2010 Budget Target	FY 2010 National Target	Region 1	Region 2	Region 3	Region 4	Region 5	Region 6	Region 7	Region 8	Region 9	Region 10	HQ	***SP Proposed Target (FY 2014)
* Measure categories include: OMB PA (OMB Program Assessment); BUD (Budget Measure); SG (State Grant Measure); SMM (Senior Management Measure); EQR (EPAStat Quarterly Report Measure); and NPMStat (OW EPAStat measure). ** FY 09 and FY 10 Budget Target is from 4-year performance measure table in the FY 2010 Presidents Budget. *** Strategic Plan (SP) proposed targets are from the new 2009-2014 EPA Strategic Plan, to be submitted to Congress in September 2009.																
	FY 2008 END OF YEAR RESULT			data n/a												data n/a
	FY 2008 COMMITMENT (new measure in FY 08)			5.5%												5.5%
	FY 2005 BASELINE			5.7%												
	National Program Manager Comments	SP-6 is a new measure starting in FY 08.														
Subobjective 2.2.1 Improve Water Quality on a Watershed Basis																
WQ-3a	Number, and national percent, of States and Territories that within the preceding three year period, submitted new or revised water quality criteria acceptable to EPA that reflect new scientific information from EPA or other resources not considered in the previous standards.	OMB PA BUD SG	66%	37 (66%)	2	3	3	8	5	4	2	4	3	2		
	FY 2009 MIDYEAR			30 (54%)	2	2	3	6	3	4	2	4	3	1		
	FY 2009 COMMITMENT			33 (59%)	2	2	4	6	4	4	3	5	2	1		
	FY 2008 END OF YEAR RESULT			35 (62.5%)	3	2	4	5	4	5	2	5	3	2		
	FY 2008 COMMITMENT			38 (67.9%)	3	2	4	6	4	5	4	4	3	3		
	FY 2007 END OF YEAR RESULT			39 (66.1%)	3	3	6	4	2	5	2	6	4	4		
	FY 2007 COMMITMENT			41 (73%)	2	3	6	5	3	5	4	6	3	4		
	FY 2005 BASELINE			38(68%)	4	1	4	7	5	4	2	4	4	3		
	UNIVERSE			56	6	4	6	8	6	5	4	6	7	4		
	National Program Manager Comments	*FY 05 and 06 end-of-year results are from the WATA database.														
WQ-6a	Number of Tribes that currently receive funding under Section 106 of the Clean Water Act that have developed and begun implementing monitoring strategies that are appropriate to their water quality program consistent with EPA Guidance. (cumulative)			157	6	1	n/a	2	29	14	3	15	50	37		
	FY 2009 MIDYEAR			107	6	0	n/a	1	28	14	2	n/a	25	31		
	FY 2009 COMMITMENT			128	6	0	n/a	1	26	14	3	15	30	33		
	FY 2008 END OF YEAR RESULT			101	6	0	n/a	1	24	14	2	4	18	32		
	FY 2008 COMMITMENT			79	5	0	n/a	1	24	14	2	4	9	20		
	FY 2007 END OF YEAR RESULT			44	0	0	n/a	1	4	14	1	11	9	4		
	FY 2007 COMMITMENT			37	1	0	N/A	1	3	14	1	4	9	4		
	FY 2005 BASELINE			0	0	0	0	0	0	0	0	0	0	0		
	UNIVERSE			242	6	1	n/a	5	32	40	5	23	93	37		
	National Program Manager Comments															
WQ-6b	Number of Tribes that are providing water quality data in a format accessible for storage in EPA's data system. (cumulative)			118	6	1	n/a	2	21	7	1	16	50	14		
	FY 2009 MIDYEAR			56	1	1	n/a	1	20	7	1	0	18	7		
	FY 2009 COMMITMENT			73	6	1	n/a	1	18	7	1	15	10	14		
	FY 2008 END OF YEAR RESULT			60	1	0	n/a	1	18	7	1	15	10	7		

APPENDIX A: FY 2009 Oversight Council Measures

FY 10 ACS Code	FY 2010 National Water Program Guidance Measure Text	*Measure Groups	**FY 2010 Budget Target	FY 2010 National Target	Region 1	Region 2	Region 3	Region 4	Region 5	Region 6	Region 7	Region 8	Region 9	Region 10	HQ	***SP Proposed Target (FY 2014)
* Measure categories include: OMB PA (OMB Program Assessment); BUD (Budget Measure); SG (State Grant Measure); SMM (Senior Management Measure); EQR (EPAStat Quarterly Report Measure); and NPMStat (OW EPAStat measure). ** FY 09 and FY 10 Budget Target is from 4-year performance measure table in the FY 2010 Presidents Budget. *** Strategic Plan (SP) proposed targets are from the new 2009-2014 EPA Strategic Plan, to be submitted to Congress in September 2009.																
	FY 2008 COMMITMENT			54	1	0	n/a	1	18	7	1	15	3	8		
	FY 2007 END OF YEAR RESULT			44	1	1	n/a	1	11	7	0	18	3	2		
	FY 2007 COMMITMENT			36	2	1	N/A	1	3	7	0	15	3	4		
	FY 2005 BASELINE			3	0	0	n/a	0	0	2	0	1	0	0		
	UNIVERSE			242	6	1	n/a	5	32	40	5	23	93	37		
	National Program Manager Comments	"In keeping with established schedules" means that states include in their annual Section 106 Monitoring Initiative workplans specific actions that are intended to implement their monitoring strategies and that states demonstrate that they are making a good faith effort to do these activities.														
WQ-10	Number of waterbodies identified by States (in 1998/2000 or subsequent years) as being primarily nonpoint source (NPS)-impaired that are partially or fully restored. (cumulative)	OMB PA SG NPMStat	Long-Term	184	17	9	19	44	22	10	20	16	3	10		
	FY 2009 MIDYEAR			106	13	6	10	24	12	8	14	11	2	6		
	FY 2009 COMMITMENT			134	15	6	14	34	16	9	18	12	2	8		
	FY 2008 END OF YEAR RESULT			97	13	6	9	24	11	8	14	6	2	4		
	FY 2008 COMMITMENT			91	13	6	8	23	10	5	14	6	2	4		
	FY 2007 END OF YEAR RESULT			48	9	0	6	14	3	5	9	0	2	0		
	FY 2007 COMMITMENT			Indicator												
	FY 2005 BASELINE			14	1	0	2	5	2	0	4	0	0	0		
	National Program Manager Comments	Regions report results. *The universe is the estimated waterbodies impaired primarily by nonpoint sources from the 1998 (or 2000 if states did not have a 1998 list) 303(d) lists. Note that this universe shifts each time a new 303(d) list is developed, so this figure is only an estimate. Only waters on the Success Story website (http://www.epa.gov/owow/nps/Success319/) are counted. **Regional FY 06 end-of-year results not from ACS. Only a national FY 06 end-of-year result shown in ACS. Indicator measure in FY 06.														
WQ-12b	Percent of tribal facilities covered by NPDES permits that are considered current. [Measure will still set targets and commitments and report results in both % and #.]	EQR		87% (335/387)	100%	100%	n/a	100%	95%	90%	100%	90%	79%	64%		
	FY 2009 MIDYEAR			82.0%	100.0%	50.0%	n/a	100.0%	98.0%	92.0%	100.0%	91.0%	80.0%	29.0%		
	FY 2009 COMMITMENT			88% (340/388)	100% (2/2)	100% (2/2)	n/a	100% (13/13)	95% (40/42)	90% (9/10)	100% (16/16)	95% (188/198)	73% (36/49)	61% (34/56)		
	FY 2008 END OF YEAR RESULT (ACS results numerical)			85% (329)	(100%) 2	(100%) 2	n/a	(100%) 13	(100%) 42	(100%) 10	(100%) 16	(95%) 189	(79%) 38	(30%) 17		
	FY 2008 COMMITMENT (ACS commitments numerical)			89% (347)	(100%) 2	(100%) 2	n/a	(100%) 13	(93%) 40	(90%) 9	(100%) 16	(96%) 186	(80%) 32	(80%) 47		
	FY 2007 END OF YEAR RESULT (ACS results numerical)			83% (321)	(100%) 2	(100%) 2	n/a	(100%) 13	(93%) 41	(100%) 10	(100%) 16	(97%) 188	(71%) 34	(27%) 15		
	FY 2007 COMMITMENT			85% (348)	2.00	2.00	15.00	37.00	10.00	16.00	184.00	21.00	32.00	50.00		
	FY 2005 BASELINE			80% (261)	0	2	n/a	16	37	8	1	140	41	16		
	UNIVERSE			387	2	2	n/a	13	42	10	16	198	48	56		
	National Program Manager Comments	Targets, commitments, and results will be reported in both percent and number. This measure includes facilities covered by all permits, including State and EPA issued permits. Due to the shifting universe of permittees, it is important to focus on the national percent. ***(WQ-12b) FY 07 Region 8 commitment adjusted due to counting error. Universe for WQ-12b is based on FY2009 Q1 data pull.														
Subjective 4.3.1 Increase Wetlands																

APPENDIX A: FY 2009 Oversight Council Measures

FY 10 ACS Code	FY 2010 National Water Program Guidance Measure Text	*Measure Groups	**FY 2010 Budget Target	FY 2010 National Target	Region 1	Region 2	Region 3	Region 4	Region 5	Region 6	Region 7	Region 8	Region 9	Region 10	HQ	***SP Proposed Target (FY 2014)
* Measure categories include: OMB PA (OMB Program Assessment); BUD (Budget Measure); SG (State Grant Measure); SMM (Senior Management Measure); EQR (EPAStat Quarterly Report Measure); and NPMStat (OW EPAStat measure). ** FY 09 and FY 10 Budget Target is from 4-year performance measure table in the FY 2010 Presidents Budget. *** Strategic Plan (SP) proposed targets are from the new 2009-2014 EPA Strategic Plan, to be submitted to Congress in September 2009.																
SP-22	In partnership with the U.S. Army Corps of Engineers, states and tribes, achieve 'no net loss' of wetlands each year under the Clean Water Act Section 404 regulatory program.	BUD	No net loss	No Net Loss											No Net Loss	No Net Loss
	FY 2009 MIDYEAR			Exempt												
	FY 2009 COMMITMENT			No Net Loss											No net loss	
	FY 2008 END OF YEAR RESULT			data n/a											data n/a	
	FY 2008 COMMITMENT			No Net Loss											No Net Loss	
	FY 2007 END OF YEAR RESULT			data n/a											data n/a	
	FY 2007 COMMITMENT			No Net Loss												
	National Program Manager Comments	Data source: U.S. Fish & Wildlife Service Wetland Status and Trends Report.														
Subobjective 4.2.4 Sustain and Restore the U.S.-Mexico Border Environmental Health																
SP-24	Number of additional homes provided safe drinking water in the U.S.-Mexico border area that lacked access to safe drinking water in 2003.	OMB PA BUD EQR	28,434 cumulative	700						700				0		45,434 cumulative
	FY 2009 MIDYEAR			19						19				0		
	FY 2009 COMMITMENT			1,500						1,500				0		
	FY 2008 END OF YEAR RESULT			5,162						5,162				0		
	FY 2008 COMMITMENT			2,500						2,500				0		
	FY 2007 END OF YEAR RESULT			1,276											1,276	
	FY 2007 COMMITMENT			Indicator												
	FY 2003 BASELINE			98,515												
	National Program Manager Comments	Measure is regionally reported starting in FY 09. 2003 Baseline: 98,515 homes in the Mexico Border area lacking access to safe drinking water. *FY 06 end-of-year data not from ACS. Indicator measure in FY 07.														
SP-25	Number of additional homes provided adequate wastewater sanitation in the U.S.-Mexico border area that lacked access to wastewater sanitation in 2003.	OMB PA BUD EQR	246,175 cumulative	14,700						3,000				11,700		424,370 cumulative
	FY 2009 MIDYEAR			37,413						36,604				809		
	FY 2009 COMMITMENT			105,500						100,000				5,500		
	FY 2008 END OF YEAR RESULT			31,686						31,686				0		
	FY 2008 COMMITMENT			15,000						15,000				0		
	FY 2007 END OF YEAR RESULT			73,475											73,475	
	FY 2007 COMMITMENT			Indicator												
	FY 2003 BASELINE			690,723												
	National Program Manager Comments	Measure is regionally reported starting in FY 09. 2003 Baseline: 690,723 homes in the Mexico border area lacking access to wastewater sanitation. *FY 06 end-of-year data not from ACS. Indicator measure in FY 07.														
Subobjective 4.3.3 Improve the Health of the Great Lakes																

APPENDIX A: FY 2009 Oversight Council Measures

FY 10 ACS Code	FY 2010 National Water Program Guidance Measure Text	*Measure Groups	**FY 2010 Budget Target	FY 2010 National Target	Region 1	Region 2	Region 3	Region 4	Region 5	Region 6	Region 7	Region 8	Region 9	Region 10	HQ	***SP Proposed Target (FY 2014)
* Measure categories include: OMB PA (OMB Program Assessment); BUD (Budget Measure); SG (State Grant Measure); SMM (Senior Management Measure); EQR (EPAStat Quarterly Report Measure); and NPMStat (OW EPAStat measure). ** FY 09 and FY 10 Budget Target is from 4-year performance measure table in the FY 2010 Presidents Budget. *** Strategic Plan (SP) proposed targets are from the new 2009-2014 EPA Strategic Plan, to be submitted to Congress in September 2009.																
SP-31	Number of Areas of Concern in the Great Lakes Basin which are restored and de-listed.	OMB PA	Long-Term	3					3							7
	FY 2009 MIDYEAR			1					1							
	FY 2009 COMMITMENT			2					2							
	FY 2008 END OF YEAR RESULT			1					1							
	FY 2008 COMMITMENT			3					3							
	FY 2007 END OF YEAR RESULT			1					1							
	FY 2007 COMMITMENT			1												
	UNIVERSE			31												
	National Program Manager Comments	SP-31 identifies a cumulative target of delisting 3 of the original 31 US or binational Areas of Concern. Only 1 AOC (in New York) has been de-listed to date.														
Subobjective 4.3.4 Improve the Health of the Chesapeake Bay Ecosystem																
SP-35	Percent of goal achieved for implementation of nitrogen reduction practices (expressed as progress in meeting the nitrogen reduction goal of 162.5 million pounds from 1985 levels to achieve an annual cap load of 175 million lbs (based on long-term average hydrology simulations).	OMB PA BUD	52%	52% (84.44 M lbs)			52% (84.44 M lbs)									60% (97.43 M lbs)
	FY 2009 MIDYEAR			47%			47%									
	FY 2009 COMMITMENT			50% (81.19 M lbs)			50% (81.19 M lbs)									
	FY 2008 END OF YEAR RESULT			47% (75.6 M lbs)			47% (75.6 M lbs)									
	FY 2008 COMMITMENT			50% (81.25 M lbs)			50% (81.25 M lbs)									
	FY 2007 END OF YEAR RESULT (updated from ACS)			46% (74.63 M lbs)			46% (74.63 M lbs)									
	FY 2007 COMMITMENT			46% (75.22 M lbs)												
	FY 2005 BASELINE			41% (67 million lbs)												
	UNIVERSE			100% (162.5 million lbs)												
	National Program Manager Comments	2010 commitment for SP35 may be lower than target to reflect FY09 End-of Year results and an improved assessment of available and anticipated resources.														
SP-36	Percent of goal achieved for implementation of phosphorus reduction practices (expressed as progress in meeting the phosphorus reduction goal of 14.36 million pounds from 1985 levels to achieve an annual cap load of 12.8 million lbs (based on long-term average hydrology simulations).	OMB PA BUD	66%	66% (9.48 M lbs)			66% (9.48 M lbs)									74% (10.62 M lbs)
	FY 2009 MIDYEAR			63%			63%									
	FY 2009 COMMITMENT			64% (9.19 M lbs)			64% (9.19 M lbs)									

APPENDIX A: FY 2009 Oversight Council Measures

FY 10 ACS Code	FY 2010 National Water Program Guidance Measure Text	*Measure Groups	**FY 2010 Budget Target	FY 2010 National Target	Region 1	Region 2	Region 3	Region 4	Region 5	Region 6	Region 7	Region 8	Region 9	Region 10	HQ	***SP Proposed Target (FY 2014)
* Measure categories include: OMB PA (OMB Program Assessment); BUD (Budget Measure); SG (State Grant Measure); SMM (Senior Management Measure); EQR (EPAStat Quarterly Report Measure); and NPMStat (OW EPAStat measure). ** FY 09 and FY 10 Budget Target is from 4-year performance measure table in the FY 2010 Presidents Budget. *** Strategic Plan (SP) proposed targets are from the new 2009-2014 EPA Strategic Plan, to be submitted to Congress in September 2009.																
	FY 2008 END OF YEAR RESULT			62% (8.9 M lbs)			62% (8.9 M lbs)									
	FY 2008 COMMITMENT			66% (9.48 M lbs)			66% (9.48 M lbs)									
	FY 2007 END OF YEAR RESULT			62% (8.83 M lbs)			62% (8.83 M lbs)									
	FY 2007 COMMITMENT			62% (8.83 M lbs)												
	FY 2005 BASELINE			58% (8.4 million lbs)												
	UNIVERSE			100% (14.36million lbs)												
	National Program Manager Comments	2010 commitment for SP-36 may be lower than target to reflect FY09 End-of Year results and an improved assessment of available and anticipated resources.														
SP-37	Percent of goal achieved for implementation of sediment reduction practices (expressed as progress in meeting the sediment reduction goal of 1.69 million tons from 1985 levels to achieve an annual cap load of 4.15 million tons (based on long-term average hydrology simulations).	OMB PA BUD	71%	67% (1.13 M tons)			67% (1.13 M tons)									83% (1.4 M tons)
	FY 2009 MIDYEAR			64%			64%									
	FY 2009 COMMITMENT			67% (1.13 M tons)			67% (1.13 M tons)									
	FY 2008 END OF YEAR RESULT			64% (1.07 M tons)			64% (1.07 M tons)									
	FY 2008 COMMITMENT			64% (1.08 M tons)			64% (1.08 M tons)									
	FY 2007 END OF YEAR RESULT (updated from ACS)			62% (1.03 M tons)			62% (1.03 M tons)									
	FY 2007 COMMITMENT			62% (1.04 M tons)												
	FY 2005 BASELINE			54% (0.9 million tons)												
	UNIVERSE			100% (1.69 million tons)												
	National Program Manager Comments	2010 NWPG target for SP-37 is lower than the budget target due to the preliminary results for FY09 that indicate we will be far below our FY09 commitment for this measure.														
CB-1a	Percent of point source nitrogen reduction goal of 49.9 million pounds achieved.	OMB PA BUD	79%	74% (36.92 M lbs)			74% (36.92 M lbs)									
	FY 2009 MIDYEAR			67%			67%									
	FY 2009 COMMITMENT			74% (36.92 M lbs)			74% (36.92 M lbs)									
	FY 2008 END OF YEAR RESULT			69%			69%									
	FY 2008 COMMITMENT			74%			74%									

APPENDIX A: FY 2009 Oversight Council Measures

FY 10 ACS Code	FY 2010 National Water Program Guidance Measure Text	*Measure Groups	**FY 2010 Budget Target	FY 2010 National Target	Region 1	Region 2	Region 3	Region 4	Region 5	Region 6	Region 7	Region 8	Region 9	Region 10	HQ	***SP Proposed Target (FY 2014)
* Measure categories include: OMB PA (OMB Program Assessment); BUD (Budget Measure); SG (State Grant Measure); SMM (Senior Management Measure); EQR (EPAStat Quarterly Report Measure); and NPMStat (OW EPAStat measure). ** FY 09 and FY 10 Budget Target is from 4-year performance measure table in the FY 2010 Presidents Budget. *** Strategic Plan (SP) proposed targets are from the new 2009-2014 EPA Strategic Plan, to be submitted to Congress in September 2009.																
	FY 2007 END OF YEAR RESULT			69%			69%									
	FY 2007 COMMITMENT			69%												
	FY 2005 BASELINE			60.95%												
	UNIVERSE			100% (49.9 million lbs/yr)												
	National Program Manager Comments	2010 NWPB target for CB-1a is lower than the budget target due to the preliminary results for FY09 that indicate we will be far below our FY09 commitment for this measure.														
Subobjective 4.3.7 Restore and Protect the South Florida Ecosystem																
SP-45	Achieve 'no net loss' of stony coral cover (mean percent stony coral cover) in the Florida Keys National Marine Sanctuary (FKNMS) and in the coastal waters of Dade, Broward, and Palm Beach Counties, Florida, working with all stakeholders (federal, state, regional, tribal, and local).	BUD	No net loss	No Net Loss				No Net Loss								No Net Loss
	FY 2009 MIDYEAR			Exempt				Exempt								
	FY 2009 COMMITMENT			No Net Loss				No Net Loss								
	FY 2008 END OF YEAR RESULT			Small loss				Small change								
	FY 2008 COMMITMENT (new measure in FY 08)			No Net Loss				No Net Loss								
	FY 2005 BASELINE			6.8% in FKNMS; 5.9% in SE Florida												
	National Program Manager Comments	New measures starting in FY 08. *Strategic Plan baseline of 6.7% was revised to 6.8%. The Coral Reef Evaluation and Monitoring Project (CREMP) for the Florida Keys National Marine Sanctuary was modified in 2006 by dropping one hardbottom monitoring site because of the very small percentage of stony coral cover present (less than .2%), resulting in an increase of .1 percent in the mean percent stony coral cover for the entire Sanctuary. Statistical analyses of the CREMP indicated that sampling a reduced number of stations at sites with low stony coral cover would still produce statistically valid results.														
SP-46	Annually maintain the overall health and functionality of sea grass beds in the FKNMS as measured by the long-term sea grass monitoring project that addresses composition and abundance, productivity, and nutrient availability.	BUD	Maintain	Maintain Baseline				Maintain Baseline								Maintain Baseline
	FY 2009 MIDYEAR			Exempt				Exempt								
	FY 2009 COMMITMENT			Maintain Baseline				Maintain Baseline								
	FY 2008 END OF YEAR RESULT			Not maintained				Small change								
	FY 2008 COMMITMENT (new measure in FY 08)			Maintain Baseline				Maintain Baseline								
	FY 2005 BASELINE			EI = 8.3; SCI=0.48												
	National Program Manager Comments	New measures starting in FY 08. **EI = Elemental Indicator; SCI = Species Composition Index.														

APPENDIX A: FY 2009 Oversight Council Measures

FY 10 ACS Code	FY 2010 National Water Program Guidance Measure Text	*Measure Groups	**FY 2010 Budget Target	FY 2010 National Target	Region 1	Region 2	Region 3	Region 4	Region 5	Region 6	Region 7	Region 8	Region 9	Region 10	HQ	***SP Proposed Target (FY 2014)
* Measure categories include: OMB PA (OMB Program Assessment); BUD (Budget Measure); SG (State Grant Measure); SMM (Senior Management Measure); EQR (EPAStat Quarterly Report Measure); and NPMStat (OW EPAStat measure). ** FY 09 and FY 10 Budget Target is from 4-year performance measure table in the FY 2010 Presidents Budget. *** Strategic Plan (SP) proposed targets are from the new 2009-2014 EPA Strategic Plan, to be submitted to Congress in September 2009.																
SP-47	Annually maintain the overall water quality of the near shore and coastal waters of the FKNMS.	BUD	Maintain	Maintain Baseline				Maintain Baseline								Maintain Baseline
	FY 2009 MIDYEAR			Exempt				Exempt								
	FY 2009 COMMITMENT			Maintain Baseline				Maintain Baseline								
	FY 2008 END OF YEAR RESULT			Not maintained				Small change								
	FY 2008 COMMITMENT (new measure in FY 08)			Maintain Baseline				Maintain Baseline								
	FY 2005 BASELINE	chlorophyll _a ≤ 0.2 ug/l - 43; light attenuation ≤ 0.13/meter - 23; dissolved inorganic nitrogen ≤ 0.75 micromolar - 54; total phosphorus ≤ 0.2 micromolar - 63														
	National Program Manager Comments	New measure starting in FY 08. Baseline numbers are monitoring sites not meeting water quality parameters.														
SP-48	Improve the water quality of the Everglades ecosystem as measured by total phosphorus, including meeting the 10 parts per billion (ppb) total phosphorus criterion throughout the Everglades Protection Area marsh and the effluent limits to be established for discharges from stormwater treatment areas.	BUD	Maintain phosphorus baseline and meet discharge limits	Maintain phosphorus baseline and meet discharge limits				Maintain phosphorus baseline and meet discharge limits								Meet phosphorus criterion and discharge limits
	FY 2009 MIDYEAR			Exempt				Exempt								
	FY 2009 COMMITMENT			Maintain Baseline				Maintain Baseline								
	FY 2008 END OF YEAR RESULT			Not maintained				Not maintained								
	FY 2008 COMMITMENT (new measure in FY 08)			Maintain Baseline				Maintain Baseline								
	National Program Manager Comments	New measure starting in FY 08. *2005 Baseline: Average annual geometric mean phosphorus concentrations were 5 ppb in Everglades National Park, 10 ppb in Water Conservation Area 3A, 13 ppb in Loxahatchee National Wildlife Refuge, and 18 ppb in Water Conservation Area 2A; annual average flow – weighted total phosphorus discharges from Stormwater Treatment Areas ranged from 13 ppb for area 3/4 and 98 ppb for area 1W.														
Subjective 4.3.5 Improve the Health of the Gulf of Mexico																
SP-38	Restore water and habitat quality to meet water quality standards in impaired segments in 13 priority areas. (cumulative starting in FY 07)	BUD	96	96												160
	FY 2009 MIDYEAR			131												
	FY 2009 COMMITMENT			96												
	FY 2008 END OF YEAR RESULT			131												
	FY 2008 COMMITMENT			64												
	FY 2007 END OF YEAR RESULT (not from ACS)			38												





APPENDIX A: FY 2009 Oversight Council Measures

FY 10 ACS Code	FY 2010 National Water Program Guidance Measure Text	*Measure Groups	**FY 2010 Budget Target	FY 2010 National Target	Region 1	Region 2	Region 3	Region 4	Region 5	Region 6	Region 7	Region 8	Region 9	Region 10	HQ	***SP Proposed Target (FY 2014)
* Measure categories include: OMB PA (OMB Program Assessment); BUD (Budget Measure); SG (State Grant Measure); SMM (Senior Management Measure); EQR (EPAStat Quarterly Report Measure); and NPMStat (OW EPAStat measure). ** FY 09 and FY 10 Budget Target is from 4-year performance measure table in the FY 2010 Presidents Budget. *** Strategic Plan (SP) proposed targets are from the new 2009-2014 EPA Strategic Plan, to be submitted to Congress in September 2009.																
	FY 2007 COMMITMENT			56												
	FY 2002 BASELINE			0												
	UNIVERSE			812												
	National Program Manager Comments	*SP-38 replaces FY 07 measure GM-1. FY 07 end-of-year data not from ACS. Universe changed from 354 to 812.														

Appendix B: FY 2009 Mid-Year Measure Results

FY 09 Code	FY 09 National Water Program Guidance Measures	FY 09 Mid-Year Status	FY 09 Mid-Year Nat. total	FY 2009 ACS Commitment	FY 2010 ACS Target
Subobjective 2.1.1 Water Safe to Drink					
2.1.1	Percent of the population served by community water systems that receive drinking water that meets all applicable health-based drinking water standards through approaches including effective treatment and source water protection.	▲	92.7%	90%	90%
SP-1	Percent of community water systems that provide drinking water that meets all applicable health-based drinking water standards.	▲	89.1%	88%	90.00%
SP-2	Percent of "person months" (i.e. all persons served by community water systems times 12 months) during which community water systems provide drinking water that meets all applicable health-based drinking water standards.	▲	97.1%	95%	95%
SP-3	Percent of the population in Indian country served by community water systems that receive drinking water that meets all applicable health-based drinking water standards.	▲	82.3%	82%	87%
SP-4a	Percent of community water systems where risk to public health is minimized by source water protection.	Exempt	N/A	34.20%	41%
SP-4b	Percent of the population served by community water systems where risk to public health is minimized by source water protection.	Exempt	N/A	48.70%	55%
SP-5	Number of homes on tribal lands lacking access to safe drinking water.	Exempt	N/A	28,977	27,367
SDW-1a	Percent of community water systems (CWSs) that have undergone a sanitary survey within the past three years (five years for outstanding performers) as required under the Interim Enhanced and Long-Term I Surface Water Treatment Rules.	Exempt	N/A	92%	95%

Appendix B: FY 2009 Mid-Year Measure Results

FY 09 Code	FY 09 National Water Program Guidance Measures	FY 09 Mid-Year Status	FY 09 Mid-Year Nat. total	FY 2009 ACS Commitment	FY 2010 ACS Target
SDW-1b	Number of tribal community water systems (CWSs) that have undergone a sanitary survey within the past three years (five years for outstanding performers) as required under the Interim Enhanced and Long-Term I Surface Water Treatment Rules.		54	49	70
SDW-2	Percent of the data for violations of health-based standards at public water systems that is accurate and complete in SDWIS-FED for all maximum contaminant level and treatment technique rules (excluding the Lead and Copper Rule.)	Exempt	N/A	Indicator	Indicator
SDW-3	Percent of the Lead and Copper Rule action level data for community water systems serving over 3,300 people that is complete in SDWIS-FED.	Exempt	N/A	Indicator	Indicator
SDW-4	Fund utilization rate [cumulative dollar amount of loan agreements divided by cumulative funds available for projects] for the Drinking Water State Revolving Fund (DWSRF).	Exempt	N/A	83%	89%
SDW-5	Number of Drinking Water State Revolving Fund (DWSRF) projects that have initiated operations.	Exempt	N/A	4,015	4,532
SDW-6	Percent of identified Class V Motor Vehicle Waste Disposal wells that are closed or permitted.		89.0%	77%	Not in FY 2010
SDW-7a	Percent of deep injection wells that are used to inject industrial, municipal, or hazardous waste (Class I) that lose mechanical integrity and are returned to compliance within 180 days, thereby reducing the potential to endanger underground sources of drinking water.		100.0%	89%	92%
SDW-7b	Percent of deep injection wells that are used to enhance oil recovery or that are used for the disposal or storage of other oil production related activities (Class II), that lose mechanical integrity and are returned to compliance within 180 days, thereby reducing the potential to endanger underground sources of drinking water.		90.0%	87%	89%

Appendix B: FY 2009 Mid-Year Measure Results

FY 09 Code	FY 09 National Water Program Guidance Measures	FY 09 Mid-Year Status	FY 09 Mid-Year Nat. total	FY 2009 ACS Commitment	FY 2010 ACS Target
SDW-7c	Percent of deep injection wells that are used for salt solution mining (Class III) that lose mechanical integrity and are returned to compliance within 180 days, thereby reducing the potential to endanger underground sources of drinking water.	▲	100.0%	89%	93%
SDW-8	Number, and national percent, of high priority Class V wells identified in ground water based community water system source water areas that are closed or permitted.	▲	81.0%	74%	76%
SDW-9	Percent of community water system intakes for which the source water was assessed for the drinking water use during the most recent reporting cycle.	Exempt	N/A	Indicator	Indicator
SDW-10a	Percent of waterbody impairments identified by States in 2002, in which there is a community water system intake and the impairment cause is for either a drinking water use or a pollutant that is regulated as a drinking water contaminant, for which there is a TMDL.	Exempt	N/A	Indicator	Indicator
SDW-10b	Percent of waterbody impairments identified by States in 2002, in which there is a community water system intake and the impairment cause is for either a drinking water use or a pollutant that is regulated as a drinking water contaminant, for which the waterbody impairments have been restored.	Exempt	N/A	Indicator	Indicator
Subjective 2.1.2 Fish and Shellfish Safe to Eat					
SP-6	Percent of women of childbearing age having mercury levels in blood above the level of concern.	Exempt	N/A	5.20%	5.10%
SP-7	Percent of state-monitored shellfish growing acres impacted by anthropogenic sources that are approved or conditionally approved for use.	Exempt	N/A	65% to 85%	Not in FY 2010

Appendix B: FY 2009 Mid-Year Measure Results

FY 09 Code	FY 09 National Water Program Guidance Measures	FY 09 Mid-Year Status	FY 09 Mid-Year Nat. total	FY 2009 ACS Commitment	FY 2010 ACS Target
FS-1a	Percent of river miles where fish tissue will be assessed to support waterbody-specific or regional consumption advisories or a determination that no consumption advice is necessary. (Great Lakes measured separately; AK not included.)	Exempt	N/A	Indicator	Indicator
FS-1b	Percent of lake acres where fish tissue will be assessed to support waterbody-specific or regional consumption advisories or a determination that no consumption advice is necessary. (Great Lakes measured separately; AK not included.)	Exempt	N/A	Indicator	Indicator
Subobjective 2.1.3 Water Safe for Swimming					
SP-8	Number of waterborne disease outbreaks attributable to swimming in or other recreational contact with coastal and Great Lakes waters, measured as a 5-year average.	Exempt	N/A	2	2
SP-9	Percent of days of the beach season that coastal and Great Lakes beaches monitored by state beach safety programs are open and safe for swimming.	Exempt	N/A	93.00%	95.00%
SS-1	Number and national percent, using a constant denominator, of Combined Sewer Overflow (CSO) permits with a schedule incorporated into an appropriate enforceable mechanism, including a permit or enforcement order, with specific dates and milestones, including a completion date consistent with Agency guidance, which requires: 1) Implementation of a Long Term Control Plan (LTCP) which will result in compliance with the technology and water quality-based requirements of the Clean Water Act; or 2) implementation of any other acceptable CSO control measures consistent with the 1994 CSO Control Policy; or 3) completion of separation after the baseline date. (cumulative)	▲	635	668	707
SS-2	Percent of all Tier I (significant) public beaches that are monitored and managed under the BEACH Act program.	Exempt	N/A	99%	99%

Appendix B: FY 2009 Mid-Year Measure Results

FY 09 Code	FY 09 National Water Program Guidance Measures	FY 09 Mid-Year Status	FY 09 Mid-Year Nat. total	FY 2009 ACS Commitment	FY 2010 ACS Target
Subobjective 2.2.1 Improve Water Quality on a Watershed Basis					
SP-10	Number of waterbodies identified in 2002 as not attaining water quality standards where standards are now fully attained. (cumulative)	▲	2,261	2,272	2,525
SP-11	Remove the specific causes of waterbody impairment identified by states in 2002. (cumulative)	◉	6,929	6,891	7,720
SP-12	Improve water quality conditions in impaired watersheds nationwide using the watershed approach. (cumulative)	▲	82	102	128
SP-13	Ensure that the condition of the Nation's wadeable streams does not degrade (i.e., there is no statistically significant increase in the percent of streams rated "poor" and no statistically significant decrease in the streams rated "good.")	Exempt	N/A	N/A	N/A
SP-14	Improve water quality in Indian country at monitoring stations in tribal waters (i.e., show improvement in one or more of seven key parameters: dissolved oxygen, pH, water temperature, total nitrogen, total phosphorus, pathogen indicators, and turbidity.)	Exempt	N/A	N/A	N/A
SP-15	By 2015, in coordination with other federal agencies, reduce by 50 percent the number of homes on tribal lands lacking access to basic sanitation. (cumulative)	N/A	N/A	20,101	18,985
WQ-1a	Number of States and Territories that have adopted EPA approved nutrient criteria into their water quality standards. (cumulative)	▲	10	12	20

Appendix B: FY 2009 Mid-Year Measure Results

FY 09 Code	FY 09 National Water Program Guidance Measures	FY 09 Mid-Year Status	FY 09 Mid-Year Nat. total	FY 2009 ACS Commitment	FY 2010 ACS Target
WQ-1b	Number of States and Territories that are on schedule with a mutually agreed-upon plan to adopt nutrient criteria into their water quality standards. (annual)	▲	25.0	33	33
WQ-2	Number of Tribes that have water quality standards approved by EPA. (cumulative)	▼	25	37	40
WQ-3a	Number, and national percent, of States and Territories that within the preceding three year period, submitted new or revised water quality criteria acceptable to EPA that reflect new scientific information from EPA or other resources not considered in the previous standards.	▼	54%	59%	66%
WQ-3b	Number, and national percent of Tribes that within the preceding three year period, submitted new or revised water quality criteria acceptable to EPA that reflect new scientific information from EPA or other resources not considered in the previous standards.	◉	15	15	20
WQ-4a	Percent of State/Territorial water quality standards submissions (received in the 12 month period ending April 30th of the fiscal year) that are approved by EPA. Partial approvals receive fractional credit.	▲	89%	85%	85%
WQ-4b	Percent of Tribal water quality standards submissions (received in the 12 month period ending April 30th of the fiscal year) that are approved by EPA. Partial approvals receive fractional credit.	▲	100.0%	66.80%	70%
WQ-5	Number of States and Territories that have adopted and are implementing their monitoring strategies in keeping with established schedules.	▲	53	56	56
WQ-6a	Number of Tribes that currently receive funding under Section 106 of the Clean Water Act that have developed and begun implementing monitoring strategies that are appropriate to their water quality program consistent with EPA Guidance.	▲	107	128	157

Appendix B: FY 2009 Mid-Year Measure Results

FY 09 Code	FY 09 National Water Program Guidance Measures	FY 09 Mid-Year Status	FY 09 Mid-Year Nat. total	FY 2009 ACS Commitment	FY 2010 ACS Target
WQ-6b	Number of Tribes that are providing water quality data in a format accessible for storage in EPA's data system.	▲	56	73	118
WQ-7	Number of States and Territories that provide electronic information using the Assessment Database version 2 or later (or compatible system) and geo-reference the information to facilitate the integrated reporting of assessment data. (cumulative)	◉	43	43	44
WQ-8a	Number, and national percent, of approved TMDLs, that are developed by States and approved by EPA or established by EPA [Total TMDLs] on a schedule consistent with national policy.	▲	2,089	3,097	2,623
WQ-8b	Number, and national percent, of approved TMDLs, that are developed by States and approved by EPA [State TMDLs] on a schedule consistent with national policy.	▲	2,044	2,951	2,572
WQ-9a	Estimated annual reduction in million pounds of nitrogen from nonpoint sources to waterbodies (Section 319 funded projects only).	Exempt	N/A	8.5 million lbs	8.5 million lbs
WQ-9b	Estimated annual reduction in million pounds of phosphorus from nonpoint sources to waterbodies (Section 319 funded projects only).	Exempt	N/A	4.5 million lbs	4.5 million lbs
WQ-9c	Estimated annual reduction in million tons of sediment from nonpoint sources to waterbodies (Section 319 funded projects only).	Exempt	N/A	700,000 tons	700,000 tons
WQ-10	Number of waterbodies identified by States (in 2000 or subsequent years) as being primarily nonpoint source (NPS)-impaired that are partially or fully restored. (cumulative)	▼	106	134	184

Appendix B: FY 2009 Mid-Year Measure Results

FY 09 Code	FY 09 National Water Program Guidance Measures	FY 09 Mid-Year Status	FY 09 Mid-Year Nat. total	FY 2009 ACS Commitment	FY 2010 ACS Target
WQ-11	Number, and national percent, of follow-up actions that are completed by assessed NPDES (National Pollutant Discharge Elimination System) programs. (cumulative)	Indicator	221	Indicator	Indicator
WQ-12a	Number, and national percent, of facilities covered by NPDES permits that are considered current.	▲	90%	89.50%	88%
WQ-12b	Number, and national percent, of tribal facilities covered by NPDES permits that are considered current.	▼	82%	88%	87%
WQ-13a	Number, and national percent, of facilities covered under either an individual or general MS-4 permit.	Indicator	6,534	Indicator	Indicator
WQ-13b	Number, and national percent, of facilities covered under either an individual or general industrial storm water permit.	Indicator	78,931	Indicator	Indicator
WQ-13c	Number of facilities covered under either an individual or general construction storm water site permit.	Indicator	170,442	Indicator	Indicator
WQ-13d	Number of facilities covered under either an individual or general CAFO permit.	Indicator	7,973	Indicator	Indicator
WQ-14a	Number, and national percent, of Significant Industrial Users (SIUs) in POTWs with Pretreatment Programs that have control mechanisms in place that implement applicable pretreatment requirements.	▲	21,469	21,785	21,495
WQ-14b	Number, and national percent, of Categorical Industrial Users (CIUs) in non-pretreatment POTWs that have control mechanisms in place that implement applicable pretreatment requirements.	Indicator	1,322	Indicator	Indicator
WQ-15a	Percent of major dischargers in Significant Noncompliance (SNC) at any time during the fiscal year.	Exempt	N/A	22.50%	22.50%
WQ-15b	Of the major dischargers in Significant Noncompliance (SNC) at any time during the fiscal year, the number, and national percent, discharging pollutant(s) of concern on impaired waters.	Exempt	N/A	Indicator	Indicator

Appendix B: FY 2009 Mid-Year Measure Results

FY 09 Code	FY 09 National Water Program Guidance Measures	FY 09 Mid-Year Status	FY 09 Mid-Year Nat. total	FY 2009 ACS Commitment	FY 2010 ACS Target
WQ-16	Number, and national percent, of all major publicly-owned treatment works (POTWs) that comply with their permitted wastewater discharge standards. (i.e. POTWs that are not in significant non-compliance)	Exempt	N/A	86%	86%
WQ-17	Fund utilization rate [cumulative loan agreement dollars to the cumulative funds available for projects] for the Clean Water State Revolving Fund (CWSRF).	Exempt	N/A	93.00%	94.50%
WQ-19a	Number, and national percent, of high priority state NPDES permits that are issued as scheduled.	▲	432 (62%)	670 (95%)	694 (95%)
WQ-19b	Number, and national percent, of high priority state and EPA (including tribal) NPDES permits that are issued as scheduled.	▲	451 (58%)	743 (95%)	788 (95%)
WQ-20	Number of facilities that have traded at least once plus all facilities covered by an overlay permit that incorporates trading provisions with an enforceable cap.	Indicator	394	Indicator	Indicator
WQ-21	Number of water segments identified as impaired in 2002 for which States and EPA agree that initial restoration planning is complete (i.e., EPA has approved all needed TMDLs for pollutants causing impairments to the waterbody or has approved a 303(d) list that recognizes that the waterbody is covered by a Watershed Plan [i.e., Category 4b or Category 5m]). (cumulative)	Indicator	7,675	Indicator	Indicator

Appendix B: FY 2009 Mid-Year Measure Results

FY 09 Code	FY 09 National Water Program Guidance Measures	FY 09 Mid-Year Status	FY 09 Mid-Year Nat. total	FY 2009 ACS Commitment	FY 2010 ACS Target
Subobjective 2.2.2 Improve Coastal and Ocean Waters					
2.2.2	Prevent water pollution and protect coastal and ocean systems to improve national and regional coastal aquatic system health on the 'good/fair/poor' scale of the National Coastal Condition Report.	Exempt	N/A	2.4	2.8
SP-16	Maintain aquatic ecosystem health on the 'good/fair/poor' scale of the National Coastal Condition Report in the Northeast Region.	Exempt	N/A	1.8	2.4
SP-17	Maintain aquatic ecosystem health on the 'good/fair/poor' scale of the National Coastal Condition Report in the Southeast Region.	Exempt	N/A	3.8	3.6
SP-18	Maintain aquatic ecosystem health on the 'good/fair/poor' scale of the National Coastal Condition Report in the West Coast Region.	Exempt	N/A	2	2.4
SP-19	Maintain aquatic ecosystem health on the 'good/fair/poor' scale of the National Coastal Condition Report in Puerto Rico.	Exempt	N/A	1.7	1.7
SP-20	Percent of active dredged material ocean dumping sites that will have achieved environmentally acceptable conditions (as reflected in each site's management plan and measured through on-site monitoring programs).	▲	97.70%	98%	95%
4.3.2	Working with partners, protect or restore additional acres of habitat within the study areas for the 28 estuaries that are part of the National Estuary Program (NEP).	Exempt	N/A	100,000	100,000
CO-1	Number of coastal waterbody impairments restored.	Exempt	N/A	Indicator	Indicator
CO-2	Number of coastline miles protected from vessel sewage by 'no discharge zone(s).' (cumulative)	Indicator	33,758,427	Indicator	Indicator

Appendix B: FY 2009 Mid-Year Measure Results

FY 09 Code	FY 09 National Water Program Guidance Measures	FY 09 Mid-Year Status	FY 09 Mid-Year Nat. total	FY 2009 ACS Commitment	FY 2010 ACS Target
CO-3	Number of National Estuary Program priority actions in Comprehensive Conservation and Management Plans (CCMPs) that have been completed. (cumulative)	Exempt	N/A	Indicator	Indicator
CO-4	Rate of return on Federal investment for the National Estuary Programs [dollar value of 'primary' leveraged resources (cash or in-kind) divided by Section 320 funds].	Exempt	N/A	Indicator	Indicator
CO-5	Number of dredged material management plans that are in place for major ports and harbors.	Indicator	24	Indicator	Indicator
CO-6	Number of active dredged material ocean dumping sites that are monitored in the reporting year.	Indicator	23	Indicator	Indicator
Subobjective 4.3.1 Increase Wetlands					
SP-21	Working with partners, achieve a net increase of acres of wetlands per year with additional focus on biological and functional measures and assessment of wetland condition. (cumulative)	Exempt	N/A	100,000	100,000
SP-22	In partnership with the U.S. Army Corps of Engineers, states and tribes, achieve 'no net loss' of wetlands each year under the Clean Water Act Section 404 regulatory program.	Exempt	N/A	No net loss	No net loss
WT-1	Number of wetland acres restored and enhanced, under the President's 2004 Earth Day Initiative. (cumulative)	N/A	N/A	88,000	96,000
WT-2a	Number of States that have built capacities in wetland monitoring, regulation, restoration, water quality standards, mitigation compliance, and partnership building.	Indicator	13	Indicator	Indicator
WT-2b	Number of Tribes that have built capacities in wetland monitoring, regulation, restoration, water quality standards, mitigation compliance, and partnership building.	Indicator	12	Indicator	Indicator

Appendix B: FY 2009 Mid-Year Measure Results

FY 09 Code	FY 09 National Water Program Guidance Measures	FY 09 Mid-Year Status	FY 09 Mid-Year Nat. total	FY 2009 ACS Commitment	FY 2010 ACS Target
WT-3	Percent of Clean Water Act Section 404 standard permits, upon which EPA coordinated with the permitting authority (i.e., Corps or State), where a final permit decision in FY 08 documents requirements for greater environmental protection* than originally proposed.	Exempt	N/A	Indicator	Indicator
WT-4	Number of States where the trend in wetland condition has been measured as defined through biological metrics and assessments. (cumulative)	▲	19	13	19
Subobjective 4.2.4 Sustain and Restore the U.S.-Mexico Border Environmental Health					
SP-23	Number of currently exceeded water quality standards in impaired transboundary segments of U.S. surface waters.	Exempt	N/A	N/A	N/A
SP-24	Provide safe drinking water to homes in the U.S.- Mexico Border area that lacked access to safe drinking water in 2003.	▼	19	1,500	700
SP-25	Provide adequate wastewater sanitation to homes in the U.S.- Mexico Border area that lacked access to wastewater sanitation in 2003.	▼	37,413	105,500	14,700
Subobjective 4.2.5 Sustain and Restore Pacific Island Territories					
SP-26	Percent of population in each of the U.S. Pacific Island Territories served by community drinking water systems that receive drinking water that meets all applicable health-based drinking water standards throughout the year.	▲	79%	73%	73%
SP-27	Percent of the time that the sewage treatment plants in the U.S. Pacific Island Territories comply with permit limits for biochemical oxygen demand (BOD) and total suspended solids (TSS).	▲	75%	62%	62%
SP-28	Percent of days of the beach season that beaches in each of the U.S. Pacific Island Territories monitored under the Beach Safety Program will be open and safe for swimming.	▲	82%	80%	80%

Appendix B: FY 2009 Mid-Year Measure Results

FY 09 Code	FY 09 National Water Program Guidance Measures	FY 09 Mid-Year Status	FY 09 Mid-Year Nat. total	FY 2009 ACS Commitment	FY 2010 ACS Target
Subobjective 4.3.3 Improve the Health of the Great Lakes					
4.3.3	Prevent water pollution and protect aquatic systems to improve the overall aquatic ecosystem health of the Great Lakes using the Great Lakes 40-point scale.	▲	23.70	22.50	23.00
SP-29	Maintain or improve an average annual 5% decline for the long-term trend in average concentrations of PCBs in whole lake trout and walleye samples.	Exempt	N/A	5%	5%
SP-30	Maintain or improve an average annual 7% decline for the long-term trend in average concentrations of toxic chemicals (PCBs) in the air in the Great Lakes basin.	Exempt	N/A	7%	7%
SP-31	Restore and de-list Areas of Concern (AOCs) within the Great Lakes basin.	▼	1	2	3
SP-32	Remediate cubic yards (in millions) of contaminated sediment in the Great Lakes.	▲	5.69 million	5.9 million	6.4 million
GL-1	Number, and percent of all NPDES permitted discharges to the Lakes or major tributaries that have permit limits that reflect the Guidance's water quality standards, where applicable.	▲	2,908	2,776	2,815
GL-2	Number and percent of Combined Sewer Overflow (CSO) permits in the Great Lakes basin with schedules in place in permits or other enforceable mechanisms to implement approved Long Term Control Plans (LTCPs). (cumulative)	▲	127	136	137
GL-3	Percent of high priority Tier 1 (significant) Great Lakes beaches where States and local agencies have put into place water quality monitoring and public notification programs that comply with the U.S. EPA National Beaches Guidance.	Exempt	N/A	100%	100%

Appendix B: FY 2009 Mid-Year Measure Results

FY 09 Code	FY 09 National Water Program Guidance Measures	FY 09 Mid-Year Status	FY 09 Mid-Year Nat. total	FY 2009 ACS Commitment	FY 2010 ACS Target
GL-4	The percentage of near term Great Lakes Actions completed or are on track.	▲	5	1	1
GL-5	Number of Beneficial Use Impairments removed within Areas of Concern	▲	11	21	26
Subobjective 4.3.4 Improve the Health of the Chesapeake Bay Ecosystem					
SP-33	Percent of Submerged Aquatic Vegetation goal of 185,000 acres achieved, based on annual monitoring from prior year.	Exempt	N/A	N/A	N/A
SP-34	Percent of Dissolved Oxygen goal of 100% standards attainment achieved, based on annual monitoring from the previous calendar year and the preceeding 2 years.	Exempt	N/A	N/A	N/A
SP-35	Percent of the implementation goal for nitrogen reduction practices necessary to achieve Chesapeake Bay water quality standards, expressed as a nitrogen reduction in relation to achieving a 162.5 million pound reduction from 1985 levels (based on long-term average hydrology simulations).	▼	47%	50%	52%
SP-36	Percent of the implementation goal for phosphorus reduction practices necessary to achieve Chesapeake Bay water quality standards, expressed as phosphorus reduction in relation to achieving a 14.36 million pound reduction from 1985 levels (based on long-term average hydrology simulations).	▼	63%	64%	66%
SP-37	Percent of the implementation goal for sediment reduction practices necessary to achieve Chesapeake Bay water quality standards, expressed as sediment reduction in relation to achieving a 1.69 million ton reduction from 1985 levels (based on long-term average hydrology simulations).	▼	64%	67%	67%
CB-1a	Percent of the point source nitrogen reduction goal achieved.	▼	67%	74%	74%

Appendix B: FY 2009 Mid-Year Measure Results

FY 09 Code	FY 09 National Water Program Guidance Measures	FY 09 Mid-Year Status	FY 09 Mid-Year Nat. total	FY 2009 ACS Commitment	FY 2010 ACS Target
CB-1b	Percent of the point source phosphorus reduction goal achieved.	▲	91%	87%	89%
CB-2	Percent of the forest buffer planting goal achieved.	▲	62%	62%	65%
Subobjective 4.3.5 Improve the Health of the Gulf of Mexico					
4.3.5	Improve the overall health of coastal waters of the Gulf of Mexico on the "good/fair/poor" scale of the National Coastal Condition Report.	Exempt	N/A	2.5	2.5
SP-38	Restore water and habitat quality to meet water quality standards in impaired segments in 13 priority areas. (cumulative starting in FY 07)	▲	131	96	96
SP-39	Restore, enhance, or protect a cumulative number of acres of important coastal and marine habitats. (cumulative starting in FY 07)	N/A	N/A	20,660	27,500
SP-40	Reduce releases of nutrients throughout the Mississippi River Basin to reduce the size of the hypoxic zone in the Gulf of Mexico, as measured by the 5-year running average of the size of the zone.	Exempt	N/A	N/A	N/A
GM-1	Implement integrated bi-national (U.S. and Mexican Border States) early-warning system to support State and coastal community efforts to manage harmful algal blooms (HABs).	◉	Expand system	Expand system to Campeche, MX	Expand system to Tabasco, MX
GM-3a	The percentage of near term actions in the Gulf of Mexico Alliance Governors' Action Plan that are completed or on track.	▲	23	10	15
GM-3b	Number of near term actions in the Gulf of Mexico Alliance Governors' Action Plan that are completed.	▲	50	63	5

Appendix B: FY 2009 Mid-Year Measure Results

FY 09 Code	FY 09 National Water Program Guidance Measures	FY 09 Mid-Year Status	FY 09 Mid-Year Nat. total	FY 2009 ACS Commitment	FY 2010 ACS Target
Subobjective 4.3.6 Restore and Protect Long Island Sound					
SP-41	Reduce point source nitrogen discharges to Long Island Sound as measured by the Long Island Sound Nitrogen Total Maximum Daily Load (TMDL).	N/A	N/A	34,898	65% (New measure language)
SP-42	Reduce the size of the hypoxic area in Long Island Sound (i.e., defined as the area in which the long-term average maximum July-September dissolved oxygen level is <3mg/l b; reduce the average duration of the maximum hypoxic event.)	Exempt	N/A	N/A	
SP-43	Restore or protect acres of coastal habitat, including tidal wetlands, dunes, riparian buffers, and freshwater wetlands.	🟢	1,376	1,225	33% (New measure language)
SP-44	Reopen miles of river and stream corridor to anadromous fish passage through removal of dams and barriers or installations of by-pass structures such as fishways. (cumulative starting in FY 06)	🟢	146.05	144	33% (New measure language)
Subobjective 4.3.7 Restore and Protect the South Florida Ecosystem					
SP-45	Achieve 'no net loss' of stony coral cover (mean percent stony coral cover) in the Florida Keys National Marine Sanctuary (FKNMS) and in the coastal waters of Dade, Broward, and Palm Beach Counties, Florida, working with all stakeholders (federal, state, regional, and local).	Exempt	N/A	No net loss	Not net loss
SP-46	Annually maintain the overall health and functionality of sea grass beds in the FKNMS as measured by the long-term sea grass monitoring project that addresses composition and abundance, productivity, and nutrient availability.	Exempt	N/A	Maintain baseline	Maintain baseline
SP-47	Annually maintain the overall water quality of the near shore and coastal waters of the FKNMS.	Exempt	N/A	Maintain baseline	Maintain baseline

Appendix B: FY 2009 Mid-Year Measure Results

FY 09 Code	FY 09 National Water Program Guidance Measures	FY 09 Mid-Year Status	FY 09 Mid-Year Nat. total	FY 2009 ACS Commitment	FY 2010 ACS Target
SP-48	Improve the water quality of the Everglades ecosystem as measured by total phosphorus, including meeting the 10 parts per billion (ppb) total phosphorus criterion throughout the Everglades Protection Area marsh and the effluent limits to be established for discharges from Stormwater Treatment Areas.	Exempt	N/A	Maintain baseline	Maintain phos. baseline and meet discharge limits
Subobjective 4.3.8 Restore and Protect the Puget Sound Basin					
SP-49	Improve water quality and enable the lifting of harvest restrictions in acres of shellfish bed growing areas impacted by degraded or declining water quality. (cumulative starting in FY 07)	Exempt	N/A	600	1,800
SP-50	Remediate acres of prioritized contaminated sediments. (cumulative starting in FY 07)	Exempt	N/A	123	123
SP-51	Restore acres of tidally- and seasonally-influenced estuarine wetlands. (cumulative starting in FY 07)	Exempt	N/A	5,700	6,500
Subobjective 4.3.9 Restore and Protect the Columbia River Basin					
SP-52	Protect, enhance, or restore acres of wetland habitat and acres of upland habitat in the Lower Columbia River watershed. (cumulative starting in FY 07)	Exempt	N/A	10,000	14,250
SP-53	Clean up acres of known contaminated sediments. (cumulative starting in FY 07)	Exempt	N/A	5	20
SP-54	Demonstrate a reduction in mean concentration of contaminants of concern found in water and fish tissue.	Exempt	N/A	5	20