



ADA044550

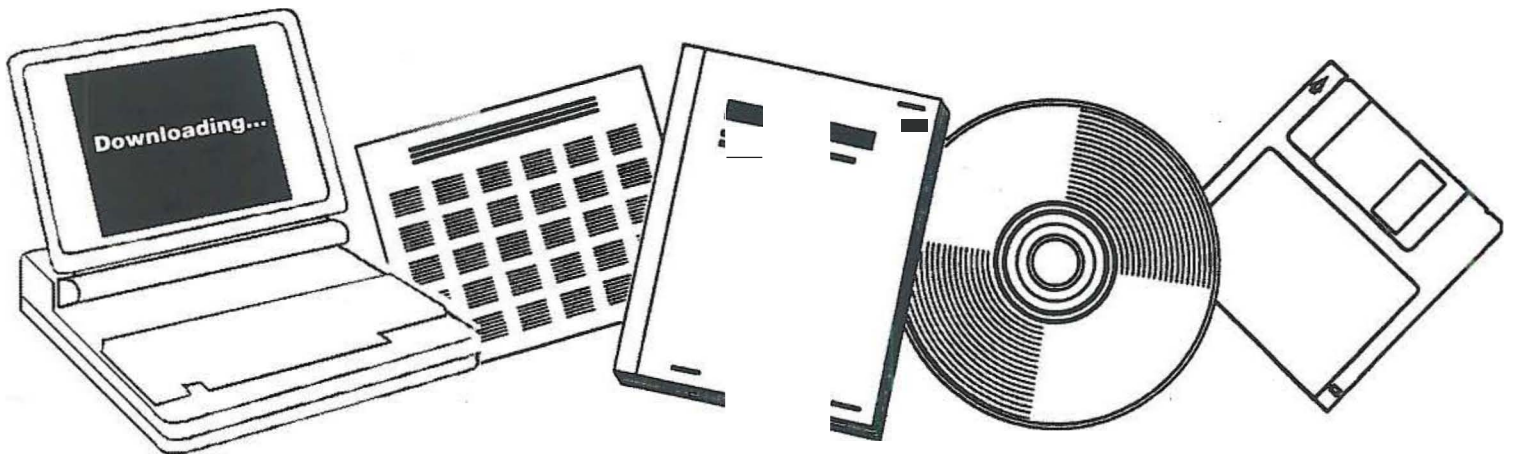
NTIS

One Source. One Search. One Solution.

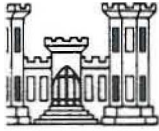
THE DEVELOPMENT OF FISHERY COMPARTMENTS AND POPULATION RATE COEFFICIENTS FOR USE IN RESERVOIR ECOSYSTEM MODELING

ARMY ENGINEER WATERWAYS EXPERIMENT
STATION VICKSBURG MISS

JUN 1977



U.S. Department of Commerce
National Technical Information Service



CONTRACT REPORT Y-77-1

THE DEVELOPMENT OF FISHERY COMPARTMENTS AND POPULATION RATE COEFFICIENTS FOR USE IN RESERVOIR ECOSYSTEM MODELING

by

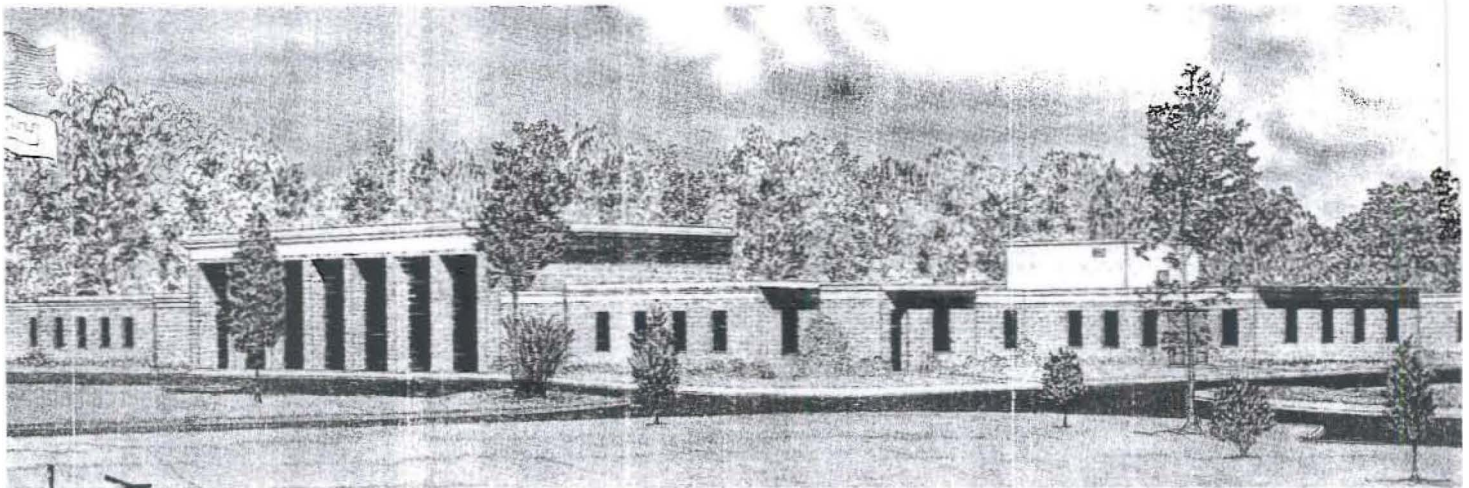
George R. Leidy, Robert M. **Jenkins**

USDI **Fish** and **Wildlife** Service
National Reservoir Research Program
Fayetteville, Arkansas

June 1977

Final Report

Approved For Public Release; Distribution Unlimited



Prepared for **Office, Chief of Engineers**, U. S. Army
Washington, D. C. 20314

Monitored by Environmental **Effects Laboratory**
U. S. Army Engineer **Waterways** Experiment **Station**
P. O. Box 631, Vicksburg, Miss. 39180

Under Agreement No. WES-76-2

Unclassified

SECURITY CLASSIFICATION OF THIS PAGE (When Data Entered)

12

REPORT DOCUMENTATION PAGE

READ INSTRUCTIONS BEFORE COMPLETING FORM

1. REPORT NUMBER Contract Report 1-77-1 ✓	2. GOVT ACCESSION NO.	3. RECIPIENT'S CATALOG NUMBER 9
4. TITLE (and Subtitle) THE DEVELOPMENT OF FISHERY COMPARTMENTS AND POPULATION RATE COEFFICIENTS FOR USE IN RESERVOIR ECOSYSTEM MODELING.	5. TYPE OF REPORT & PERIOD COVERED Final report	
7. AUTHOR George B. Reidy Robert A. Jenkins	6. PERFORMING ORG. REPORT NUMBER	
9. PERFORMING ORGANIZATION NAME AND ADDRESS US Fish and Wildlife Service National Reservoir Research Program Fayetteville, Arkansas 72701	8. CONTRACT OR GRANT NUMBER(s) Agreement o. WES-76-2	
11. CONTROLLING OFFICE NAME AND ADDRESS Office, Chief of Engineers, U. S. Army Washington, D. C. 20314	12. REPORT DATE June 1977	10. PROGRAM ELEMENT, PROJECT, TASK AREA & WORK UNIT NUMBERS
10. CONTROLLING AGENCY NAME & ADDRESS (if different from Controlling Office) Environmental Effects Laboratory U. S. Army Engineer Waterways Experiment Station P. O. Box 631, Vicksburg, Miss. 39180	13. NUMBER OF PAGES 134	15. SECURITY CLASS. (of this report) Unclassified
15. DECLASSIFICATION/DOWNGRADING SCHEDULE		

6
12

11

16. DISTRIBUTION STATEMENT (of this Report)

Approved for public release; distribution unlimited.

12 2/1/77

17. DISTRIBUTION STATEMENT (of this abstract included in Block 20, if different from Report)

12 WES-CR-Y-77-1

D D C
SEP 26 1977
AR 2051750

18. SUPPLEMENTARY NOTES

19. KEY WORDS (Continue on ... if necessary and identify by block number)

- Ecology
- Ecosystems
- Fisheries
- Fishes
- Models
- Reservoirs

20. ABSTRACT (Continue ... if necessary and identify by block number)

The results of analyses designed to develop model fishery compartments and associated fish population rate coefficients on a regional basis for use in reservoir ecosystem modeling are presented. Emphasis is directed toward development of regional rate coefficients for the United States corresponding to major geographical drainage areas. Fishery data will be incorporated in the reservoir ecosystem model currently being developed by personnel of the Environmental Effects Laboratory, U. S. Army Engineer Waterways Experiment Station.

(Continued)

meat
hug

77

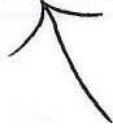
20. _ ABSTRACT (Continued).

cont. Known physical, chemical, and fishery conditions in 187 Corps of Engineers (CE) impoundments larger than 500 acres are described. Multivariable equations are presented that allow estimation of standing crop and sport fish harvest in CE reservoirs.

The development of fishery compartments and population rate coefficient is described. Five fish compartments and their corresponding food compartments were developed to describe the feeding of reservoir fish populations. The fish compartments are p. scivores, planktivores, benthos feeders, detritivores, and fish that feed on terrestrial food sources. The five food compartments corresponding to these fish compartments are, respectively, prey fishes, zooplankton, benthos, organic, detritus, and terrestrial organisms. Fish biomass is proportioned among these compartments on a regional basis.

The relations among fishery compartments and to other fish population parameters were investigated. Where applicable, regional rate coefficients were developed for fish production, reproduction, recruitment, growth, mortality, and sport and commercial harvest.

Data were also reviewed and summarized on the ecological growth and assimilation efficiencies of fish, food consumption rates, respiration rates, temperature tolerances, half-saturation constants for growth, and chemical composition. Text and appendices detail the results of these various studies.



PREFACE

The work described in this report **was** performed under cooperative agreement No. WES-76-2, between the U. S. **Army** Engineer Waterways Experiment Station (WES), Environmental Effects Laboratory (EEL), Vicksburg, Mississippi, and the U. S. Department of the Interior, Fish and Wildlife Service, National Reservoir Research **Program** (NRRP), Fayetteville, Arkansas, signed 3 November 1975. The research **was** funded through the Civil Works Environmental Impact Research Program, Office, Chief of Engineers (aCE).

The research **was** conducted and the report **written** by Mr. G. R. Leidy and Mr. R. M. Jenkins of the NRRP. The efforts of Mrs. J. A. Bilbrey for typing and proofing the text, tables, figures, and appendices of this report are acknowledged.

Dr. K. W. Thornton, Ecosystem Research and Simulation Division (ERSD), EEL, **was** the Contract Monitor and was responsible for the performance of the agreement. The study was under the supervision of Mr. D. L. Robey, Chief, Ecosystem Modeling Branch, ERSD, and Dr. R. L. Eley, Chief, ERSD, and the general supervision of Dr. J. Harrison, Chief, EEL. The aCE Technical Monitor **was** Mr. John Bushman.

Commanders and Directors of WES during the study and preparation of this report were COL G. H. Hilt, CE, and COL J. L. Cannon, CEo. Technical Director was Mr. F. R. Brown.

ACCESSION for		
NTIS		
UNANNOUNCED		
JUSTICE		
BY		
DISTRIBUTION/AVAILABILITY NOTES		
Dist.	STATE	SEC. CIAL
P		

CONTENTS

	Page
PREFACE	1
CONVERSION FACTORS, U.S. TO METRIC UNITS OF MEASUREMENT	7
PART I: INTRODUCTION	8
PART II: DESCRIPTIVE DATA FOR CE RESERVOIRS	12
Physical and Chemical Descriptions of Reservoirs.	12
Fishery Description of CE Reservoirs.	12
Field Estimates of Fish Standing Crop	17
Field Estimates of Fish Harvest	20
Predicted Standing Crop and Sport Fish Harvest for CE Reservoirs.	22
PART III: THE FISHERY MODEL DATA BASE	24
Fish and Fish Food Compartments	24
Description of fish food compartments	25
Description of fish compartments.	28
Distribution of Fish Biomass Among Model Compartments	29
Concepts of Fish Carrying Capacity and Fish Production	31
Carrying capacity	31
Production and the relationship to growing season	31
Fish Reproduction	34
Estimating fish reproduction	35
Regional variations	38
Fish Recruitment	42
Distribution of Fish Harvest Among Model Compartments	51
Fish Growth Rates	51
Half-Saturation Constants for Fish Growth	54
Digestive Efficiencies of Fish	58
Fish Mortality Rates	60
Fish Respiration Rates	62
Types of respiration	62
Effect of temperature and fish weight	63
Effects of fish activity	65
Temperature Tolerances of Fish	66
Chemical Composition of Fish	67
Recommendations	70

CONTENTS

	Page
APPENDIX A: PHYSICAL AND CHEMICAL DESCRIPTIONS OF 187 CORPS OF ENGINEERS RESERVOIRS GREATER THAN 500 ACRES IN SURFACE AREA.	A1
APPENDIX B: ESTIMATED ADJUSTED STANDING CROP OF FISH SPECIES GROUPS AS DETERMINED FROM COVE ROTENONE SAMPLING IN SUMMER FOR CORPS OF ENGINEERS RESERVOIRS. ARRANGED ALPHABETICALLY BY DRAINAGE AREAS.	B1
APPENDIX C: SPORT AND COMMERCIAL FISH HARVEST	C1
Part I: Annual Sport Fish Harvest for U.S. Reservoirs	C1
Part II: Annual Sport Fish Harvest by Drainage Areas	c6
Part III: Annual Commercial Fish Harvest by Drainage Areas.	c8
APPENDIX D: PREDICTED STANDING CROP AND SPORT FISH HARVEST IN CORPS OF ENGINEERS RESERVOIRS GREATER THAN 500 ACRES.	D1
Part I: Predicted Fish Standing Crop	D5
Part II: Predicted Sport Fish Harvest.	DB
APPENDIX E: VOLUMETRIC FOOD HABITS DATA FOR RESERVOIR FISH SPECIES	E1
APPENDIX F: DISTRIBUTION OF FISH BIOMASS AMONG FISR FOOD COMPARTMENTS, ARRANGED BY MAJOR RESERVOIR GROUPS (SIMILAR SPECIES COMPOSITION AND STANDING CROPS) AND THE DISTRIBUTION OF CARRYING CAPACITY BIOMASS , ANNUAL FISH PRODUCTION, AND YOUNG-OF-THE-YEAR (Y-O-Y) PRODUCTION AMONG THE FOOD COMPARTMENTS.	F1
APPENDIX G: FISH CARRYING CAPACITY ARRANGED BY SPECIES AND MAJOR RESERVOIR GROUPS	G1
APPENDIX H: ANNUAL FISH HARVEST.	H1
Part I: Annual Sport Fish Harvest	HI
Part II: Annual Commercial Fish Harvest.	HZ

CONTENTS

	Page
APPENDIX I: MAXIMUM SPECIFIC DAILY GROWTH RATES IN WEIGHT FOR RESERVOIR FISH SPECIES	n
APPENDIX J: DIGESTIVE EFFICIENCIES AND FOOD CONSUMPTION OF FISH.	J1
APPENDIX K: ANNUAL, DAILY, AND INSTANTANEOUS NATURAL MORTALITY RATES FOR VARIOUS FISH SPECIES	K1
APPENDIX L: METABOLIC RATES OF FISH.	L1
Part I: Regression Equations Relating Active Metabolism at Various Temperatures to Fish Weight	L1
Part II: Regression Equations Relating Standard Metabolism at Various Temperatures to Fish Weight.	L2
Part III: Summary of Fish Metabolic Rates at Various Temperatures, Ages, and Weights - - - -	L3
Part IV: Summary of Fish Metabolic Rates at 2QOC	L7
APPENDIX M: FISH TEMPERATURE TOLERANCES.	M1
Part I: Temperature Tolerance and Preference Data for Various Fish Species	M1
Part II: Summary of Temperature Tolerances and Preferences for Reservoir Fish .	M9
APPENDIX N: REFERENCES.	N1
APPENDIX O: BIBLIOGRAPHY.	01
Part I: Fish Foods.	01
Part II: Fish Production	09
Part III: Fish Recruitment.	010
Part IV: Fish Growth Rates	011
Part V: Fish Half-Saturation Constants for Growth	023
Part VI: Fish Digestive Efficiencies	024
Part VII: Fish Mortality Rates - - - -	030
Part VIII: Fish Respiration Rates	034
Part IX: Fish Temperature Tolerances	036
Part X: Fish Chemical Composition	043

LIST OF FIGURES

1	Major drainage areas of the United States (from U.S. Water Resources Development Map, U.S. Geological Survey, 1963)	10
2	Schematic diagram of the relationship between fish and fish food compartments.	27
3	Hypothetical relationship of average annual length of growing season (frost-free period in days) to maximum annual fish production as a percent of carrying capacity.	33
4	Relationships among standing crop, surplus annual production, carrying capacity, and time of year for 21 PSE reservoirs	43
5	Active and standard metabolic rates of thennally acclimated fish (after Fry 1957)	64

LIST OF TABLES

1	Numerical and areal distributions of CE impoWldments by drainage areas	13
2	Adjustment factors used in estimating standing crop from cove rotenone samples	19
3	Fish food expressed as a percentage of the diet by volume	26
4	Estimated reproduction as a percentage of the carrying capacity for 21 PSE reservoirs in 1972 and 1973	36
5	Production and reproduction estimates for Beaver and Bull Shoals reservoirs.	37
6	Contribution of each fish compartment to total reproduction.	40
7	Annual reproduction supported by each food compartment.	41

LIST OF TABLES

8	Length at recruitment for reservoir fish species or species groups. • • . . ■	45
9	Fish food at recruitment expressed as a percentage of the diet by volume - - ■	
10	Distribution of recruitment by food compartments and date for 23 PSE reservoirs	
11	Percentage of total. annual recruitment supported by each food compartment •	48
12	Estimated half-saturation constants for fish growth.	56
13	Temperature tolerances for various fish groups	68
14	Chemical composition of fish . . . ■	69

CONVERSION FACTORS, U.S. TO METRIC (51)
UNITS OF MEASUREMENT

U.S. customary units of measurement used in this paper can be converted to metric (5r) units as follows:

Multiply	By	To Obtain
inches	25.4	millimeters
feet	0.3048	meters
miles	1.609344	kilometers
square miles	2.58999	square kilometers
acres	0.40468	hectares
acres	0.0040468	square kilometers
acre-feet	1.234	megalitres*
pounds	453.5923	grams
pounds per acre	1.120851	kilograms per hectare

*** 1 megalitre - 10⁶ litres = 1000 cubic meters.**