

Manufacturer: Sharp Corporation
Model: AdvantagePak®
ASTM Type: VIIIA(5)

Description:

This is a semi-rigid blister non-reclosable package (Figures 1A and 1B). The package consists of a paperboard blistercard enclosing a semi-rigid, foil backed blister. The package consists of three sections, which are an attached cover on the left (see arrow in Figure 1B) to permit additional instructions, a center section containing the opening instructions, and the blistercard containing the product on the right. The section on the right folds onto the center section and the left hand section then covers the blistercard (Figure 1B).



Figure 1A

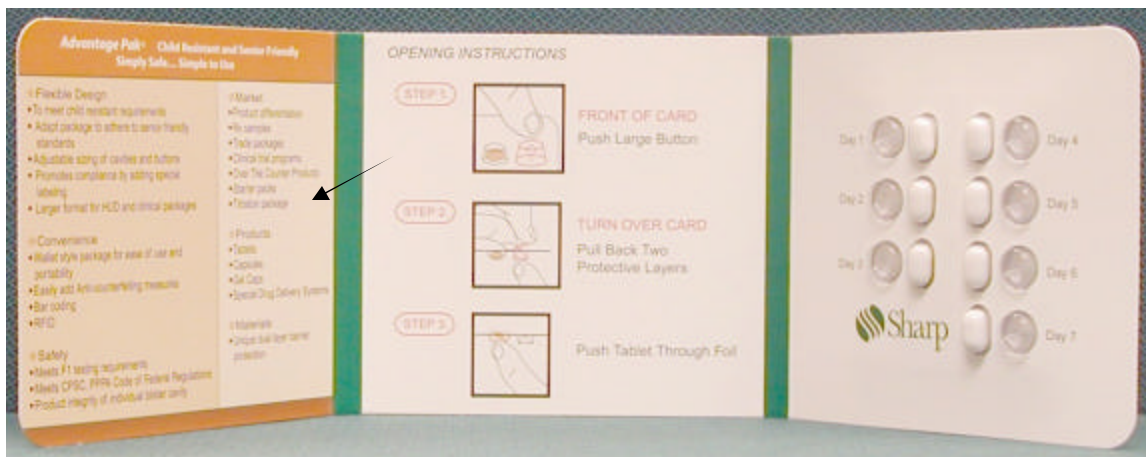


Figure 1B

The blister cavities and large buttons protrude through holes in the front of the card (Figure 2). There is a large button associated with each blister cavity. The large button has a conical dimple molded into it (see arrow Figure 3). The back of the card has perforations through which products are dispensed (see Figures 4A, 4B, and 4C).



Figure 2

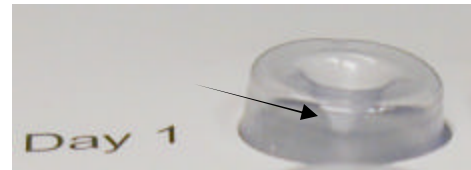


Figure 3

The package is opened by pushing the large button to the side of the blister cavity (see arrows in Figure 2). The conical dimple molded into the large button (Figure 3) acts to push out a perforated portion of the protective backing (see arrow in Figure 4A and tip of cone in Figure 4B). The card is turned over and the paper and plastic exposed layers are peeled back (see arrows in Figure 4B) to expose the foil backing. The tablet is then pushed through the foil backing and out of the card (Figure 4C).



Figure 4A

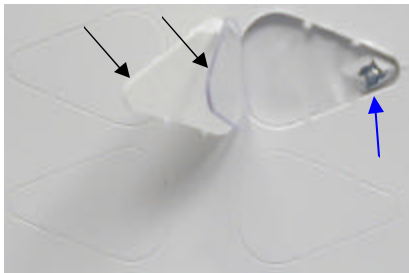


Figure 4B



Figure 4C

The manufacturer's instructions inside the center section of the card are (see Figure 5):

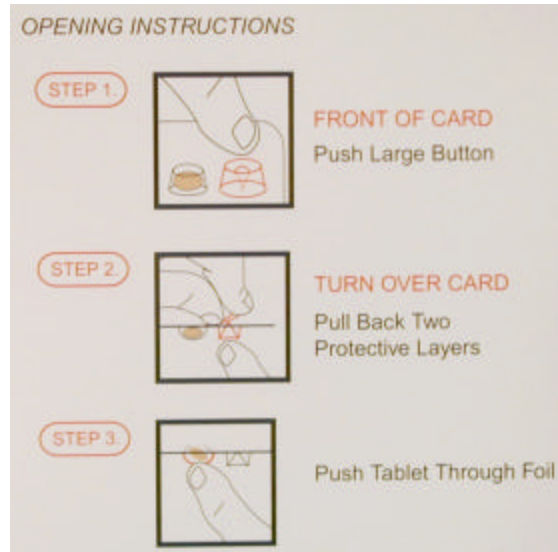


Figure 5

OPENING INSTRUCTIONS:

- | | | |
|----------------|---|--|
| STEP 1. | (There is a picture of a finger about to push the large button) | FRONT OF CARD
Push Large Button |
| STEP 2. | (There is a picture of the backing pulled back while the large button is being depressed) | TURN OVER CARD
Pull Back Two Protective Layers |
| STEP 3. | (There is a picture of the tablet being pushed through the foil and out of the package) | Push Tablet Through Foil |