

# BMP Siting Tool (ArcGIS 10.1 version) Installation Guide

## PREPARATION

1. To use the *BMP Siting Tool*, you need **ArcMap 10.1** with **Service Pack 1** (Build 3143) and **Spatial Analyst** extension. You can check the ArcMap version by clicking the **Help** menu and then **About ArcMap...** menu item on the ArcMap application. It opens a separate dialog box (shown below) with the software information.



***BMP Siting Tool (ArcGIS 10.1) is **not compatible** with ArcGIS 9.x or older versions.***

2. The preferred operating system is **Windows 7** (32-bit or 64-bit).
3. To complete the *BMP Siting Tool* installation and activation procedure, you must log in to your computer with **Administrator level privilege**.

## INSTALLATION

4. Create a folder on your local hard drive (**C:\BMPSitingTool**) and unzip the contents of **BMPSitingTool\_Setup.zip** file in that folder.



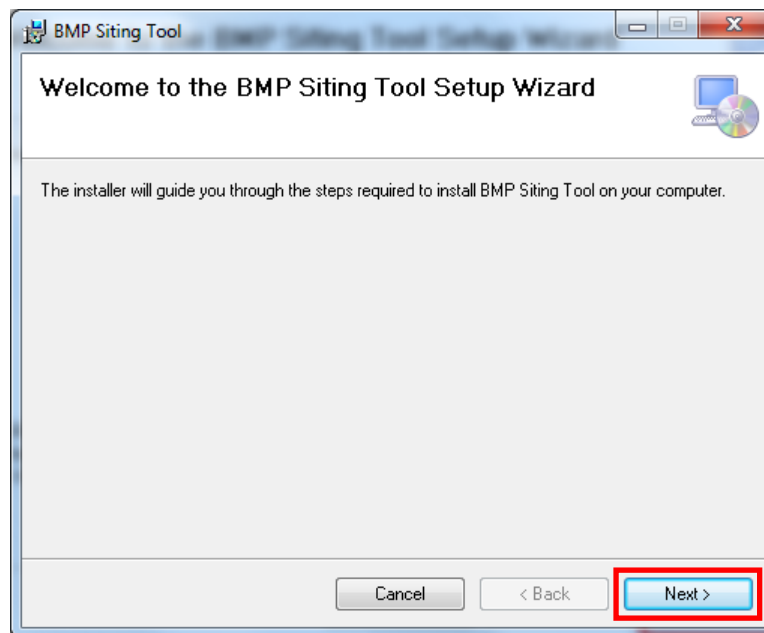
***There should be **no space** in the folder name and in the folder path. You must have the **read and write privileges** to the created folder.***

5. To begin the installation, double-click the *BMPsitingTool\_Setup.msi* file under the newly created folder (C:\BMPsitingTool).

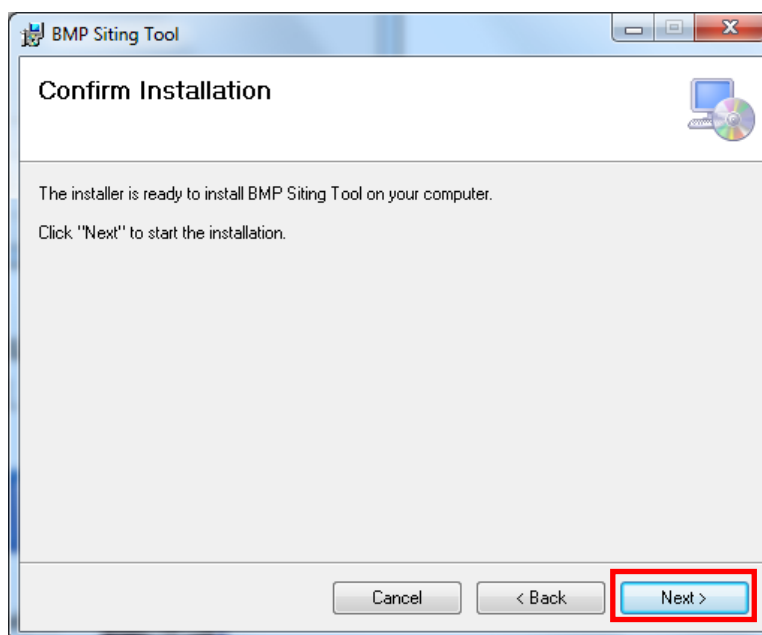


When you are asked, click *Yes* to all the messages during the installation.

6. To continue the install, click **Next**.

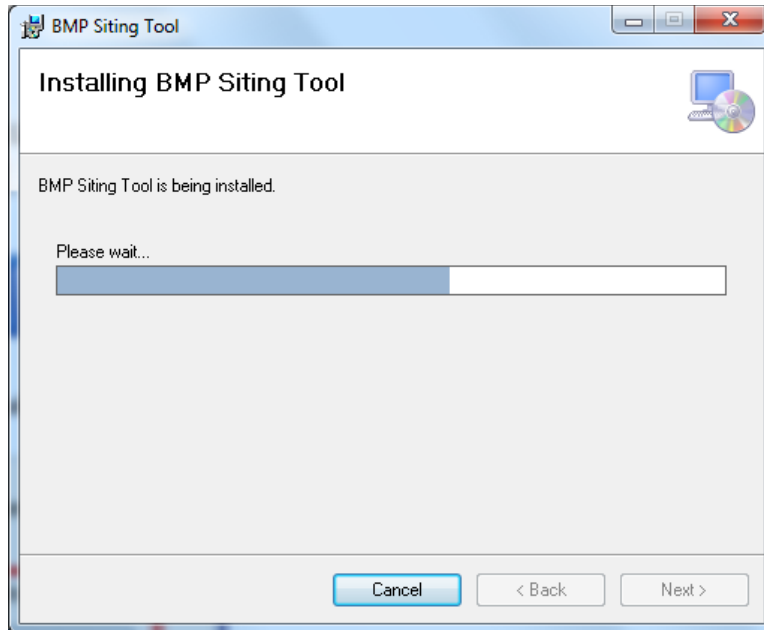


7. To confirm installation, click **Next**.

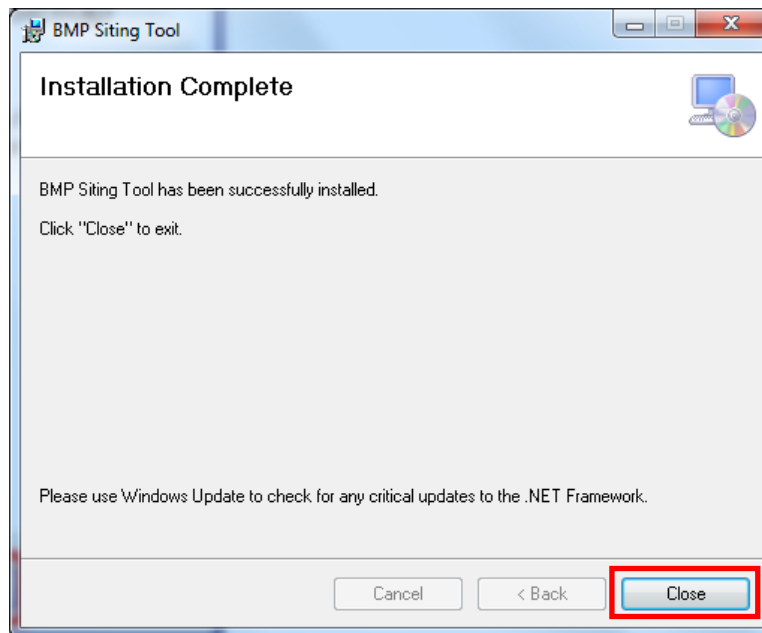


8. The installer extracts the program files and installs them under the System Program Files folder (C:\Program Files (x86)\BMP Siting Tool\).

Please wait while the program is being installed...

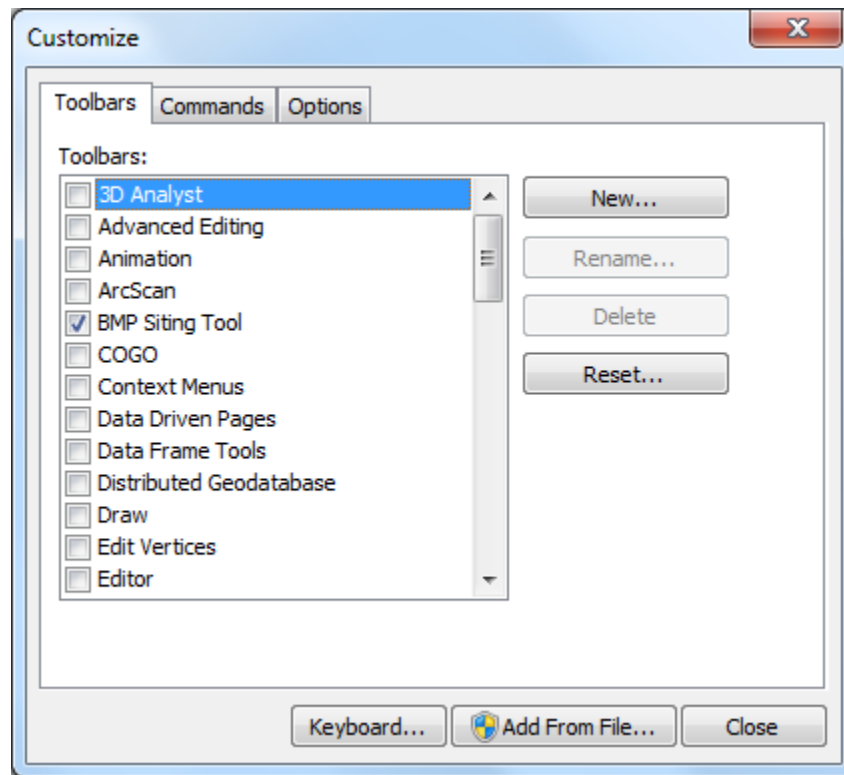


9. When the installation is complete, the Installation Complete dialog box (below) appears. To exit, click **Close**.

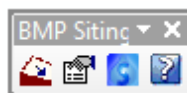


## ACTIVATION

10. After the *BMP Siting Tool* is installed, open ArcMap by clicking **Start**, pointing to **All Programs > ArcGIS**, and clicking *ArcMap10.1*.
11. In ArcMap, on the **Customize** menu, click **Customize Mode....** Under the toolbars tab of the Customize dialog box, select the checkbox next to *BMP Siting Tool* listed (see below).



The *BMP Siting Tool* toolbar is activated and displayed in ArcMap.



12. To complete the *BMP Siting Tool* activation procedure, click **Close** in the Customize dialog box.
13. To launch the step-by-step user guide (**BMPSitingTool\_UserGuide.pdf**), click *Help* (?) on the *BMP Siting Tool* toolbar.