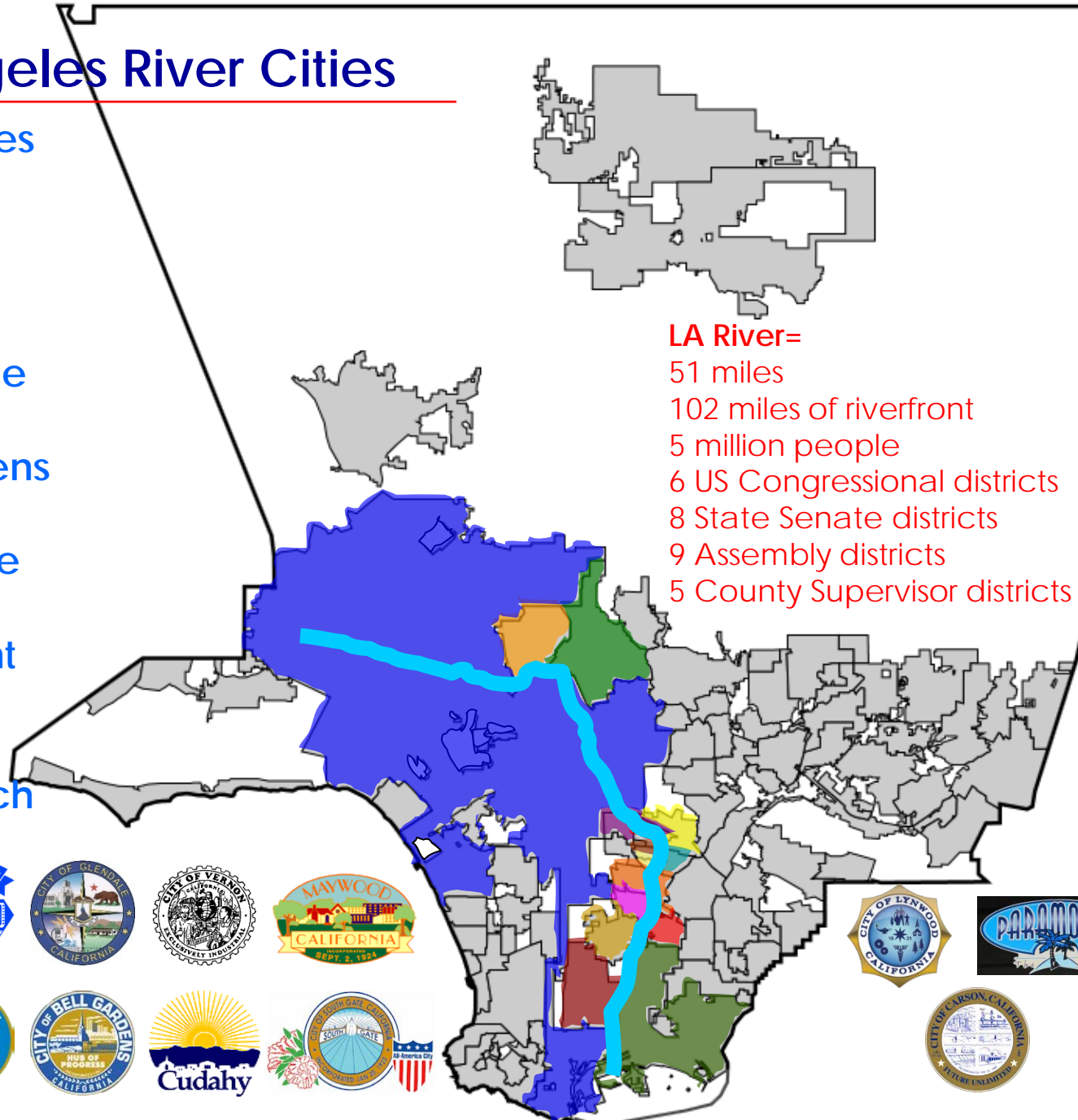
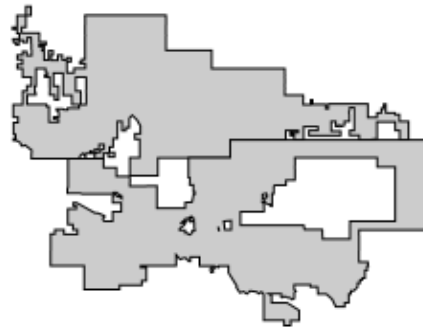


LOS ANGELES RIVER
REVITALIZATION
&
THE URBAN WATERS
FEDERAL PARTNERSHIP

Los Angeles River Cities

Los Angeles
Burbank
Glendale
Vernon
Maywood
Commerce
Bell
Bell Gardens
Cudahy
South Gate
Lynwood
Paramount
Compton
Carson
Long Beach



LA River=
51 miles
102 miles of riverfront
5 million people
6 US Congressional districts
8 State Senate districts
9 Assembly districts
5 County Supervisor districts





LA River = 51 miles
Basin/watershed = 870 sq. mi.
Within the City of LA, the
LA River Corridor is Home to:

More than 1 million people

More than 390,000 housing units

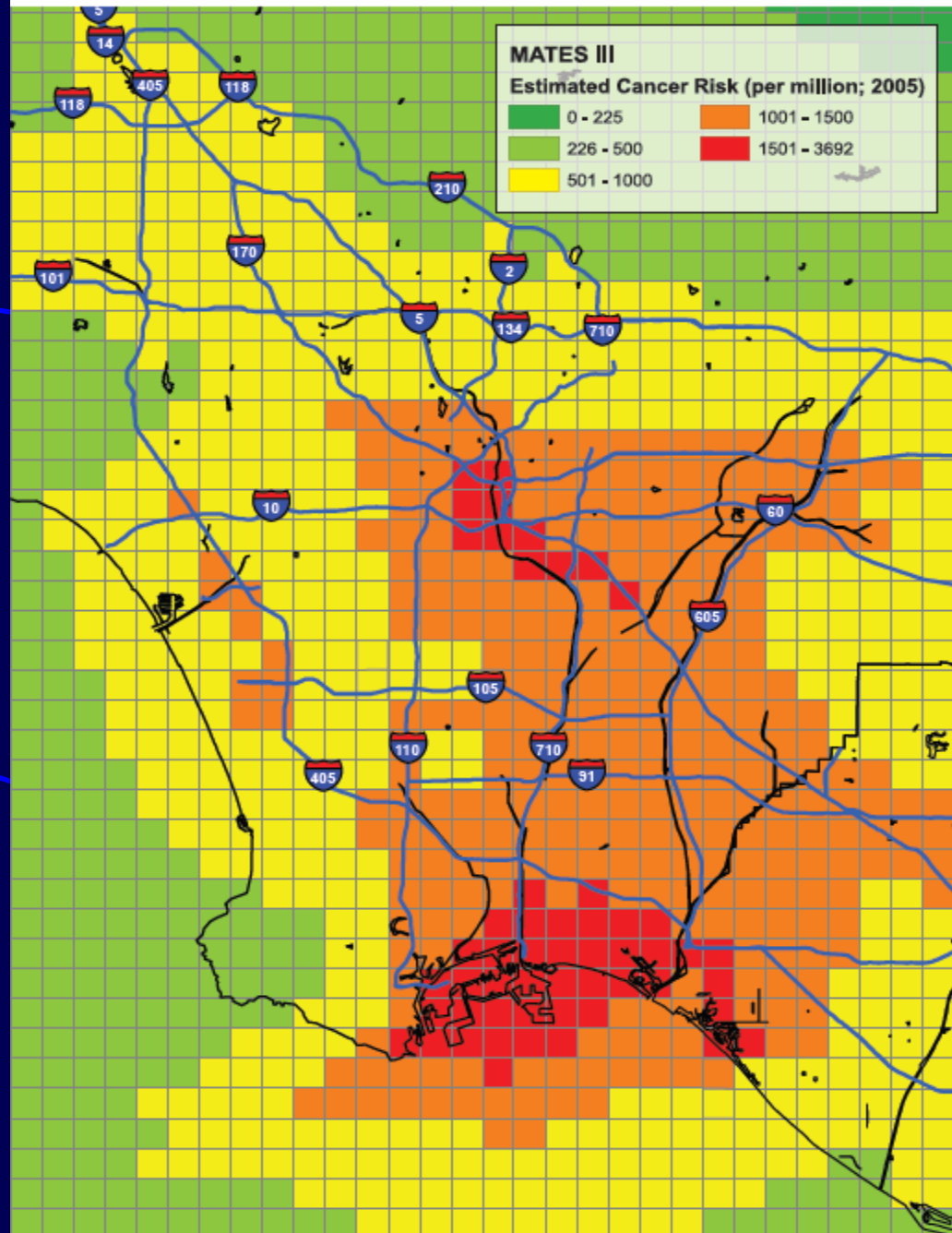
More than 480,000 workers

More than 35,000 businesses

More than 80 schools

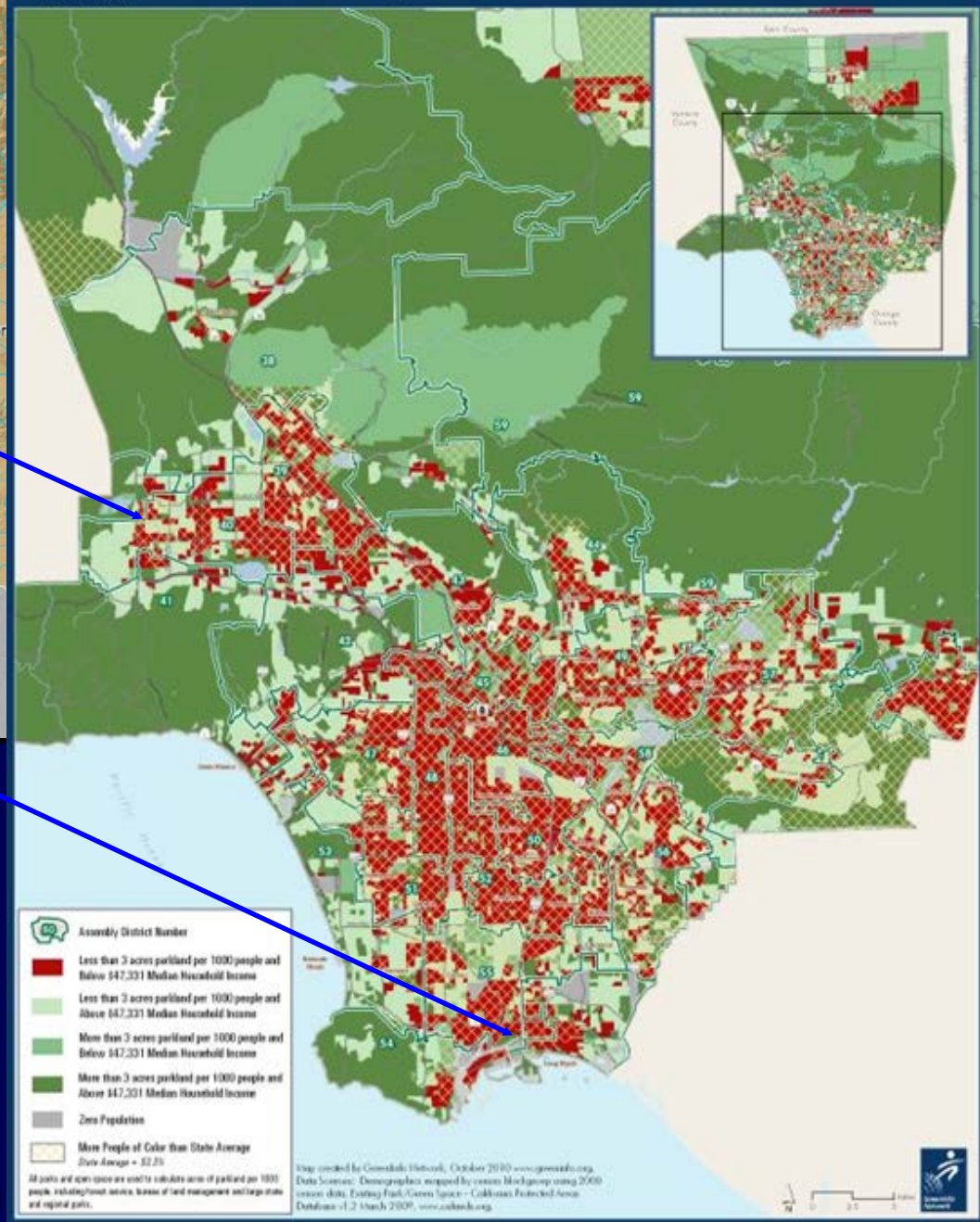
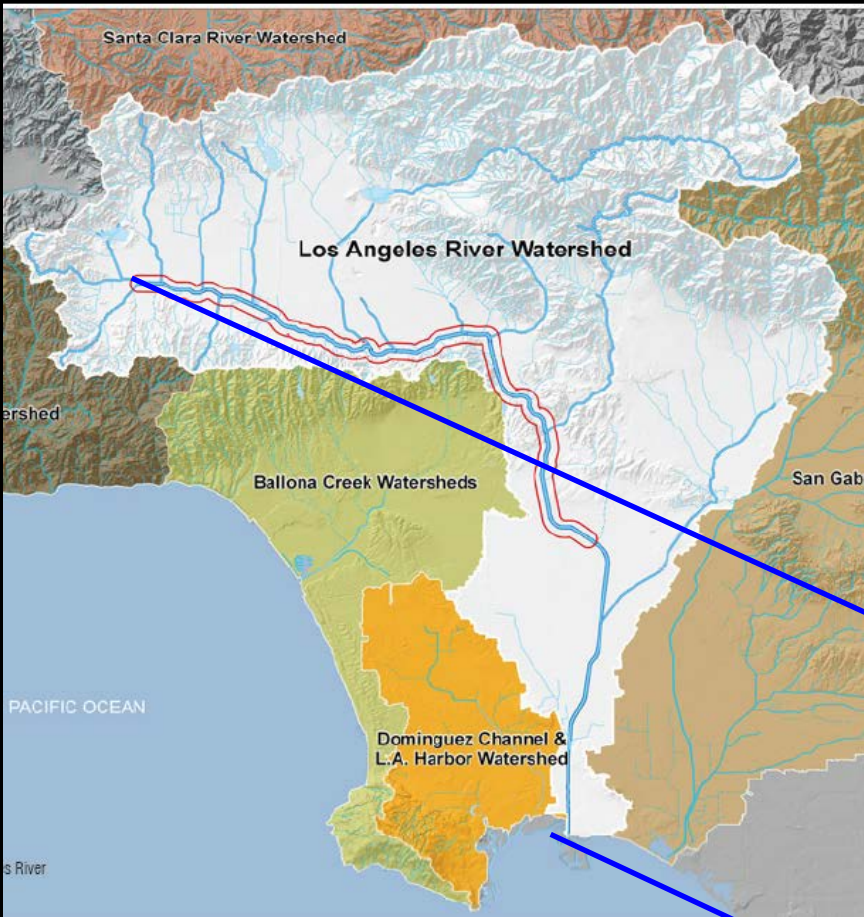


Figure 1. Los Angeles' Epicenter of Cancer Risk



A significant portion of the LA River falls within the “Epicenter of Cancer Risk” in terms of air toxics.

Source: *Hidden Hazards: A Call to Action for Healthy, Livable Communities*, Los Angeles Collaborative for Environmental Health and Justice, Liberty Hill Foundation, 2010

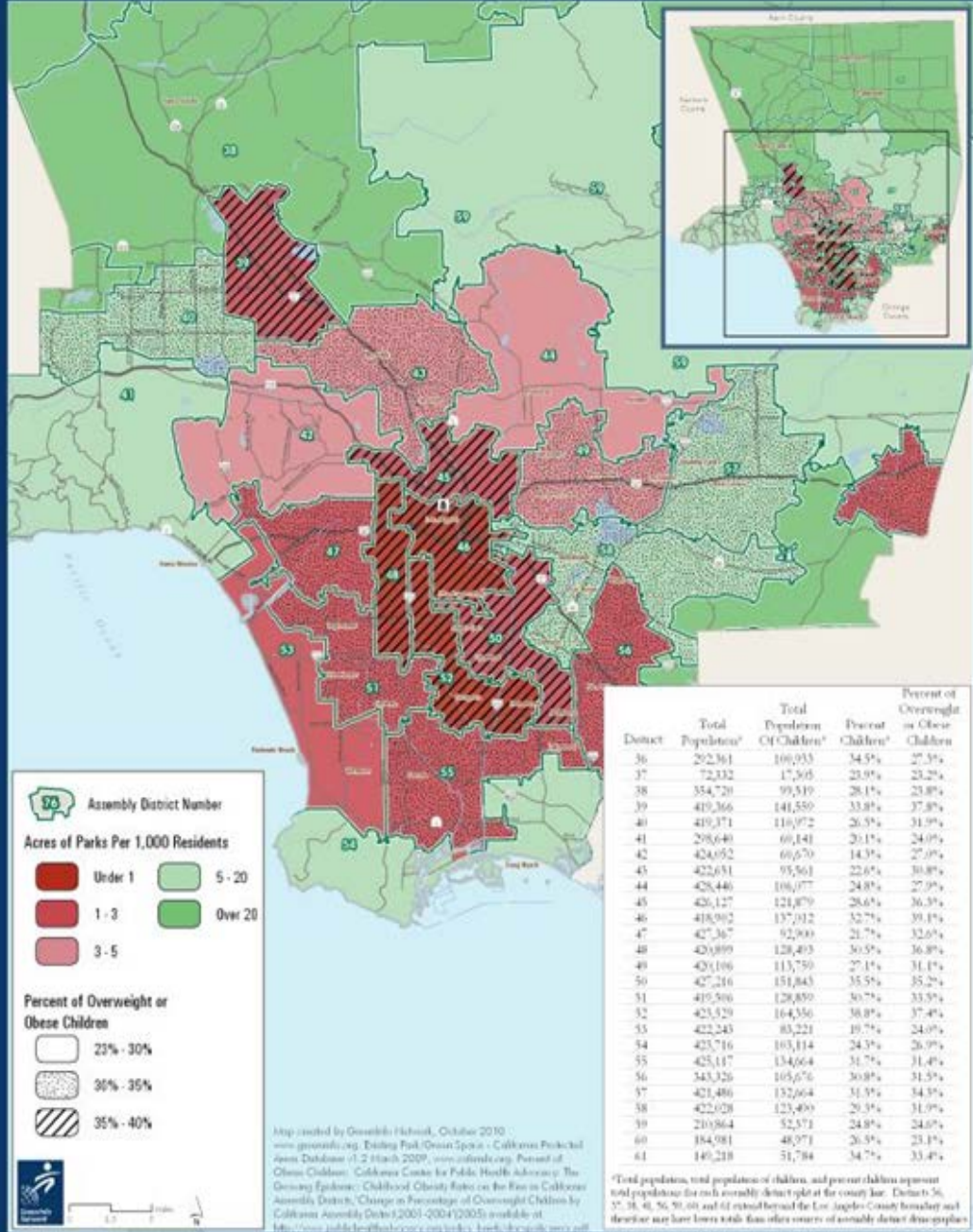


The LA River flows through many low-income communities of color that lack access to parks.

Source: The City Project, www.cityprojectca.org



Park Access and Child Obesity by State Assembly District
 Los Angeles County

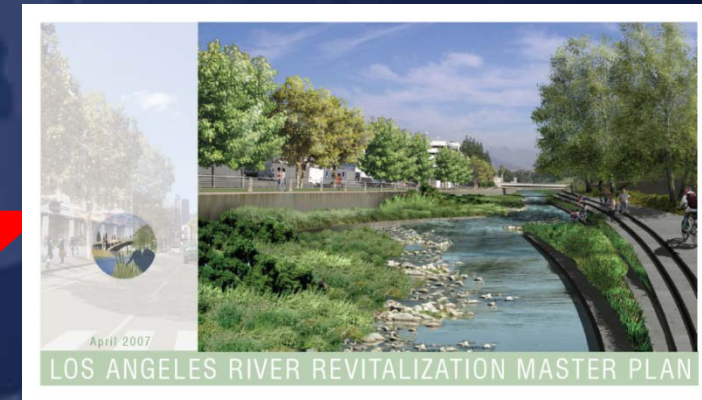


The LA River flows through many communities with high incidences of childhood obesity.

Source: The City Project, www.cityprojectca.org



LA River = 51 miles
City of LA = First 32 miles



City's Plan = www.lariver.org
Focus = 240+ multi-benefit projects

2007



Connecting Río de LA State Park to the River



© 2008 Sanborn

Image © 2008 DigitalGlobe

© 2008 Google



THE LOS ANGELES RIVER REVITALIZATION MASTER PLAN

OUR RIVER, OUR FUTURE

Connecting Río de LA State Park to the River





LA State Historic Park/Cornfields: Connecting to the River Under the Rail





LA State Historic Park/Cornfields: Connecting to the River Under the Rail (After)

Conceptual image from the City of LA's 2007 LA River Revitalization Master Plan



LA State Historic Park

Elysian Park/Hills



Bringing Nature Back to the Post-Industrial Landscape



Bringing Nature Back to the Post-Industrial Landscape



River Warrior Award Winner



River Hero Award Winner

Green Paddle Award for Waterway Conservation



L.A. RIVER EXPEDITIONS

PUTTING THE RIVER BACK IN THE RIVER

ABOUT EXPEDITIONS COMMUNITY EDUCATION NEWS ACTIVISM CONTACT STORE

<http://lariverexpeditions.org/>

HOT OFF THE PRESS!
SIGN UP FOR OUR EMAIL LIST

 SIGN UP FOR A RIVER EXPEDITION!!



LA RIVER KAYAKS

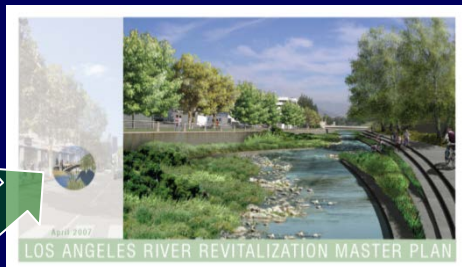
www.lariverkayaks.com

[Rent, Ride, Hire a Guide Here](#) Featured on ABC's [Eye on LA's bucket list](#) kayaking down the LA River is one of the most exciting recreational experiences LA has to offer. After an incredible summer in 2013(thank you everyone that joined us!) we are back for our 2nd season starting May 26th and continuing every weekend through labor day from 7:30 am to 4:30 pm.

We are located in the Elysian Valley section of the river just north of downtown Los Angeles at [Marsh Park](#) and are partnering with the [Mountains Recreation Conservation and Authority](#) to connect you

Mayor's Performance Measure: Miles of LA River Public Access

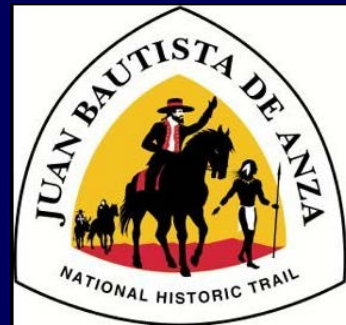
City's 2007 LA River Revitalization Master Plan
www.lariver.org



CITY'S
RIVER &
BIKE
PLANS



A continuous River Greenway is proposed along the Los Angeles River.



FEDERALLY-
IMPORTANT



LARRC:
PRIVATE
SECTOR
PRIORITY



NORTHEAST L.A. RIVERFRONT COLLABORATIVE



Northeast Los Angeles Riverfront Collaborative

www.mylariver.org

The NELA Riverfront District Vision Plan comes out of the community engagement activities and celebrate the NELA riverfront neighborhoods of Atwater Village, Cypress Park, Elysian Valley, Glassell Park, and Lincoln Heights. The Vision Plan documents ideas we heard from the community to improve the NELA Riverfront area and recommendations that we feel can effectively deliver these improvements to the L.A. River and its surrounding Northeast Los Angeles riverfront neighborhoods. **Download the Vision Plan**



www.folar.org

Bird's-eye view from east

Source: The Piggyback Yard Conceptual Master Plan (2010)

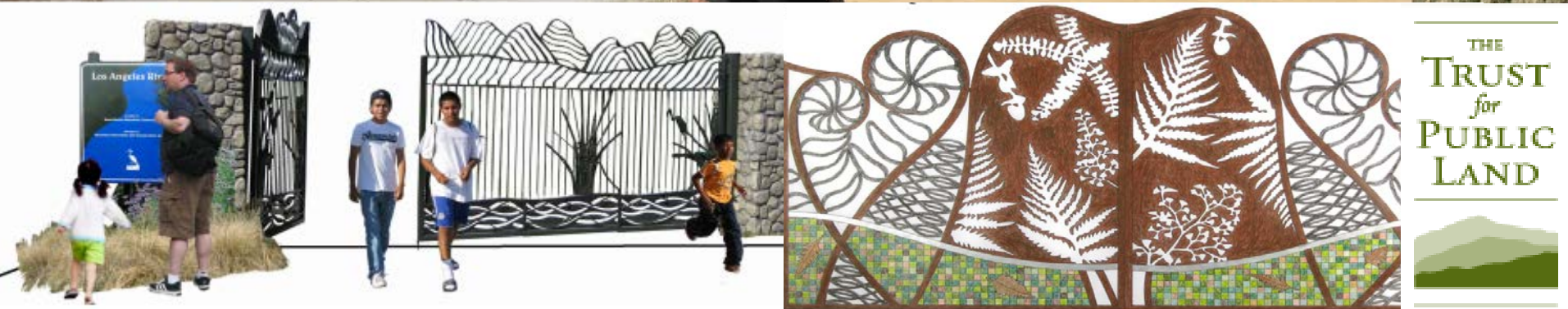


LOS ANGELES RIVER Greenway

Valley

Narrows

Downtown



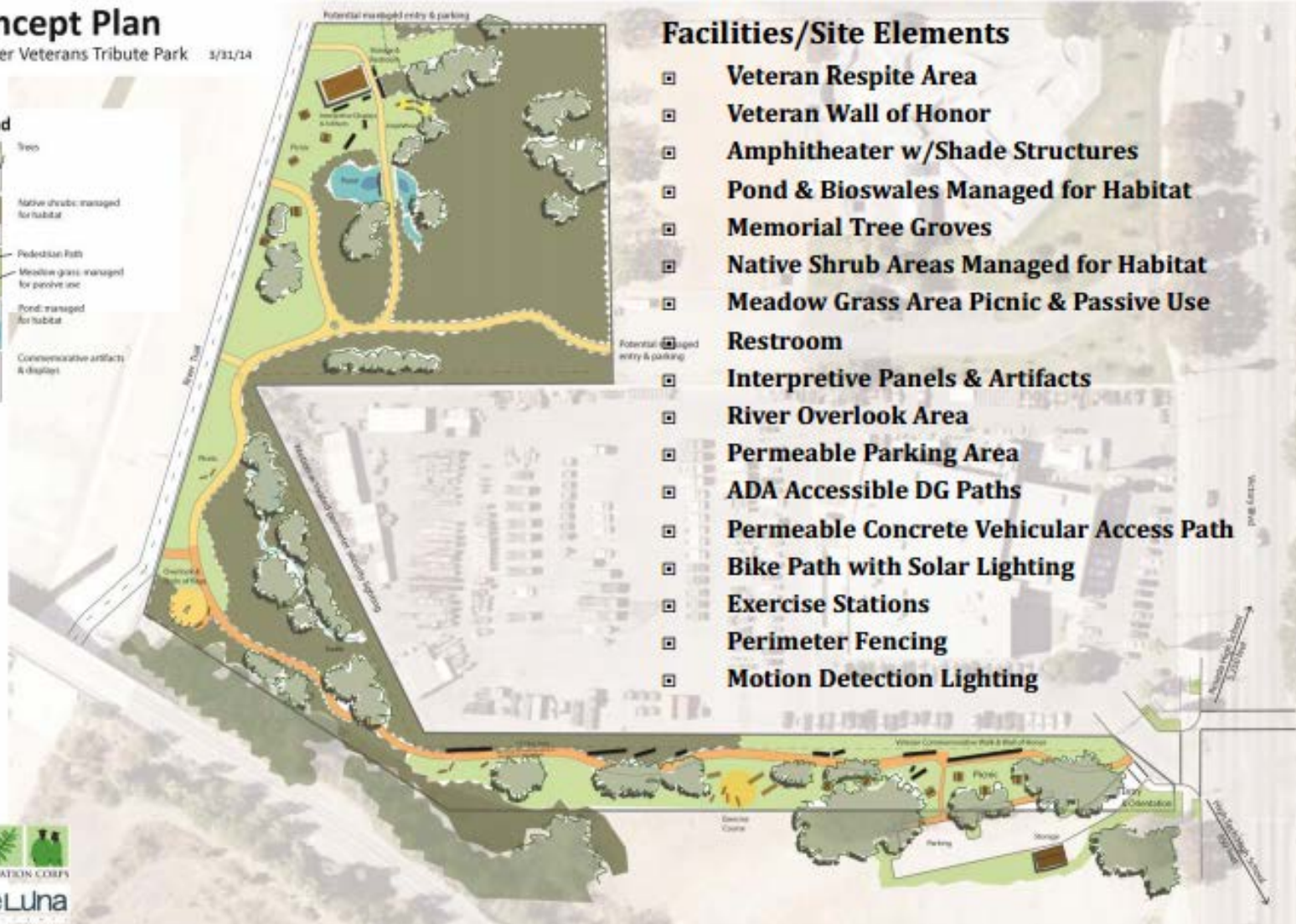
- The Trust for Public Land: Aliso Creek Confluence Park/Reseda River Loop

Concept Plan

LA River Veterans Tribute Park 3/31/14

Legend

-  Trees
-  Native shrubs: managed for habitat
-  Meadow grass: managed for passive use
-  Pond: managed for habitat
-  Commemorative artifacts & displays



Facilities/Site Elements

- ☐ Veteran Respite Area
- ☐ Veteran Wall of Honor
- ☐ Amphitheater w/Shade Structures
- ☐ Pond & Bioswales Managed for Habitat
- ☐ Memorial Tree Groves
- ☐ Native Shrub Areas Managed for Habitat
- ☐ Meadow Grass Area Picnic & Passive Use
- ☐ Restroom
- ☐ Interpretive Panels & Artifacts
- ☐ River Overlook Area
- ☐ Permeable Parking Area
- ☐ ADA Accessible DG Paths
- ☐ Permeable Concrete Vehicular Access Path
- ☐ Bike Path with Solar Lighting
- ☐ Exercise Stations
- ☐ Perimeter Fencing
- ☐ Motion Detection Lighting

LOS ANGELES RIVER Greenway

Valley

Narrows

Downtown

**Friends
of
the
LOS ANGELES
River**



North East Trees
Bringing Nature Back



Sennett Creek Park Concept Sketch

- FoLAR and North East Trees: Sennett Creek Restoration



US Army Corps of Engineers ARBOR Study = 11 miles Focus = Ecosystem restoration

Army Corps to recommend \$1-
billion L.A. River project



Leaves line the bed of the Arroyo Seco at its confluence with the Los Angeles River north of downtown Los Angeles, where the river is largely made of concrete. (Luis Sinco / Los Angeles Times)

By **LOUIS SAHAGUN**

MAY 28, 2014, 5:23 PM

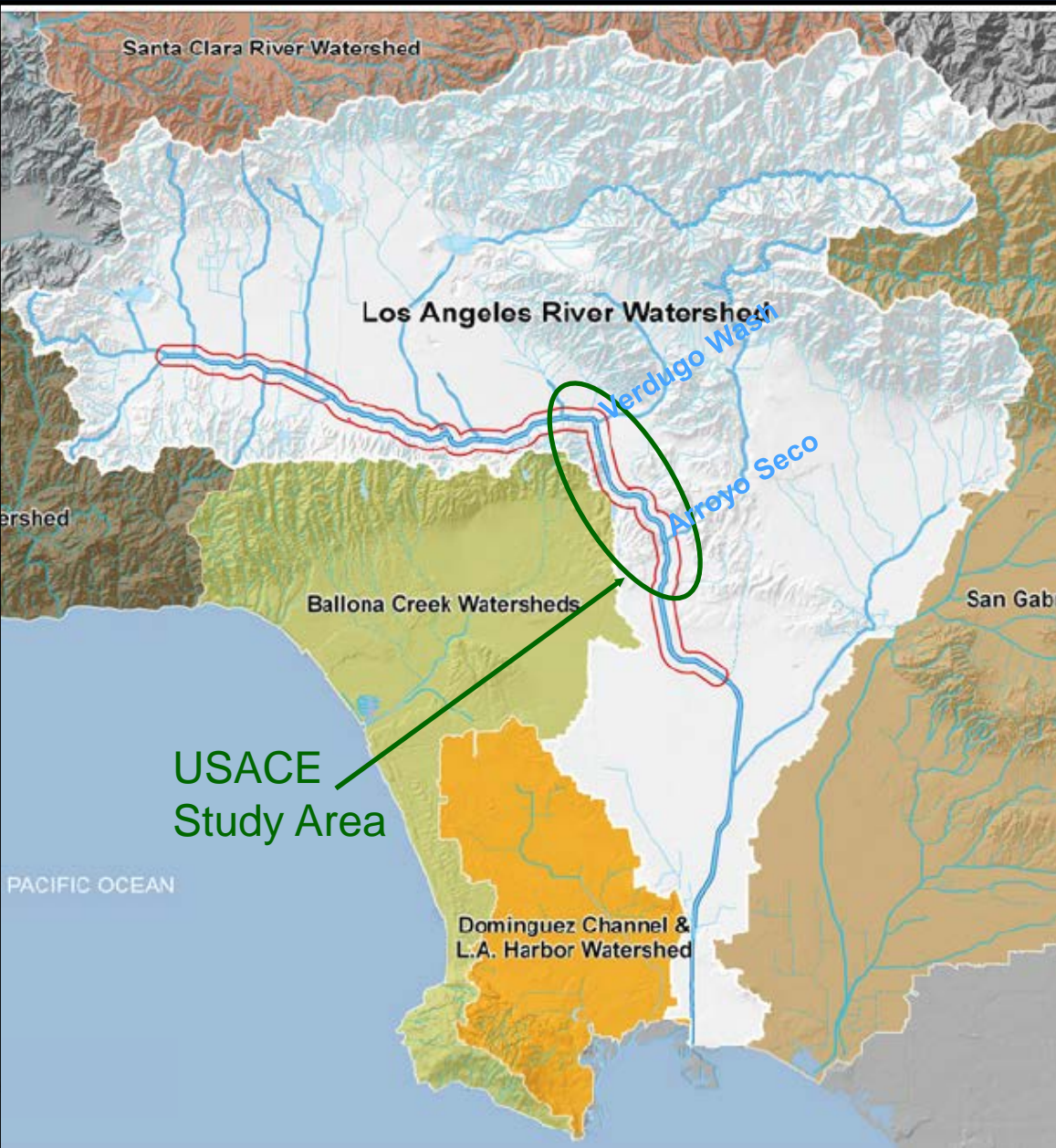
Los Angeles Times

Federal officials gave a major boost Wednesday to the city's plans to turn the Los Angeles River into an urban oasis for recreation and an inviting locale for new commercial and residential development.

The U.S. Army Corps of Engineers said it has decided to recommend approval of an ambitious, \$1-billion proposal to restore habitat, widen the river, create wetlands and provide access points and bike trails along an 11-mile stretch north of downtown through Elysian Park.

2014

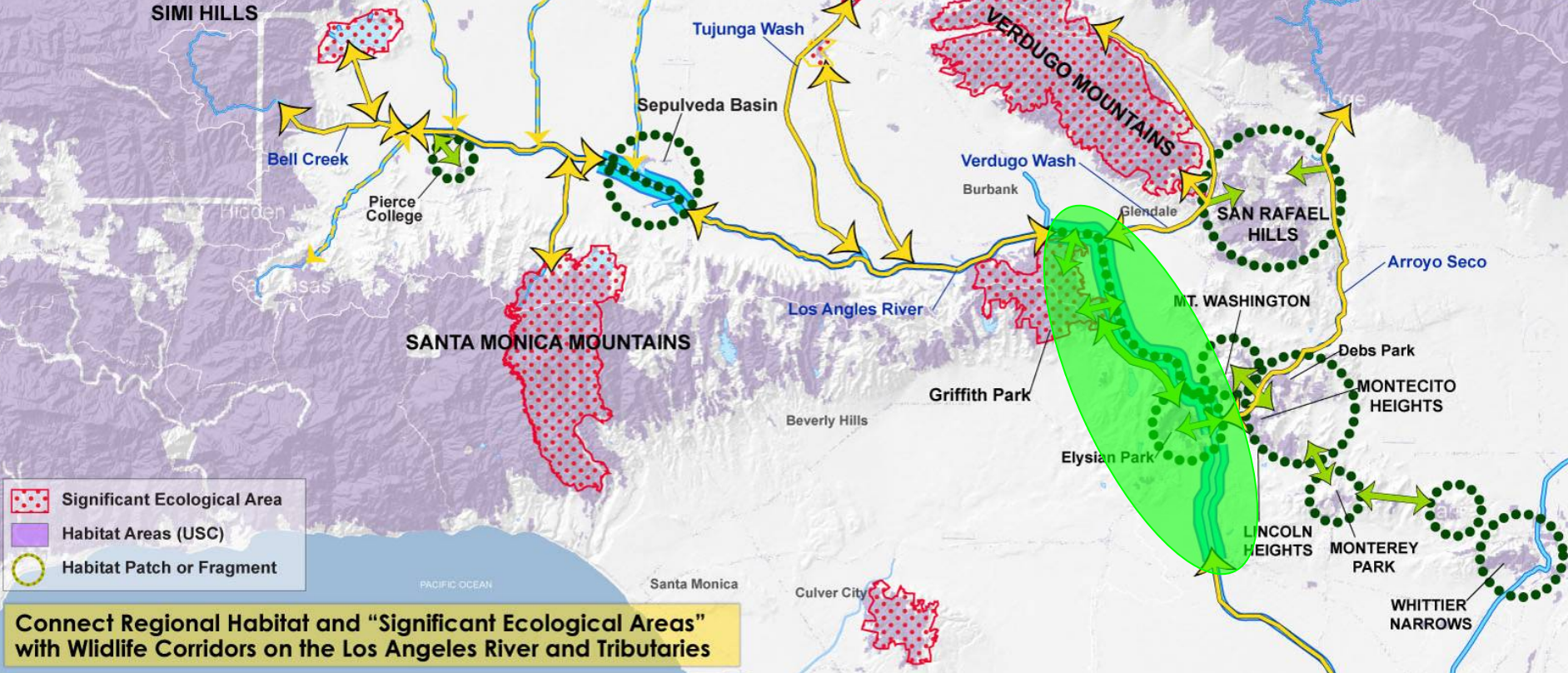
The US Army Corps of Engineers (USACE) LA River Ecosystem Restoration Feasibility Study



- Started in 2006
- City is local cost-share partner
- Total cost is approx. \$11 million
- Study covers 11 miles
- Mission is ecosystem restoration
- Project will be cost-shared (% must be determined)
- Federal funding to be appropriated in phases over many years
- FoLAR (local NGO) donated almost \$1 million in 2012



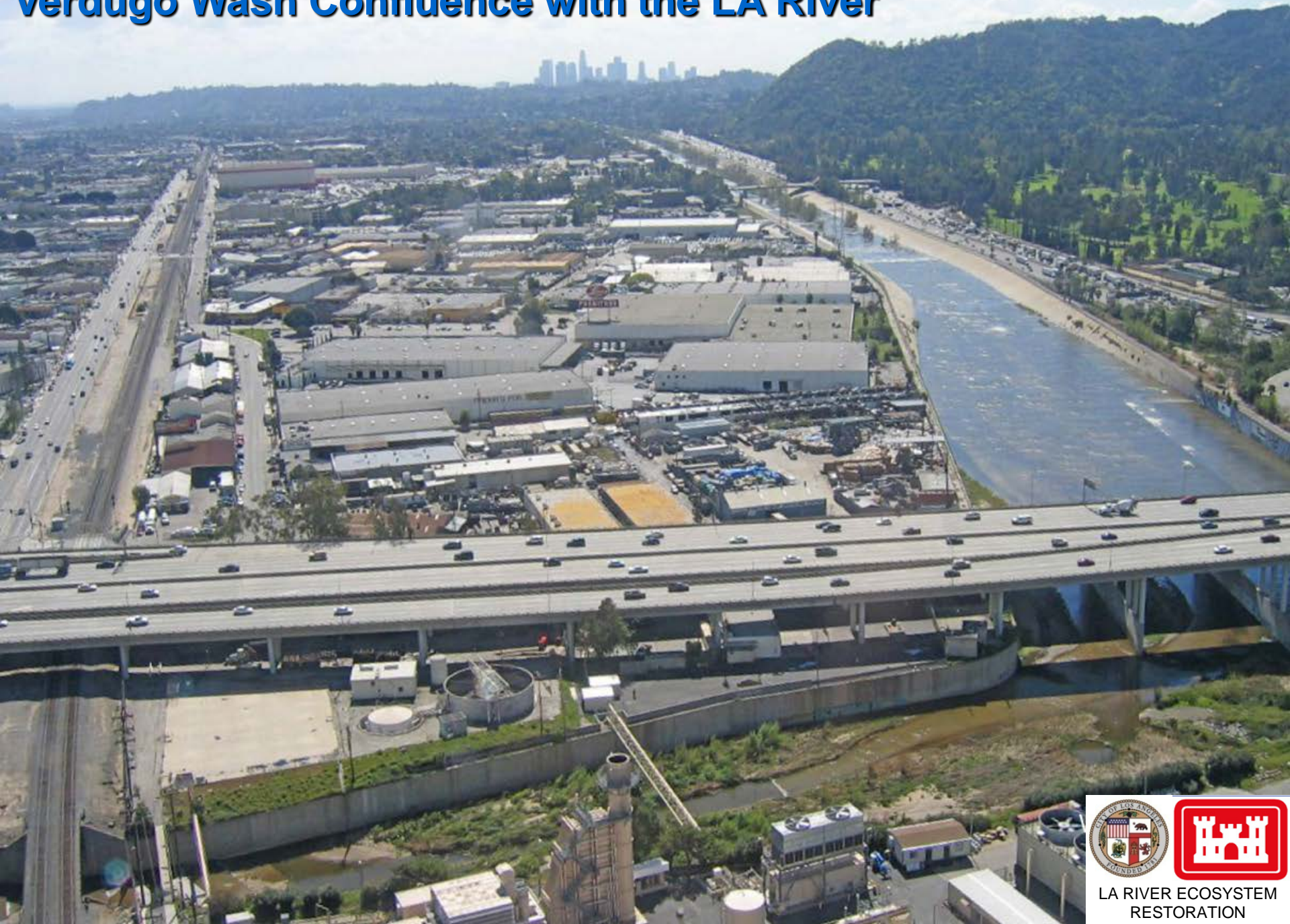
SIMI HILLS



Connect Regional Habitat and "Significant Ecological Areas" with Wildlife Corridors on the Los Angeles River and Tributaries

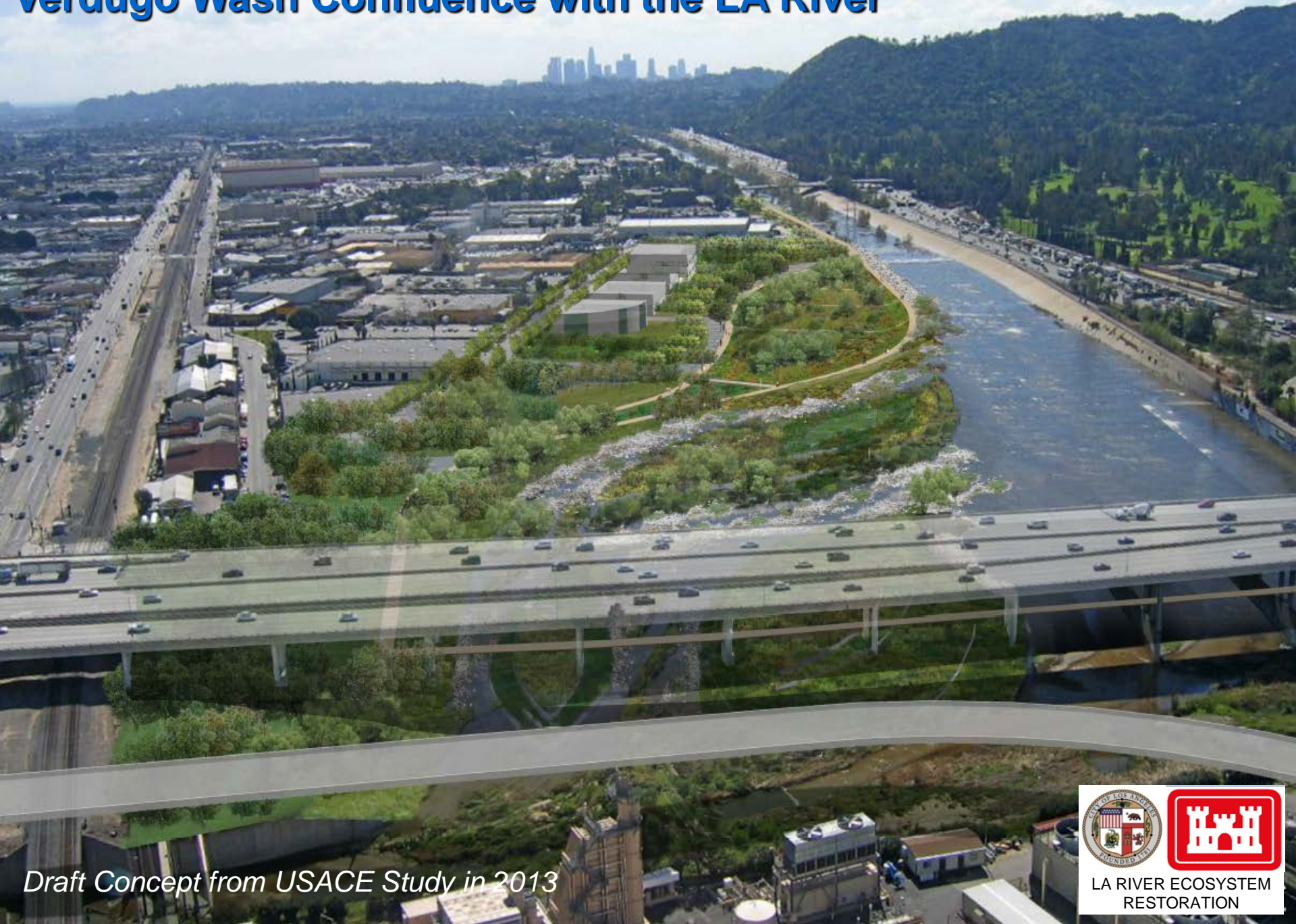
- City recommended entire 32 miles within its boundary
- USACE saw greatest ecosystem potential in 11-mile "soft-bottomed" area
- Includes existing riparian habitat
- Includes 2 major tributary confluences w/ potential connections to existing SEAs
- Includes 3 large State park sites
- Includes large adjacent open spaces in single ownership

Verdugo Wash Confluence with the LA River



LA RIVER ECOSYSTEM
RESTORATION

Verdugo Wash Confluence with the LA River



Draft Concept from USACE Study in 2013



LA River at Taylor Yard



Río de LA
State Park

Taylor Yard
G-2 Parcel
(City of LA
negotiating to
acquire)

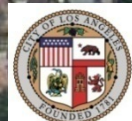
Bowtie State Park site



LA RIVER ECOSYSTEM
RESTORATION

LA River at Taylor Yard

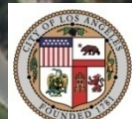
Draft Concept from USACE Study in 2013



LA RIVER ECOSYSTEM
RESTORATION



LA River at the Cornfields/LA State Historic Park



LA RIVER ECOSYSTEM
RESTORATION



LA River at the Cornfields/LA State Historic Park

Draft Concept from USACE Study in 2013



LA RIVER ECOSYSTEM RESTORATION


Save LA River Open Space  Working to save the San Fernando Valley's Last Remaining 16 Acres of Unprotected Open Space on the L.A. River

www.slaros.org [Donate](#)

Home Background The Park Feasibility / Water Quality Public Access About Us Take Action FAQ

[Join our email list to stay informed!](#)  

OPEN SPACE THREATENED!



[PLEASE SIGN OUR PETITION](#) to preserve 100% of the open space at Weddington Golf & Tennis in Studio City:

What You Can Do to Help:

PLEASE ADD YOUR SIGNATURE TODAY BY [CLICKING HERE](#) - SLAROS SIGNATURE SUPPORT to sign our petition and tell local elected officials to preserve this precious open space for future generations.

NELA Riverfront Collaborative Join the mailing list for updates. [Go](#)

About News I Want Food... Map


www.mylariver.org

I want food in my neighborhood to be...

Join us for a morning of engaging activities and discussions around food access and policy.

Saturday, July 27th, 10am-12pm
Elysian Valley Community Garden
1816 Blake Ave., L.A. 90039

Refreshments will be served and all participants will be entered to win gift cards to local eateries.

Watch 

How would you envision a Riverfront District?

Summer Policy Engagement Schedule

August 10 **August 24**
Community & Jobs Planning & Mobility

LA River Identity

Alliance of River Communities Monthly Meeting Announcement

Thursday, July 25th from 7:00pm to 9:00pm

The Glassell Park Senior & Community Center
3750 N. Verdugo Rd Los Angeles, 90065

Please join us for our regular monthly meeting of the Alliance of River Communities- Los Angeles's Alliance of East and Northeast Area Neighborhood Councils and community leaders.

A special guest joining our July 25th meeting will be the Friends of the Los Angeles River (FoLAR) and they will present an update on their Los Angeles River Rover Mobile Visitor Center.



The Alliance of River Communities represents a diverse swath of neighborhood leaders from Los Feliz to the east city border and from Eagle Rock down to the Hollywood freeway. The Los Angeles River and Arroyo Seco serve as a symbol of what ties our communities together. ARC seeks to enhance and empower neighborhood council leaders and to increase the voice and influence of the communities it represents.

The neighborhood councils that make up the ARC area include the:

- Arroyo Seco NC | Atwater Village NC | Boyle Heights NC
- Eagle Rock NC | Elysian Valley Riverside NC | Glassell Park NC
- Greater Cypress Park NC | Greater Echo Park Elysian Valley NC
- Historic Highland Park NC | LA 32 NC | Lincoln Heights NC
- Los Feliz NC | Rampart Village NC | Silver Lake NC

ARC Los Angeles | [@ARCLosAngeles](https://twitter.com/ARCLosAngeles) | ARC@EmpowerLA.org



 HOME **OUR HISTORY** PROJECTS EVENTS CALENDAR RESOURCES FARMER'S MARKET AT LA CITY HALL

www.laraba.org



LA River Artists and Business Association

Search [Go](#)

[Advanced Search](#)

The purpose of the Los Angeles River Artists and Business Association (LARABA), a 501(c)(4) community betterment association, is to improve the quality of life and enhance opportunities for all Arts District stakeholders by encouraging a lively and healthy social, cultural and economic environment.

LARABA also seeks to preserve and promote the Arts District as a true creative community for the cultural and economic benefit of all Angelenos.

Further, the Association strives to provide a community forum to develop common goals and engage in cooperative strategies to guide the evolution of the Arts District as it meets future challenges.

Sunday, June 9, 2013 - 7:00am

 **LOS ANGELES RIVER RIDE**
LIVE MUSIC. TSHIRTS. GREAT FOOD.

13TH ANNUAL

ALL AGES & ALL ABILITIES!



la-bike.org

River Warrior Award Winner  River Hero Award Winner Green Paddle Award for Waterway Conservation

L.A. RIVER EXPEDITIONS

PUTTING THE RIVER BACK IN THE RIVER

ABOUT EXPEDITIONS COMMUNITY EDUCATION NEWS ACTIVISM CONTACT STORE

www.lariverexpeditions.org

HOT OFF THE PRESS!
SIGN UP FOR OUR EMAIL LIST

 SIGN UP FOR A RIVER EXPEDITION!

The Village Gardeners
of the Los Angeles River

thevillagegardeners.org

Email or Phone

Password

[Log In](#)

Keep me logged in

[Forgot your password?](#)

MY EVENTS

- Upcoming
- Calendar
- Past
- Create

Alternative 20

SEP 28

LA River Alt. 20: Come out and show your support!

Public · Hosted by Los Angeles River Revitalization Corp. and ...

[Join](#) [Save](#) [Invite](#)

Saturday, September 28, 2013 at 10:00am in PDT
More than a year ago

Marsh Park
2960 Marsh St, Los Angeles, California 90039 [Show Map](#)

GUESTS

101	45	694
went	maybe	invited

[English \(US\)](#) · [Privacy](#) · [Terms](#) · [Cookies](#) · [Advertising](#) · [More](#)

Facebook © 2014

Come out and join a network of community organizations and public officials to show your support for the U.S. Army Corps of Engineer's Alternative 20, the best and most expansive LA River ecosystem restoration plan under consideration.

Key Areas in City's River Plan (2007)



River Glen/ Verdugo Wash



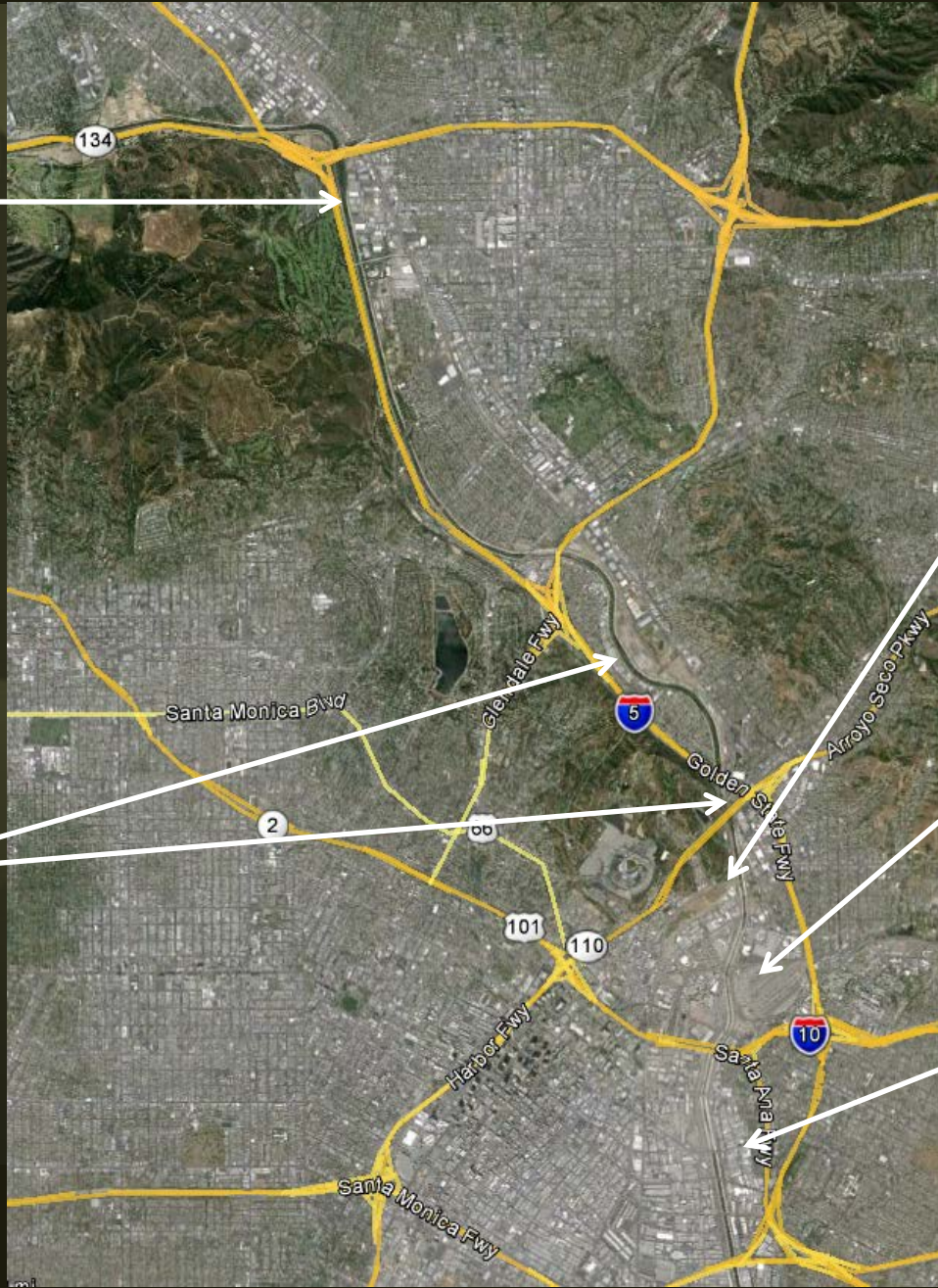
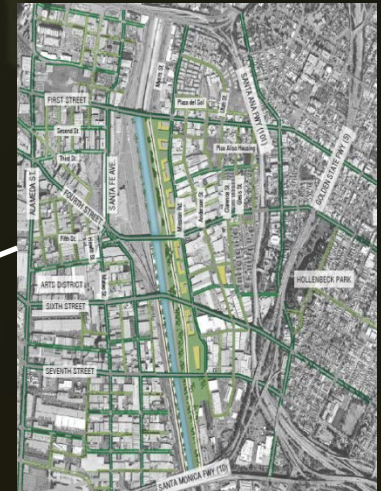
Chinatown/Cornfield & Piggyback/Mission Yard



Taylor Yard/ Arroyo Seco



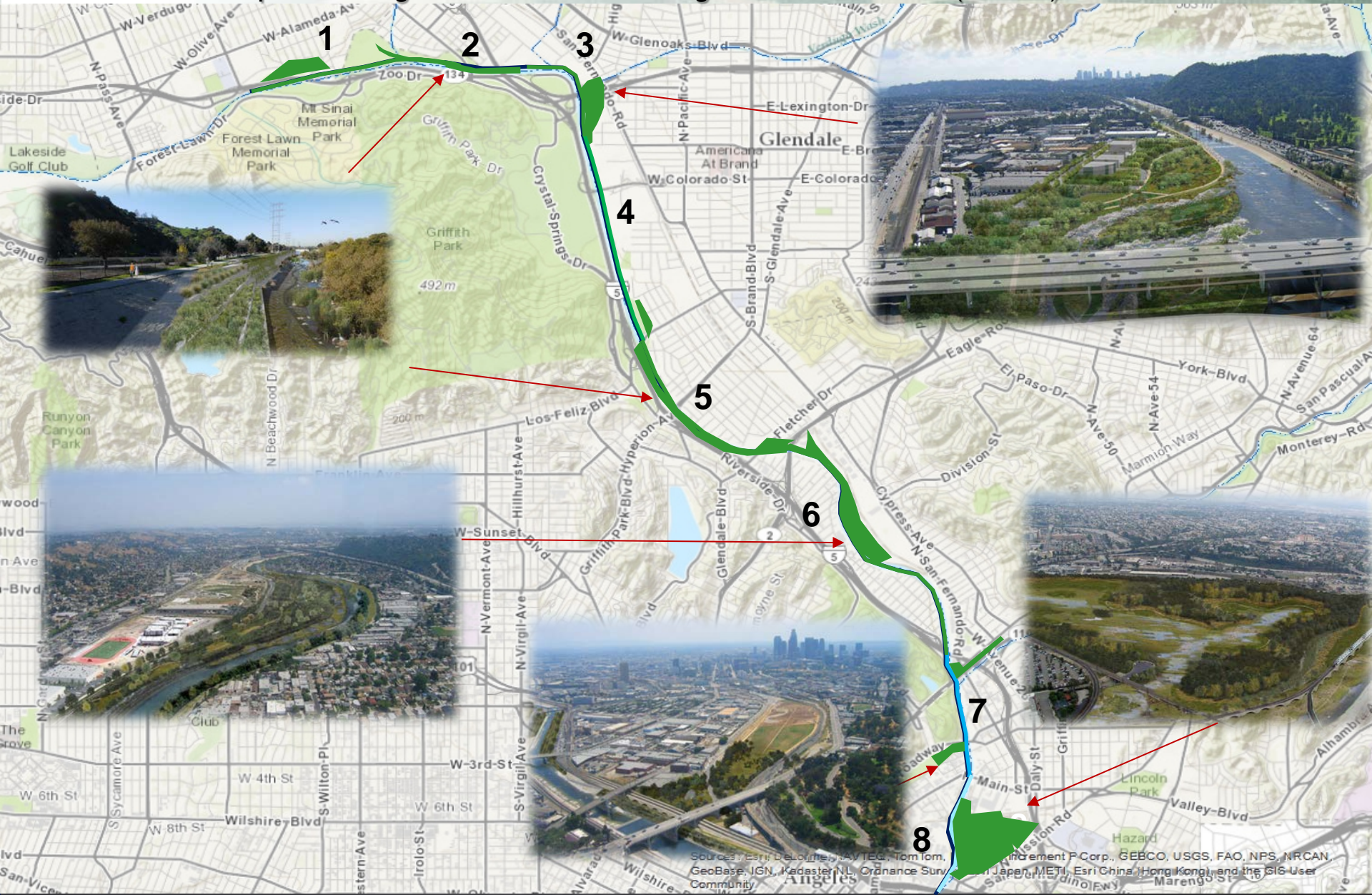
Downtown Industrial





Alt. 20: Chosen Project:

Riparian Integration via Varied Ecological Reintroduction (RIVER)



Sources: Esri, DeLorme, NAVTEQ, TomTom, Intermap, INCREMENT P Corp., GEBCO, USGS, FAO, NPS, NRCAN, GeoBase, IGN, Kadaster NL, Ordnance Survey, Esri China, Hong Kong, and the GIS User Community

FIRST-EVER LA RIVER CAMP OUT

SATURDAY MAY 31 - SUNDAY JUNE 1

Rio de Los Angeles Bowtie Parcel
2800 Casitas Ave. (apprx.)
LA, CA 90039

[Map/Directions](#)

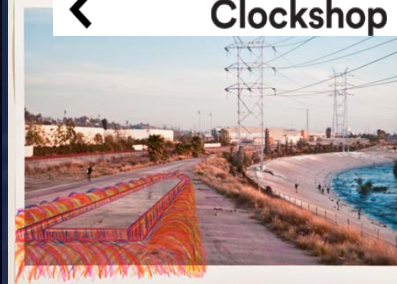
California State Parks, Clockshop and MRCA invite you to join us for the first-ever LA River public campout. We are pleased to present a late-afternoon of outdoor exploration at the Rio de Los Angeles Bowtie parcel followed by a traditional campfire program and night under the stars. This one-night opportunity will allow Angelenos a chance to camp inside the city, on the banks of the scenic LA River Glendale Narrows.

Want to camp but don't have the setup? No problem! – see details below.

Lila Higgins of the [L.A. Natural History Museum](#), Kat Superfisky of Mia Lehrer + Associates Landscape-Architecture firm and a MRCA Ranger will conduct a guided exploratory walk, discuss the native environs and plant life along the river, and lead participants through memory mapping exercises using aerial imagery from do-it-yourself balloon mapping efforts at the site of Michael Parker's sculpture "[The Unfinished](#)." Artist and veteran camper Michael Parker will also be on-site sharing camping tips and info about the sculpture.



Clockshop





Why Play? What Is Play The LA River? When & Where? Who?

<http://playthelariver.com/>

SEPTEMBER 2014 - SEPTEMBER 2015

PLAY THE LA RIVER

51 MILES & 51 WEEKS

LAUNCHING
SEPTEMBER
2014!



Welcome to *Los Angeles*

where nature catches you by surprise.

Mayor Eric Garcetti



Los Angeles
TOURISM & CONVENTION BOARD

DISCOVER THE MAYOR'S FAVORITE PLACES
DISCOVER [LOSANGELES.COM](https://www.discoverlosangeles.com)
SHARE YOUR LA MOMENTS
TAG #DISCOVERLA



Thank You.

Carol Armstrong, Director

Mayor Eric Garcetti's LARiverWorks Team

Carol.Armstrong@lacity.org

(213) 978-2173

www.lamayor.org

www.lariver.org