

Bisphenol A (BPA)

Bisphenol A (BPA) is a high-volume industrial chemical used in the production of epoxy resins and polycarbonate plastics. Polycarbonate plastics may be encountered in many products, notably food and drink containers, while epoxy resins are frequently used as inner liners of metallic food and drink containers to prevent corrosion. The use of BPA in food contact materials is regulated by the U.S. Food and Drug Administration.^{1,2} BPA also serves as a coating on some types of thermal paper that are often used as receipts from cash registers, automatic teller machines, and other similar devices. It is used in the polyvinyl chloride (PVC) industries as well as in metal foundries where it is used to make casts and moldings. The primary route of human exposure to BPA is believed to be through diet, when BPA migrates from food and drink containers.³⁻⁵ Migration is more likely to occur when the container is heated or washed.^{5,6} Other possible sources of BPA exposure include air, dust, water, and dental sealants.^{3,5}

Biomonitoring studies demonstrate that BPA exposure is prevalent in the United States, with detectable levels of BPA present in 93% of tested urine samples.⁷ Because BPA is metabolized quickly in the body,⁸ the high frequency of detection indicates that exposures are occurring regularly within the U.S. population. Exposures to BPA of infants and children up to age 6 years are estimated to be greater than BPA exposures in older children and adults.³

Much of the scientific interest in BPA is related to published research suggesting that BPA may be an endocrine disrupting chemical.^{9,10} Endocrine disruptors act by interfering with the biosynthesis, secretion, action, or metabolism of naturally occurring hormones.^{9,11} Given the importance of hormones in human physiology, there is concern in the scientific community over the potential for endocrine disruptors to adversely affect children's health, particularly in reproduction, early and adolescent development, and behavior.⁹ BPA is described as a "weakly estrogenic" chemical, because its affinity for binding to estrogen receptors is approximately 10,000-fold weaker than natural estrogen.¹²

Recent attention to the developmental effects of BPA is based on several laboratory studies and a better understanding of the mechanisms by which BPA exerts an estrogenic effect.^{10,13-15} In animal studies, exposure to high levels of BPA during pregnancy or lactation resulted in reduced birth weight, slowed growth, reduced survival, and delayed time to the onset of puberty in offspring.¹⁶⁻¹⁹ Animal studies have also found that low-dose BPA exposure was associated with insulin resistance.^{20,21} In addition, one study found that low-dose BPA exposure in pregnant animals was associated with symptoms similar to gestational diabetes, suggesting that BPA exposures may have adverse effects in pregnant women.²² Other studies have found relationships between prenatal or early-life BPA exposure and neurological effects as well as the development of breast and prostate cancer in adult animals.²³⁻²⁵ The effects of low-dose exposure to BPA in lab animals are debated within the scientific community, with some researchers finding no developmental effects, while others have identified behavioral and neural effects, abnormal urinary tract development, development of lesions in the prostate gland, and early onset of puberty in females.^{3,23,26-36} Differences in reported results on the

timing of puberty between low and high dose studies may be a result of dose differences, study design, or species of animal.³ Based on a critical review of the existing scientific literature, in 2008 the National Toxicology Program (NTP) determined that there was “some concern” (the midpoint on a five-level scale ranging from “negligible” to “serious”)ⁱ for effects of BPA on the brain, behavior, and prostate gland in fetuses, infants, and children; “minimal concern” for effects on the mammary gland and onset of puberty in females; and “negligible concern” for fetal or neonatal mortality, birth defects, or reduced birth weight and growth.³

Epidemiological data on the effects of BPA in human populations are limited. Studies of the U.S. general population have reported that adults with higher recent BPA exposure (as represented by urinary BPA concentrations) are more likely to have coronary heart disease, diabetes, immune dysfunction, and liver enzyme abnormalities.³⁷⁻³⁹ Some of these associations are postulated to be due to non-estrogenic effects of BPA,³⁸ although there is limited understanding of the mechanisms by which BPA exposure may lead to an adverse health effect. Studies of workers in China reported an association between exposure to high levels of BPA and an increased risk of self-reported sexual dysfunction,^{40,41} and that BPA exposure to pregnant workers was associated with decreased offspring birthweight.⁴² A study of children in Ohio reported an association between prenatal BPA exposure, at levels typical for the general population, and aggression and hyperactivity in 2-year-old children.⁴³ Similar associations between behavioral effects and BPA exposure have been seen in animal studies.^{3,44,45} However, another study of prenatal BPA exposure conducted in New York City found no association between prenatal BPA exposure and social behavior deficits in children at ages 7 to 9 years.⁴⁶ In 2009, the National Institutes of Health announced that it would spend \$30 million over two years to better understand the link between low-dose BPA exposure and human health effects.

Studies have shown that detectable levels of BPA are present in human urine samples from all age groups including infants, toddlers, children and adults.^{3,47-52} BPA has been identified in the blood of pregnant women,⁵³ and also can cross the placenta, potentially exposing the fetus.⁵⁴ Previous studies have identified higher levels of BPA in the urine of children ages 6 to 11 years compared with adults,^{47,49,50} and found that consumption of soda and school lunches was also associated with higher urinary BPA concentrations.⁵⁰ Infants and young children also have a higher estimated daily intake of BPA compared with adults.^{3,48} Although less information is available on BPA levels in infants than in older children, one study found that premature infants in intensive care units had greater urinary BPA concentrations than those observed in other infants or even older children, though the route of exposure for the premature infants is unclear.⁵⁵ Some laboratory animal studies have found that younger animals are less effective at metabolizing BPA than older animals are; while it has been proposed that such findings may apply to human infants and developing fetuses, this hypothesis is debated in the scientific literature.^{3,36,52,56-61} One important part of ongoing research is to better understand how BPA is absorbed, distributed, metabolized, and excreted by the body, and how those processes change with age and with route of exposure.^{56-58,60-62} Interpretation of these data will allow us to

ⁱ More information on NTP concern levels is available at <http://www.niehs.nih.gov/news/media/questions/sya-bpa.cfm>.

understand how environmental exposure equates to the internal dose routinely measured in biomonitoring studies.

The two indicators that follow use the best nationally representative data currently available on urinary BPA levels over time for women of child-bearing age and children. Indicator B11 presents median and 95th percentile concentrations of BPA in urine for women ages 16 to 49 years. Indicator B12 presents median and 95th percentile concentrations of BPA in urine for children ages 6 to 17 years.

Indicator B11: Bisphenol A in women ages 16 to 49 years: Median and 95th percentile concentrations in urine, 2003–2010

Indicator B12: Bisphenol A in children ages 6 to 17 years: Median and 95th percentile concentrations in urine, 2003–2010

About the Indicators: Indicators B11 and B12 present concentrations of bisphenol A (BPA) in urine of U.S. women ages 16 to 49 years and children ages 6 to 17 years. The data are from a national survey that collects urine specimens from a representative sample of the population every two years, and then measures the concentration of total BPA in the urine. Indicator B11 presents concentrations of BPA in women's urine over time and Indicator B12 presents concentrations of BPA in children's urine over time. The focus on both women of child-bearing age and children is based on concern for potential adverse effects in children born to women who have been exposed to BPA and in children exposed to BPA.

NHANES

The National Health and Nutrition Examination Survey (NHANES) provides nationally representative biomonitoring data for BPA. NHANES is designed to assess the health and nutritional status of the civilian noninstitutionalized U.S. population and is conducted by the National Center for Health Statistics, part of the Centers for Disease Control and Prevention (CDC). Interviews and physical examinations are conducted with approximately 10,000 people in each two-year survey cycle. CDC's National Center for Environmental Health measures concentrations of environmental chemicals in blood and urine samples collected from NHANES participants. Summaries of the measured values for more than 200 chemicals are provided in the *Fourth National Report on Human Exposure to Environmental Chemicals*.⁶³

Bisphenol A and its Metabolites

Indicators B11 and B12 present urinary levels of BPA in women of child-bearing age and children. The reported measurements of BPA in urine represent "total BPA," which includes both free BPA and non-estrogenic metabolites of BPA (only free BPA is considered active based on measures of estrogenicity). Measured levels in the U.S. population may be composed predominantly of these metabolites,⁶⁴ but total BPA levels reflect previous exposure to the biologically active form of BPA and there is debate in the scientific community over the potential for conversion of non-estrogenic metabolites back to free BPA in various tissues.⁶⁵ Recent work has also highlighted the potential for conversion of non-estrogenic metabolites of BPA to the active form when crossing the placenta, increasing the relevance of total BPA measurements to children's health.^{54,66} All values are reported as micrograms of BPA per liter of urine ($\mu\text{g/L}$).

Concentrations of BPA in urine have been measured in a representative subset of NHANES participants ages 6 years and older beginning with the 2003–2004 survey cycle. In 2009–2010,

NHANES collected BPA biomonitoring data for 2,749 individuals ages 6 years and older, including 608 women ages 16 to 49 years and 727 children ages 6 to 17 years. BPA was detected in about 90% of all individuals sampled. The frequency of BPA detection was 92% in women ages 16 to 49 years,ⁱⁱ and 92% in children ages 6 to 17 years. The median and 95th percentile BPA levels in urine for all NHANES participants in 2009–2010 were 2 µg/L and 10 µg/L, respectively. The widespread detection of BPA, combined with the fact that BPA has a short half-life, indicates that BPA exposure is widespread and relatively continuous.

Individual Variability in Urinary Measurements

NHANES data for BPA are based on measurements made using a single urine sample for each person surveyed. Due to normal changes in an individual's urinary output throughout the day, this variability in urinary volume, among other factors related to the measurement of chemicals that do not accumulate in the body,⁶⁷ may mask differences between individuals in levels of BPA. Since BPA does not appear to accumulate in bodily tissues, the distribution of NHANES urinary BPA levels may overestimate high-end exposures (e.g., at the 95th percentile) as a result of collecting one-time urine samples.^{8,68,69} Many studies account for differences in hydration levels by reporting the chemical concentration per gram of creatinine. Creatinine is a byproduct of muscle metabolism that is excreted in urine at a relatively constant rate, independent of the volume of urine, and can in some circumstances partially account for the measurement variability due to changes in urinary output.⁷⁰ However, urinary creatinine concentrations differ significantly among different demographic groups, and are strongly associated with an individual's muscle mass, age, sex, diet, health status (specifically renal function), body mass index, and pregnancy status.^{71,72} Thus, these indicators present the unadjusted BPA concentrations so that any observed differences in concentrations between demographic groups are not due to differences in creatinine excretion rates. These unadjusted urinary levels from a single sample may either over- or underestimate urinary levels for a sampled individual. However, for a representative group, it can be expected that a median value based on single samples taken throughout the day will provide a good approximation of the median for that group. Furthermore, due to the large number of subjects surveyed, we expect that differences in the concentrations of BPA that might be attributed to the volume of the urine sample would average out within and across the various comparison groups.

Birth Rate Adjustment

Indicator B11 uses measurements of BPA in urine of women ages 16 to 49 years to represent the distribution of BPA exposures to women who are pregnant or may become pregnant. However, women of different ages have a different likelihood of giving birth. For example, in 2003–2004, women aged 27 had a 12% probability of giving birth, and women aged 37 had a 4% probability of giving birth.⁷³ A birth rate-adjusted distribution of women's BPA levels is used

ⁱⁱ The percentage for women ages 16 to 49 years is calculated with the birth rate adjustment described below.

in calculating this indicator,ⁱⁱⁱ meaning that the data are weighted using the age-specific probability of a woman giving birth.⁷⁴

Data Presented in the Indicators

Indicators B11 presents median and 95th percentile concentrations of BPA in urine over time for women ages 16 to 49 years, using NHANES data from 2003–2010.

Indicator B12 presents median and 95th percentile concentrations of BPA in urine over time for children ages 6 to 17 years, using NHANES data from 2003–2010.

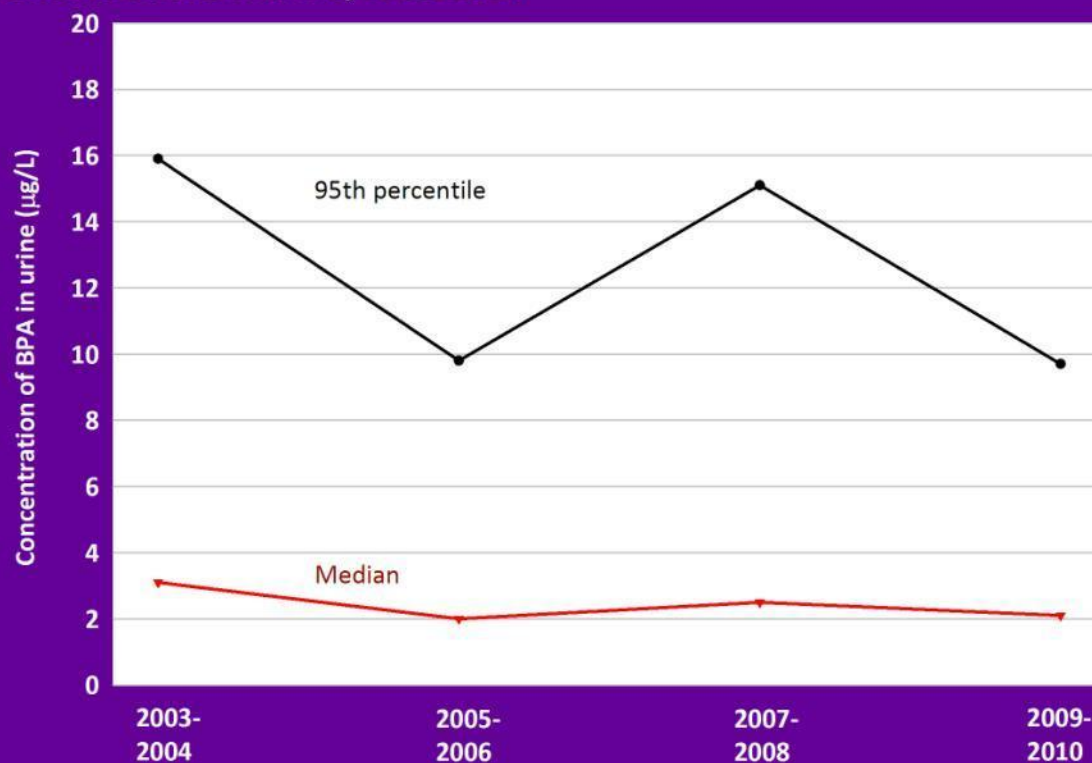
Additional information showing how the median and 95th percentile levels of BPA in urine vary by race/ethnicity and family income for women ages 16 to 49 years is presented in supplemental data tables for these indicators. Data tables also display information showing how the median and 95th percentile levels of BPA in urine vary by race/ethnicity, family income, and age for children ages 6 to 17 years.

Please see the Introduction to the Biomonitoring section for an explanation of the terms “median” and “95th percentile,” a description of the race/ethnicity and income groups used in the ACE3 biomonitoring indicators, and information on the statistical significance testing applied to these indicators.

ⁱⁱⁱ There may be multiple ways to implement an adjustment to the data that accounts for birth rates by age. The National Center for Health Statistics has not fully evaluated the method used in ACE, or any other method intended to accomplish the same purpose, and has not used any such method in its publications. NCHS and EPA are working together to further evaluate the birth rate adjustment method used in ACE and alternative methods.

Indicator B11

Bisphenol A in women ages 16 to 49 years: Median and 95th percentile concentrations in urine, 2003-2010



Data: Centers for Disease Control and Prevention, National Center for Health Statistics and National Center for Environmental Health, National Health and Nutrition Examination Survey

Note: To reflect exposures to women who are pregnant or may become pregnant, the estimates are adjusted for the probability (by age and race/ethnicity) that a woman gives birth.

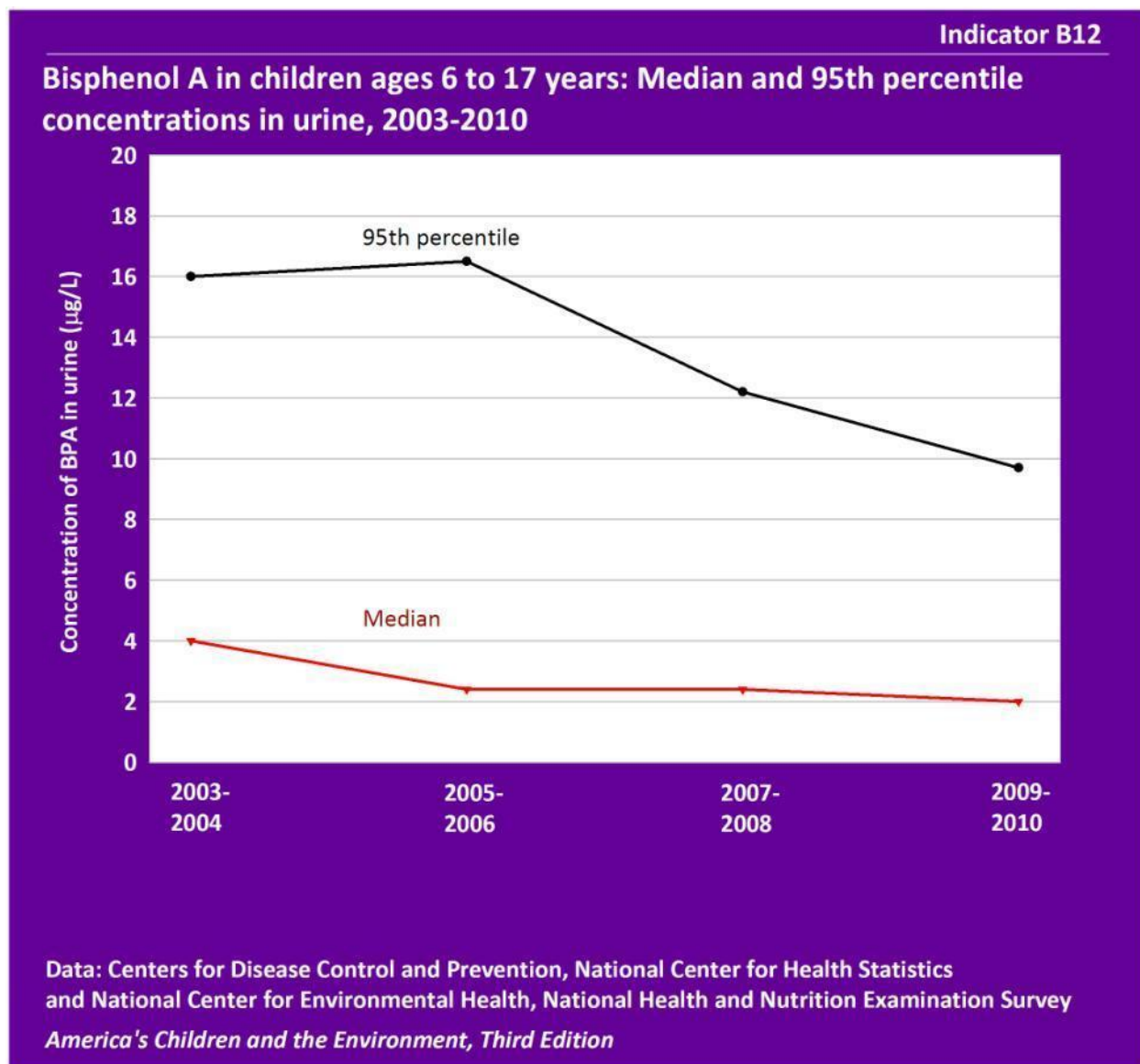
America's Children and the Environment, Third Edition

Data characterization

- Data for this indicator are obtained from an ongoing continuous survey conducted by the National Center for Health Statistics.
- Survey data are representative of the U.S. civilian noninstitutionalized population.
- BPA is measured in urine samples obtained from individual survey participants.

- From 2003–2004 to 2009–2010, the median concentration of BPA in urine among women ages 16 to 49 years varied between 2 µg/L and 3 µg/L. There was no statistically significant trend in median BPA levels over the years shown.
- From 2003–2004 to 2009–2010, the concentrations of BPA in urine at the 95th percentile varied between 10 µg/L and 16 µg/L, and was 10 µg/L in 2009–2010. There was no statistically significant trend in 95th percentile concentrations of BPA over the years shown.

- Between 2003–2004 and 2009–2010, the concentrations of BPA in the 95th percentile ranged from 5 to 6 times the median levels for women ages 16 to 49 years.
- In 2007–2010, the median concentration of BPA in urine of Black non-Hispanic women was about 4 µg/L, which was higher than the median concentrations in White non-Hispanic women, Mexican-American women, and women of “All Other Races/Ethnicities.” The differences between Black non-Hispanic women and women in other race/ethnicity groups were statistically significant. (See Table B11a.)
- Women living below the poverty level had higher median concentrations of BPA in urine than those living at or above poverty level, a difference that was statistically significant. (See Table B11a.)
- Among White non-Hispanic women and women of “All Other Races/Ethnicities,” those with family incomes below poverty level had higher median concentrations of BPA in urine than those at or above poverty level. The differences between the income groups were statistically significant. (See Table B11a.)
- Higher concentrations of BPA were observed in the urine of women below the poverty level at the 95th percentile (15 µg/L) compared with women at or above the poverty level (11 µg/L). This difference was statistically significant after adjustment for differences in age and race/ethnicity. (See Table B11b.)
- White non-Hispanic women at the 95th percentile (10 µg/L) had lower concentrations of BPA in urine than Black non-Hispanic women (15 µg/L) and Mexican-American women (15 µg/L). These differences were statistically significant after adjustment for differences in age and income. (See Table B11b.)

**Data characterization**

- Data for this indicator are obtained from an ongoing continuous survey conducted by the National Center for Health Statistics.
- Survey data are representative of the U.S. civilian noninstitutionalized population.
- BPA is measured in urine samples obtained from individual survey participants.

- Among children ages 6 to 17 years, the median concentration of BPA in urine of children ages 6 to 17 years decreased from 4 µg/L in 2003–2004 to 2 µg/L in 2009–2010. The concentration of BPA in urine at the 95th percentile decreased from 16 µg/L in 2003–2004 to 10 µg/L in 2009–2010. These decreasing trends were statistically significant.
- Between 2003–2004 and 2009–2010, the concentrations of BPA in the 95th percentile ranged from 4 to 7 times the median levels for children ages 6 to 17 years.

- In 2007–2010, median concentrations of BPA in urine of Black non-Hispanic children ages 6 to 17 years were higher than in White non-Hispanic children, Mexican-American children, and children of “All Other Races/Ethnicities.” These differences were statistically significant. (See Table B12a.)
- BPA concentrations at the 95th percentile were similar for Black non-Hispanic, White-non Hispanic, and Mexican-American children ages 6 to 17 years in 2007–2010. (See Table B12b.)
- In 2007–2010, BPA concentrations were similar for age groups 6 to 10 years, 11 to 15 years, and 16 to 17 years, both at the median and at the 95th percentile. (See Table B12c.)

Biomonitoring

Bisphenol A (BPA)

1. U.S. Food and Drug Administration. 2012. *Bisphenol A (BPA): Use in Food Contact Application*. U.S. Department of Health and Human Services, Food and Drug Administration. Retrieved June 26, 2012 from <http://www.fda.gov/NewsEvents/PublicHealthFocus/ucm064437.htm>.
2. U.S. Food and Drug Administration. 2009. *Summary of Bisphenol A Biomonitoring Studies*. Washington, DC: U.S. Department of Health and Human Services, Food and Drug Administration. Memorandum from V. Komolprasert, dated November 16, 2009. <http://www.regulations.gov/#!documentDetail;D=FDA-2010-N-0100-0010>.
3. National Toxicology Program. 2008. *NTP-CERHR Monograph on the Potential Human Reproductive and Developmental Effects of Bisphenol A*. Research Triangle Park, NC: National Institute of Environmental Health Sciences, National Toxicology Program. <http://ntp.niehs.nih.gov/ntp/ohat/bisphenol/bisphenol.pdf>.
4. Schecter, A., N. Malik, D. Haffner, S. Smith, T.R. Harris, O. Paepke, and L. Birnbaum. 2010. Bisphenol A (BPA) in U.S. food. *Environmental Science and Technology* 44 (24):9425-30.
5. Vandenberg, L.N., R. Hauser, M. Marcus, N. Olea, and W.V. Welshons. 2007. Human exposure to bisphenol A (BPA). *Reproductive Toxicology* 24 (2):139-77.
6. Le, H.H., E.M. Carlson, J.P. Chua, and S.M. Belcher. 2008. Bisphenol A is released from polycarbonate drinking bottles and mimics the neurotoxic actions of estrogen in developing cerebellar neurons. *Toxicology Letters* 176 (2):149-56.
7. Calafat, A.M., X. Ye, L.Y. Wong, J.A. Reidy, and L.L. Needham. 2008. Exposure of the U.S. population to bisphenol A and 4-tertiary-octylphenol: 2003-2004. *Environmental Health Perspectives* 116 (1):39-44.
8. Völkel, W., T. Colnot, G.A. Csanady, J.G. Filser, and W. Dekant. 2002. Metabolism and kinetics of bisphenol a in humans at low doses following oral administration. *Chemical Research in Toxicology* 15 (10):1281-7.
9. Diamanti-Kandarakis, E., J.P. Bourguignon, L.C. Giudice, R. Hauser, G.S. Prins, A.M. Soto, R.T. Zoeller, and A.C. Gore. 2009. Endocrine-disrupting chemicals: an Endocrine Society scientific statement. *Endocrine Reviews* 30 (4):293-342.
10. vom Saal, F.S., B.T. Akingbemi, S.M. Belcher, L.S. Birnbaum, D.A. Crain, M. Eriksen, F. Farabolini, L.J. Guillette, Jr., R. Hauser, J.J. Heindel, et al. 2007. Chapel Hill bisphenol A expert panel consensus statement: integration of mechanisms, effects in animals and potential to impact human health at current levels of exposure. *Reproductive Toxicology* 24 (2):131-8.
11. Kavlock, R.J., G.P. Daston, C. DeRosa, P. Fenner-Crisp, L.E. Gray, S. Kaattari, G. Lucier, M. Luster, M.J. Mac, C. Maczka, et al. 1996. Research needs for the risk assessment of health and environmental effects of endocrine disruptors: a report of the U.S. EPA-sponsored workshop. *Environmental Health Perspectives* 104 Suppl 4:715-40.
12. Kuiper, G.G., J.G. Lemmen, B. Carlsson, J.C. Corton, S.H. Safe, P.T. van der Saag, B. van der Burg, and J.A. Gustafsson. 1998. Interaction of estrogenic chemicals and phytoestrogens with estrogen receptor beta. *Endocrinology* 139 (10):4252-63.
13. Golub, M.S., K.L. Wu, F.L. Kaufman, L.H. Li, F. Moran-Messen, L. Zeise, G.V. Alexeef, and J.M. Donald. 2010. Bisphenol A: developmental toxicity from early prenatal exposure. *Birth Defects Research. Part B, Developmental and Reproductive Toxicology* 89 (6):441-66.
14. Welshons, W.V., K.A. Thayer, B.M. Judy, J.A. Taylor, E.M. Curran, and F.S. vom Saal. 2003. Large effects from small exposures. I. Mechanisms for endocrine-disrupting chemicals with estrogenic activity. *Environmental Health Perspectives* 111 (8):994-1006.
15. Wetherill, Y.B., B.T. Akingbemi, J. Kanno, J.A. McLachlan, A. Nadal, C. Sonnenschein, C.S. Watson, R.T. Zoeller, and S.M. Belcher. 2007. In vitro molecular mechanisms of bisphenol A action. *Reproductive Toxicology* 24 (2):178-98.
16. Tyl, R.W., C.B. Myers, M.C. Marr, B.F. Thomas, A.R. Keimowitz, D.R. Brine, M.M. Veselica, P.A. Fail, T.Y. Chang, J.C. Seely, et al. 2002. Three-generation reproductive toxicity study of dietary bisphenol A in CD Sprague-Dawley rats. *Toxicological Sciences* 68 (1):121-46.
17. Tyl, R.W., C.B. Myers, M.C. Marr, C.S. Sloan, N.P. Castillo, M.M. Veselica, J.C. Seely, S.S. Dimond, J.P. Van Miller, R.N. Shiotsuka, et al. 2008. Two-generation reproductive toxicity study of dietary bisphenol A in CD-1 (Swiss) mice. *Toxicological Sciences* 104 (2):362-84.
18. Morrissey, R.E., J.D. George, C.J. Price, R.W. Tyl, M.C. Marr, and C.A. Kimmel. 1987. The developmental toxicity of bisphenol A in rats and mice. *Fundamental and Applied Toxicology* 8 (4):571-82.
19. Kim, J.C., H.C. Shin, S.W. Cha, W.S. Koh, M.K. Chung, and S.S. Han. 2001. Evaluation of developmental toxicity in rats exposed to the environmental estrogen bisphenol A during pregnancy. *Life Sciences* 69 (22):2611-25.
20. Alonso-Magdalena, P., S. Morimoto, C. Ripoll, E. Fuentes, and A. Nadal. 2006. The estrogenic effect of bisphenol A disrupts pancreatic beta-cell function in vivo and induces insulin resistance. *Environmental Health Perspectives* 114 (1):106-12.
21. Batista, T.M., P. Alonso-Magdalena, E. Vieira, M.E. Amaral, C.R. Cederroth, S. Nef, I. Quesada, E.M. Carneiro, and A. Nadal. 2012. Short-term treatment with bisphenol-A leads to metabolic abnormalities in adult male mice. *PLoS ONE* 7 (3):e33814.
22. Alonso-Magdalena, P., E. Vieira, S. Soriano, L. Menes, D. Burks, I. Quesada, and A. Nadal. 2010. Bisphenol A exposure during pregnancy disrupts glucose homeostasis in mothers and adult male offspring. *Environmental Health Perspectives* 118 (9):1243-50.

Bisphenol A (BPA) (continued)

23. Ho, S.M., W.Y. Tang, J. Belmonte de Frausto, and G.S. Prins. 2006. Developmental exposure to estradiol and bisphenol A increases susceptibility to prostate carcinogenesis and epigenetically regulates phosphodiesterase type 4 variant 4. *Cancer Research* 66 (11):5624-5632.
24. Soto, A.M., L.N. Vandenberg, M.V. Maffini, and C. Sonnenschein. 2008. Does breast cancer start in the womb? *Basic & Clinical Pharmacology & Toxicology* 102 (2):125-33.
25. Weber Lozada, K., and R.A. Keri. 2011. Bisphenol A increases mammary cancer risk in two distinct mouse models of breast cancer. *Biology of Reproduction* 85 (3):490-7.
26. Beronius, A., C. Rudén, H. Håkansson, and A. Hanberg. 2010. Risk to all or none?: A comparative analysis of controversies in the health risk assessment of Bisphenol A. *Reproductive Toxicology* 29 (2):132-146.
27. Durando, M., L. Kass, J. Piva, C. Sonnenschein, A.M. Soto, E.H. Luque, and M. Munoz-de-Toro. 2007. Prenatal bisphenol A exposure induces preneoplastic lesions in the mammary gland in Wistar rats. *Environmental Health Perspectives* 115 (1):80-6.
28. Gioiosa, L., E. Fissore, G. Ghirardelli, S. Parmigiani, and P. Palanza. 2007. Developmental exposure to low-dose estrogenic endocrine disruptors alters sex differences in exploration and emotional responses in mice. *Hormones and Behavior* 52 (3):307-16.
29. Howdeshell, K.L., J. Furr, C.R. Lambright, V.S. Wilson, B.C. Ryan, and L.E. Gray, Jr. 2008. Gestational and lactational exposure to ethinyl estradiol, but not bisphenol A, decreases androgen-dependent reproductive organ weights and epididymal sperm abundance in the male long evans hooded rat. *Toxicological Sciences* 102 (2):371-82.
30. Howdeshell, K.L., A.K. Hotchkiss, K.A. Thayer, J.G. Vandenberg, and F.S. vom Saal. 1999. Exposure to bisphenol A advances puberty. *Nature* 401 (6755):763-4.
31. Miyagawa, K., M. Narita, H. Akama, and T. Suzuki. 2007. Memory impairment associated with a dysfunction of the hippocampal cholinergic system induced by prenatal and neonatal exposures to bisphenol-A. *Neuroscience Letters* 418 (3):236-41.
32. Palanza, P., L. Gioiosa, F.S. vom Saal, and S. Parmigiani. 2008. Effects of developmental exposure to bisphenol A on brain and behavior in mice. *Environmental Research* 108 (2):150-7.
33. Palanza, P.L., K.L. Howdeshell, S. Parmigiani, and F.S. vom Saal. 2002. Exposure to a low dose of bisphenol A during fetal life or in adulthood alters maternal behavior in mice. *Environmental Health Perspectives* 110 Suppl 3:415-22.
34. Sharpe, R.M. 2010. Is it time to end concerns over the estrogenic effects of bisphenol A? *Toxicological Sciences* 114 (1):1-4.
35. Vandenberg, L.N., M.V. Maffini, C. Sonnenschein, B.S. Rubin, and A.M. Soto. 2009. Bisphenol-A and the great divide: a review of controversies in the field of endocrine disruption. *Endocrine Reviews* 30 (1):75-95.
36. vom Saal, F.S., and C. Hughes. 2005. An extensive new literature concerning low-dose effects of bisphenol A shows the need for a new risk assessment. *Environmental Health Perspectives* 113 (8):926-33.
37. Clayton, E.M.R., M. Todd, J.B. Dowd, and A.E. Aiello. 2011. The impact of bisphenol A and triclosan on immune parameters in the U.S. population, NHANES 2003–2006. *Environmental Health Perspectives* 119 (3):390-396.
38. Lang, I.A., T.S. Galloway, A. Scarlett, W.E. Henley, M. Depledge, R.B. Wallace, and D. Melzer. 2008. Association of urinary bisphenol A concentration with medical disorders and laboratory abnormalities in adults. *Journal of the American Medical Association* 300 (11):1303-10.
39. Melzer, D., N.E. Rice, C. Lewis, W.E. Henley, and T.S. Galloway. 2010. Association of Urinary Bisphenol A Concentration with Heart Disease: Evidence from NHANES 2003/06. *PLoS ONE* 5 (1):e8673.
40. Li, D., Z. Zhou, D. Qing, Y. He, T. Wu, M. Miao, J. Wang, X. Weng, J.R. Ferber, L.J. Herrinton, et al. 2010. Occupational exposure to bisphenol-A (BPA) and the risk of Self-Reported Male Sexual Dysfunction. *Human Reproduction* 25 (2):519-527.
41. Li, D.-K., Z. Zhou, M. Miao, Y. He, D. Qing, T. Wu, J. Wang, X. Weng, J. Ferber, L.J. Herrinton, et al. 2010. Relationship Between Urine Bisphenol-A Level and Declining Male Sexual Function. *Journal of Andrology* 31 (5):500-506.
42. Miao, M., W. Yuan, G. Zhu, X. He, and D.-K. Li. 2011. In utero exposure to bisphenol-A and its effect on birth weight of offspring. *Reproductive Toxicology* 32 (1):64-8.
43. Braun, J.M., K. Yolton, K.N. Dietrich, R. Hornung, X. Ye, A.M. Calafat, and B.P. Lanphear. 2009. Prenatal Bisphenol A Exposure and Early Childhood Behavior. *Environmental Health Perspectives* 117 (12):1945-1952.
44. Ishido, M., Y. Masuo, M. Kunimoto, S. Oka, and M. Morita. 2004. Bisphenol A causes hyperactivity in the rat concomitantly with impairment of tyrosine hydroxylase immunoreactivity. *Journal of Neuroscience Research* 76 (3):423-433.
45. Kawai, K., T. Nozaki, H. Nishikata, S. Aou, M. Takii, and C. Kubo. 2003. Aggressive behavior and serum testosterone concentration during the maturation process of male mice: The effects of fetal exposure to bisphenol A. *Environmental Health Perspectives* 111 (2):175-180.
46. Miodovnik, A., S.M. Engel, C. Zhu, X. Ye, L.V. Soorya, M.J. Silva, A.M. Calafat, and M.S. Wolff. 2011. Endocrine disruptors and childhood social impairment. *Neurotoxicology* 32 (2):261-267.

Bisphenol A (BPA) (continued)

47. Bushnik, T., D. Haines, P. Levallois, J. Levesque, J. Van Oostdam, and C. Viau. 2010. Lead and bisphenol A concentrations in the Canadian population. *Health Reports, Statistics Canada* 21 (3):7-18.
48. Chapin, R.E., J. Adams, K. Boekelheide, L.E. Gray, Jr., S.W. Hayward, P.S. Lees, B.S. McIntyre, K.M. Portier, T.M. Schnorr, S.G. Selevan, et al. 2008. NTP-CERHR expert panel report on the reproductive and developmental toxicity of bisphenol A. *Birth Defects Research Part B: Developmental and Reproductive Toxicology* 83 (3):157-395.
49. Lakind, J.S., and D.Q. Naiman. 2008. Bisphenol A (BPA) daily intakes in the United States: estimates from the 2003-2004 NHANES urinary BPA data. *Journal of Exposure Science and Environmental Epidemiology* 18 (6):608-15.
50. Lakind, J.S., and D.Q. Naiman. 2011. Daily intake of bisphenol A and potential sources of exposure: 2005-2006 National Health and Nutrition Examination Survey. *Journal of Exposure Science and Environmental Epidemiology* 21 (3):272-9.
51. Morgan, M.K., P.A. Jones, A.M. Calafat, X. Ye, C.W. Croghan, J.C. Chuang, N.K. Wilson, M.S. Clifton, Z. Figueroa, and L.S. Sheldon. 2011. Assessing the quantitative relationships between preschool children's exposures to bisphenol A by route and urinary biomonitoring. *Environmental Science and Technology* 45 (12):5309-16.
52. Völkel, W., M. Kiranoglu, and H. Fromme. 2011. Determination of free and total bisphenol A in urine of infants. *Environmental Research* 111 (1):143-148.
53. Padmanabhan, V., K. Siefert, S. Ransom, T. Johnson, J. Pinkerton, L. Anderson, L. Tao, and K. Kannan. 2008. Maternal bisphenol-A levels at delivery: a looming problem? *Journal of Perinatology* 28 (4):258-63.
54. Balakrishnan, B., K. Henare, E.B. Thorstensen, A.P. Ponnampalam, and M.D. Mitchell. 2010. Transfer of bisphenol A across the human placenta. *American Journal of Obstetrics and Gynecology* 202 (4):393.e1-393.e7.
55. Calafat, A.M., J. Weuve, X. Ye, L.T. Jia, H. Hu, S. Ringer, K. Huttner, and R. Hauser. 2009. Exposure to bisphenol A and other phenols in neonatal intensive care unit premature infants. *Environmental Health Perspectives* 117 (4):639-44.
56. Doerge, D.R., N.C. Twaddle, M. Vanlandingham, and J.W. Fisher. 2010. Pharmacokinetics of bisphenol A in neonatal and adult Sprague-Dawley rats. *Toxicology and Applied Pharmacology* 247 (2):158-165.
57. Doerge, D.R., N.C. Twaddle, M. Vanlandingham, and J.W. Fisher. 2011. Pharmacokinetics of bisphenol A in neonatal and adult CD-1 mice: inter-species comparisons with Sprague-Dawley rats and rhesus monkeys. *Toxicology Letters* 207 (3):298-305.
58. Doerge, D.R., N.C. Twaddle, K.A. Woodling, and J.W. Fisher. 2010. Pharmacokinetics of bisphenol A in neonatal and adult rhesus monkeys. *Toxicology and Applied Pharmacology* 248 (1):1-11.
59. Domoradzki, J.Y., C.M. Thornton, L.H. Pottenger, S.C. Hansen, T.L. Card, D.A. Markham, M.D. Dryzga, R.N. Shiotsuka, and J.M. Waechter, Jr. 2004. Age and dose dependency of the pharmacokinetics and metabolism of bisphenol A in neonatal sprague-dawley rats following oral administration. *Toxicological Sciences* 77 (2):230-42.
60. Fisher, J.W., N.C. Twaddle, M. Vanlandingham, and D.R. Doerge. 2011. Pharmacokinetic modeling: prediction and evaluation of route dependent dosimetry of bisphenol A in monkeys with extrapolation to humans. *Toxicology and Applied Pharmacology* 257 (1):122-36.
61. Taylor, J.A., F.S. vom Saal, W.V. Welshons, B. Drury, G. Rottinghaus, P.A. Hunt, P.-L. Toutain, C.M. Laffont, and C.A. VandeVoort. 2011. Similarity of bisphenol A pharmacokinetics in rhesus monkeys and mice: Relevance for human exposure. *Environmental Health Perspectives* 119 (4):422-430.
62. Doerge, D.R., M. Vanlandingham, N.C. Twaddle, and K.B. Delclos. 2010. Lactational transfer of bisphenol A in Sprague-Dawley rats. *Toxicology Letters* 199 (3):372-376.
63. Centers for Disease Control and Prevention. 2009. *Fourth National Report on Human Exposure to Environmental Chemicals*. Atlanta, GA: CDC. <http://www.cdc.gov/exposurereport/>.
64. Vandenberg, L.N., I. Chahoud, J.J. Heindel, V. Padmanabhan, F.J. Paumgartten, and G. Schoenfelder. 2010. Urinary, circulating, and tissue biomonitoring studies indicate widespread exposure to bisphenol A. *Environmental Health Perspectives* 118 (8):1055-70.
65. Ginsberg, G., and D.C. Rice. 2009. Does rapid metabolism ensure negligible risk from bisphenol A? *Environmental Health Perspectives* 117 (11):1639-43.
66. Nishikawa, M., H. Iwano, R. Yanagisawa, N. Koike, H. Inoue, and H. Yokota. 2010. Placental transfer of conjugated bisphenol A and subsequent reactivation in the rat fetus. *Environmental Health Perspectives* 118 (9):1196-203.
67. Ye, X., L.Y. Wong, A.M. Bishop, and A.M. Calafat. 2011. Variability of urinary concentrations of bisphenol a in spot samples, first morning voids, and 24-hour collections. *Environmental Health Perspectives* 119 (7):983-8.
68. Mendez, W., E. Dederick, and J. Cohen. 2010. Drinking water contribution to aggregate perchlorate intake of reproductive-age women in the United States estimated by dietary intake simulation and analysis of urinary excretion data. *Journal of Exposure Science and Environmental Epidemiology* 20 (3):288-97.
69. Preau, J.L., Jr., L.Y. Wong, M.J. Silva, L.L. Needham, and A.M. Calafat. 2010. Variability over 1 week in the urinary concentrations of metabolites of diethyl phthalate and di(2-ethylhexyl) phthalate among eight adults: an observational study. *Environmental Health Perspectives* 118 (12):1748-54.

Bisphenol A (BPA) (continued)

70. Jackson, S. 1966. Creatinine in urine as an index of urinary excretion rate. *Health Physics* 12 (6):843-50.
71. Barr, D.B., L.C. Wilder, S.P. Caudill, A.J. Gonzalez, L.L. Needham, and J.L. Pirkle. 2005. Urinary creatinine concentrations in the U.S. population: implications for urinary biologic monitoring measurements. *Environmental Health Perspectives* 113 (2):192-200.
72. Boeniger, M.F., L.K. Lowry, and J. Rosenberg. 1993. Interpretation of urine results used to assess chemical exposure with emphasis on creatinine adjustments: A review. *American Industrial Hygiene Association Journal* 54 (10):615-27.
73. National Center for Health Statistics. *Vital Statistics Natality Birth Data*. Retrieved June 15, 2009 from http://www.cdc.gov/nchs/data_access/Vitalstatsonline.htm.
74. Axelrad, D.A., and J. Cohen. 2011. Calculating summary statistics for population chemical biomonitoring in women of childbearing age with adjustment for age-specific natality. *Environmental Research* 111 (1):149-155.

Biomonitoring

Bisphenol A (BPA)

Table B11: Bisphenol A in women ages 16 to 49 years: Median and 95th percentile concentrations in urine, 2003-2010

	Concentration of BPA in urine (µg/L)			
	2003-2004	2005-2006	2007-2008	2009-2010
Median	3.1	2.0	2.5	2.1
95th percentile	15.9	9.8	15.1	9.7

DATA: Centers for Disease Control and Prevention, National Center for Health Statistics and National Center for Environmental Health, National Health and Nutrition Examination Survey

NOTES:

- To reflect exposures to women who are pregnant or may become pregnant, the estimates are adjusted for the probability (by age and race/ethnicity) that a woman gives birth. The intent of this adjustment is to approximate the distribution of exposure to pregnant women. Results will therefore differ from a characterization of exposure to adult women without consideration of birth rates.
- BPA does not appear to accumulate in bodily tissues; thus the distribution of NHANES urinary BPA levels may overestimate high-end exposures as a result of collecting one-time urine samples rather than collecting urine for a longer time period.⁶⁻⁸

Table B11a: Bisphenol A in women ages 16 to 49 years: Median concentrations in urine, by race/ethnicity and family income, 2007-2010

Race / Ethnicity	Median concentration of BPA in urine (µg/L)		
	All Incomes‡ (n=1,179)	< Poverty Level (n=329)	≥ Poverty Level (n=755)
All Races/Ethnicities (n=1,179)	2.3	3.0	2.1
White non-Hispanic (n=499)	2.1	3.3	2.0
Black non-Hispanic (n=242)	3.7	3.3*	4.2
Mexican-American (n=227)	2.3	2.2*	2.3
All Other Races/Ethnicities† (n=211)	2.1	3.1*	1.8

DATA: Centers for Disease Control and Prevention, National Center for Health Statistics and National Center for Environmental Health, National Health and Nutrition Examination Survey

NOTES:

- To reflect exposures to women who are pregnant or may become pregnant, the estimates are adjusted for the probability (by age and race/ethnicity) that a woman gives birth. The intent of this adjustment is to approximate the distribution of exposure to pregnant women. Results will therefore differ from a characterization of exposure to adult women without consideration of birth rates.
- The reported measurements of BPA in urine include both BPA itself and biologically inactive metabolites of BPA.

† The “All Other Races/Ethnicities” category includes all other races or ethnicities not specified, together with those individuals who report more than one race.

‡ Includes sampled individuals for whom income information is missing.

*The estimate should be interpreted with caution because the standard error of the estimate is relatively large: the relative standard error, RSE, is at least 30% but is less than 40% (RSE = standard error divided by the estimate), or the RSE may be underestimated.

Table B11b: Bisphenol A in women ages 16 to 49 years: 95th percentile concentrations in urine, by race/ethnicity and family income, 2007-2010

Race / Ethnicity	95 th percentile concentration of BPA in urine (µg/L)		
	All Incomes‡ (n=1,179)	< Poverty Level (n=329)	≥ Poverty Level (n=755)
All Races/Ethnicities (n=1,179)	12.2	14.5	10.6
White non-Hispanic (n=499)	9.7	NA**	8.1
Black non-Hispanic (n=242)	15.1	14.8*	15.1
Mexican-American (n=227)	14.7	NA**	17.8
All Other Races/Ethnicities† (n=211)	NA**	23.0*	NA**

DATA: Centers for Disease Control and Prevention, National Center for Health Statistics and National Center for Environmental Health, National Health and Nutrition Examination Survey

NOTES:

- To reflect exposures to women who are pregnant or may become pregnant, the estimates are adjusted for the probability (by age and race/ethnicity) that a woman gives birth. The intent of this adjustment is to approximate the distribution of exposure to pregnant women. Results will therefore differ from a characterization of exposure to adult women without consideration of birth rates.
- The reported measurements of BPA in urine include both BPA itself and biologically inactive metabolites of BPA.
- BPA does not appear to accumulate in bodily tissues; thus the distribution of NHANES urinary BPA levels may overestimate high-end exposures as a result of collecting one-time urine samples rather than collecting urine for a longer time period.⁶⁻⁸

† The “All Other Races/Ethnicities” category includes all other races or ethnicities not specified, together with those individuals who report more than one race.

‡ Includes sampled individuals for whom income information is missing.

*The estimate should be interpreted with caution because the standard error of the estimate is relatively large: the relative standard error, RSE, is at least 30% but is less than 40% (RSE = standard error divided by the estimate), or the RSE may be underestimated.

** Not available. The estimate is not reported because it has large uncertainty: the relative standard error, RSE, is 40% or greater (RSE = standard error divided by the estimate), or the RSE cannot be reliably estimated.

Table B12: Bisphenol A in children ages 6 to 17 years: Median and 95th percentile concentrations in urine, 2003-2010

	Concentration of BPA in urine (µg/L)			
	2003-2004	2005-2006	2007-2008	2009-2010
Median	4.0	2.4	2.4	2.0
95th percentile	16.0	16.5	12.2	9.7

DATA: Centers for Disease Control and Prevention, National Center for Health Statistics and National Center for Environmental Health, National Health and Nutrition Examination Survey

NOTE: BPA does not appear to accumulate in bodily tissues; thus the distribution of NHANES urinary BPA levels may overestimate high-end exposures as a result of collecting one-time urine samples rather than collecting urine for a longer time period.⁶⁻⁸

Table B12a: Bisphenol A in children ages 6 to 17 years: Median concentrations in urine, by race/ethnicity and family income, 2007-2010

Race / Ethnicity	Median concentration of BPA in urine (µg/L)		
	All Incomes‡ (n=1,417)	< Poverty Level (n=426)	≥ Poverty Level (n=873)
All Races/Ethnicities (n=1,417)	2.2	2.4	2.1
White non-Hispanic (n=425)	2.1	2.7*	2.0
Black non-Hispanic (n=343)	2.8	3.1*	2.7
Mexican-American (n=379)	2.1	2.0	2.2
All Other Races/Ethnicities† (n=270)	1.8	1.9*	2.0

DATA: Centers for Disease Control and Prevention, National Center for Health Statistics and National Center for Environmental Health, National Health and Nutrition Examination Survey

NOTE: The reported measurements of BPA in urine include both BPA itself and biologically inactive metabolites of BPA.

† The “All Other Races/Ethnicities” category includes all other races or ethnicities not specified, together with those individuals who report more than one race.

‡ Includes sampled individuals for whom income information is missing.

*The estimate should be interpreted with caution because the standard error of the estimate is relatively large: the relative standard error, RSE, is at least 30% but is less than 40% (RSE = standard error divided by the estimate), or the RSE may be underestimated.

Table B12b: Bisphenol A in children ages 6 to 17 years: 95th percentile concentrations in urine, by race/ethnicity and family income, 2007-2010

Race / Ethnicity	95 th percentile concentration of BPA in urine (µg/L)		
	All Incomes‡ (n=1,417)	< Poverty Level (n=426)	≥ Poverty Level (n=873)
All Races/Ethnicities (n=1,417)	11.9	10.4	12.2
White non-Hispanic (n=425)	12.2	10.4*	12.2
Black non-Hispanic (n=343)	12.6	NA**	12.4
Mexican-American (n=379)	12.3	6.9	15.6*
All Other Races/Ethnicities† (n=270)	9.1	4.7*	9.1

DATA: Centers for Disease Control and Prevention, National Center for Health Statistics and National Center for Environmental Health, National Health and Nutrition Examination Survey

NOTES:

- The reported measurements of BPA in urine include both BPA itself and biologically inactive metabolites of BPA.

- BPA does not appear to accumulate in bodily tissues; thus the distribution of NHANES urinary BPA levels may overestimate high-end exposures as a result of collecting one-time urine samples rather than collecting urine for a longer time period.⁶⁻⁸

† The “All Other Races/Ethnicities” category includes all other races or ethnicities not specified, together with those individuals who report more than one race.

‡ Includes sampled individuals for whom income information is missing.

*The estimate should be interpreted with caution because the standard error of the estimate is relatively large: the relative standard error, RSE, is at least 30% but is less than 40% (RSE = standard error divided by the estimate), or the RSE may be underestimated.

** Not available. The estimate is not reported because it has large uncertainty: the relative standard error, RSE, is 40% or greater (RSE = standard error divided by the estimate), or the RSE cannot be reliably estimated.

Table B12c: Bisphenol A in children ages 6 to 17 years: Median and 95th percentile concentrations by age group, 2007-2010

	Concentration of BPA in urine (µg/L)			
	Ages 6 to 17 years	Ages 6 to 10 years	Ages 11 to 15 years	Ages 16 to 17 years
Median	2.2	2.1	2.2	2.2
95th percentile	11.9	10.4	12.2	12.2

DATA: Centers for Disease Control and Prevention, National Center for Health Statistics and National Center for Environmental Health, National Health and Nutrition Examination Survey

NOTES:

- The reported measurements of BPA in urine include both BPA itself and biologically inactive metabolites of BPA.
- BPA does not appear to accumulate in bodily tissues; thus the distribution of NHANES urinary BPA levels may overestimate high-end exposures as a result of collecting one-time urine samples rather than collecting urine for a longer time period.⁶⁻⁸

References

1. U.S. Environmental Protection Agency. 2010. *Fact Sheet on the Federal Register Notice for Stage 1 Disinfectants and Disinfection Byproducts Rule*. U.S. EPA, Office of Water. Retrieved January 10, 2011 from <http://water.epa.gov/lawsregs/rulesregs/sdwa/stage1/factsheet.cfm>.
2. U.S. Environmental Protection Agency. 2010. *Fact Sheet on the Interim Enhanced Surface Water Treatment Rule*. U.S. EPA, Office of Water. Retrieved January 10, 2011 from <http://water.epa.gov/lawsregs/rulesregs/sdwa/ieswtr/factsheet.cfm>.
3. U.S. Environmental Protection Agency. 2001. *Radionuclides Rule: A Quick Reference Guide*. Washington, DC: U.S. EPA, Office of Water. EPA 816-F-01-003. http://www.epa.gov/ogwdw/radionuclides/pdfs/qrg_radionuclides.pdf.
4. U.S. Environmental Protection Agency. 2009. *Technical Fact Sheet: Final Rule for Arsenic in Drinking Water*. U.S. EPA, Office of Water. Retrieved January 10, 2011 from http://water.epa.gov/lawsregs/rulesregs/sdwa/arsenic/regulations_techfactsheet.cfm.
5. Anderson, W.A., L. Castle, M.J. Scotter, R.C. Massey, and C. Springall. 2001. A biomarker approach to measuring human dietary exposure to certain phthalate diesters. *Food Additives and Contaminants* 18 (12):1068-74.
6. Mendez, W., E. Dederick, and J. Cohen. 2010. Drinking water contribution to aggregate perchlorate intake of reproductive-age women in the United States estimated by dietary intake simulation and analysis of urinary excretion data. *Journal of Exposure Science and Environmental Epidemiology* 20 (3):288-97.
7. Preau, J.L., Jr., L.Y. Wong, M.J. Silva, L.L. Needham, and A.M. Calafat. 2010. Variability over 1 week in the urinary concentrations of metabolites of diethyl phthalate and di(2-ethylhexyl) phthalate among eight adults: an observational study. *Environmental Health Perspectives* 118 (12):1748-54.
8. Völkel, W., T. Colnot, G.A. Csanady, J.G. Filser, and W. Dekant. 2002. Metabolism and kinetics of bisphenol a in humans at low doses following oral administration. *Chemical Research in Toxicology* 15 (10):1281-7.
9. Crump, K.S., and J.P. Gibbs. 2005. Benchmark calculations for perchlorate from three human cohorts. *Environmental Health Perspectives* 113 (8):1001-8.