



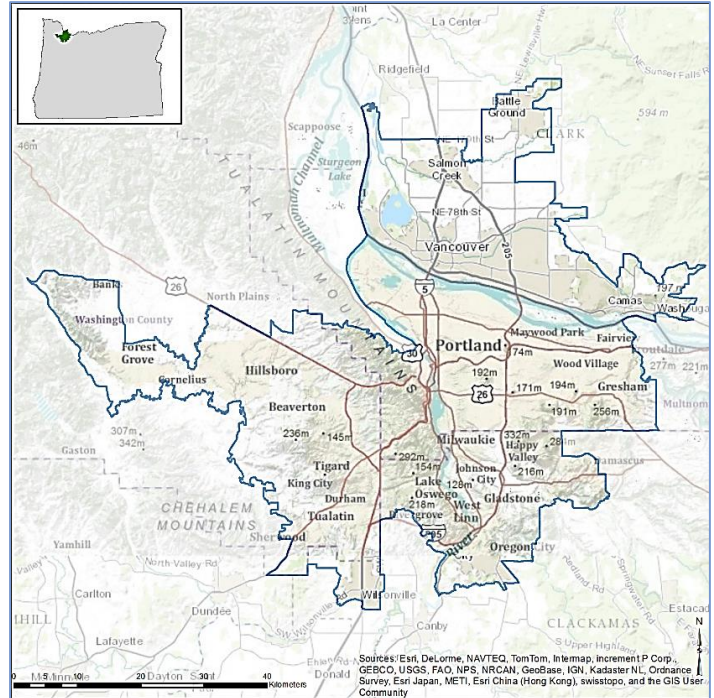
Portland, OR and surrounding area

Towns and cities rely on clean air, clean water, green space, and other natural amenities for economic sustainability and quality of life, yet their benefits are not always fully understood or considered in local decisions. EPA and its partners are producing EnviroAtlas to help communities better use environmental assets for public good.

EnviroAtlas includes an online interactive mapping application that anyone can use. The interactive map contains over 200 maps available for the U.S., as well as 100+ fine-scale maps for selected U.S. communities about existing and potential benefits from the local natural environment. The EnviroAtlas community component is based on 1-meter resolution land cover data. Information derived from these data is summarized by census block groups; more spatially explicit map layers are also provided. This fact sheet highlights some of the many community data layers available for the featured area of Portland, Oregon.

Background

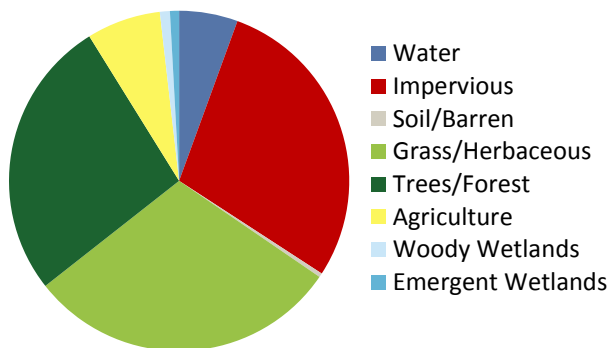
The Portland, Oregon area was chosen as an EnviroAtlas community because it offers multiple opportunities to leverage existing research and community engagement activities. It has also received high physical fitness and sustainability ratings that can be evaluated from a green infrastructure perspective. The EnviroAtlas boundary for the Portland area was determined using the 2010 Census definition of an Urban Area. In addition to Portland, it includes Vancouver, WA, as well as additional towns within Clackamas, Washington and Multnomah Counties (OR), and Clark County, WA. The area measures 1,762 square



kilometers, and encompasses 1,176 census block groups.

The Portland, Oregon area is in the Willamette Valley ecoregion. It has a warm, Mediterranean-type climate. The region was vegetated extensively with forests and prairies; however, the prairies have mostly been converted to agriculture. Portland hosts a wide variety of industries and company headquarters. Ics Blount Inc, Intel Corp, and Nike are among the largest employers. The demographics of the Portland community area indicate that the potential exists for income and other disparities in the distribution of environmental assets. EnviroAtlas includes demographic maps that can help screen for potential health and well-being disparities resulting from disproportionate

Percent Land Cover in Community Area



Portland Area Demographics
2010 Census

Total population	1,853,233
Under 13 years old	17.12%
Over 70 years of age	7.40%
Other than white/non-Hispanic	25.77%
Below twice the U.S. poverty level	28.19%

distribution of “green infrastructure.

Ecosystem Services Overview

In EnviroAtlas, the benefits humans receive from nature are grouped into seven categories that demonstrate the interconnectedness of these ecosystem services:

- Clean air
- Clean and plentiful water
- Natural hazard mitigation
- Climate stabilization
- Recreation, culture, and aesthetics
- Biodiversity conservation
- Food, fuel, and materials (data available only for communities with farm land)

Examples of some of the data included in EnviroAtlas are detailed below:

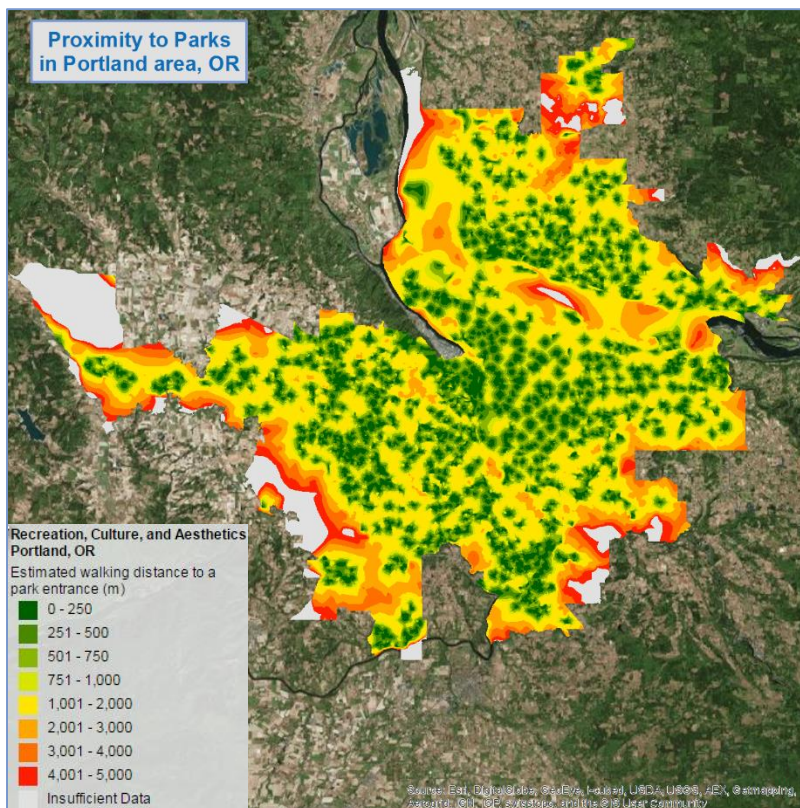
Access to Parks

Parks provide access to green space, encourage physical activity, and improve the livability and aesthetics of urban areas. Those who live closer to parks may be more likely to receive multiple benefits associated with this proximity.

- An estimated 47 percent of the Portland area population lives within easy walking distance (500 meters) of a park entrance (two darkest green regions in figure to the right).
- An estimated 7 percent of the Portland area does not have a park entrance within 5 kilometers (grey region in figure to the right).

Near-Road Environments

Studies indicate that the capacity of trees to filter air may reduce the health impacts of vehicular pollution. In



EnviroAtlas, you can find analyses of tree coverage near busy roads.

- An estimated 63 percent of the Portland area population lives within 300 meters of a busy roadway.
- 49 percent of the estimated Portland population lives within 300 meters of a roadway that has less than 25% tree buffer.

In addition to the Clean Air benefit category, near-road vegetation data layers can also be found under Biodiversity Conservation, and Recreation, Culture and Aesthetics in the interactive map’s table of contents.

EnviroAtlas Tools and Features

- Learn more about and download EnviroAtlas data: <https://www.epa.gov/enviroatlas/enviroatlas-data>
- Search our data layers and access their fact sheets: <https://www.epa.gov/enviroatlas/enviroatlas-dynamic-data-matrix>
- Explore data for the Portland community area in our interactive mapping application: <https://www.epa.gov/enviroatlas/enviroatlas-interactive-map>
- Use our Eco-Health Relationship Browser to explore ecosystems, the services they provide, and their benefits to human health and well-being: <https://www.epa.gov/enviroatlas/enviroatlas-eco-health-relationship-browser>
- Contact us with questions about EnviroAtlas: <https://www.epa.gov/enviroatlas/forms/contact-enviroatlas>

EnviroAtlas combines maps, graphs, and other analysis tools, fact sheets, and downloadable data into an easy-to-use, web-based educational and decision-support tool. EnviroAtlas helps users understand the connections between the benefits we derive from ecosystem services and the natural resources that provide them. For more information, please visit www.epa.gov/enviroatlas.