

Updates
December 2014

enviroatlas.epa.gov/enviroatlas

EnviroAtlas

Connecting ecosystems, people, and well-being


EnviroAtlas released publicly in May 2014

EnviroAtlas was released to the public in May 2014. Read the [EPA Press Release](#) and Former Deputy Administrator [Bob Perciasepe's blog](#) on EnviroAtlas. Prior to the public release, the beta-testing period allowed interested users to get early access to the site and provide feedback on their experiences. This user feedback, along with peer review comments, were incorporated into EnviroAtlas where feasible. Approximately 660 people from a wide range of disciplines signed up to beta-test EnviroAtlas.

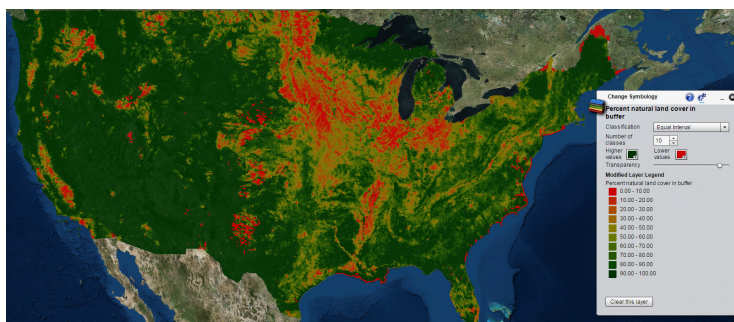
Since the public release, EnviroAtlas has received over 134,000 page views in the Interactive Map alone and is used in a range of public and private projects. Check out our EnviroAtlas promotional [video on YouTube](#).

What's new in EnviroAtlas?

As EnviroAtlas continues to grow and improve, additional functionality, content, and tools will be added. Here are some recent changes.

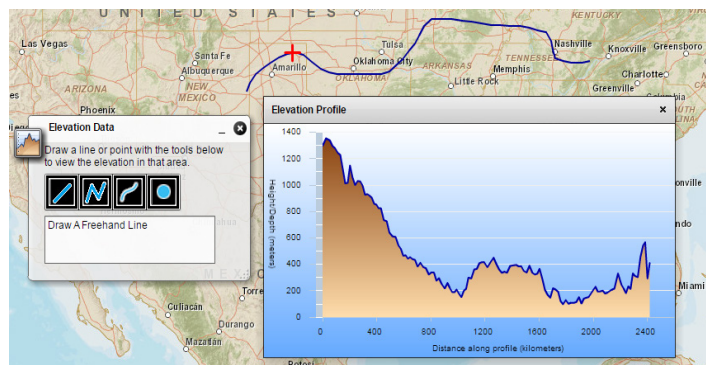
In the interactive map, users can now change how a selected national data layer looks by changing the classification method and breaks. Access the Change Symbology function via the  icon next to the map layer name.

There is also a new identify function in the interactive map. When a map is turned on, this function allows users to left click and select a specific HUC to get the associated value for that HUC. For example, selecting a HUC in the map below would show the value for the percent of natural land cover in stream buffers for that HUC.



Change symbology tool

Showing 10 equal interval breaks for Percent Natural Land Cover in Buffer with a red to dark green color scheme.



Elevation data

Using the elevation tool, users can draw a line across an area or select a specific point on the map to see the elevation profile for that area.

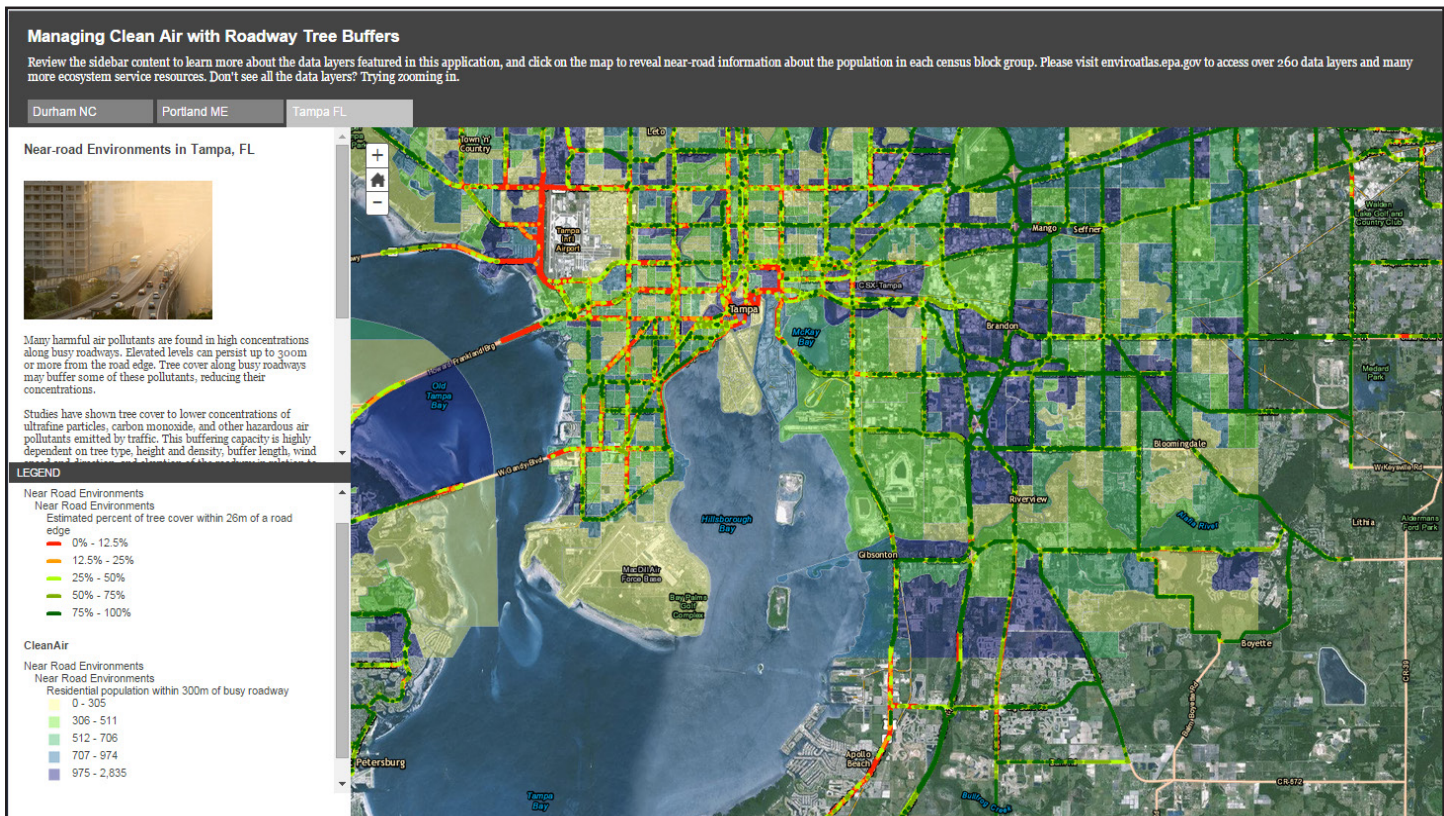
You can also add your own shapefile to the map, or import your own CSV/Excel/LatLong file into the map. Access both of these options from the Mapping Tools tab in the interactive map.

EnviroAtlas communities

One meter land cover data and roughly 90 indicators are being created for selected communities across the United States. Current communities in EnviroAtlas include the following:

- Durham, North Carolina
- Portland, Maine
- Tampa, Florida
- Pittsburgh, Pennsylvania
- Phoenix, Arizona
- Milwaukee, Wisconsin





EnviroAtlas Use Cases

Did you find our example use for [prioritizing tree planting](#) in Durham, NC helpful to understanding how you might use EnviroAtlas? We have updated that story map and now have a second example, [Managing Clean Air with Roadway Tree Buffers](#) (pictured above), that shows maps for Durham, NC; Portland, ME; and Tampa, FL. If you're using EnviroAtlas, or can think of potential uses, please be sure to [contact us](#) and let us know.

Coming soon Communities

Land cover and indicators for a number of new communities are being developed. The following four communities are currently being reviewed on our internal production site:

- Fresno, California
- Green Bay, Wisconsin
- New Bedford, Massachusetts
- Woodbine, Iowa

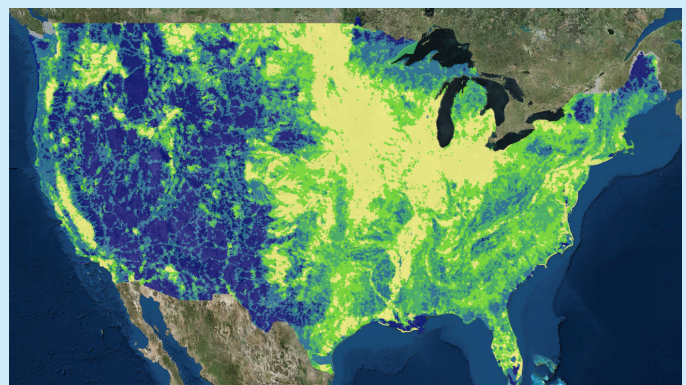
Upcoming Functionality and Tools

- Add a web service to the interactive map (i.e., bring in a map from elsewhere on the internet)
- Navigate HUC Catchments Tool - users will be able to select any 12-digit HUC and navigate up or downstream from that HUC, highlighting the full stream network.

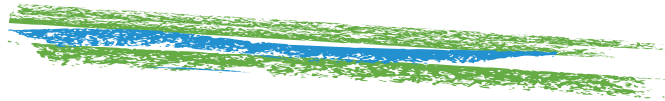


Additional Data

Data for EnviroAtlas are continually under development. In the coming months, EnviroAtlas will be updating the 12-digit HUC boundaries for the nation based on those used in the NHD Plus version 2 dataset.



EnviroAtlas is a collection of interactive tools and resources that provides data, research, and analysis on the relationships between nature, people, health, and the economy.



Look for us at the ACES 2014 conference in Washington, DC, December 8 - 12

If you didn't catch us at any of the recent meetings or events we attended this year (or even if you did!), look for us at the upcoming A Community on Ecosystem Services (ACES) Conference, in Washington, DC from December 8 - 12. Come visit us at the EPA booth in the exhibit hall, or attend your choice of multiple sessions that highlight various aspects of EnviroAtlas research.

EnviroAtlas will be introduced at the opening plenary as a major component of the newly released Ecoinformatics-based Open Resources and Machine Accessibility (EcoINFORMA) website, alongside USGS's BISON.

EcoINFORMA is designed to mobilize and integrate federal environmental data (www.data.gov/ecosystems/). On December 10, A Town Hall lunch meeting will be held to showcase the tools and data available via the EcoINFORMA site.

EnviroAtlas' Dr. Laura Jackson will be hosting a session on the linkages between ecosystem services and human health on the morning of Thursday, December 11. EnviroAtlas health related research and the Eco-Health Relationship Browser, a component of EnviroAtlas, will be highlighted in this session.

Additionally, EnviroAtlas Project Lead Anne Neale will be giving a talk on using EnviroAtlas for nationwide ecosystem services assessments in the afternoon on December 11.

A suite of EnviroAtlas posters will also be displayed at the poster session.

Shortly after the ACES conference, Anne Neale will travel to San Francisco, CA, to speak at the American Geophysical Union Fall Meeting, which is anticipating over 24,000 attendees. Her talk, titled *EnviroAtlas: A Spatially Explicit Tool Combining Climate Change Scenarios with Ecosystem Services Indicators*, will take place on December 17.



You may have seen us!

Researchers and staff members who work on the EnviroAtlas project have been busy since the public release spreading the word about the project. It is important to us that people know EnviroAtlas is out there as a resource, and is free and accessible to the public. You may have seen us at some of the following venues:

- North American Congress for Conservation Biology (NACCB) meeting in Missoula, Montana, July 13 - 16
- International City/County Management Association (ICMA) conference in Charlotte, NC Sep 14 - 16
- Eco-Districts Summit, Washington, DC Sep 24 - 26
- Organization of Fish and Wildlife Information Managers conference, Sep 29
- North Carolina American Planning Association conference, Oct 2
- National Science Teachers Association (NSTA) webinar *Exploration and Discovery through Maps: Teaching Science with Technology*, Nov 13. Access the archived presentation from learningcenter.nsta.org
- The American Public Health Association conference in New Orleans, LA, Nov 19

Help us spread the word!

Wonder where we will be next? Follow @EPAREsearch on Twitter to get information on upcoming EnviroAtlas presentations and the latest updates.

Enjoy using EnviroAtlas? Have questions for us that you think others might have, too? Tweet to us @EPAREsearch and use #EnviroAtlas.

