



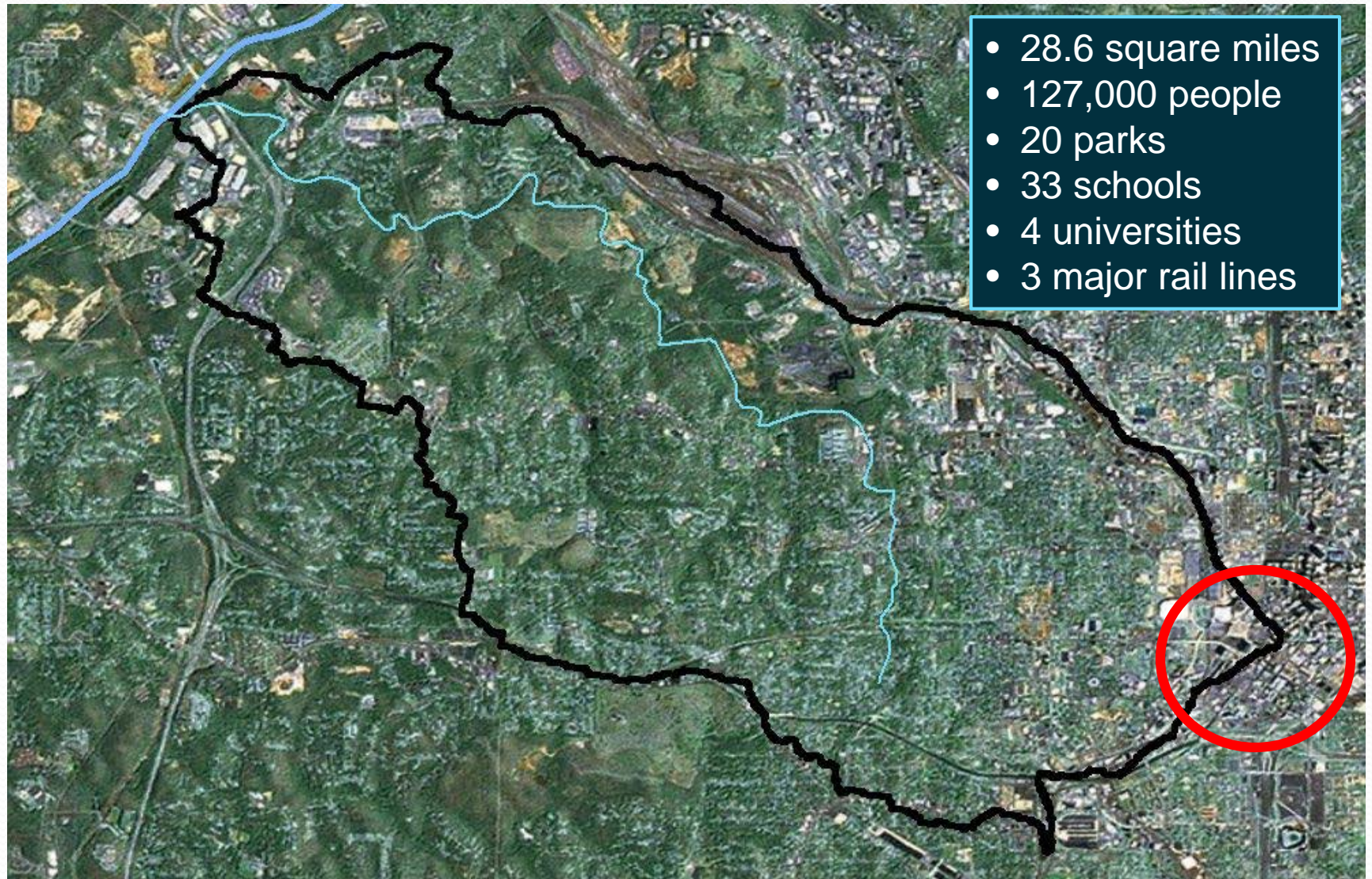
# The Proctor Creek Project, Federal Partnerships at Work in Atlanta

# Aerial View from Georgia Dome





# Watershed Vitals

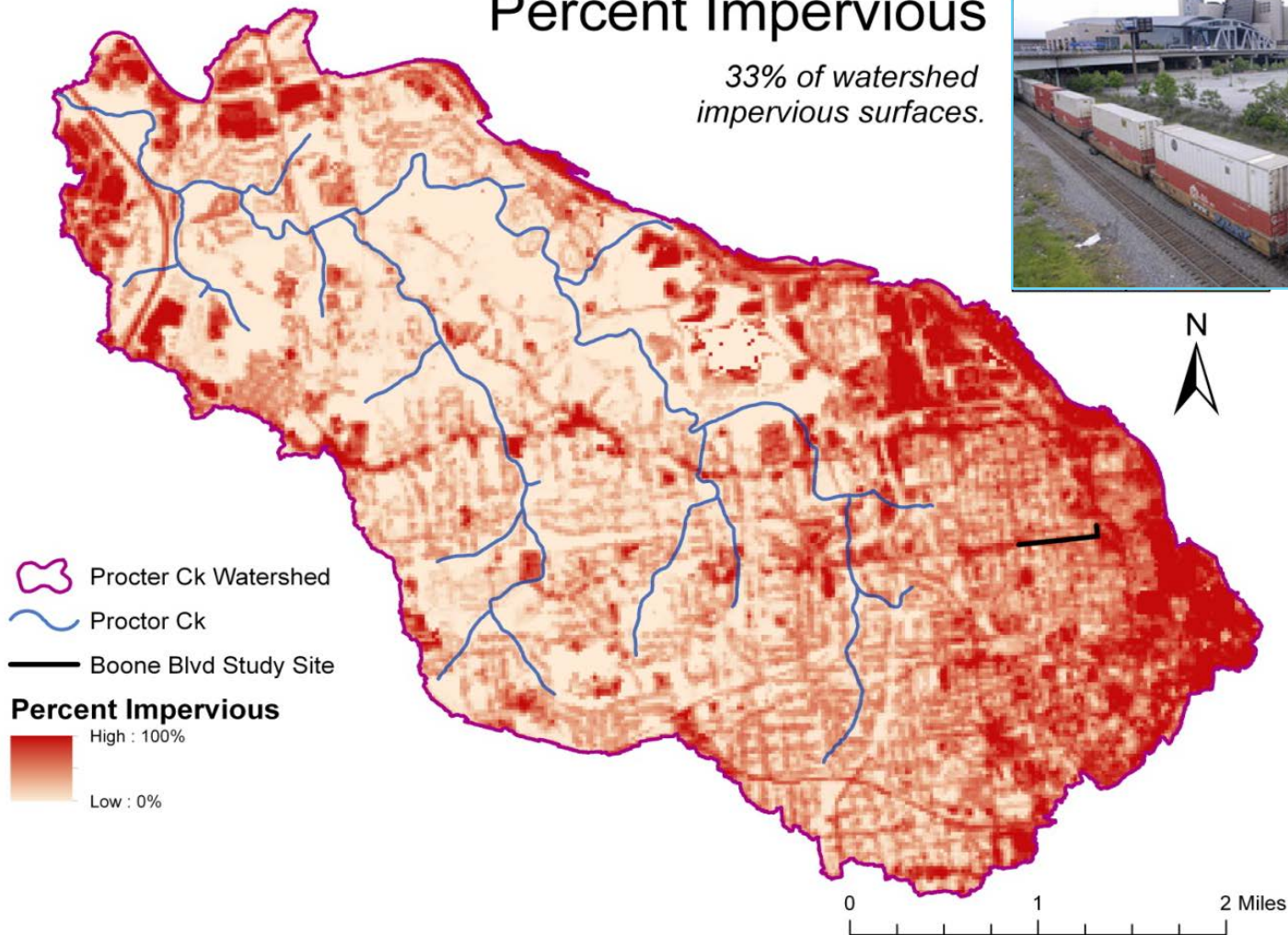
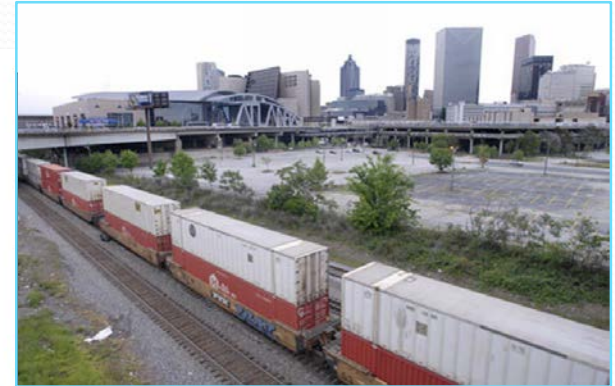




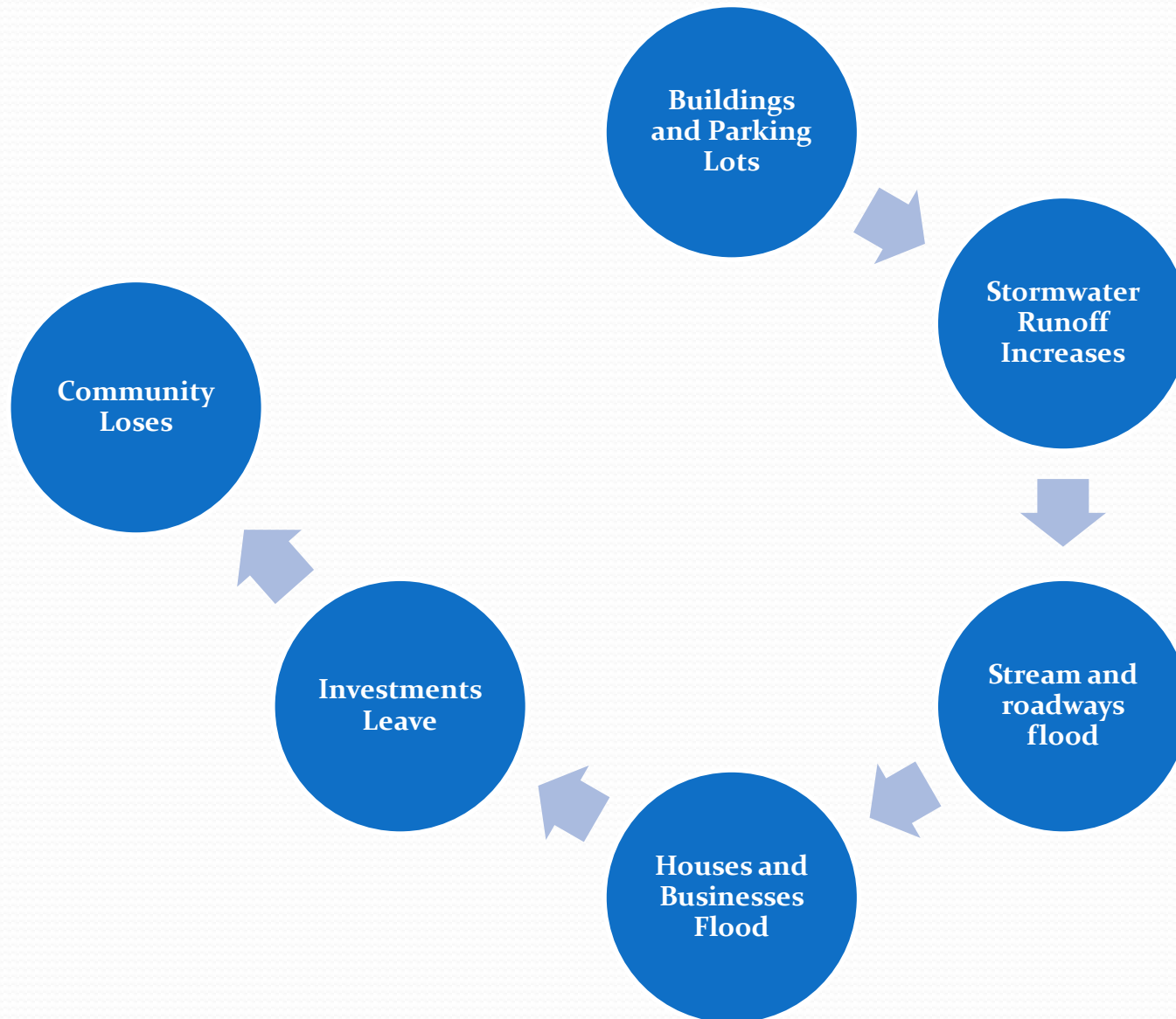
# Stormwater's Origin

## Percent Impervious

*33% of watershed  
impervious surfaces.*



# Stormwater Impacts Cascade



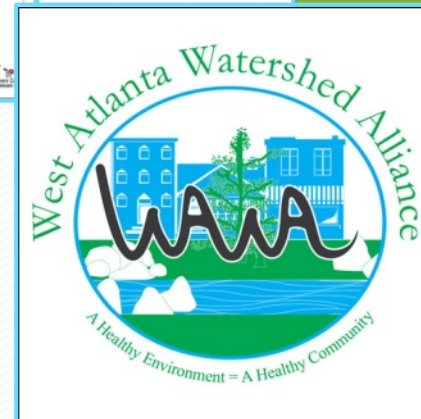
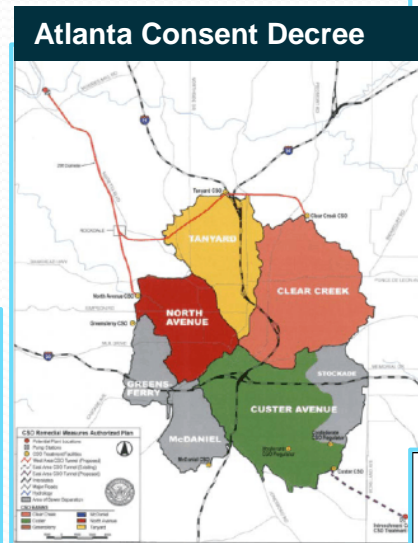
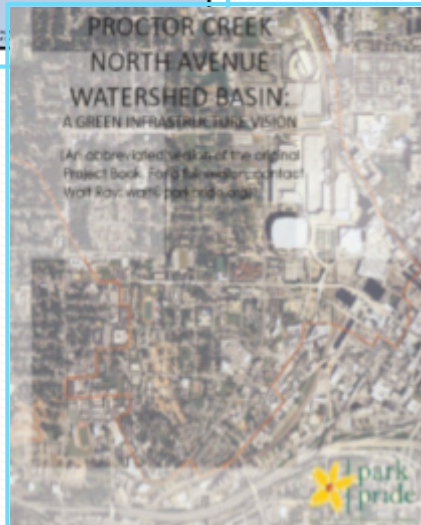
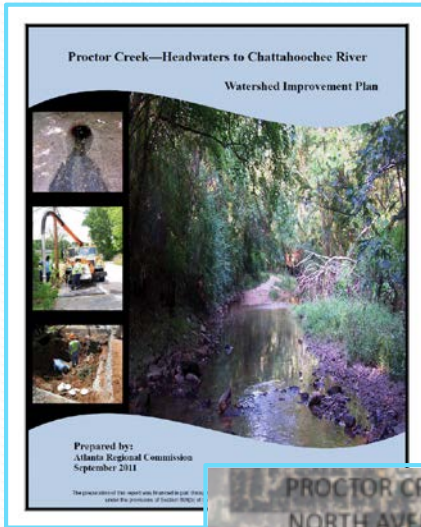


# Flooding Impacts



Trash, Erosion, Water Pollution  
Abandoned Buildings

# What Got Us Here?





# Why the Partnership for Sustainable Communities?

- Late 2012: EPA and our partner agencies identified Proctor Creek as a PSC project area because:
  - Many different interests and jurisdictions
  - Partnership could bring city, state, federal and community together
  - Offer variety of expertise and support
  - Opportunity to support “Livability Principles” in our own neighborhood



# Our Expected Outcomes

- Project is in early stage but expect to see:
  - Improved management of stormwater
  - Affordable housing in areas less prone to flooding
  - Improved economic opportunities for residents
  - Quality of life elevated as a result



# Local Collaborators

- Six universities
- Non-profit organizations—including the Chattahoochee Riverkeeper, Park Pride, Atlanta Beltline, West Atlanta Watershed Alliance, Trust for Public Land, Conservation Fund, several Neighborhood Associations and Planning Units
- Six City of Atlanta departments
- Georgia Department of Natural Resources





# Key Brownfields Projects

- Brownfields Assessment and RLF grants
- Green Infrastructure Technical Assistance—Evaluate flooding at local scale – reuse Brownfields for Green Infrastructure \$25K + additional EPA 319 \$ coming
- Health Impact Assessments, both small scale as a result of GI Tech Assistance; and at watershed scale to assess value of implementing environmental district - \$300k ORD Funds in FY 12/13
- Emory University assessing environmental health issues with stakeholder involvement - \$4M
- Army COE providing technical assistance



# Key Brownfields Projects

- Community engagement – support Urban Waters Federal Partnership, Brownfields, and Emory Stakeholder Group
- Community Gardens-GSU Collaboration and Atlanta BeltLine Health Advisory Group
- Water quality monitoring by residents supported through grants to Riverkeeper and WAWA
- Environmental and health education in schools by USFS and EPA
- Promoting better stormwater management for Multi-Modal Transportation Project and new Falcon Stadium
- Brownfields/Land Revitalization Environmental Green Infrastructure Opportunity District with Invest Atlanta



# *Partnership for Sustainable Communities*



**FEMA**



## **Proctor Creek Federal Partners:**

*Environmental Protection Agency  
Housing and Urban Development  
Federal Emergency Management Agency  
Army Corps of Engineers  
U.S. Department of Transportation  
Department of Labor  
Economic Development Administration  
US Forest Service  
Centers for Disease Control  
National Park Service*



# PSC Project Coordination

- Promote regular communication among all parties
- Ensure neighborhood residents and organizations are full-partners in the process
- PSC agencies are working with Community Organizations
- EPA facilitating federal agency discussions
- Stable points of contact enhance understanding and coordination





# Addressing PSC Livability Principles

- Create equitable, affordable housing
- Enhance economic competitiveness
- Support communities
- Coordinate and leverage federal support
- Value neighborhoods
- Provide more transportation choices