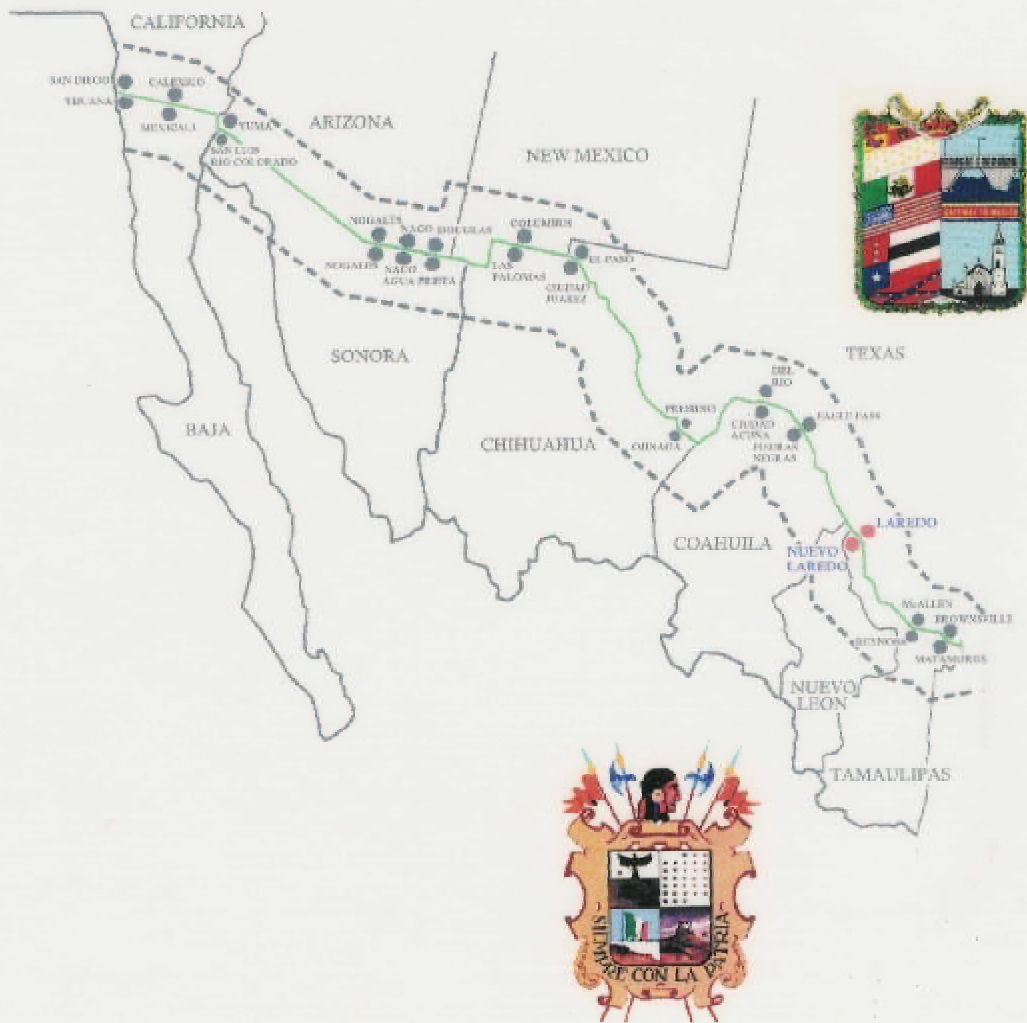


# CROSS BORDER CONTINGENCY PLAN

## U.S./MEXICO SISTER CITIES

### LAREDO/NUEVO LAREDO



**CROSS BORDER CONTINGENCY PLAN**

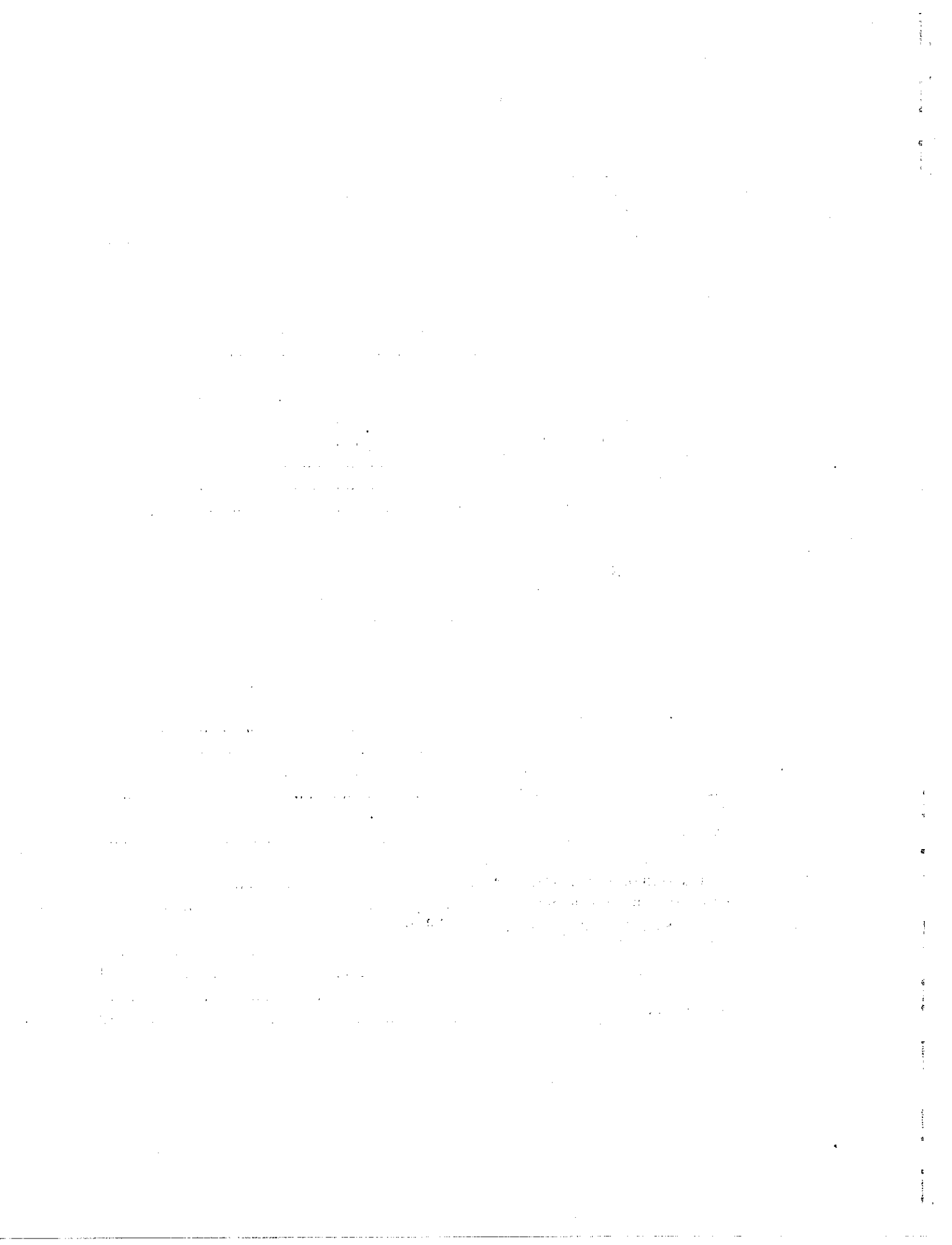
**U.S./MEXICO SISTER CITIES**

**LAREDO/NUEVO LAREDO**

**December 21, 1998**

## TABLE OF CONTENTS

SECTION	PAGE
FORWARD.....	i
UNDERSTANDING ON COOPERATION .....	ii
STATEMENT OF PRINCIPLES .....	iv
EMERGENCY NOTIFICATION NUMBERS .....	vi
1.0 INTRODUCTION .....	1
1.1 Laredo/Nuevo Laredo Plan Area .....	2
1.2 Authority .....	3
1.2.1 Statutes .....	3
1.2.2 Regulations .....	3
1.2.3 Binational Agreements.....	3
1.3 Other Applicable Contingency Plans.....	3
1.3.1 Local Contingency Plans .....	3
1.3.2 State Contingency Plans .....	4
1.3.3 Federal Contingency Plans .....	4
1.3.4 International Contingency Plans.....	4
2.0 CONCEPT OF OPERATIONS .....	6
2.1 Notification .....	6
2.2 Private Response Mechanisms.....	6
2.3 Local Response .....	6
2.4 State Response .....	6
2.5 Federal Response .....	7
3.0 INCIDENT RESPONSE OPERATIONS.....	8
3.1 Discovery and Verification .....	8
3.2 Preliminary Assessment and Initiation of Action .....	8
3.2.1 Preliminary Assessment.....	8
3.2.2 Initiation of Action.....	9
3.3 Containment.....	9
3.4 Documentation.....	9
3.5 Evacuation or Shelter-in-Place.....	10
3.6 Post-Incident Management .....	10
3.7 Response and Cleanup Funding Availability.....	11
3.7.1 State Funds.....	11
3.7.2 Federal Funds.....	11
3.8 Communications .....	11
3.9 Health and Safety .....	12



4.0	INTERNATIONAL NOTIFICATION AND/OR RESPONSE.....	13
4.1	Mutual Aid Response.....	13
	4.1.1 City of Laredo.....	13
	4.1.2 City of Nuevo Laredo.....	13
	4.1.3 Response Duties.....	15
4.2	Joint Response Team Response.....	15
	4.2.1 U.S. Environmental Protection Agency.....	15
	4.2.2 Regional Response Team.....	15
	4.2.3 Protección Civil.....	15
4.3	JRT Responsibilities.....	15
5.0	TRAINING AND EXERCISES.....	17
5.1	Training.....	17
5.2	Exercises.....	17

LIST OF FIGURES

- Figure 1 U.S./Mexico Sister Cities
- Figure 2 Laredo, Texas
- Figure 3 Nuevo Laredo, Tamaulipas

LIST OF APPENDICES

- Appendix A Emergency Response Assistance Directory
- Appendix B Proposed Customs and Immigration Response
- Appendix C Communications
- Appendix D Action by Law Enforcement Agencies
- Appendix E Standard Operating Procedures for Fire Agencies
- Appendix F Action by Social Services Departments
- Appendix G Cross Border EMS Response Sequence
- Appendix H Abbreviations and Acronyms
- Appendix I Definitions
- Appendix J References
- Appendix K Revision Log

Prepared for the Communities of Laredo, Texas and Nuevo Laredo, Tamaulipas through a Grant provided by U.S. EPA Region VI, Dallas, Texas, Fendol Chiles, Emergency Planning Coordinator.

This document may be reproduced for the benefit of emergency responders and planners. Ambiotec Environmental Consultants, Inc., Harlingen, Texas would like to especially thank the Mayor of Laredo Elizabeth G. Flores, Presidente C.P. Marcos Alejandro Garcia Mayor of Nuevo Laredo, Webb County LEPC, Luis Perez Garcia City of Laredo Emergency Response Department, Benjamin Galvan Gomez and Jose Vasquez Lopez Proteccion Civil Nuevo Laredo, and Florencio Pena, III City Manager of Laredo for their contributions to the Plan.

Ambiotec Environmental Consultants, Inc.  
1101 E. Harrison  
Harlingen, Texas 78550  
(956) 423-7807

David A. Hanawa, M.S.  
Principal

Kim Morgan  
Project Manager

# CROSS BORDER CONTINGENCY PLAN

## STANDARD OPERATING PROCEDURES FOR THE REGIONAL MUNICIPALITY OF LAREDO, TEXAS, UNITED STATES OF AMERICA AND NUEVO LAREDO, TAMAULIPAS, MEXICO

### FORWARD

Whereas the Federal governments of the United States of America and Mexico have recognized that it is advantageous for each to share resources and manpower in times of national disasters, so too the municipalities of the City of Laredo, State of Texas, and the City of Nuevo Laredo, State of Tamaulipas, recognize their need to cooperate with each other in times of local disasters.

In the event of a disaster of serious proportions which may effect a great deal of coordination and cooperation, a plan between the two cities to meet emergencies and disasters will assure, when possible by either city, a full and effective utilization of resources and manpower essential to the safety, care and welfare of all peoples, environment and property within the two Federal boundaries affected.

These Standard Operating Procedures provide an outline of the immediate action to be taken by elected and appointed officials. These procedures also list the organizations which would need to be involved dependent on the extent and nature of the disaster.

When a disaster has been declared, these Standard Operating Procedures will not supersede any local, state, or Federal plan in effect, and authority of any local, state or regional plans still lies with the respective municipalities.

This Cross Border Contingency Plan will become an annex to existing city, state, regional, and Federal plans. An emergency under this plan will be declared if the severity and geography of the event warrant outside support services.

All regional, county, and local municipal elected and appointed officials with emergency responsibilities should be fully knowledgeable with the content of this document and be prepared to fulfill their responsibilities when requested and when capable.

## CROSS BORDER CONTINGENCY PLAN

### UNDERSTANDING ON COOPERATION BETWEEN THE CITIES OF LAREDO, TEXAS AND NUEVO LAREDO, TAMAULIPAS IN THE CASE OF AN ACCIDENTAL RELEASE OF HAZARDOUS MATERIALS

The Cities of Laredo and Nuevo Laredo have agreed to provide mutual cooperation to effectively respond to threats to the public health and safety of the communities due to accidental releases of hazardous materials into the environment. This understanding is to reinforce the cooperation between the cities to be able to respond more efficiently to these releases, the following statement of principles is intended to serve as a guide to civil emergency authorities in both countries.

1. The agencies of both municipalities charged with emergency responsibilities will seek to ensure that in areas of common concern, plans of the two municipalities for the emergency use of manpower, material resources, supplies, systems, and services shall, where feasible and practicable, be compatible. To this end, a binational exercise will be conducted at least every two years to evaluate the coordination of the Sister Cities' emergency plans.
2. The city providing the assistance will supervise their own necessary personnel and assigned equipment in an ordinary circumstance. The group receiving aid will have authorized persons to provide general directions related to the work. The Potentially Responsible Party (PRP) for the spill receiving the assistance will be responsible for providing the necessary materials, food, shelter, temporary housing, gasoline and lubricants for the equipment and any other such items needed to respond adequately, at the job site for the personnel lending their services.
3. It is mutually understood that this understanding does not relieve any of the mentioned parties of the obligation necessary for providing protection against fires, according to their respective jurisdictions, being in agreement to use reasonable diligence in maintaining fire equipment in adequate condition according to industry standards. The decision to render aid to the Sister City rests ultimately with the Fire Chief in Laredo and the Fire Chief and Protección Civil in Nuevo Laredo. Each Sister City may decide not to render aid, depending on each incident, if their resources are not capable of meeting obligations in their own jurisdiction.
4. With the exception of the ruling to carry out the assistance mentioned above, no other party in this understanding will be required to pay compensation to the other group, for services rendered. The mutual advantage and protection given by this understanding is of mutual consideration.

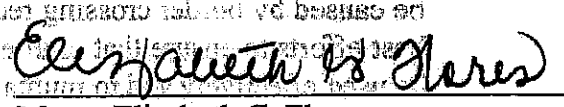


5. Each party agrees to the compensation, thereby holding each other harmless from acts which may arise resulting in any act or omission of any party's fire personnel during such time that said personnel are serving in the jurisdiction of any party for assistance pursuant to the terms of this understanding.
6. The Understanding shall not be construed as an agreement for the benefit of any third party, taking effect at the time of execution and will continue until rescinded.
7. Every two years the parties will examine the present understanding in light of its application in order to decide if it must be modified. Nevertheless, the parties may examine this matter and propose changes to the other parties by personal service or registered mail. Changes will be considered effective starting on the date of the amendments signing by all parties.
8. Any party to this Understanding may withdraw at any time giving thirty days prior written notice to all the parties. On the thirty-first day after the notice, such withdrawal will become effective.
9. Any party may change its service address by five days written notice to each of the other parties. On the sixth day after the notice, such change of address is effective.
10. Notice of withdrawal and change of address shall be served by personal service or by the respective party's Postal Service certified mail addressed to:

Presidente Municipal, C.P. Marcos Alejandro Garcia ,  
 Palacio Municipal  
 Nuevo Laredo, Tamaulipas, México  
 Mayor Elizabeth G. Flores,  
 PO Box 579,  
 City of Laredo, Laredo, Texas, USA, 78042

In witness, whereof, this Understanding has been executed on the 21<sup>st</sup> day of December, 1998.

  
 Presidente C.P. Marcos Alejandro Garcia  
 Municipal de Nuevo Laredo

  
 Mayor Elizabeth G. Flores  
 City of Laredo

## CROSS BORDER CONTINGENCY PLAN

### STATEMENT OF PRINCIPLES CONCERNING UNITED STATES - MEXICO COOPERATION ON CIVIL EMERGENCY PLANNING

1. The following Statement of Principles is intended to serve as a guide to civil emergency authorities in both countries.
2. Nothing in this understanding shall derogate or diminish the application of Mexican law in Mexico or United States law in the United States. However, the authorities of either country may request the assistance of the other country in seeking appropriate alleviation if the normal application of law in either country might lead to delay or difficulty in the rapid execution of necessary civil emergency measures.
3. The agencies of both governments charged with civil emergency responsibilities will seek to ensure that in areas of common concern, plans of the two governments for the emergency use of manpower, material resources, supplies, systems and services shall, where feasible and practicable, be compatible. The decision to render aid to the Sister City rests ultimately with the Fire Chief of Laredo and the Fire Chief and Proteccion Civil of Nuevo Laredo. Each Sister City may decide not to render aid, depending on each incident, if their resources are not capable of meeting obligations in their own jurisdiction.
4. Each government will use its best efforts to facilitate the movement of evacuees, refugees, civil emergency personnel, equipment or other resources into its territory or across its territory from one area of the country to another when such movement is desired to facilitate civil emergency operations in either country. To this end:
  - a. To the maximum extent permitted by law and regulation, the Government of the United States and the Government of Mexico, during a period of an emergency, use their best efforts to reduce to a minimum any delays which might otherwise be caused by border crossing requirements. Both governments will also use their best efforts to ensure that civil emergency equipment, facilities, and supplies may be used effectively and to mutual advantage in joint efforts, tests, preparations and exercises.
  - b. The civil emergency agencies of both governments will consult together to identify and remove any serious potential impediments to cross border assistance, emergency operations and the cross border flow of commodities for emergency response. Unresolved problems will be reported to the Joint Response Team for appropriate action.

5. For the purpose of emergency relief, health and welfare services, each government will use its best efforts to ensure that those citizens or residents of the other country on its territory are treated in a manner no less favorable than its own citizens.
6. Each government will use its discretionary powers as far as possible to avoid a levy of any national, tax on the services, equipment and supplies of the other country when the latter are engaged in civil emergency activities on the territory of the other, and will use their best efforts to encourage state, provincial, and local authorities to do likewise.
7. When transportation, communication and related facilities and equipment which are subject to the control of one government are made available for emergency use to the other government, the charges to that government shall not exceed those paid by similar agencies of the government making these resources available. To this end, mutually acceptable arrangements shall be worked out as necessary by the two governments.
8. In its emergency planning, each government will include provisions for adequate security and care for the personnel, equipment, and resources of the other country entering its territory by mutual agreement in pursuance of authorized civil emergency activities. Such provisions will also ensure access to supplies necessary for their return.
9. Transportation and other equipment originating in one country at the onset of an emergency may be temporarily employed under mutually agreed terms by the appropriate authority of the country in which the equipment is located.
10. Perishable or other readily consumable supplies located in one country at the time of an emergency but owned by parties in the other country may be disposed of under mutually agreed terms by the appropriate civil emergency authorities of the two countries.
11. Each government will call to the attention of its state, provincial, local or other authorities in areas adjacent to the international border the desirability of achieving compatibility between civil emergency planning in the United States and Mexico. For the purpose of achieving the most effective civil emergency planning cooperation possible between the United States and Mexico, each government will, in a manner consistent with national plans and policies, also encourage and facilitate cooperative emergency arrangements between adjacent jurisdictions on matters falling within the competence of such jurisdictions.

## EMERGENCY NOTIFICATION

Any substantial threat to the public health, safety, or the environment due to, or threat of, an accidental spill or release of an oil or hazardous material into the air, surface water, groundwater, or onto the ground, should be reported to:

### *UNITED STATES OF AMERICA*

#### **First Response**

911

#### **National Response Center**

01-800-424-8802 (from U.S.)

95-202-426-2675 (from Mexico)

#### **U.S. EPA Region VI Spill Phone**

01-214-665-2222 (from U.S.)

95-214-665-2222 (from Mexico)

#### **TNRCC Emergency Spill Reporting Line**

01-210-463-7727 (from U.S.)

95-210-463-7727 (from Mexico)

### *REPUBLIC OF MEXICO*

#### **First Response**

06

#### **National Coordinating Center for Civil Protection Agency**

91-5-70-5-52-70 (from Mexico)

011-52-5-70-5-52-70 (from U.S.)

#### **Communications Center, Civil Protection Agency**

91-800-7-02-26 (from Mexico)

011-52-7-02-26 (from U.S.)

#### **Federal Prosecutor for Environmental Protection – PROFEPA**

91-800-29-3-12-40 (from Mexico)

011-52-29-3-12-40 (from U.S.)

## 1.0 INTRODUCTION

In January 1988, the United States of America and the United Mexican States signed the Joint United States of America - United Mexican States Contingency Plan for Accidental Releases of Hazardous Substances along the Border. The Joint Contingency Plan (JCP) provides a framework for cooperation between Mexico and the United States in response to an accidental chemical release incident that may pose a significant threat to both countries, or that affects one country to such an extent that assistance is necessary. As a part of the preparedness and response component of the Joint Contingency Plan, a Sister Cities program was established, which pairs 28 cities along opposite sides of the U.S./Mexico border from California through Texas. This program calls for the preparation of Sister City Hazardous Materials Incident Contingency Plans for each of the 14 pairs of cities.

This document is a first step in the preparation of a joint contingency plan for the Laredo, Texas/Nuevo Laredo, Tamaulipas area. It represents a summary of the hazardous materials notification and response protocols in place for Laredo, Texas, Nuevo Laredo, Tamaulipas, and other jurisdictions, as promulgated by local plans. This plan specifically addresses the requirement under the Joint Contingency Plan to prepare Sister Cities plans. It is not intended to replace or supplant any other plans in effect in the region, but is designed to aid in a binational response to a hazardous materials incident that may effect the border.

This plan at no time usurps existing Federal, state, county, regional, or municipal plans within the jurisdictional boundary addressed by this plan.

If the region affected declares an emergency under this plan to be in effect, the municipality affected will, subject to its own disaster plan, inform state and Federal officials, as identified in their respective plans. The Cross Border Contingency Plan is activated for the short term only and it will provide specifics for the coordination of resources and equipment.

The initial and prime responsibility for providing immediate assistance rests with the city, county or regional government affected. It is at this level that services such as fire, police, health, and social services, public works, and public utilities are located. An emergency under the Cross Border Contingency Plan may be declared when (1) a city, county or region so requests the head of government, (2) the emergency, due to geography, may dictate evacuation into a neighboring region, (3) that the municipality, county or region affected may request mutual aid support, supplying manpower, resources, social services, fire, public works, emergency health services, and other specialized expertise as deemed necessary by the affected municipality, or (4) the emergency may affect a neighboring municipality, county, or region.

The Plan promotes timely and effective coordination and response between private sectors (industry, other potentially responsible parties and citizens) and public sectors (local, state, and Federal governments). The primary objective of the plan is to develop communication capabilities and encourage coordination of independent response resources acting within local

jurisdictions. The plan aids understanding of regional capabilities and resources and provides a background for planning coordination with state and local officials.

Secondary objectives include the development of notification systems between response organizations in the different countries, and developing international mutual aid agreements. The secondary objectives are being addressed through ongoing cooperative efforts between local planners in Laredo, Texas and Nuevo Laredo, Tamaulipas, United States Environmental Protection Agency (U.S. EPA Region VI), the Mexican Civil Protection Agency (Protección Civil), and the Secretaría de Gobernación.

## **1.1 Laredo, Texas - Nuevo Laredo, Tamaulipas Plan Area**

This plan covers the U.S./Mexico Sister City pair of Laredo, Texas and Nuevo Laredo, Tamaulipas (Figure 1). The Laredo/Nuevo Laredo Sister Cities are one of the primary ports of entry into and from Mexico and is located in South Texas at latitude 27.32°N and longitude 99.28°W (Figure 2). By highway, the Sister Cities are approximately 152 miles southeast of San Antonio, Texas and 150 miles northeast of Monterrey, Mexico.

Laredo is situated at an altitude of 470 to 500 feet above sea level with a rolling terrain with a population estimate of 183,000 and a growth rate of 8-12% per year. Nuevo Laredo is located across the Rio Grande River, southwest of Laredo (Figure 3) with a population estimate of 450,000-500,000. The elevation and topography of Nuevo Laredo are comparable. The Rio Grande River bisecting the two cities is an integral component of the physical environment.

The range of temperature is from 68 in the winter to 100 in summer with an average rainfall of 20 inches. Prevailing winds are from the southeast at 15 mph.

Laredo/Nuevo Laredo continues to be the busiest border cargo crossing point with an economy based on merchandise flow and storage.

## **1.2 Authority**

This plan was developed in accordance with the following Federal statutes and agreements for both countries.

### **1.2.1 Statutes**

"Comprehensive Environmental Response, Compensation, and Liability Act (CERCLA) of 1980," PL 96-510; and

"Emergency Planning and Community Right-to-Know Act (EPRCA) of 1986," PL 99-499 (Title III of "Superfund Amendments and Reauthorization Act (SARA) of 1986," PL 99-499).

## 1.2.2 Regulations

40 Code of Federal Regulations, Part 300, "National Oil and Hazardous Substances Pollution Contingency Plan," (Revised March 8, 1990); and

29 Code of Federal Regulations, Part 1910.120, "Hazardous Waste Operations and Emergency Response," (Revised July 1, 1989).

## 1.2.3 Bi-national Agreements

- Agreement Between the United States of America and the United Mexican States on Cooperation for the Protection and Improvement of the Environment in the Border Area (August 14, 1983); and
- Annex II to the Agreement (July 18, 1985).

## 1.3 Other Applicable Contingency Plans

Sections of the plans described below were adapted for use in various components of this plan.

### 1.3.1 Local Contingency Plans

- Laredo/Webb County Local Emergency Planning Committee (LEPC) Emergency Management Plan.

This annex creates an umbrella to protect the health, safety and property of the public from hazardous material incidents for Laredo. The plan identifies mitigation, preparedness, response, and recovery activities relevant to hazardous material response.

- Nueyo Laredo Emergency Response Plan.

This is Annex III to the State of Tamaulipas local emergency response plan for sister cities. The plan identifies mitigation, preparedness, response, and recovery activities relevant to hazardous material response.

### 1.3.2 State Contingency Plans

- State of Texas DEM 10 Plan

The state response plan, developed by the Texas Department of Public Safety (DPS) Division of Emergency Management (DEM), describes the procedures, responsibilities and methodology by which the State of Texas will respond to hazardous materials incidents. This plan provides for the support of many state agencies in large-scale hazardous materials incidents by establishing clear methods for interacting with local government.

- State of Tamaulipas Emergency Response Plan

Protección Civil of the State of Tamaulipas developed and implemented a state contingency plan in 1994. This plan is based on the Guía Técnica Para Implementación Del Plan Municipal De Contingencias. This guide which is printed by the National civil protection agency provides a guideline by which the state and municipal civil protection agencies will prepare their plans.

### 1.3.3 Federal Contingency Plans

- National Contingency Plan (9/5/94)

The National Response Team (NRT) developed the National Contingency Plan (NCP) for responding to releases or spills involving oil or hazardous material throughout the United States.

- National System For Civil Protection Plan (1990)

Gobernación developed the National System for Civil Protection for responding to all disasters including releases or spills involving oil or hazardous material throughout the United Mexican States.

- U.S. EPA Region VI - Regional Contingency Plan

The U.S. EPA Regional Response Team (RRT), Region VI, is currently revising a contingency plan which outlines procedures in the event of a release or spill occurring in their region which includes the States of Texas, New Mexico, Arkansas, Louisiana, and Oklahoma.

### 1.3.4 International Contingency Plans

- Joint United States of America - United Mexican States Contingency Plan for Accidental Releases of Hazardous Substances along the Border (January, 1988).

The Joint Response Team (JRT) has developed a contingency plan to respond to spills requiring international coordination between the United States and Mexico.

- Manual for Standard Operating Procedures Based Upon a Cooperative Agreement Between the Mexican Republic and the United States of America to Coordinate Our Joint Responses in the Event of Spills of Petroleum Hydrocarbons and Other Noxious Substances in the Marine Environment (1994).

The U.S. Coast Guard, U.S. Department of Transportation and the Mexican Navy have developed a Gulf Coast Response Plan for hydrocarbon and other noxious substances spills in the marine environment requiring international coordination between the United States and Mexico.



## 2.0 CONCEPT OF OPERATIONS

This concept of operations provides an integrated and coordinated joint binational response effort to supplement the local emergency response plans following the release of hazardous materials in the geographical area covered under this plan.

### 2.1 Notification

Any release or substantial threat of a release of a hazardous material affecting or likely to affect another party shall be reported to that party without delay. Appendix A is an emergency response assistance directory that provides contact information.

### 2.2 Private Response Mechanisms

As Potentially Responsible Parties (PRPs), owners or operators of fixed facilities and transportation facilities, including truck and rail lines and pipelines, must comply with all local, state, and Federal hazardous material planning and reporting requirements.

### 2.3 Local Response

In Laredo, the City of Laredo Fire Department Fire Chief will assume the lead role as Incident Commander (IC). If the incident is beyond the control and/or capabilities of the Laredo Fire Department, or the incident might impact the border with the United Mexican States, the Incident Commander will request activation of the City Emergency Operations Center (EOC). This request will initiate a binational notification response for mutual aid from Nuevo Laredo.

If the incident is beyond the capabilities of both cities, the Fire Chief may request for the State of Texas to initiate a Joint Response Team response.

In Nuevo Laredo, the system of response will follow established response Standard Operating Procedures (SOPs). This response will be similar to the response in Laredo. If the Incident Commander feels that the incident will exhaust the resources available, or that the incident might impact the border, a request will be initiated to the Laredo Fire Chief using a predetermined code to be shared only by the Laredo Fire Chief and Fire Chief and Director of Proteccion Civil to request a binational response. As with the Laredo response, the binational response will involve requesting mutual aid from Laredo.

If the incident is beyond the capabilities of both cities then the Fire Chief of Nuevo Laredo and Proteccion Civil may file a petition with Proteccion Civil to initiate a Joint Response Team response.

### 2.4 State Response

The State of Texas can provide assistance for hazardous materials incidents to Laredo, Webb County, if the combined PRP and local capabilities or resources prove to be insufficient or inadequate. The State will appoint a State On-Scene-Coordinator (SOSC) who will assist the Incident Commander by providing and overseeing needed State resources.

The State of Tamaulipas can provide assistance through the State's Civil Protection System Coordinator for hazardous materials incidents to Nuevo Laredo, if the combined Potentially Responsible Parties and local capabilities or resources prove to be insufficient or inadequate. The State will appoint a State On-Scene-Coordinator (SOSC) who will assist the Incident Commander by providing and overseeing needed State resources.

## 2.5 Federal Response

The U.S. Federal government can provide assistance for hazardous materials incidents if combined local and state capabilities or resources prove insufficient or inadequate. Once the National Response Center (NRC) has been notified of a release, they alert the Federal On-Scene-Coordinator (FOSC), who may activate the Regional Response Team (RRT) or the National Response Team (NRT), depending on the severity of the incident. For incidents occurring in Laredo, the Federal On Scene Coordinator will be from the U.S. EPA Region VI, headquartered in Dallas, Texas.

Normally, the U.S. EPA contributes to the response by working with the local, state, tribal and Federal agencies and citizens to assure that the information needed to maximize the effectiveness of the response effort is easily accessible. If there is a spill where the Potentially Responsible Party is not identified, does not respond to contain or clean up the material, or does an inadequate job responding, Federal responsibilities outlined in the National Contingency Plan include assisting local responders in the response or, in some circumstances, taking over the response.

Federal agreements between the U.S. and Mexico require that each country notify the other of hazardous materials incidents if there is a release or substantial threat of release which may impact both sides of the border.

If it appears that the incident will reach a level at which local and state resources will be insufficient to bring the event to a successful conclusion, the Federal On Scene Coordinator in conjunction with the Regional Response Team, will initiate a Joint Response Team response, and implement the Joint Contingency Plan.

Procedures for following the Joint Contingency Plan, and initiating a U.S./Mexico Joint Response Team operation are detailed in Section 4.

The Mexico Federal Government can provide assistance through the National Civil Protection System for hazardous materials incidents to Nuevo Laredo, if the combined Potentially Responsible Parties and local capabilities or resources prove to be insufficient or inadequate. The State will appoint a State On-Scene-Coordinator (SOSC) who will assist the Incident Coordinator by providing and overseeing needed State resources.

### 3.0 INCIDENT RESPONSE OPERATIONS

This plan employs the phases of operational response to an incident as outlined in the Joint Contingency Plan.

#### 3.1 Discovery and Notification

Upon the discovery of a hazardous materials release or threatened release within the City of Laredo, a notification is made to the appropriate emergency organization. The initial notification will involve calling 911 to notify the Laredo Fire Department. The agency receiving the initial contact will follow the Laredo Fire Department's Standard Operating Procedure (SOP) for the notification of all other appropriate agencies. The Potentially Responsible Party is also required to notify appropriate Federal and state agencies by contacting the National Response Center and the Texas Natural Resource Conservation Commission (TNRCC) Spill Response Center. These agencies will also notify appropriate local, state, and Federal agencies.

For Nuevo Laredo, the Potentially Responsible Party will follow the normal reporting procedures for the City of Nuevo Laredo which includes calling 06, Protección Civil and Departamento de Bomberos.

The authority of local government, municipalities, and counties for spill response is similar to authority for other emergency responses for protection of public health and safety, such as response to fire, flood, and civil disturbance. Federal and state laws impose notification requirements to ensure a coordinated response.

Agreements between the Governments of the United States and Mexico require that the countries notify each other in the event of a release or substantial threat of a release of a hazardous substance, pollutant, or contaminant affecting, or likely to affect the other country (Joint Contingency Plan Section 202.1).

#### 3.2 Preliminary Assessment and Initiation of Action

The first official on the scene will assume the role of Incident Commander. This duty will be relinquished to the appropriate official upon their arrival at the incident. All agencies report to the established Incident Commander for all response and recovery operations. Each agency will provide its own special equipment and reference data, and will function within its field of expertise. If an incident exceeds the resources of the local or county agencies, the appropriate state agency may assume Incident Commander duty and coordinate the response and resources of the state agencies. This function may be transferred to the Federal On Scene Coordinator, if a Federal response is activated.

### **3.2.1 Preliminary Assessment**

The first response unit to arrive at the incident will determine whether a potentially hazardous material was released. The first official on the scene assumes the role of Incident Commander until the designated official arrives to coordinate the response.

### **3.2.2 Initiation of Action**

Upon arrival on-scene, the predesignated Incident Commander will implement the following actions:

- Relieve the first official on-site;
- Establish an Incident Command Post (ICP) and implement the Incident Command System (ICS); and
- If the incident threatens the border or the City of Nuevo Laredo or Laredo, the Incident Commander will insure the appropriate notifications are made to the Joint Response Team, and if mutual aid will be required, insure that the proper notifications are made to implement a binational response.

### **3.3 Containment**

The Incident Commander will implement appropriate measures to contain, restrict, reduce or eliminate the release or threat of release of hazardous materials at the incident, as well as downstream or downwind from the site. This includes defensive action to prevent, minimize, or mitigate an incident to protect public health and the environment.

### **3.4 Documentation and Cost Recovery**

All actions taken during hazardous materials incidents will be carefully documented so that sufficient and accurate information is available to support the response and recovery operations, and to recover costs, if applicable. Documentation should be self-descriptive to prove the source and circumstances of the incident, identity of the Potentially Responsible Parties, and impact or potential impact to public health and the environment. Documentation may be written, graphic, audiovisual, or in other form and will include the location of the incident, time, date and duration of the spill, source and cause of the incident, name of the Potentially Responsible Parties, description of the released material, resources affected or threatened, status of response and cleanup efforts, and accurate accounting of public costs incurred.

Examples of other forms of documentation of hazardous materials incidents include:

- Daily or personal logs in bound notebooks, to record all relevant response activities for evidential purposes;

- Photographic documentation at the source of the release, pathway of discharge, and affected biota;
- Samples of released material and material from the suspected source collected according to established chain of custody procedures; and/or
- Statements of witnesses identifying the source of a release.

### 3.5 Evacuation or Shelter-In-Place

It is the responsibility of the Incident Commander to assess the hazardous materials release or potential release. If there is a threat to the public, immediate action needs to be taken for their protection. Actions which protect the public include first aid, search and rescue, designation of an exclusion zone, shelter-in-place, fire suppression and evacuation.

If evacuation is necessary, the Incident Commander will determine the area that will require evacuation. The Incident Commander is also responsible for estimating the number of people in the evacuation area and number of people needing transportation assistance. The Incident Commander will follow all the appropriate Standard Operating Procedures (SOPs) outlined in the local plans.

The Incident Commander will coordinate with law enforcement to identify major evacuation routes and establish traffic control points. Law enforcement will establish evacuation assembly points, monitor traffic flow on evacuation routes and establish security patrols and access control procedures. In a toxic environment, agencies with more appropriate protective clothing and equipment may be called upon to perform these tasks.

If the incident is of sufficient magnitude that the potential for a cross border evacuation exists, the Incident Commander will insure that the appropriate border agencies such as immigration, customs, and bridge authorities are notified (see Appendix B).

### 3.6 Post-Incident Management

The Incident Commander, or a designated replacement, is required to remain on-scene until the immediate danger to public health and the environment has been abated. Primary responsibility for the actual cleanup and restoration costs will remain with the Potentially Responsible Parties. In the event that the Potentially Responsible Parties is unknown, cleanup is the responsibility of the parcel manager, the lessee, the land owner, the affected jurisdiction, the county agency, the state agency, or the Federal agency having jurisdiction.

Cleanup and disposal of the spill should be accomplished as soon as possible. Prompt action is important to minimize damage to the environment. The first step is to establish the cleanup priorities at the site. Once the priorities are set, determination of appropriate cleanup methods are necessary. The cleanup actions must be constantly monitored to ensure the cleanup priorities are being properly addressed.

Specific methods should be utilized to evaluate the cleanup and determine its effectiveness. The evaluation process should assess impacts on the habitat and organisms, effectiveness of removal, public concerns, aesthetics, and costs. The Incident Commander must develop criteria to determine when the cleanup is complete, using applicable or relevant and appropriate requirements. The Incident Commander will ensure proper transportation and disposal of hazardous substances in compliance with local, state and Federal laws.

### **3.7 Response and Cleanup Funding Availability**

The Incident Commander will attempt to identify and have the party accountable for the release assume responsibility for containment, removal and disposal. In Mexico, this will be responsibility of the Civil Protection Authorities in accordance with the National Protection System.

If it is determined that the Potentially Responsible Parties is not acting promptly, taking or proposing to take appropriate actions, or if the Potentially Responsible Parties is unknown, state and Federal funds may be made available to ensure proper cleanup.

Funds may be made available by the State on Scene Coordinator or the Federal on Scene Coordinator. Depending on the circumstances, money may be made available from one or more of the following funds.

#### **3.7.1 State Funds**

The Texas Natural Resource Conservation Commission (TNRCC) Emergency Response team maintains funds that can be used for the response to hazardous materials incidents. These funds are available on a case-by-case basis, generally for incidents that a responsible party has not been identified, or when there is an immediate threat to life and health. These funds can be accessed by contacting the TNRCC at (512) 463-7727.

#### **3.7.2 Federal Funds**

Hazardous Substance Response Trust Fund (Section 2.1.1, "Comprehensive Environmental Response, Compensation and Liability Act") is administered by the U.S. EPA. The fund can be accessed by contacting the NRC at (800) 424-8802, or the FOSC.

Local Government Reimbursement Program is administered by the U.S. EPA. The fund can be accessed by contacting the RCRA-Superfund Hotline at (800) 424-9346.

### **3.8 Communications**

Communications will be established as per the local municipal Standard Operating Procedures (SOPs). In the event of a binational response, communications must be effectively established as soon as possible.

Due to the numerous radio frequencies used by the various response agencies in the Sister Cities area, the Incident Commander must define a primary response channel or rely on cellular communications. Appendix A and C provides a listing of the various phone numbers available. Communications between the Nuevo Laredo Command and the Laredo Command must be established and maintained throughout a binational response. This will ensure a secure and reliable flow of information between the two commands.

### 3.9 Health and Safety

The Incident Commander will be responsible for appointing a Site Safety Officer (SSO) for the incident. The Incident Commander and Site Safety Officer will be responsible for developing and implementing a Site Safety Plan to ensure the health and safety of all response personnel. For response across the border, the Incident Commander and senior official of each response agency will ensure that the appropriate state and Federal worker health and safety laws of their country are observed while in the neighboring country.

The City of Laredo will coordinate with the appropriate agencies in the neighboring country to ensure that the health and safety of all response personnel is maintained. The Incident Commander and Site Safety Officer will be responsible for developing and implementing a Site Safety Plan to ensure the health and safety of all response personnel. For response across the border, the Incident Commander and senior official of each response agency will ensure that the appropriate state and Federal worker health and safety laws of their country are observed while in the neighboring country.

City of Laredo

The Incident Commander will be responsible for appointing a Site Safety Officer (SSO) for the incident. The Incident Commander and Site Safety Officer will be responsible for developing and implementing a Site Safety Plan to ensure the health and safety of all response personnel. For response across the border, the Incident Commander and senior official of each response agency will ensure that the appropriate state and Federal worker health and safety laws of their country are observed while in the neighboring country.

The Incident Commander will be responsible for appointing a Site Safety Officer (SSO) for the incident. The Incident Commander and Site Safety Officer will be responsible for developing and implementing a Site Safety Plan to ensure the health and safety of all response personnel. For response across the border, the Incident Commander and senior official of each response agency will ensure that the appropriate state and Federal worker health and safety laws of their country are observed while in the neighboring country.

The Incident Commander will be responsible for appointing a Site Safety Officer (SSO) for the incident. The Incident Commander and Site Safety Officer will be responsible for developing and implementing a Site Safety Plan to ensure the health and safety of all response personnel. For response across the border, the Incident Commander and senior official of each response agency will ensure that the appropriate state and Federal worker health and safety laws of their country are observed while in the neighboring country.

## **4.0 NATIONAL NOTIFICATION AND/OR RESPONSE**

The Joint Contingency Plan has been signed and implemented by the United States and the United Mexican States.

### **4.1 Mutual Aid Response**

In the event that a hazardous materials incident has overwhelmed the resources of either Nuevo Laredo or Laredo, the Incident Commander or the Commandant de Protección Civil will implement a request for mutual aid from the other sister city.

#### **4.1.1 City of Nuevo Laredo Request**

The Nuevo Laredo Protección Civil and Fire Chief will initiate a request for mutual aid by contacting the Laredo Fire Chief using a prearranged and secure code. Upon receipt of this request, the Laredo Fire Chief will make a determination of appropriate actions and whether or not he is capable of responding without endangering his own responsibilities.

The City of Laredo may respond with the appropriate resources to aid in the request utilizing the Police Department's Standard Operating Procedures (SOPs) for HazMat response. These resources will be determined by a Joint Command established between the Laredo/Nuevo Laredo Fire Chiefs and Protección Civil. The responding resources will report to the Incident Commander and work under the Incident Commander's direction. Laredo will also activate an Emergency Operations Center on the Laredo side of the border. The Emergency Operations Center will evaluate the ongoing situation, and assist the Incident Commander with resources and technical information. The Emergency Operations Center will also be responsible for ensuring that response personnel from Laredo are adequately utilized in an effective and safe manner, by coordinating with the senior on-scene response official from each responding agency.

#### **4.1.2 City of Laredo Request**

The Laredo Fire Chief may initiate a request for mutual aid by contacting the Nuevo Laredo Protección Civil and Fire Chief using a predetermined code. Upon receipt of this request, the Nuevo Laredo Protección Civil and Fire Chief may implement the mutual aid request by providing necessary action, information and/or assistance resources if possible.

The City of Nuevo Laredo may respond with the appropriate resources to aid in the request. These resources will be determined by a Joint Command established between the Laredo/Nuevo Laredo Fire Chiefs and Protección Civil. The responding resources will report to the Incident Commander and work under the Incident Commander's direction. Nuevo Laredo may activate its equivalent Emergency Operations Center in accordance with the Protección Civil municipal authorities. The Emergency Operations Center will evaluate the ongoing situation, and assist the Incident Commander with resources and technical information.

The Incident Commander is also responsible for ensuring that response personnel from Nuevo Laredo are adequately utilized in an effective and safe manner by coordinating with the senior on-scene response official from each responding agency.



### 4.1.3 Response Duties

Local agencies are responsible for emergency planning and preparedness within their jurisdictions. The agencies are expected to assume lead roles during the emergency phase of the incident. Local agencies will conduct response activities within the scope of department training and capabilities. Local agencies will provide emergency response services when possible including, but not limited to:

- notification;
- initial hazard identification;
- initial sampling to determine concentrations of materials, if possible;
- communications;
- rescue and emergency medical service;
- fire fighting;
- security (site perimeter, traffic, and crowd control);
- on-scene liaison with other agencies and organizations; provide public information;
- evacuation; and shelter.

Local government assignments in Laredo, Texas are generally shared among the Laredo Fire Department, Webb County Sheriff's Department, Laredo Police Department, Webb County Emergency Services, emergency medical services, public works and health department. Detailed roles and responsibilities of these agencies can be found in the Laredo and Webb County plan. Specific actions to be taken in response to a binational response can be found in Appendix D through G of this plan.

When responding to requests for mutual aid, local response agencies from both sides of the border will adhere to their department Standard Operating Procedures. At no time should personnel from either city be requested to perform duties outside their training and capabilities. Incident Commanders in both cities will become familiar with the capabilities of the agencies available for response, and use the personnel from the agencies in an appropriate manner. If concerns arise, the Fire Chief and Proteccion Civil Joint Command and respective Emergency Operations Centers will be notified and an appropriate decision will be made at that level.

## **4.2 Joint Response Team**

When the magnitude of an incident exceeds local and state response capabilities, or when a response involves more than one state jurisdiction, or Federal lands, the Federal government will coordinate the response operation and provide assistance as necessary.

Regional level contingency planning is performed by the U.S. EPA Regional Response Team, and national level contingency planning through the National Response Team (NRT). In Mexico, Protección Civil has jurisdiction of hazardous materials incident planning. The Joint Response Team performs U.S./Mexico border area contingency planning and training activities. The Joint Response Team is chaired by the U.S. EPA for the U.S. and by Gobernación for Mexico.

### **4.2.1 U.S. Environmental Protection Agency**

The U.S. EPA activates and operates the Federal response system for inland hazardous materials incidents and provides a Federal on Scene Coordinator who can assess technical resources to provide expert advice on public health and environmental effects of a release.

### **4.2.2 Regional Response Team**

The Regional Response Team (RRT) is co-chaired by the U.S. EPA and the U.S. Coast Guard and consists of representatives from selected state and Federal agencies. It plans, prepares and responds to hazardous materials incidents, providing advice and recommendations to the Federal on Scene Coordinator. It may request resources from local, state or Federal agencies and the private sector.

### **4.2.3 Protección Civil**

The Sistema Nacional de Protección Civil shall establish, in each federal and municipal entity, civil defense organizations to handle emergencies occurring in each jurisdiction. Protección Civil has prepared the "ANEXO III - Plan de Respuesta a Emergencia Con Materiales Peligrosos" (Annex III - Hazardous Materials Response Plan). This plan is designed to be used by all entities in Mexico to aid in developing contingency plans for Hazardous Materials incidents and is co-chaired by the Director of the Chemical Emergency Preparedness and Prevention Office (CEPPO) in Washington D.C.

## **4.3 Joint Response Team Responsibilities**

For inland releases, the U.S. EPA provides the Federal on Scene Coordinator. Upon notification of a release of hazardous substances that is crossing or is likely to cross the U.S./Mexico border, the National Response Center will notify the Federal On Scene Coordinator. The Federal on Scene Coordinator will determine as quickly as possible the need for activating the Regional Response Team, the Joint Response Team, the Environmental Response Team (ERT), or the National Response Team. For incident notification in Mexico, Protección Civil maintains a 24-hour telephone number in Mexico City.

When the U.S. and Mexico have agreed to initiate a joint response to an incident, the function and responsibilities of the Joint Response Team include:

- Advise the Federal On Scene Coordinator about measures needed to respond to the incident and what resources are available to carry out those measures;
- Evaluate and make recommendations concerning the measures taken by the Federal On Scene Coordinator;
- Provide continuing advice to the Federal on Scene Coordinator;
- Coordinate and use as appropriate the resources that agencies or persons of the U.S. or Mexico or a third party can contribute;
- Assist the Federal on Scene Coordinator in preparing information releases for the public; and
- Participate in the termination of response.

## 5.0 TRAINING AND EXERCISES

The Cross Border Contingency Plan, as written pursuant to the U.S./Mexico Joint Contingency Plan, is an administrative summary of the relevant hazardous materials emergency response plans which have jurisdiction within the planning area. Each of the operational plans referenced require training and exercising to ensure that responders are always in a state of readiness. The concepts and resources for training and exercising are important to emphasize as binational relationships and activities develop.

Preparing a written plan with well-defined operational roles, policies and resource acquisition procedures is an essential step. The written plan should contain training requirements and procedures for responders. Exercising the plan provides training, allows response personnel to become thoroughly familiar with response procedures, resources and systems, and enables planners to identify areas of the plan which need improvement. Appendix H and I present the Acronyms and Definitions, respectively. Appendix J presents references to response procedures and understandings from various agencies.

### 5.1 Training

Individual agencies are responsible for their own training. Internal training, private contractors, and state or regional training resources are some of the options available to local agencies. Agencies must ensure that personnel are adequately trained for response operations that they may perform. This training must comply with all applicable local, state, and Federal worker health and safety regulations.

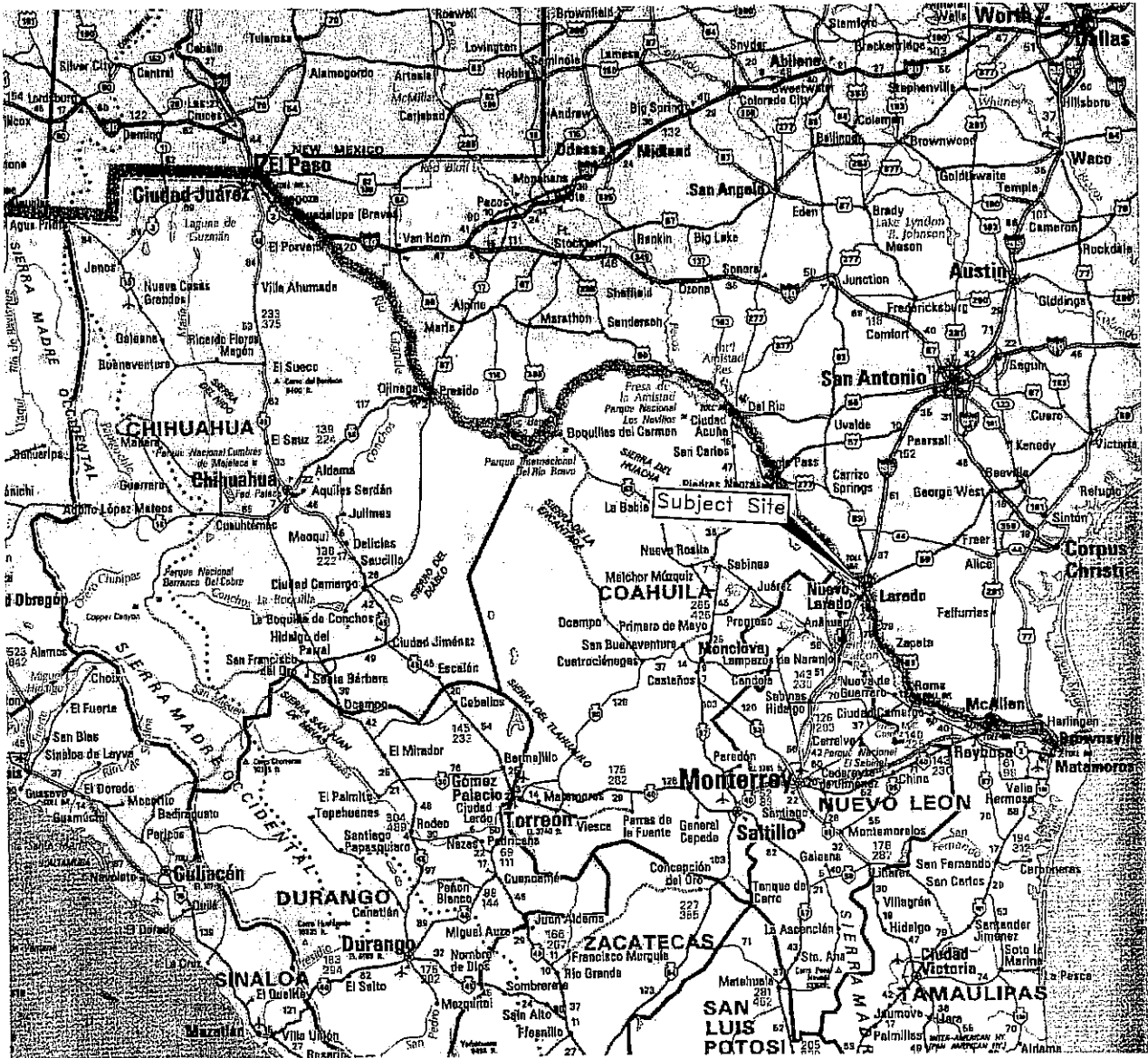
### 5.2 Exercises

Local and regional hazardous materials contingency plan exercises are encouraged, as they are the best means of keeping the plans current and active. Laredo/Nuevo Laredo routinely conduct joint exercises that allow for cross training of personnel. This ensures that deficiencies in response activities are identified. In keeping the Laredo/Nuevo Laredo Sister Cities Hazardous Materials Incident Contingency Plan current, the plan will be exercised annually.

# FIGURES

1  
2  
3  
4  
5  
6  
7  
8  
9  
10  
11  
12  
13  
14  
15  
16  
17  
18  
19  
20  
21  
22  
23  
24  
25  
26  
27  
28  
29  
30  
31  
32  
33  
34  
35  
36  
37  
38  
39  
40  
41  
42  
43  
44  
45  
46  
47  
48  
49  
50  
51  
52  
53  
54  
55  
56  
57  
58  
59  
60  
61  
62  
63  
64  
65  
66  
67  
68  
69  
70  
71  
72  
73  
74  
75  
76  
77  
78  
79  
80  
81  
82  
83  
84  
85  
86  
87  
88  
89  
90  
91  
92  
93  
94  
95  
96  
97  
98  
99  
100

100

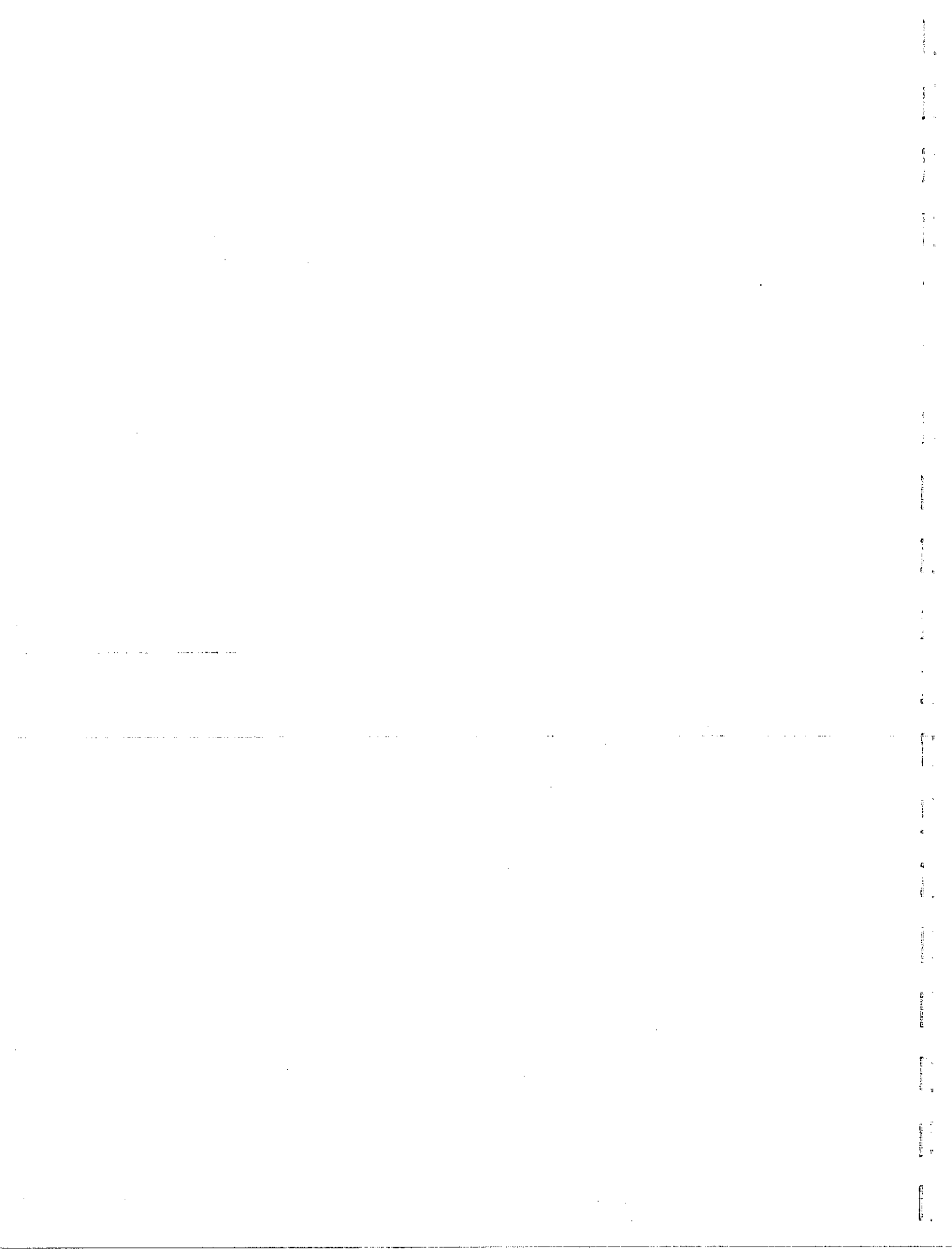


Re.: 1995 Rand McNally Road Atlas  
 Scale 1 In. = 35 Mi.

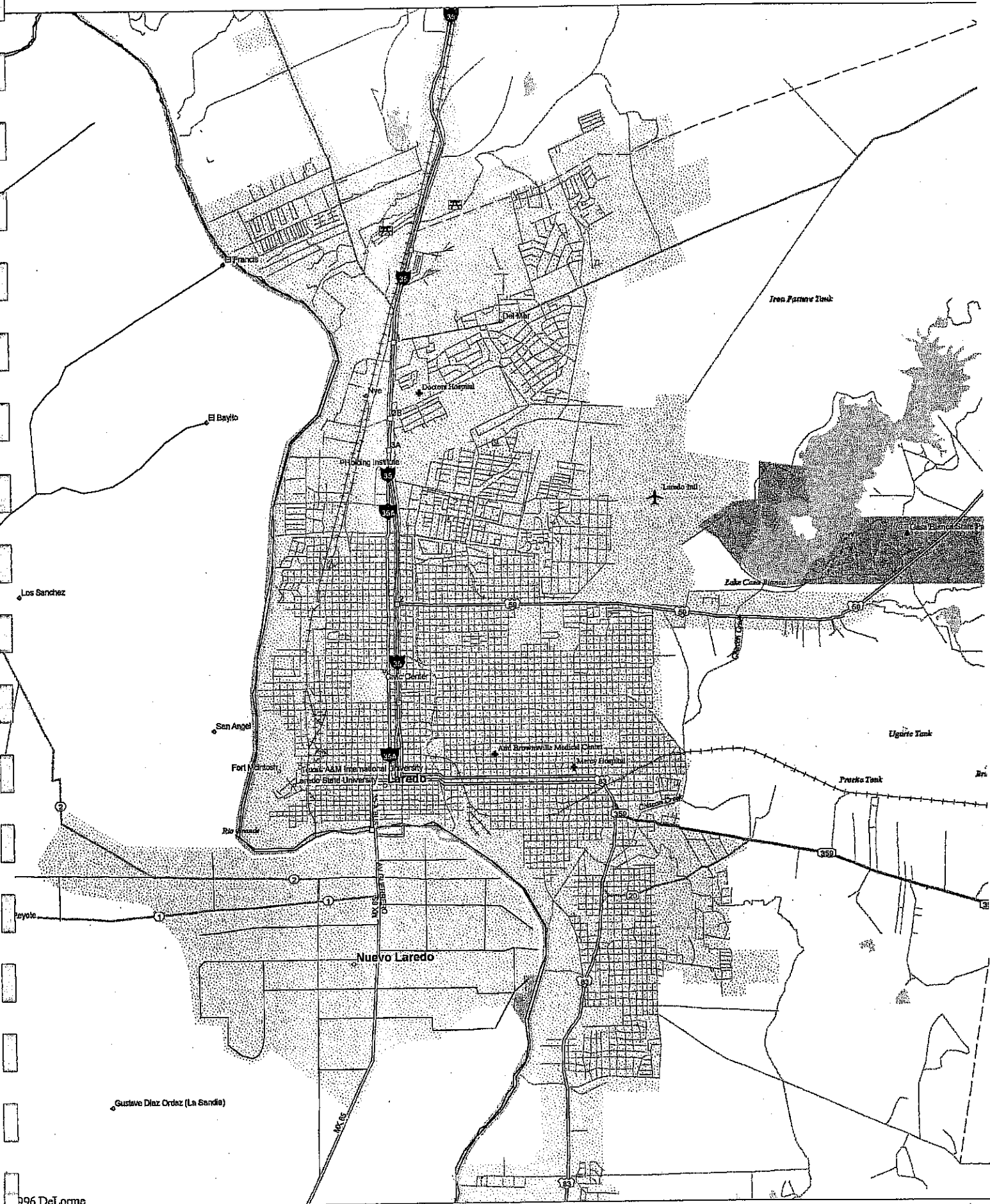


U.S./Mexico Sister Cities  
 Laredo, Texas  
 Nuevo Laredo, Tamaulipas  
 AEC Project No. 2148-015

FIGURE 1  
 AREA MAP



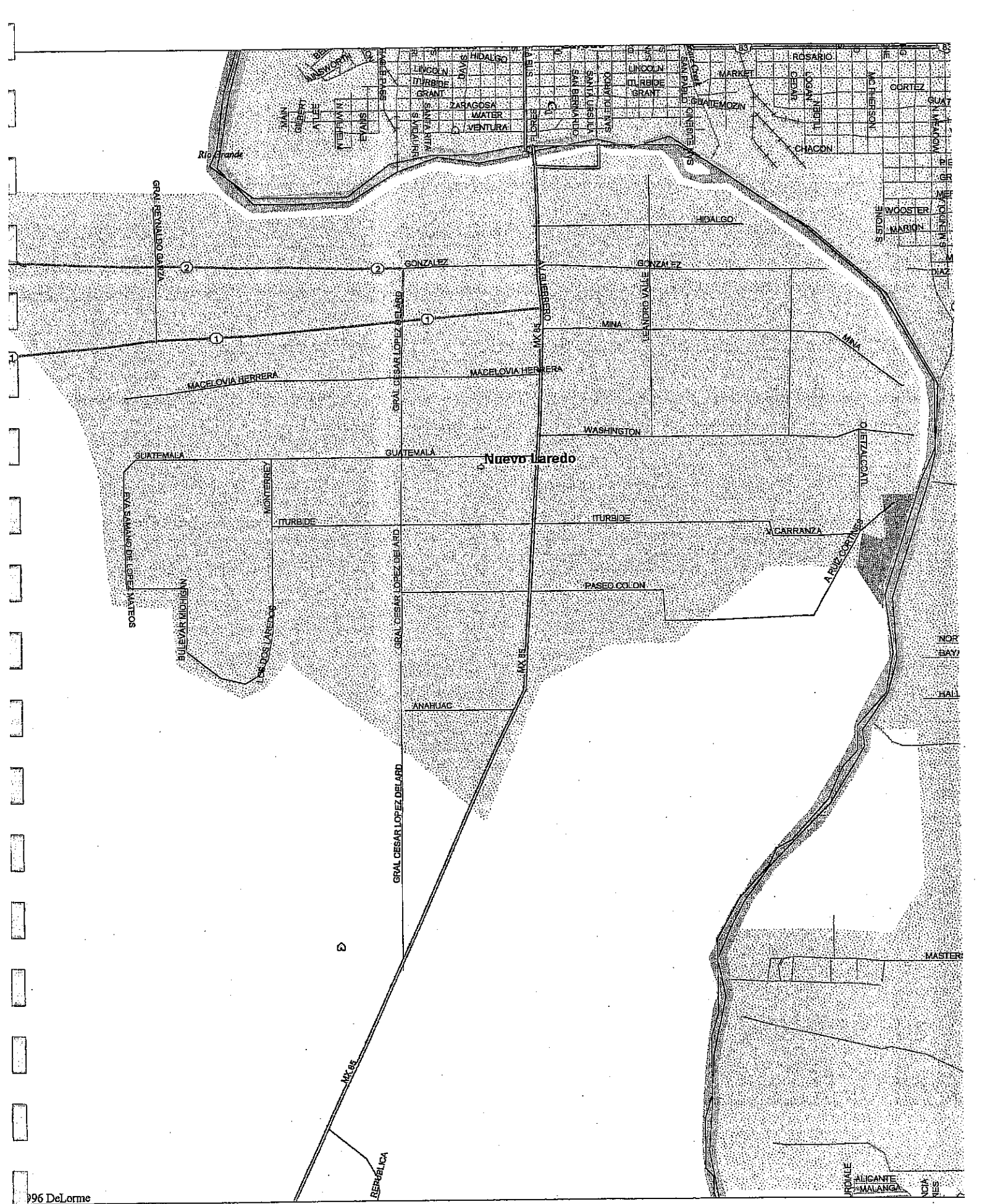


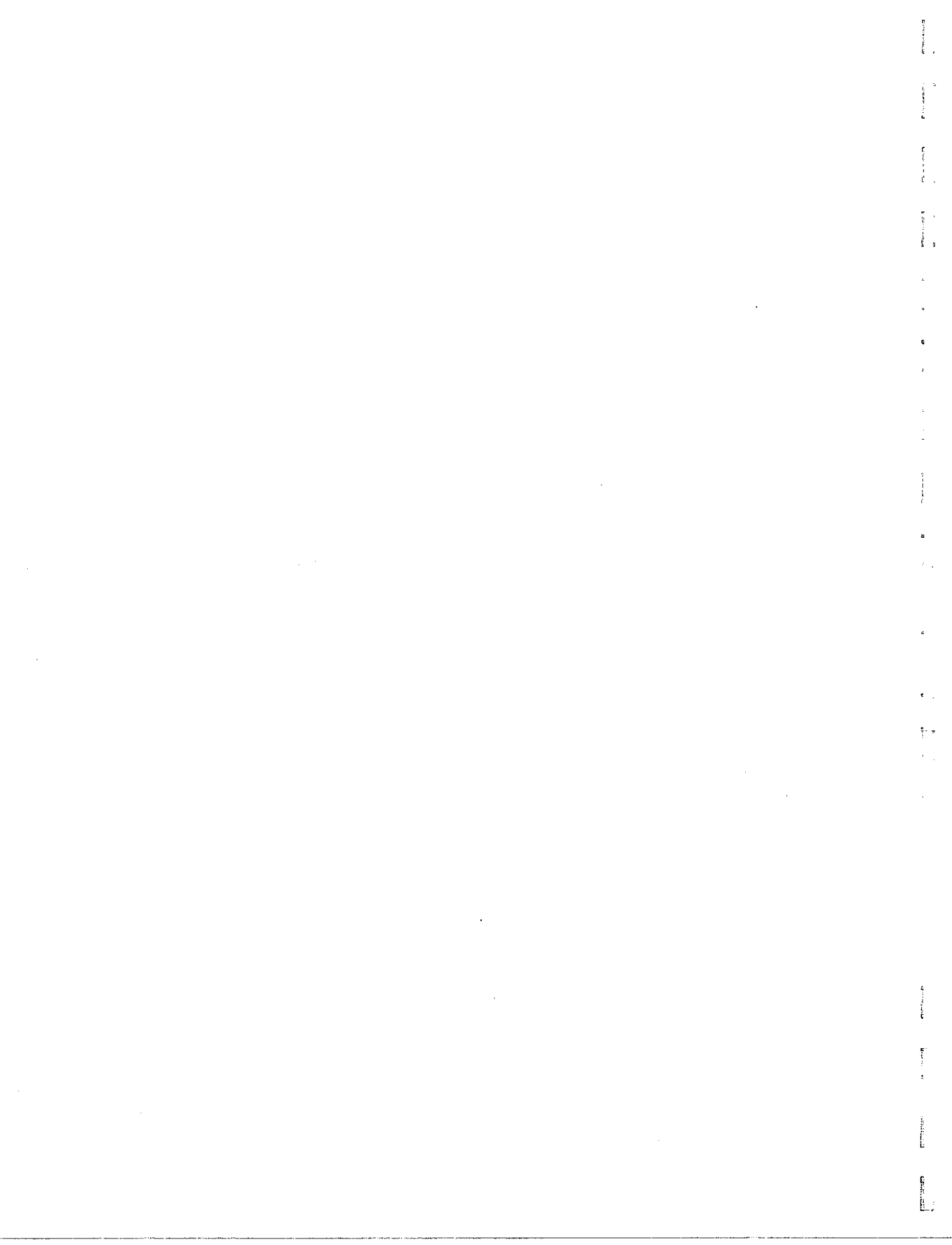


1  
2  
3

4  
5  
6  
7  
8  
9  
10  
11  
12  
13  
14  
15  
16  
17  
18  
19  
20  
21  
22  
23  
24  
25  
26  
27  
28  
29  
30  
31  
32  
33  
34  
35  
36  
37  
38  
39  
40  
41  
42  
43  
44  
45  
46  
47  
48  
49  
50  
51  
52  
53  
54  
55  
56  
57  
58  
59  
60  
61  
62  
63  
64  
65  
66  
67  
68  
69  
70  
71  
72  
73  
74  
75  
76  
77  
78  
79  
80  
81  
82  
83  
84  
85  
86  
87  
88  
89  
90  
91  
92  
93  
94  
95  
96  
97  
98  
99  
100

101  
102  
103  
104  
105  
106  
107  
108  
109  
110  
111  
112  
113  
114  
115  
116  
117  
118  
119  
120  
121  
122  
123  
124  
125  
126  
127  
128  
129  
130  
131  
132  
133  
134  
135  
136  
137  
138  
139  
140  
141  
142  
143  
144  
145  
146  
147  
148  
149  
150  
151  
152  
153  
154  
155  
156  
157  
158  
159  
160  
161  
162  
163  
164  
165  
166  
167  
168  
169  
170  
171  
172  
173  
174  
175  
176  
177  
178  
179  
180  
181  
182  
183  
184  
185  
186  
187  
188  
189  
190  
191  
192  
193  
194  
195  
196  
197  
198  
199  
200





## APPENDIX A EMERGENCY NOTIFICATION

Any substantial threat to the public health, safety, or the environment due to, or threat of, an accidental spill or release of an oil or hazardous material into the air, surface water, groundwater, or onto the ground, should be reported to:

**UNITED STATES OF AMERICA**

**REPUBLIC OF MEXICO**

**First Response**

**First Response**

911

06

**National Response Center**

**National Coordinating Center for Civil Protection Agency**

01-800-424-8802 (from U.S.)  
95-202-426-2675 (from Mexico)

91-5-70-5-52-70 (from Mexico)  
011-52-5-70-5-52-70 (from U.S.)

**U.S. EPA Region VI Spill Phone**

**Communications Center, Civil Protection Agency**

01-214-665-2222 (from U.S.)  
95-214-665-2222 (from Mexico)

91-800-7-02-26 (from Mexico)  
011-52-7-02-26 (from U.S.)

**TNRCC Emergency Spill Reporting Line**

1-800-451-0491 (from U.S.)

**Federal Prosecutor for Environmental Protection - PROFEPA**

**CHEMTREC**  
1-800-424-9300

91-800-29-3-12-40 (from Mexico)  
011-52-29-3-12-40 (from U.S.)

## APPENDIX B

### CUSTOMS AND IMMIGRATION RESPONSE

In the case of an emergency and/or disaster that may occur in the Republic of Mexico (ROM) or the United States which requires emergency aid from various U.S. local or state agencies, including the Laredo Fire and Police Departments or aid from a similar ROM agency, the municipality requesting aid will notify one of the following:

- 1) U.S. Customs Service
- 2) U.S. Immigration and Naturalization Service
- 3) City of Laredo Bridge System

Upon receipt of the call requesting emergency aid, the Customs, Immigration or Bridge personnel will immediately notify the other two groups, who will be responsible for notifying their "cross the border" counterpart.

The U.S. Customs shift supervisor at the bridge of concern will be contacted and will take whatever immediate action is necessary to facilitate the crossing of the emergency equipment and personnel. Once arrangements have been made to facilitate the cross border emergency aid, the supervisor will notify the Assistant Director, Inspection and Control or in his absence any available Chief Inspector.

Emergency equipment of this nature is admissible under section 10.107 of the Customs Regulations.

**UNITED MEXICAN STATES CUSTOMS CROSS BORDER CONTINGENCY PLAN**

In the case of an emergency and/or disaster that may occur in the Republic of Mexico (ROM) or the United States which requires emergency aid from various ROM local or state agencies, including the Nuevo Laredo Proteccion Civil department or aid from a similar U.S. agency, the municipality will call and notify one of the following:

- 1) Republic of Mexico Customs Service
- 2) Republic of Mexico Immigration and Naturalization Service
- 3) City of Nuevo Laredo Bridge Department
- 4) Fire Department

Upon receipt of the call from the municipality which has requested the emergency aid, the Customs, Immigration or Bridge personnel will immediately notify the other two groups, who will be responsible for notifying the "cross the border" counterpart.

The Republic of Mexico Customs shift supervisor at the bridge of concern will be contacted and will take whatever immediate action is necessary to facilitate the crossing of the emergency equipment and personnel. Once arrangements have been made to facilitate the cross border emergency aid, the supervisor will notify Protección Civil.

**CONTACT INFORMATION**

706 - 207	John Garcia	Webb County Sheriff
706 - 207	John Houghton, Jr.	Public Safety (DPS)
706 - 207		U.S. Customs
706 - 207	International Bridge	U.S. Port Director
706 - 207	International Bridge	
706 - 207	Suzanne Jones	State Regional Airfield Center
706 - 207		Chambers County Sheriff

**APPENDIX C**  
**CITY OF LAREDO TELEPHONE NUMBERS**

<b>ORGANIZATION</b>	<b>NAME OF CONTACT</b>	<b>TELEPHONE NUMBER</b>
Mayor	Elizabeth G. Flores	791- 7400
City Manager	Florencio Pena, III	791 - 7301
Fire Chief	Tomas Ramirez	795 - 2150
Deputy Fire Chief	Rodolfo Sepulveda	795 - 2150
Assistant Fire Chief	Leopoldo Ramon	795 - 2150
Fire Marshall	Eugenio Moncivais	795 - 2150
Police	Agustin Dovalina	795 - 2800
EMS	Ricardo A. Rangel	795 - 2153/ 911
Health Department	Jerry Robinson	723 - 2051
Public Works	Jose Guerra	795 - 2500

**OTHER TELEPHONE NUMBERS**

Webb County Sheriff	Juan Garza	726 - 4911
Texas Department of Public Safety (DPS)	Scott Houghton, Lt.	728 - 2200
U.S. Customs		726 - 2267
I.N.S. Port Director	International Bridge	722 - 2484
	Juarez Bridge	722 - 5440
Mercy Regional Medical Center	Susan Jones	718 - 6222
Columbia Doctor's Hospital		723 - 1131



## CITY OF NUEVO LAREDO TELEPHONE NUMBERS

ORGANIZATION	REPRESENTATIVE	TELEPHONE
Municipal President	C.P. Marcos Alejandro Garcia	12-45-80/13-29-96
Protección Civil	Lic. Jose Trinidad Vasquez Lopez	12-89-11
Secretary	Lic. Eusebio Salinas	12-82-14
Director of Public Works	Ing. Rafael Hernandez Roux	12-77-44/12-00-68
Chief of Ecology	Ing. Oscar Sillar Gonzalez	12-10-05
Municipal Security	Prof. Jose Matias Garcia	12-00-89
Fire Department	Comdte. C. Reynaldo Lopez	12-30-30/12-21-24
Fire Department Substation		12-62-52
National Emergency Commission		13-47-09
Municipal Police		12-21-46/12-30-25
Transit Police		12-00-89/12-86-67
Red Cross		12-09-49/12-09-89
COMAPA		13-28-28/13-28-11 12-91-17/12-93-27
Civil Hospital		12-88-88/12-09-33
Hospital San Jose		14-91-60/14-95-06
General Hospital		15-80-20/15-80-80/15-80-43
Specialized Hospital		14-08-05/14-06-53/14-07-58/14-08-12
Hospital de IMSS		14-08-05/12-08-71/12-34-91/12-11-84
Mexican Consulate in USA.	C. Raul Cardenas Heralde	723-6369
USA Consulate in Mexico	Isaiah L. Parnell	14-09-96/14-05-12
Roads and Bridges No.1	Lic. Carlos Manzur Arzola	12-09-97/12-20-05

Roads and Bridges No.2	Arq. Mario Alberto Martinez Garcia	13-26-18/12-46-89
Railroad Transportation Mexico	Sr. Ramiro Delgado Rivera	12-10-92/12-12-76
Pemex Refinery	Lic. Victor Manuel Cantu Leal	10-14-54/10-14-55

**Communications**

Mexico Telephones	Ing. Francisco Javier Ramirez Saenz	15-01-44/12-44-11
International Parrots(Ham radio)	C. Manuel Coronado Hernandez	14-05-05
Radio Club	C. Victor Manuel Azua	14-71-91
Radio Club Experimentadores	Sr. Jose Luis Pomar	12-34-97
Auxiliary Radio Group	C. Jesus Conferino Ruiz Garcia	12-96-48

APPENDIX D

ACTION BY LAW ENFORCEMENT AGENCIES

GENERAL

In any type of disaster that evokes an international response, law enforcement will be involved in a multitude of areas. The need for security, traffic control, crowd control, and to supply effective information on separated persons, specifically in relocation areas, will be paramount.

PROCEDURES

In the event of a disaster being declared by the municipalities, counties, states, or countries represented in this plan, Law Enforcement Agencies will follow their appropriate municipal, county, or regional contingency plans. The Cross Border Plan is considered an annex to the standing municipal, county, or regional plans and law enforcement agencies responsible to these plans will work within the same framework of the individual plans adopted by law.

In the event that evacuation from a disaster area into another municipality, county or country takes place, Law Enforcement Agencies will supply the following:

RESPONSIBILITIES AND FUNCTIONS

- i. To protect life and property and prevent and investigate crime that may be generated due to the evacuation.
- ii. To alert persons endangered by the effects of the disaster.
- iii. To alert and assist other emergency services.
- iv. To control traffic and crowds and ensure clear entrance and exit to and from cross border bridges and the control of traffic to designated holding areas.
- v. To maintain law and order at the holding (reception) areas to prevent unauthorized entry into these areas.
- vi. To evacuate citizens from danger areas when necessary.

To establish communication links with all law enforcement agencies affected and to supply constant information through the affected municipality, subject to law enforcement needs.

## APPENDIX E

### STANDARD OPERATING PROCEDURES FOR FIRE AGENCIES

GENERAL: Three distinct fire disaster situations could arise requiring the assistance of cross border fire service. A **level-one** incident or situation occurs when specialized equipment and/or manpower is most readily or exclusively available across the border or the municipality's usual local mutual aid resources are fully engaged. **Second-level** situations are defined as incidents where countywide or region-wide fire resources are fully engaged and additional fire service assistance is needed beyond the capability of the county or region. **Level-three** fire disasters require an executive declaration either from a state or local executive. Requests for assistance by either Fire Chief and Proteccion Civil must be made directly to each other using a predetermined code. The decision to respond rests with the Fire Chief and Proteccion Civil and is determined case by case by his capability to cover his jurisdiction and render aid at the same time.

#### 1) Liability

A. Any loss or damage to, or expense incurred in the operation of fire apparatus or other equipment answering a call for assistance from outside territory, and the cost of any materials used in connection with such call, and for salaries and other compensation and traveling and maintenance expense of the assisting forces furnished during the time they shall not be performing their duties for the assisting municipality/entity, shall be a charge upon the municipality which issued the call for assistance. This paragraph shall not apply to the case of damage or expense to fire apparatus or equipment which occurred while responding to a request for assistance or returning from the scene upon completing the assistance and while the apparatus or equipment was not involved in the emergency operation, and which was caused by:

1. The act or omission of a fireman in the performance of his duties who is a member of the assisting force which suffered the damage; or
2. The act or omission of a third party or through an instrumentality not connected with the actual emergency operation.

While responding to a call for assistance, the municipality or entity shall be liable for the negligence of firemen of that municipality or entity occurring in the performance of their duties in the same manner and to the same extent as if such negligence occurred in the performance of their duties within the area regularly served and protected by said unit.

Any such claim for loss, damage, expense or cost shall not be allowed unless within 60 days after the same shall have been sustained, a written notice of such claim, under oath,

itemizing such loss or expense is served by mail upon the fiscal officer of the municipality/entity which requested assistance.

**B. Liability for workers' compensation for fire fighters involved in a cross border situation remains with the fire fighters' home fire company.**

**2) Procedure**

Agencies will operate according to the standard operating procedures of individual fire agencies.

UNAVAN REIKZEDA COPE...  
 UNAVAN REIKZEDA COPE...  
 UNAVAN REIKZEDA COPE...  
 UNAVAN REIKZEDA COPE...  
 UNAVAN REIKZEDA COPE...

**PROCEDURE**

- a. In the event of a hazard, the services of local fire agencies shall be requested through a call-out arrangement as provided for in their respective Standard Operating Procedures.
- b. Requesting authority.
- c. The requesting authority will establish an assembly point as close as possible to an interagency border crossing point. This location shall be on a main highway or an easily accessed secondary highway that is well traveled and easy to locate.
- d. It will be the responsibility of the requesting agency to assemble their personnel at this location and to provide transportation from that site to the assembly point as designated or arranged by the requesting authority.
- e. The requesting authority will provide sufficient space to receive and if necessary, store any transportation used by the requesting authority in traveling to the assembly area.
- f. The requesting authority will provide transportation to move the responding personnel to the respective work areas.
- g. During the time that the requesting personnel are on site it will be the responsibility of the requesting authority to provide shelter, food, equipment and any needed services to the responding personnel.

## APPENDIX F

### ACTION BY SOCIAL SERVICES DEPARTMENTS

#### GENERAL

1. In any type of disaster that invokes an international response, there will be a need to house, feed, and provide medical and support services to a large number of people. In addition there will be a need to register displaced persons, reunite separated persons within the disaster area and provide information and respond to inquiries from outside the disaster area.

NOTE: EACH OF THE DEPARTMENTS AND AGENCIES HAVING RESPONSIBILITIES UNDER THIS PROCEDURE MAINTAIN INDIVIDUAL OPERATING PLANS. IN ALL CIRCUMSTANCES, THE OPERATING PROCEDURE OF THE REQUESTING AUTHORITY WILL PREVAIL.

#### PROCEDURE

2. In the event of a disaster, the services of Social Services staff, on either side of the border, will be activated through a call-out originating as provided for in their respective Standard Operating Procedure.
3. Requesting authority:
  - a. The requesting authority will establish an assembly point as close as possible to an international border crossing point. This location should be on a main highway or an easily accessed secondary highway that is well marked and easy to locate.
  - b. It will be the responsibility of the responding agency to assemble their personnel at a site of their choice and to provide transportation from that site to the assembly point as designated by the requesting authority.
  - c. The requesting authority will provide sufficient space to receive and, if necessary, store any transportation used by the responding authority in travelling to the assembly area.
  - d. The requesting authority will provide transportation to move the responding personnel to the respective work areas.
  - e. During the time that the responding personnel are on the site, it will be the responsibility of the requesting authority to provide shelter, food, equipment, and any medical needs to the responding personnel.

- f. The responding authority will arrange for all necessary relief for any and all responding personnel.
- g. The requesting authority will arrange to register and provide identification of responding personnel and will keep this information updated and available at the Emergency Operations Center.
- h. Upon receipt of an official declaration that the emergency situation has been terminated, the requesting authority will ensure that all personnel are so advised and will provide the necessary transportation to return the responding personnel to either (1) their own transportation or (2) to a satisfactory drop-off spot in the responding agency's area.
- i. The responding agency will be attached to and will work under the command of the requesting authority.

**GENERAL**

It is generally understood that the responding authority will be asked to provide personnel to assist in the following areas:

- (i) registration
- (ii) care and supervision of evacuees
- (iii) assistance at emergency welfare centers in areas of counseling; grief counseling; general inquiries; location of persons; reconciliation of families; supervision of children, etc.

## APPENDIX G

### CROSS BORDER EMERGENCY MEDICAL SERVICES RESPONSE SEQUENCE

- Report is made.
- Confirm the incident.
- Activate the Response Plan, request that neighboring municipality be placed on standby alert.
- Place hospital on standby.
- Request status of available resources.
- Assume Emergency Medical Services command and report to Unified Command Post.
- Decon Sector established.
- Staging Sector established.
- Triage Sector established.
- Establish hospital communications.
- Obtain initial hospital capability/bed inventory from hospitals.
- Upgrade neighboring municipality from standby to operational mode if mutual aid will be necessary, and advise the municipality of resource needs.
- Establish Treatment Sector.
- Develop listing of receiving hospitals and identify access routes.
- Begin transportation of patients from Transportation Sector by priority to appropriate hospital. (Patients being transported across the border will be double tagged per guidelines.)
- Provide appropriate pre-hospital care prior to transport if treatment sector has been established.
- Continue to monitor hospital candidates.
- Advise Medical Examiners and mortuaries if necessary.



APPENDIX G  
(Continued)

**GUIDELINES FOR AMBULANCES  
REQUESTED TO PROVIDE CROSS BORDER ASSISTANCE**

When requested to provide assistance to Emergency Medical Services across the border for major incident/disaster situations, etc., all ambulance crews will follow these guidelines:

- 1) Report to meeting area as directed by dispatch (usually a border crossing).
- 2) Police will meet and escort vehicles to site.
- 3) Maintain communications with dispatch on assigned channel.
- 4) On arrival at site, report to staging area as directed or site commander.
- 5) Advise EMS command whether crew is Advanced Life Support (ALS) or Mobile Intensive Care Unit (MICU).
- 6) Provide appropriate pre-hospital care prior to transport if treatment sector has been established as directed by Emergency Medical Services command.
- 7) Transportation of patients from transportation sector by priority to appropriate hospital as directed. Patients being transported cross border will be double tagged as per guidelines.
- 8) Return to site after delivering patients to appropriate hospital.  
Clear and return to home base when directed by dispatch.

## APPENDIX H

### ABBREVIATIONS AND ACRONYMS

ALS	Advanced Life Support
CERCLA	Comprehensive Environmental Response Compensation and Liability Act
CLAM	Comite Local de Ayuda Mutua
DPS	Texas Department of Public Safety
EOC	Emergency Operations Center
EMS	Emergency Medical Services
ERT	Environmental Response Team
FOSC	Federal On-Scene Coordinator
HAZMAT	Hazardous Materials
IC	Incident Commander
ICP	Incident Command Post
ICS	Incident Command System
JCP	Joint Contingency Plan
JRT	Joint Response Team
LEPC	Local Emergency Planning Committee
NCP	National Contingency Plan
NRC	National Response Team
PRP	Potentially Responsible Party
PROTECCIÓN CIVIL	Mexican Civil Protection Agency
RCRA	Resource Conservation and Recovery Act
RP	Responsible Party
RRT	Regional Response Team
SEMARNAP	Secretaria de Medio Ambiente Recursos Naturales e Pesca
SOP	Standard Operating Procedures
SOSC	State On-Scene Coordinator
SSO	Site Safety Officer
TNRCC	Texas Natural Resource Conservation Commission
U.S. EPA	United States Environmental Protection Agency

**APPENDIX I**  
**DEFINITIONS**

**Area Contingency Plan:** As defined by sections 311(a) (19) and (j) (4) of CWA, as amended by OPA, means the plan prepared by an Area Committee, that in conjunction with the NCP, shall address the removal of a discharge including a worst-case discharge and the mitigation or prevention of a substantial threat of such a discharge from a vessel, offshore facility, or on-shore facility operating in or near an area designated by the President.

**Bulk:** Material that is stored or transported in a loose, unpacked, liquid, powder, or granular form capable of being conveyed by a pipe, bucket, chute or belt system.

**Comite Local Ayuda de Mutua (CLAM):** A group of local representatives representing Mexico industry and agencies who assist in the preparation of spill response plans on the Mexico Border.

**Cleanup:** For the purposes of this document, cleanup refers to the removal and/or treatment of oil, hazardous substances, and/or the waste or contaminated materials generated by the incident. Cleanup includes restoration of the site and its natural resources.

**Coastal Waters:** The waters of the coastal zone (except for the Great Lakes and specified ports and harbors on inland rivers). Precise boundaries are identified in USCG/EPA agreements, Federal Regional Contingency Plans and Area Contingency Plans.

**Decontamination:** The removal of hazardous substances from personnel and their equipment necessary to prevent adverse health effects and secondary contamination.

**Discharge:** Any spilling, leaking, pumping, pouring, emitting, emptying or dumping.

**Dispersant:** Those chemical agents that emulsify, disperse, or solubilize oil into the water column or induce the surface spreading of oil slicks to facilitate dispersal of the oil into the water column.

**Drinking Water Supply:** As defined by section 101(7) of CERCLA, means any raw or finished water source that is or may be used by a public water system (as defined in the Safe Drinking Water Act) or as drinking water by one or more individuals.

**Environment:** As defined by section 101(8) of CERCLA, means the navigable waters, the waters of the contiguous zone, and the ocean waters of which the natural resources are under the exclusive management authority of the United States under the Magnuson Fishery Conservation and Management Act; and any other surface water, ground water, drinking water supply, land surface and subsurface strata, or ambient air within the United States or under the jurisdiction of the United States.

**Environmentally Sensitive Area:** An especially delicate or sensitive natural resource that requires protection in the event of a pollution incident.

Ground Water: As defined by section 101(12) of CERCLA, means water in a saturated zone or stratum beneath the surface of land or water.

Hazardous Material: Any non-radioactive solid, liquid, or gaseous substance which, when uncontrolled, may be harmful to humans, animals, or the environment: including, but not limited to, substances otherwise defined as hazardous wastes, dangerous wastes, extremely hazardous wastes, oil or pollutants.

Incident: Any event that results in a discharge of oil or hazardous materials. Action by emergency service personnel may be required to prevent or minimize loss of life or damage to property and/or natural resources.

Inland Waters: Those waters of the United States in the inland zone, waters of the Great Lakes, Lake Champlain, and specified ports and harbors on inland rivers.

Inland Zone: The environment inland of the coastal zone excluding the Great Lakes, Lake Champlain, and the specified ports and harbors on inland rivers. The term inland zone delineates an area of Federal responsibilities for response actions. Precise boundaries are determined by EPA/USCG agreements and identified in Federal Regional Contingency Plans.

Local Emergency Planning Committee (LEPC): A group of local representatives appointed by the State Emergency Response Commission (SERC) to prepare local oil and hazardous materials spill response plans as per the mandates of the Superfund Amendments and Reauthorization Act, Title III.

Natural Resources: Land, fish, wildlife, biota, air, water, ground water, drinking water supplies, and other such resources belonging to, managed by, held in trust by, appertaining to, or otherwise controlled by municipal, state, or federal governments or private parties.

On-Scene Coordinator (OSC): The government official at an incident scene responsible for coordinating response activities.

Primary Response Contractor or Contractors: An individual, company, or cooperative that has contracted directly with the plan holder to provide equipment and/or personnel for the containment or cleanup of spilled oil or hazardous material.

Regional Response Team (RRT): The federal response organization (consisting of representatives from selected federal and state agencies) which acts as a regional body responsible for planning and preparedness before an oil spill occurs and for providing advice to the OSC in the event of a major or substantial spill.

State Emergency Response Commission (SERC): A group of officials appointed by the state governor to implement the provisions of Title III of the Federal Superfund Amendments and Reauthorization Act of 1986 (SARA). The SERC approves the State Oil and Hazardous Substances Discharge Prevention and Contingency Plan and Local Emergency Response Plans.

# APPENDIX J

## REFERENCES

- 1. [Illegible text]
- 2. [Illegible text]
- 3. [Illegible text]
- 4. [Illegible text]
- 5. [Illegible text]
- 6. [Illegible text]
- 7. [Illegible text]
- 8. [Illegible text]
- 9. [Illegible text]
- 10. [Illegible text]
- 11. [Illegible text]
- 12. [Illegible text]
- 13. [Illegible text]
- 14. [Illegible text]
- 15. [Illegible text]
- 16. [Illegible text]
- 17. [Illegible text]
- 18. [Illegible text]
- 19. [Illegible text]
- 20. [Illegible text]
- 21. [Illegible text]
- 22. [Illegible text]
- 23. [Illegible text]
- 24. [Illegible text]
- 25. [Illegible text]
- 26. [Illegible text]
- 27. [Illegible text]
- 28. [Illegible text]
- 29. [Illegible text]
- 30. [Illegible text]
- 31. [Illegible text]
- 32. [Illegible text]
- 33. [Illegible text]
- 34. [Illegible text]
- 35. [Illegible text]
- 36. [Illegible text]
- 37. [Illegible text]
- 38. [Illegible text]
- 39. [Illegible text]
- 40. [Illegible text]
- 41. [Illegible text]
- 42. [Illegible text]
- 43. [Illegible text]
- 44. [Illegible text]
- 45. [Illegible text]
- 46. [Illegible text]
- 47. [Illegible text]
- 48. [Illegible text]
- 49. [Illegible text]
- 50. [Illegible text]
- 51. [Illegible text]
- 52. [Illegible text]
- 53. [Illegible text]
- 54. [Illegible text]
- 55. [Illegible text]
- 56. [Illegible text]
- 57. [Illegible text]
- 58. [Illegible text]
- 59. [Illegible text]
- 60. [Illegible text]
- 61. [Illegible text]
- 62. [Illegible text]
- 63. [Illegible text]
- 64. [Illegible text]
- 65. [Illegible text]
- 66. [Illegible text]
- 67. [Illegible text]
- 68. [Illegible text]
- 69. [Illegible text]
- 70. [Illegible text]
- 71. [Illegible text]
- 72. [Illegible text]
- 73. [Illegible text]
- 74. [Illegible text]
- 75. [Illegible text]
- 76. [Illegible text]
- 77. [Illegible text]
- 78. [Illegible text]
- 79. [Illegible text]
- 80. [Illegible text]
- 81. [Illegible text]
- 82. [Illegible text]
- 83. [Illegible text]
- 84. [Illegible text]
- 85. [Illegible text]
- 86. [Illegible text]
- 87. [Illegible text]
- 88. [Illegible text]
- 89. [Illegible text]
- 90. [Illegible text]
- 91. [Illegible text]
- 92. [Illegible text]
- 93. [Illegible text]
- 94. [Illegible text]
- 95. [Illegible text]
- 96. [Illegible text]
- 97. [Illegible text]
- 98. [Illegible text]
- 99. [Illegible text]
- 100. [Illegible text]

[Faint, illegible text in the right margin]

[Faint, illegible text in the left margin]

SUBCHAPTER B. PROVISIONS APPLICABLE  
TO HOME-RULE MUNICIPALITY

§ 342.011. Fire Department

A home-rule municipality may provide for a fire department.

Acts 1987, 70th Leg., ch. 149, § 1, eff. Sept. 1, 1987.

§ 342.012. Designation of Fire Limits; Removal  
or Destruction of Structures

(a) A home-rule municipality may establish fire limits and may prescribe the kind and character of structures and other improvements erected within those limits.

(b) The municipality may provide for the erection of fireproof buildings within certain limits and may condemn dangerous buildings or other structures, dilapidated buildings, or buildings considered to increase the hazard of fire. The municipality may provide for the manner of the removal or destruction of those buildings or structures.

Acts 1987, 70th Leg., ch. 149, § 1, eff. Sept. 1, 1987.

[Sections 342.013 to 342.019 reserved for expansion]

SUBCHAPTER C. MUTUAL FIRE-  
PROTECTION AGREEMENTS

§ 342.020. Mutual Fire-Protection Agreements in  
Border Municipalities

(a) A municipality in this state that is located on the border between this state and the Republic of Mexico may make a mutual fire-protection agreement with its corresponding border municipality in the Republic of Mexico.

(b) Any fire fighter from a border municipality in this state who responds to a call for fire-fighting assistance from the corresponding border municipality in the Republic of Mexico under the terms of an agreement authorized by this section is performing the fire fighter's official duty for the purposes of Article III, Section 51-d, of the Texas Constitution.

Acts 1987, 70th Leg., ch. 149, § 1, eff. Sept. 1, 1987. Amended by Acts 1989, 71st Leg., ch. 1, § 87(u), eff. Aug. 23, 1989.

[Chapters 343 to 350 reserved for expansion]

SUBTITLE B. COUNTY PUBLIC SAFETY

CHAPTER 351. COUNTY JAILS  
AND LAW ENFORCEMENT

SUBCHAPTER A. COUNTY JAIL FACILITIES

Section  
351.001. Duty to Provide Jails; Location.

Section  
351.002. Jail Standards.  
351.003. Exemption.  
351.0036. Temporary Housing.  
351.0036. Housing of Correctional Program Participants.  
351.004. Structural and Maintenance Requirements.  
351.005. Segregation Requirements.  
351.006. Capacity Requirements.  
351.007. Space Requirements.  
351.008. Access to Day Room.  
351.009. Safety Vestibule.  
351.010. Sanitation and Health Requirements.  
351.011. Furnishings of Cells, Compartments, and Dormitories.  
351.012. Furnishings of Day Rooms.  
351.013. Bunks.  
351.014. Holding Insane Persons.  
351.015. Enforcement.

[Sections 351.016 to 351.030 reserved for expansion]

SUBCHAPTER B. INTERCOUNTY COOPERATION  
FOR JAIL FACILITIES

351.031. Contract.  
351.032. Location of Facility.  
351.033. Financing.  
351.034. Administrator.  
351.035. Duties.

[Sections 351.036 to 351.040 reserved for expansion]

SUBCHAPTER C. OPERATION OF COUNTY JAILS

351.041. Sheriff.  
351.0415. Commissary Operation by Sheriff.  
351.042. Jail Administrator in Bexar County.  
351.043. Federal Prisoners.  
351.044. Prisoner in Another County's Jail.

[Sections 351.045 to 351.060 reserved for expansion]

SUBCHAPTER D. CONTRACTS FOR LAW  
ENFORCEMENT SERVICES ON FEE  
BASIS

351.061. Authority to Contract.  
351.062. Fees.  
351.063. Services by Sheriff or County Official.  
351.064. Use of Deputies.  
351.065. Reports by Deputies.  
351.066. Duties in Area Served by Municipal Police.  
351.067. Municipal Approval of Contract Covering Area Within Municipality.

[Sections 351.068 to 351.080 reserved for expansion]

SUBCHAPTER E. COUNTY PARK RANGERS

351.081. Establishment in Populous Counties.  
351.082. Appointment of Chief.  
351.083. Law Enforcement Services in County Parks.  
351.084. Staff; Authority as Peace Officers.

[Sections 351.085 to 351.100 reserved for expansion]

SUBCHAPTER F. COUNTY CONTRACT WITH  
PRIVATE ENTITY FOR JAIL FACILITIES

351.101. Authority to Contract.  
351.102. Additional Authority to Contract.  
351.103. Contract Requirements.  
351.1035. Disadvantaged Businesses.  
351.104. Sovereign Immunity Inapplicable.

TABLE "C"

PROCEDURE FOR THE INTERNMENT OF PERSONNEL FROM THE UNITED STATES OF AMERICA INTO MEXICO

UNITED STATES OF MEXICO  
DEPARTMENT OF INTERIOR

OFFICE OF THE DIRECTOR  
MIGRATORY SERVICES  
NON-IMMIGRANT DIRECTOR

C I R C U L A R No. 15-M/90  
Mexico, F.D., October 9, 1990

TO THE CONSULS OF THE MEXICAN FOREIGN SERVICE DEPARTMENT OF FOREIGN RELATIONS CITY OF MEXICO

It is requested that NON-IMMIGRANTS shall be documented as such for A YEAR with the authorization of multiple entries and exits pursuant to Article 42 Item III (THIRD) of the General Population Law, all persons of United States or Canadian nationality who present evidence that they require to enter into Mexico within the operational phases of the "National Contingency Plan" to fight and control spills of hydrocarbons and other noxious substances in the sea regarding the cooperation agreement signed between the governments of the Federal Republic of Mexico and the United States of America on the pollution of the marine environment by spills of petroleum hydrocarbons and other noxious substances".

S I N C E R E L Y

THE GENERAL DIRECTOR OF MIGRATORY SERVICES

LIC. SUSANA TORRES HERNANDEZ

- c.c- To- Lic. Miguel Limon Rojas. - Assistant Secretary of the Interior. - Bucareli No. 99 First Floor. - Mexico City.
- c.c- To Admiral C.G. DEMN. - Gildaro Alarcon Lopez. - Mexican Navy, Chief of Naval Operations, General Coordinator of Technical Services, Director of Marine Ecology, Technical Director for their information. - Mexico City

TABLE 'C'

PROCEDURE FOR THE INTERNMENT OF PERSONNEL FROM THE UNITED STATES OF AMERICA INTO MEXICO

UNITED STATES OF MEXICO  
DEPARTMENT OF INTERIOR

OFFICE OF DIRECTOR  
MIGRATORY SERVICES  
NON-IMMIGRANT DIRECTOR

C I R C U L A R No. 14-M/90  
Mexico, F.D., October 9, 1990

DELEGATES AND ASSISTANT DELEGATES  
REGIONAL AGENCIES IN THE NORTH  
OF THE REPUBLIC

It is requested that NON-IMMIGRANTS shall be documented as such for A  
EAR with the authorization of multiple entries and exits pursuant to Article 42 Item III  
(HIRD) of the General Population Law, all persons of United States or Canadian nationality who  
present evidence that they require to enter into Mexico within the operational phases of the  
National Contingency Plan "to fight and control spills of hydrocarbons and other noxious  
substances in the sea regarding the cooperation agreement signed between the governments of  
the Federal Republic of Mexico and the United States of America on the pollution of the marine  
environment by spills of petroleum hydrocarbons and other noxious substances.

SINCERELY

THE GENERAL DIRECTOR OF MIGRATORY SERVICES

LIC. SUSANA TORRES HERNANDEZ

- c- To- Lic. Miguel Limon Rojas. - Assistant Secretary of the Interior. - Bucareli No.99  
1st Floor. - Mexico City.
- c- To Admiral C.G. DEMN. - Gilcero Alarcon Lopez. - Mexican Navy. Chief of Naval  
Operations, General Coordinator of Technical Services, Director of Marine Ecology, Technical  
Director for their information. - Mexico City



GENERAL POPULATION LAW

ARTICLE 42. III. -

A NON-IMMIGRANT IS AN ALIEN WHO, WITH A PERMIT ISSUED BY THE DEPARTMENT OF INTERIOR, SHALL ENTER THE COUNTRY TEMPORARILY WITHIN ONE OF THE FOLLOWING CHARACTERISTICS:

VISITORS, WHETHER TO PRACTICE SOME PROFITABLE ACTIVITY OR NOT, PROVIDED THAT SUCH ACTIVITY IS NOT ILICIT AND IT IS HONEST, WITH THE AUTHORIZATION TO REMAIN IN THE COUNTRY UP TO SIX MONTHS, SUBJECT TO ONE EXTENSION FOR THE SAME LENGTH OF TIME, EXCEPT IF DURING THEIR STAY THE VISITOR SHALL LIVE FROM RESOURCES BROUGHT FROM A FOREIGN COUNTRY OR FROM INCOME THAT THE VISITOR SHALL PRODUCE OR ANY REVENUES WHICH ORIGINATE ABROAD OR TO CARRY OUT SCIENTIFIC TECHNICAL ARTISTIC, SPORTS, OR SIMILAR ACTIVITIES IN WHICH TWO MORE EXTENSIONS MAY BE ALLOWED.

TABLE "D"

PROCEDURE FOR THE INTERNMENT OF EQUIPMENT AND MATERIAL  
FROM THE USA INTO MEXICO

DEPARTMENT OF FINANCE AND PUBLIC CREDIT  
TELEX            RADIO TELEX            SERVICE CIRCULAR

MESSAGE No.    DATE            TYPE OF SERVICE  
10682            OCTOBER 17, 1990    IMPORTANT

TO: ALL ADMINISTRATORS OF ALL CUSTOMS WITHIN THE MEXICAN  
REPUBLIC

Pursuant to Article 46, Item IX, 82, paragraph one and 116 Item XVIII of the Customs Law, it is hereby conveyed that when applications are received for the importation of materials and equipment to fight and control spills of hydrocarbons and other noxious substances in the sea, by Representatives certified as such by the Department of the Navy, all facilities shall be provided for the internment of the above equipment without requiring any bonds nor the payment of any taxes for importation or exportation. In the understanding that once such merchandise has been utilized for the purpose for which it was brought into the country it shall return to their place of origin without any alteration. It is also recommended that there shall be a vigilant supervision so that the items thus imported shall be only those that serve the above purpose.

Sincerely  
The Director General of Customs

Illegibly signed  
Enrique Guinea River

ANNEX V 9

TRAINING OBJECTIVES

1. - FOR THE MEXICAN REPUBLIC

IN ORDER FOR THE MEXICAN RESPONSE TEAM TO BE PREPARED FOR THE RESPONSE TO POLLUTION INCIDENTS AT SEA, THE GOVERNMENT WILL CONDUCT DRILLS PURSUANT TO THE "NATIONAL CONTINGENCY PLAN TO FIGHT AND CONTROL SPILLS OF PETROLEUM HYDROCARBONS AND OTHER NOXIOUS SUBSTANCES IN THE SEA". THIS CONTINGENCY PLAN PROVIDES FOR A RESPONSE ORGANIZATION TO ACT RAPIDLY TO REDUCE THE DAMAGES TO THE MARINE ENVIRONMENT. THESE DRILLS SHALL USE THE PERSONNEL RESOURCES AND MATERIALS AVAILABLE IN THE AREA WHERE THE DRILL WILL BE CONDUCTED. EQUIPMENT WILL BE EXERCISED TO ALLOW FOR FAMILIARIZATION WITH THE RESPONSE CAPABILITY IN THAT GEOGRAPHICAL AREA. THE MEXICAN RESPONSE TEAM WILL INVITE, IN THE CAPACITY OF OBSERVERS, MEMBERS OF THE RESPONSE TEAM OF THE USA.

2. - FOR THE USA

THE U.S. RESPONSE TEAM SHALL INVITE THE MEMBERS OF THE MEXICAN RESPONSE TEAM TO OBSERVE ALL OF THE DRILLS, EXERCISES AND TRAINING SESSIONS, INCLUDING THE ON-SCENE COORDINATOR/REGIONAL RESPONSE TEAM EXERCISES, AS THEY ARE SCHEDULED AND ANY OTHER EVENT THAT MAY BE OF INTEREST OR PROVIDE SOME BENEFIT FOR THE MEXICAN GOVERNMENT AND ITS RESPONSE TEAM.

DUE TO REGULATIONS IN EXISTENCE, THE UNITED STATES OF AMERICA CANNOT PROVIDE DIRECT TRAINING TO THE GOVERNMENT OF MEXICO AND CAN ONLY INVITE ITS REPRESENTATIVES IN THE CAPACITY OF OBSERVERS TO ANY TRAINING THAT MAY BE REQUIRED AND SUCH INVITATION MUST BE CHANNLED BY REGULAR OFFICIAL CHANNELS.

**APPENDIX K**  
**REVISION DIARY**

<b>DIARIO DE REVISIONES</b>	
DESCRIPTION	DATE
1. Original Signing of the Sister City Plan	December 21, 1998