

# U.S. EPA's Local Climate and Energy Webcast Series

Presents:

## Resource Conservation and Recovery Strategies for Greenhouse Gas Emissions Reductions

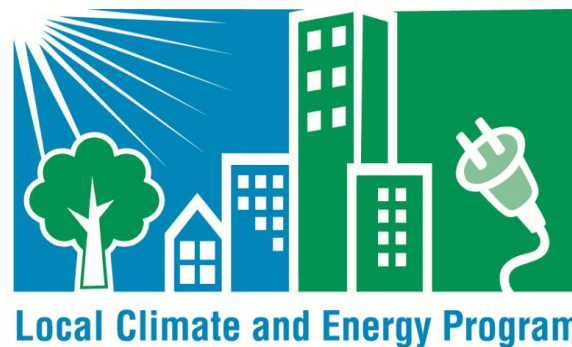
Telephone call-in number: (855) 766-8628

**We will start in a few minutes. Thank you for joining us.**



**Local Climate and Energy Program**





# **Resource Conservation and Recovery Strategies for Greenhouse Gas Emissions Reductions**

U.S. EPA Local Climate and Energy Program

Thursday, November 15, 2012

2:30 PM ET – 4:00 PM ET

Telephone call-in number: (855) 766-8628

# Happy America Recycles Day!

---



<http://americarecyclesday.org/>

# Webcast Agenda

---



- **Welcome and Introduction**

Emma Zinsmeister, U.S. EPA Local Climate and Energy Program

- **Connecting Climate and Waste to Sustainable Materials Management**

Shannon Davis, EPA Region 9

- **Use Reusables: Fundamentals of Reusable Transport Packaging**

Justin Lehrer, Program Manager, StopWaste.Org

- **Integrating Solid Waste Management into Kansas City's Climate Protection Plan**

Dennis Murphey, Chief Environmental Officer, Kansas City, MO

- **Q and A Session**

- **Optional Feedback**

# GoTo Webinar Software Logistics

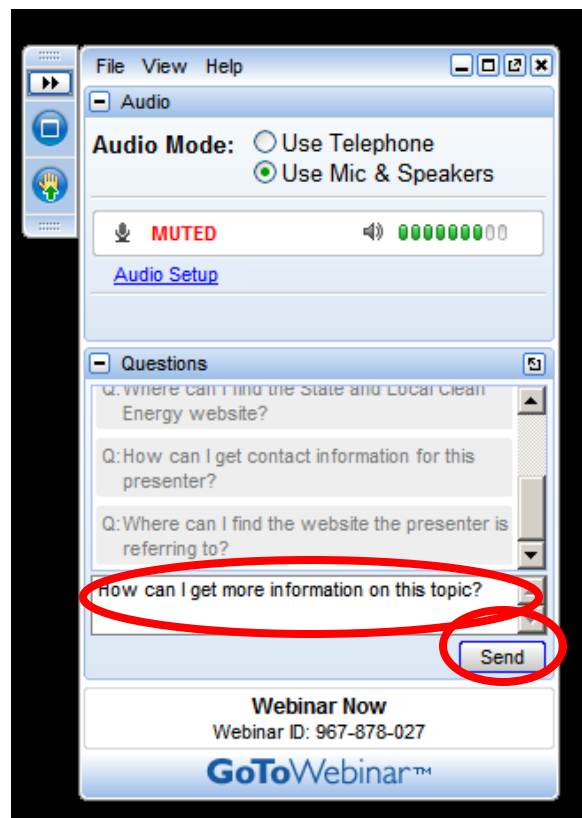
---



- You will be muted throughout this webcast to minimize background noise. You'll be able to submit questions and comments in writing.
- PDF and audio files of today's session will be made available for download in a few weeks at:
  - [www.epa.gov/statelocalclimate/web-podcasts/index.html](http://www.epa.gov/statelocalclimate/web-podcasts/index.html)
- Throughout the webcast, if you have technical difficulties, please contact Wendy Jaglom from ICF at: [Wendy.Jaglom@icfi.com](mailto:Wendy.Jaglom@icfi.com)

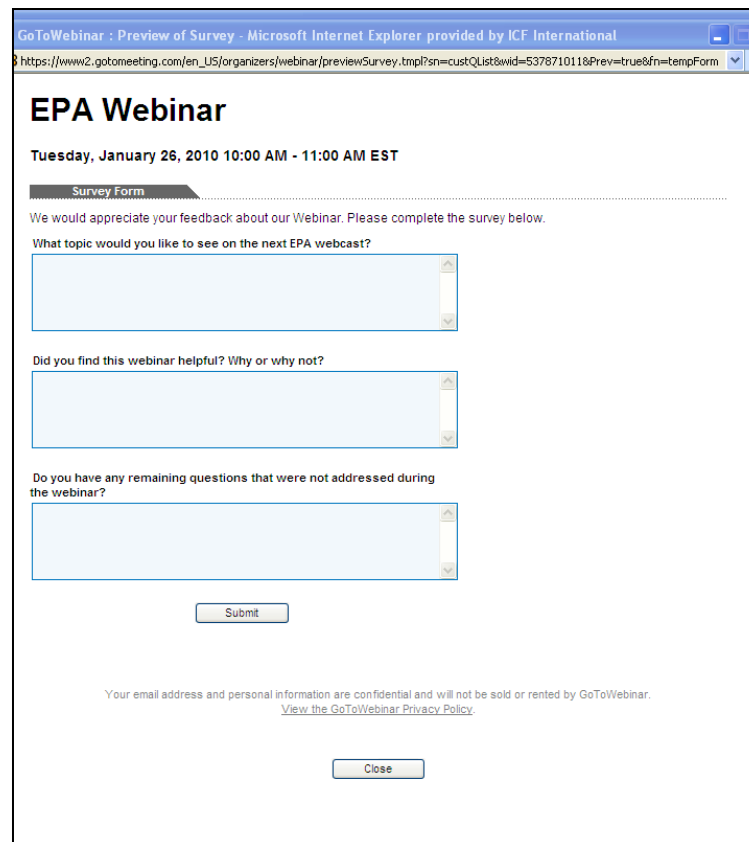
# Questions (GoTo Meeting)

- If you have a question, submit through the question pane.
- We will compile these questions and ask them during the Q&A session.
- Please include the name of the presenter you would like to answer your question.



# Optional Feedback (GoTo Meeting)

- A pop-up window will appear once you exit GoTo Meeting.
- Please take a few minutes to respond to the optional questions and provide your feedback.



The screenshot shows a web browser window titled "GoToWebinar : Preview of Survey - Microsoft Internet Explorer provided by ICF International". The address bar shows a URL from gotomeeting.com. The main content area is titled "EPA Webinar" and "Tuesday, January 26, 2010 10:00 AM - 11:00 AM EST". Below this is a "Survey Form" section with the text: "We would appreciate your feedback about our Webinar. Please complete the survey below." The first question is "What topic would you like to see on the next EPA webcast?" with a text input field. The second question is "Did you find this webinar helpful? Why or why not?" with a text input field. The third question is "Do you have any remaining questions that were not addressed during the webinar?" with a text input field. At the bottom of the form is a "Submit" button. Below the form, there is a privacy notice: "Your email address and personal information are confidential and will not be sold or rented by GoToWebinar. [View the GoToWebinar Privacy Policy.](#)" and a "Close" button.

# U.S. EPA Local Climate and Energy Program: Goals

---



## **Help communities (e.g., tribal governments, regional governments, cities, counties, etc.):**

- Reduce greenhouse gas emissions while achieving sustainability goals
- Identify and work with expert partners and programs
- Understand, integrate, and maximize multiple benefits in planning and designing programs
  - Air quality improvements
  - Cost savings
  - Energy security and reliability
  - Economic development
  - Public health
  - Quality of life



# U.S. EPA Local Climate and Energy Program: Resources



## 1. Climate Showcase Communities (CSC)

- 50 pilot communities; \$20M
- Create, support, and showcase replicable models of sustainable community action [www.epa.gov/statelocalclimate/local/showcase](http://www.epa.gov/statelocalclimate/local/showcase)

## 2. Key Guidance and Tools

- Comprehensive Local Climate and Energy Website [www.epa.gov/statelocalclimate](http://www.epa.gov/statelocalclimate)
- **Local Government Climate and Energy Strategy Series** [www.epa.gov/climateshowcase](http://www.epa.gov/climateshowcase)
- Linkages to technical support programs

## 3. Peer Exchanges

- Annual CSC workshop
- Local Climate and Energy Webcast Series [www.epa.gov/statelocalclimate/web-podcasts/local-webcasts.html](http://www.epa.gov/statelocalclimate/web-podcasts/local-webcasts.html)
- Email newsletters [www.epa.gov/statelocalclimate/newsletters/index.html](http://www.epa.gov/statelocalclimate/newsletters/index.html)

# Local Government Climate and Energy Strategy Series



Guides to Developing and Implementing GHG Reduction Programs through:

## Energy Efficiency

- K-12 Schools
- Affordable Housing
- Local Government Operations
- Product Procurement
- Combined Heat & Power
- *Water/Wastewater Facilities (2013)*

## Transportation

- Transportation Control Measures

## Community Planning & Design

- Smart Growth

## Solid Waste & Materials Management

- **Resource Conservation & Recovery**

## Renewable Energy

- Green Power Procurement
- On-Site Renewable Energy
- Landfill Gas Energy

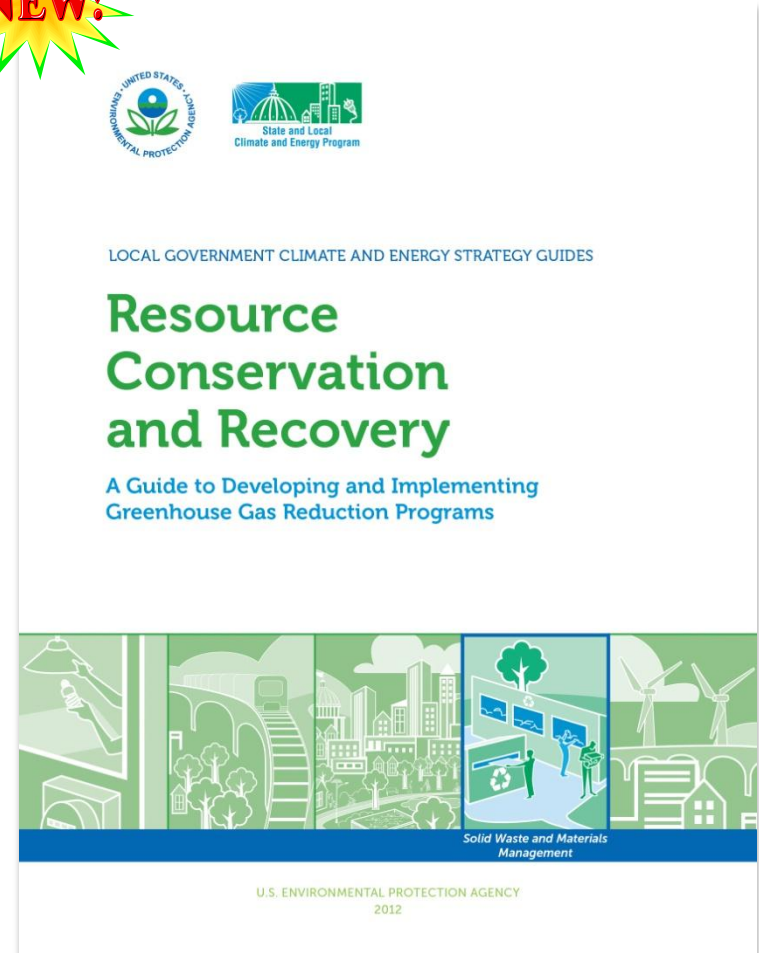


[www.epa.gov/statelocalclimate/resources/strategy-guides.html](http://www.epa.gov/statelocalclimate/resources/strategy-guides.html)

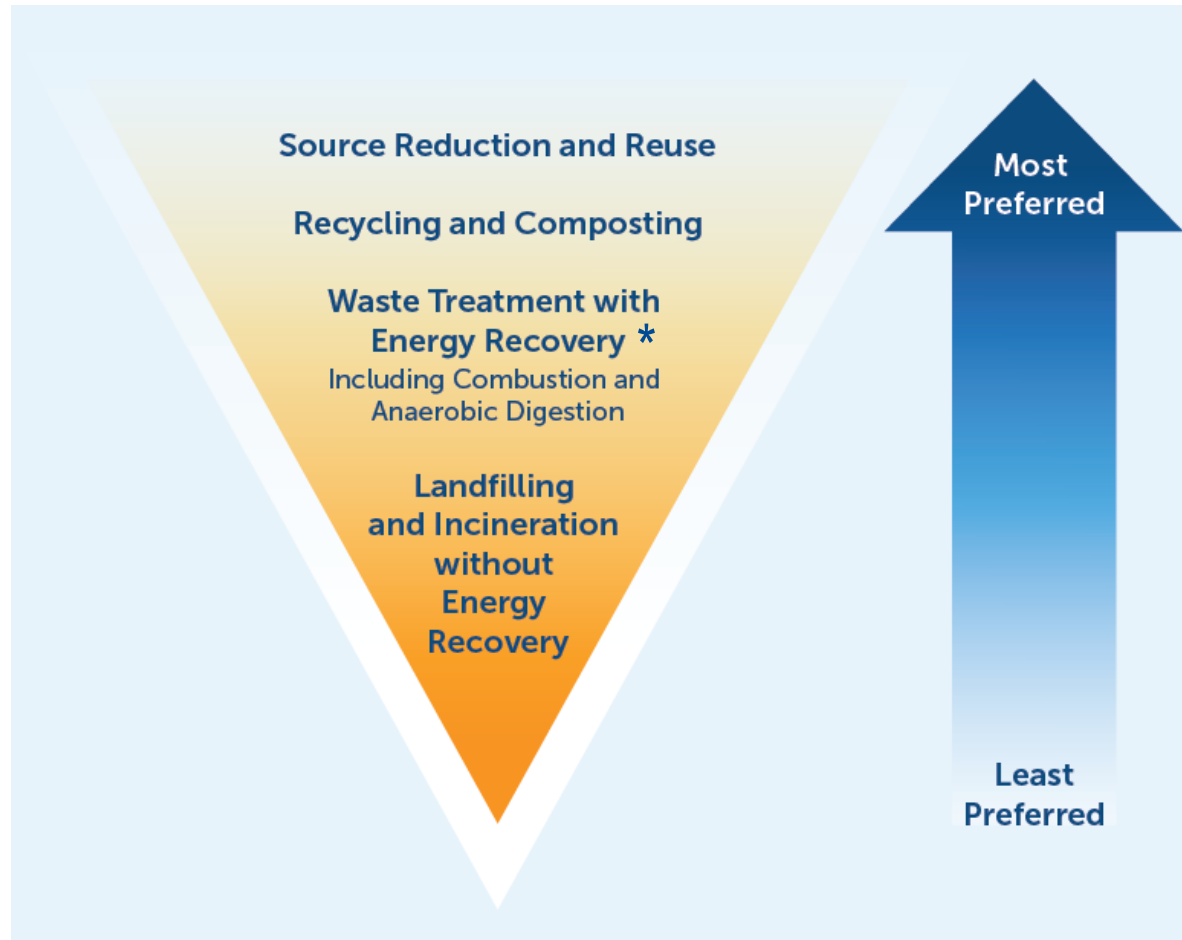
# Resource Conservation and Recovery: A Guide to Developing and Implementing Greenhouse Gas Reduction Programs



- Comprehensive information for local government staff and policy makers on:
  - Environmental, economic, and human health benefits
  - **Source reduction and waste diversion practices and technologies**
  - Key participants
  - Policy mechanisms for initiating programs
  - Implementation strategies for success
  - Costs and funding opportunities
- Key features:
  - Case studies and examples from communities across the United States
  - Links to technical resources, analytical tools, and sources of funding
- Available at:  
[www.epa.gov/statelocalclimate/documents/pdf/ResourceConservGuide.pdf](http://www.epa.gov/statelocalclimate/documents/pdf/ResourceConservGuide.pdf)



# Strategies Covered in the Guide Follow EPA's Solid Waste Management Hierarchy



*\*See separate guide on landfill gas energy for more details on this strategy.*

# Contact Information

---



Emma Zinsmeister

Local Climate Strategy Analyst

U.S. EPA Local Climate and Energy Program

[zinsmeister.emma@epa.gov](mailto:zinsmeister.emma@epa.gov)