

FINAL
U.S. ENVIRONMENTAL PROTECTION AGENCY
Region VI



Air Monitoring Summary

Camp Minden North

Start Time: 07-8-2016 1800 - End Time: 07-9-2016 1800

July 9, 2016 – EPA monitored for seven ambient air pollutants over a 24 hour period at the Camp Minden North air monitoring location. The seven pollutants included carbon monoxide, carbon dioxide, nitrogen oxide, nitrogen dioxide, nitrogen oxides, sulfur dioxide, and fine particulates. Over the 24 hour period, each of these pollutants were detected below EPA’s National Ambient Air Quality Standards or the action benchmark when an air quality standard had not been previously established.

Below is a summary of Camp Minden Air Monitoring Data collected at the location referenced above. The table contains a detailed listing of the following:

- 1 Average reading of each analyte from July 8, 2016 1800 through July 9, 2016, 2016 1800
- 2 Highest measurement of each analyte from July 8, 2016 1800 through July 9, 2016 1800

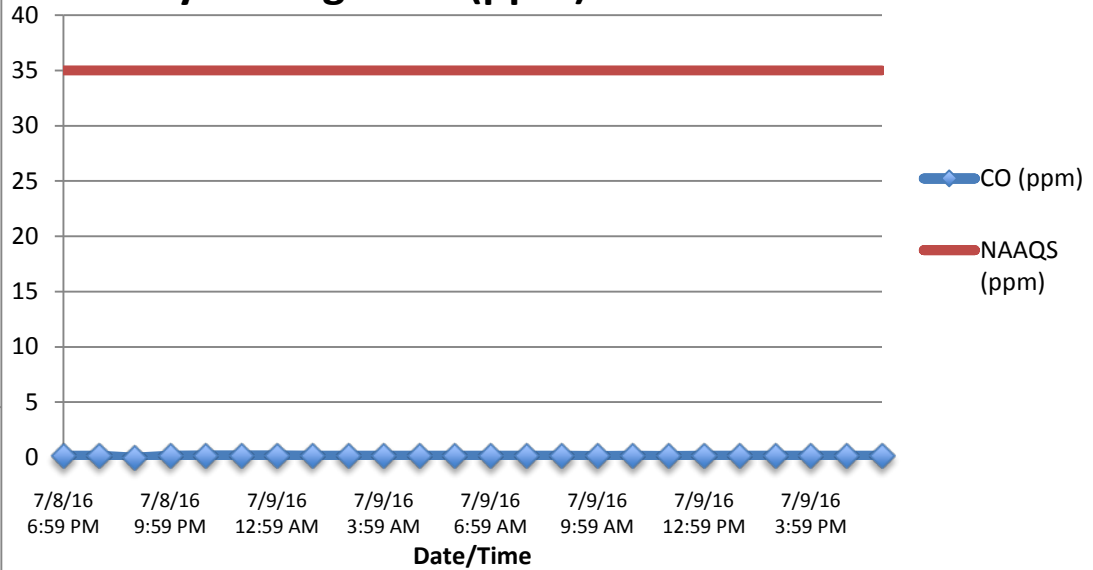
National Ambient Air Quality Standards (NAAQS) of criteria pollutants (CO, NO₂, SO₂, and PM_{2.5}) are listed with specific time frames and calculation formulas. Please visit NAAQS website for more in-depth information on how these are calculated - <https://www.epa.gov/criteria-air-pollutants/naqs-table>.

** Note: PM_{2.5} was captured in 60-min averages. All other analytes were captured in 1-min averages.

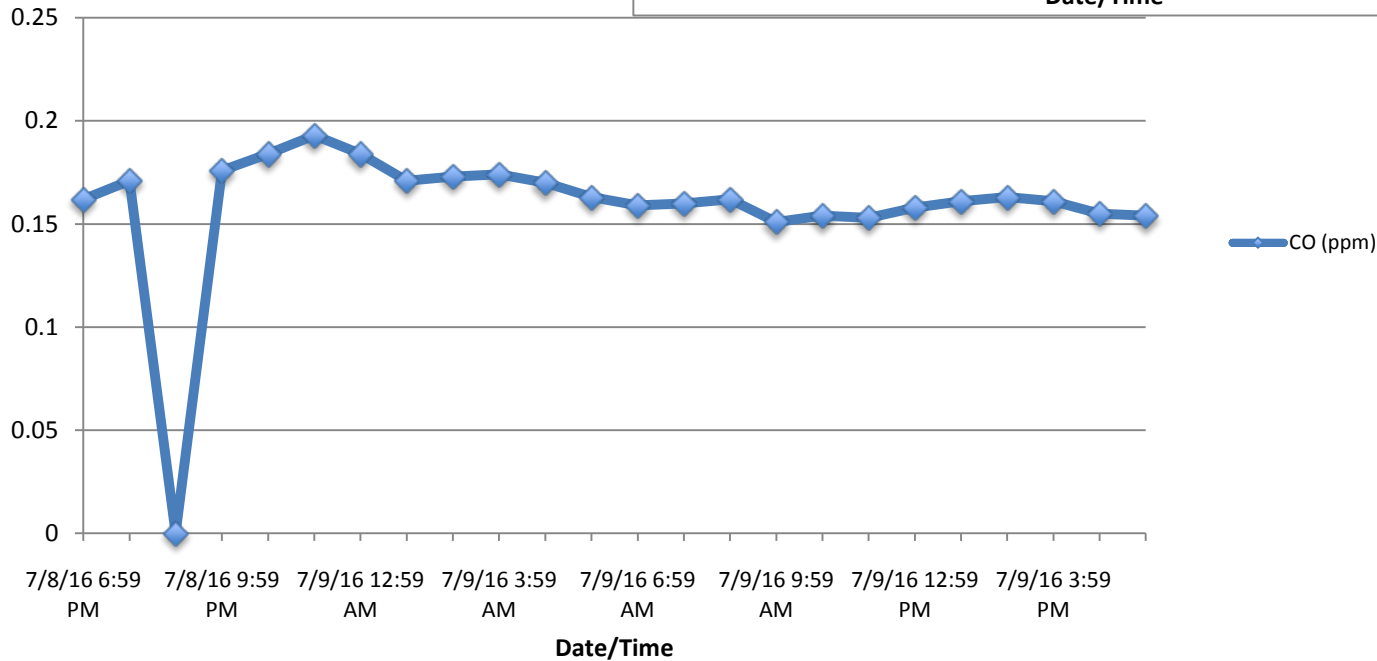
Summary for 9 July 2016 at Camp Minden North

Analyte	Highest Hourly Average Measurement	Highest Measurement	Units	NAAQS Standard
CO	0.193	0.26	ppm	35 (1-hour)
CO ₂	526.8	590.6	ppm	For Monitoring Only
NO	1.2	17.8	ppb	For Monitoring Only
NO ₂	1.7	6.9	ppb	100 (1-hour)
NO _X	2.8	24.7	ppb	100 (1-hour)
SO ₂	0.4	0.6	ppb	75 (1-hour)
Analyte	Average 24-hour Measurement	Highest Measurement	Units	NAAQS Standard
PM 2.5	17.3	34.8	ug/m ³	35 (24-hour)

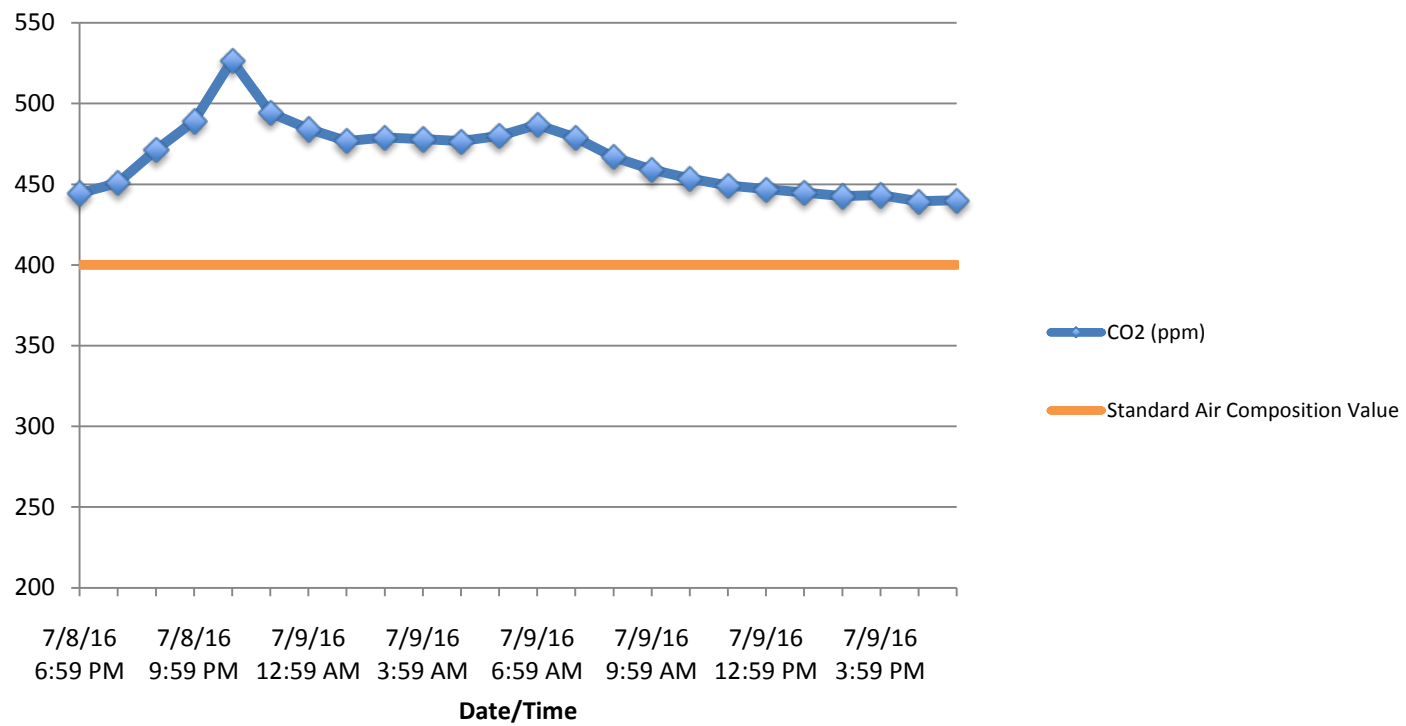
Hourly Averages CO (ppm)



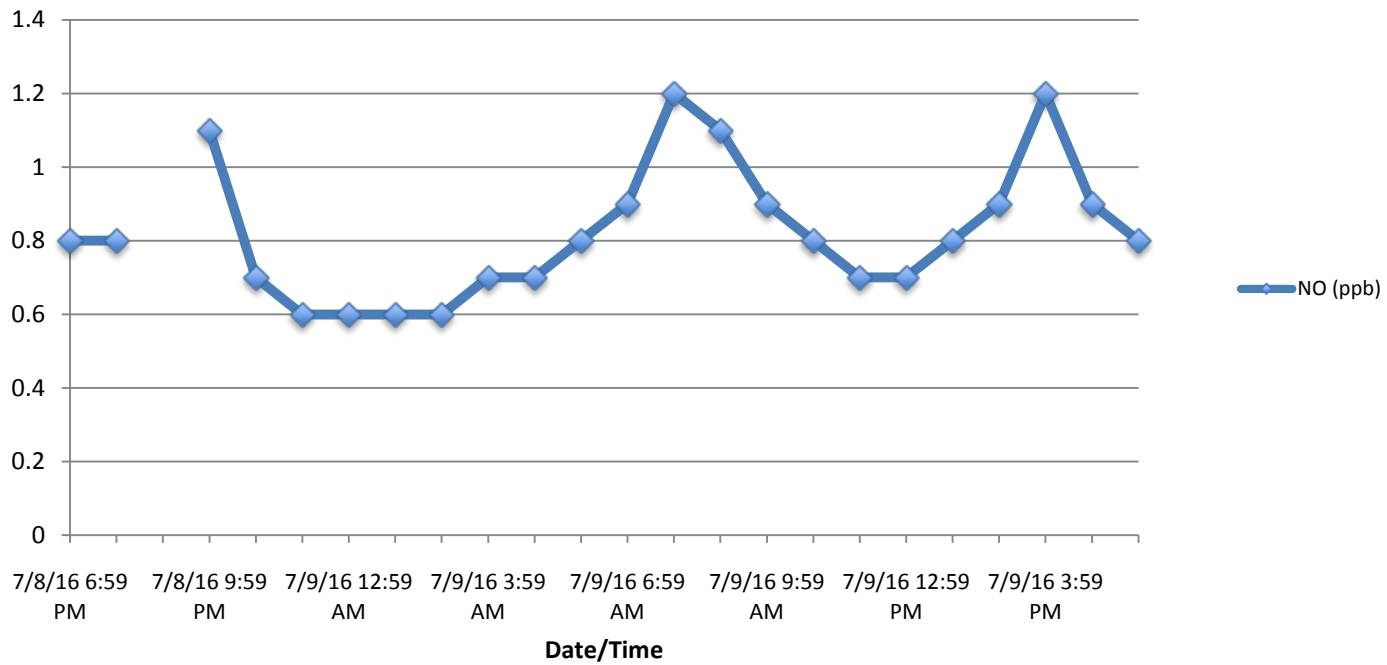
Hourly Averages CO (ppm) NAAQS 35 ppm



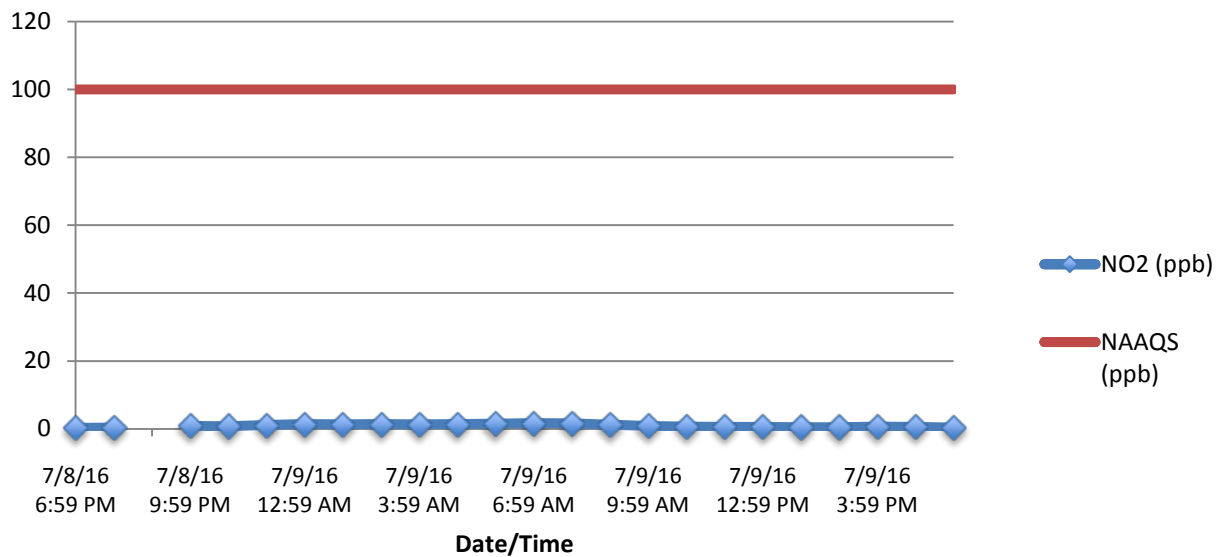
Hourly Averages CO2 (ppm) For Monitoring Only



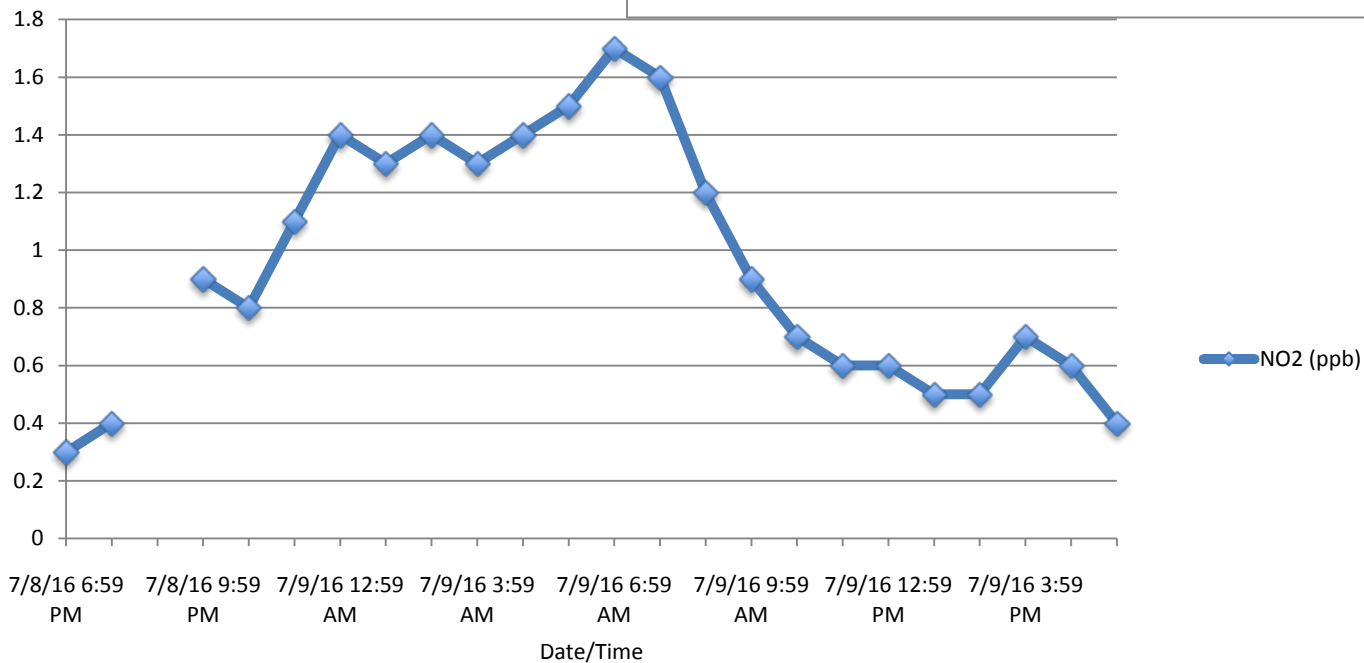
Hourly Averages NO (ppb) For Monitoring Only



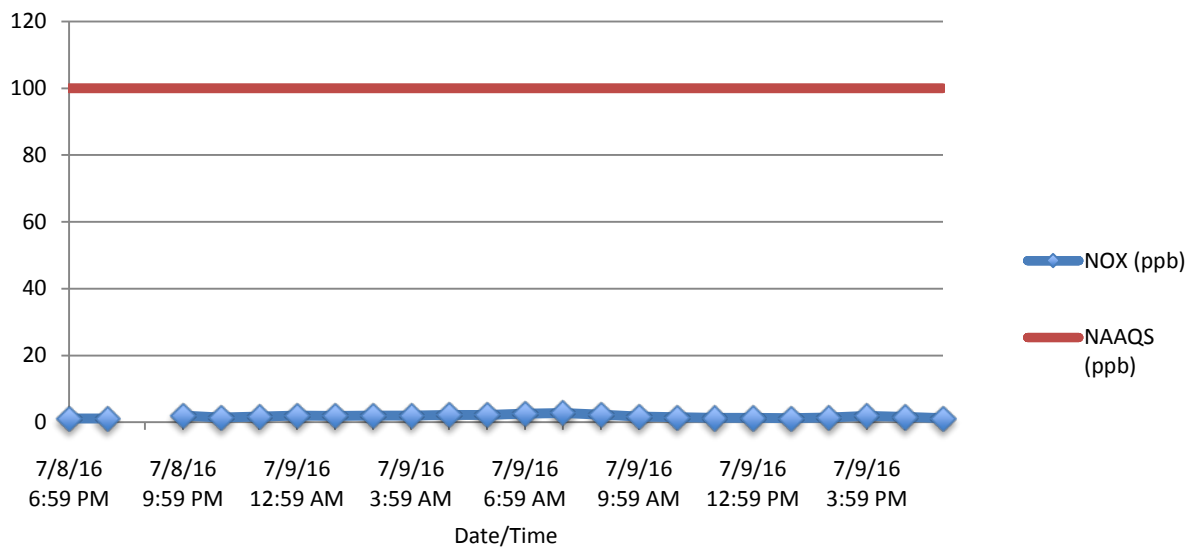
Hourly Averages NO2 (ppb)



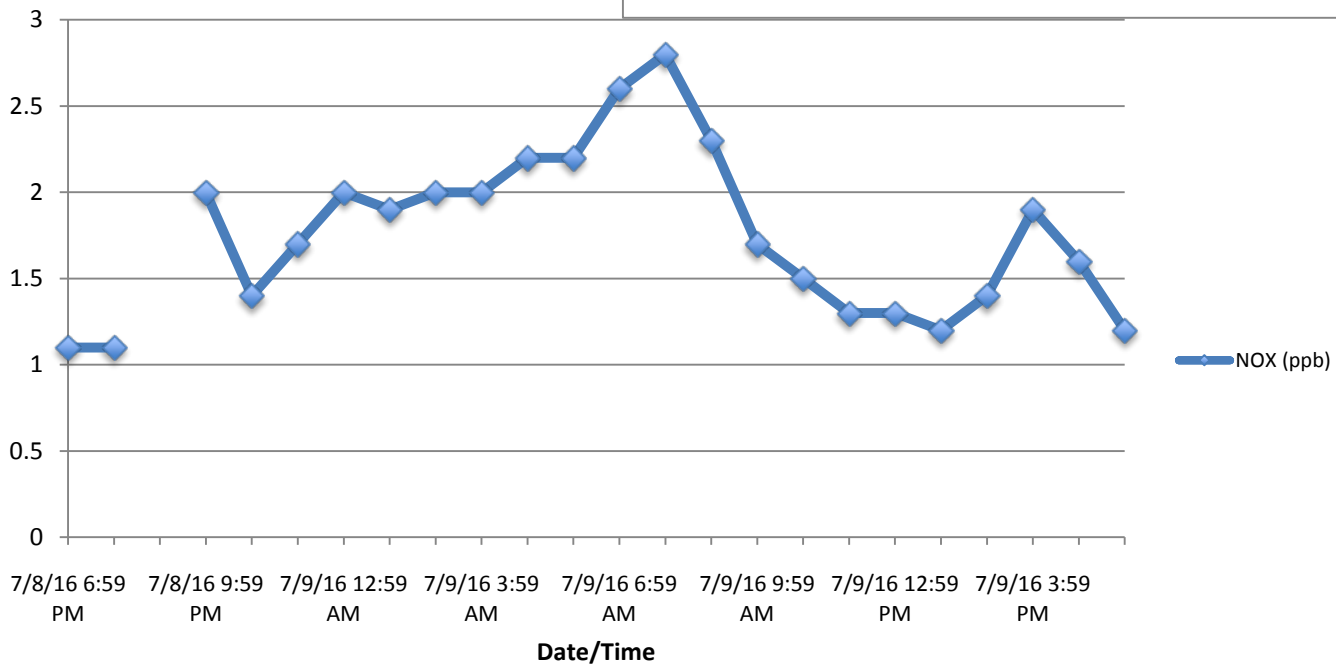
Hourly Averages NO2 (ppb) NAAQS 100 ppb



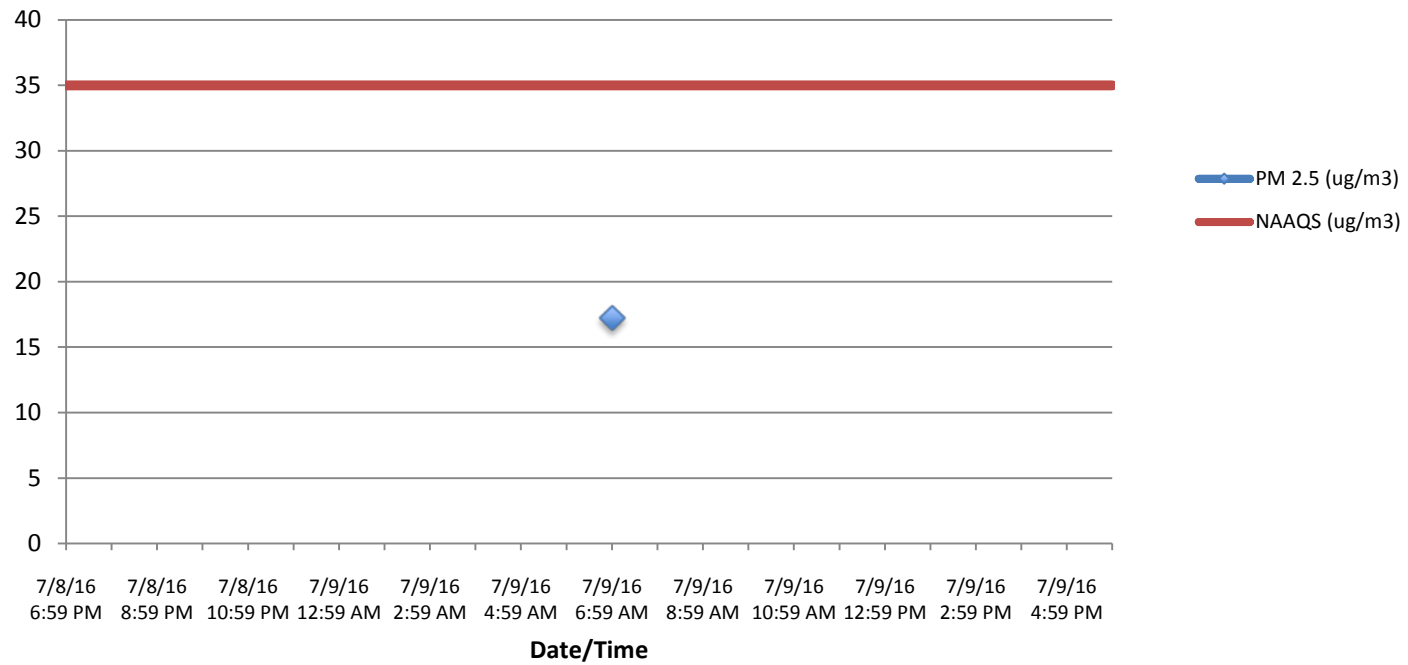
Hourly Averages NOX (ppb)



Hourly Averages NOX (ppb) NAAQS 100 ppb



24 Hour Average PM 2.5 (ug/m3) NAAQS 35 ug/m3



Hourly Averages PM 2.5 (ug/m3)

