

Final Technical Support Document

Kansas

Area Designations for the 2010 SO₂ Primary National Ambient Air Quality Standard

Summary

Pursuant to section 107(d) of the Clean Air Act (CAA), the U.S. Environmental Protection Agency (EPA, or the Agency) must designate areas as either “unclassifiable,” “attainment,” or “nonattainment” for the 2010 1-hour sulfur dioxide (SO₂) primary national ambient air quality standard (NAAQS). Section 107(d) of the CAA defines a nonattainment area as one that does not meet the NAAQS or that contributes to a NAAQS violation in a nearby area, an attainment area as any area other than a nonattainment area that meets the NAAQS, and an unclassifiable area as any area that cannot be classified on the basis of available information as meeting or not meeting the NAAQS.

July 2, 2016, is the deadline established by the U.S. District Court for the Northern District of California for the EPA to designate certain areas. This deadline is the first of three deadlines established by the court for the EPA to complete area designations for the 2010 SO₂ NAAQS. This deadline applies to certain areas in Kansas because three emission sources meet the conditions of the court’s order.

Kansas submitted updated recommendations on September 18, 2015. Table 1 below lists Kansas’s recommendations and identifies the counties in Kansas that the EPA is designating in order to meet the July 2, 2016, court-ordered deadline. These final designations are based on an assessment and characterization of air quality through ambient air quality data, air dispersion modeling, other evidence and supporting information, or a combination of the above.

Table 1 – Kansas’s Recommended and the EPA’s Final Designations

Area	State’s Recommended Area Definition	State’s Recommended Designation	EPA’s Final Area Definition	EPA’s Final Designation
KCP&L La Cygne Generating Station	All of Linn County, Kansas	Attainment	Same as State’s Recommendation ¹ (Linn County, KS)	Unclassifiable/Attainment ²

¹ EPA notified the State of Kansas on February 16, 2016, that our intended area definition consisted of the entirety of Linn County, Kansas. Our final area definition is the same as our intended area definition.

² EPA notified the State of Kansas on February 16, 2016, that our intended designation for the KCP&L La Cygne Generating Station area was unclassifiable/attainment. Our final designation is the same as our intended designation.

BPU Nearman Creek Station	All of Wyandotte County, Kansas	Unclassifiable/Attainment	Same as State's Recommendation ³ (Wyandotte County, KS)	Unclassifiable ⁴
Wester Energy – Tecumseh Energy Center	All of Shawnee County, Kansas	Unclassifiable	Same as State's Recommendation ⁵ (Shawnee County, KS)	Unclassifiable ⁶

Background

On June 3, 2010, the EPA revised the primary (health based) SO₂ NAAQS by establishing a new 1-hour standard at a level of 75 parts per billion (ppb) which is met at an ambient air quality monitoring site when the 3-year average of the 99th percentile of 1-hour daily maximum concentrations does not exceed 75 ppb. This NAAQS was published in the *Federal Register* on June 22, 2010 (75 FR 35520), and is codified at 40 CFR 50.17. The EPA determined this is the level necessary to protect public health with an adequate margin of safety, especially for children, the elderly, and those with asthma. These groups are particularly susceptible to the health effects associated with breathing SO₂. The two prior primary standards of 140 ppb evaluated over 24 hours, and 30 ppb evaluated over an entire year, codified at 40 CFR 50.4, remain applicable.⁷ However, the EPA is not currently designating areas on the basis of either of these two primary standards. Similarly, the secondary standard for SO₂, set at 500 ppb evaluated over 3 hours, codified at 40 CFR 50.5, has not been revised, and the EPA is also not currently designating areas on the basis of the secondary standard.

General Approach and Schedule

Section 107(d) of the CAA requires that not later than 1 year after promulgation of a new or revised NAAQS, State governors must submit their recommendations for designations and

³ EPA notified the State of Kansas on February 16, 2016, that our intended area definition consisted of the entirety of Wyandotte County, Kansas. Our final area definition is the same as our intended area definition.

⁴ EPA notified the State of Kansas on February 16, 2016, that our intended designation for the BPU Nearman Creek Station area was unclassifiable. Our final designation is the same as our intended designation.

⁵ EPA notified the State of Kansas on February 16, 2016, that our intended area definition consisted of the entirety of Shawnee County, Kansas. Our final area definition is the same as our intended area definition.

⁶ EPA notified the State of Kansas on February 16, 2016, that our intended designation for the Westar Energy – Tecumseh Energy Center area was unclassifiable. Our final designation is the same as our intended designation.

⁷ 40 CFR 50.4(e) provides that the two prior primary NAAQS will no longer apply to an area 1 year after its designation under the 2010 NAAQS, except that for areas designated nonattainment under the prior NAAQS as of August 22, 2010, and areas not meeting the requirements of a SIP Call under the prior NAAQS, the prior NAAQS will apply until that area submits and EPA approves a SIP providing for attainment of the 2010 NAAQS. No Kansas areas were designated nonattainment for the prior NAAQS on the effective date of the 2010 NAAQS, nor were any subject to a SIP under the prior NAAQS.

boundaries to EPA. Section 107(d) also requires the EPA to provide notification to States no less than 120 days prior to promulgating an initial area designation that is a modification of a State's recommendation. If a State does not submit designation recommendations, the EPA may promulgate the designations that it deems appropriate without prior notification to the State, although it is our intention to provide such notification when possible. If a State or tribe disagrees with the EPA's intended designations, it is given an opportunity within the 120-day period to demonstrate why any proposed modification is inappropriate. The EPA is required to complete designations within 2 years after promulgation of a new or revised NAAQS, unless EPA determines that sufficient information is not available, in which case the deadline is extended to 3 years. The 3-year deadline for the revised SO₂ NAAQS was June 2, 2013.

On August 5, 2013, the EPA published a final rule establishing air quality designations for 29 areas in the United States for the 2010 SO₂ NAAQS, based on recorded air quality monitoring data from 2009 – 2011 showing violations of the NAAQS (78 FR 47191). In that rulemaking, the EPA committed to address, in separate future actions, the designations for all other areas for which the Agency was not yet prepared to issue designations.

Following the initial August 5, 2013, designations, three lawsuits were filed against the EPA in different U.S. District Courts, alleging the Agency had failed to perform a nondiscretionary duty under the CAA by not designating all portions of the country by the June 2, 2013 deadline. In an effort intended to resolve the litigation in one of those cases, plaintiffs, Sierra Club and the Natural Resources Defense Council, and the EPA filed a proposed consent decree with the U.S. District Court for the Northern District of California. On March 2, 2015, the court entered the consent decree and issued an enforceable order for the EPA to complete the area designations according to the court-ordered schedule.

According to the court-ordered schedule, the EPA must complete the remaining designations by three specific deadlines. By no later than July 2, 2016 (16 months from the court's order), the EPA must designate two groups of areas: (1) areas that have newly monitored violations of the 2010 SO₂ NAAQS, and (2) areas that contain any stationary sources that had not been announced as of March 2, 2015, for retirement and that, according to the EPA's Air Markets Database, emitted in 2012 either (i) more than 16,000 tons of SO₂, or (ii) more than 2,600 tons of SO₂ with an annual average emission rate of at least 0.45 pounds of SO₂ per one million British thermal units (lbs SO₂/mmBTU). Specifically, a stationary source with a coal-fired unit that, as of January 1, 2010, had a capacity of over 5 megawatts and otherwise meets the emissions criteria, is excluded from the July 2, 2016, deadline if it had announced through a company public announcement, public utilities commission filing, consent decree, public legal settlement, final state or federal permit filing, or other similar means of communication, by March 2, 2015, that it will cease burning coal at that unit.

The last two deadlines for completing remaining designations are December 31, 2017, and December 31, 2020. The EPA has separately promulgated requirements for state and other air agencies to provide additional monitoring or modeling information on a timetable consistent with these designation deadlines. We expect this information to become available in time to help inform these subsequent designations. These requirements were promulgated on August 21, 2015

(80 FR 51052), in a rule known as the SO₂ Data Requirements Rule (DRR), codified at 40 CFR part 51 subpart BB.

Updated designations guidance was issued by the EPA through a March 20, 2015, memorandum from Stephen D. Page, Director, U.S. EPA, Office of Air Quality Planning and Standards, to Air Division Directors, U.S. EPA Regions 1-10. This memorandum supersedes earlier designation guidance for the 2010 SO₂ NAAQS, issued on March 24, 2011, and it identifies factors that the EPA intends to evaluate in determining whether areas are in violation of the 2010 SO₂ NAAQS. The guidance also contains the factors the EPA intends to evaluate in determining the boundaries for all remaining areas in the country, consistent with the court's order and schedule. These factors include: 1) Air quality characterization via ambient monitoring or dispersion modeling results; 2) Emissions-related data; 3) Meteorology; 4) Geography and topography; and 5) Jurisdictional boundaries. This guidance was supplemented by two non-binding technical assistance documents intended to assist states and other interested parties in their efforts to characterize air quality through air dispersion modeling or ambient air quality monitoring for sources that emit SO₂. Notably, the EPA's documents titled, "SO₂ NAAQS Designations Modeling Technical Assistance Document" (Modeling TAD) and "SO₂ NAAQS Designations Source-Oriented Monitoring Technical Assistance Document" (Monitoring TAD), were available to states and other interested parties. Both of these TADs were most recently updated in February 2016.

Based on complete, quality assured and certified ambient air quality data collected between 2013 and 2015, no violations of the 2010 SO₂ NAAQS have been recorded at ambient air quality monitors in any undesignated part of Kansas. However, there are three sources in the State meeting the emissions criteria of the consent decree for which the EPA must complete designations by July 2, 2016. In this final technical support document, the EPA discusses its review and technical analysis of Kansas' updated recommendations for the areas that we must designate. The EPA also discusses any intended and final modifications from the State's recommendation based on all available data before us.

The following are definitions of important terms used in this document:

- 1) 2010 SO₂ NAAQS – the primary NAAQS for SO₂ promulgated in 2010. This NAAQS is 75 ppb, based on the 3-year average of the 99th percentile of the annual distribution of daily maximum 1-hour average concentrations. See 40 CFR 50.17.
- 2) Attaining monitor – an ambient air monitor meeting all methods, quality assurance, and siting criteria and requirements whose valid design value is under 75 ppb, based on data analysis conducted in accordance with Appendix T of 40 CFR part 50.
- 3) Design Value – a statistic computed according to the data handling procedures of the NAAQS (in 40 CFR part 50 Appendix T) that, by comparison to the level of the NAAQS, indicates whether the area is violating the NAAQS.
- 4) Designated nonattainment area – an area which the EPA has determined has violated the 2010 SO₂ NAAQS or contributed to a violation in a nearby area. A nonattainment designation reflects considerations of the state's recommendations and all of the information discussed in this document. The EPA's decision is based on all available information including the most recent 3 years of air quality monitoring data, available modeling analyses, and any other relevant information.

- 5) Designated unclassifiable area – an area for which the EPA cannot determine based on all available information whether or not it meets the 2010 SO₂ NAAQS.
- 6) Designated unclassifiable/attainment area – an area which the EPA has determined to have sufficient evidence to find either is attaining or is likely to be attaining the NAAQS. The EPA’s decision is based on all available information including the most recent 3 years of air quality monitoring data, available modeling analyses, and any other relevant information.
- 7) Modeled violation – a violation based on air dispersion modeling.
- 8) Recommended attainment area – an area a state or tribe has recommended that the EPA designate as attainment.
- 9) Recommended nonattainment area – an area a state or tribe has recommended that the EPA designate as nonattainment.
- 10) Recommended unclassifiable area – an area a state or tribe has recommended that the EPA designate as unclassifiable.
- 11) Recommended unclassifiable/attainment area – an area a state or tribe has recommended that the EPA designate as unclassifiable/attainment.
- 12) Violating monitor – an ambient air monitor meeting all methods, quality assurance, and siting criteria and requirements whose valid design value exceeds 75 ppb, based on data analysis conducted in accordance with Appendix T of 40 CFR part 50.

Technical Analysis for the La Cygne Generating Station, Kansas Area

Final Designation Summary

After careful evaluation of the state's recommendation and supporting information, as well as all available relevant information, the EPA designates the area around the La Cygne Generating Station as unclassifiable/attainment for the 2010 SO₂ NAAQS. Specifically, the boundaries are comprised of the entirety of Linn County, Kansas.

The unclassifiable/attainment designation is based on, among other things a modeling analysis that the State of Kansas provided to the EPA for the La Cygne Station using federally enforceable emission limits demonstrated attainment and this modeling followed the recommended EPA modeling TAD for designation purposes.

Introduction

The Linn County, Kansas, area contains a stationary source that, according to the EPA's Air Markets Database, emitted in 2012 either more than 16,000 tons of SO₂ or more than 2,600 tons of SO₂ and had an annual average emission rate of at least 0.45 pounds of SO₂ per one million British thermal units (lbs SO₂/mmBTU). Specifically, in 2012, the Kansas City Power & Light's (KCP&L) La Cygne Generating Station emitted 16,235 tons of SO₂ and had an emissions rate of 0.36 lbs SO₂/mmBTU. As of March 2, 2015, this stationary source had not met the criteria for being "announced for retirement." Pursuant to the March 2, 2015, court-ordered schedule, the EPA must designate the area surrounding this facility by July 2, 2016.

In its September 9, 2015 submission, Kansas recommended that the area surrounding the KCP&L La Cygne Generating Station, specifically Linn County, Kansas be designated as attainment based on an assessment and characterization of air quality from the facility and other nearby sources which may have a potential impact in the area of analysis where maximum concentrations of SO₂ are expected. This assessment and characterization was performed using air dispersion modeling software, specifically using AERMOD, analyzing allowable emissions.

On February 16, 2016, the EPA notified Kansas that we intended to designate the La Cygne Generating Station, Kansas, area as unclassifiable/attainment. Additionally, we informed Kansas that our intended boundaries for the unclassifiable/attainment area consisted of the entirety of Linn County, Kansas. Our intended designation and associated boundaries were based on, among other things, the modeling analysis that the State of Kansas provided to EPA. The modeling analysis submitted by Kansas for the La Cygne Station using federally enforceable emission limits demonstrated attainment and this modeling followed the recommended EPA modeling TAD for designation purposes. Detailed rationale, analyses, and other information supporting our intended designation for this area can be found in the preliminary technical support document for Kansas, and this document along with all others related to this rulemaking can be found in Docket ID EPA-HQ-OAR-2014-0464.

Assessment of New Information

In our February 16, 2016, notification to Kansas regarding our intended unclassifiable/attainment designation for the La Cygne Generating Station, Kansas area, the EPA requested that any additional information that the Agency should consider prior to finalizing the designation should be submitted by April 19, 2016. On March 1, 2016, the EPA also published a notice of availability and public comment period in the *Federal Register*, inviting the public to review and provide input on our intended designations by March 31, 2016 (81 FR 10563).

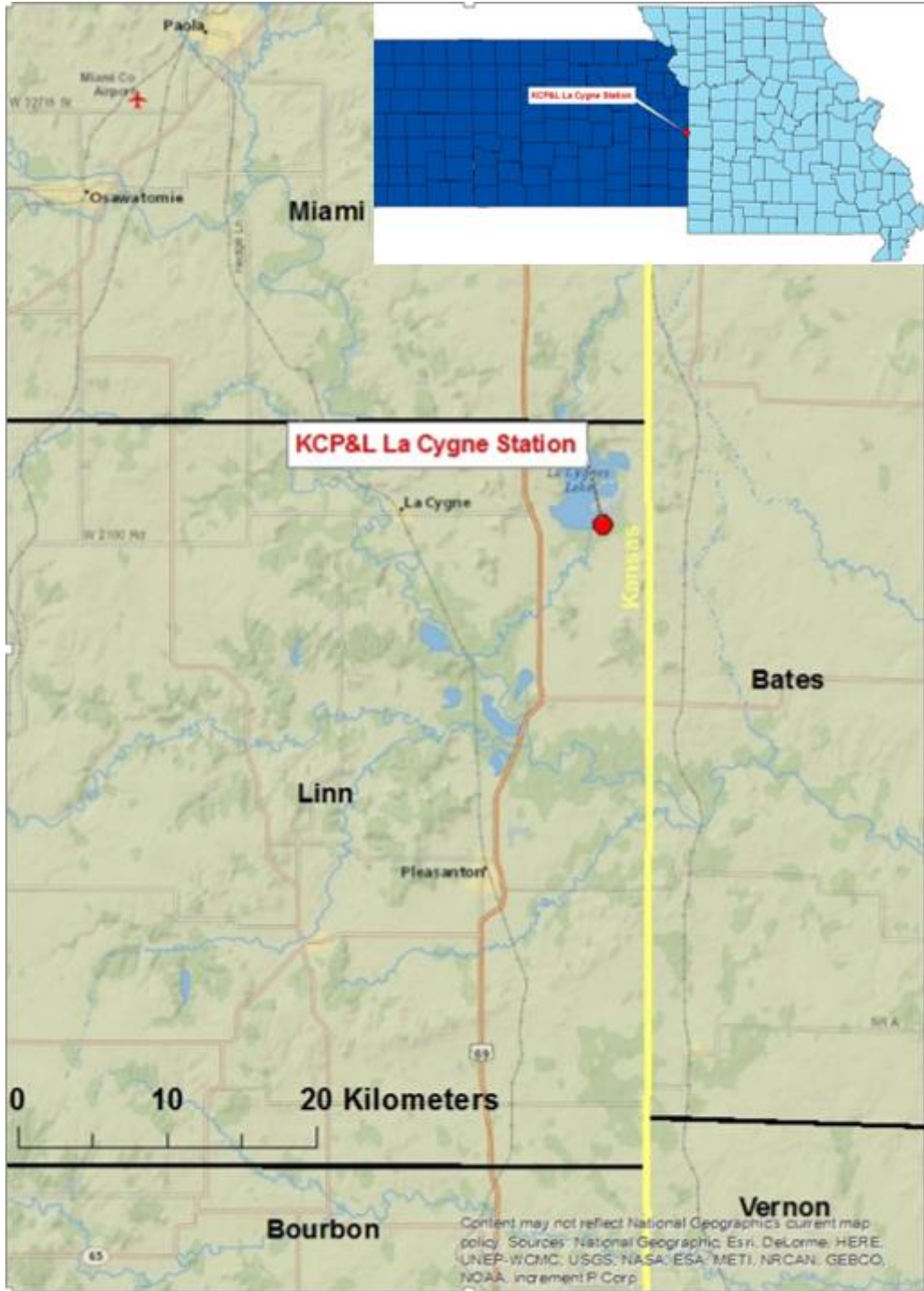
The EPA is explicitly incorporating and relying upon the analyses and information presented in the preliminary technical support document for the purposes of our final designation for this area, except to the extent that any new information submitted to the EPA or conclusions presented in this final technical support document and our response to comments document (RTC), available in the docket, supersede those found in the preliminary document.

Subsequent to our February 16, 2016 notification to the State, the EPA did not receive any additional information from Kansas, nor did we receive any public comments regarding our intended unclassifiable/attainment designation for the La Cygne Generating Station, Kansas area.

Conclusion

Therefore, based on the information available to the EPA at this time, including the analyses performed for the purposes of the preliminary technical support document and in the absence of any new information that would otherwise lead to a different conclusion regarding air quality in the area or any new information that would otherwise lead to a different conclusion regarding the area boundaries, the EPA determines that the La Cygne Generating Station, Kansas, area is meeting the 2010 SO₂ NAAQS, and therefore is designating the area as unclassifiable/attainment for the NAAQS. The boundaries for this unclassifiable/attainment area consist of entirety of Linn County, Kansas, and are shown in the figure below. Our final designation and associated boundaries are based on, among other things, the modeling analysis that the State of Kansas provided to the EPA. The modeling analysis submitted by Kansas for the La Cygne Station using federally enforceable emission limits demonstrated attainment and this modeling followed the recommended EPA modeling TAD for designation purposes.

Figure 1: The EPA's final unclassifiable/attainment area: La Cygne Generating Station, Kansas



At this time, our final designations for the state only apply to this area and the others contained in this final technical support document. Consistent with the court-ordered schedule, the EPA will evaluate and designate all remaining undesignated areas in Kansas by either December 31, 2017, or December 31, 2020.

Technical Analysis for Nearman Creek Station, Kansas

Final Designation Summary

After careful evaluation of the State's recommendation and supporting information, as well as all available relevant information, the EPA designates the Nearman Station area as unclassifiable for the 2010 SO₂ NAAQS. Specifically, the boundaries are comprised of the entirety of Wyandotte County, Kansas.

The EPA's designation of unclassifiable is based on, among other things, that the modeling analysis that the State of Kansas provided to the EPA, which demonstrated attainment, was performed using emission limits that are not federally enforceable by July 2, 2016. Therefore, the EPA cannot rely on the modeling provided to support a determination regarding whether the area meets or does not meet the NAAQS, and therefore is designating the Nearman Station area unclassifiable.

Introduction

The Nearman Creek Station, Kansas, area contains a stationary source that, according to the EPA's Air Markets Database, emitted in 2012 either more than 16,000 tons of SO₂ or more than 2,600 tons of SO₂ and had an annual average emission rate of at least 0.45 pounds of SO₂ per one million British thermal units (lbs SO₂/mmBTU). Specifically, in 2012, the Kansas City, Kansas' Board of Public Utilities (BPU) Nearman Creek (Nearman) Station emitted 4,612 tons of SO₂ and had an emissions rate of 0.64 lbs SO₂/mmBTU. As of March 2, 2015, this stationary source had not met the criteria for being "announced for retirement." Pursuant to the March 2, 2015, court-ordered schedule, the EPA must designate the area surrounding this facility by July 2, 2016.

In its September 9, 2015 submission, Kansas recommended that the area surrounding Nearman Station, Kansas facility, specifically Wyandotte County, Kansas, be designated as attainment based on an assessment and characterization of air quality from the facility and other nearby sources which may have a potential impact in the area of analysis where maximum concentrations of SO₂ are expected. This assessment and characterization was performed using air dispersion modeling software, specifically using AERMOD, analyzing both actual and allowable emissions from sources in the area.

On February 16, 2016, the EPA notified Kansas that we intended to designate the Nearman Station, Kansas, area as unclassifiable. Additionally, we informed Kansas that our intended boundaries for the unclassifiable area consisted of entirety of Wyandotte County, Kansas. Our intended designation and associated boundaries were based on, among other things, that fact that the modeling from Kansas that demonstrated attainment was performed using emission limits that are not federally enforceable by July 2, 2016. Detailed rationale, analyses, and other information supporting our intended designation for this area can be found in the preliminary technical support document for Kansas, and this document along with all others related to this rulemaking can be found in Docket ID EPA-HQ-OAR-2014-0464.

Assessment of New Information

In our February 16, 2016, notification to Kansas regarding our intended unclassifiable designation for the Nearman Station, Kansas, area, the EPA requested that any additional information that the Agency should consider prior to finalizing the designation should be submitted by April 19, 2016. On March 1, 2016, the EPA also published a notice of availability and public comment period in the *Federal Register*, inviting the public to review and provide input on our intended designations by March 31, 2016 (81 FR 10563).

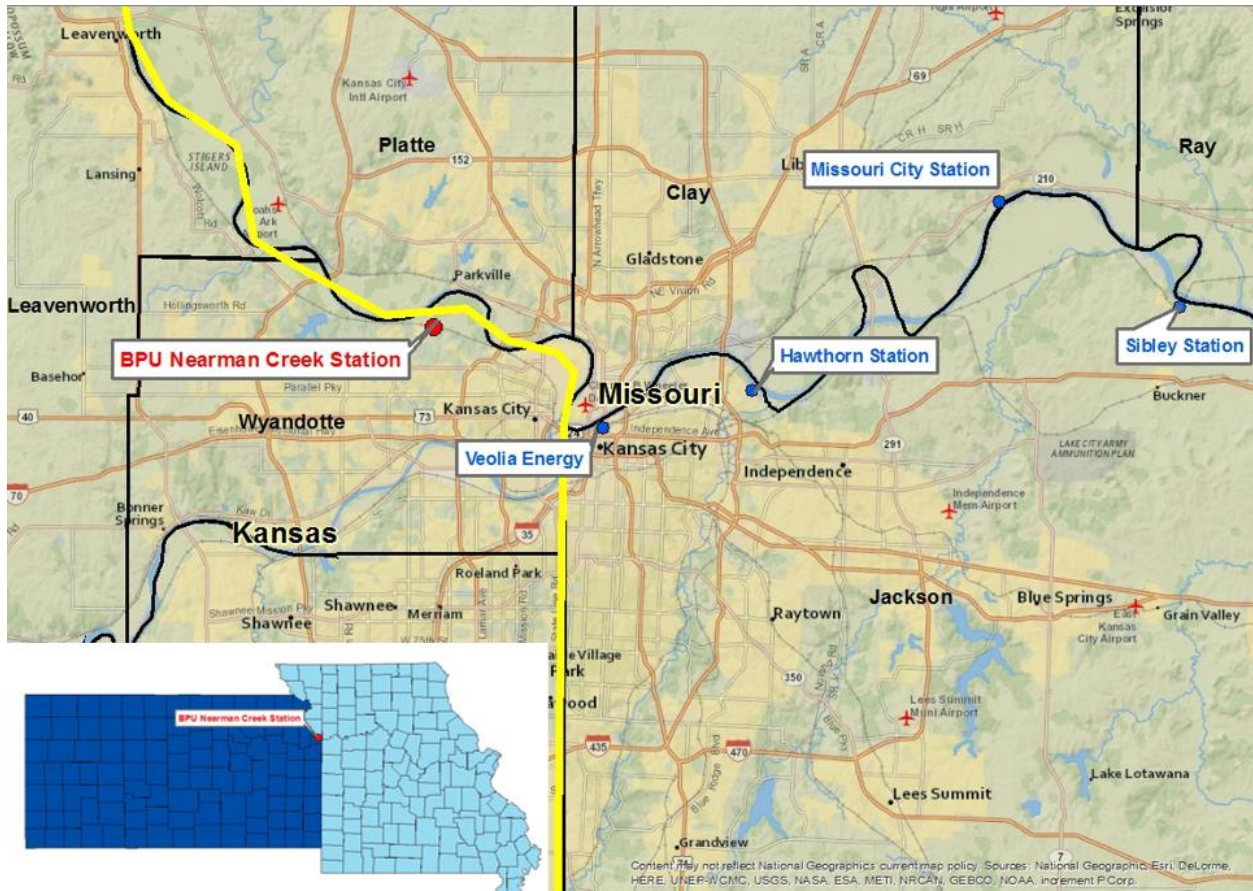
The EPA is explicitly incorporating and relying upon the analyses and information presented in the preliminary technical support document for the purposes of our final designation for this area, except to the extent that any new information submitted to the EPA or conclusions presented in this final technical support document and our response to comments document (RTC), available in the docket, supersede those found in the preliminary document.

Subsequent to our February 16, 2016, notification to the State, the EPA received comments and additional air dispersion modeling from BPU regarding our intended designation for this area. EPA had noted that in the modeling submitted by the State on September 9, 2015, the receptor domain did not include areas to the north and to the east of the facility. BPU submitted new modeling that added receptors to the north and to the east of the facility. However, the modeling continued to use emission limits that are not federally enforceable by July 2, 2016. Therefore, EPA cannot rely on the new information provided by BPU to support a determination regarding whether the area meets or does not meet the NAAQS, and therefore a designation of unclassifiable for the Nearman Station area is appropriate.

Conclusion

Therefore, based on the information available to the EPA at this time, including the analyses performed for the purposes of the preliminary technical support document and in the absence of any new information that would otherwise lead to a different conclusion regarding air quality in the area or any new information that would otherwise lead to a different conclusion regarding the area boundaries, the EPA is not able to determine whether the Nearman Creek Station, Kansas, is meeting the 2010 SO₂ NAAQS, and is designating the area as unclassifiable for the NAAQS. The boundaries for this unclassifiable area consist of the entirety of Wyandotte County, Kansas, and are shown in the figure below. Also included in the figure are nearby emitters of SO₂. Our final designation and associated boundaries are based on, among other things, the fact that the modeling analyses from Kansas and BPU that demonstrated attainment were performed using emission limits that are not federally enforceable by July 2, 2016.

Figure 2: The EPA's final unclassifiable area: BPU Nearman Station, Kansas



At this time, our final designations for the state only apply to this area and the others contained in this final technical support document. Consistent with the court-ordered schedule, the EPA will evaluate and designate all remaining undesignated areas in Kansas by either December 31, 2017, or December 31, 2020.

Technical Analysis for the Tecumseh Energy Center, Kansas Area

Final Designation Summary

After careful evaluation of the state's recommendation and supporting information, as well as all available relevant information, the EPA designates the area around the Tecumseh Energy Center as unclassifiable for the 2010 SO₂ NAAQS. Specifically, the boundaries are comprised of the entirety of Shawnee County, Kansas.

The unclassifiable designation is based, among other things, on the information the State of Kansas provided to the EPA. Specifically, there is no monitoring SO₂ data available in the vicinity of the Tecumseh Energy Center and EPA received no modeling analysis was provided to the EPA to evaluate the Tecumseh's impact on the surrounding area.

Introduction

The Shawnee County, Kansas, area contains a stationary source that, according to the EPA's Air Markets Database, emitted in 2012 either more than 16,000 tons of SO₂ or more than 2,600 tons of SO₂ and had an annual average emission rate of at least 0.45 pounds of SO₂ per one million British thermal units (lbs SO₂/mmBTU). Specifically, in 2012, the Westar Energy – Tecumseh Energy Center emitted 3,979 tons of SO₂ and had an emissions rate of 0.58 lbs SO₂/mmBTU. As of March 2, 2015, this stationary source had not met the criteria for being “announced for retirement.” Pursuant to the March 2, 2015, court-ordered schedule, the EPA must designate the area surrounding this facility by July 2, 2016.

In its September 9, 2015 submission, Kansas recommended that the area surrounding the Tecumseh Energy Center, Kansas, specifically Shawnee County, Kansas, be designated as unclassifiable based on an assessment and characterization of air quality from the facility and other nearby sources which may have a potential impact in the area of analysis where maximum concentrations of SO₂ are expected. This assessment and characterization was based on potential future emission reductions at the Tecumseh Energy Center and an adjacent significant SO₂ source.

On February 16, 2016, the EPA notified Kansas that we intended to designate the Tecumseh Energy Center, Kansas, area as unclassifiable. Additionally, we informed Kansas that our intended boundaries for the unclassifiable area consisted of the entirety of Shawnee County, Kansas. Our intended designation and associated boundaries were based on, among other things, no technical information presented by the state. Detailed rationale, analyses, and other information supporting our intended designation for this area can be found in the preliminary technical support document for Kansas, and this document along with all others related to this rulemaking can be found in Docket ID EPA-HQ-OAR-2014-0464.

Assessment of New Information

In our February 16, 2016, notification to Kansas regarding our intended unclassifiable designation for the Tecumseh Energy Center, Kansas, area, the EPA requested that any

additional information that the Agency should consider prior to finalizing the designation should be submitted by April 19, 2016. On March 1, 2016, the EPA also published a notice of availability and public comment period in the *Federal Register*, inviting the public to review and provide input on our intended designations by March 31, 2016 (81 FR 10563).

The EPA is explicitly incorporating and relying upon the analyses and information presented in the preliminary technical support document for the purposes of our final designation for this area, except to the extent that any new information submitted to the EPA or conclusions presented in this final technical support document and our response to comments document (RTC), available in the docket, supersede those found in the preliminary document.

Subsequent to our February 16, 2016, notification to the State, the EPA did not receive any additional information from Kansas, nor did we receive any public comments regarding our intended unclassifiable designation for the Tecumseh Energy Center, Kansas area.

Conclusion

Therefore, based on the information available to the EPA at this time, including the analyses performed for the purposes of the preliminary technical support document and in the absence of any new information that would otherwise lead to a different conclusion regarding air quality in the area or any new information that would otherwise lead to a different conclusion regarding the area boundaries, the EPA is not able to determine whether the Tecumseh Energy Center, Kansas area is meeting the 2010 SO₂ NAAQS, and is designating the area as unclassifiable for the NAAQS. The boundaries for this unclassifiable area consist of entirety of Shawnee County, Kansas, and are shown in the figure below. Also included in the figure are nearby emitters of SO₂ (Innovia Films). Our final designation and associated boundaries are based on, among other things, no technical information presented by the state.

Figure 3: The EPA's final unclassifiable area: Tecumseh Energy Center, Kansas



At this time, our final designations for the state only apply to this area and the others contained in this final technical support document. Consistent with the court-ordered schedule, the EPA will evaluate and designate all remaining undesignated areas in Kansas by either December 31, 2017, or December 31, 2020.