

Urban Waters National Training Workshop

Sheraton Pentagon City, 900 S. Orme St. Arlington, VA 22204 | (703) 521-1900

Logistics Information

Complimentary Shuttles – Sheraton Pentagon City

Ronald Reagan National Airport (DCA)

There is a Complimentary Shuttle to/from the Ronald Reagan National Airport. Operating hours are daily from 5:00am – 12:30am. Travel time is approximately 10 minutes.

From Airport to Hotel: Picks up from Terminal A, Door 5 and Door 9 on the 15 and 45 of every hour. First pick up: 5:15am; last pick up: 12:15am.

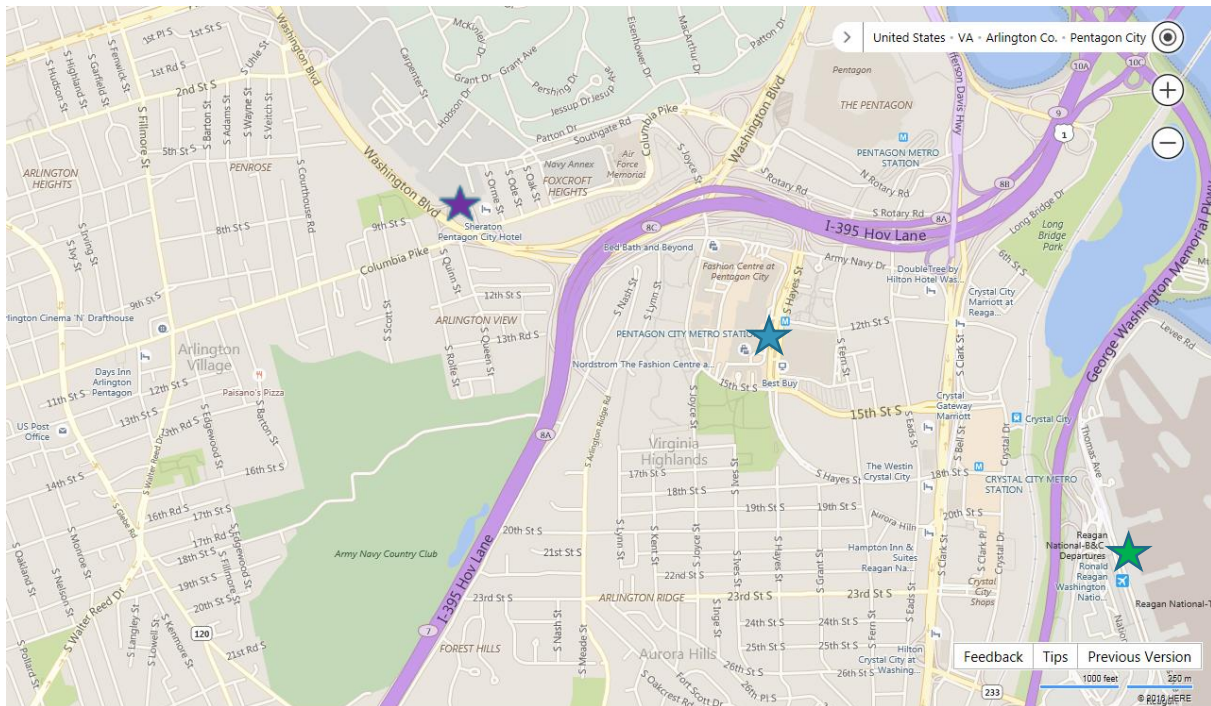
From Hotel to Airport: From 5am until 12:30am the shuttle leaves the hotel every 30 minutes on the hour and half hour.

Pentagon City Metro Station (Blue and Yellow Lines)




There is a Complimentary Shuttle to and from the Pentagon City Metro State. This shuttle is approximately a 2-3 minute drive from the metro to the hotel. The shuttle picks up and drops off at the Pentagon City Metro Station entrance near the Pentagon City Mall; use the Pentagon City Mall exit from the metro (towards S. Hayes and 12th Street).

From Hotel to Metro: Shuttle runs weekdays from 6:15am and weekends starting at 7:15am, until 11:15pm. The shuttle leaves the hotel on the 15 and 45 of every hour. The last shuttle leaves the hotel at 11:15pm.

From Metro to Hotel: Shuttle runs weekdays from 6:30am and weekends starting 7:30am until 11:30pm. The shuttle leaves the metro station every 30 minutes on the hour and half hour. Last shuttle leaves the metro at 11:30pm.



Legend:

- Sheraton Pentagon City 
- Pentagon City Metro 
- Ronald Reagan National Airport 

Urban Waters National Training Workshop

Sheraton Pentagon City, 900 S. Orme St. Arlington, VA 22204 | (703) 521-1900

Driving Directions

Sheraton Pentagon City: 900 S. Orme St. Arlington, VA 22204

From Washington Dulles International Airport

- Take Route 66 East to Route 110/Pentagon.
- Stay in the right lane and continue to the Washington Boulevard Exit.
- Continue to the Columbia Pike/Navy Annex Exit.
- The hotel will be directly in front of you.

From East

- Take I-95 South to Interstate 495 West to George Washington Parkway.
- Follow the Parkway for 8 miles to I-395 South/Route 27 (Lyndon B. Johnson Exit).
- Stay right at the fork.
- Take the Route 244 West Exit (Columbia Pike/Navy Annex).
- The hotel is on the right.

From South

- Take Interstate 95 North to I-395.
- Take Exit 8A - (Washington Boulevard).
- Travel in the far right lane for 1.25 miles.
- Take the Columbia Pike/Navy Annex Exit.
- The hotel will be directly in front of you.

From North

- Take Interstate 395 South to Exit 8 - (Washington Boulevard).
- Travel in the far right-hand lane for 0.25 mile.
- Take the Columbia Pike/Navy Annex Exit.
- The hotel will be directly in front of you.




Parking

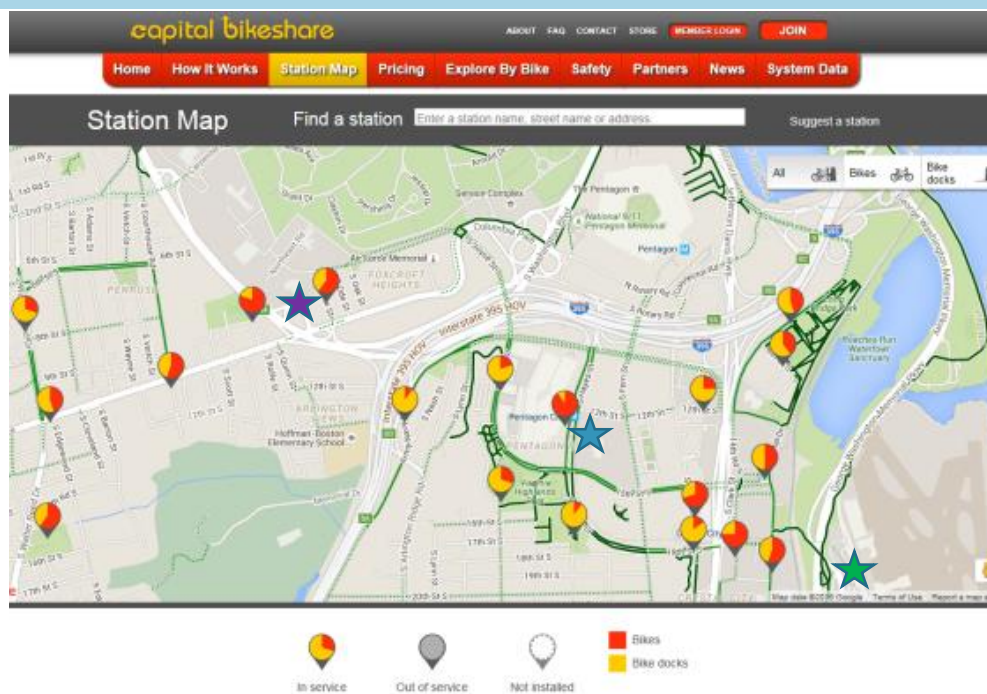
Covered, self-parking is available for all participants at \$10 per day.

Capital Bikeshare

Capital Bikeshare puts over 3000 bicycles at your fingertips. You can choose any of the over 350 stations across Washington, D.C., Arlington and Alexandria, VA and Montgomery County, MD and return it to any station near your destination. Check out a bike for your trip to work, Metro, run errands, go shopping, or visit friends and family. Join Capital Bikeshare for a day, 3 days, a month, a year or try the new Day Key option, and have access to a fleet of bikes 24 hours a day, 365 days a year. The first 30 minutes of each trip are free. Each additional 30 minutes incurs an additional fee.

Legend:

- Sheraton Pentagon City 
- Pentagon City Metro 
- Ronald Regan National Airport 



Sheraton Pentagon City, 900 S. Orme St. Arlington, VA 22204 | (703) 521-1900