



March 30, 2016

United States Environmental Protection Agency  
Sam Nunn Atlanta Federal Center  
61 Forsyth Street, SW  
Atlanta, Georgia 30303-8960

Attention: Mr. Wes Hardegree  
Environmental Engineer

Re: **Community Involvement Plan (Revision 2.0)**  
**ERP Compliant Coke, LLC**  
**3500 35<sup>th</sup> Avenue North**  
**Birmingham, Jefferson County, Alabama**  
**USEPA ID No. ALD 000 828 848**  
Terracon Project No. E1167085

Dear Mr. Hardegree:

On behalf of ERP Compliant Coke, LLC (ERP Coke), Terracon Consultants, Inc. (Terracon) is pleased to submit the enclosed revisions to the Community Involvement Plan (*Revision 2.0*) for the above-referenced site. These revisions have been prepared based on our annual review of the CIP:

#### **CLOSING**

If you should have any questions, please do not hesitate to contact us at (205) 942-1289.

Sincerely,  
**Terracon Consultants, Inc.**

Terrell W. Rippstein, AL-PG#8  
Principal Geologist

Cc: Mr. Don Wiggins – ERP Coke  
ADEM

# COMMUNITY INVOLVEMENT PLAN (REVISION 2.0)

ERP Compliant Coke, LLC  
3500 35<sup>th</sup> Avenue North  
Birmingham, Jefferson County, Alabama  
USEPA ID No. ALD 000 828 848  
March 30, 2016  
Terracon Project No. E1127096



Prepared for:



Birmingham, Alabama

Prepared by:

Terracon Consultants, Inc.  
Birmingham, Alabama

[terracon.com](http://terracon.com)

**Terracon**

Environmental



Facilities



Geotechnical



Materials



March 30, 2016

ERP Compliant Coke, LLC  
3500 35<sup>th</sup> Avenue North  
Birmingham, Alabama 35207

Attention: Mr. Don Wiggins

Re: **Community Involvement Plan (Revision 2.0)**  
**ERP Compliant Coke, LLC**  
**3500 35<sup>th</sup> Avenue North**  
**Birmingham, Jefferson County, Alabama**  
**USEPA ID No. ALD 000 828 848**  
Terracon Project No: E1167085

Dear Mr. Wiggins:

Terracon Consultants, Inc. has prepared this Community Involvement Plan (CIP) per your request for the above referenced site.

This plan has been prepared to be consistent with the following EPA guidance as stated in the executed RCRA Section 3008(h) Administrative Order on Consent (effective 9/24/12):

<http://www.epa.gov/oswer/engagementinitiative/related.htm>  
<http://www.epa.gov/wastes/hazard/tsd/permit/pubpart/manual.htm>

The CIP will serve as guidance to engage the public and promote understanding and participation in the RCRA process. If you have any questions, please call me.

Sincerely,  
**Terracon Consultants, Inc.**

Terrell W. Rippstein, AL-PG  
Principal Geologist

## **EXECUTIVE SUMMARY**

ERP Compliant Coke, LLC (ERP Coke) has prepared this Community Involvement Plan (CIP) to inform and involve the community in the technical environmental activities being performed on the ERP Coke facility property located at 3500 35<sup>th</sup> Street North, Birmingham, Jefferson County, Alabama.

This Community Involvement Plan (CIP) has been prepared to facilitate communication between the community and ERP Coke. ERP Coke will utilize the community involvement activities outlined in this plan to ensure that residents are reasonably informed of milestones associated with the technical work being performed under the RCRA Section 3008(h) Administrative Order on Consent (effective 9/24/12) [AOC].

The facility has a long history of community involvement. Like all communities, the North Birmingham community has specific and unique circumstances and ERP Coke has developed the CIP utilizing public participation activities that have been successful in this specific community and are consistent with EPA community engagement guidance. ERP Coke will use a variety of ways to engage the public on the activities being conducted at the ERP Coke Plant under the AOC, including maintaining an information repository, distributing fact sheets at key milestones, and operating a telephone information line.

## TABLE OF CONTENTS

Executive Summary .....	i
1.0 Introduction .....	1
1.1 What is RCRA?.....	1
1.2 Community Involvement Plan .....	1
2.0 Site Background.....	1
2.1 Site Description.....	1
2.2 Site History .....	2
2.3 1989 RCRA Order .....	3
2.4 2012 RCRA Order.....	4
3.0 Community Background.....	5
3.1 Community Profile .....	5
3.2 Community Concerns.....	5
4.0 Action Plan.....	5
4.1 RCRA Technical Milestones.....	6
4.2 Information Repository.....	6
4.3 Fact Sheets.....	7
4.4 Telephone Information Line .....	7
4.5 CIP Revisions .....	7
5.0 EPA’s Community Involvement.....	7
6.0 Contact List.....	7

## FIGURES

Figure 1	Site Location Map
Figure 2	Site Map
Figure 3	Neighborhood Map

## APPENDICIES

Appendix A	Contact Information for Churches and Neighborhood Associations
------------	--

## Acronyms and Abbreviations

ADEM	Alabama Department of Environmental Management
AOC	area of concern
ASTM	American Society for Testing and Materials
BERA	baseline ecological risk assessment
BTF	biological treatment facility
CEM	conceptual exposure model
CIP	Community Involvement Plan
COPC	constituent of potential ecological concern
CMS	Corrective Measures Study
DPT	direct-push technology
ECHO	Enforcement & Compliance History Online
EPA	U.S. Environmental Protection Agency
ERA	ecological risk assessment
ESV	ecological screening value
FCP	former chemical plant
FID	flame ionizing detection
FMC	Five Mile Creek
GIS	geographic information system
GPS	global positioning system
HHC	Hillsborough Holding Corporation
HHRA	human health risk assessment
HSDB	Hazardous Substances Data Bank
HSWA	Hazardous and Solid Waste Amendments
IM	Interim Measures
MATC	maximum acceptable toxicant concentration
MCL	maximum contaminant level
NAPL	non-aqueous phase liquid
NPDES	National Pollutant Discharge Elimination System
Order	Administrative Order on Consent
OSHA	Occupational Safety and Health Administration
PPE	personal protective equipment
PSV	preliminary screening value
QC	quality control
RBSL	risk based screening level
RCRA	Resource Conservation and Recovery Act
RFI	RCRA Facility Investigation
SMA	SWMU Management Area
SWMU	Solid Waste Management Area
VI	Vapor Intrusion

**Community Involvement Plan**  
**ERP Compliant Coke, LLC**  
**3500 35<sup>th</sup> Avenue North**  
**Birmingham, Jefferson County, Alabama**  
**USEPA ID No. ALD 000 828 848**  
Terracon Project No. E1167085  
March 30, 2016

## **1.0 INTRODUCTION**

### **1.1 What is RCRA?**

RCRA is the Resource Conservation and Recovery Act, which was enacted by Congress in 1976. RCRA's primary goals are to protect human health and the environment from the potential hazards of waste disposal, to conserve energy and natural resources, to reduce the amount of waste generated, and to ensure that wastes are managed in an environmentally sound manner. RCRA regulates the management of solid waste (e.g., garbage), hazardous waste, and underground storage tanks holding petroleum products or certain chemicals.

### **1.2 Community Involvement Plan**

This Community Involvement Plan (CIP) has been prepared to facilitate communication between the community and ERP Compliant Coke, LLC (ERP Coke). ERP Coke will utilize the community involvement activities outlined in this plan to ensure that residents are reasonably informed of specific milestones associated with the work being performed under the RCRA Section 3008(h) Administrative Order on Consent (effective 9/24/12) [AOC]. Although there are no regulations requiring public participation under 3008(h) Orders, ERP Coke has agreed to develop and implement this CIP to facilitate communication between the community and ERP Coke.

This CIP will be updated on at least an annual basis.

## **2.0 SITE BACKGROUND**

### **2.1 Site Description**

ERP Coke is located in North Birmingham, Jefferson County, Alabama (Figure 1). The site occupies approximately 400 acres, with the main entrance near the intersection of 35th Avenue and Shuttlesworth Drive in Birmingham.

ERP Coke is a leading producer of coke that is used in blast furnaces and foundries. The majority of this product is purchased by steel producers who use it to make their products. ERP Coke uses methods and technology that are among the most advanced in the industry.

## **2.2 Site History**

The roots of the facility can be traced back to 1881 when Sloss-Sheffield Steel and Iron Company first began producing pig iron in Birmingham, Alabama. In 1920 where ERP Coke sits today, Sloss-Sheffield Steel and Iron Company built two modern coke oven batteries, at the time considered state-of-the-art, to serve its own needs as well as those of other customers. As Birmingham's steel industry grew, so did the need for furnace coke, which prompted the construction of three more batteries at the site during the 1950s.

As American industry evolved in the ensuing years, so did ERP Coke (formerly known as Sloss Industries). Today, ERP Coke is a highly efficient, technologically advanced operation serving a variety of customers in the furnace and foundry markets.

The operation now consists of three batteries with a total of 120 coke ovens which produce approximately 460,000 tons of coke each year. A highly experienced operating staff provides assurance of adherence to strict operating, environmental, and safety standards.

The original coke manufacturing facility began operation in 1920 as Sloss Sheffield Steel and Iron Company. Beginning in 1952, the company experienced a series of corporate transactions and restructurings that culminated in the name change to Walter Coke in May 2009. ERP Coke purchased the facility from Walter Energy in February 2016. ERP Coke is a subsidiary of the Virginia Conservation Legacy Fund (VCLF) Land Trust. VCLF works closely with the coal industry to promote best management practices in land reclamation, reforestation, and water quality improvement. The following operations have occurred at the facility:

- n Coke manufacturing has occurred since 1920 and 120 coke ovens continue to operate.
- n Chemical manufacturing began at the facility in 1948 and all chemical manufacturing operations ceased in 2002.
- n An iron blast furnace that produced pig iron from iron ore began operation in 1958; blast furnace operations ceased in 1981, and the blast furnace was decommissioned in 1984.
- n The mineral wool plant which manufactured mineral fiber used in the production of ceiling tile and insulating products was built in late 1947 and was decommissioned in 2010.



- n The biological treatment facility (BTF), designed to treat wastewater generated at the facility, was constructed in 1973-74, first received wastewater in 1975 and is still in operation today.

The land around the ERP Coke facility is zoned for industrial and residential use. Before 1957, the area was primarily industrial, with significant numbers of other facilities, including coke and cement manufacturing plants, pipe manufacturing plants, and limestone quarry operations. Residential neighborhoods were constructed on properties in the area of ERP Coke and these other industrial operations only after 1957 (EPA, 1990). The realistic future land use for the ERP Coke facility is industrial.

### **2.3 1989 RCRA Order**

The following provides a brief chronological overview of the regulatory history associated with the 1989 RCRA Order:

- n August 1989 - EPA completed the RFA.
- n September 29, 1989 - Section 3008(h) Administrative Order 89-39-R was issued to Sloss to perform an RFI and to perform a Corrective Measures Study (CMS).
- n October 24, 1990 – After a challenge to the 1989 Administrative Order, EPA and the company entered into a Modification to the Administrative Order and Settlement Agreement, which then governed work at the facility.
- n 1990 to 1994: Sloss initiated planning for the RFI to characterize the nature, extent, and rate of contaminant migration from the identified SWMUs, and submitted a draft RFI Work Plan to EPA for review and approval.
- n The RFI Work Plan, which outlined an approach for investigating the 39 SWMUs, was approved by EPA in 1994.
- n 1995 and 1996: A Facility-Wide Investigation (FWI) was completed to develop a conceptual hydrogeologic and hydrologic model of the facility.
- n 1996 to 1999: RFI field investigations were conducted and reports submitted to EPA.
- n 2000 to 2001: Phase II field investigations were conducted.
- n 2002: Interim Remedial Measures (IM) Work Plan for the Chemical Plant was submitted to EPA.

In an effort to help EPA complete its environmental indicator (EI) determinations for the site and thereby help EPA meet its Government Performance Results Act (GPRA) goal to show that human exposures and groundwater releases were controlled by September 30, 2005, Walter Coke completed the following activities that are specific for EI determination:

- n February 2005 – Walter Coke submits the Proposed EI Sampling Plan.
  - o March 2005 – EPA approves the EI Sampling Plan.

- n July 2005 - Walter Coke submits the Consolidated Overview of Environmental Data in Support of the EI Determination.
  - o September 30, 2005 – EPA issued the final EI evaluation of the facilities status in relation to RCRA Information System (RCRIS) CA Codes 725 and 750. The CA 725 decision was noted as “Yes”; the CA 750 decision was noted as “No”.

Following the completion of the EI activities, EPA and Walter Coke focused on the next phase of RFI activities.

- n 2006: EPA issued technical comments on several RFI reports.
- n 2007 – Phase III RFI Work Plan prepared and approved by EPA.
- n 2009 – Walter Coke submits the Draft Phase III RFI Report.
  - o June 2009 – Walter Coke submits Addendum to the Phase III report.

## **2.4 2012 RCRA Order**

A RCRA Section 3008(h) Administrative Order on Consent (Order) with the effective date of September 24, 2012, was signed by Walter Coke and the EPA. The 2012 Order declared that all of the approved investigation tasks of the RFI Work Plans required by the 1989 Order had been completed by Walter Coke and that the 1989 Order was terminated and no longer in effect. In the 2012 Order, there are 45 SWMUs, 6 AOCs, and 5 SMAs at the facility (Figure 2) listed. ERP Coke has assumed responsibility for performing activities under the Order.

As part of the Order, a Corrective Measures Study (CMS) is being prepared for each of the 5 SMAs to evaluate the need, if any, for corrective measures. The initial submittal dates for the CMSs were:

- n CMS SMA 1 – March 30, 2013
- n CMS SMA 2 – June 21, 2013
- n CMS SMA 3 – September 24, 2013
- n CMS SMA 4 – June 24, 2014
- n CMS SMA 5 – September 24, 2014

In addition to the CMS, Interim Measures (IM) are being conducted in the area of SMA 4 to address groundwater impacts largely confined to the site. The IM consists of hydraulic control of the groundwater in AOC D (FCP Groundwater Plume), groundwater sampling and analysis, and a Vapor Intrusion (VI) Study. The EPA has approved the IM. Hydraulic Control and groundwater monitoring has been ongoing since April 2014. The VI was completed on February 5, 2015 and the EPA approved the report on February 18, 2015. The VI Report concluded that no further action was needed with respect to potential vapor intrusion.

## **3.0 COMMUNITY BACKGROUND**

### **3.1 Community Profile**

According to the US EPA Enforcement & Compliance History Online (ECHO), the community demographics within a 3-mile radius of the ERP Coke facility are the following:

- n Households – 13,505
- n Housing units – 16,863
- n Total persons – 35,767
- n Population density – 1,271 per square mile
- n Households on public assistance – 504
- n Percent minority – 86%
- n Persons below poverty level – 22,902

Figure 3 illustrates the boundaries of the Fairmont, Harriman Park, and Collegeville neighborhoods. In addition, the location of the ERP Coke Plant is shown.

### **3.2 Community Concerns**

The community can express their concerns, if any, via telephone to ERP Coke. The phone number for contact is 205-808-7712. The community can express their concerns or request information. The community can request information such as contact information for EPA or other governmental agencies and other related site-specific environmental issues.

Past community concerns that have been brought to the attention of and addressed by ERP Coke include: truck traffic; dust control; and site aesthetics (i.e., new fencing).

The community feedback received will be reviewed and used as appropriate to update or revise the CIP. We will also continue to evaluate how feedback is received and information is dispersed to the community (i.e., texting, social media, physical signage, etc.)

## **4.0 ACTION PLAN**

More than 5,000 facilities in the United States are subject to RCRA corrective action. The degree of cleanup necessary varies significantly across these facilities. Few of these activities will follow exactly the same course; therefore, program implementers and facility owners/operators must be allowed significant latitude to structure the corrective action process, develop cleanup objectives, and select remedies appropriate to facility-specific circumstances. Similar latitude must be

## Community Involvement Plan (Revision 2.0)

ERP Coke ■ Birmingham, Alabama

March 30, 2016 ■ Terracon Project No. E1127096



allowed in determining the best approach to public participation based on the history and uniqueness of each facility.

The facility has a long history of community involvement. Based on this history and what has shown to be the most effective and consistent with EPA community engagement guidance, ERP Coke will use a variety of ways to engage the public on the activities being conducted at the ERP Coke Plant under the Administrative Order on Consent, including maintaining an information repository, distributing fact sheets at key milestones, and providing telephone contact information.

The following entities will be used as channels for reaching the community and offering opportunities for input from the community:

- n US EPA
- n ADEM
- n Local elected officials
- n Local churches
- n The neighborhood associations of Harriman Park, Collegeville, and Fairmont.

The contact information for these entities is included in Section 6.0 and Appendix A.

The following sections describe public involvement activities that ERP Coke will use, their purposes, and descriptions of how the activities will be used.

### 4.1 RCRA Technical Milestones

The RCRA technical milestones were presented in Section 2.4. As each Report is finalized and approved by EPA, one or more of the community involvement activities provided in the following sections will be conducted by ERP Coke. In addition to the technical milestones, ERP Coke will use these community involvement activities whenever the need arises to engage or inform the public about events or other specific concerns and issues that arise.

### 4.2 Information Repository

An Information Repository is a place where the public may read and review site information, including documents that are the subject of public comment.

For this project, the information repository is located at:

North Birmingham Public Library, 2501 31<sup>st</sup> Avenue North, Birmingham, Alabama 35207  
Phone (205) 226-4025

This information repository also has previously conducted reports.

### **4.3 Fact Sheets**

ERP Coke plans to prepare and distribute fact sheets at key milestones (e.g., Interim Measures Report, Corrective Measures Study) over the course of the project. The fact sheets are intended to inform the community of comment opportunities and important site activities. These fact sheets will be provided to local churches and to the neighborhood associations of Harriman Park, Collegeville, and Fairmont. A contact information list is provided in Appendix A.

ERP Coke will make the fact sheets available to EPA to post on their website at [http://www.epa.gov/region4/foia/readingroom/rcra\\_community/ERP.html](http://www.epa.gov/region4/foia/readingroom/rcra_community/ERP.html).

### **4.4 Telephone Information Line**

As described in Section 3.2 above, the telephone contact number is 205-808-7712.

### **4.5 CIP Revisions**

The CIP will be updated at a minimum on an annual basis so as to keep current with the pace of technical work being performed. In addition, the community involvement approaches will be refined if needed to keep current with what works and new involvement opportunities. Both EPA and ERP Coke consider the CIP a living document.

## **5.0 EPA'S COMMUNITY INVOLVEMENT**

The EPA, as necessary, will conduct community involvement activities complementary to and to supplement ERP Coke's. The EPA will be the face of the technical environmental activities conducted at the site. EPA's activities may include:

- n Conducting Public Meetings to discuss specific RCRA milestones;
- n Conducting Workshops to discuss the RCRA process;
- n Conduct special events as appropriate;
- n Public Comment Periods on Corrective Measures or other site activities, as necessary.

## **6.0 CONTACT LIST**

The EPA and ERP Coke contacts are listed below

### **EPA Project Officer**

Wesley Hardegree, Environmental Engineer, RCRA Division  
Sam Nunn Atlanta Federal Center  
61 Forsyth Street  
Atlanta, Georgia 30303

Phone: 404.562.9629 (w)  
E-mail: [hardgree.wes@epa.gov](mailto:hardgree.wes@epa.gov)

### **ERP Coke Contact**

Don Wiggins, Manager of Technical Services  
ERP Coke  
3500 35<sup>th</sup> Avenue North  
Birmingham, Alabama 35007

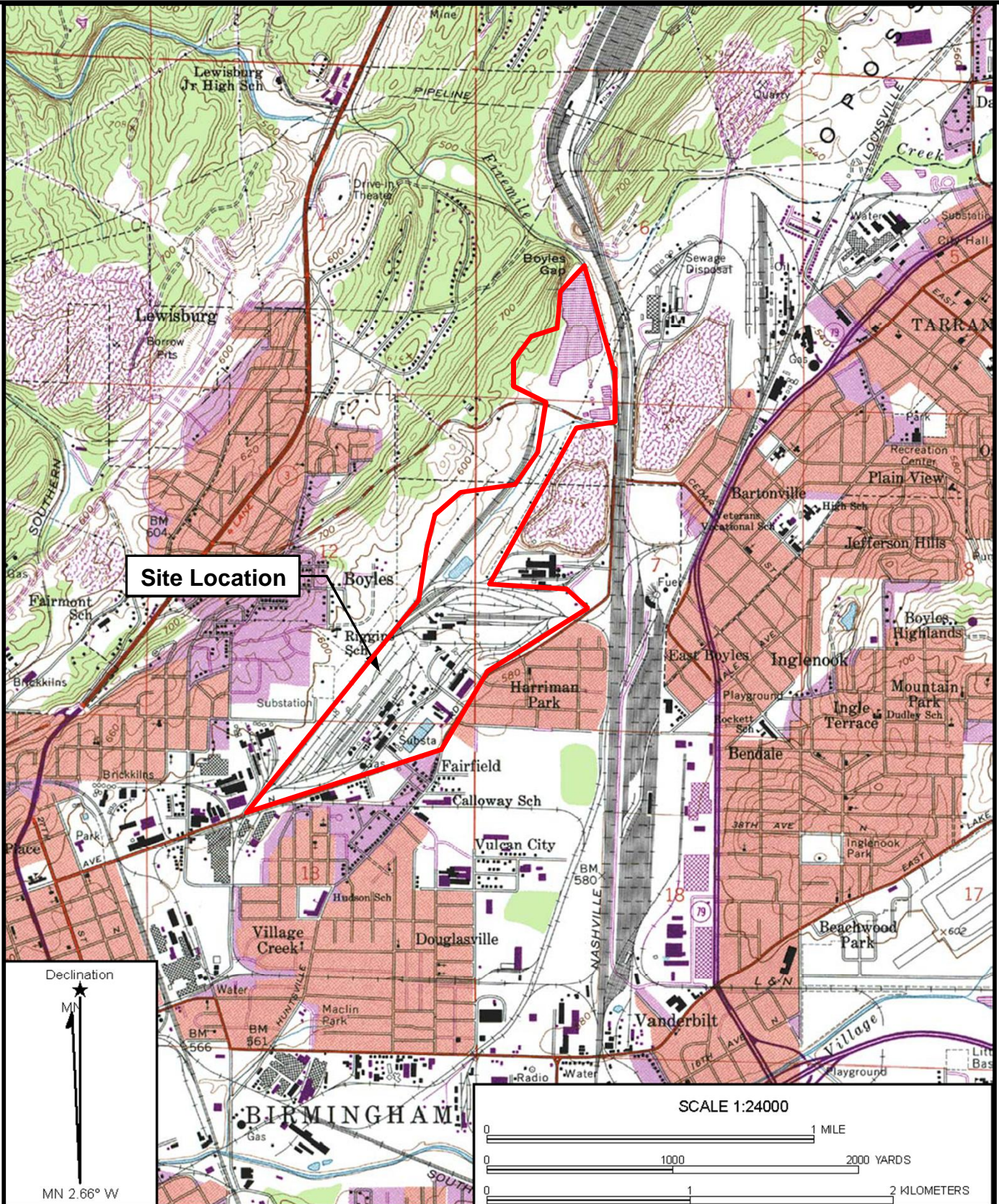
### **Alabama Department of Environmental Management**

ADEM  
1400 Coliseum Blvd  
Montgomery, Alabama 36110

Phone : 334-271-7700

A list and contact information for the local politicians, neighborhood contacts, and local churches are presented in Appendix A.

**Figures**



Name: Birmingham North, AL  
 Date: 1959, photorevised 1970,  
 photoinspected 1978

Scale: 1 inch = 2,000

Location: 033° 34' 09.52" N 086° 47' 42.31" W

**Terracon**

PROJECT  
 WALTER COKE  
 3500 35<sup>TH</sup> AVENUE NORTH  
 BIRMINGHAM, ALABAMA  
 TERRACON PROJECT NO.: E1127051

FIGURE 1  
 TOPOGRAPHIC MAP

Scale As Noted



**BTF Process Area and Sewers - SMA 1**  
 SWMU #13 - Equalization Basin  
 SWMU #14 - pH Neutralization Basin  
 SWMU #15 - Primary Clarifier  
 SWMU #16 - Aeration Basin  
 SWMU #17 - Secondary Clarifier  
 SWMU #18 - Thickener  
 SWMU #19 - Digester  
 SWMU #20 - Dewatering Machine  
 SWMU #21 - Former Emergency Basin  
 SWMU #22 - Polishing Pond  
 SWMU #40 - Historic Drainage Ditch  
 SWMU #41 - Former Impoundment  
 AOC A - Pipe Outfall into Ditch next to BTF Area  
 AOC F - BTF Groundwater Plume

**Land Disposal Area (LDA) - SMA 2**  
 SWMU #4 - BTF Sewer  
 SWMU #23 - Biological Sludge Disposal Area  
 SWMU #24 - Blast Furnace Control Sludge Piles A and B  
 SWMU #25 - Stormwater Ditch  
 SWMU #38 - Landfill  
 SWMU #39 - Blast Furnace Control Sludge Waste Pile

**Coke Manufacturing Plant - SMA 3**  
 SWMU #1 - Quench Towers & Sumps  
 SWMU #2 - Quench Tower Pump Basins  
 SWMU #3 - Old Quench Tower Settling Basins  
 SWMU #5 - Coal Tar Storage Area Drain System  
 SWMU #6 - Spill Area Around Diesel Tank  
 SWMU #7 - Coal Tar Collection Sump  
 SWMU #8 - Flushing Liquor Decanter  
 SWMU #9 - Flushing Liquor Decanter Sump  
 SWMU #10 - Coal Tar Decanter  
 SWMU #11 - Coal Tar Decanter  
 SWMU #12 - Coal Tar Decanter  
 SWMU #37 - BTF Sewer Tar Trap  
 AOC E - Coke Plant Groundwater Plume

**Former Pig Iron Foundry (PIF) - SMA 5**  
 SWMU #43 - Pig Machine Slurry Pits  
 SWMU #44 - Blast Furnace Ash Boiler Pit  
 SWMU #45 - Slag Drying Beds  
 AOC C - Former Pig Iron Foundry

**Former Chemical Plant (FCP) - SMA 4**  
 SWMU #26 - Main Process Building  
 SWMU #27 - Floor Drain System  
 SWMU #28 - Sulfonation Floor Drain  
 SWMU #29 - Product Tank Containment Area  
 SWMU #30 - Centrifuge Waste Water Tank  
 SWMU #31 - Monohydrate Floor Drain and Sump  
 SWMU #32 - Drum Storage Area  
 SWMU #33 - Plant Drum Storage Area  
 SWMU #34 - Wastewater Neutralization System  
 SWMU #35 - Mineral Wool Waste Piles  
 SWMU #36 - Used Oil Tank  
 SWMU #42 - Former Aboveground Storage tanks (ASTs)  
 AOC B - Drainage Ditch next to Shuttlesworth Drive and 35th Ave.  
 AOC D - Former Chemical Plant [FCP] Groundwater Plume

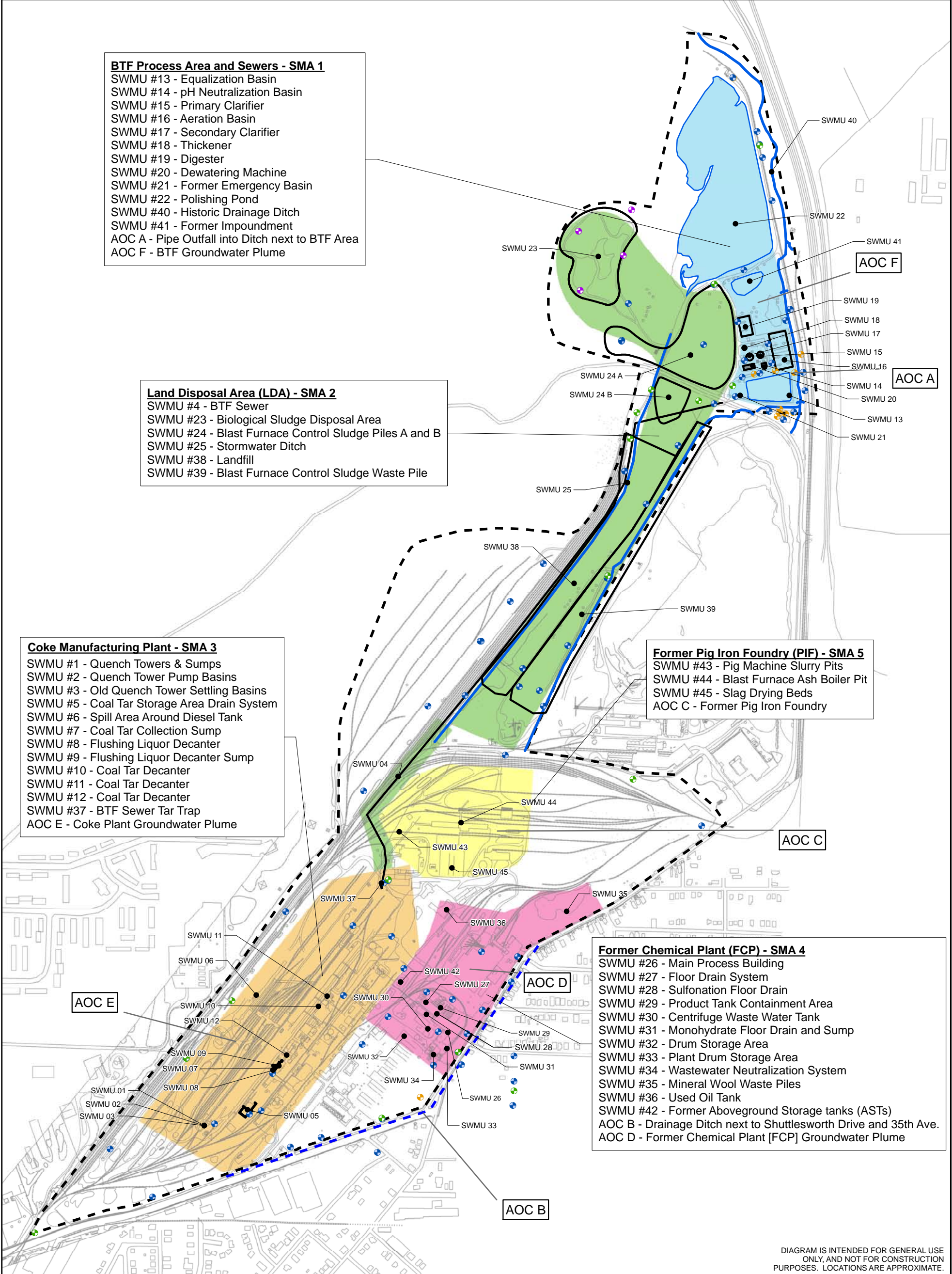
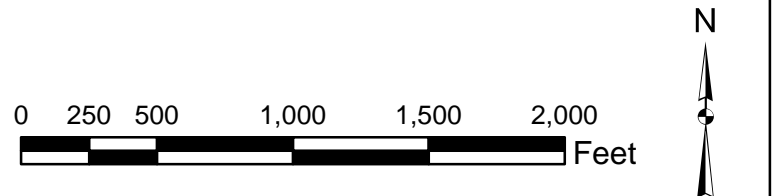


DIAGRAM IS INTENDED FOR GENERAL USE ONLY, AND NOT FOR CONSTRUCTION PURPOSES. LOCATIONS ARE APPROXIMATE.

**Legend**

- Proposed Solid Waste Management Areas (SMAs)**
- BTF Process Area and Sewer - SMA 1
  - Land Disposal Area - SMA 2
  - Coke Manufacturing Plant - SMA 3
  - Former Chemical Plant - SMA 4
  - Former Pig Iron Foundry - SMA 5

- Notes:**
- 1) SWMU - Solid Waste Management Unit
  - 2) Management Area boundaries are used for approximation.
  - 3) AOC - Area of Concern



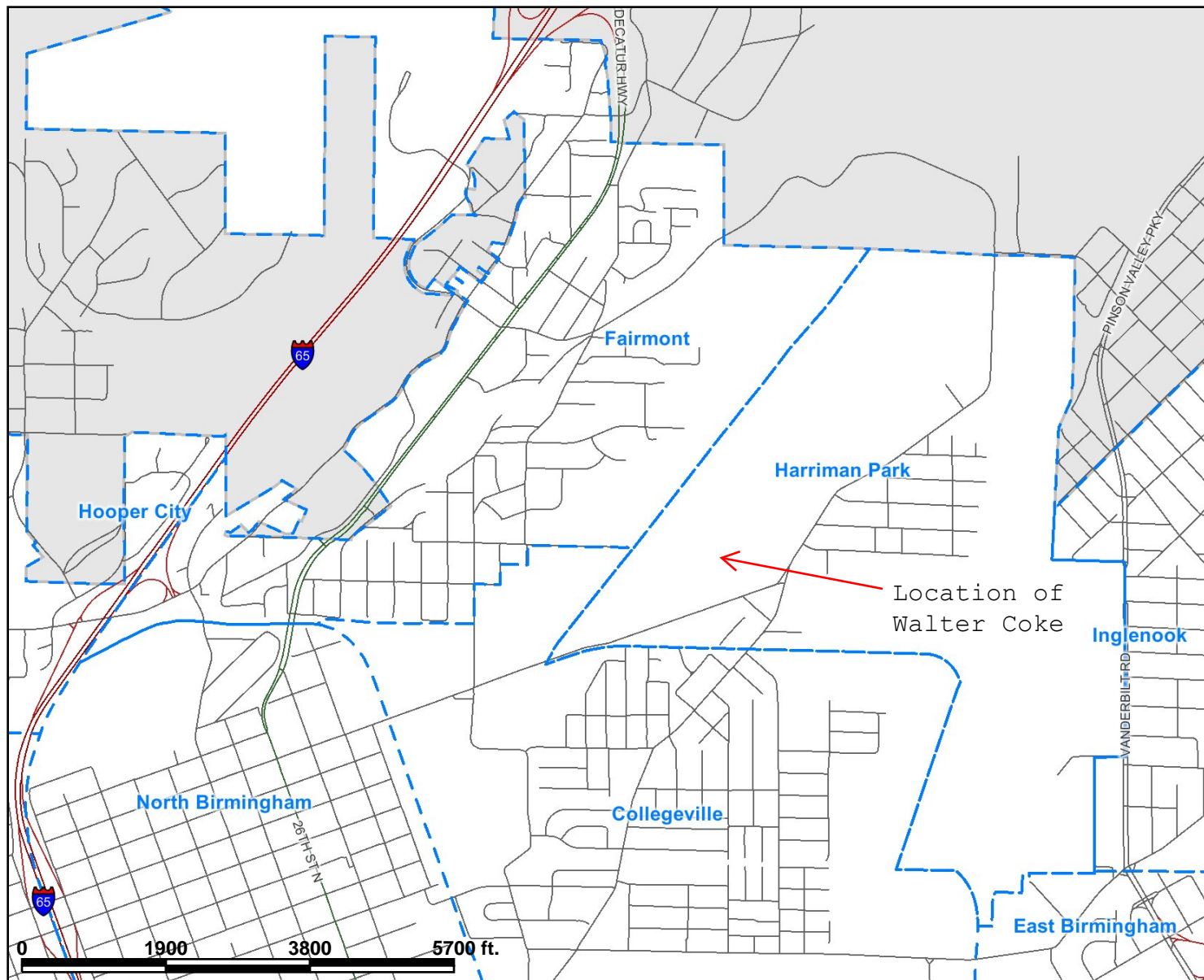
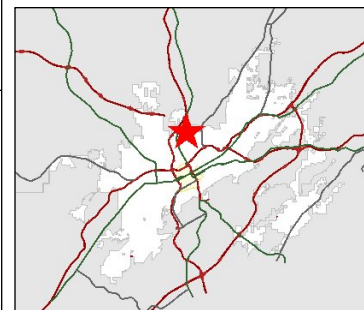
Project Mngr:	TWR
Checked By:	TWR
Approved By:	TWR
Drawn By:	GFA

Scale:	SHOWN
Date:	7/24/2012
Project No.:	E1127096
File Name:	Figure 1

**Terracon**  
 Consulting Engineers & Scientists  
 110 12th St. North Birmingham, Alabama 35203  
 Phone: (205) 942-1289 Fax: (205) 443-5302

**SITE MAP**  
 CLIENT: **Walter Coke**  
 3500 35th Avenue North  
 Birmingham, AL 35207

<b>FIGURE</b>
G



**Legend**

- Neighborhood Boundary
- City Limits

Scale: 1:24,731

The City of Birmingham makes no warranty, expressed or implied, as to the accuracy of the information represented herein. This map is a user generated static output from an Internet mapping site and is for general reference only.

<http://gisweb.informationbirmingham.com>

Map Created: December 17, 2012

Figure 3. Neighborhood Map



**Appendix A**  
**List of Area Contacts**

## Local Political Contacts

### **Councilor William Parker – Birmingham City Council**

Cell – (205) 335-5138

Office – (205) 254-2464

[william.parker@birminghamal.gov](mailto:william.parker@birminghamal.gov)

## Neighborhood Contacts

### **Fairmont Neighborhood Association**

Meeting Dates and Location:

First Tuesday of each month 6:00 p.m.

Northside Church of God

2873 41st Avenue North

**Ronald Mitchell, President**

Home - (205) 841-3786

Cell - (205) 478-6575

### **Collegetown Neighborhood Association**

Meeting Dates and Location:

First Monday of every month 6:30 p.m.

JCCEO Center (Calloway School)

3417 34th Terrace North

**Vivian Starks – President**

Home – (205) 841-6502

### **Harriman Park Neighborhood Association**

Meeting Dates and Location:

Fourth Thursday of every month 6:30 p.m.

Harriman Park recreational Center

4349 Shuttlesworth Drive

**Jones Monday**

Home – (205) 849-7715

Cell – (205) 568-5815

### **North Birmingham Public Library**

2501 31<sup>st</sup> Avenue North

Birmingham, AL 35207

(205) 226-4025

Hours: Monday – Tuesday 9-8; Wednesday – Saturday 9-6; Sun. 2-6

### **Harriman Park Recreational Center**

4345 Shuttlesworth Drive

Birmingham, AL 35207

### **List of Area Churches**

First Baptist Church of Birmingham, 3601 44th Avenue North, Birmingham, AL 35207  
New Allen Temple AME Church, 4353 F L Shuttlesworth Dr, Birmingham, AL 35207  
New Progress Baptist Church, 3416 34th Ter N, Birmingham, AL 35207  
St. Tabernacle Methodist Church, 3244 Pearl Ave, Birmingham, AL 35207  
Northside Church of God, 2873 41st Ave North, Birmingham, AL 35207  
Friendship Baptist Church, 3351 30th Place North, Birmingham, AL 35207  
Mt. Olive Community Church, 3345 32nd Street North, Birmingham, AL 35207  
Peace Baptist Church, 3400 34th Street North, Birmingham, AL 35207  
Christian Valley Baptist Church, 3104 33rd Ter N, Birmingham, AL 35207  
Collegeville Church of Christ, 3301 32nd Street North, Birmingham, AL 35207  
Shady Grove Baptist Church, 3444 31st Way N, Birmingham, AL 35207  
Trinity Church, 3013 Shuttlesworth Dr., Birmingham, AL 35207  
Antioch Baptist Church, 3309 33rd St N, Birmingham, AL 35207  
The Apostolic Faith Church, 3925 Fairmont St, Birmingham, AL 35207  
Bethel Baptist Church, 3200 28th Ave N, Birmingham, AL 35207  
Bryant Fountain of Love Baptist Church, 2130 31st Ave N, Birmingham, AL 35207  
Christian Valley Baptist Church, 3104 33rd Ter N, Birmingham, AL 35207  
Church Without Walls, 2911 49th Ave N, Birmingham, AL 35207  
Collegeville Church of Christ, 3301 32nd St N, Birmingham, AL 35207  
Evergreen Missionary Baptist Church, 3013 56th Ave N, Birmingham, AL 35207  
Flat Hill Baptist Church, 4164 23rd Way N, Birmingham, AL 35207  
Followers of Christ Outreach Ministry, 4320 Cheek Rd, Birmingham, AL 35207  
The Glorious Church of God in Christ, 4008 24th St N, Birmingham, AL 35207  
Greater Antioch Baptist Church, 3441 27th Ct N, Birmingham, AL 35207  
Greater New Height Baptist Church, 2101 34<sup>th</sup> Avenue N, Birmingham, AL 35207  
Joyful News Christian Church, 2610 29th Ave N, Birmingham, AL 35207  
Livestone Missionary Baptist Church, 3421 31st Pl N, Birmingham, AL 35207  
Morningstar Baptist Church, 100 40th Ave N, Birmingham, AL 35207  
Mount Olive Missionary Baptist Church, 2409 40th Ave N, Birmingham, AL 35207  
Mt. Pilgrim Baptist, 2500 35<sup>th</sup> Avenue N, Birmingham, AL 35207  
Mount Pleasant Pbc Church, 3120 29th Ave N, Birmingham, AL 35207  
Mount Pleasant United Methodist Church, 4048 Church St N, Birmingham, AL 35207  
Mt Calvary Baptist Church, 3109 44th Ter N, Birmingham, AL 35207  
Mt Carmel Christian Church, 5110 Cheek Rd, Birmingham, AL 35207  
New Georgia Baptist Church, 5300 Decatur Hwy, Birmingham, AL 35207  
New Hope Baptist Church of Collegeville, 3356 33rd St N, Birmingham, AL 35207  
New Mount Olive Baptist Church, 4124 26th St N, Birmingham, AL 35207  
New Rising Star Baptist Church, 3104 33rd Pl N, Birmingham, AL 35207  
Olivet Monumental Baptist Church, 2516 33<sup>rd</sup> Avenue N, Birmingham, AL 35207  
Overcomers by Faith Church, 2820 29th Ave N, Birmingham, AL 35207  
Pilgrim Home Baptist Church, 101 40th Ct W, Birmingham, AL 35207  
Providence Baptist Church, 3619 2nd Pl W, Birmingham, AL 35207  
Saint Paul Baptist Church, 4699 Cheek Road, Birmingham, AL 35207  
Zion Hope Baptist Church, 2808 32<sup>nd</sup> Avenue N, Birmingham, AL 35207  
St Mark Baptist Church, 3520 Fl Shuttlesworth Dr, Birmingham, AL 35207  
Greater Works Baptist Church, 3420 27<sup>th</sup> Street N, Birmingham, AL 35207  
Thirtieth Avenue Church of Christ, 1700 30th Ave N, Birmingham, AL 35207  
True House of Prayer Baptist Church, 4100 29th St N, Birmingham, AL 35207  
Wilson Chapel Baptist Church, 3401 31st Ave N, Birmingham, AL 35207

Word of Truth Ministry, 2509 27th Ave N, Birmingham, AL 35207  
Wright's Chapel United Methodist Church, 2133 32nd Ave N, Birmingham, AL 35207  
Zion Hope Baptist, 2808 32nd Ave N, Birmingham, AL 35207  
A W Holy Church of the True, 2424 30<sup>th</sup> Avenue N, Birmingham, AL 35207  
Sacred Heart Church, 3401 27<sup>th</sup> Court N, Birmingham, AL 35207