



Estado Libre Asociado de Puerto Rico
Municipio de Loíza

Hon. Julia M. Nazario Fuentes
Alcaldesa


Jun 21, 2017

Eng. Sergio Bosques
Regional Storm Water Coordinator
Caribbean Environmental Protection Division
City View Plaza II – Suite 7000
#48 Rd. 165 km 1.2
Guaynabo, PR 00968-8069

NOTICE OF INTENT-NOI- *MUNICIPALITY OF LOÍZA (Modified)*,
FOR STORM WATER DISCHARGES FROM SMALL MS4s IN URBANIZED AREAS

As part of the provisions of the Clean Water Act, Section 402 (p), requires that storm water discharges, associated with municipal separate storm sewer system (MS4s) in urbanized areas, to waters of the US must be authorized by a National Pollutant Discharge Elimination System (NPDES) permit. In order to comply with this requirement, we are submitting our Notice of Intent for the NPDES Permit no. PRR040051. The updated SWMP document will be modified in the next 6 months as required in Section 1.11 of the 2016 signed permit, and pursuant to Title 40, Part 122.34 Subpart B, or Permit Application and Special NPDES Program Requirements. The Municipality of Loíza has the intention of comply with the Permit's provisions and EPA requirements. In you need additional information, do not hesitate to contact us at the Mayor's Office at 787-876-1040 or via e-mail at lcojrosario@gmail.com.

Sincerely,


Julia M. Nazario Fuentes
Mayor

Enclosure

Modified Notice of Intent



GOBIERNO MUNICIPAL DE LOÍZA

NOTICE OF INTENT
NATIONAL POLLUTANT DISCHARGE ELIMINATION SYSTEM (NPDES) PHASE II,
REGULATED SMALL MUNICIPAL SEPARATE STORM SEWER SYSTEMS (MS4's)

INDIVIDUAL PERMIT

MUNICIPALITY OF LOÍZA

EPA REGION 2 PUERTO RICO

PREPARED BY
ECOSTAHLIA CONSULTORES AMBIENTALES
SAN JUAN, PUERTO RICO

United States Environmental Protection Agency
National Pollutant Discharge Elimination System
Notice of Intent (NOI) for coverage under the Small Municipal Separate
Storm Sewer System (MS4) General Permit (PRR040051) for Puerto Rico

Part A. General Information

1. Name of Municipality or Organization: Municipality of Loíza
2. Type: Federal State Municipality Other: _____
3. Existing Permittee: Yes No If yes, provide EPA NPDES Permit Number: P R R 0 4 0 0 5 1
4. Location Address:
 - a. Street: 3 Calle Espíritu Santo
Casa Alcaldía, 2do Piso
 - b. City: Loíza State: PR Zip Code: 00772
5. Mailing Address:
 - a. Street: P.O. Box 508
 - b. City: Loíza State: PR Zip Code: 00772
6. Telephone Number: 787-876-1040 Fax: _____
7. E-mail: alcaldesa@municipiodeloiza.net
8. Standard Industrial Classification (SIC) Code (see instructions for common codes): 9199
9. Latitude: (use the format provided.) Longitude: (use the format provided.)
2.2.4.2 Approximate center of the regulated portion of the MS4.
18° 25' 51.7" N (degrees, minutes, seconds) 65° 52' 46.44" W (degrees, minutes, seconds)

Part B. Primary MS4 Program Manager Contact Information

1. Name: Luis R. Ortiz Escobar
2. Position Title: Vice Mayor
3. Stormwater Management Program (SWMP) Location (web address or physical location):
Vice Mayor Office, calle Espíritu Santo # 52, Loiza, PR 00772
4. Mailing Address:
 - a. Street: P.O. Box 508
 - b. City: Loíza State: PR Zip Code: 00722

5. Telephone Number: 787-876-1040

6. E-mail: lortiz@municipiodeloiza.net

Part C. Eligibility Determination

1. Endangered Species Act (ESA) determination complete? Yes No
- a. Eligibility Criteria (check all that apply): A B C D E F
2. National Historic Preservation Act (NHPA) determination complete? Yes No
- a. Eligibility Criteria (check all that apply): A B C D

Part D. Map/Boundaries

1. MS4/Organization Description of regulated boundaries (narrative):

The Municipality of Loíza is located in the north-east side of the island at Latitude 18° 25' 11" North, 65° 52' 23" West. It has population of 30,060 (2010 CENSUS) and a total land extension of 65.60 square miles. Loíza is bounded to the north with the Atlantic Ocean; south with Canóvanas Municipality; west with Carolina Municipality; and to the east with Río Grande Municipality. Loíza is divided into six (5) wards: Torrecillas Baja, Canóvanas (Villas de Loíza), Medianía Baja, Medianía Alta and Pueblo.

The soil associations of Loíza are Swamps-Marshed, Caguabo-Mucara-Naranjito and Cataño-Aguadilla. The terrain is nearly uniformly level since it does not surpass 100 meters (328 feet) above sea level. Loíza is located in the geographic region of the North Coastal Plains (the Atlantic coast). The rivers that cross the Loíza Municipality are: Río Grande de Loíza and Herrera rivers, the Herrera river serves as the border with the municipality of Rio Grande to the east; two lagoons also compose the Loíza's hydrology system: the Piñones and La Torrecilla lagoons. La Torrecilla is shared with the municipality of Carolina to the west. The south of Loíza is dominated by great marshy extensions of land, agricultural lands, a system of drainage canals and channels that communicate natural flood plains between the Loiza and Herrera rivers.

The Municipality of Loíza operates a municipal separate storm sewer system located in the urban area of the Municipality. The municipal urban zones in the 2010 CENSUS Urbanized Area Maps includes the urban zones of Loíza pueblo, Suárez and Vieques communities. Combined, they have a population of 9,122 and a territorial extension of approximately 1.02 square miles. The main users of the Loíza MS4 are residential communities and small business. Approximately 7 schools, 1 hospital and 1 industrial lot have been identified within the delineated urban area of Loíza. The primary pollutant sources of the Loíza MS4 are sediments, trash and illegal sanitary connections.

The Municipality of Loíza Storm Water Sewer System in the urban zone consist of a series of open channel culverts and catch basins, located within the right of-way of municipal roads, interconnected by underground concrete pipes (18", 20", 24" and 36") which normally discharge to wetland areas, the Río Grande de Loíza, infiltrates into the sandy terrain or evaporates.

The Urban Area of the Loíza Municipality is divided into three watersheds.

Watershed no. 1 consists of the Pueblo Ward urban zone. This area drains to the west and discharges directly into the Río Grande de Loíza river mouth through four (4) discharge points.

Watershed no. 2 consists of the area north of PR-187. This area comprises Loíza Gardens Apartments, Santillana del Mar sector, Suarez Community, Medianía Alta sector, and Vieques Community. The runoff generated on these areas, either infiltrates directly into the sandy soil or slowly evaporates when it accumulates in small depressions on the terrain. The Atlantic Ocean borders this whole area but the area is separated by sand dunes and natural buffer zones therefore most municipal streets do not drain directly towards the sea by superficial flow or underground pipes. For this area only the

Suárez and Vieques communities form part of the urban zones of the Municipality in the 2010 CENSUS Urbanized Area Maps.

Watershed no. 3 consists on the area south of PR-187. This area comprises the Miñi Miñi Community, Santiago Apostol sector, El Cabo Community, Estancias del Río sector, Palmarenas sector and the industrial lot. The runoff generated on these areas drains to the south towards marshy extensions of land. None of these communities form part of the urban zones of the Municipality in the Urbanized Area Map of the 2010 CENSUS.

2. Location Map/Boundaries. A location map must be attached showing the pertinent city, town, wards, or boundaries, the boundaries of the Small MS4, including surface water body(s), and the "urbanized area" (UA) when applicable.

Is map attached? Yes No

Part E. MS4 Infrastructure (if covered under the 2006 general permit)

1. Estimated Percent of Outfall Map Complete? (*Section 4.2.3 of 2006 general permit*): 0 %
- a. If 100% of 2006 requirements are not met, enter an estimated date of completion: 06/30/2018
(MM/DD/YYYY)
- b. Web address where MS4 map is published:
If outfall map is unavailable on the internet an electronic or paper copy of the outfall map must be included with NOI submission.

Part F. Bylaw/Ordinance Development (if covered under the 2006 general permit)

1. Illicit Discharge Detection and Elimination (IDDE) authority adopted? Yes No
- a. Effective Date or Estimated Date of Adoption: 12/31/2017
(MM/DD/YY)
2. Construction/Erosion and Sediment Control authority adopted? Yes No
- a. Effective Date or Estimated Date of Adoption: 12/31/2017
(MM/DD/YYYY)
3. Post-Construction Stormwater Management adopted? Yes No
- a. Effective Date or Estimated Date of Adoption: 12/31/2017
(MM/DD/YYYY)

Part G. Receiving Waters

List the names of all surface waterbody segments to which your MS4 discharges. For each waterbody segment, please report the number of outfalls discharging into it and, if applicable, any impairments. You may attach additional information.

Waterbody Segment that receives flow from the MS4	Number of Outfalls into receiving waterbody segment	Have any monitoring been performed to outfalls? (Yes/No)	List of Pollutant(s) causing impairment (if applicable)	List of TMDL Pollutant (s) (if any)
Río Grande de Loíza river mouth	5 identified during 2015 when the program was resumed.	No	The river mouth segment inside the Municipality jurisdiction does not appear impaired in the 2016 PREQB 303d list.	TMDL for the Loíza river not included in the segment inside the Municipality.
Marshes and unidentified water body segments related to the San Juan Bay Estuary (PREE13A3)	2 identified during 2015 when the program was resumed.	No	Ammonia (0600) Copper (0530) Enterococcus Bacteria (1700) Fecal Coliforms (1700) Lead (0550) Low Dissolved Oxygen (1200) Mercury (0550) Oil & Grease (1900) pH (1000) Surfactants (0400) Thermal Modifications (1400) Total Nitrogen (0920) Total Phosphorus (0910) Turbidity (2500)	None
Atlantic Ocean Punta Vacía Talega to Punta Miquillo (PREC16)	5 identified during 2015 when the program was resumed.	No	Low Dissolved Oxygen (1200) Turbidity (2500)	None
Río Herrera Estuary (PREE15A)	Not surveyed.	No	Surfactants (0400)	Fecal coliform (2012)
Atlantic Ocean Punta Las Marías to Punta Cangrejos (PREC14)	Not surveyed.	No	pH (1000) Turbidity (2500)	None

Part H. Summary of Stormwater Management Program (SWMP) under the 2006 Small MS4 General Permit
For every measurable goal and associated Best Management Practice (BMP) listed in the adopted program, provide the following information (You may include additional pages):

BMP Description or BMP ID (e.g. MCM-1)	Goal Achieved? (Yes/No)	Continued in next permit cycle? (Yes/No)	Who was the targeted audience? Explain reason for not achieving goal.	Modification(s) to goals or BMP for next permit cycle
MCM-1 Public Education & Outreach				
School education campaign	No	Yes	Public Meetings, School Lectures	Number of residents attending the events. To target 200 students every year city-wide.
Distribution of storm water material	No	Yes	General public. The lack of available funding.	The Municipality will allocate funds to continue this task during the new cycle.
MCM-2 Public Involvement & Participation				
Annual cleanup	Yes	Yes	General Public. The targeted goal was achieved.	
MCM-3 Illicit Discharge Detection and Elimination Program				
Storm sewer map	No	Yes	Ongoing process. The lack of available funding.	The Municipality will allocate funds to continue this task during the new cycle.
IDDE program	No	Yes	Problem areas in the Municipality. Activities to detect illicit discharges where started with the help of a contractor in 2015 and continued in 2016.	The Municipality plans to continue implementing the program.
Program to detect and eliminate illegal dumping	Yes	Yes	City wide. The Municipality conducts periodic cleaning of illegal dumping sites.	The efforts will continue during the new cycle.
Program to detect and eliminate illegal wastewater connections	No	Yes	Problem areas in the Municipality. Activities to detect illicit discharges where started with the help of a contractor in 2015 and continued in 2016.	Part of the IDDE program. The Municipality plans to continue implementing the program.

Part H. Summary of Stormwater Management Program (SWMP) under the 2006 Small MS4 General Permit
 For every measurable goal and associated Best Management Practice (BMP) listed in the adopted program, provide the following information (You may include additional pages):

BMP Description or BMP ID (e.g. MCM-1)	Goal Achieved? (Yes/No)	Continued in next permit cycle? (Yes/No)	Who was the targeted audience? Explain reason for not achieving goal.	Modification(s) to goals or BMP for next permit cycle
Program to detect and eliminate SSO	Yes	Yes	City wide.	Problems with SSO will be continued to be notified to PRASA.
Program to detect and eliminate failing septic tanks	No	Yes	Citywide and Villa Cristiana	Will continue as planned
MCM-4 Construction Site Storm Water Runoff Control				
Site inspection and enforcement	No	Yes	City wide	Will continue as planned
Require electronic copies of sanitary and sewer systems layout	No	Yes	Lack of IT capabilities	Will continue as planned
Inspection of sanitary sewer connections	Yes	Yes	City-wide	Will continue as planned
Inspection and enforcement of storm water requirements at construction sites	Yes	Yes	City-wide	Will continue as planned
Procedures for reviewing constructions site plans	No	Yes	City-wide. Lack of personnel	Will continue as planned

Part H. Summary of Stormwater Management Program (SWMP) under the 2006 Small MS4 General Permit

For every measurable goal and associated Best Management Practice (BMP) listed in the adopted program, provide the following information (You may include additional pages):

BMP Description or BMP ID (e.g. MCM-1)	Goal Achieved? (Yes/No)	Continued in next permit cycle? (Yes/No)	Who was the targeted audience? Explain reason for not achieving goal.	Modification(s) to goals or BMP for next permit cycle
MCM-5 Post Construction And Re-Development Storm Water Program				
BMP inspection and maintenance	No	Yes	City-wide. Lack of personnel	Will continue as planned
MCM-6 Pollution Prevention and Good Housekeeping				
Municipal employees training	Yes	Yes	Employees and supervisors from Municipal Public Works. Employees received trainings twice a year.	The trainings will continue during the next cycle.
Street cleaning program	Yes	Yes	City wide.	The Municipality will continue with the cleaning labors and goals.
Storm drain cleaning program	Yes	Yes	City-wide	The Municipality will continue with the cleaning labors and goals.
Spill response and prevention program	No	Yes	City-wide. Lack of personnel.	Will continue as planned.
Used oil recycling program	Yes	Yes	Municipal operations and general public.	The Municipality is constantly maintaining its used oil tank in the Public Works facility.
Recycling program	Yes	Yes	City-wide.	The Municipality will continue as planned.
Vehicle maintenance program	Yes	Yes	Municipal fleet. The Municipality only does light and routine maintenance labors. Heavy mechanical labors are done through a private service provider.	The Municipality is constantly maintaining the fleet.

Part I. 2016 Stormwater Management Program (SWMP) Summary

Public Education and Outreach (See Section 2.4.2 for detailed information of required BMPs):

BMP Description or BMP ID (e.g. MCM-1)	Education Topic (Identify the issue your BMP is educating the public about.)	Outreach Method (Describe the method used to convey this topic, e.g. mailing, events, school, etc.)	Measurable Goal (What is the end result of this program? What indicator will determine the goal has been met? (e.g., number mailing sent, people at event, class participation, etc.)
BMP-1 Storm Drain Stenciling Program	Non-Point Sources and Illegal Discharges	Storm Drains Stenciling	Number of storm water inlets painted and volunteers participating. The target is to have a minimum of 50 drains marked on yearly basis.
BMP-2 Annual Cleanup	Non-Point Sources	Volunteer and residents' participation	Number of tons of debris and recyclables collected during the cleanup events. The target is to collect 1 ton per year but to reduce the amount based in the success of the program.
BMP-3 Public Education Program	Illegal Discharges, Non-Point Sources and Erosion Control	Public Meetings, School Lectures	Number of residents attending the events. To target 200 students every year city-wide.
BMP-4 Community Hotline	Illegal Discharges and Non-Point Sources	Thru the general outreach activities, the Municipality encourages the use of the hotline to address the problems.	Number of calls and referrals to correct illegal discharges and non-point sources of pollution.
BMP-5 Social Media Education Campaign	Illegal Discharges, Non-Point Sources and Erosion Control	Posting of educational clips and messages in Facebook, Twitter, Instagram and Snapchat	Number of messages distributed, shared and viewed on a weekly basis.

Part I. 2016 Stormwater Management Program (SWMP) Summary (continued)**Public Involvement and Participation** (See Section 2.4.3 for detailed information of required BMPs):

BMP Description or BMP ID (e.g. MCM-1)	Program Description (Describe the program and how it will inspire public participation, e.g. special events, volunteer sampling and monitoring efforts, household hazardous waste recycling, etc.)	Measurable Goal (What is the end result of this program? What indicator will determine the goal has been met? (e.g., participation, amount of sampling performed, waste collected, etc.)
BMP-1 Storm Sewer System Map	Then Municipality is required to develop an inventory of all municipal stormwater infrastructure.	Create a map inventory of all the stormwater infrastructure in the urban area of the Municipality.
BMP-2 Implement Regulations to Enforce Non-Storm Discharges	The Municipality of Loíza is working to complete the approval and adoption of three (3) ordinances and their regulations addressing Illegal Discharges, and Erosion from Construction Projects.	It is expected that the ordinances and their regulations get approved by the end of 2016 or in the first semester of 2017.
BMP-3 Meet with Local Community Groups and Organizations to Involve them in Stormwater Efforts	The Municipality propose the use of public meetings through the community as a mean to request their involvement in the efforts coordinated by the administration.	The number of volunteers and the total number of communities covered during the public meetings.
BMP-3 Develop and conduct periodical focus groups to discuss the current issues related to pollution from stormwaters	The Municipality propose the use of focus groups through the community as a mean to request their involvement in the efforts coordinated by the administration.	The number of volunteers participating during the focus groups and the number of issues identified and fixed.
BMP-4 Conduct Public Hearings to address Stormwater issues	The Municipality propose conducting a yearly Public Hearing to address the most pressing issues related to pollution from Stormwater runoff.	The number of participants and issues identified and resolved as a result from the Public Hearing.

Part I. 2016 Stormwater Management Program (SWMP) Summary (continued)

Illicit Discharge Detection and Elimination (See Section 2.4.4 for detailed information of required BMPs):

BMP Description or BMP ID (e.g. MCM-1)	Program Description (Describe the program and how it will identify and remove illicit connections from the MS4, e.g. new regulations, investigation practices, removal of illicit connections, etc.)	Measurable Goal (What is the end result of this program? What indicator will determine the goal has been met? (e.g., adoption of bylaws/ordinances, amount of investigation performed, identified and removed illicit connections, etc.)
BMP-1 Prepare and implement an ordinance targeting illegal discharges at the storm sewer system	The Municipality propose to present a local ordinance and the necessary regulation targeting illegal discharges into the storm sewer system.	The number of discharges identified and corrected on a yearly basis.
BMP-2 Adopt a Stream Program	The Municipality propose the development of an adoption program with local partners aimed to target one of the water bodies located within the urban area of Loíza.	The number of streams or meters adopted and the improvement of the surface water quality of the streams.
BMP-3 MS4Web Permit Manager Tool	Loíza propose the use of the MS4Web Permit Manager as a mean to provide local residents and municipal managers with an internet based tool to access data on illegal discharges and all storm water outfalls in the city and how to address the issue of illegal discharges.	Number of residents and local managers using the Internet-based tool.
BMP-4 Used Oil Recycling Program	The Municipality of Loíza will implement the Cease the Grease Program as part of the city-wide effort to reduce the illegal discharge of used cooking oil in the storm sewer system and surface water bodies.	The number of gallons of used cooking oil recycled city-wide
BMP-5 Basic Surface Water Quality Monitoring Project	A basic surface water quality monitoring program will be established in a selected stream using parameters like pH, Temperature and Fecal Coliforms	Data from streams will be compared to data obtained on a regular basis by the PR Environmental Quality Board

Part I. 2016 Stormwater Management Program (SWMP) Summary (continued)

Construction Site Stormwater Runoff Control (See Section 2.4.5 for detailed information of required BMPs):

BMP Description or BMP ID (e.g. MCM-1)	Program Description (Describe the program and how it will help control stormwater runoff at construction sites, e.g. new regulations, construction practices, inspection protocols, etc.)	Measurable Goal (What is the end result of this program? What indicator will determine the goal has been met? (e.g., adoption of bylaws/ordinances, amount of inspections performed and sites actively regulated, etc.)
BMP-1 Ordinance to control runoff from construction sites	The Municipality will prepare, approve and adopt an ordinance specifically targeting runoff from construction sites impacting the stormwater sewer system covered by the permit.	The number of interventions and sites corrected. 100% inspection rate city-wide.
BMP-2 Construction Sites Annual Inventory	Then Municipality is required to develop an inventory of all public and private construction projects. The local government propose the use of the MS4Web Permit Manager to create and maintain the inventory identifying all construction sites. The tool helps the local managers to update the information as needed. All documents associated with the projects will be added in PDF format during the inspections and will be ready available to the inspectors.	The number of projects identified and certified ion compliance with the permit.
BMP-3 Development of SOPs for Construction Permits.	The Municipality propose the development of a Construction SOP aimed to provide developers with new means to address regulation requirement and for inspectors to identify deficiencies during inspections.	Number of Projects city-wide visited and brought into compliance with local ordinance and USEPA regulations.
BMP-4 BMPs during construction Poster	The Municipality will prepare and distribute a poster aimed to contractors and construction projects with BMPs specifically design to reduce impacts to the stormwater runoff from construction activities.	A 100% coverage of active and permitted construction projects city-wide.

Part I. 2016 Stormwater Management Program (SWMP) Summary (continued)

Post-Construction Stormwater Management in New Development and Redevelopment (See Section 2.4.6 for detailed information of required BMPs):

BMP Description or BMP ID (e.g. MCM-1)	Program Description (Describe the program and how it will control stormwater runoff from properties after they are developed, e.g. new regulations, practices, or resources for contractors to use Low Impact Development (LID), etc.)	Measurable Goal (What is the end result of this program? What indicator will determine the goal has been met? (e.g., adoption of bylaws/ordinances, amount of implemented practices, development of capacity building resources, etc.)
BMP-1 Ordinance to control runoff pollution from post-construction projects	The Municipality will prepare, approve and adopt an ordinance specifically targeting runoff from post-construction projects impacting the stormwater sewer system covered by the permit.	The number of interventions and sites corrected. 100% inspection rate city-wide.
BMP-2 Standard Operating Procedures for Post-Construction Projects	The Municipality of Loíza propose to develop procedures to avoid runoff impacts to nearby surface waterbodies from stormwater controls located on completed construction projects. This will include impacts from retention ponds or non-covered areas prone to high rates of sedimentation.	Number of projects visited and certified in compliance with local ordinances and USEPA regulations.
BMP-3 Brochures	A series of brochures will be developed to be distributed among residents and managers of new and old housing and apartment projects city-wide aimed to educate them in good practices to avoid impacts to the existing stormwater infrastructure.	To distribute no less than 100 copies on a yearly basis.

Part I. 2016 Stormwater Management Program (SWMP) Summary (continued)

Good Housekeeping and Pollution Prevention in Municipal Operations (See Section 2.4.7 for detailed information of required BMPs):

BMP Description or BMP ID (e.g. MCM-1)	Program Description (Describe the program and how it will mitigate stormwater runoff at municipal properties or through municipal activities, e.g. installation of structural stormwater controls on the municipal properties, new practices to reduce pollutant exposure to rain events, runoff management, trainings, etc.)	Measurable Goal (What is the end result of this program? What indicator will determine the goal has been met? (e.g., structural BMPs installed, SOPs developed and implemented, etc.)
BMP-1 Trainings for Municipal Employees	The Municipality will provide trainings on BMPs for mechanics, green-areas workers, painters, electricians, and clerical employees on how to address simple issues identified in the daily tasks of Municipal Operations. The trainings will cover oil, paint and fuel spills, emergency response, good housekeeping, material storage, and record keeping.	The Municipality will provide their employees with two (2) workshops/trainings every year addressing BMPs and their responsibility under the USEPA-NPDES Permit.
BMP-2 SOPs for Municipal Operations	The Municipality will develop and implement the required Standard Operation Procedures for all the operations and maintenance activities conducted daily at Municipal Public Works. The SOPs will cover all activities that may have an impact on the NPDES-MS4 permit.	Number of inspections completed and certified in compliance with local ordinances and USEPA regulations.
BMP-3 SOPs for Municipal Facilities	The Municipality will develop and implement the required SOP for the operation of municipal facilities including parks and open space maintenance, sidewalks, streets and roads; and auto yards.	Number of inspections completed and certified in compliance with local ordinances and USEPA regulations.
BMP-4 Webinars on Water Quality BMPs	The Municipality propose offering a webinar to municipal employees on simple BMPs designed to protect their surface water resources.	The number of participants and efforts developed by the employees after the webinar.

Part J. Application Certification and Signature

I certify under penalty of law that this document and all attachments were prepared under my direction or supervision in accordance with a system designed to assure that qualified personnel properly gathered and evaluated the information submitted. Based on my inquiry of the person or persons who manage the system, or those persons directly responsible for gathering the information, the information submitted is, to the best of my knowledge and belief, true, accurate, and complete. I am aware that there are significant penalties for submitting false information, including the possibility of fine and imprisonment for knowing violations.

Signature of Mayor/Elected Official: _____

Print Name of Mayor/Elected Official: Julia M. Nazario FuentesTitle: MayorDate: 22 / junio / 2017

Loíza, PR

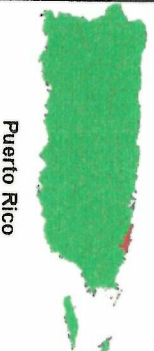
**Census 2010
Urbanized Areas**

- Legend**
- Loíza
 - Loíza
 - Urban Zones
 - Urban Zones
 - PR Urbanized Areas
 - Fajardo, PR
 - San Juan, PR

Projection: Lambert
Coordinate System: NAD83 PR StatePlane



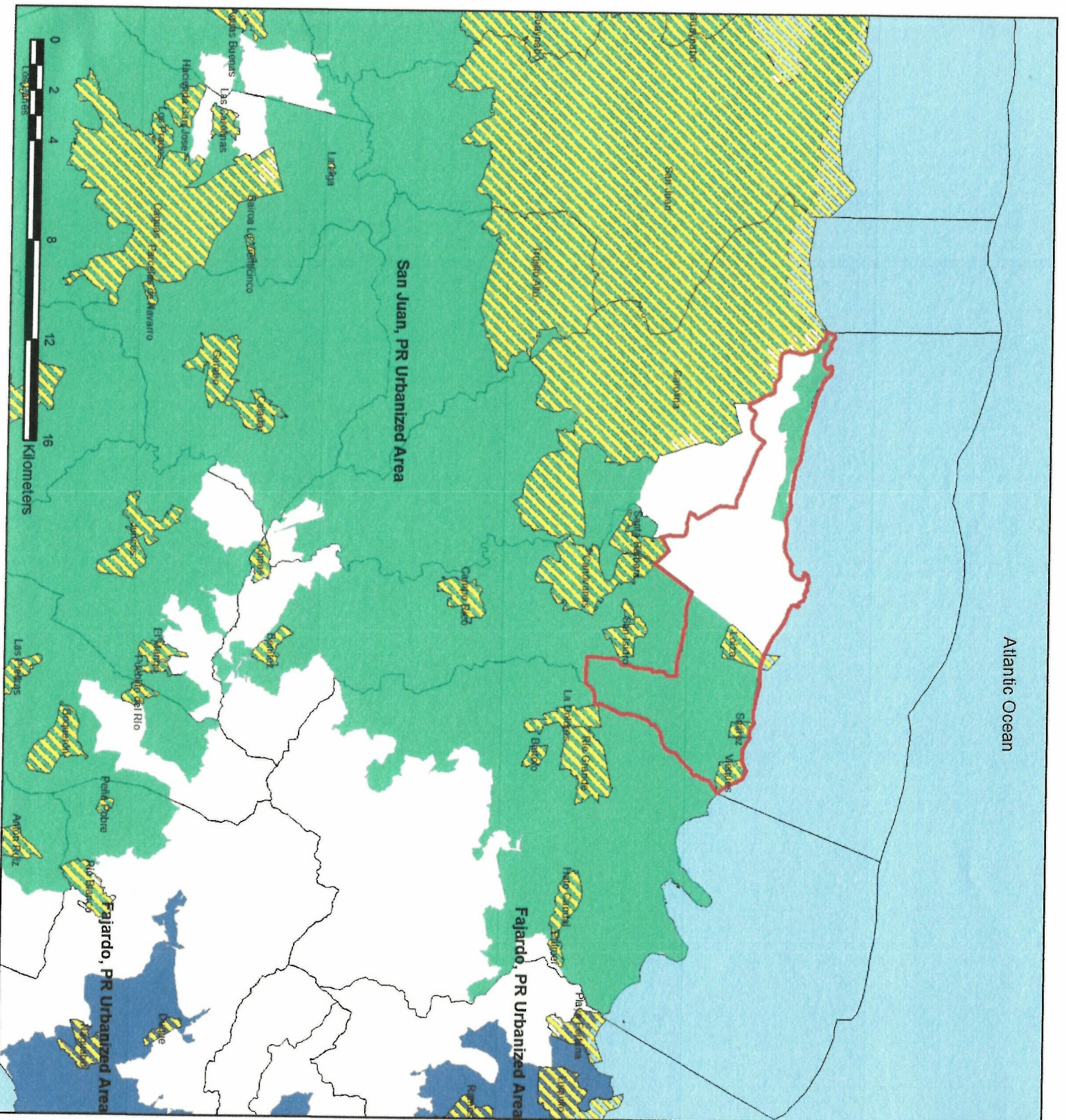
Source: JP, Census
1:200,415



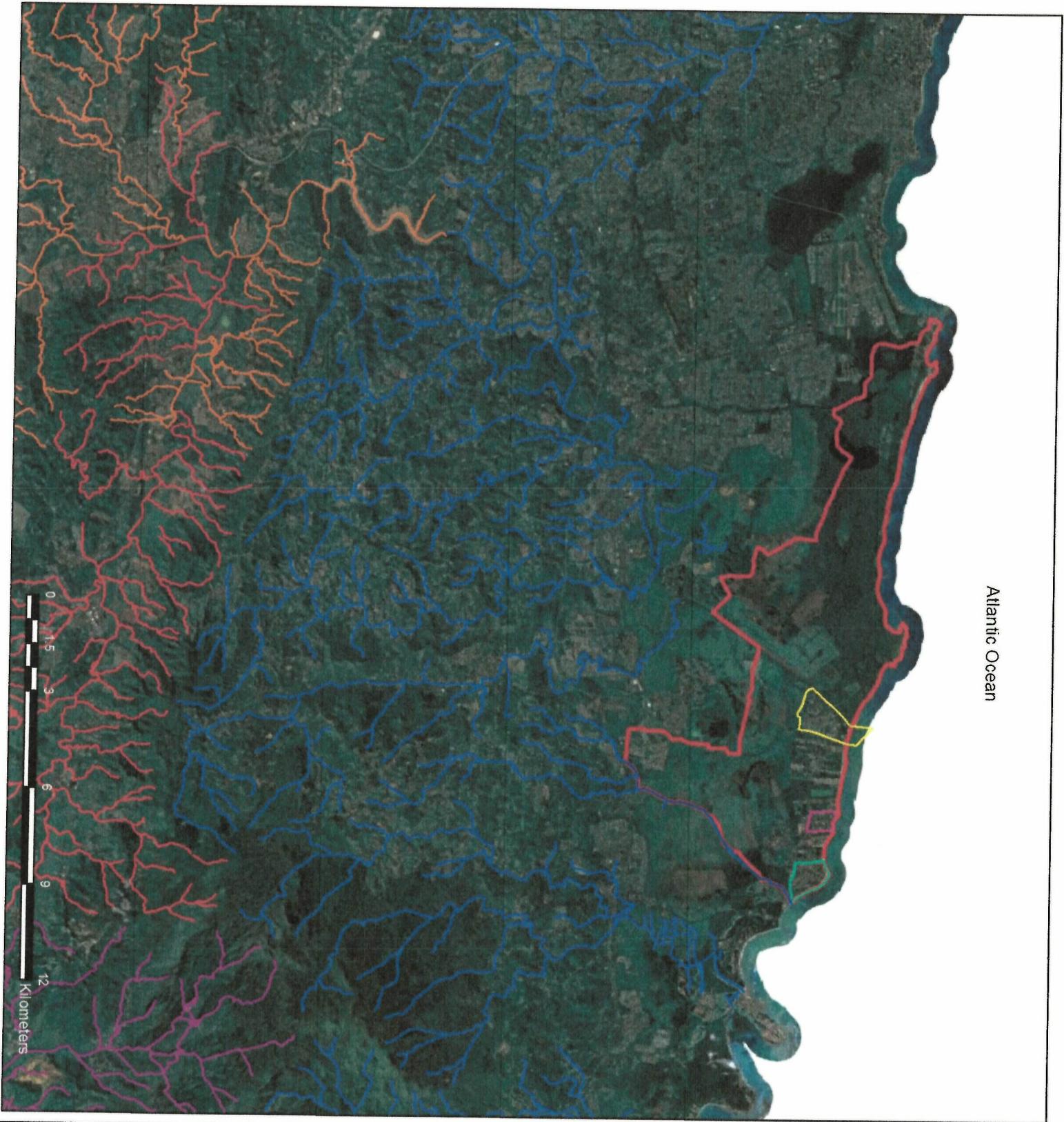
Puerto Rico



2017



Atlantic Ocean



Loiza PR TMDLs

- Legend**
- Loiza
 - TMDLs ID
 - 33749
 - 35082
 - 41091
 - 42515
 - Urban Zones
 - Loiza zona urbana
 - Suárez comunidad
 - Vieques comunidad

Projection: Lambert
Coordinate System: NAD83 PR StatePlane



Source: JP, CENSUS, EPA
1:158,813



Puerto Rico



2017

Atlantic Ocean



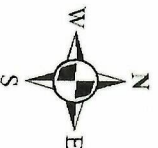
Municipio de

LOÍZA

Loíza's Hydrography

- Legend**
- Loíza
 - Hydrography
 - Urban Zones**
 - Loíza zona urbana
 - Suárez comunidad
 - Vieques comunidad

Projection: Lambert
Coordinate System: NAD83 PR StatePlane



Source: JP, CENSUS, DRNA
1:85,738



Puerto Rico



2017

Atlantic Ocean



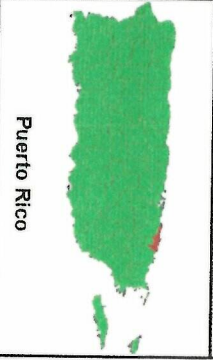
Loíza's Hydrography

- Legend**
- Loíza
 - Hydrography
 - Urban Zones
 - Loíza zona urbana
 - Suárez comunidad
 - Vieques comunidad

Projection: Lambert
Coordinate System: NAD83 PR StatePlane



Source: JP, CENSUS, DRMA
1:40,000

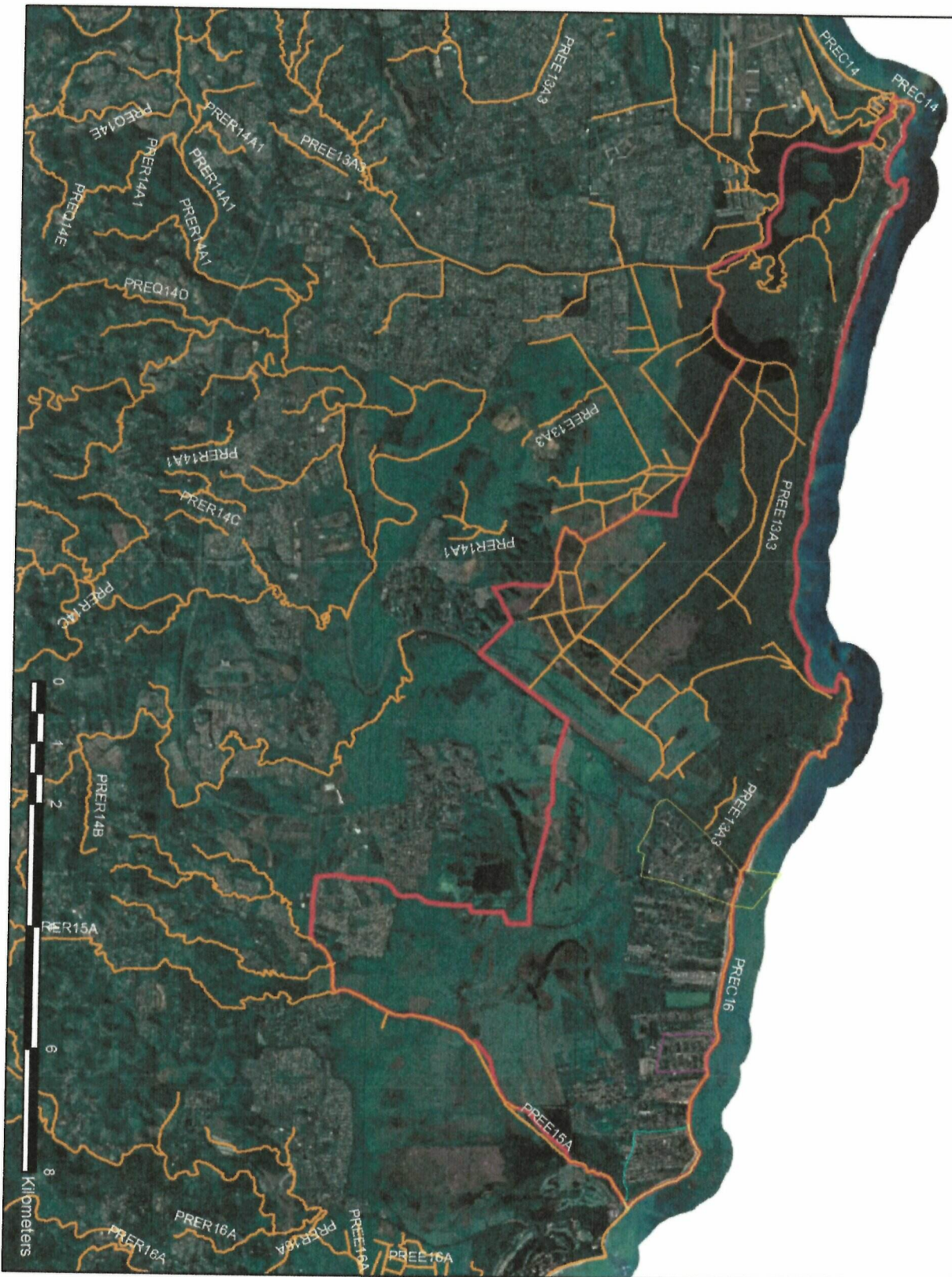


Puerto Rico



2017

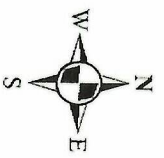
Atlantic Ocean



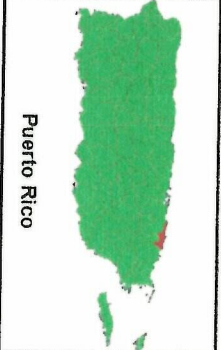
Loíza 303D List Segments

- Legend**
- Loíza
 - Hydrography
 - Urban Zones**
 - Loíza zona urbana
 - Suárez comunidad
 - Vieques comunidad

Projection: Lambert
Coordinate System: NAD83 PR StatePlane



Source: JP, CENSUS, EPA
1:95,113



Puerto Rico

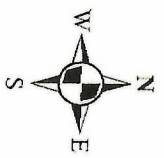




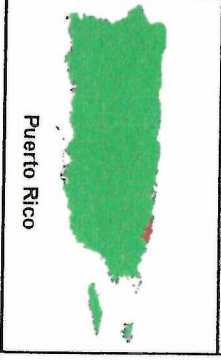
**Loíza's
USFW Wetlands**

- Legend**
- Loíza
 - Urban Zones
 - Loíza zona urbana
 - Suárez comunidad
 - Vieques comunidad
- WETLAND_TY**
- Estuarine and Marine Dependent
 - Estuarine and Marine Wetland
 - Freshwater Emergent Wetland
 - Freshwater Forest/Shrub Wetland
 - Freshwater Pond
 - Lake
 - Riverine

Projection: Lambert
Coordinate System: NAD83 PR StatePlane



Source: JP, CENSUS, USFW
1:92,255

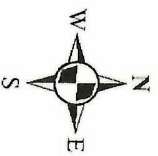




**Loíza's
USFW Wetlands**

- Legend**
- Loíza
 - Urban Zones**
 - Loíza zona urbana
 - Suárez comunidad
 - Vieques comunidad
 - WETLAND_TY**
 - Estuarine and Marine Wetland
 - Deepwater
 - Estuarine and Marine Wetland
 - Freshwater Emergent Wetland
 - Freshwater Forested/Shrub Wetland
 - Freshwater Pond
 - Lake
 - Riverine

Projection: Lambert
Coordinate System: NAD83 PR StatePlane



Source: JP, CENSUS, USFW
1:40,000



Puerto Rico



2017