

Update | April 2019



EnviroAtlas Update Bulletin

Keep up with the latest in EnviroAtlas news

IN THIS UPDATE

- New EnviroAtlas Communities | [Philadelphia](#), [Salt Lake City](#), [Sonoma County](#)
- Community [Fun Facts & Stats](#)

New EnviroAtlas Communities

We have 300+ national data layers and 100 community layers for 27 community areas. National data layers are frequently based on 30-meter resolution data, while community scale data are derived from 1-meter resolution land cover data for local scale planning and decision-making.

The latest community additions are Philadelphia, Salt Lake City, and Sonoma County.

Philadelphia, PA

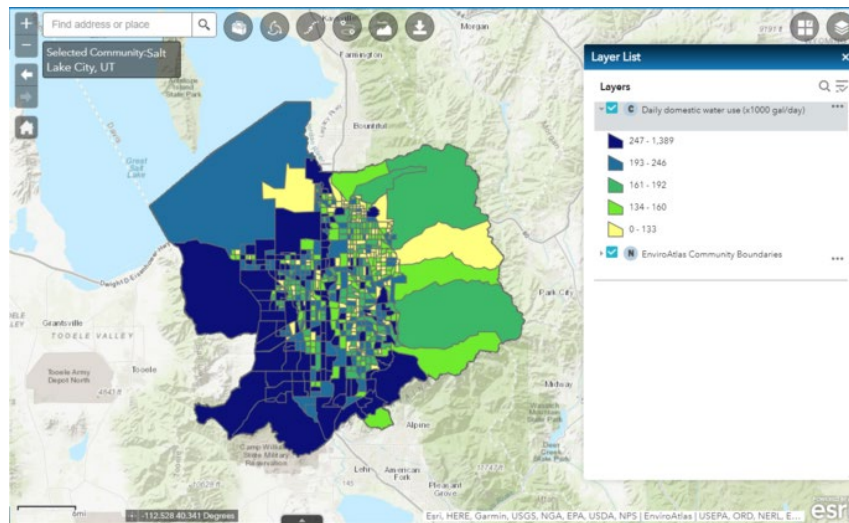


Acute respiratory cases avoided per year due to removal of particulate matter <2.5 microns (PM2.5) by tree cover.

- The Philadelphia community encompasses nearly 4,000 census block groups, expanding into several counties in NJ, MD, DE, and PA.
- Over 5.4 million people live and work in the Philadelphia area; 37% of those people are minorities.
- Philadelphia is positioned about 2.5 hours south of New York, on the Delaware river in the southeast corner of Pennsylvania. It is located within EPA Region 3.

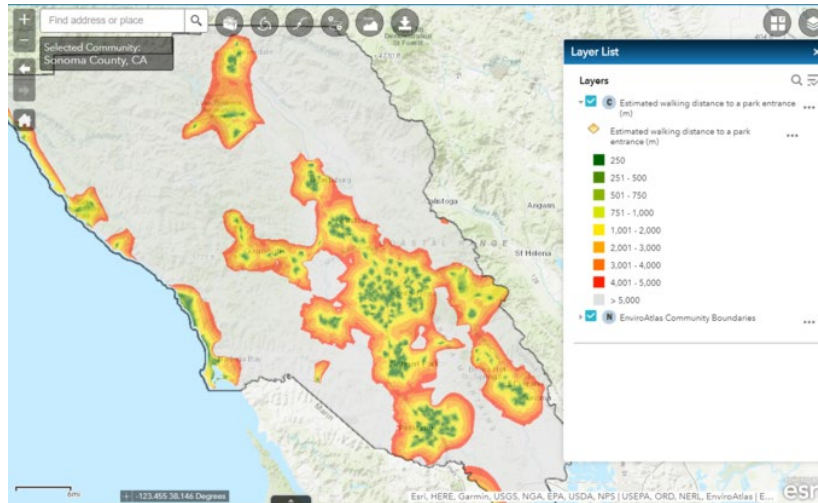
Salt Lake City, UT

- Salt Lake City is bordered by mountains and the Great Salt Lake; it has a highly variable local climate due to its position in the Rocky Mountains.
- An estimated 61 percent of the population lives within 300 meters of a high-speed roadway. This distance is within the zone of air pollutant drift from unobstructed roadways.



Daily domestic water use (x1000 gallons per day). Note the clear spatial division between southwest and northeast Salt Lake City in terms of its water use.

Sonoma County, CA



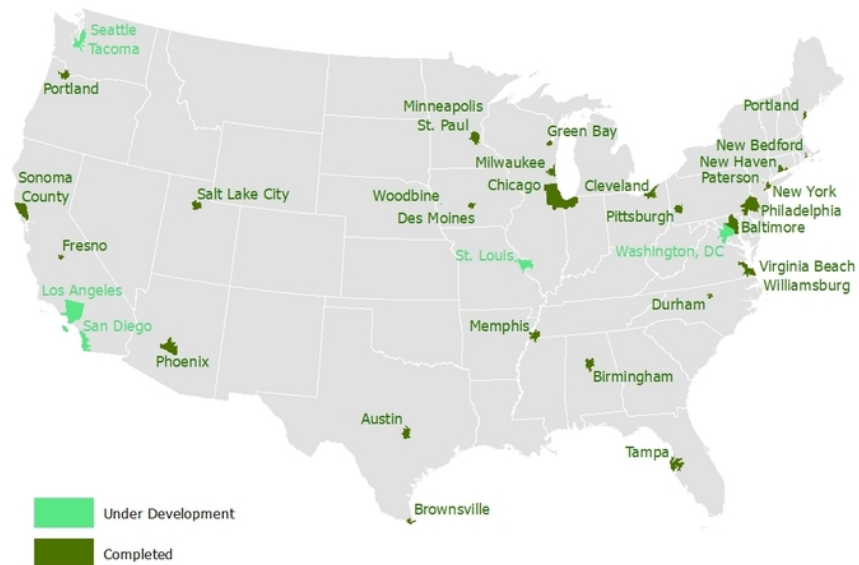
Estimated walking distance to parks in Sonoma County, CA

- Sonoma county covers a broad variety of elevation-driven microclimates and ecosystems including coastal plain, marsh, and high elevation mountain oak/scrub forest.
- Sonoma county is most widely known for its viticulture (winemaking) and agriculture, but it also provides a number of critical ecosystem services for the greater Bay area.
- The land cover data for Sonoma County were adapted from the [Sonoma Veg Map program](#).

[Explore the data for EnviroAtlas Communities in the Interactive Map >>](#)

Community Facts & Fun Stats

Did you know that EnviroAtlas includes fine-resolution data for [27 communities including roughly 1200 municipalities](#)? Fine scale data can be used by communities to aid decision-making and policy formation in city planning, transit, environmental health, green infrastructure, and more.



A map of all EnviroAtlas communities and communities currently in development.

Largest Community	Chicago, IL - 9,203,201 people
Smallest Community	Woodbine, IA - 1,555 people
Community with largest amount of ozone removed annually by tree cover	Philadelphia, PA - 13,097,476.24 kg/yr
Community with highest # daycare centers (given population)	Memphis, TN - 815 daycares
Community with lowest daily domestic water use (x1000 gallons/day) (given population)	Green Bay, WI - 9,457 x1000 gal/day
Community with the highest amount of green space per capita	Memphis, TN - 13,147 m ² /person
Community with greatest access to parks (Population within 500m of a park entrance/Total community population)	Woodbine, IA - 81% of population

All EnviroAtlas Communities

Click any of the community names below to open the fact sheet specific to that community.

- [Austin, TX](#)
- [Baltimore, MD](#)
- [Birmingham, AL](#)
- [Brownsville, TX](#)
- [Chicago, IL](#)
- [Cleveland, OH](#)
- [Des Moines, IA](#)
- [Durham, NC](#)
- [Fresno, CA](#)
- [Green Bay, WI](#)
- [Memphis, TN](#)
- [Milwaukee, WI](#)
- [Minneapolis / St. Paul, MN](#)
- [New Bedford, MA](#)
- [New Haven, CT](#)
- [New York, NY](#)
- [Paterson, NJ](#)
- [Philadelphia, PA](#)
- [Phoenix, AZ](#)
- [Pittsburgh, PA](#)
- [Portland, ME](#)
- [Portland, OR](#)
- [Salt Lake City, UT](#)
- [Sonoma County, CA](#)
- [Tampa, FL](#)
- [Virginia Beach/Williamsburg, VA](#)
- [Woodbine, IA](#)

[Explore the data for EnviroAtlas Communities in the Interactive Map >>](#)

EnviroAtlas provides geospatial data, easy-to-use tools, and other resources related to ecosystem services, their stressors, and human health.