



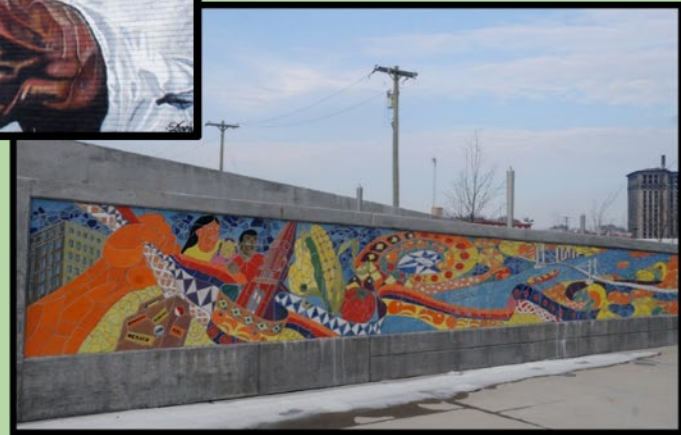
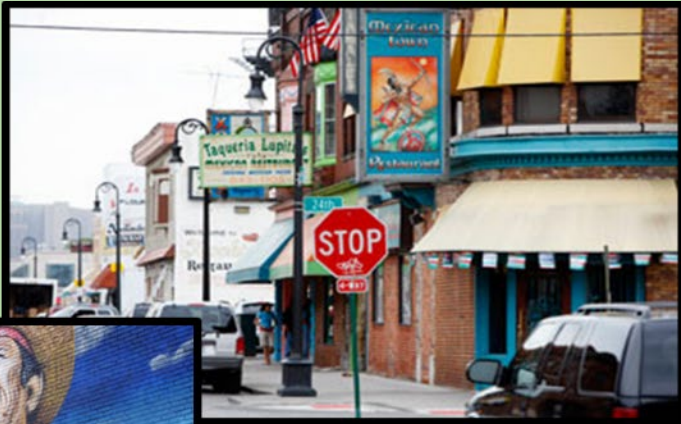
# **Southwest Detroit Approach to Cutting Diesel Emissions**

## **Community & Partners Engagement Session**

2019 Midwest Clean Diesel Initiative Steering  
Committee Meeting  
April 25, 2019 – U.S. EPA Region 5

Maggie Striz Calnin, Director – Healthy Air Program,  
Southwest Detroit Environmental Vision







# SOUTHWEST DETROIT



Highways  
Steel Mills  
Chemical Plants

Coal Fired  
Power Plants

Top 10 Busiest Int'l Border  
in North America

- 
- Automobile Plant
  - Waste Water Treatment Plant
  - Intermodal Freight Terminal
  - Oil Refinery
  - Port of Detroit
  - I-94; I-75; I-96



# WHAT WE DO

- Mission to improve the environment and strengthen the economy of Southwest Detroit
- Work in collaboration with residents, community organizations, government agencies, schools, businesses, and industry
- Focus on environmental issues including:
  - Improving indoor and outdoor air quality
  - Remediating blight (illegal dumping and graffiti\*)
  - Compatible neighborhood land use
  - Green stormwater infrastructure
  - Community sustainability projects
  - Community and youth engagement



# ECO – D CORE VALUES

We are all committed to:

- Prioritizing positive outcomes in equity, resilience, and climate protection
- Transgenerational community involvement and development of bi - directional leadership and professional skills
- Building vibrant, thriving places where we all want to live, work, and play
- Inclusive efforts of eco-friendly and sustainable developments to better the lives of Detroiters
- Making Southwest Detroit the Greenest Community in Detroit (replicable!)





# **ECO – D PRIORITIES**

## **WATER**

**Increase green stormwater infrastructure in neighborhoods**

## **LAND**

**Create more compatible neighborhood land uses and remediate blight**

## **AIR**

**Improve indoor and outdoor air quality**

## **COMMUNITY**

**Build more sustainable, connected communities and increase youth and community engagement**



# Healthy Air Program

- Direct pollution reduction
  - DERA grant projects and other diesel vehicle and equipment projects
  - Healthy Homes visits, training, resources (now includes Healthy Babies, Bright Futures)
  - Tree planting and land based projects
- Indirect pollution reduction
  - Community based participatory research
  - Public outreach/education (O&E)
  - Business and entity O&E
  - Policy-maker O&E
  - Collaboration w/ other NGOs



## Contact:

info@sdevweb.org

313-842-1961

Maggie Striz Calin

Maggie@sdevweb.org

313-241-6211



**Table 1.3 Types of Monitoring Conducted in 2017 and MASN Location**

Area	AIRS ID	Site Name	CO	NO <sub>2</sub>	Trace NO <sub>y</sub>	O <sub>3</sub>	PM <sub>10</sub>	PM <sub>2.5</sub>	PM <sub>2.5</sub> TEOM	PM <sub>2.5</sub> Speciation	SO <sub>2</sub>	Trace SO <sub>2</sub>	VOC	Carbonyls	Trace Metals	Wind Speed & Direction, Temp.	Relative Humidity	Solar Radiation	Barometric Pressure
Detroit-Ann Arbor	260910007	Tecumseh				√		√	√	√+E						√			√
	260990009	New Haven				√		√								√	√	√	
	260991003	Warren				√													
	261250001	Oak Park				√		√								√			
	261470005	Port Huron				√		√	√		√					√			
	261470031	Port Huron-Rural St.													√@+Pb				
	261610008	Ypsilanti				√		√	√							√			√
	261630001	Allen Park	√*		√	√	√	√	√	√+A		√			√@+Pb	√	√		√
	261630005	River Rouge					√							√	√@	√			
	261630015	Detroit-W. Fort St.					√	√		√	√		√	√	√@	√	√		√
	261630016	Detroit-Linwood						√											
	261630019	Detroit-E. 7 Mile		√		√		√								√	√		√
	261630025	Livonia						√											
	261630027	Detroit-W. Jefferson													√@				
	261630033	Dearborn					√	√	√	√+EA			√	√	√ + Pb	√	√		√
	261630036	Wyandotte						√											
	261630039	Detroit-W. Lafayette						√	√							√			
	261630093	Eliza Howell-Roadway	√	√		√										√			
	261630094	Eliza Howell-Downwind	√	√		√										√	√		√
	261630095	Livonia-Roadway	√	√				√								√	√		√
	261630097	NMH 48217							√		√		√		√ + Pb				

# Figure 1.1: 2017 MASN Monitoring Sites

