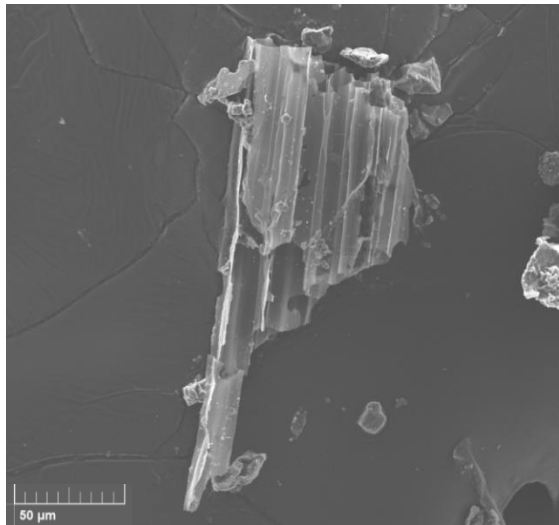


Potential Health Impacts of Particles and Gases Emitted by Wildfires

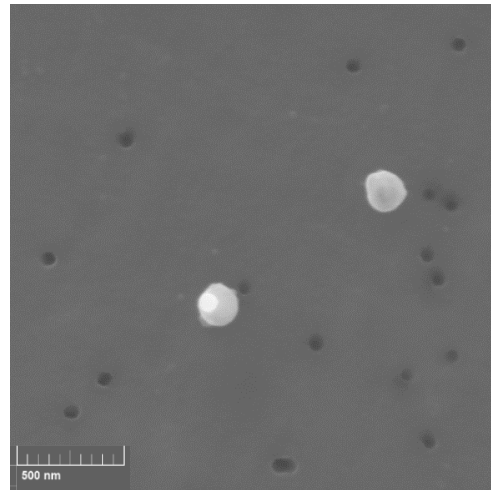
Jeff Wagner and Wenhao Chen

Environmental Health Laboratory, California Department of Public Health, Richmond, CA

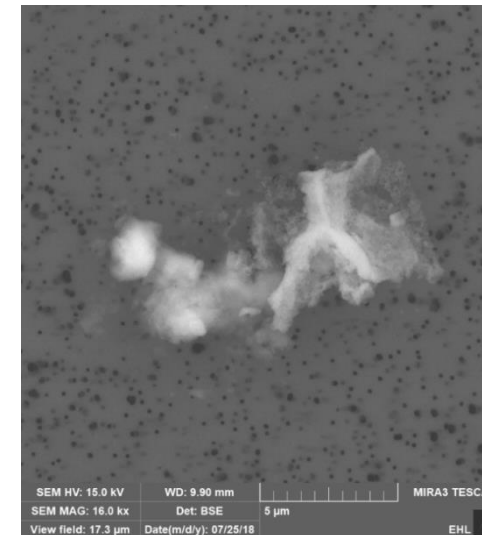
US EPA ORD *Clean Air Spaces* web summit, June 12, 2019, RTP, NC



2017 SF Bay Area wildfire smoke



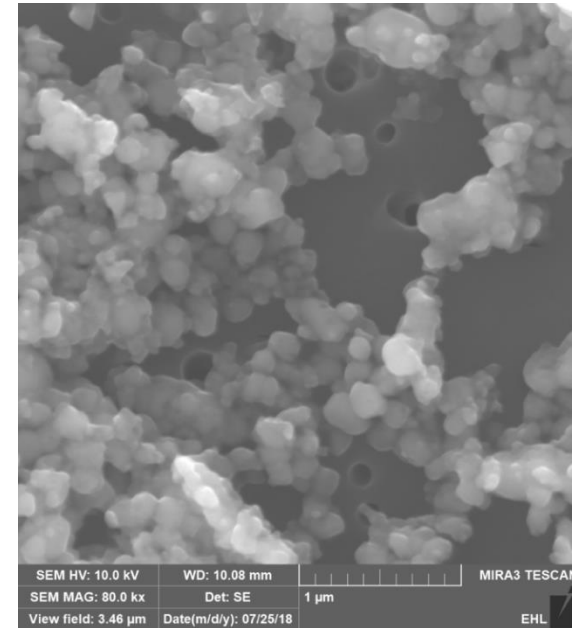
2018 SF Bay Area Wildfire Smoke



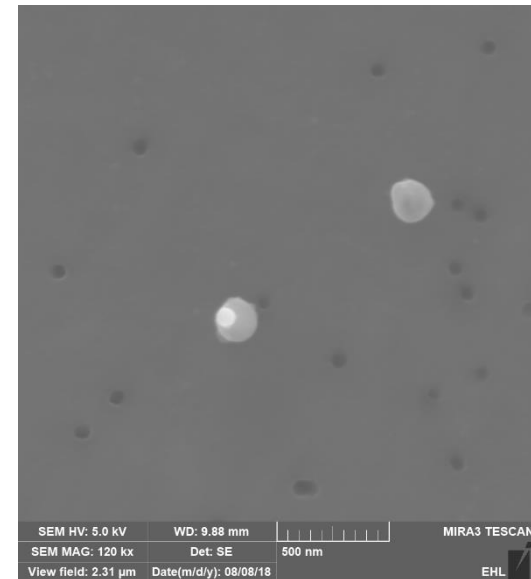
2018 SF Bay Area wildfire smoke

Presentation outline

1. Introduction / public health goals
2. Wildfire smoke and ash chemicals
3. Indoor air cleaner performance
4. Current EHL wildfire measurements
5. Conclusions



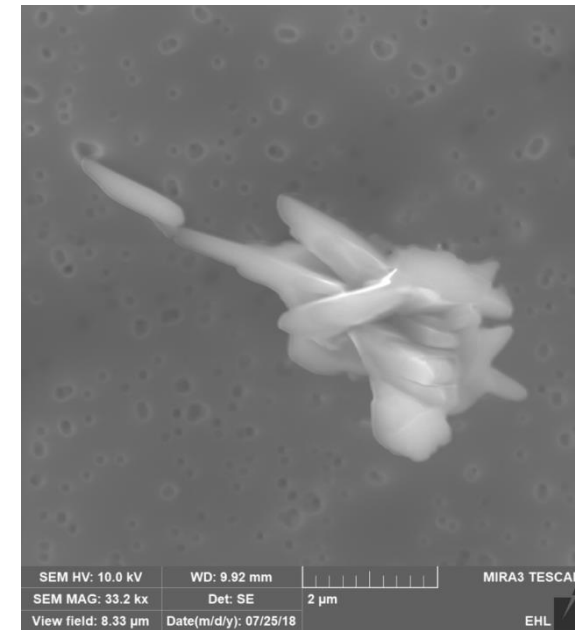
2017 SF Bay Area wildfire smoke



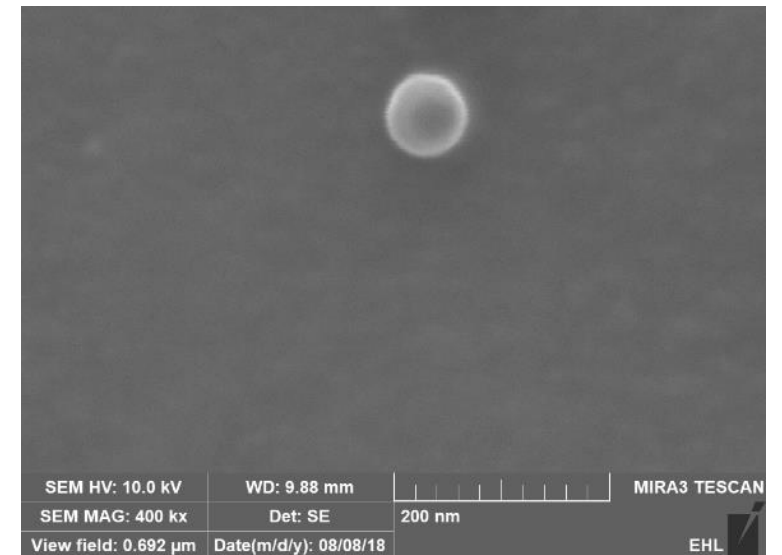
2018 SF Bay Area wildfire smoke

Introduction

- Need for improved **smoke & ash** chemical exposure assessment:
 - Unique chemical components of smoke/ash **may impact human health differently** than non-wildfire PM
 - AQI also may not be protective enough *if* any of these are significant:
 - PM_{10-2.5} (ash/metals) too large for PM_{2.5} AQI
 - ultrafine particles too small for PM_{2.5} sensors
 - toxic gases not included in most AQI calculations



2017 SF Bay Area wildfire ash



2018 SF Bay Area wildfire smoke

Introduction

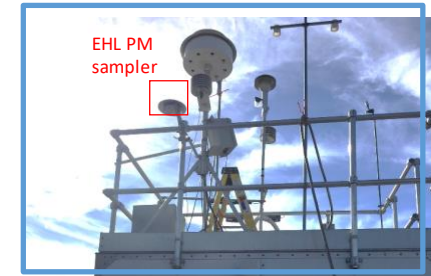
- **Known** wildfire health effects:
 - Wildland firefighters: **respiratory, neurological** symptoms after fires; longer-term **lung function** decrements (Austin, 2008; Domitrovich et al, 2017)
 - General public: acute exposure -> hospital admissions for **respiratory, cardiovascular, and cerebrovascular** events (Wettstein et al, 2018)
 - General PM_{2.5} (particulate matter <2.5 um) and PM_{10-2.5} (coarse PM):
 - acute and chronic **inflammation** -> respiratory and cardiopulmonary effects
 - increased **mortality, hospitalization, and asthma** emergency room visits, especially susceptible individuals (Pope and Dockery, 2006; Peters et al, 2011; Lee et al, 2006; Adar, 2014)
 - **PM2.5 and PM10 regs / AQI** based on chronic (**annual**) or daily (**24-hr**) health study findings
- **Unknowns:**
 - **<24-hr** smoke exposure
 - Cal/OSHA regulations = 8-hour “nuisance dust” limits ~ 1,000x public health limits
 - 60 min general PM_{2.5} exposures associated with increased cardiac arrhythmia (He et al, 2011)
 - **Chronic** exposure to smoke chemicals (Domitrovich et al, 2017)



Ranch Fire, Clearlake Oaks CA July 2018 (AP/Josh Edelson)

Introduction

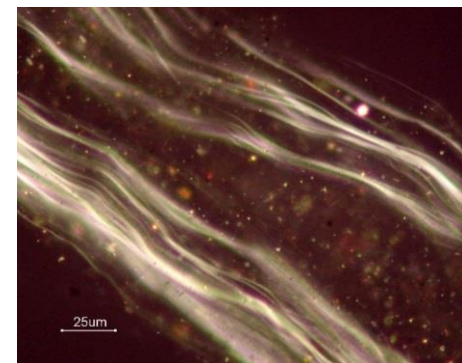
- **CDPH EHL** is characterizing physical / chemical forms of wildfire emissions to inform decision makers to best monitor and reduce public exposure
 - Smoke and ash measurements collected during 2017-18 wildfires, including home filters
 - Public data and combustion / aerosol science review
 - Identification of knowledge gaps
 - ID of other wildfire pollutants beyond PM2.5
 - Trainings for local and state agencies



2018 SF Bay Area Wildfire Smoke

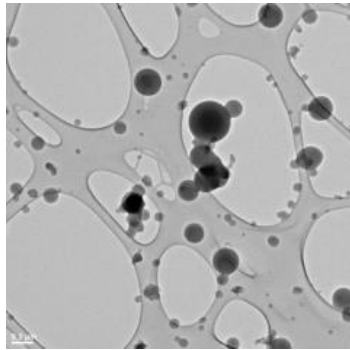


Crop burning + diesel

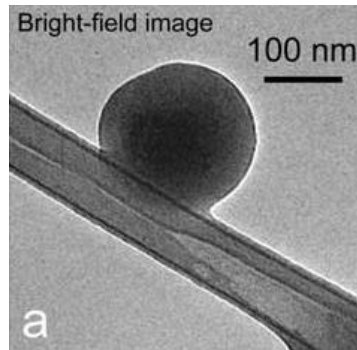


Asbestos from burned vehicle brakes

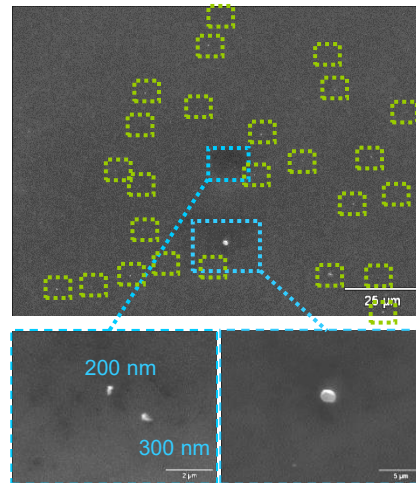
Wildfire particle type #1: Organic carbon



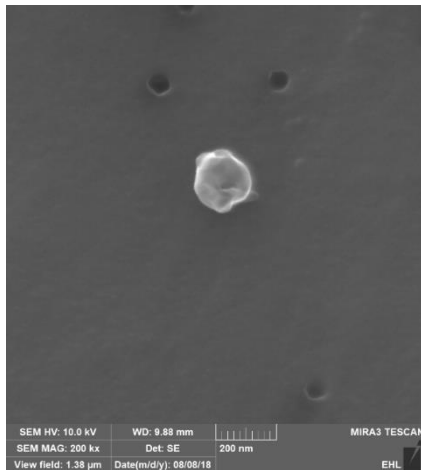
Nussbaumer et al, 2008



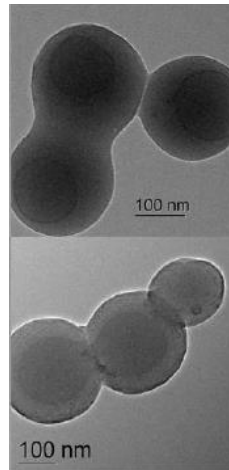
Posfai et al., 2004



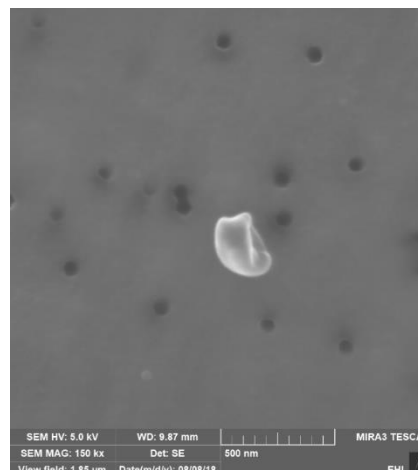
Wagner et al, 2012



2018 SF Bay Area wildfire smoke



Hand et al., 2005



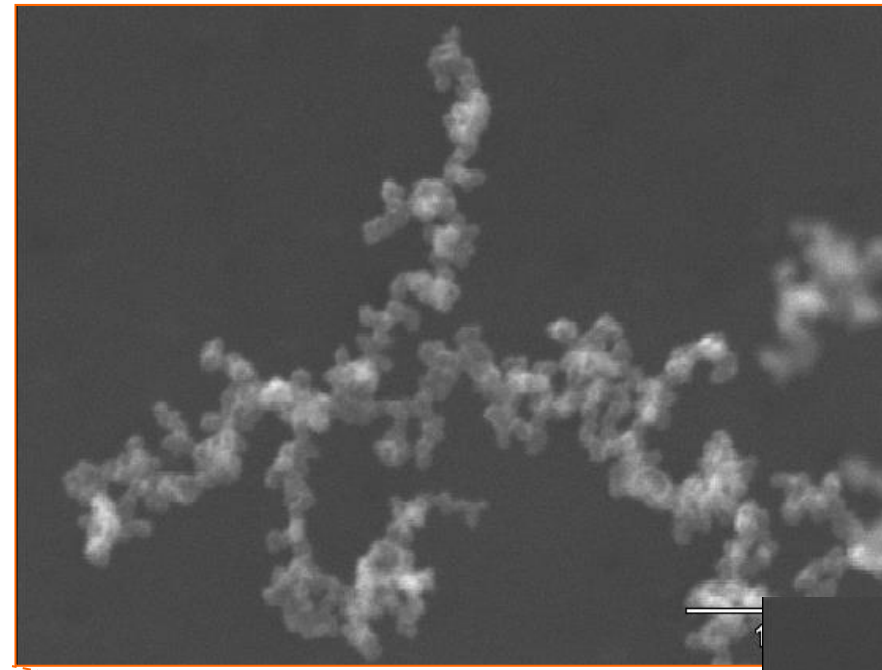
2018 SF Bay Area wildfire smoke

- Amorphous, **organic carbon** (OC) particles and spherical “tar balls”, 50-500 nm
(Adachi and Buseck 2011; Posfai et al., 2003; China et al 2013; Hand et al., 2005; Wagner et al, 2012)
 - Dominant in low temperature, smoldering biomass emissions (wildfires, cookstoves, crop burning)
 - Water soluble, enriched in potassium and sulfur
 - Hydrocarbons include ~5% **polycyclic aromatic hydrocarbons (PAH)** = known or probable carcinogens / toxics [e.g., Benzo [a] pyrene, Benzo (b + k) fluoranthene] (CARB, 2003; Robinson et al, 2011)
- Ultrafine OC PM from peat wildfires causes significantly decreased cardiac function (Kim et al 2014)

Wildfire particle type #2: Soot

- Health effects associated with soot particles, **above and beyond general PM**
 - Short term health effects stronger for diesel “black carbon” than general PM (Schwartz et al, 2005; Grahame, 2009)
 - Diesel soot toxicity theorized to be influenced by PAH coating (Steiner et al, 2016)
- **Short term soot exposure** (5 min – 24 hr) associated with increased heart rate variability (Adar et al, 2007)
- Relatively **minor** component of biomass fires (5-10%)
- Major component of burned diesel (S), unleaded and leaded gasoline (Pb and Br), and burning tires

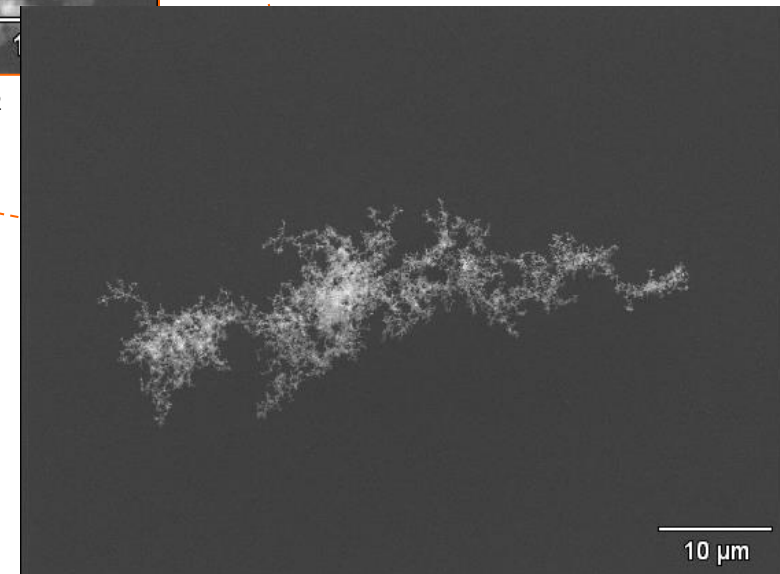
(Murr 2009; Clague et al.,1999; Li et al, 2004; Adachi and Buseck, 2008)



Wagner et al, 2012

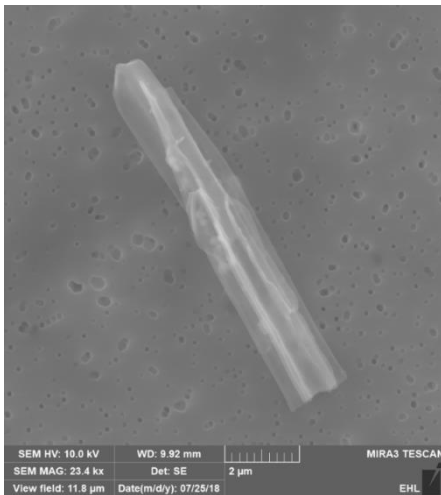
Chain agglomerates of 20-60 nm, graphitic, **elemental carbon** particles, with sorbed organic carbon and inorganics

(China et al, 2013; Adachi and Buseck, 2011)



Wildfire particle type #3: Ash

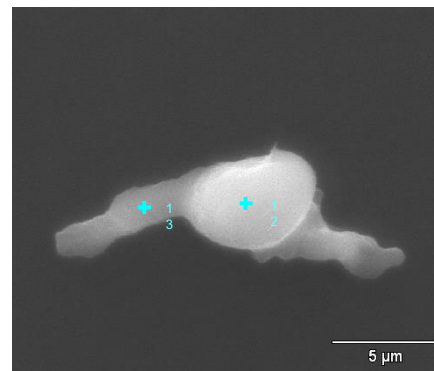
- Remnants of burned plants and building materials, mostly **> 2.5 μm** on a mass basis
 - Plant ash: C, K, Cl, Ca, Si, S, and Na (Kurkela et al, 1997; Li et al, 2004; Wagner et al 2012; Biolex, 2009; Pitman, 2006)
- Inhalation of $\text{PM}_{10-2.5}$ causes **inflammation**; can contain metals, especially if emitted from fires in urban areas (Adar et al, 2014)
- Metals in soil and ash from 2007-9 CA wildfires (Wolf et al, 2010)
 - elevated levels of **chromium(VI)** [toxic, carcinogenic], arsenic, lead, and antimony
 - highly caustic (pH = 10-12)
- Fly ash = spherical, inorganic PM from coal or high temperature biomass burning (Lind et al, 2000)



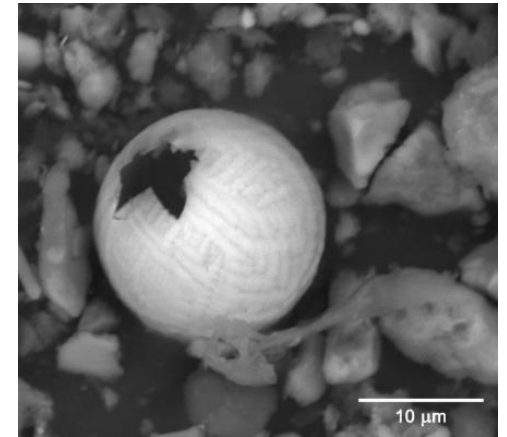
2017 SF Bay Area wildfire smoke



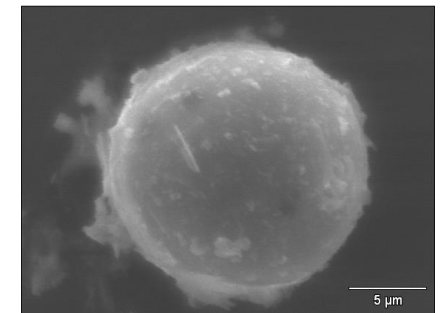
2017 SF Bay Area wildfire smoke



Wagner et al, 2012

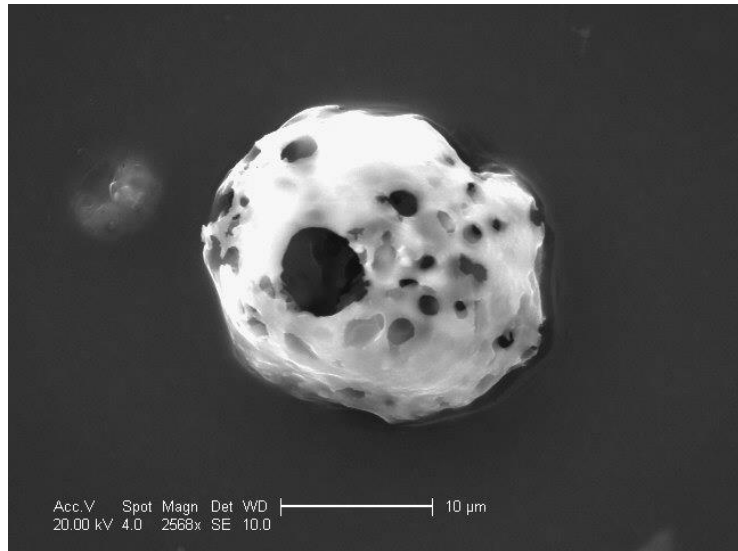
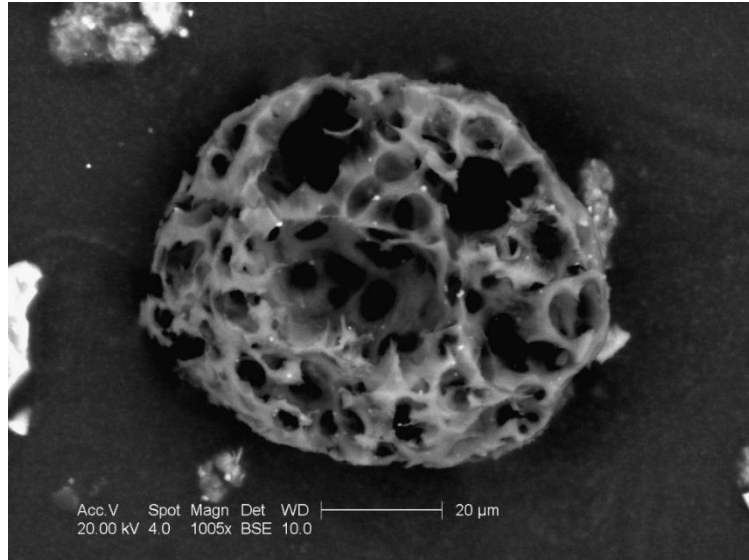


Wagner et al, 2003



Wagner, 2009

Other wildfire particle type: Petroleum and plastic emissions

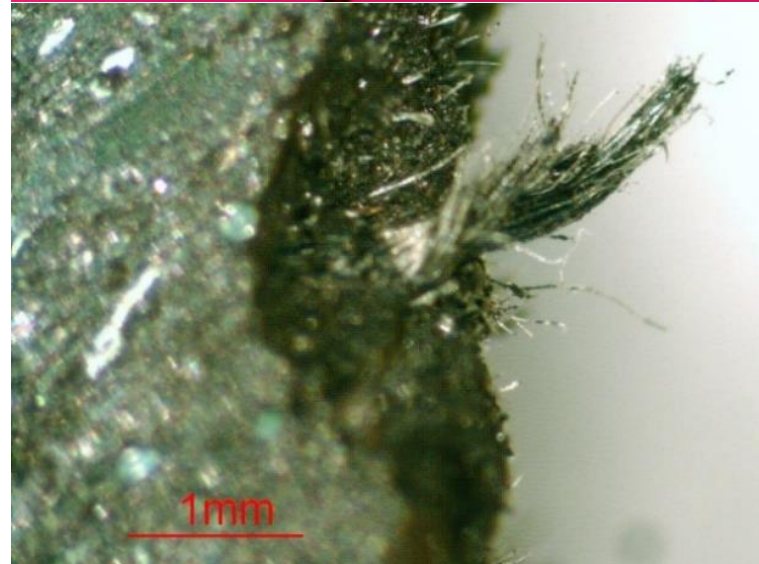
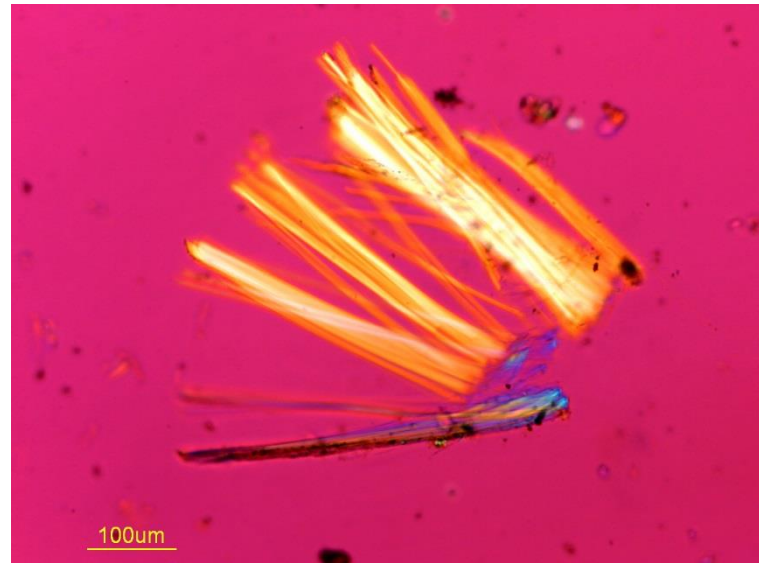


Wagner et al, 2003

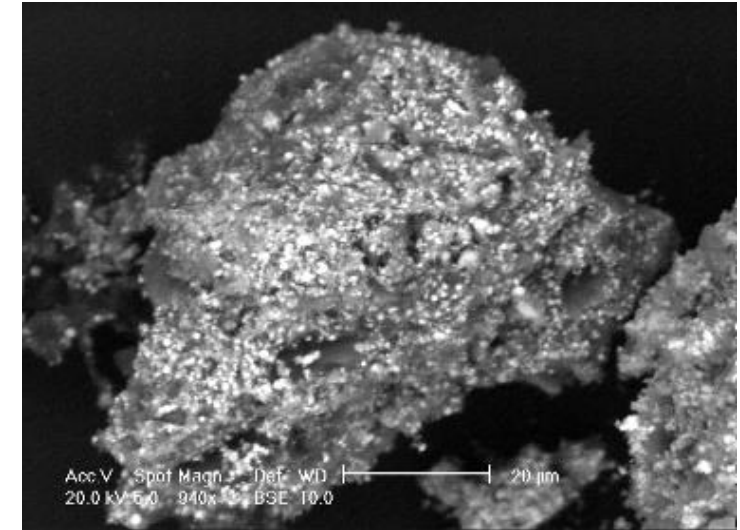
- Burning **oil**: $PM_{10-2.5}$ or larger OC (Miller and Linak, 1996; Huffman et al., 2000; Lighty et al., 2000; Marrone et al 1983; Allouis et al 2003; Lippman et al, 2006)
 - Coke particles with **vanadium and nickel** (and Zn and Fe)
 - PM_{10} containing Ni (and possibly V) causes increased heart rate variability above that caused by normal PM_{10}
- Burning **synthetic materials** produced >10x more $PM_{2.5}$ than wood; mostly UFP <150 nm (Fabian et al, 2010)
 - **styrene** (e.g. disposable plastic glasses and dishes, insulation, appliances, electronics, toys, tires, vehicles)
 - **vinyl** polymers (e.g. PVC pipe, wiring, siding, resin chairs and tables)
 - **Arsenic** (sometimes >STEL), cobalt, chromium, lead, phosphorous, mercury, and **PAHs**.
 - Wood product PM increased with fraction of **adhesives**

Other wildfire particle type: Post-fire building material PM

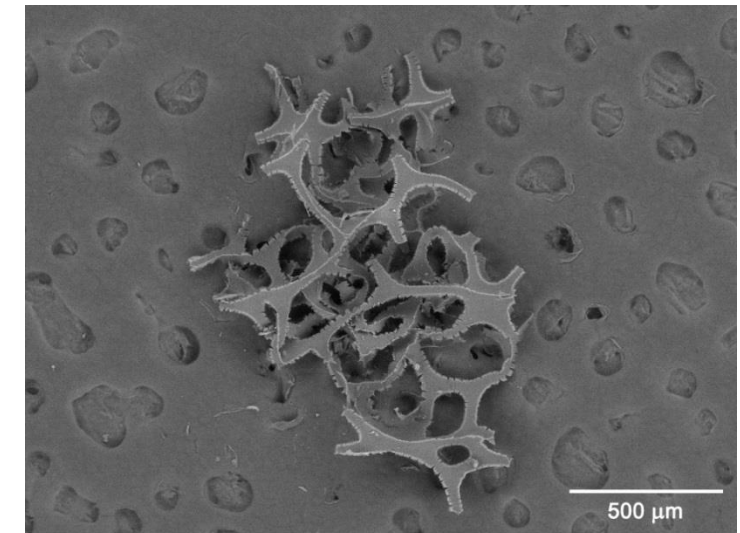
- Exposed building materials and friable dust are potential sources of carcinogens and toxics
 - Carcinogenic **asbestos**
 - Irritant **fiberglass** dust
 - Toxic **metals** (lead, chromium, arsenic, copper, mercury) from partially burned batteries, paint, electronics, solder, pipes, treated wood



Asbestos released by heat, formerly encapsulated in brakes (De Vita et al, 2012)



Crumbled paint with micrometer sized lead (bright spots) (Wall et al 2002)



Crumbled furniture foam with brominated flame retardant (Wagner et al 2013)

Effect of particle size on inhalability & transport

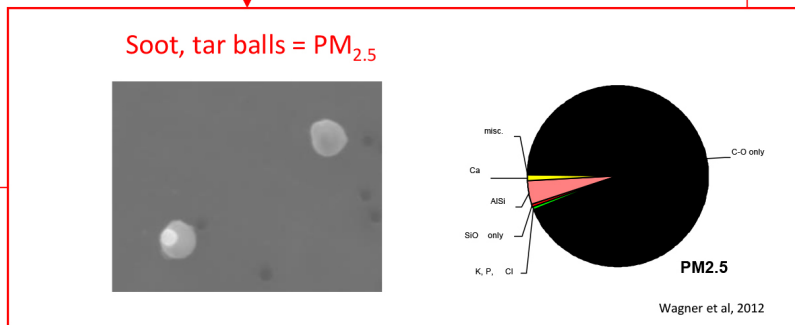
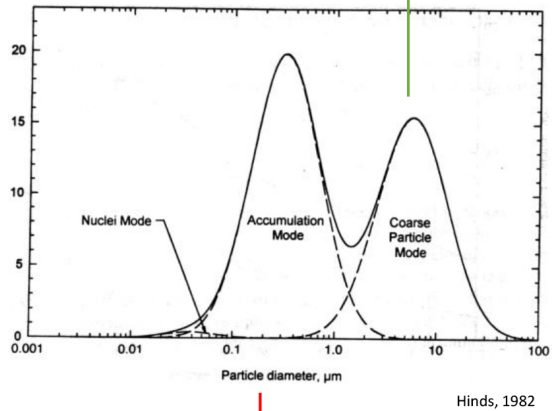
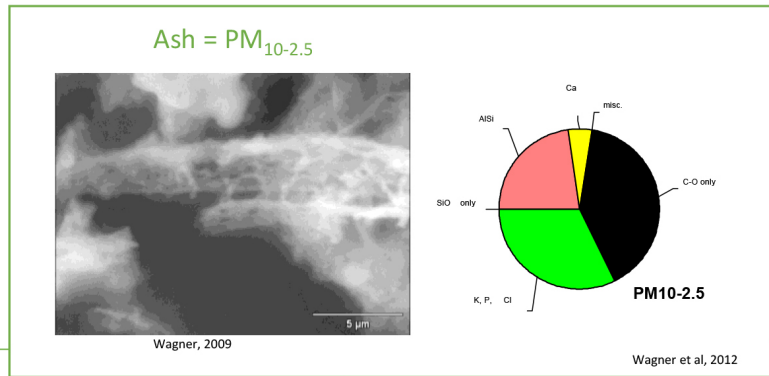


Harnly et al, 2012

In some cases, shifting meteorology can also force entire $PM_{2.5}$ plume to the ground and into breathing zone

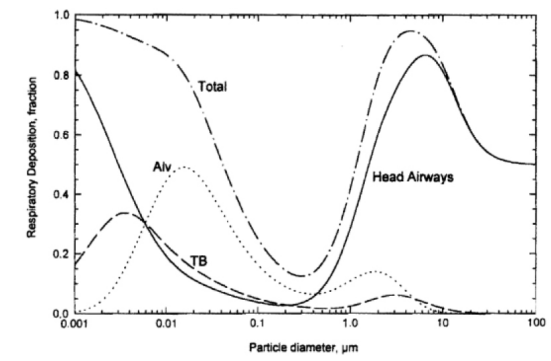
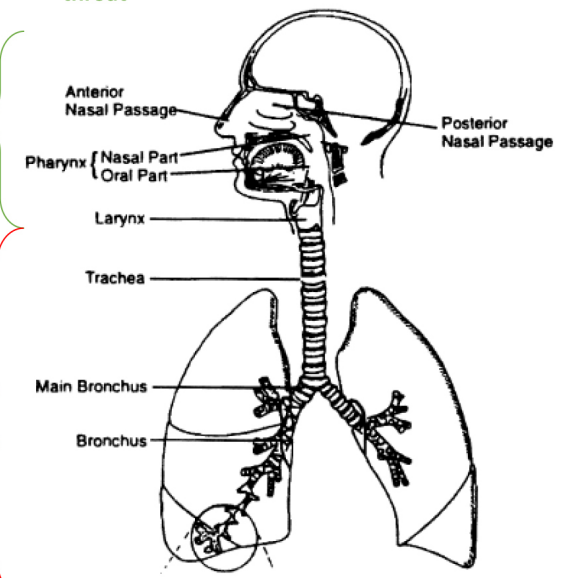
$PM_{2.5}$ plume more likely to stay aloft

Ash = $PM_{10-2.5}$ will settle to ground at faster rate



$PM_{2.5}$ more likely to deposit in lungs & trachea

$PM_{10-2.5}$ more likely to deposit in nose and throat



Hinds, 1982

Wildfire Gas Emissions

- Wildfire smoke gas hazard types, measured **close to fire** (adapted from Fabian et al, 2010)

Type of gas-phase hazard	Gas species
Asphyxiants	CO, CO ₂ , H ₂ S
Irritants and allergens	NH ₃ , HCl, NO _x , phenol, SO ₂ , isocyanates
Carcinogens	benzene, styrene, formaldehyde

- Gas chemical concern groups based on Hazard Ratios = EF / TLV (adapted from Austin, 2008):

Hazard ratio groups	Gas species
Group 1	CO, formaldehyde, acrolein, NO _x
Group 2 (One order of magnitude less)	benzene, CO ₂ , [PAH], NH ₃ , furfural
Group 3 (Two orders of magnitude less)	acetaldehyde, 1,3-butadiene, methane, methanol, styrene, acetonitrile, propionaldehyde, toluene, methyl bromide, methylethylketone, acetone, methyl chloride, xylenes, phenol, tetrahydrofuran, methyl iodide, mercury

- Hazardous gas emissions from associated burning products and building materials (Fabian et al, 2010)
 - Polystyrene plastics: benzene, phenols, and styrene
 - Vinyl compounds: acid gases (HCl and HCN) and benzene
 - Wood products: formaldehyde, formic acid, HCN, and phenols
 - Roofing materials: SO₂ and H₂S.

Wildfire PM and Gas Measurement Options

Wildfire emissions measurement type	Measured quantity	Comments
<i>Samplers (need to take back to lab to analyze)</i>		
Filters or impactors	PM _{2.5} , PM _{10-2.5} , PM ₁₀ (Gravimetric mass); PAHs	True mass; size fractions; PAHs by GC/MS
Electron microscopy / Impactors, thermophoretic samplers; passive samplers*	PM _{2.5} , PM _{10-2.5} , PM ₁₀ (Size, shape, chemistry)	Detailed particle ID; size distributions ; passive samplers are low cost, but need longer sampling times
Active or passive* sorbent tubes, badges, or gas canisters	VOCs, NOx	GC/MS, HPLC
<i>Continuous monitors (best time resolution)</i>		
Laser photometers; low cost optical sensors*	PM _{2.5} , PM _{10-2.5} , PM ₁₀ (Light scattering)	Can be very sensitive to particle size and composition
Beta attenuation	PM _{2.5} (Beta radiation absorption)	Signal can be noisy at high time resolution
Aethalometers	BC or UVPM (Light absorption at specific wavelengths)	Correlation with specific pollutants not well known
Aerodynamic/electrodynamic/condensation counters	UFP (Single particle light scattering)	Size distributions possible in some models
Photo-ionization detectors	VOCs (total HCs)	Standard size lamp in multi-gas detectors ineffective
Long path UV spectrometers	VOCs, NOx	Interferences for toluene and styrene
Electrochemical/MOx sensors and colorimetric tubes	VOCs, CO, NOx	some interference from other compounds, qualitative
Portable GC-MS	VOCs	High detection limit
OP-FTIR	VOCs, NOx, CO	Difficult to implement successfully in the field
<i>Other</i>		
Satellite/remote sensing*	PM _{2.5} , PM _{10-2.5} , PM ₁₀ (Light scattering)	Does not require site visits; limited resolution

*Candidates for improved neighborhood and local measurements

Guidance on Indoor Air Cleaner/Filtration Systems

- Studies have shown that air cleaner/filtration operation in homes during wildfire periods help to reduce indoor concentration of PM2.5
(Barn et al. ,2008; Henderson et al.,2005; Fisk and Chan,2016)
- Both portable air cleaners and in-duct air filtration systems are available on market



(Chen et al., 2006)

Particles Removal		Gaseous Contaminants Removal		Ozone Emission	
Device Type	Applicable Standard	Device Type	Applicable Standard	Device Type	Applicable Standard
Portable air cleaner	ANSI/AHAM AC-1-2019	Portable air cleaner	None	Portable energy-using air cleaners ^a	ANSI/UL Standard 867 (Section 37)
In-duct filter	ANSI/ASHRAE Std. 52.2-2017	In-duct sorptive media gas-phase air-cleaning devices	ASHRAE Std.145.2-2016	In-duct electronic air cleaners ^b	CSA C22.2 no. 187-15, § 7.5 and 7.6

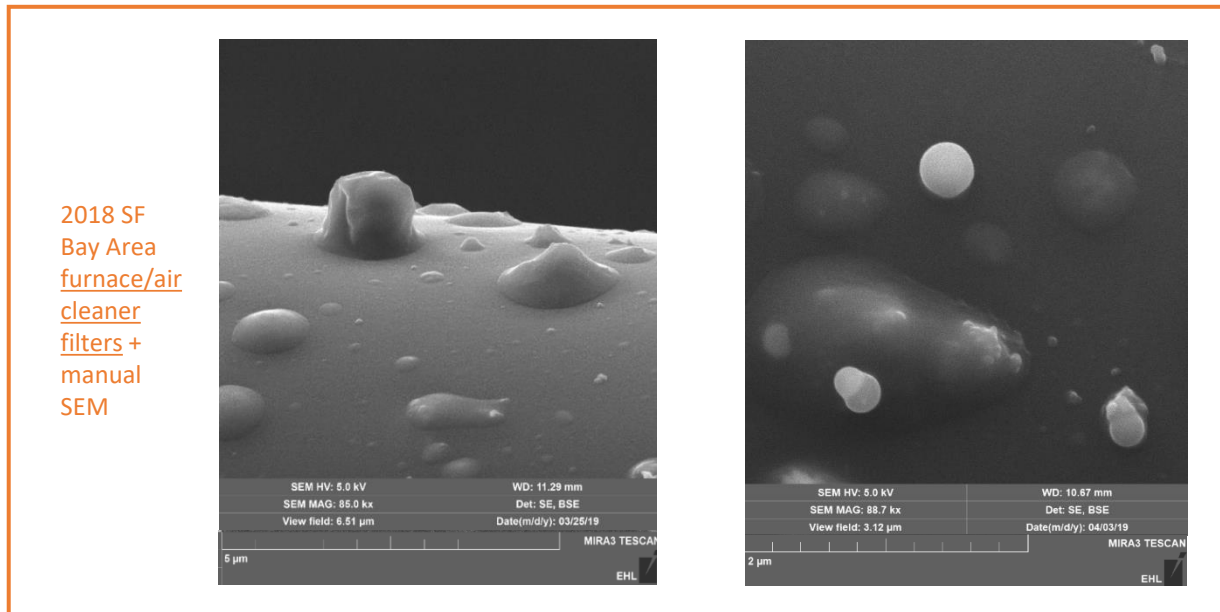
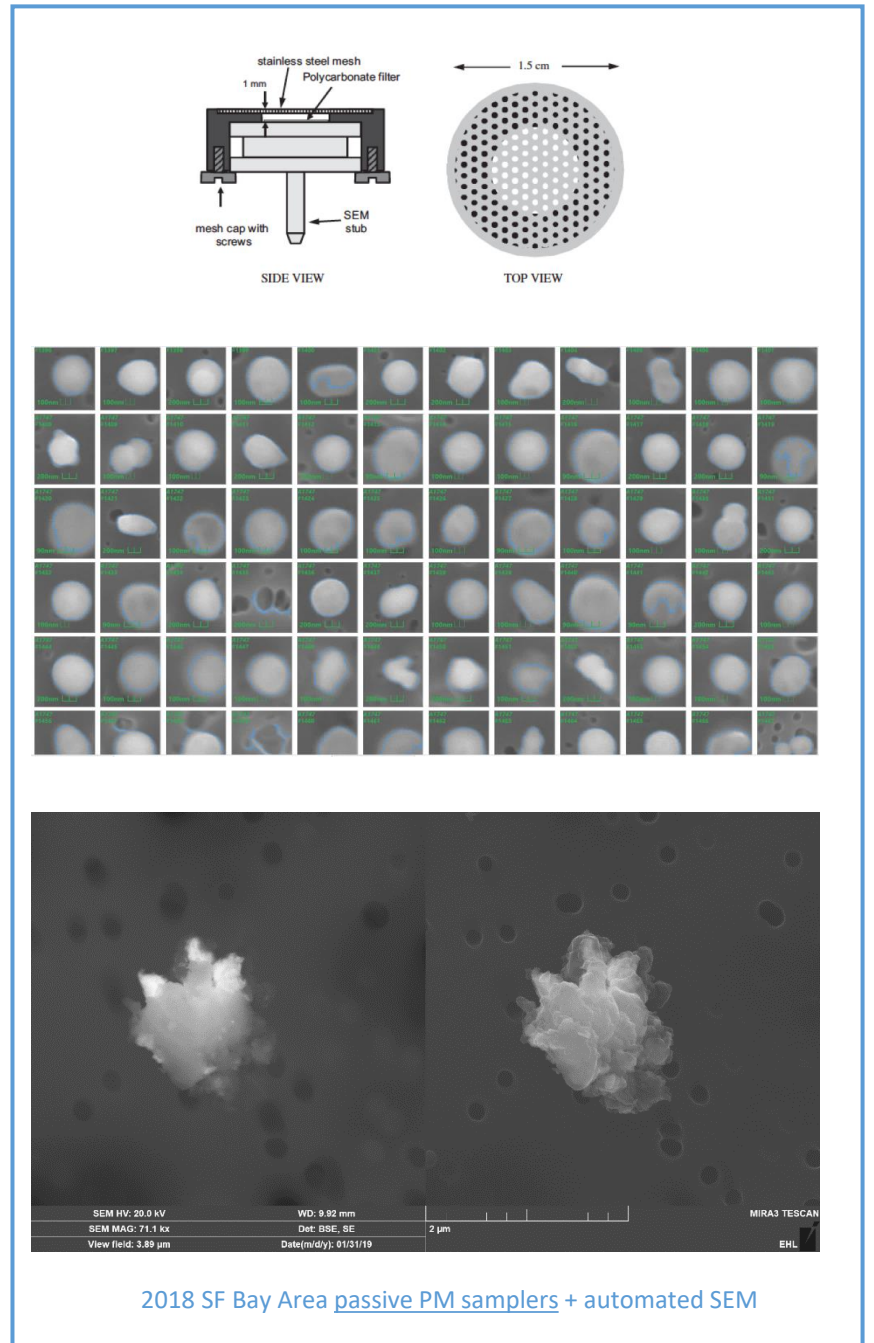
(a) Required by the current California's Regulation to Limit Ozone Emissions from Indoor Air Cleaning Devices (Nov. 2008)

(b) Required in [the proposed amendment to the current California's Regulation to Limit Ozone Emissions from Indoor Air Cleaning Devices.](#)

- Use portable air cleaner with sufficient Clean Air Delivery Rate (CADR) based on the room size.
- Use in-duct filter with sufficiently high Minimum Efficiency Reporting Value (MERV) under proper forced air system operation.
- May consider air cleaners that employ combined technologies to remove both volatile organic compounds (VOCs)/odors and particulates if volatile gaseous contaminants are also of concern.
- Avoid using ozone-generating air cleaners.

Current EHL wildfire emissions analyses

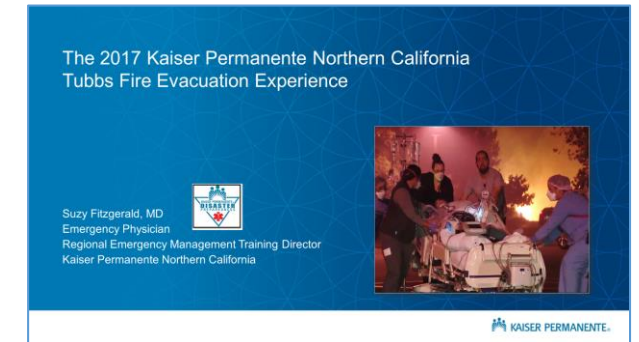
- 2017-2018 SF Bay Area air data and sample analyses
 - Public data: UV absorbing PM, black carbon, continuous/low cost sensor PM_{2.5}
 - New measurements: Electron microscopy and ICP-MS of ultrafine particles, coarse PM, ash, VOCs, and metals
 - Passive PM samplers and home furnace/air cleaner filters
 - “Tar ball” particles with trace copper, zinc, and lead



2018 SF Bay Area passive PM samplers + automated SEM

EHL Consultations & Trainings

- **Chemical release/wildfire trainings** on technical issues for health care coalitions (HCC), wildfire professionals, and other agencies
 - HCC chemical preparedness meetings & distance learning
 - Vulnerable CA hospitals - chemical release training
- **Webinar series on wildfire emissions for wildfire professionals** (Fall 2018)
 - Impacts on hospitals, cleanup/recovery, first responders, worker health
 - Presenters from CDPH, Kaiser Healthcare, UC Davis emergency medicine, US EPA R9 cleanup operations, Oakland Fire Dept



Fitzgerald (2018)

BENZENE

c1ccccc1

- Produced through incomplete combustion
 - 85% in urban areas from automobile exhaust
- Acute toxicity
 - Aplastic anemia with large exposures
- Chronic toxicity
 - Cancer risk
 - acute myelogenous leukemia
 - Likely other blood cancers (multiple myeloma, CLL, Lymphoma)

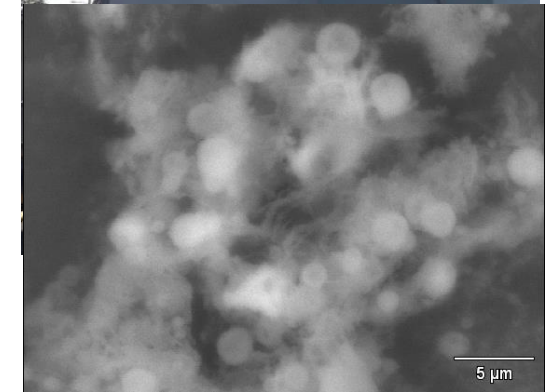
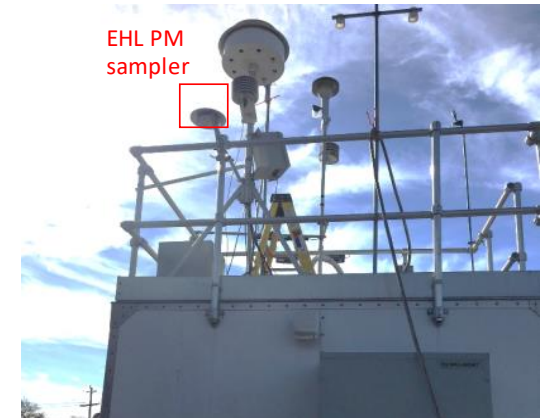
CHENOWETH

This slide has a white background with a blue border. It features the word 'BENZENE' in bold, the chemical structure of benzene (a hexagon with a circle inside), and a bulleted list of facts about its production and toxicity. A small red circle is in the bottom right corner.

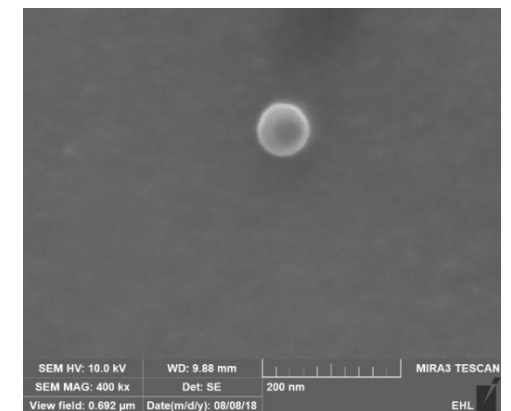
Chenoweth (2018)

Conclusions

- **Unique chemical components** of wildfire smoke
 - may impact human health differently than non-wildfire PM
 - may require improved measurements
- AQI based on PM_{2.5}, low cost sensors, or conventional monitoring methods
 - may not account for **metal-rich ash, ultrafine particles, or toxic gases** from wildfires
- CDPH EHL characterizing wildfire emissions
 - **Particle size effects** on inhalation, transport, and fate
 - Outdoor air samples, ash, indoor air and furnace filters, and building materials analysis with **microscopy, micro-spectroscopy, and ICP-MS**.
 - Publicly available air data -> components **specific to wildfire exposures**
 - **Technical assistance** to other agencies
- Goals: **reduce exposure misclassification** and **improve public health protection**



Burned biomass ash



2018 SF Bay Area wildfire smoke

References

1. Adachi K and Buseck P (2008) Internally mixed soot, sulfates, and organic matter in aerosol particles from Mexico City. *Atmos Chem Phys* 8:6469-6481.
2. Adar S, Gold D, Coull B, Schwartz J, Stone P, and Helen Suh*, Focused Exposures to Airborne Traffic Particles and Heart Rate Variability in the Elderly, *Epidemiology* • Volume 18, 2007.
3. Adar S, P Filigrana, N Clements, J Peel, Ambient Coarse Particulate Matter and Human Health: A Systematic Review and Meta-Analysis. *Curr Envir Health Rpt* (2014) 1:258–274
4. Austin C, Wildland firefighter health risks and respiratory protection, 2008, Report number: R-572, IRSST - Institut de recherche en santé & sécurité du travail.
5. Barn, P., et al., Infiltration of forest fire and residential wood smoke: an evaluation of air cleaner effectiveness. *Journal of Exposure Science and Environmental Epidemiology*, 2008. 18(5): p. 503-511.
6. California Air Resources Board, Air Quality and the Wildland Fires of Southern California, October, 2003, Emergency Response Team, 2003.
7. Chen W., Zhang J.S., Gao Z., and Kosar D. 2006. "Laboratory Testing of Air Cleaners for Removing Indoor Contaminants". International Specialty Conference: Indoor Environmental Quality - Problems, Research and Solutions - July 17-19, 2006 - Durham, NC.
8. Chenoweth J (2018) Health risks of wildland fire smoke, in CDPH OAQ / Regional Health Resilience Webinar Series on wildfire emissions, Richmond.
9. Clague A, Donnet J, Wang T, Peng J (1999) A comparison of diesel engine soot with carbon black. *Carbon* 37: 1553-1565.
10. De Vita J, Wall S, Wagner J, Wang Z, and Rao L (2012) Determining the Frequency of Asbestos Use in Automotive Brakes from a Fleet of On-Road California Vehicles. *Environmental Science & Technology* 46 :1344-51.
11. Domitrovich, J; Broyles, G; Ottmar, R; Reinhardt, T; Naeher, L; Kleinman, M; Navarro, K; Mackay, C; Adetona, O. 2017. Wildland Fire Smoke Health Effects on Wildland Firefighters and the Public - Final Report to the Joint Fire Science Program. JFSP Project No. 13-1-02-14. Missoula, MT: US Forest Service.
12. Fabian T, J Borgerson, S Kerber, P Gandhi, C Baxter, C Ross., JLockey , J Dalton, FIREFIGHTER EXPOSURE TO SMOKE PARTICULATES, Final Report, 2010, Underwriters Laboratories Project Number: 08CA31673.
13. Fent K, Alexander B, Roberts J, Robertson S, Toennis C, Sammons D, Bertke S, Kerber S, Smith D, Horn G (2017) Contamination of firefighter personal protective equipment and skin and the effectiveness of decontamination procedures, *Journal of Occupational and Environmental Hygiene*, 14:10, 801-814
14. Fisk, W.J. and W.R. Chan, Health benefits and costs of filtration interventions that reduce indoor exposure to PM2.5 during wildfires. *Indoor Air* 27, no. 1 (2017): 191-204.
15. Fitzgerald S (2018) The 2017 Kaiser Permanente Northern California Tubbs Fire evacuation experience, in CDPH OAQ / Regional Health Resilience Webinar Series on wildfire emissions, Richmond.
16. Grahame T, Does improved exposure information for PM2.5 constituents explain differing results among epidemiological studies? *Inhalation Toxicology*, April 2009; 21(5): 381–393
17. Henderson, D.E., J.B. Milford, and S.L. Miller, Prescribed burns and wildfires in Colorado: impacts of mitigation measures on indoor air particulate matter. *Journal of the Air & Waste Management Association*, 2005. 55(10): p. 1516-1526.
18. Huffman GP, Huggins FE, Shah N, Huggins R, Linak WP, Miller CA, Pugmire RJ, Meuzelaar HLC, Seehra MS, and Manivannan A (2000) Characterization of fine particulate matter produced by combustion of residual fuel oil. *J. Air & Waste Manage. Assoc.* 50:1106-1114.
19. He F, Shaffer M, Rodriguez-Colon S, Yanosky J, Bixler E, Cascio W, and Liao D, Acute Effects of Fine Particulate Air Pollution on Cardiac Arrhythmia: The APACR Study , *Environ Health Perspect* 119:927–932 (2011).
20. Hand, J. L., et al. (2005), Optical, physical, and chemical properties of tar balls observed during the Yosemite Aerosol Characterization Study, *J. Geophys. Res.*, 110.
21. Harnly M, Naik-Patel K, Wall S, Quintana P, Pon D, and Wagner J (2012) Agricultural burning: air monitoring and exposure reduction in Imperial County. *California Agriculture*, 66:85-90.
22. Hinds W, "Aerosol Technology-properties, behavior, and measurement of airborne particles", John Wiley & Sons, 1982
23. Horn G, Kerber, K Fent, B Fernhall, D Smith, Cardiovascular & Chemical Exposure Risks in Modern Firefighting, Interim Report, IFSI; UL FSRI; NIOSH; UIC; EMW-2013-FP-00766, 2013.
24. Kim et al., Cardiopulmonary toxicity of peat wildfire particulate matter and the predictive utility of precision cut lung slices, *Particle and Fibre Toxicology* 2014, 11:29
25. Kurkela J, Latva-Somppi J, Tapper U and E Kauppinen, Inorganic aerosol formation and deposition during fluidized bed combustion of biomasses and wood waste. *J. Aerosol Sci.* Vol. 28, Suppl. 1, pp. S415-S416, 1997.
26. Lee S, Wong H, and Lau Y, Association between air pollution and asthma admission among children in Hong Kong, *Clinical and Experimental Allergy*, 36, 1138–1146, 2006.
27. Li J, Posfai M, Hobbs P, and Buseck P (2004) Individual aerosol particles from biomass burning in southern Africa: 2. Compositions and aging of inorganic particles. *J Geophys Res* 108: 8484.
28. Lind T, Valmari T, Kauppinen E, Nilsson K, Sfiris G And W Maenhaut, Ash formation mechanisms during combustion of wood in circulating fluidized beds. *Proceedings of the Combustion Institute*, Volume 28, pp. 2287–2295, 2000.
29. Lighty JAS, Veranth JM, and Sarofim AF (2000) Combustion aerosols: factors governing their size and composition and implications to human health. *J. Air & Waste Manage. Assoc.* 50:1565-1618.
30. Lippmann M., K Ito, J Hwang, P Maciejczyk, and L Che, Cardiovascular Effects of Nickel in Ambient Air, *Environmental Health Perspectives*, 114:1662-1669, 2006.
31. Miller CA and Linak WP (1996) "Primary Particles Generated by the Combustion of Heavy Fuel Oil and Coal," EPA-600/R-02-093, Research Triangle Park, NC.
32. Nussbaumer T, Czasch C, Klippel N, Johansson L, Tullin C (2008) Particulate Emissions from Biomass Combustion in IEA Countries - Survey on Measurements and Emission Factors. *International Energy Agency (IEA) Bioenergy Task 32 Report*, Zurich.
33. Peters, A., M. Frohlich, A. D'oring, et al.: Particulate air pollution is associated with an acute phase response in men: Results from the MONICA-Augsburg Study. *Eur. Heart J.* 22:1198–1204 (2001).
34. Pitman, R. (2006) Wood ash use in forestry – a review of the environmental impacts. *Forestry*, 79:563-588.
35. Pope, C.A., and D.W. Dockery: Health effects of fine particulate air pollution: Lines that connect. *J. Air Waste Manage. Assoc.* 56:709–742 (2006).
36. Posfai M, Gelencser A, Simonics R, Arato K, Li J, Hobbs P, Buseck P (2004) Atmospheric tar balls: Particles from biomass and biofuel burning. *J Geophys Res* 109: D06213.
37. Robinson M et al, Characterization of PM2.5 collected during broadcast and slashpile prescribed burns of predominately ponderosa pine forests in northern Arizona, *Atmos Environ.* 2011, 45(12): 2087–2094.
38. Schwartz J, A Litonjua, H Suh, M Verrier, A Zanobetti, M Syring, B Nearing, R Verrier, P Stone, G MacCallum, F E Speizer, D R Gold, Traffic related pollution and heart rate variability in a panel of elderly subjects, *Thorax* 2005;60:455–461.
39. Steiner S, Bisig C, Petri-Fink A, Rothen-Rutishauser B, Diesel exhaust: current knowledge of adverse effects and underlying cellular mechanisms, *Arch Toxicol* (2016) 90:1541–1553
40. Tualatin Valley Fire and Rescue, Office of State Fire Marshall, "A Study on Chemicals found in the Overhaul Phase of Structure Fires using Advanced Portable Air Monitoring available for Chemical Speciation", Regional Hazardous Materials Team HM09, 2011.
41. Urbanski S, Hao W, Baker S (2009) Chemical Composition of Wildland Fire Emissions, in *Developments in Environmental Science*, Volume 8, A. Bytnerowicz et al (Editors), Elsevier.
42. Wall S, Wagner J, Tsai F, Flessel P, Lance L, and Garellick J (2002) Evaluation of Household Vacuum Cleaners in the Removal of Settled Lead Dust from Hard Surface Floors. Final Report, U.S. Dept of HUD #CALHR0028-97, Environmental Health Laboratory, California Department of Health Services, Berkeley, CA.
43. Wagner J, Wood N, and Wall S (2003) Automated elemental size distribution analyses and characterization of passive aerosol samples from New York City. Presented at annual meeting of the American Association for Aerosol Research, Anaheim, CA.
44. Wagner (2009) Analyses of Particulate Matter collected in Loyalton, California, March-April 2009. EHLB Report #E0902002, California Department of Public Health.
45. Wagner J, Naik-Patel K, Wall S, and Harnly M (2012) Measurement of ambient particulate matter concentrations and particle types near agricultural burns using electron microscopy and passive samplers. *Atmospheric Environment* 54:260-271
46. Wagner J, Ghosal S, Whitehead T, and Metayer C (2013) Morphology, spatial distribution, and concentration of flame retardants in consumer products and environmental dusts using scanning electron microscopy and Raman micro-spectroscopy. *Environment International* 59:16–26.
47. Wettstein, Z; Hoshiko, S; Fahimi, J; Harrison, R; Cascio, W; Rappold, A, Cardiovascular and Cerebrovascular Emergency Department Visits Associated With Wildfire Smoke Exposure in California in 2015, *J Am Heart Assoc.* 2018.
48. Wolf R, Hoefen T, Hageman P, Morman S, and Plumlee G, Speciation of Arsenic, Selenium, and Chromium in Wildfire Impacted Soils and Ashes, USGS Open-File Report 2010–1242, 2010.