

INTELLIGENT COMMODITIES™

XCHG

XPANSIV | CBL HOLDING GROUP

XCHG: Transforming Markets at Source



XCHG Provides a global marketplace for commodity buyers and sellers to transact an infinite array of data-driven commodity products in an intuitive, user-friendly environment.

TARGET MARKETS

Energy, Agriculture, Materials, Water

INVESTORS



S&P Global



Energy
Innovation
Capital



AVISTA
Corp.

COMPANY FACTS

- Formed in 2019 through the merger of CBL Markets, founded in 2009 and Xpansiv, founded in 2016
- 60+ Employees
- Offices Locations: Sydney, NYC, SFO, Seattle, Houston, Albuquerque, Vancouver, Berlin

KEY DIFFERENTIATORS

- Proprietary, immutable data format extensible to all data types
- Leading spot commodities exchange that combines proprietary matching and settlement technology
- 300+ unique products listed on the exchange (RECs, to Water)
- 6000+ conventional natural gas wells on-boarded on the platform
- 50+ landfill RNG projects onboarded on a proprietary RINS platform

Challenge

Consumers are increasingly demanding transparency about the nature of energy production to quantify environmental impacts and make informed decisions about energy procurement.

But markets can't efficiently trace and transact commodities based on their unique physical and qualitative attributes.

Analog market infrastructure and outdated products prevent markets from meeting today's demand for *more information*.



Solution

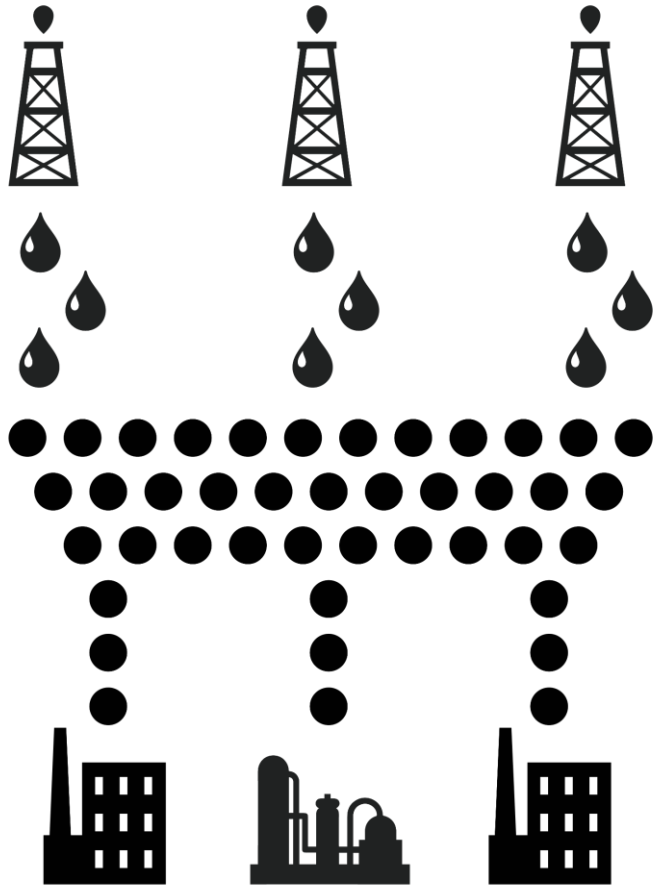
INTELLIGENT COMMODITIES™

Xpansiv transforms commodity data into digital assets in real time that are transparent and transactable. This enables consumers to make informed decisions based on energy production profiles through markets that value commodities based on their full physical and qualitative attributional profiles.



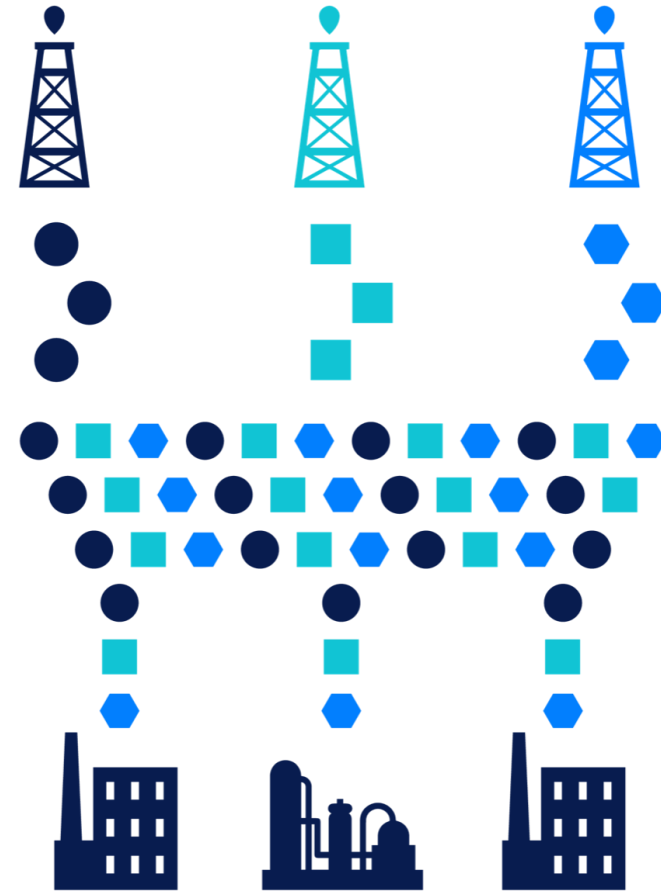
WHAT THE MARKET SEES

Undifferentiated commodities with no identifiable attributes

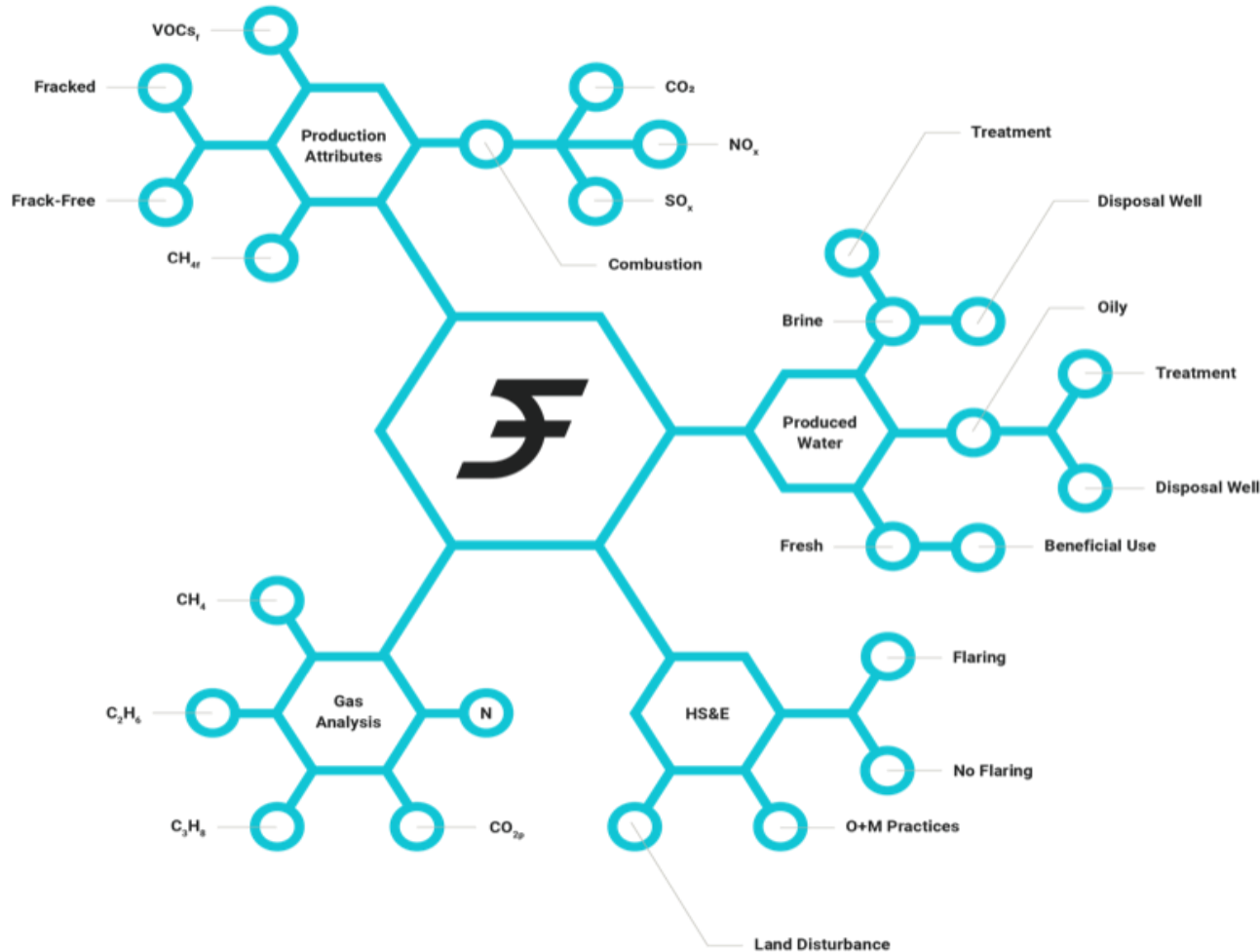


WHAT IS ACTUALLY HAPPENING

Unique systems produce commodities with unique attributes



Digital Feedstock: Commodity Asset + Metadata= Intelligent Commodities



Commodity
Producer
Basin
Production Type
Certification
Methane Intensity
Water Intensity
CO2 Content
Butane
Propane
etc.

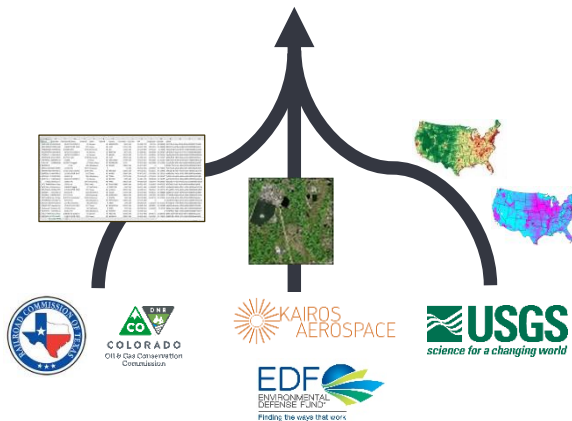


Contextualized Data: Independent Ratings and Certifications

VIEW FROM OUTSIDE

100% coverage of lower 48 Transmission System in dataset to define pathways.

Engineering
Facility age
Facility type
Volumes
Proximity to land, streams, populations, etc.
Elevation, flowpaths, etc.



Rapidly expanding data sources

&

VERIFY FROM INSIDE

600+ standards compiled, indexed, and mapped

:

Real Time Data Adjudication
SPCC plan
Emer. Resp. Plan
Surface equipment
Containment (prim. and sec.)
Morning reports
Site visit



CERTIFY and DIFFERENTIATE Market Drive's the Standard

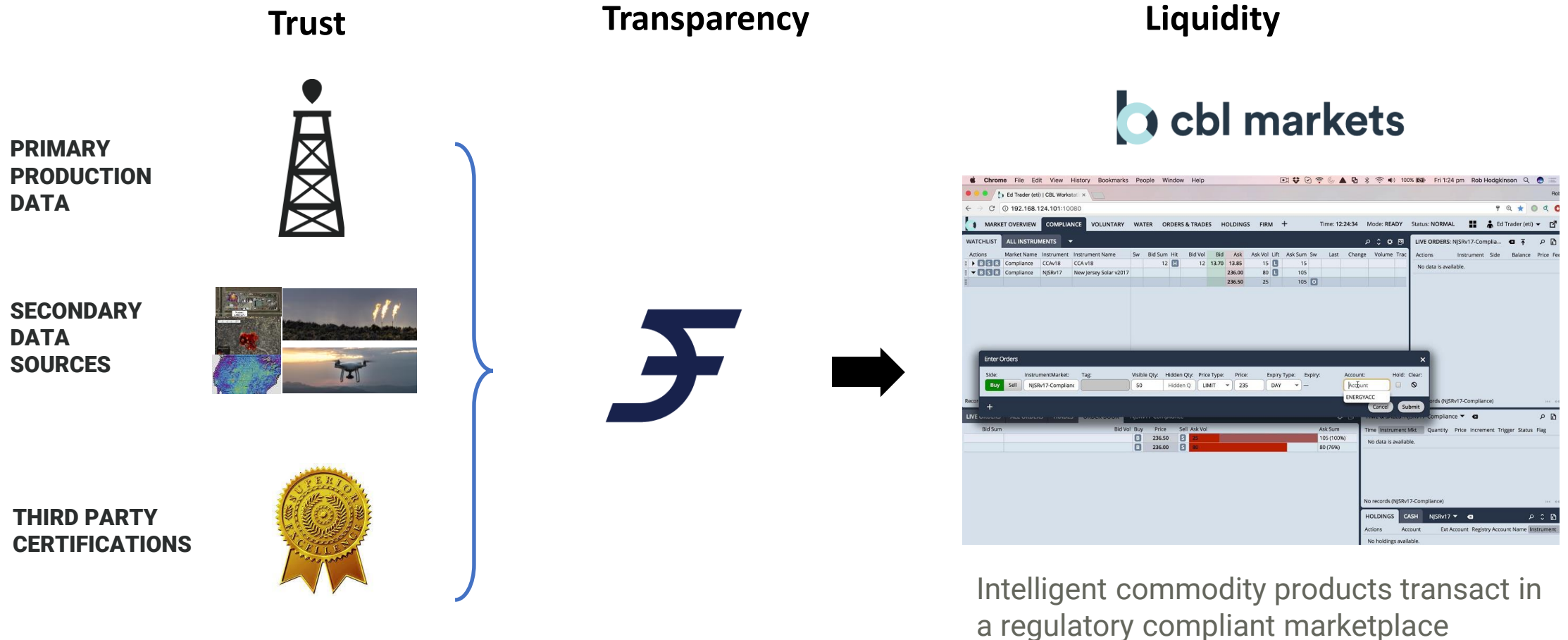
Individual third party Certifications

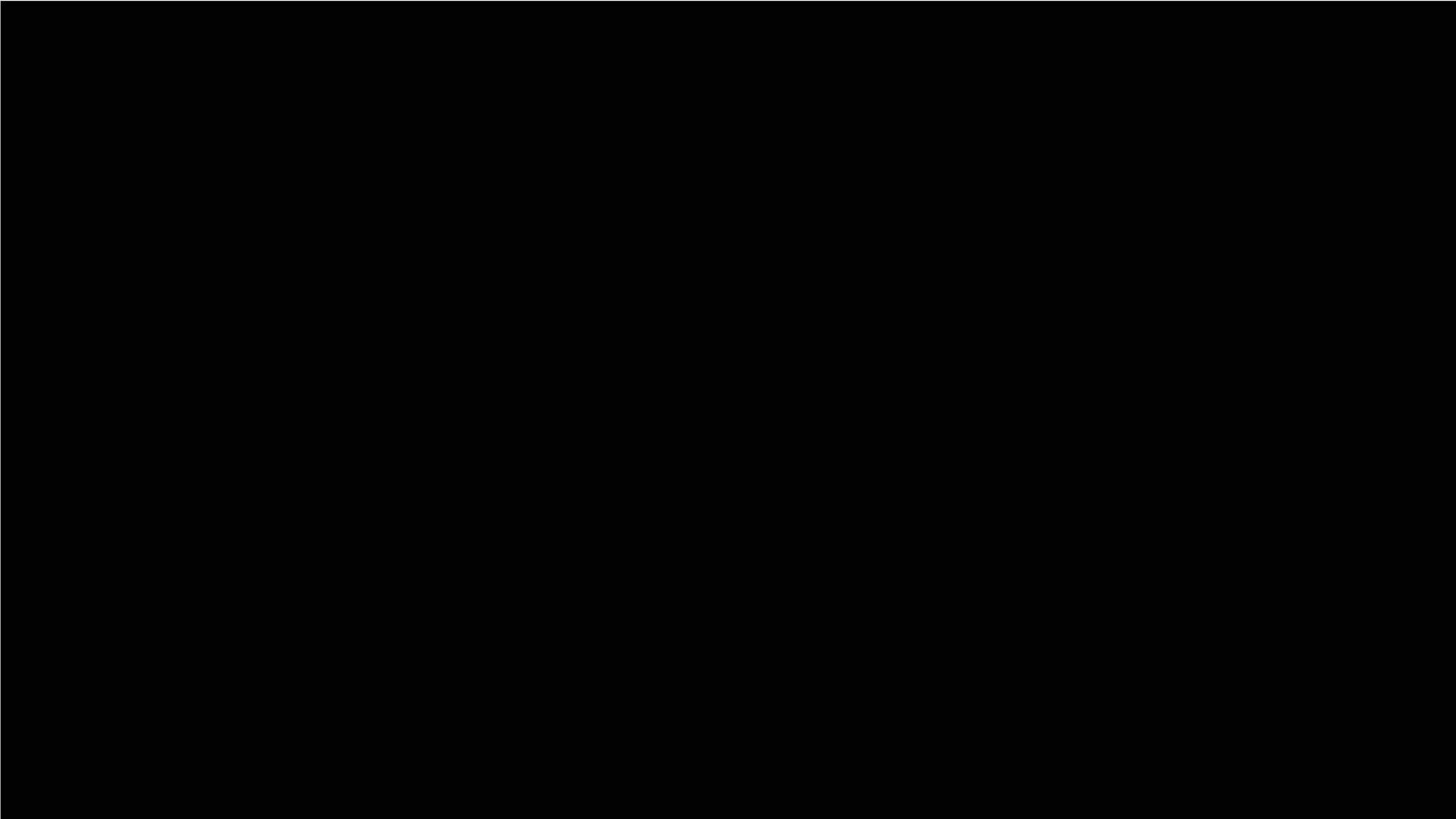
Enable Standards & Certifications



Digital Feedstock: Contextualized, Tradable Assets in a Proven Electronic Marketplace

XCHG delivers real time contextualized commodity information in a tradeable asset secure and verifiable from source to retirement.





THANK YOU.

