

Update | January 2020



## EnviroAtlas Update Bulletin

Keep up with the latest in EnviroAtlas news

### IN THIS UPDATE

- Get the scoop on new updates: [Register for our EPA Tools Webinar](#) on January 15th at 3pm
- New EnviroAtlas Communities | [Washington DC](#), [St. Louis MO](#), and [Los Angeles CA](#)

### EPA Tools Webinar: January 15th at 3pm



United States  
Environmental Protection  
Agency

EPA's Office of Research and Development  
invites you to a **free public webinar!**

## Tools and Resources Webinar EnviroAtlas Update

Wednesday, January 15, 2020, from 3:00 to 4:00 pm ET

Please register here:  
<https://epawebconferencing.acms.com/enviroatlasupdate2020/event/registration.html>



*See a demo of the latest EnviroAtlas updates and a sneak peek of new features.*

This webinar will give an overview of EnviroAtlas focusing on its recent updates and will include a short demo previewing what will be available soon. The webinar will also include examples of how EnviroAtlas has been used by communities to advance local initiatives.

Register for free here:

<https://epawebconferencing.acms.com/enviroatlasupdate2020/event/registration.html>

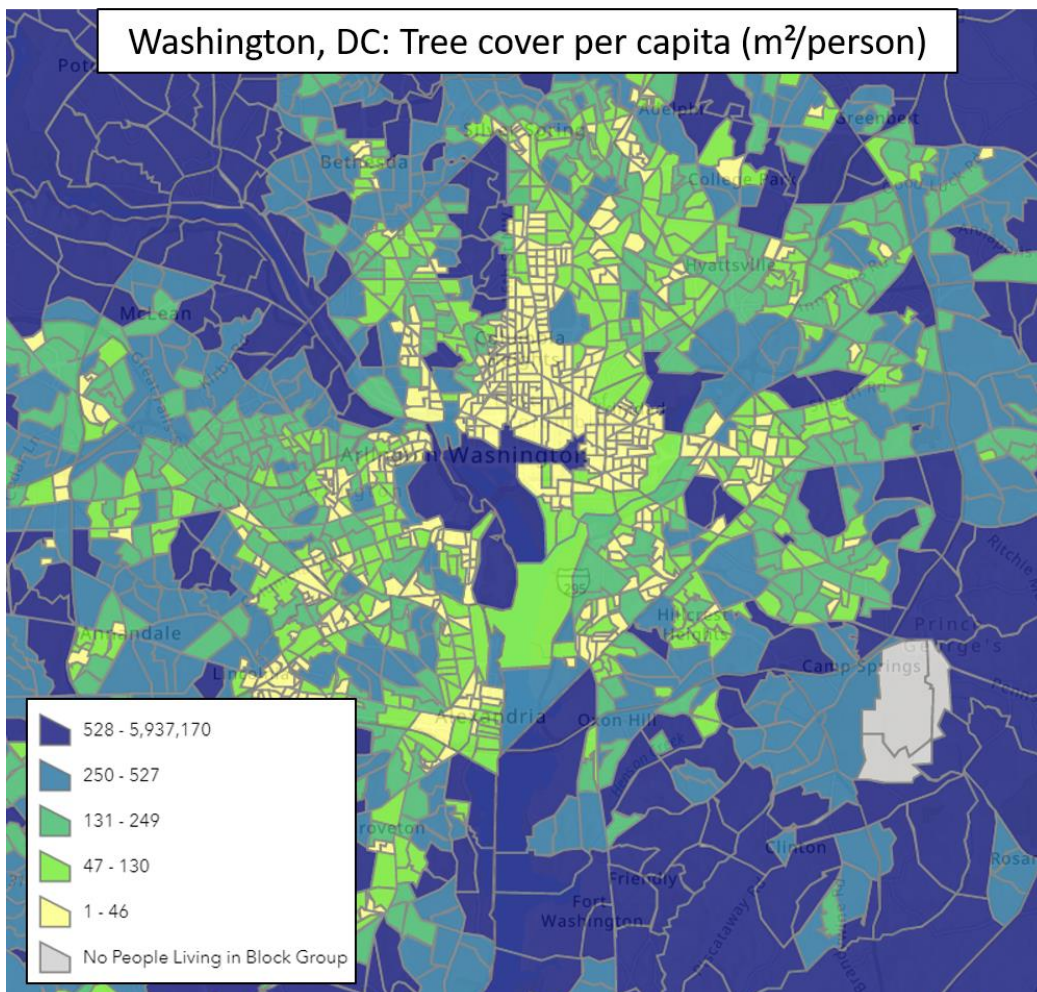
## New EnviroAtlas Communities

EnviroAtlas has 300+ national data layers that cover the contiguous US and an additional 100 community layers for 30 featured community areas. National data layers are frequently based on 30-meter resolution data, while [community scale data](#) are derived from 1-meter resolution land cover data for local planning and decision-making. Coverage for Alaska, Hawaii, Puerto Rico, and the US Virgin Islands is coming soon.

The latest community additions are Washington, DC; St. Louis, MO; and Los Angeles County, CA.

[Explore the data for EnviroAtlas Communities in the Interactive Map >>](#)

### Washington, DC

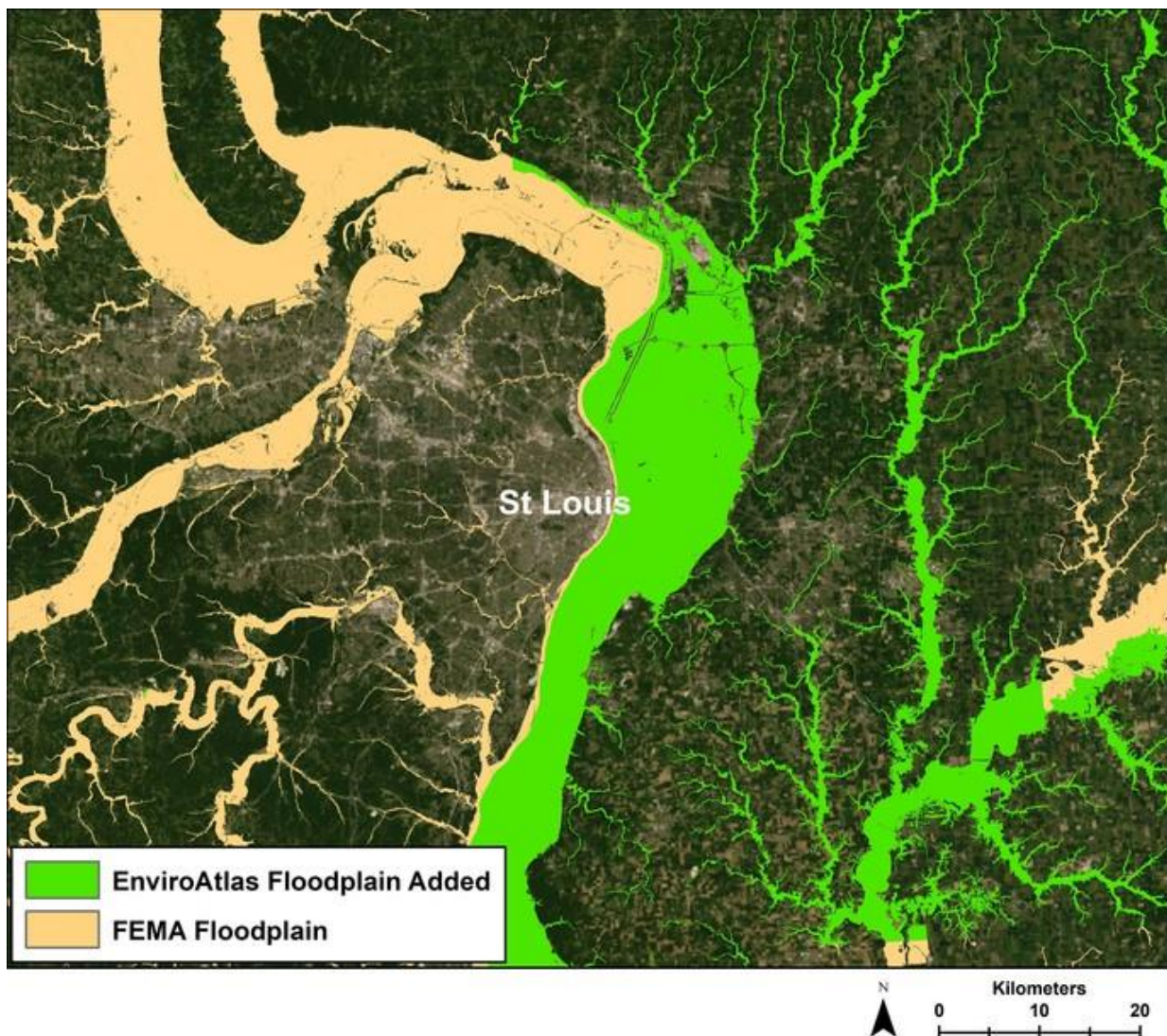


*Tree cover per capita ( $m^2$  per person) in Washington DC by census block group.*

- Washington DC encompasses nearly 3,000 census block groups.
- 22% of census block groups contain a large residential population within 300m of a busy roadway, with less than 25% of tree cover to buffer residents from road pollutants and noise.

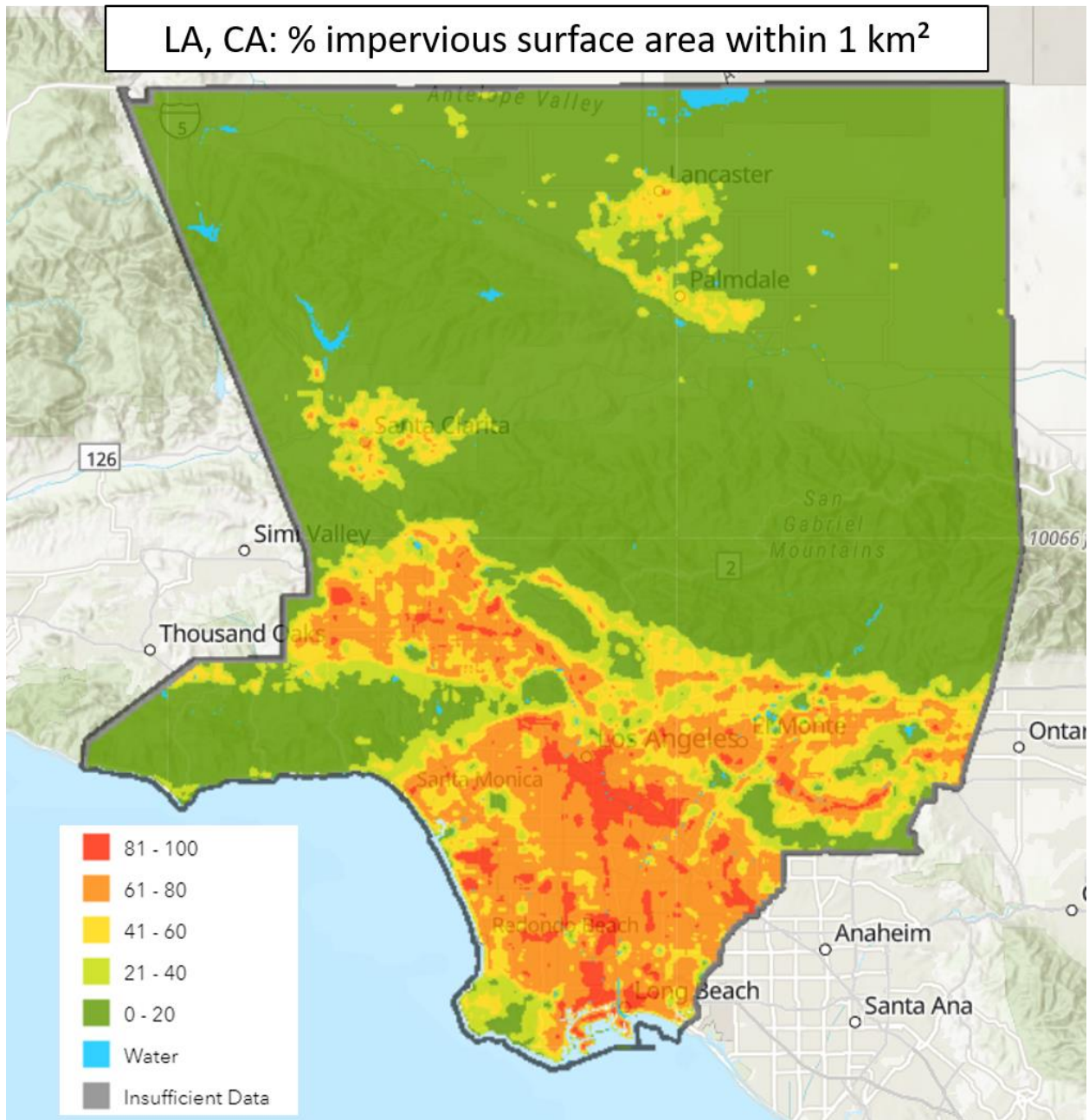
## St. Louis, MO

- St. Louis is situated on the Mississippi river at the border of Missouri and Illinois, in EPA Region 7.
- 9% of census block groups within the St. Louis boundary for EnviroAtlas contain 8% or more land area within the FEMA 100 year floodplain; meanwhile 17% of block groups lack FEMA floodplain data. However, many of these block groups are covered by the EnviroAtlas Estimated Floodplains map, which can help communities see areas that are likely to fall within a floodplain.



*Areas covered by the FEMA Digital Flood Insurance Rate maps highlighted in yellow, while areas of potential floodplain previously not covered by FEMA mapped by EnviroAtlas in green.*

## Los Angeles, CA



Percent impervious surface per square km in Los Angeles County, California.

- Los Angeles data includes community-scale data for all of LA county.
- 44% of census block groups in LA have 90% or more of LA residents living within 300m of a busy roadway e.g. at least 39.9% of LA residents live within 300m of a busy roadway, where exposure to vehicle pollutants is more likely.

[See what data we have available at both national and community extents in our Data Matrix >>](#)

---

## All EnviroAtlas Communities

Visit [our communities web page](#) to learn more about EnviroAtlas communities or click any of the cities below for a community-specific fact sheet.

- [Austin, TX](#)
- [Baltimore, MD](#)
- [Birmingham, AL](#)
- [Brownsville, TX](#)
- [Chicago, IL](#)
- [Cleveland, OH](#)
- [Des Moines, IA](#)
- [Durham, NC](#)
- [Fresno, CA](#)
- [Green Bay, WI](#)
- [Los Angeles, CA](#)
- [Memphis, TN](#)
- [Milwaukee, WI](#)
- [Minneapolis / St. Paul, MN](#)
- [New Bedford, MA](#)
- [New Haven, CT](#)
- [New York, NY](#)
- [Paterson, NJ](#)
- [Philadelphia, PA](#)
- [Phoenix, AZ](#)
- [Pittsburgh, PA](#)
- [Portland, ME](#)
- [Portland, OR](#)
- [Salt Lake City, UT](#)
- [Sonoma County, CA](#)
- [St. Louis, MO](#)
- [Tampa, FL](#)
- [Virginia Beach/Williamsburg, VA](#)
- [Washington, DC](#)
- [Woodbine, IA](#)

---

EnviroAtlas provides geospatial data, easy-to-use tools, and other resources related to ecosystem services, their stressors, and human health.

---

Have question or comments for the EnviroAtlas team? [Contact us!](#)