



Sustainable Management of Food

Lana C. Suarez

Associate Chief, Materials Management Branch

Office of Resource Conservation & Recovery

U.S. Environmental Protection Agency



Presentation Outline

- **U.S. Food Loss and Waste 2030 Goal**
- **Federal Interagency Efforts**
 - Winning on Reducing Food Waste Initiative
- **Partners**
- **Measurement**
 - What is food waste?
 - Why is food wasted?
 - Food Recovery Hierarchy
- **Tools and Resources**
 - Excess Food Opportunities Map
 - SMF Regional Contacts



By 2030:

Let's cut the amount of food we waste in half.



#NoWastedFood³



30-40% OF ALL AVAILABLE **FOOD** IN THE U.S. IS **WASTED**

Do your part. Join your federal partners
in reducing food waste.

#NoWastedFood





WINNING ON REDUCING FOOD WASTE

FY 2019-2020 FEDERAL INTERAGENCY STRATEGY

PRIORITY AREA 1: Enhance Interagency Coordination

PRIORITY AREA 2: Increase Consumer Education and Outreach Efforts

PRIORITY AREA 3: Improve Coordination and Guidance on Food Loss and Waste Measurement

PRIORITY AREA 4: Clarify and Communicate Information on Food Safety, Food Date Labels, and Food Donations

PRIORITY AREA 5: Collaborate with Private Industry to Reduce Food Loss and Waste Across the Supply Chain

PRIORITY AREA 6: Encourage Food Waste Reduction by Federal Agencies in their Respective Facilities

Partners

U.S. Food Loss and Waste 2030 Champions



Food
Recovery
Challenge

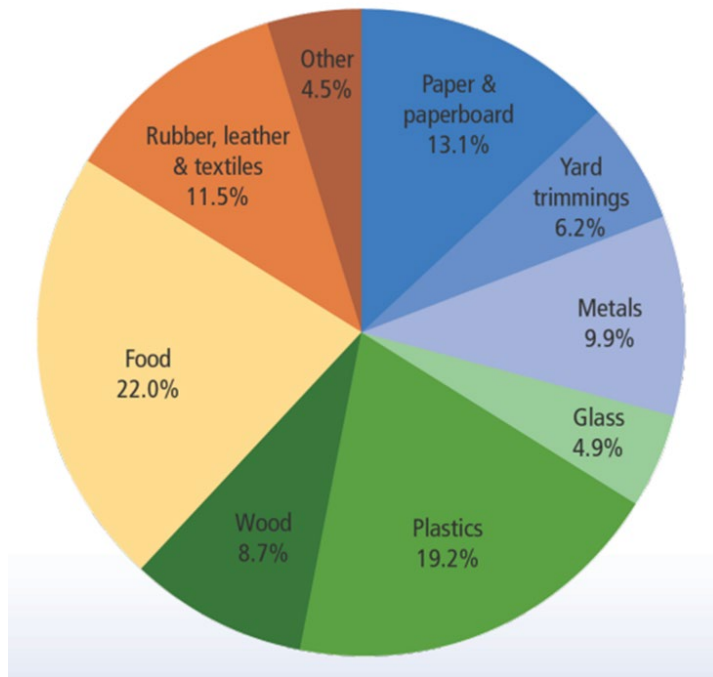


ReFED

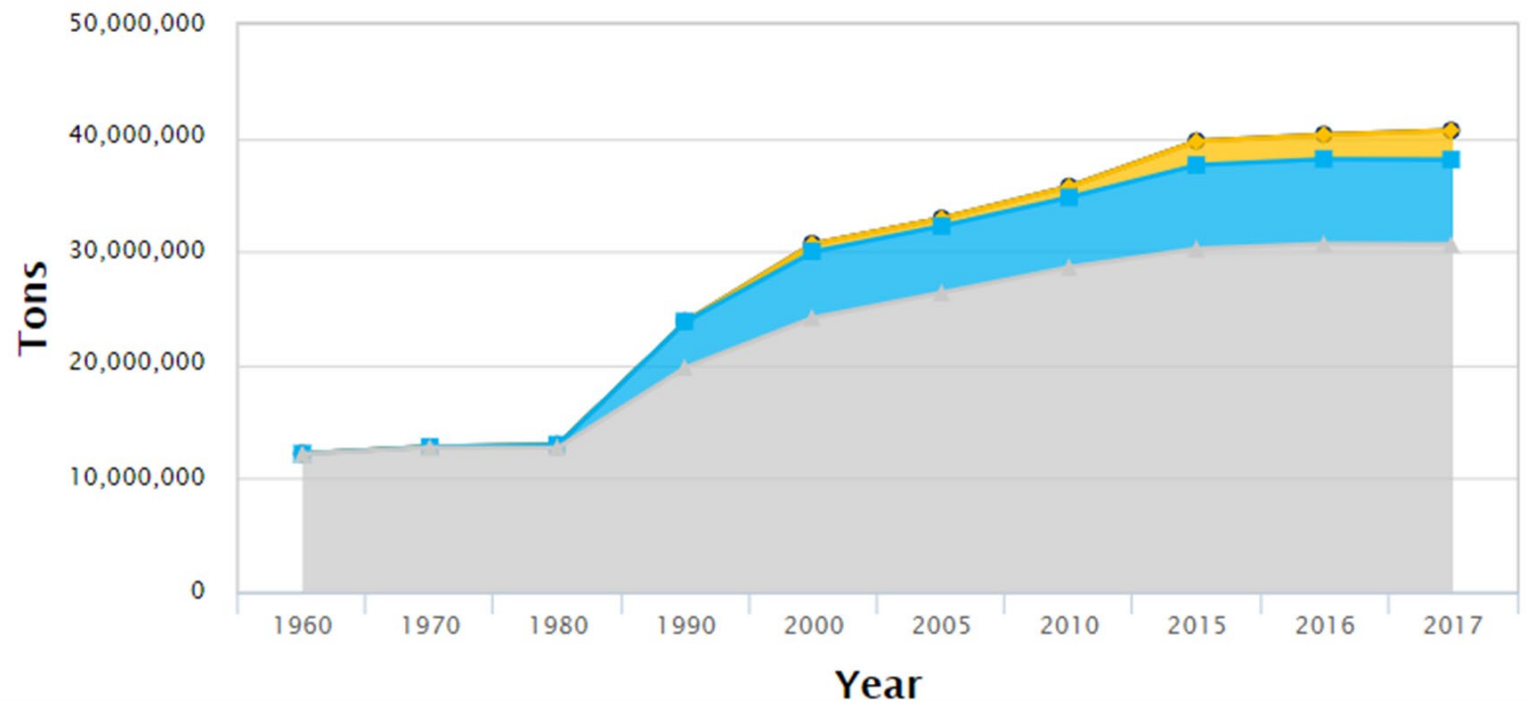
Rethink Food Waste
Through Economics and Data

Measurement

Figure 8. Total MSW Landfilled (by material), 2017
139.6 Million Tons

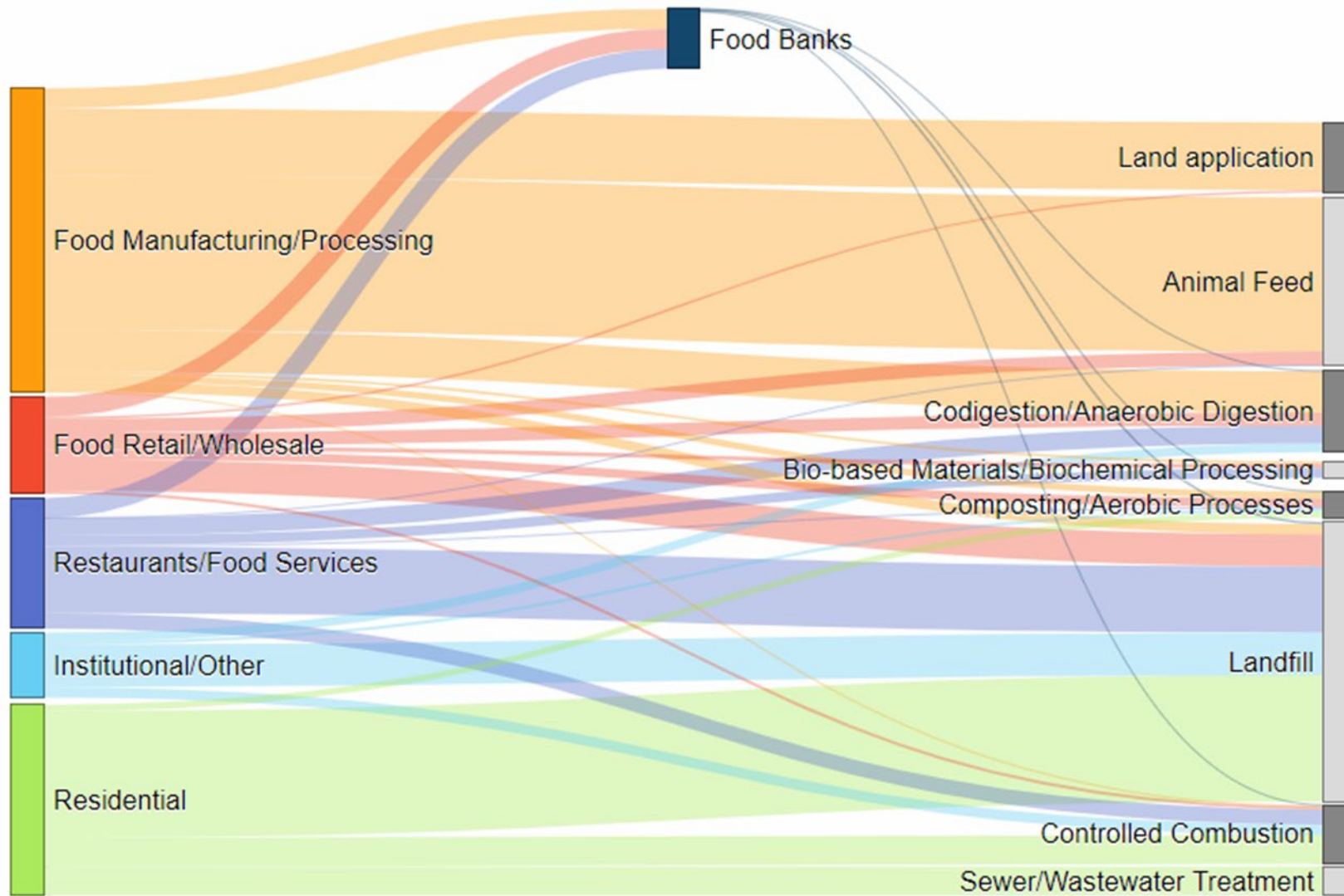


Food Waste Management: 1960–2017



<https://www.epa.gov/facts-and-figures-about-materials-waste-and-recycling/food-material-specific-data>

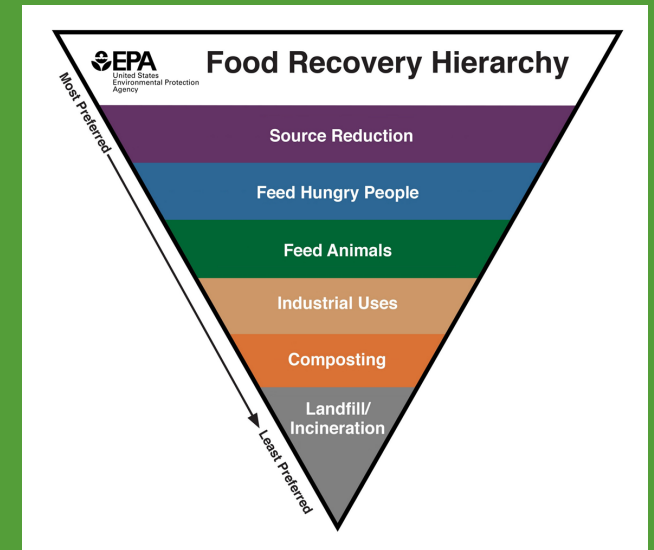
Wasted Food Management in the U.S.





WHY IS FOOD WASTED?

AND WHAT CAN WE DO
ABOUT IT?



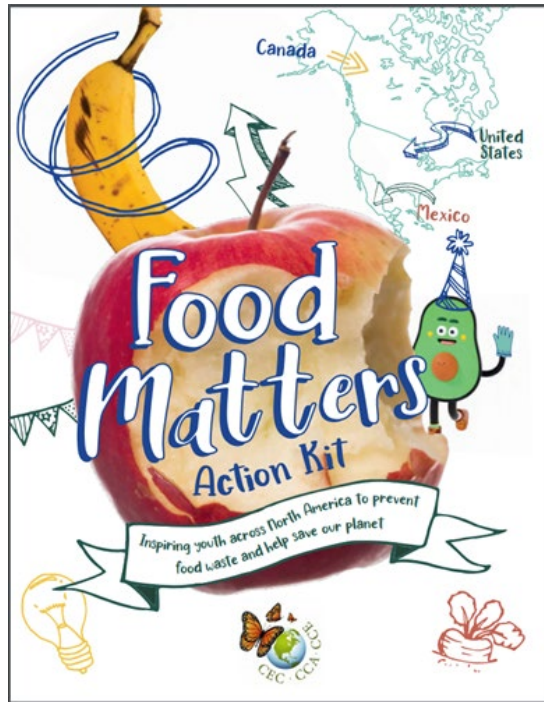
TOOLS AND RESOURCES

<https://www.epa.gov/sustainable-management-food>

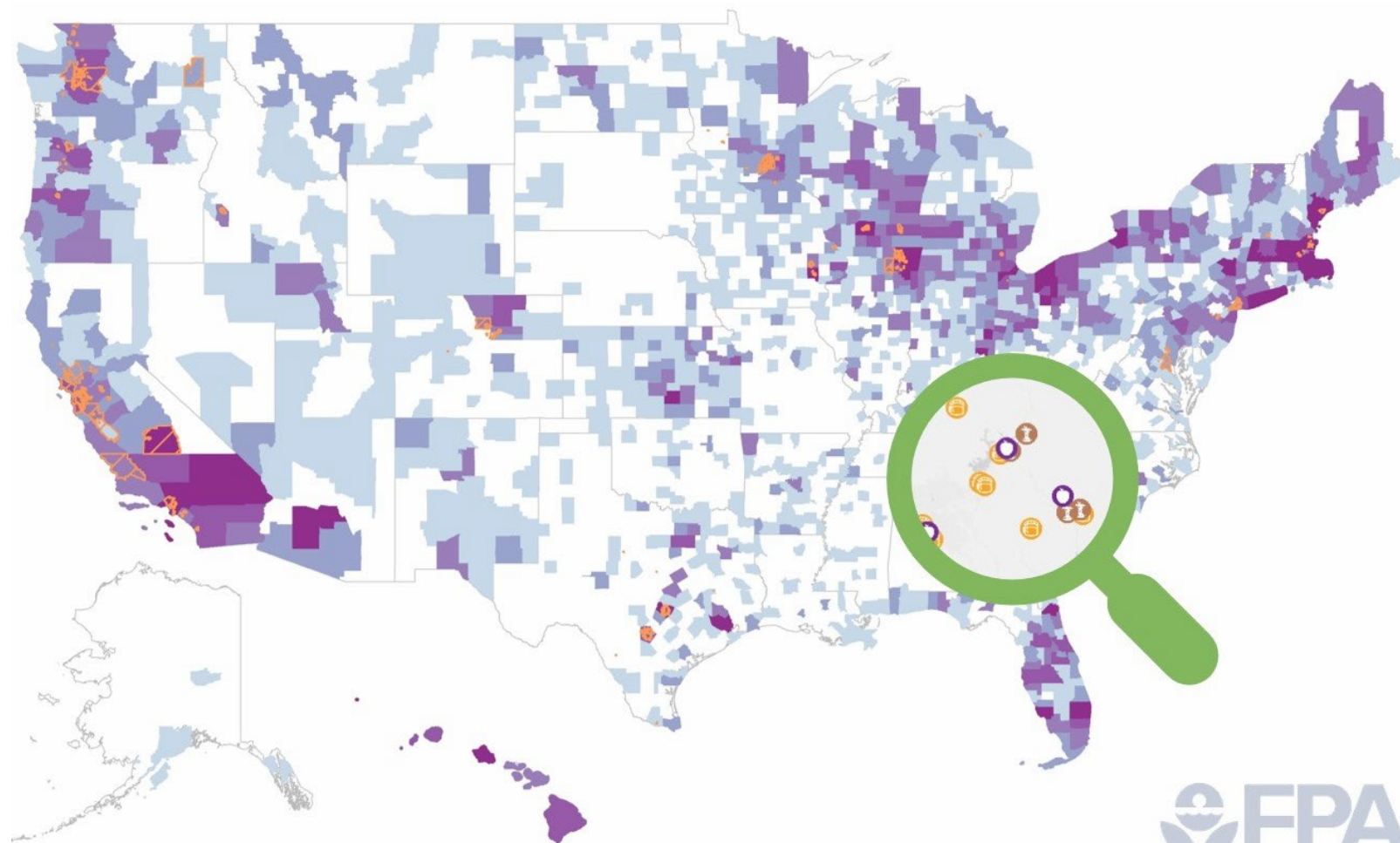


Center for Food Loss and Waste Solutions

SAVETHEFOOD.COM



Excess Food Opportunities Map

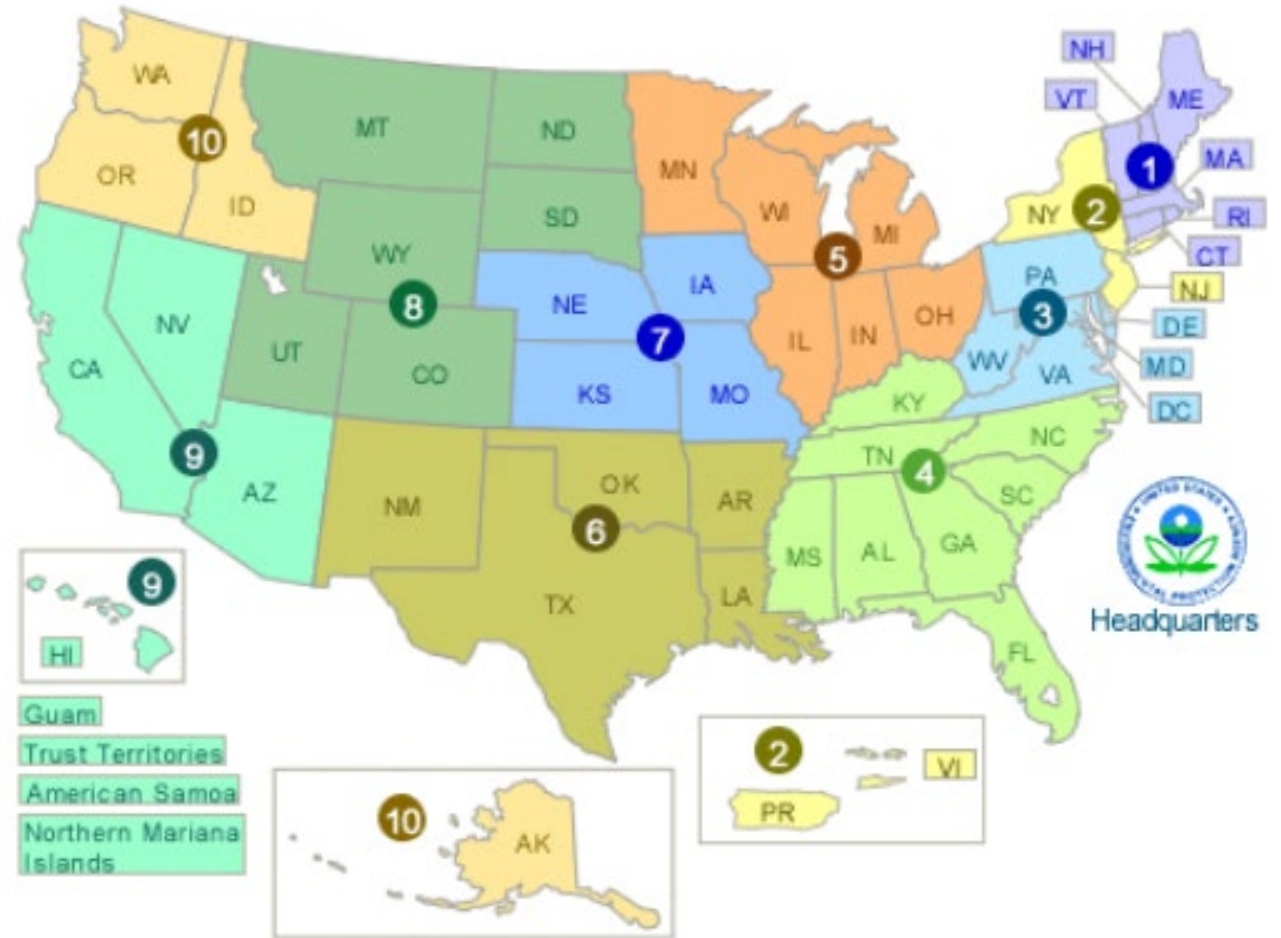


Find more than one million potential generators (sources) of excess, and more than 4,000 recipients (food banks, composters and anaerobic digesters) around the country and in your community.

www.epa.gov/foodmap



Contact Us About Sustainable Management of Food



<https://www.epa.gov/sustainable-management-food/forms/contact-us-about-sustainable-management-food>

A photograph showing four stages of a seedling's growth from left to right, set against a dark background. The seedlings are growing out of a bed of dark, fibrous mulch. The first seedling on the left is the smallest, with a single cotyledon. The second is slightly larger, with two cotyledons. The third is taller, with two cotyledons and a pair of true leaves beginning to emerge. The fourth and tallest seedling on the right has two cotyledons and a pair of well-developed true leaves. The text 'THANK YOU!' is overlaid in white, bold, sans-serif font across the middle of the image, with a thin white horizontal line underneath it.

THANK YOU!