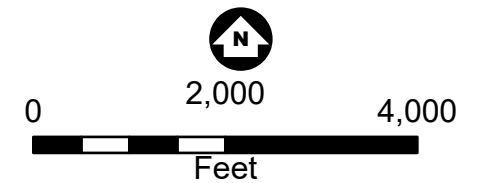


- Maintenance Location
- Line 02
- National Wetlands Inventory
 - Aquatic Bed
 - Emergent
 - Forested
 - Scrub-Shrub
 - Unconsolidated Bottom
 - Unconsolidated Shore

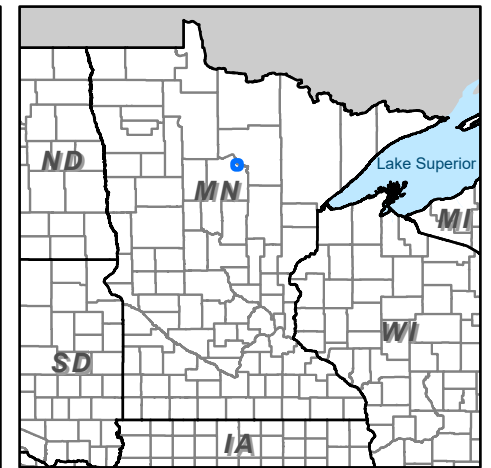
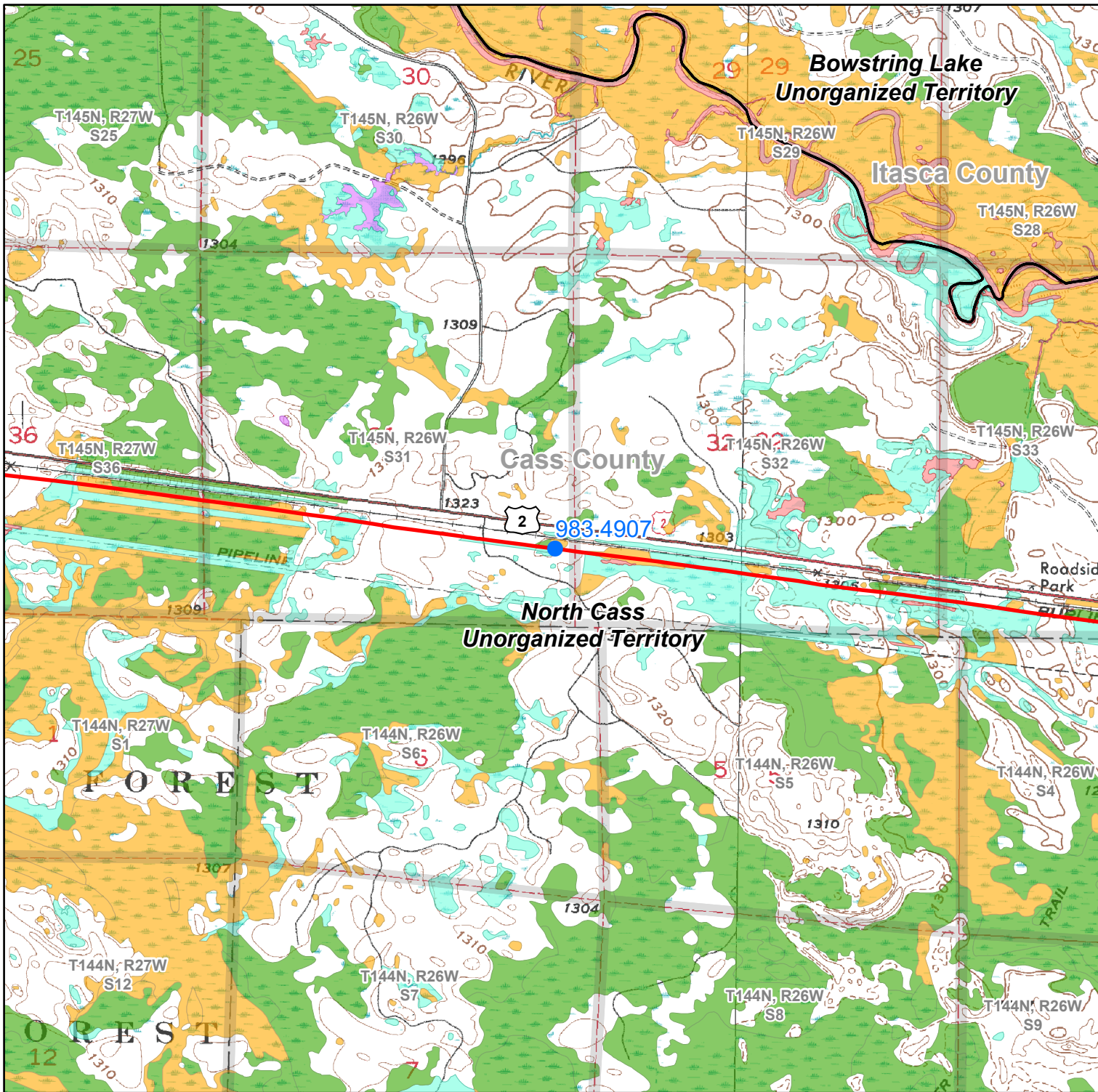


1 inch = 2,000 feet

**FIGURE 1
EXCAVATION SITE
LOCATION**

Line 2
Mileposts 961.8288 and
962.9164





- Maintenance Location
- Line 02
- National Wetlands Inventory
 - Aquatic Bed
 - Emergent
 - Forested
 - Scrub-Shrub
 - Unconsolidated Bottom
 - Unconsolidated Shore



Feet
 1 inch = 2,000 feet
FIGURE 2
EXCAVATION SITE
LOCATION
 Line 2
 Milepost 983.4907

