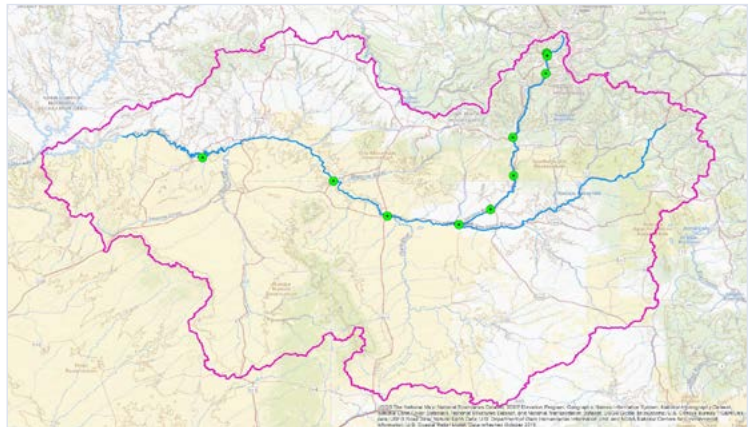


## SAN JUAN WATERSHED MONITORING PROGRAM

# Continuous Water Quality Monitoring Sondes

The United States Geological Survey (USGS) maintains 12 sondes and a larger network of streamflow gages in the watershed, from Silverton, Colorado to near Bluff, Utah. The sondes continuously monitor water quality and transmit real-time data on temperature, pH, turbidity, and specific conductance every 15 minutes.



*Locations of continuous water quality monitoring sondes in the San Juan Watershed*

### ACCESS REAL-TIME STREAMFLOW AND WATER QUALITY DATA

For historical real-time streamflow and water quality data from these sondes, go to: <https://co.water.usgs.gov/infodata/Animas/index.html>.

### SUBSCRIBE TO WATER ALERTS

To subscribe to receive an e-mail or text message at discharge, temperature, pH, specific conductance, or turbidity thresholds of your choice, go to: <http://water.usgs.gov/wateralert/>.

*Photo courtesy of USGS*



EPA 841-F-21-004  
APRIL 2021

<https://www.epa.gov/sanjuanwatershed>