

Manufacturer: Cardinal Health  
Model: Rx Barrier™ Pack  
ASTM Type: VIII E(1)

Description:

This is a semi-rigid blister non-reclosable package (Figure 1). The package consists of a paperboard blistercard enclosing a semi-rigid, foil backed blister. The package has an attached cover to permit additional instructions (see arrow Figure 2). The molded clear semi-rigid plastic film blister cavities protrude through holes in the front of the card and are protected by a PVC cover (Figure 3). The back of the card has perforations through which products are dispensed (see black arrow on left side of Figure 4).



Figure 1



Figure 2



Figure 3

The package is opened by pushing the tablet through the back of the card. The card is turned over and the now exposed tablet is removed from the blister cavity (see blue arrow on the right side of Figure 4).

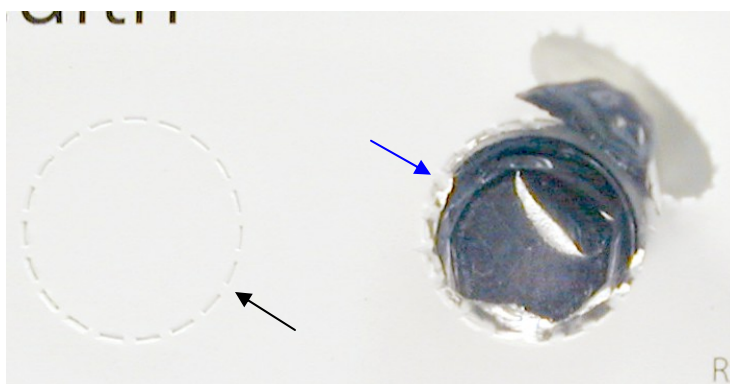


Figure 4

Instructions:

The instructions on the front of the card (card with blisters in Figure 3) are below:

Push tablet through and remove from back.